

Rozsáhlá sbírka šachových problémů (mnohotažek)

Strmilovská zastavení bohyně Caissy

15. díl

diagramy 2801-3000

Příjemný soupeř

Volný trh – bojiště krvavé
zde soucit marně bys hledal.
Pro peníz kdo by Ti z kupčičků
pořádně přes držku nedal.

Jak smečka vlčí se vrhá vždy
na ze stáda nejslabší kus
Trhovci zkušeně vyhlíží
kdo koupí ten jejich humus

Netřeba k tomu být profesor
by se ti rozbřesklo v lebce
že děti ošidíš nejsnáze
tam se zisk vytváří lehce.

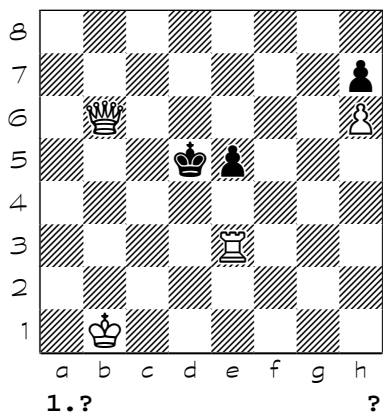
I rodiče pro své zázraky
nakoupí kdejaký aušus
když kupčičk má pajšl z PVC
naseká chechtáků trambus

Mirek Dušín

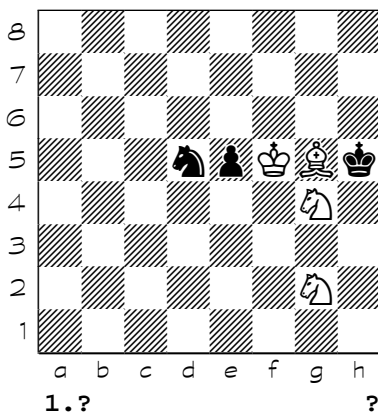
<http://www.strmilov.cz/>

Chess diagrams

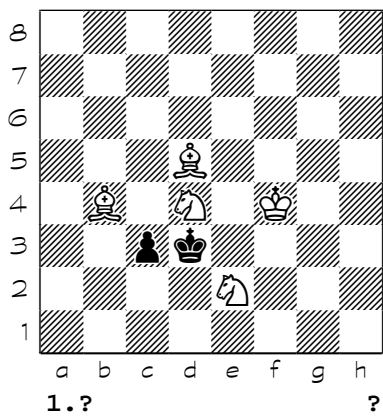
2801



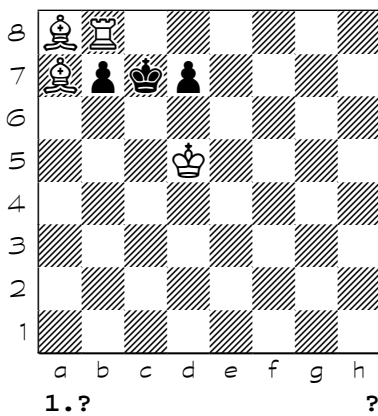
2802



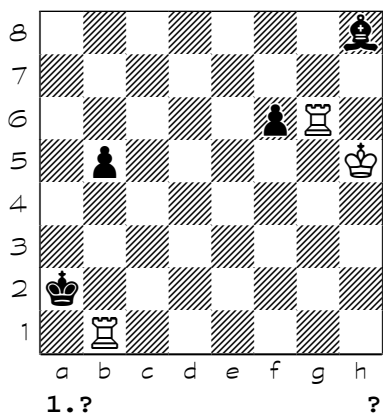
2803



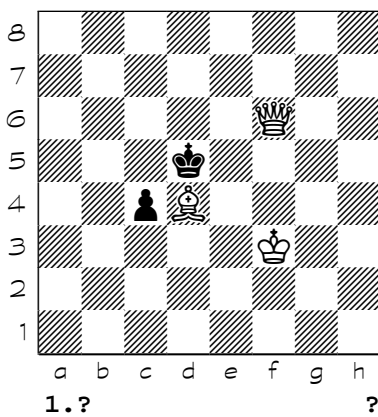
2804



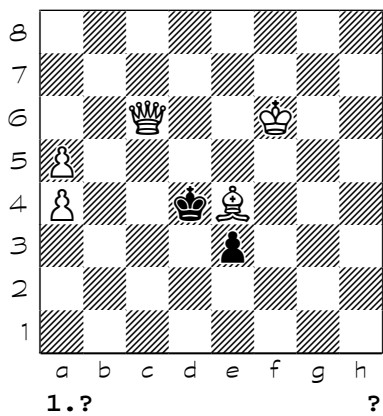
2805



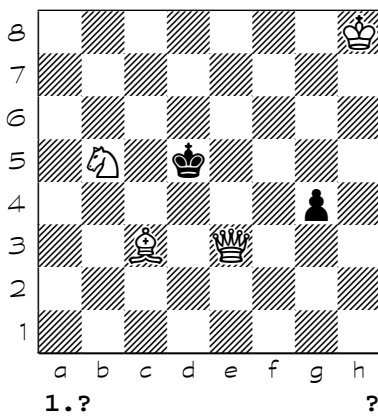
2806



2807

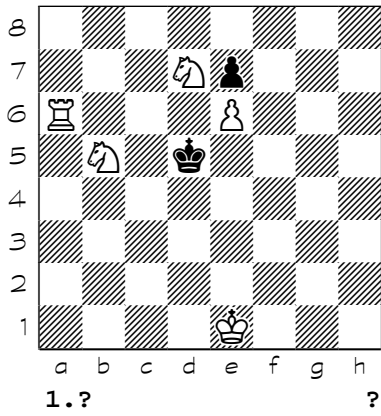


2808

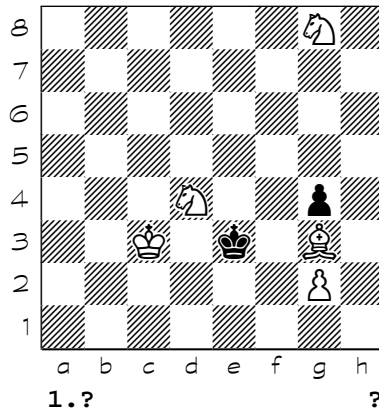


Chess diagrams

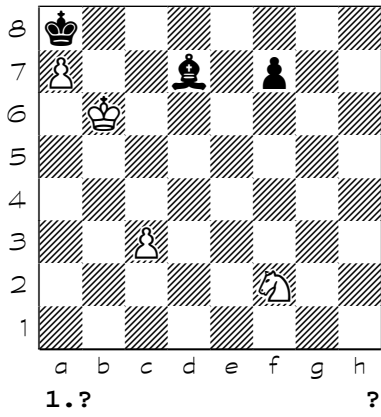
2809



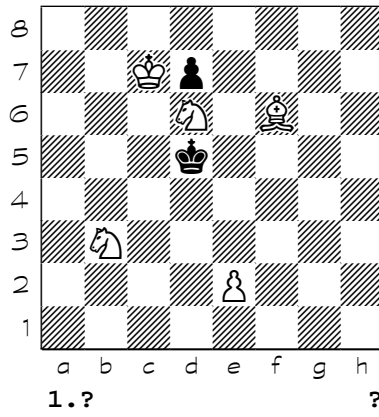
2810



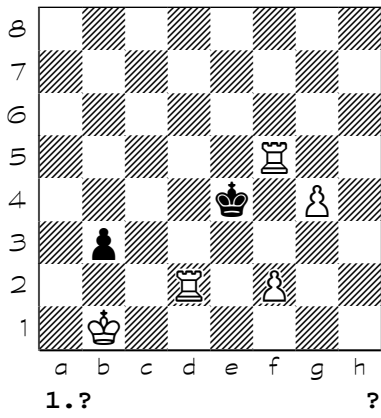
2811



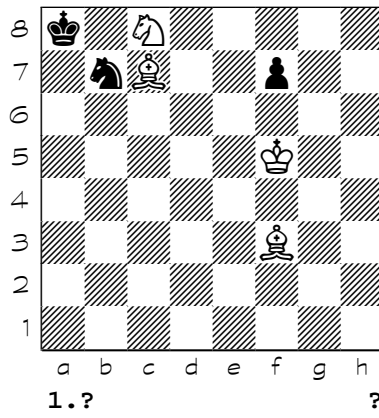
2812



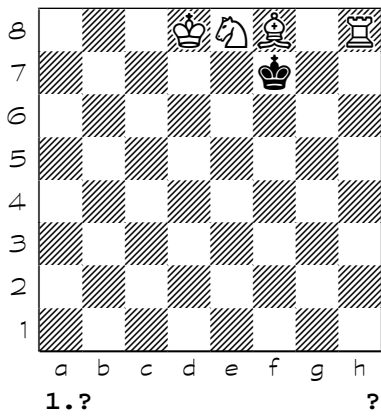
2813



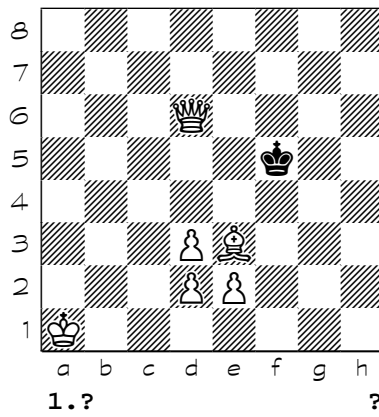
2814



2815

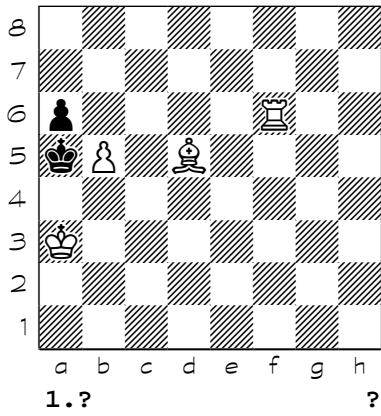


2816

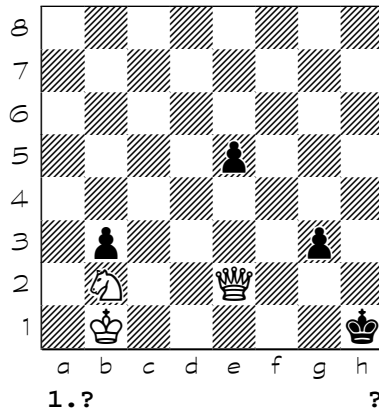


Chess diagrams

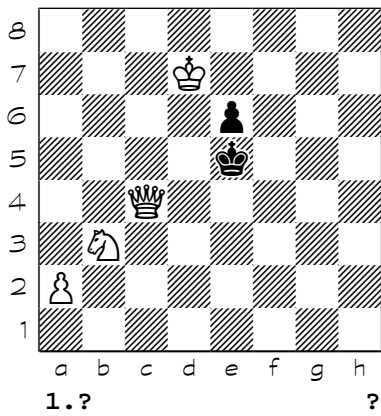
2817



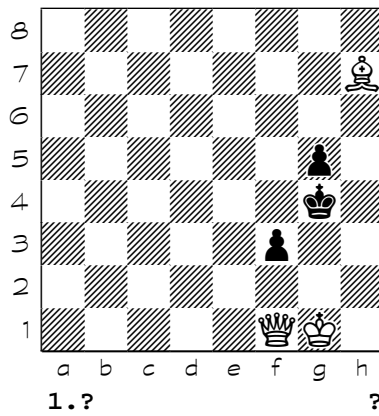
2818



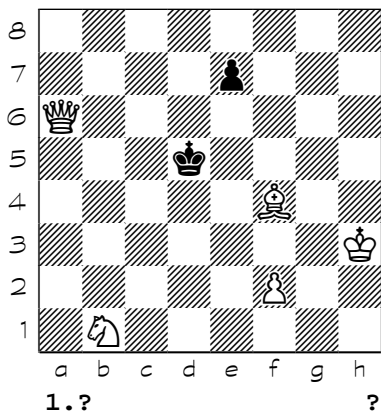
2819



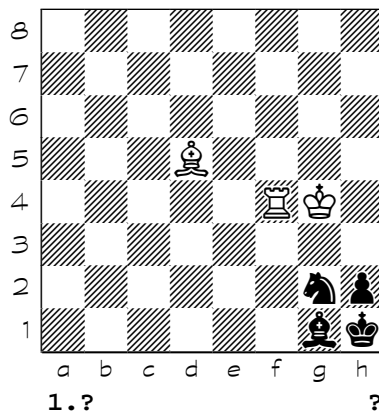
2820



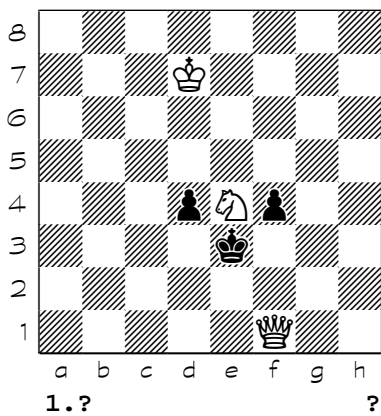
2821



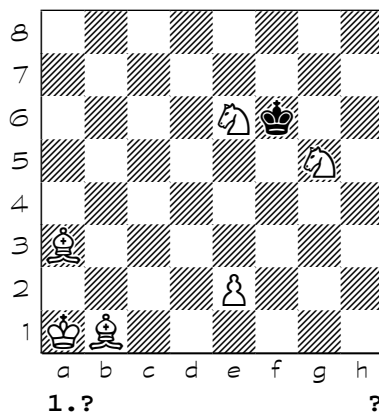
2822



2823

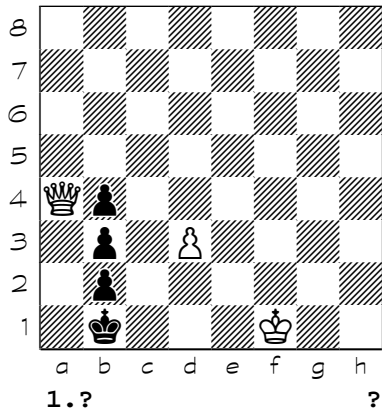


2824

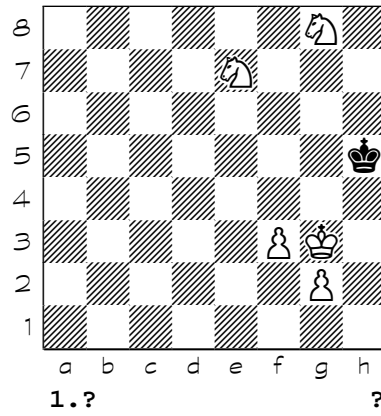


Chess diagrams

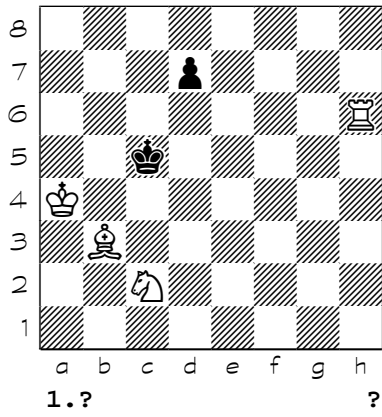
2825



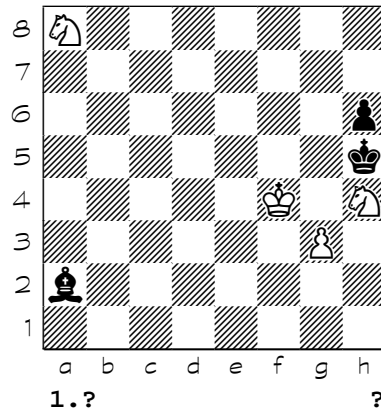
2826



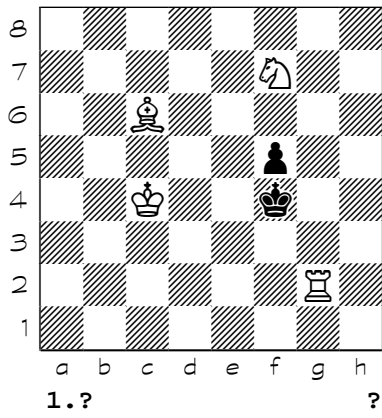
2827



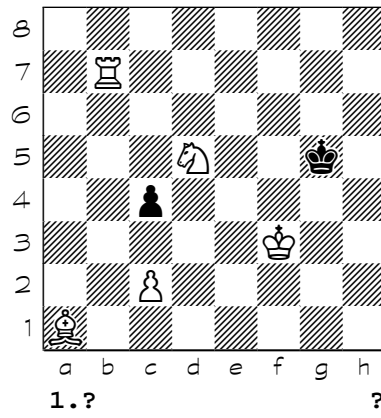
2828



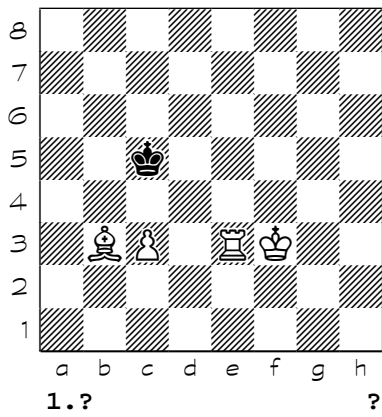
2829



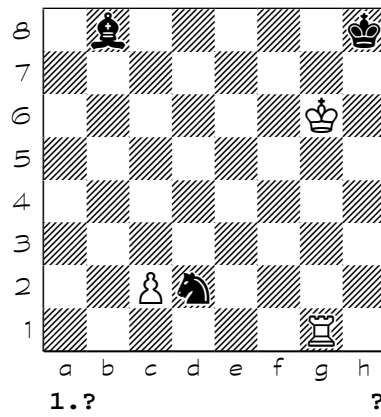
2830



2831

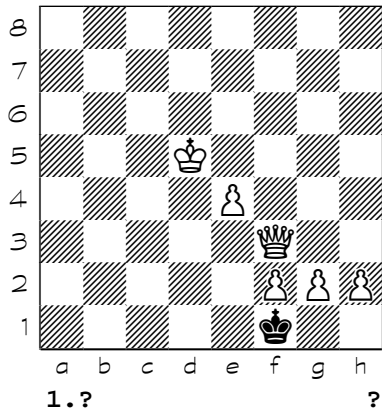


2832

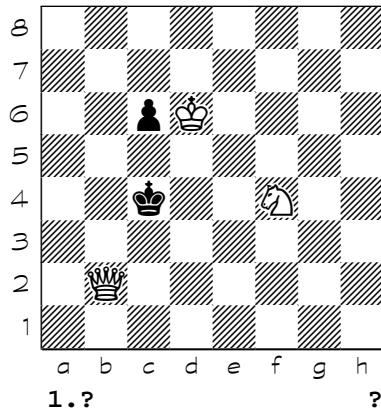


Chess diagrams

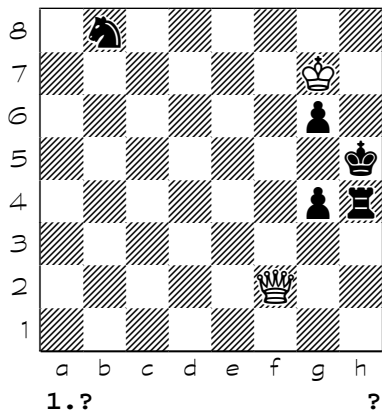
2833



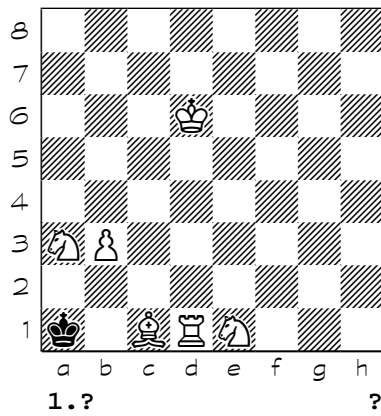
2834



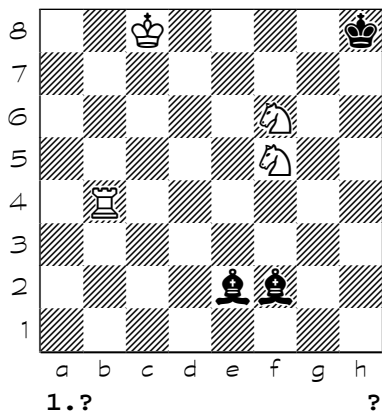
2835



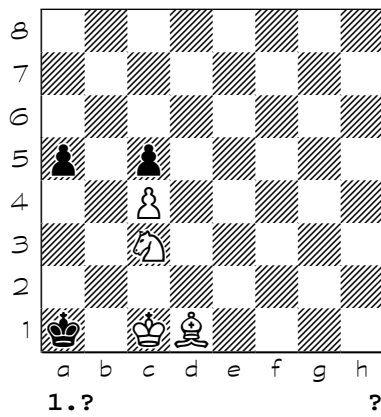
2836



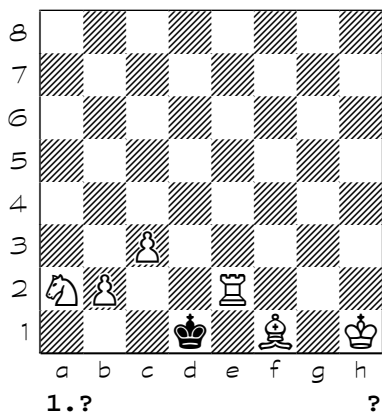
2837



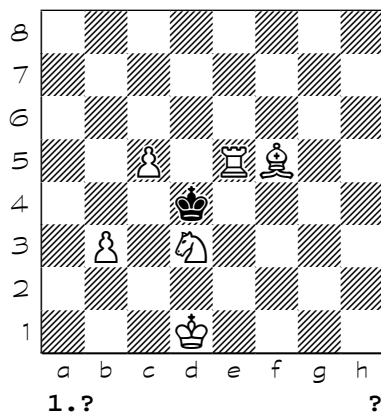
2838



2839

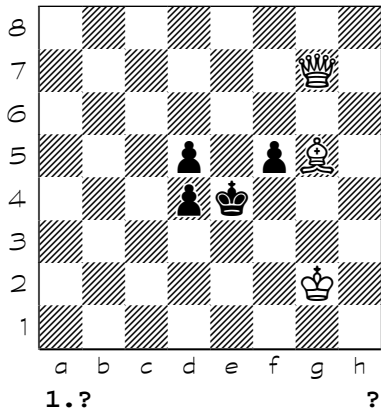


2840

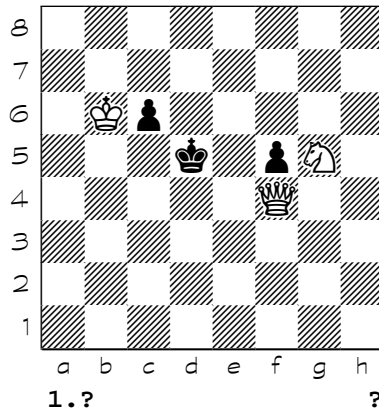


Chess diagrams

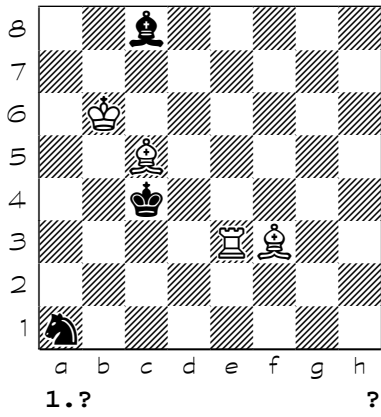
2841



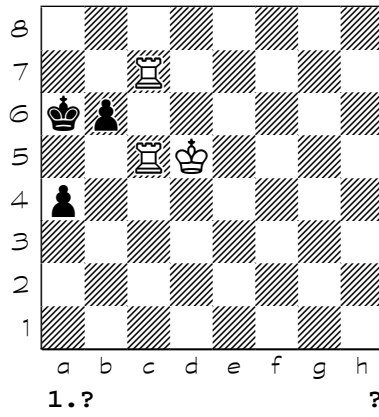
2842



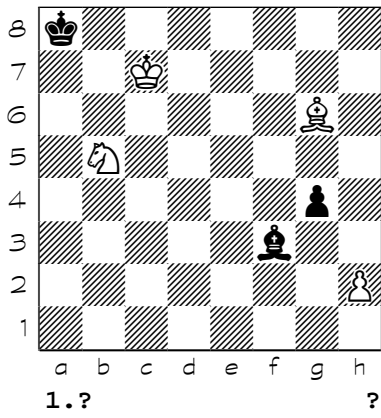
2843



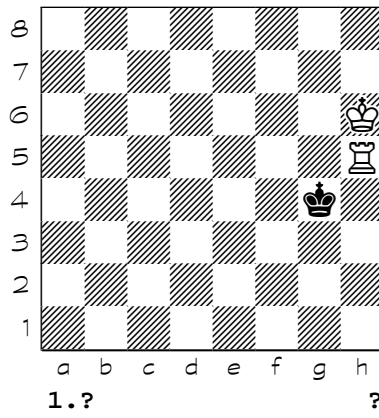
2844



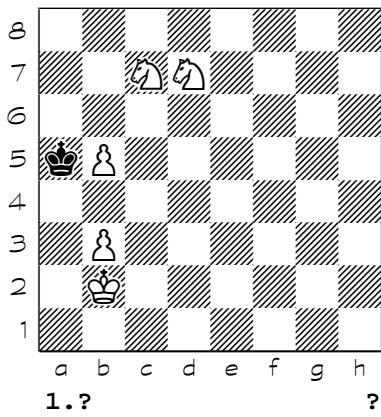
2845



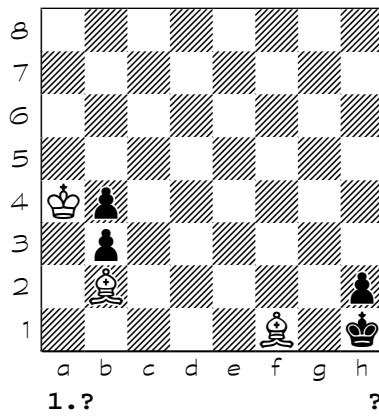
2846



2847

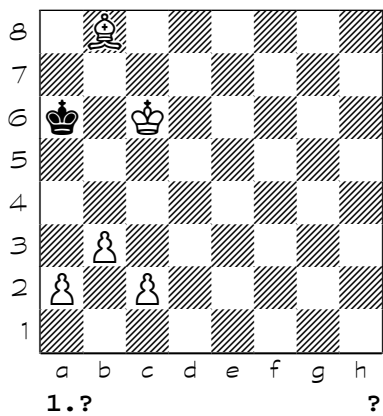


2848

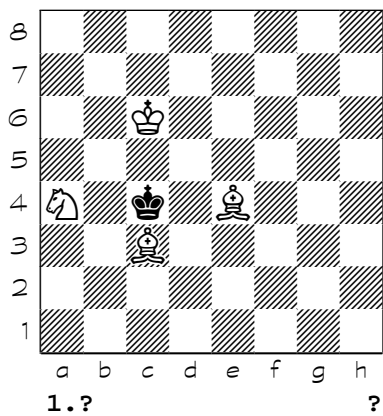


Chess diagrams

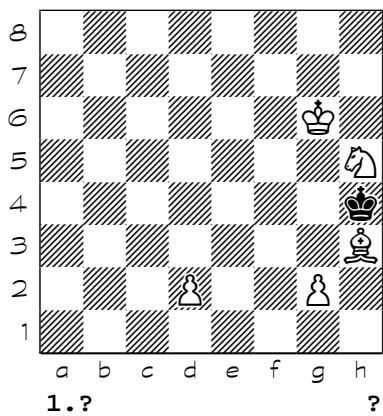
2849



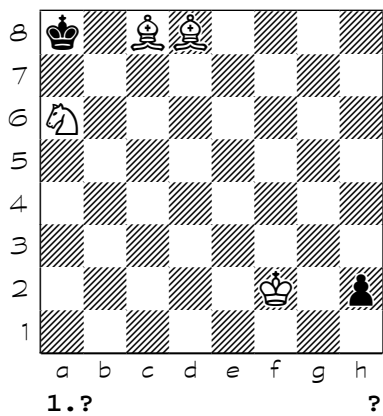
2850



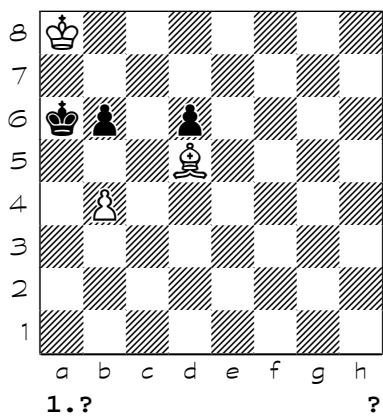
2851



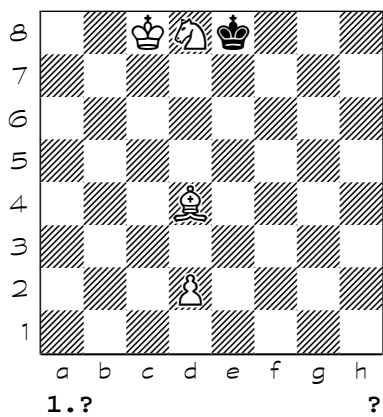
2852



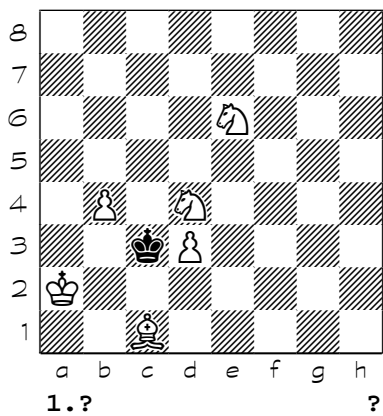
2853



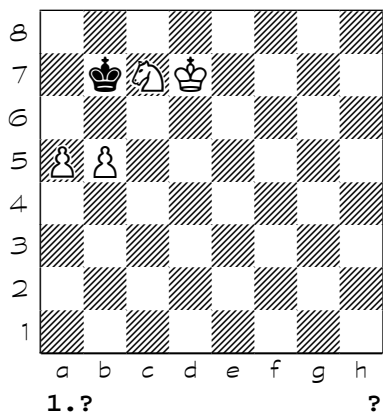
2854



2855

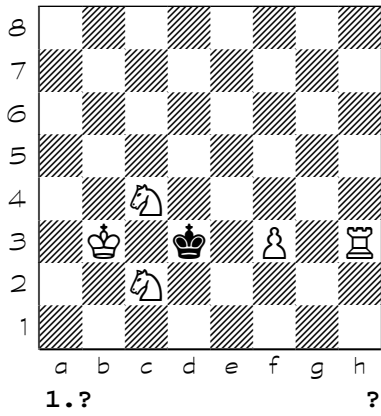


2856

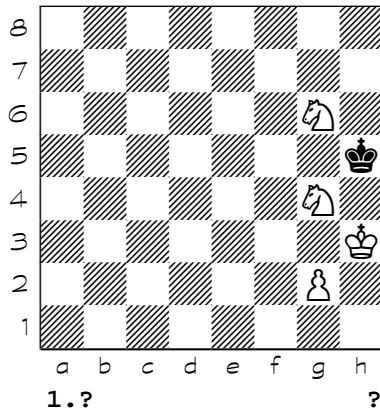


Chess diagrams

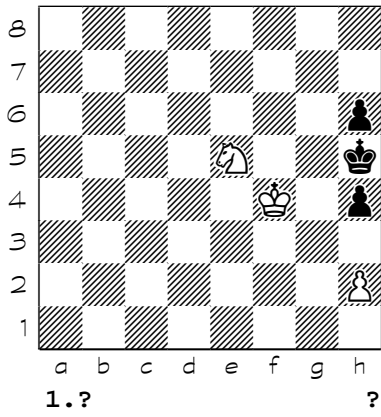
2857



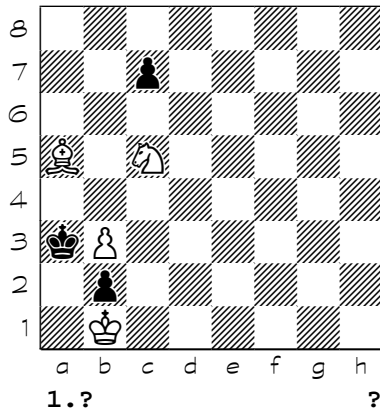
2858



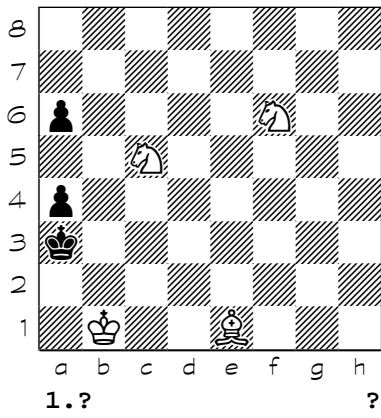
2859



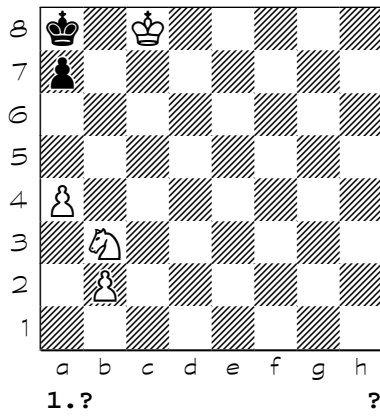
2860



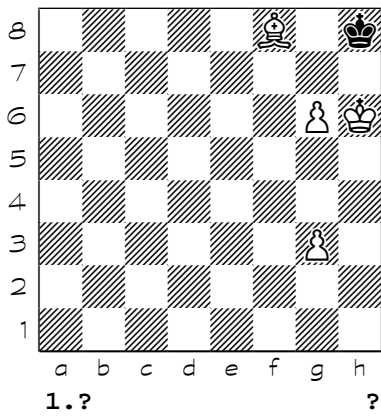
2861



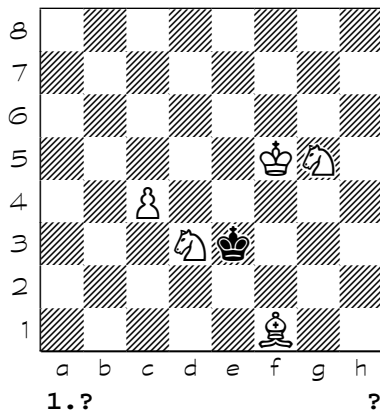
2862



2863

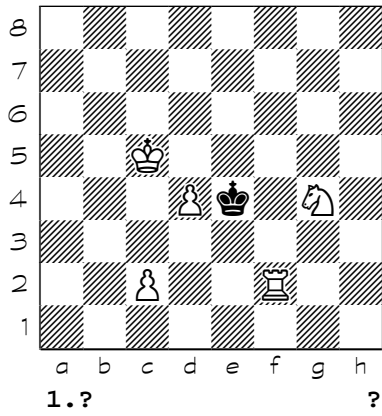


2864

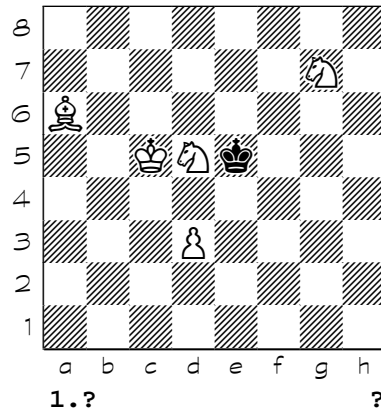


Chess diagrams

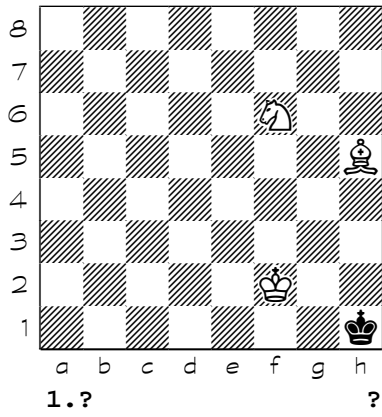
2865



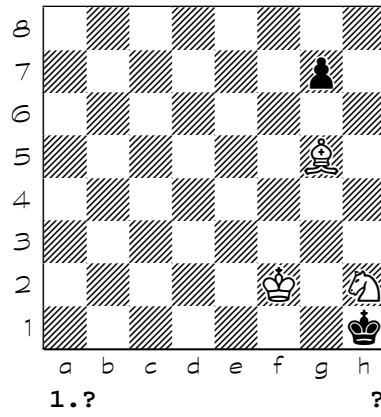
2866



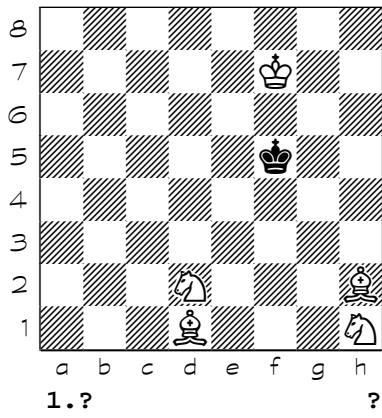
2867



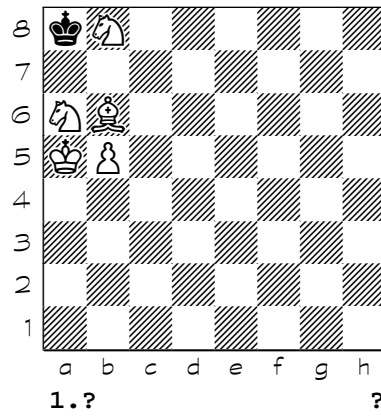
2868



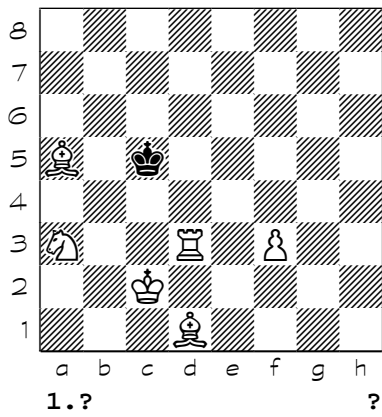
2869



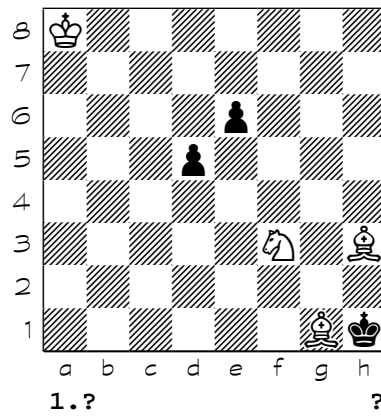
2870



2871

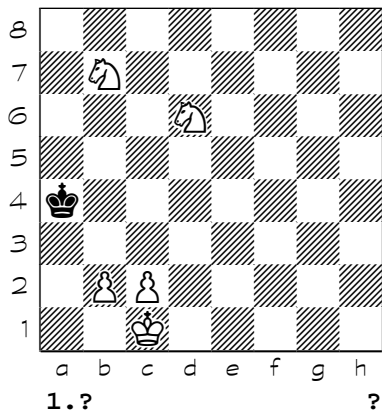


2872

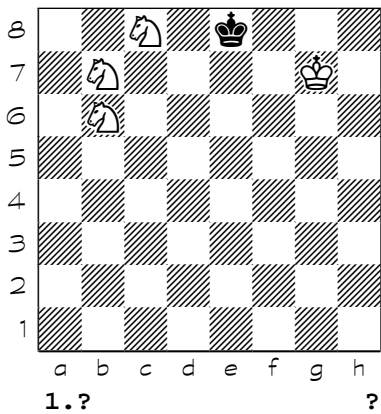


Chess diagrams

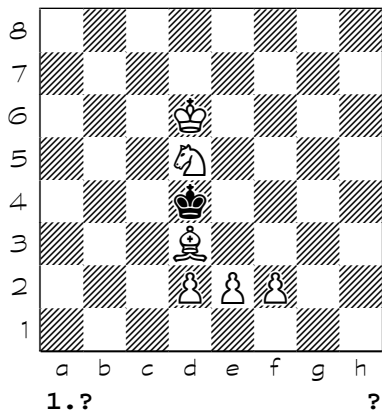
2881



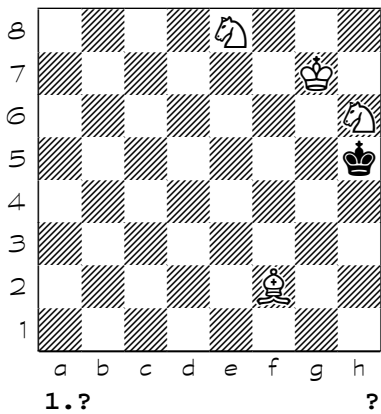
2882



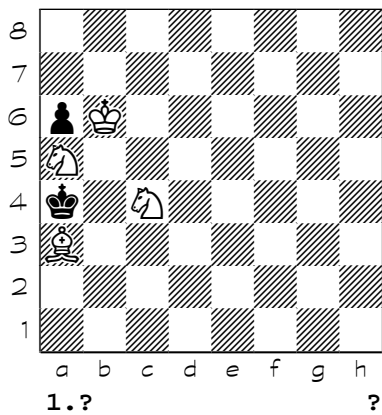
2883



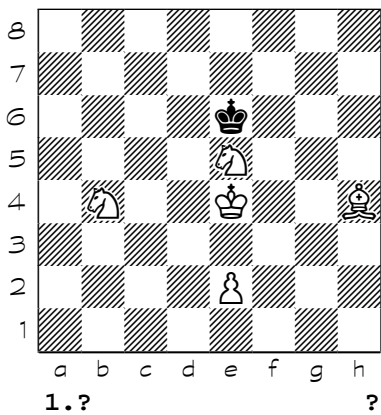
2884



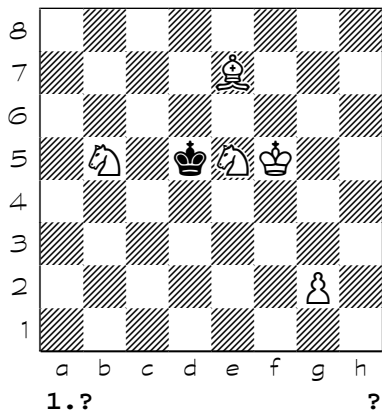
2885



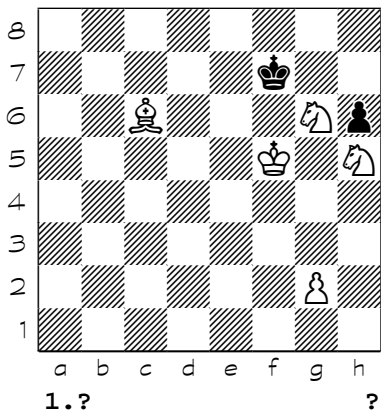
2886



2887

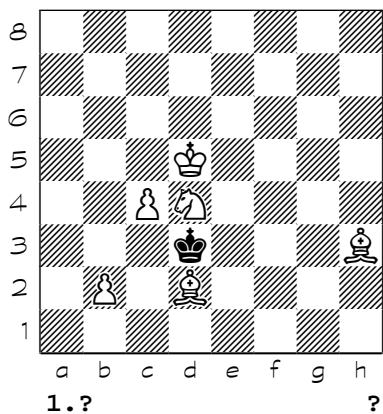


2888

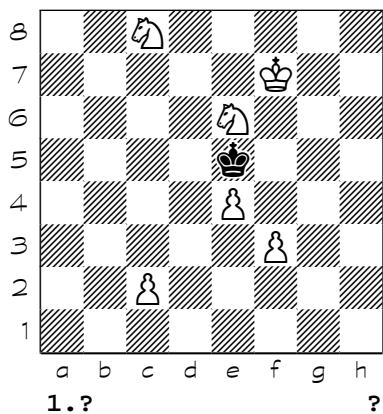


Chess diagrams

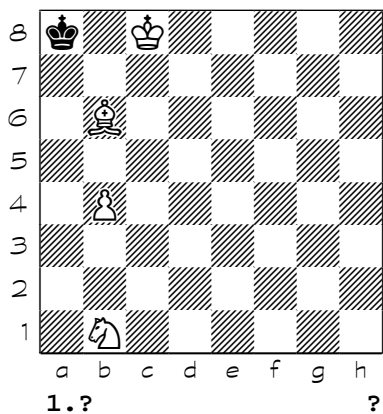
2889



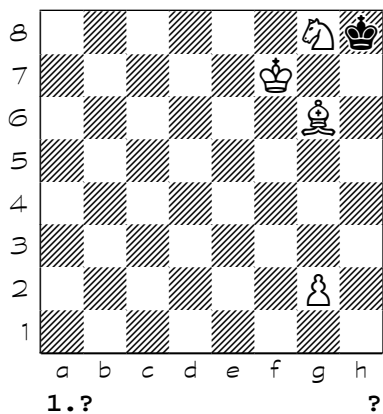
2890



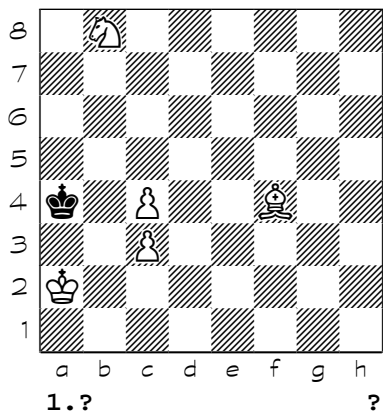
2891



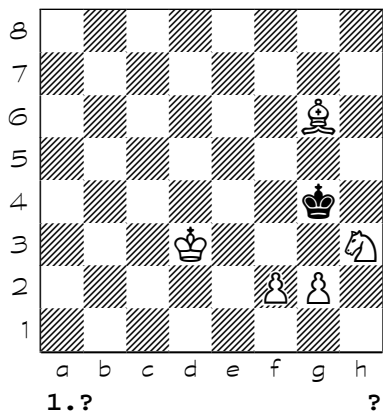
2892



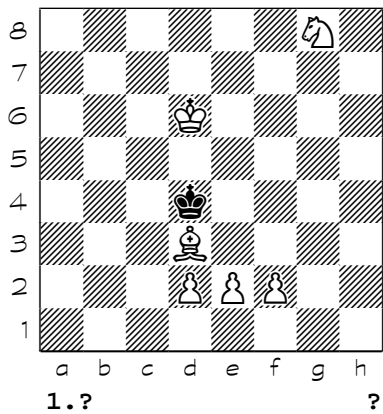
2893



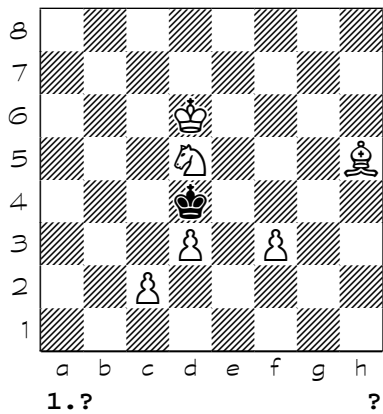
2894



2895

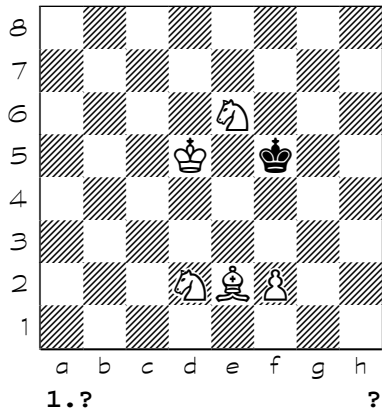


2896

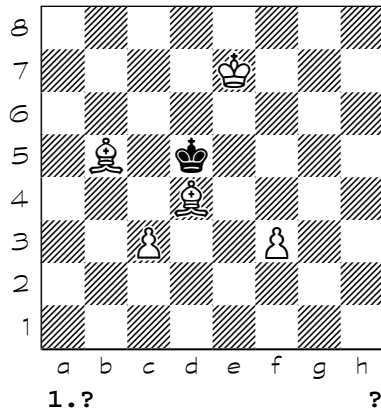


Chess diagrams

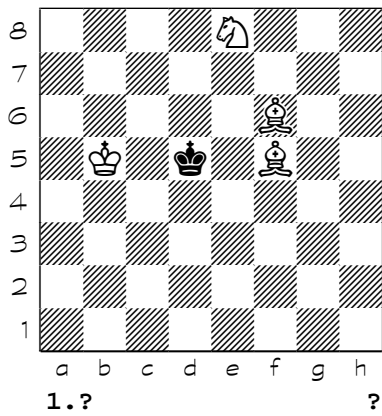
2897



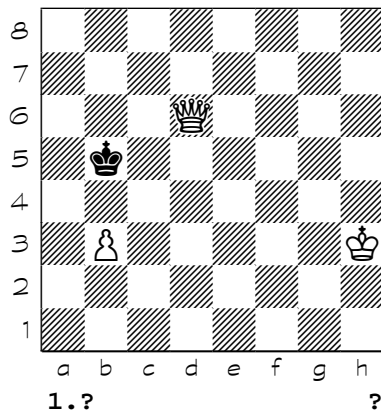
2898



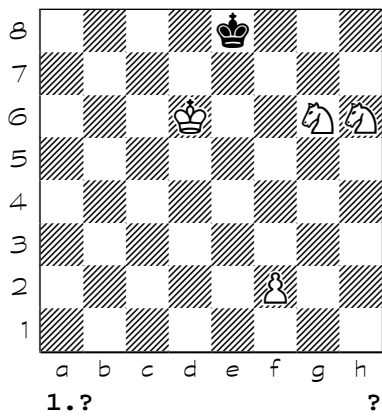
2899



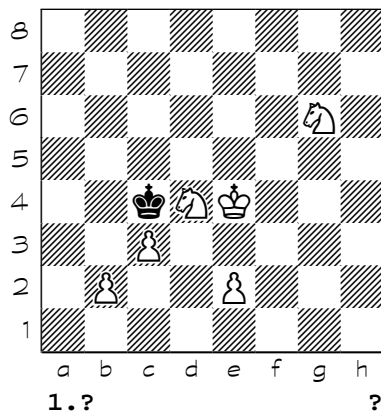
2900



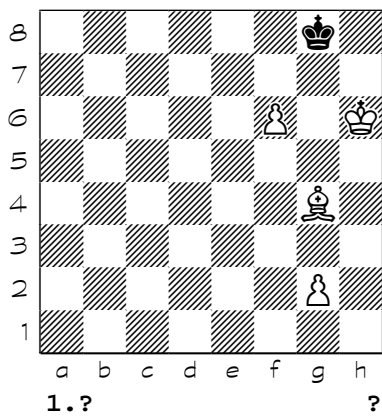
2901



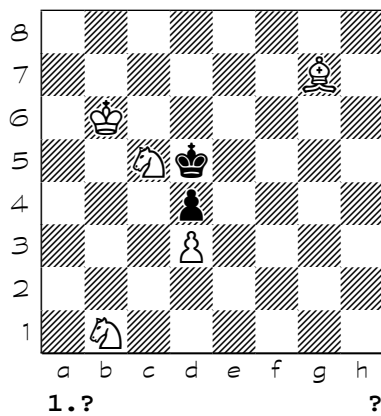
2902



2903

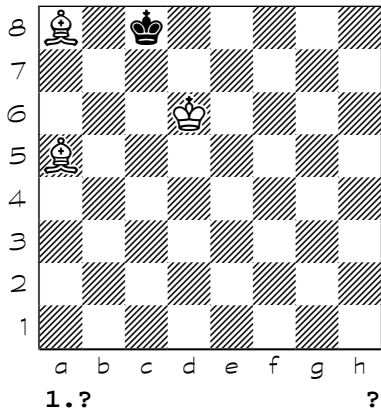


2904

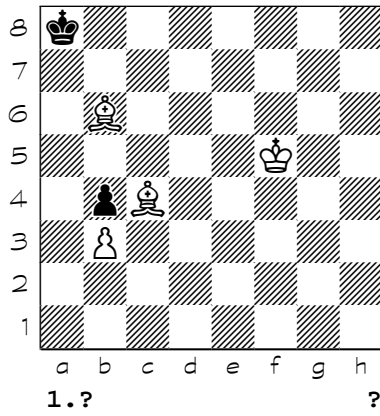


Chess diagrams

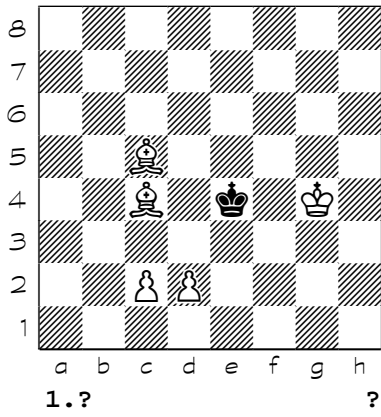
2905



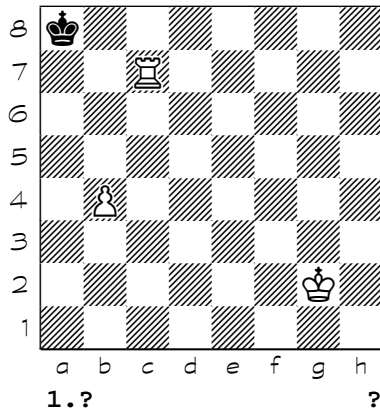
2906



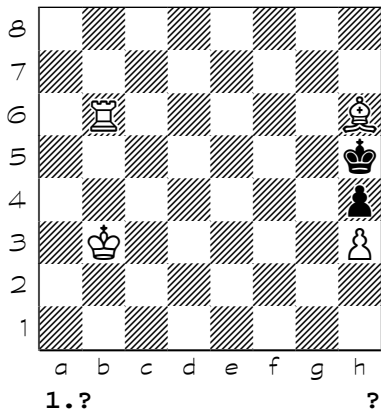
2907



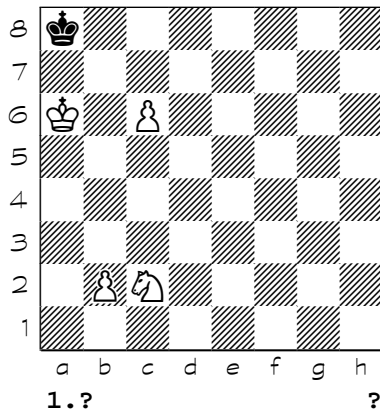
2908



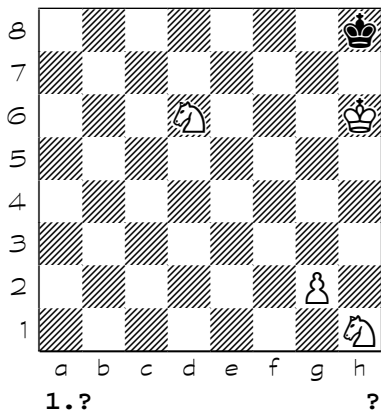
2909



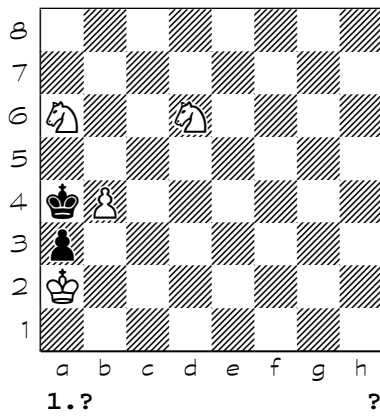
2910



2911

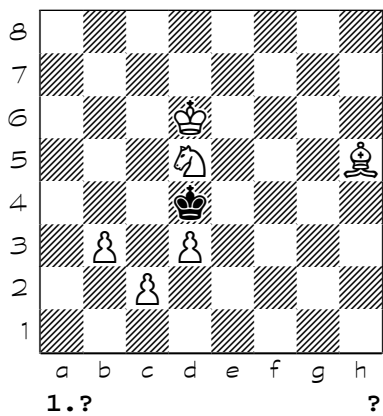


2912

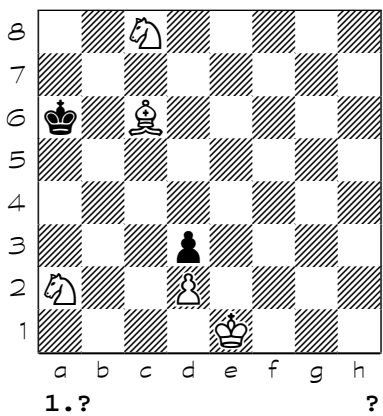


Chess diagrams

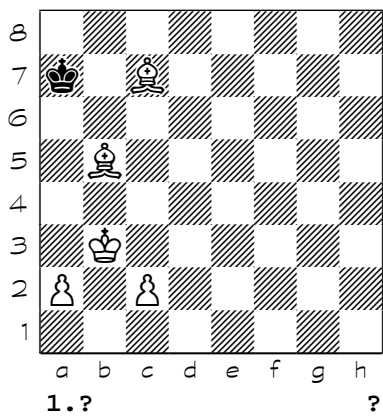
2913



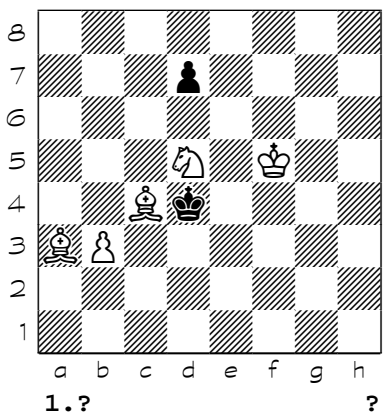
2914



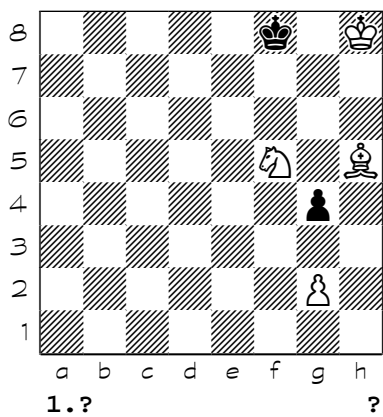
2915



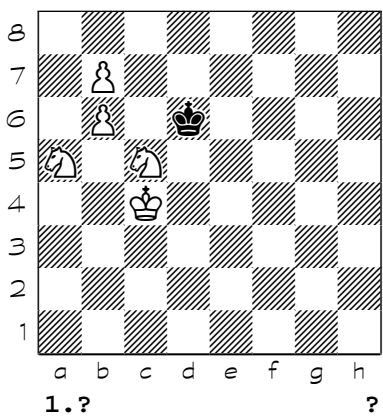
2916



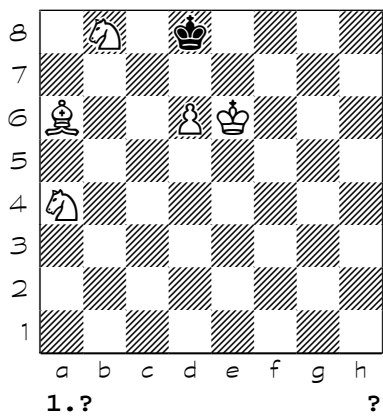
2917



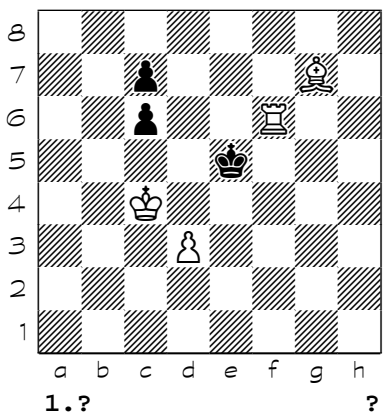
2918



2919

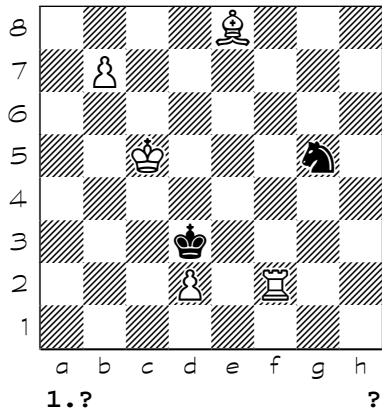


2920

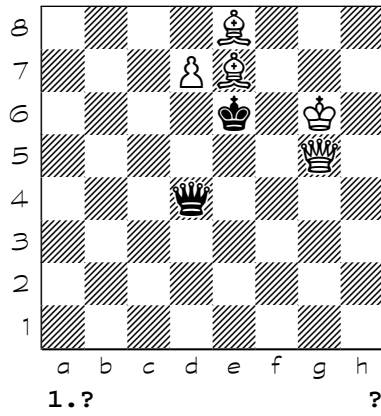


Chess diagrams

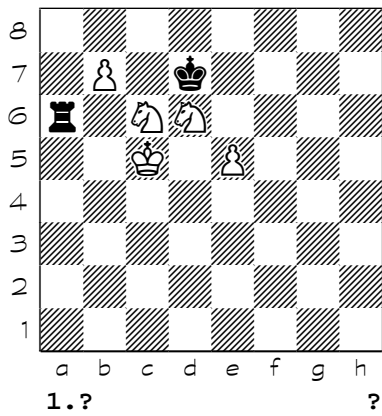
2921



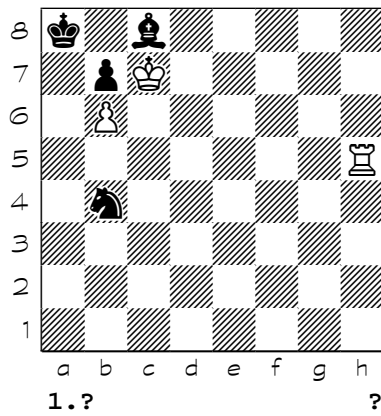
2922



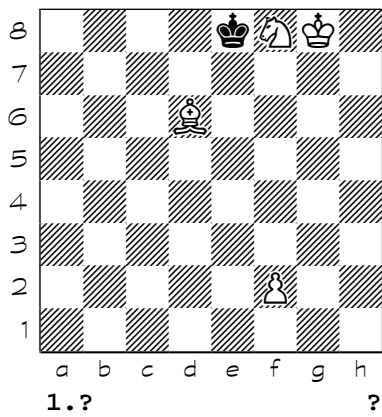
2923



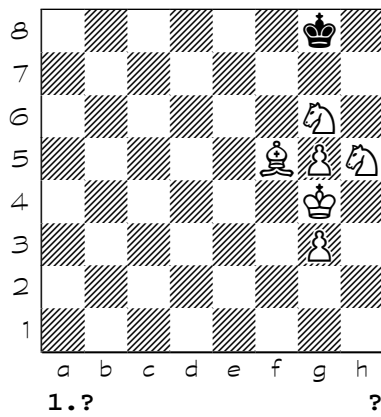
2924



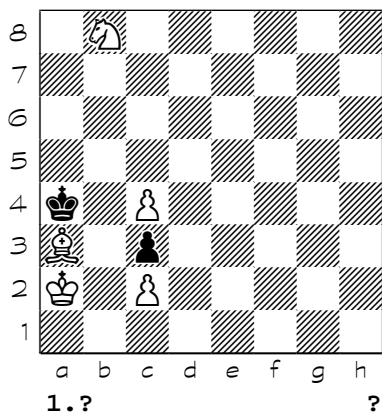
2925



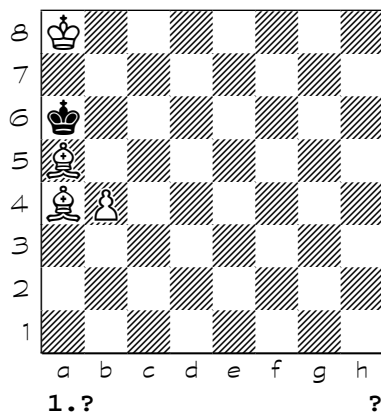
2926



2927

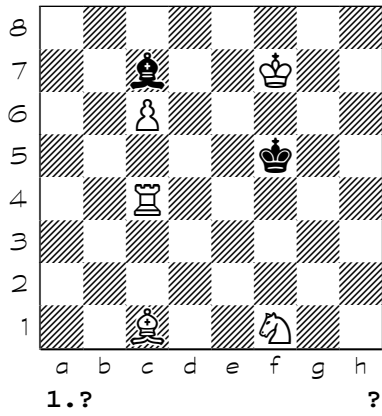


2928

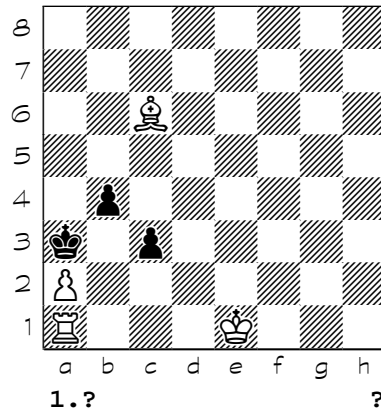


Chess diagrams

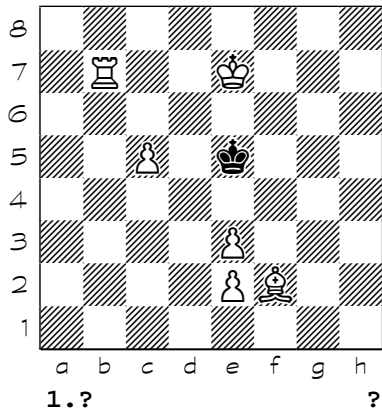
2929



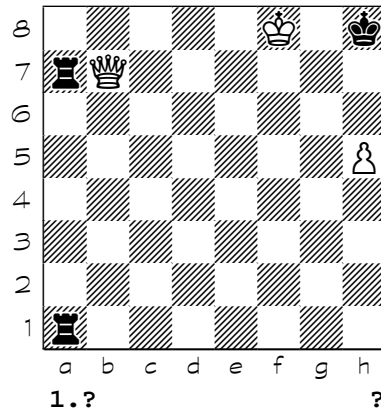
2930



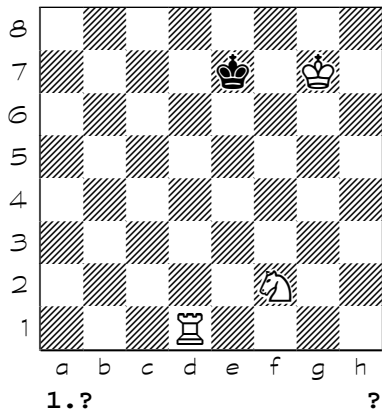
2931



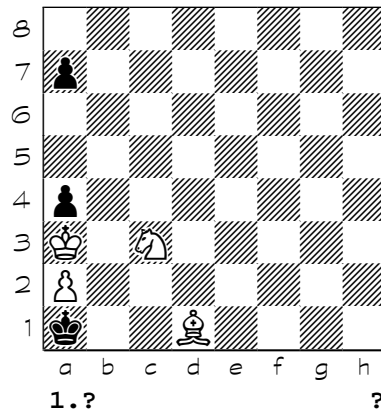
2932



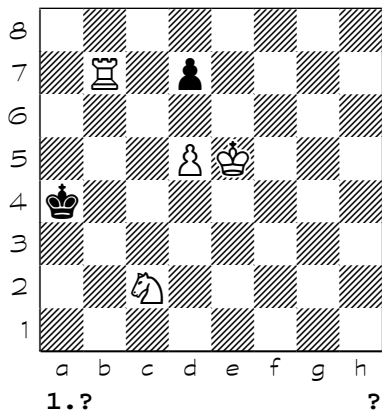
2933



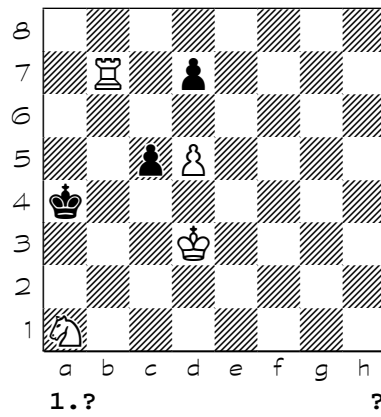
2934



2935

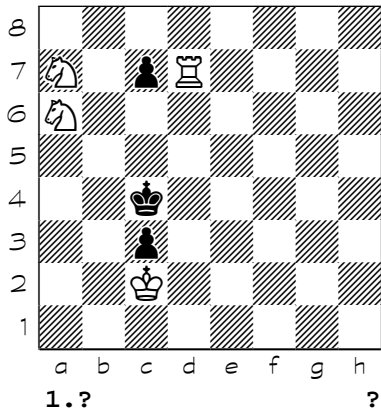


2936

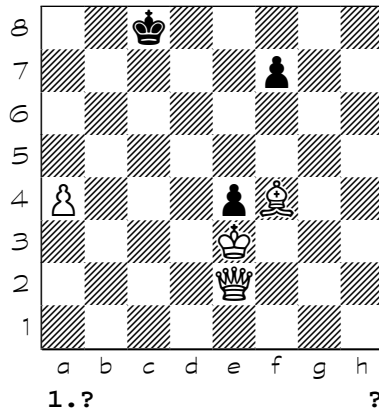


Chess diagrams

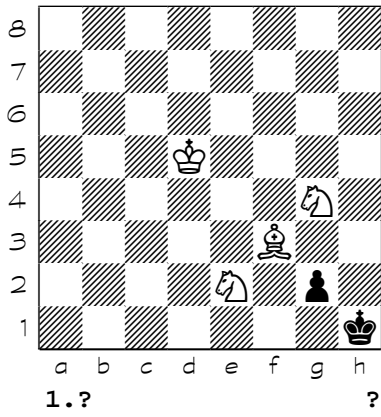
2937



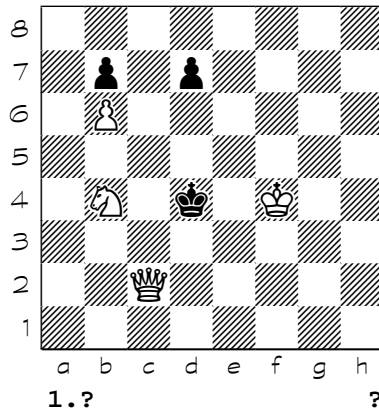
2938



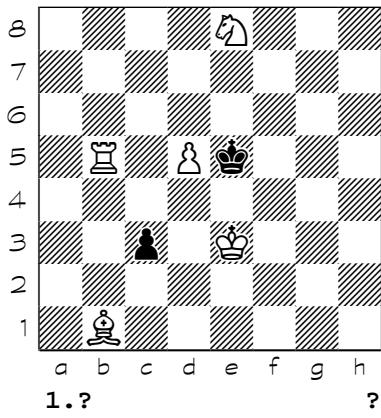
2939



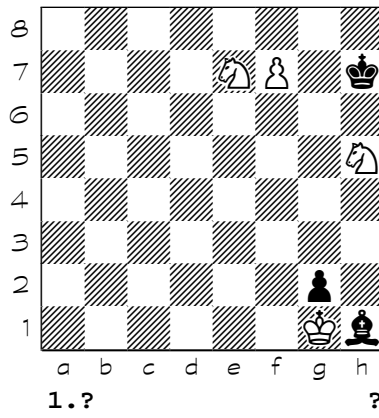
2940



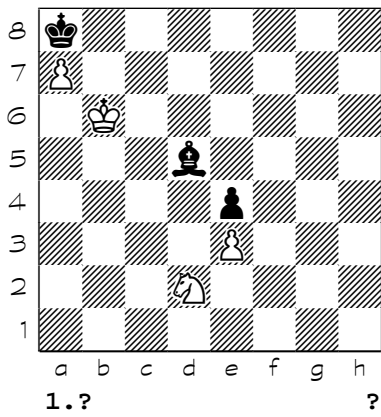
2941



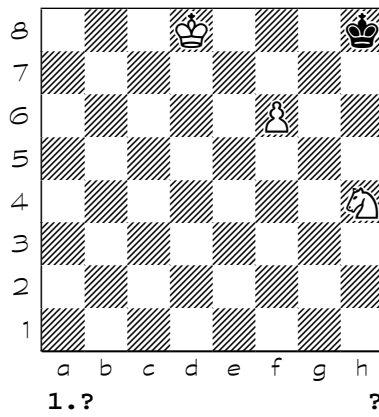
2942



2943

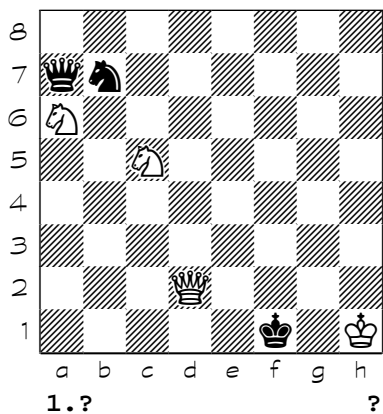


2944

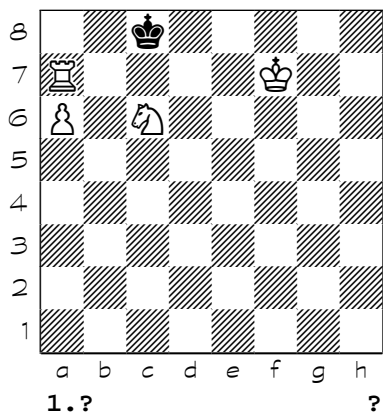


Chess diagrams

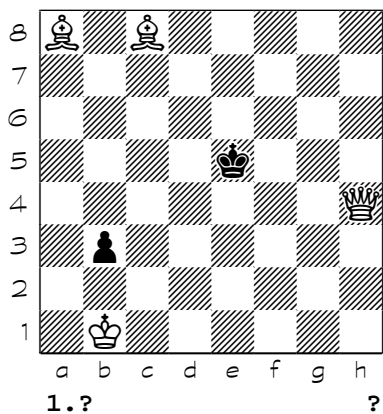
2945



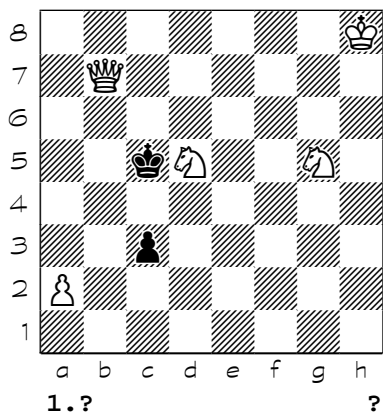
2946



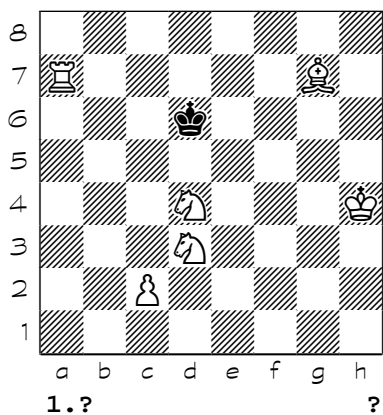
2947



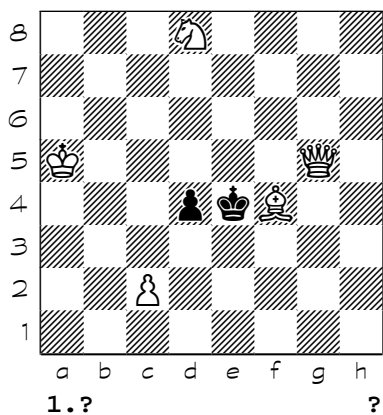
2948



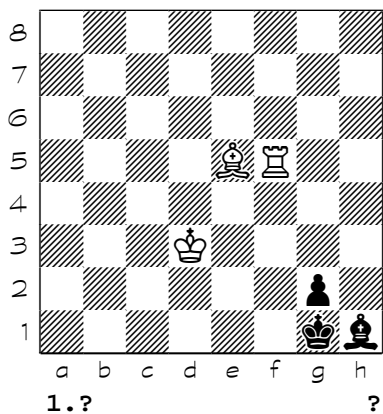
2949



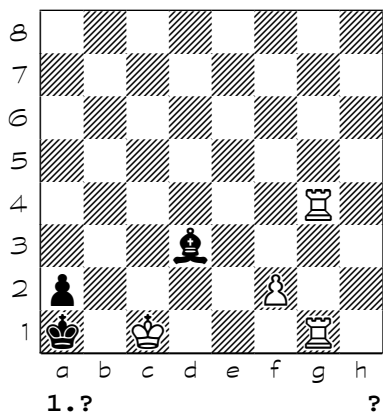
2950



2951

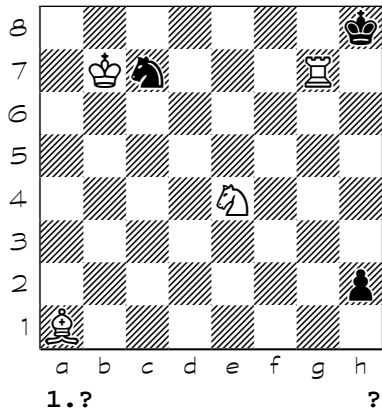


2952

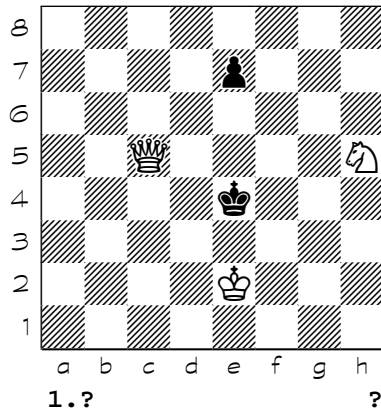


Chess diagrams

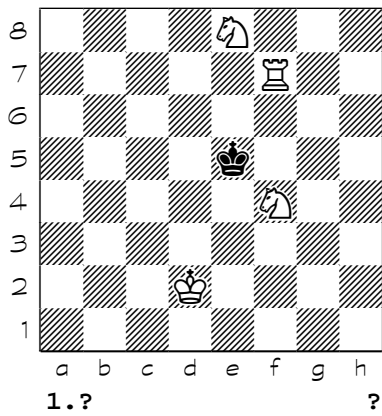
2961



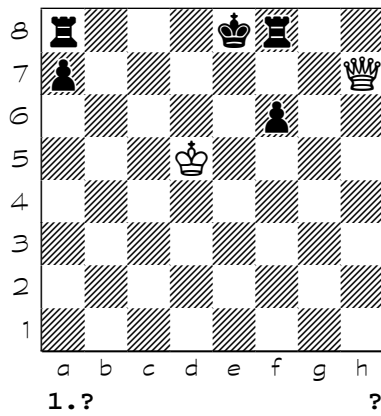
2962



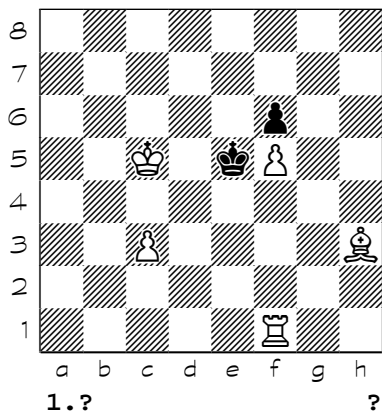
2963



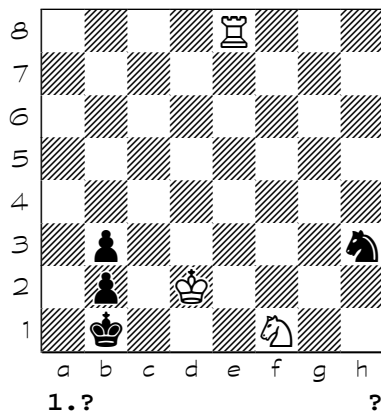
2964



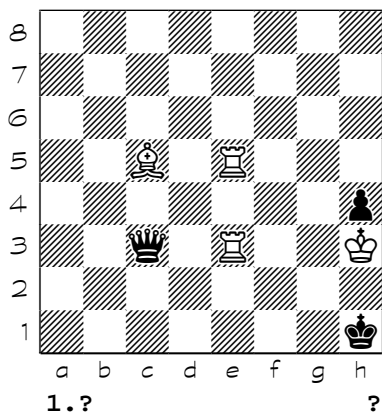
2965



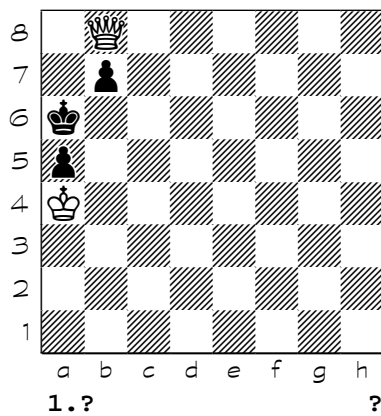
2966



2967

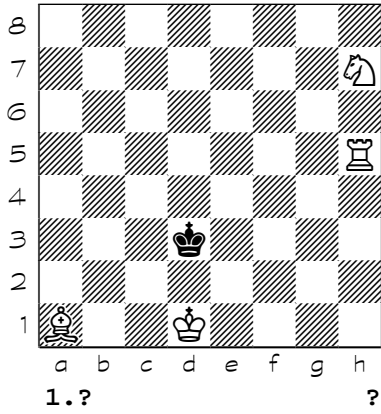


2968

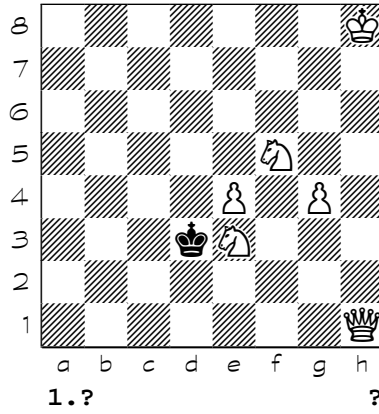


Chess diagrams

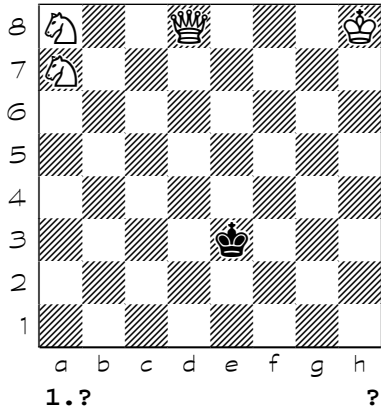
2969



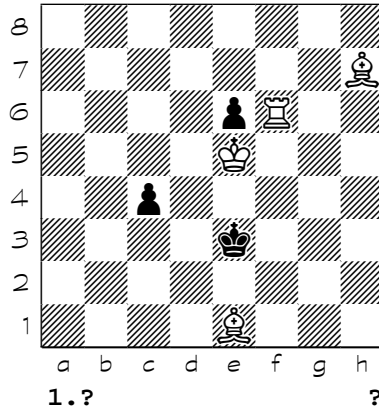
2970



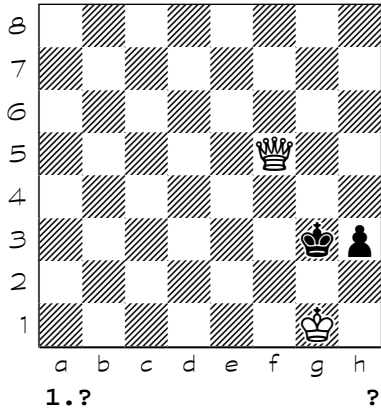
2971



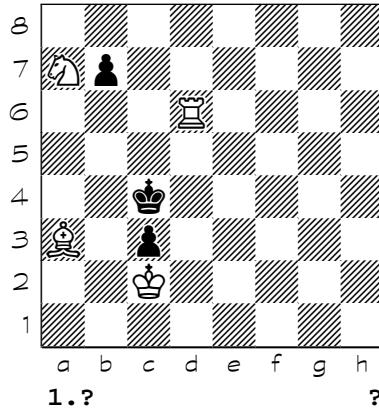
2972



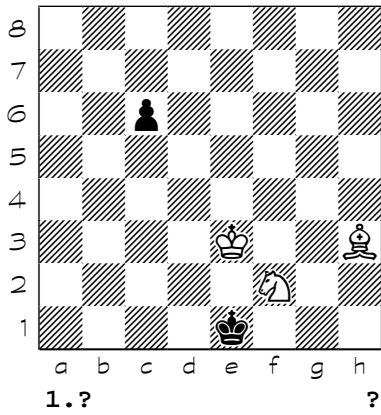
2973



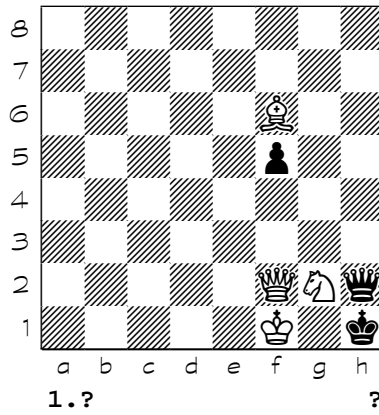
2974



2975

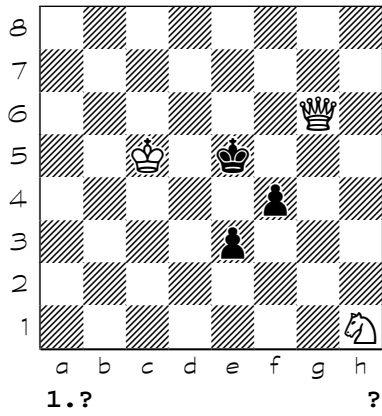


2976

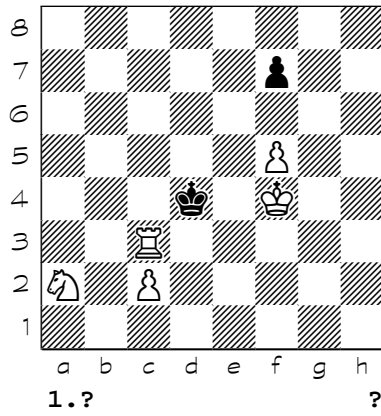


Chess diagrams

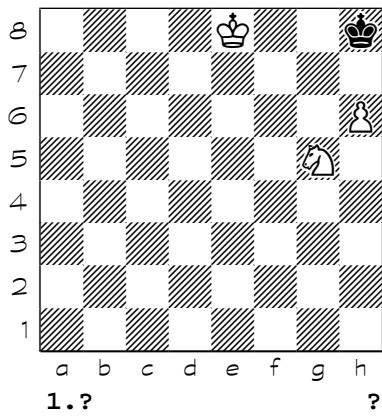
2977



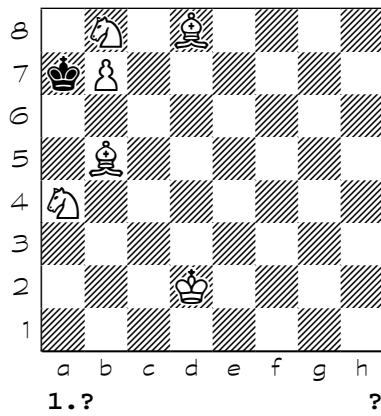
2978



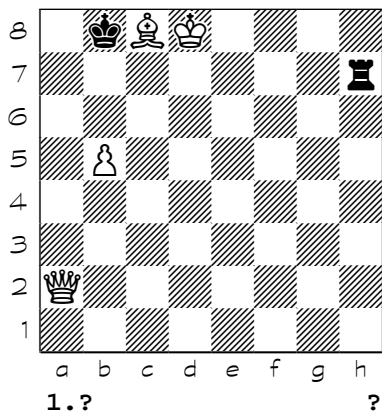
2979



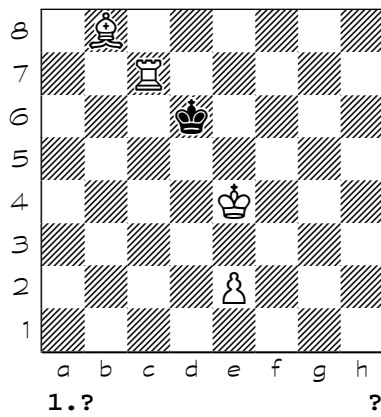
2980



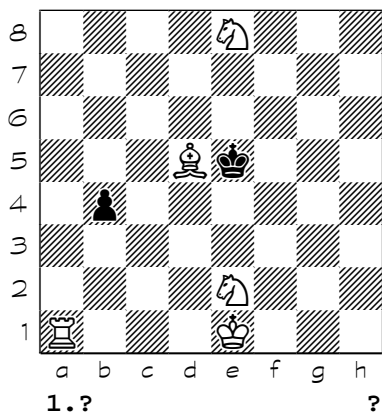
2981



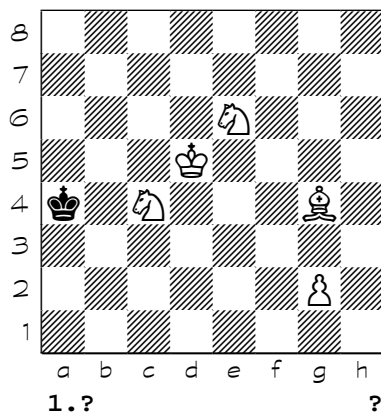
2982



2983

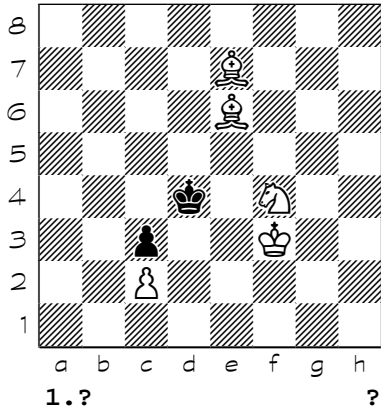


2984

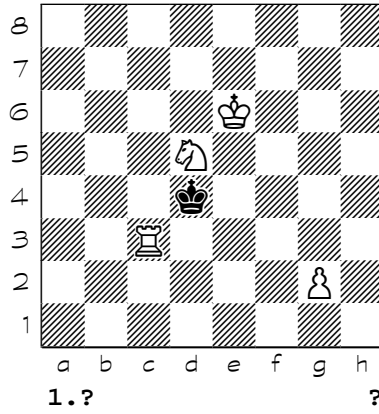


Chess diagrams

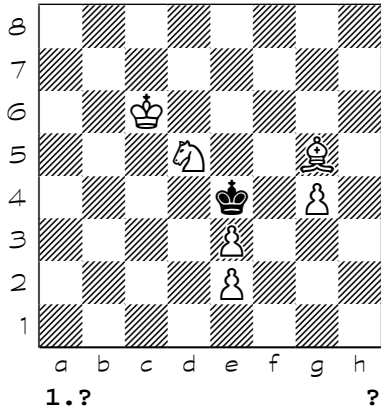
2985



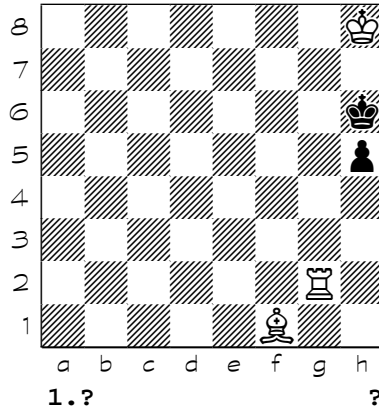
2986



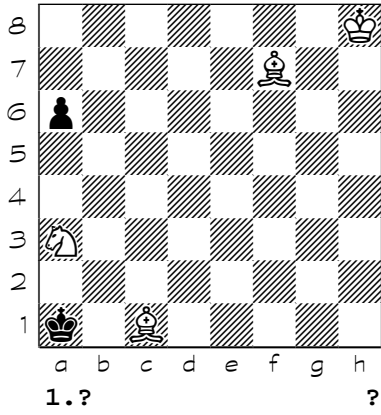
2987



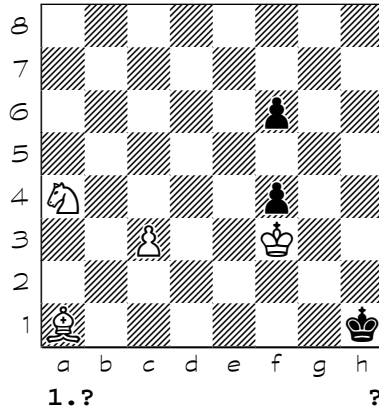
2988



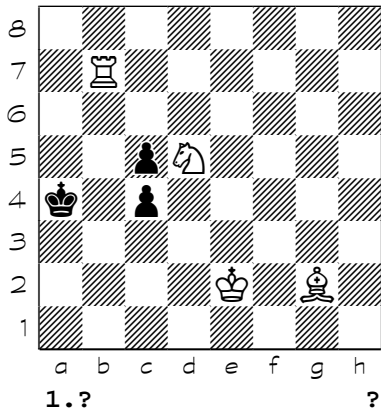
2989



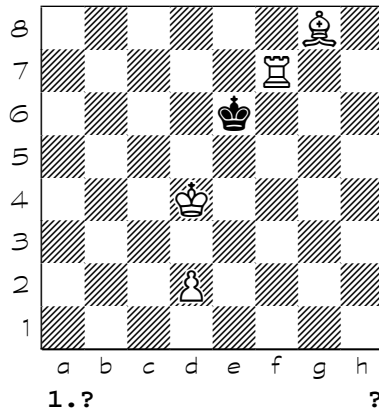
2990



2991

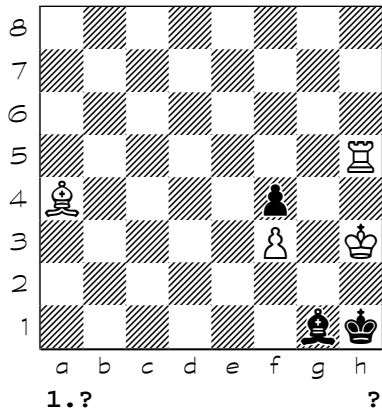


2992

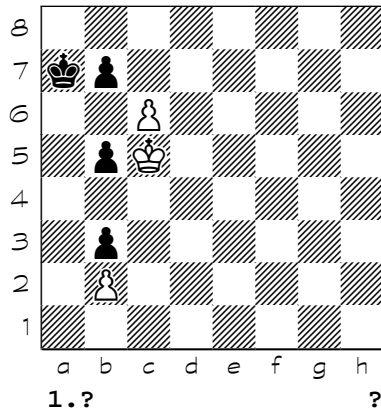


Chess diagrams

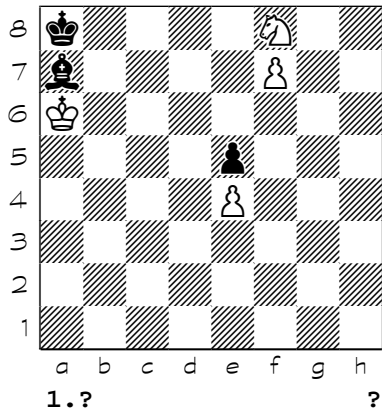
2993



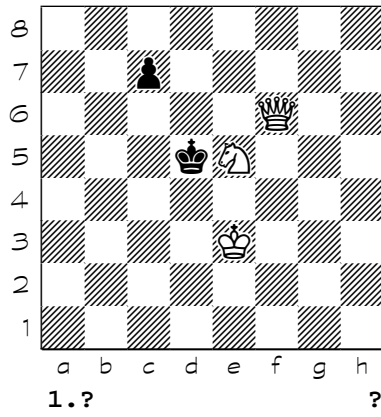
2994



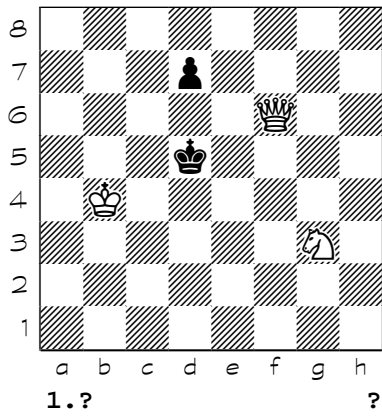
2995



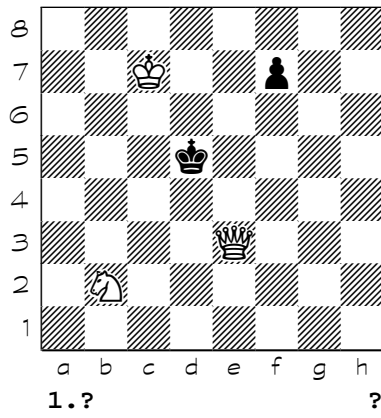
2996



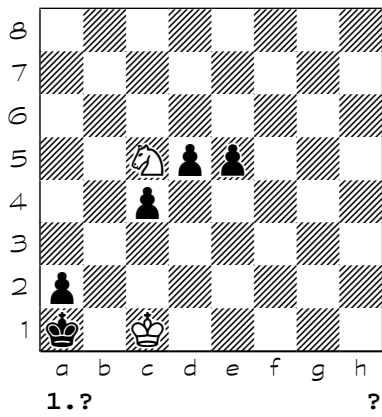
2997



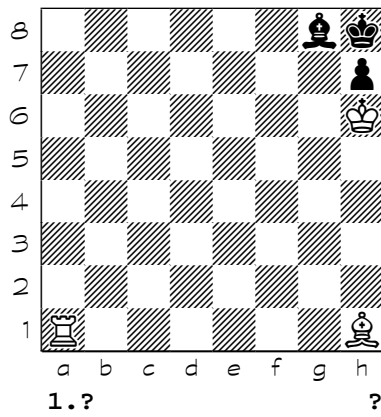
2998



2999



3000



(2801) 1. Rf3 Kc4 (1... Ke4 2. Qc6+ Kd4 3. Rc3 e4 4. Qc5#) 2. Kc2 e4 3. Rf5 e3 4. Qc5#
(2802) 1. N2e3 Ne7+ (1... Nxe3+ 2. Nxe3 e4 3. Ng2 (3. Nd5 e3 4. Nf6#) 3... e3 4. Nf4#) 2. Bxe7 e4
3. Nd5 e3 4. Nf4#
(2803) 1. Be4+ Kc4 2. Ba3 c2 3. Bxc2 Kd5 4. Bb3#
(2804) 1. Bxb7 d6 2. Ke6 d5 3. Ba6 Kc6 4. Rc8#
(2805) 1. Rxb5 Ka3 2. Rg8 Ka4 3. Rb7 (3. Rb1) 3... f5 4. Ra8#
(2806) 1. Bc3 Kc5 2. Qe6 Kb5 3. Qd6 Ka4 4. Qb4#
(2807) 1. Qc2 e2 2. Qd3+ Kc5 3. Qc3+ Kd6 4. Qc6#
(2808) 1. Na7 g3 (1... Kc4 2. Bb2 g3 3. Qc3+ Kd5 4. Qc6#) (1... Kd6 2. Qe5+ Kd7 3. Bb4 g3 4.
Qe7#) 2. Bf6 g2 3. Qe5+ Kc4 4. Qb5#
(2809) 1. Nc3+ Kc4 2. Kd2 Kb3 3. Ra2 Kb4 4. Kc2 Kc4 5. Ra4#
(2810) 1. Nh6 Ke4 2. Nxc4 Kd5 3. Bc7 Kc5 (3... Ke4 4. g3 Kd5 5. Nf6+ Kc5 6. Nd7+ Kd5 7. Bf4
Ke4 8. Nf6#) 4. g3 Kd5 5. Nf6+ Kc5 6. Nd7+ Kd5 7. Bf4 Ke4 8. Nf6#
(2811) 1. Nd3 Be6 2. Nc5 Bc4 3. Ne4 Bb5 4. Nf6 Bc6 5. c4 Bd7 6. Nd5 f5 7. Nc7#
(2812) 1. Nd4 Kc5 2. Nc2 Kd5 3. Kxd7 Kc5 4. Bd4+ Kd5 5. e4#
(2813) 1. Rd1 b2 2. Kc2 b1=Q+ 3. Rxb1 Kd4 4. Rb4#
(2814) 1. Bg3 f6 2. Ke6 f5 3. Kd7 f4 4. Kc7 fxg3 5. Bxb7#
(2815) 1. Rg8 Kxc8 (1... Ke6 2. Rg5 Kf7 3. Kd7 Kxf8 4. Ke6 Kxe8 5. Rg8#) 2. Ke7 Kh7 3. Kf7 Kh8
4. Bg7+ Kh7 5. Nf6#
(2816) 1. Qc6 Kg4 (1... Ke5 2. Qg6 Kd5 3. Bd4 Kxd4 4. Qd6#) 2. Qf3+ Kh4 3. Qg2 Kh5 4. Qg5#
(2817) 1. Bc4 axb5 2. Kb3 bxc4+ 3. Kxc4 Ka4 4. Ra6#
(2818) 1. Nd3 g2 2. Ne1 g1=Q 3. Qe4+ Kh2 (3... Qg2 4. Qxc2#) 4. Qh4#
(2819) 1. Qg4 Kf6 2. Ke8 e5 (2... Ke5 3. Ke7 Kd5 4. Qxe6#) 3. Nc5 e4 4. Nd7#
(2820) 1. Kf2 Kf4 (1... Kh4 2. Kxf3 g4+ 3. Kf4 Kh5 4. Qh1#) 2. Qa1 Kg4 3. Qh8 Kf4 (3... Kh5 4.
Bf5#) 4. Qd4#
(2821) 1. Na3 e5 2. Be3 e4 (2... Ke4 3. Qe6 Kf3 (3... Kd3 4. Qc4#) 4. Qg4#) 3. Bf4 Kc5 4. Qd6#
(2822) 1. Kg3 Bf2+ 2. Rxf2 Kg1 3. Bxc2 h1=N+ 4. Bxh1 Kxh1 5. Rf1#
(2823) 1. Ke6 d3 (1... f3 2. Ke5 f2 3. Kf5 d3 4. Qxf2#) 2. Ke5 d2 3. Nd6 d1=Q 4. Nc4#
(2824) 1. Bh7 Ke5 2. e4 Kf6 3. Bf5 Ke5 4. Nf7+ Kf6 5. Nh6 Ke5 6. Ng4#
(2825) 1. Ke2 Kc2 2. Qc6+ Kb1 3. d4 Ka1 4. Qa8+ Kb1 5. Kd3 Kc1 6. Qh1#
(2826) 1. Kh2 Kh4 (1... Kg5 2. g3 Kh5 3. Kh3 Kg5 4. f4+ Kh5 5. g4#) 2. g3+ Kg5 3. Kg2 Kh5 4. f4
Kg4 5. Nf6#
(2827) 1. Ra6 d5 2. Ka5 d4 3. Na3 d3 4. Nb5 d2 5. Ra7 Kc6 6. Rc7#
(2828) 1. Nc7 Bf7 2. Nb5 Be8 3. Nd6 Bg6 4. Nc8 Bf5 5. Ne7 Be6 6. Nhg6 Bd5 7. Nf8 Be6 8. Nh7
Bd5 9. Nf6#
(2829) 1. Kc3 Ke3 2. Ne5 Kf4 3. Nd3+ Ke3 4. Rg1 Ke2 5. Re1#
(2830) 1. Rb6 ({iia.daoaiea} 1. Nf4 Kh6 2. Bc3 Kg5 3. Rb6 Kf5 4. Rb5#) 1... Kf5 2. Bc3 Kg5 3. Nf4
Kf5 (3... Kh4 4. Bf6#) 4. Rb5#
(2831) 1. Re6 Kb5 2. Ke4 Kc5 (2... Ka5 3. Bc4 Ka4 4. Ra6#) 3. Ba4 Kc4 4. Rc6#
(2832) {b} d2-e3 } 1. Re1 Ne4 2. Rxe4 Be5 3. Rxe5 Kg8 4. Re8#
(2833) 1. Kd4 Kg1 (1... Ke1 2. Ke3 Kf1 3. h4 Kg1 4. Qh3 Kf1 5. Qh1#) 2. h4 Kf1 3. Ke3 Kg1 4. Qh3
Kf1 5. Qh1#
(2834) 1. Ke5 Kc5 (1... c5 2. Ne2 Kd3 3. Nc1+ Ke3 (3... Kc4 4. Qb3#) 4. Qe2#) 2. Nd3+ Kc4 3. Ke4
c5 4. Ne5#
(2835) 1. Qc5+ g5 2. Qc2 g3 3. Qe2+ Rg4 4. Qe8+ Kh4 5. Qh8#
(2836) {b}e1-e3 c}d1-e3} 1. Nb5 Ka2 2. Nc3+ Kxb3 3. Kc5 Kxc3 4. Rd3#
(2837) 1. Rb8 Bg3 2. Ra8 Bf3 3. Ra7 Bb7+ 4. Rxb7 Bc7 5. Ra7 Bb6 6. Rh7#
(2838) 1. Bb3 a4 2. Ba2 a3 3. Ne2 Kxa2 4. Kc2 Ka1 5. Nc1 a2 6. Nb3#
(2839) {b}c3-d3} 1. Nb4 Kc1 2. Rc2+ Kb1 3. Bc4 Ka1 4. Nd3 Kb1 5. Rc1#
(2840) {b}c5-b4 c}d1-a4} 1. Re6 Kc3 2. Rb6 Kd4 3. Kd2 Kd5 4. Rd6# { iiceoeey a) iioaeieiaaia a 64-
OI >=5 1999 (A.Aeneia >=32)}
(2841) 1. Qb7 d3 (1... Kd3 2. Qb3+ Ke4 3. Bf6 d3 (3... f4 4. Qh3 d3 (4... f3+ 5. Qxf3#) 5. Qe6#) 4.
Qb6 d2 5. Qd4#) (1... f4 2. Qh7+ Ke3 (2... Ke5 3. Qg6 f3+ (3... d3 4. Qf6+ Ke4 5. Qxf4#) 4. Kxf3 d3
5. Qf6#) 3. Qc2 d3 4. Qf2+ Ke4 5. Qxf4#) 2. Qe7+ Kd4 3. Bd2 f4 4. Kf3 Kc4 5. Qb4#

- (2842) 1. Ka5 c5 (1... Kc5 2. Ne6+ Kd5 3. Nc7+ Kc5 4. Qb4#) 2. Kb6 c4 3. Qe3 c3 4. Qc5#
- (2843) 1. Be2+ Kd5 2. Bh5 Be6 3. Bf3+ Kc4 4. Kc6 Bd7+ 5. Kd6 Kb5 6. Ra3 Be6 7. Bb7 Bc8 8. Bxc8 Kc4 9. Ba6#
- (2844) 1. Rc4 b5 (1... a3 2. Ra4+ Kb5 3. Rcc4 a2 4. Rcb4#) (1... Kb5 2. Ra7 a3 3. Raa4 a2 4. Rcb4#) 2. R4c6+ Ka5 3. Kc5 a3 4. Ra7#
- (2845) 1. Bf5 Bb7 2. Bxg4 Bh1 3. h4 Bb7 4. h5 Bh1 5. h6 Bc6 6. Kxc6 Kb8 7. h7 Ka8 8. h8=Q#
- (2846) {b} >Kg4,Rg4-Kf3 1.Kf5} 1. Re5 Kf4 2. Re8 Kf5 3. Kh5 Kf4 4. Kg6 Kg4 5. Rf8 Kh4 6. Kf5 Kg3 7. Kg5 Kh3 8. Kf4 Kg2 9. Kg4 Kh2 10. Kf3 Kh1 11. Kf2 Kh2 12. Rh8#
- (2847) 1. b6 Kb4 2. b7 Ka5 3. b8=N Kb4 4. Nc6#
- (2848) {ver.8338 IMR-66 1997} 1. Bh3 Kg1 2. Bd4+ Kh1 3. Kb5 b2 4. Bxb2 Kg1 5. Bd4+ Kh1 6. Kc4 b3 7. Kd3 b2 8. Bxb2 Kg1 9. Bd4+ Kh1 10. Ke3 Kg1 11. Kf3+ Kh1 12. Bg2#
- (2849) {4 sol.} 1. a3 (1. c3) 1... Ka5 2. Kb7 Kb5 3. Bd6 Ka5 4. Bb4+ Kb5 5. c4#
- (2850) {b} +bPa5} 1. Bb1 Kb3 2. Kb5 Ka3 3. Bb4+ Kb3 4. Kc5 Kxa4 5. Bc2#
- (2851) 1. Bg4 Kxg4 2. d4 Kh4 3. d5 Kg4 4. d6 Kh4 5. d7 Kg4 6. d8=R Kh4 7. Rd4#
- (2852) {b} a6<=c8} 1. Kg2 h1=Q+ 2. Kxh1 Ka7 3. Kg2 Ka8 4. Kf3 Ka7 5. Ke4 Ka8 6. Kd5 Ka7 7. Kc6 Ka8 8. Bb7+ Ka7 9. Bb6#
- (2853) 1. Bc4+ b5 2. Bd5 Kb6 3. Kb8 Ka6 4. Kc7 Ka7 5. Bb7 d5 6. Bxd5 Ka6 7. Bc6 Ka7 8. Bxb5 Ka8 9. Ba6 Ka7 10. b5 Ka8 11. Bb7+ Ka7 12. b6#
- (2854) 1. Bg7 Ke7 2. Kc7 Ke8 3. d3 Ke7 4. d4 Ke8 5. d5 Ke7 6. d6+ Ke8 7. d7+ Ke7 8. Kc6 Kxd8 9. Bf6#
- (2855) 1. Bf4 Kxd3 2. Kb3 Ke4 3. Kc3 Kd5 4. Ng7 Ke4 5. Nh5 Kd5 6. Nf6#
- (2856) 1. Na6 Ka8 2. Kc7 Ka7 3. Kc8 Ka8 4. Nc7+ Ka7 5. b6#
- (2857) 1. Nd4 Kxd4 2. Kb4 Kd5 3. Rh6 Kd4 4. Rd6#
- (2858) 1. Ne7 Kg5 2. Kg3 Kh5 3. Kf4 Kh4 4. Ng6+ Kh5 5. Nf8 Kh4 6. Ne3 Kh5 7. g3 Kh6 8. Nf5+ Kh5 9. g4#
- (2859) 1. Kf5 h3 2. Nd3 Kh4 3. Nf4 h5 4. Ng6#
- (2860) 1. b4 c6 2. b5 cxb5 3. Bc3 b4 4. Bxb2#
- (2861) 1. Nd5 a5 2. Nb7 Kb3 3. Nxa5+ Ka3 4. Bb4#
- (2862) 1. a5 a6 2. Nc5 Ka7 3. b4 Ka8 4. Nxa6 Ka7 5. b5 Ka8 6. Nc7+ Ka7 7. b6# {iao daoaiy daodi !!! 1...a5}
- (2863) 1. Kg5 Kg8 2. Bh6 Kh8 3. Kf6 Kg8 4. g7 Kh7 5. Kf7 Kxh6 6. g8=Q Kh5 7. Qg6#
- (2864) 1. Ne4 Kf3 2. Ne1+ Ke3 3. Bd3 Kd4 4. Be2 Ke3 5. Bf1 Kd4 6. Nc2#
- (2865) 1. Ne5 Ke3 2. Nd3 Ke4 3. Nb2 Ke3 4. Nd1+ Ke4 5. Kd6 Kxd4 6. Rf4#
- (2866) 1. Kc6 Kd4 2. Nh5 Ke5 3. Bc8 Kd4 4. Nhf4 Ke5 5. Ng2 Kd4 6. Ne1 Ke5 7. Nf3#
- (2867) 1. Be2 Kh2 2. Bf1 Kh1 3. Bg2+ Kh2 4. Ng4#
- (2868) 1. Nf1 g6 2. Bf4 g5 3. Bh2 g4 4. Bg1 g3+ 5. Nxc3#
- (2869) 1. Nf2 Kg5 2. Kg7 Kh4 3. Bg4 Kg5 4. Nf3#
- (2870) 1. Nc5 Kxb8 2. Ka6 Kc8 3. Ba5 Kb8 4. b6 Kc8 5. b7+ Kb8 6. Nd7#
- (2871) 1. f4 Kc6 2. Bf3+ Kc5 3. Rd4 Kxd4 4. Bb6#
- (2872) 1. Bd4 e5 2. Bxe5 d4 3. Nxd4 Kg1 4. Bg3 Kh1 5. Kb7 Kg1 6. Kc6 Kh1 7. Kd5 Kg1 8. Ke4 Kh1 9. Kf3 Kg1 10. Ne2+ Kh1 11. Bg2#
- (2873) 1. g8=N Kh5 2. Kf4 g5+ 3. Kf5 g4 4. fxc4#
- (2874) {B}w P d7} 1. Bf5 Kd4 2. Bd3 Kd5 3. Bc4+ Kd4 4. e3#
- (2875) 1. b4 Kxb4 2. Kb6 Ka4 3. b3+ Kb4 4. c3# {iaeaabaeueiy iiceoeey}
- (2876) {b}e3-f8} 1. Kf6 Ke4 2. Bf2 Kd5 3. g3 Ke4 4. Nc3#
- (2877) 1. Nh4 Kxh4 (1... Kg4 2. Kg6 Kxh4 3. Bg5+ Kg4 4. Ne5#) 2. Kg6 Kg4 3. Ne5+ Kh4 4. Bg5#
- (2878) 1. Ka7 Kc7 (1... Kc8 2. Bxe7 Kc7 3. d6+ Kc8 4. Bd7#) 2. Bxe7 Kc8 3. Bd7+ Kc7 4. d6#
- (2879) 1. g6 hxg6 2. hxg6 h5 3. g7+ Kh7 4. g8=Q+ Kh6 5. Qg7#
- (2880) 1. c7 Ka7 2. c8=R Kxa6 3. Rc7 Kxa5 4. Rc6 Ka4 5. Ra6#
- (2881) 1. Kb1 Kb4 2. Ka1 Ka4 3. Ka2 Kb4 4. c3+ Ka4 5. b3#
- (2882) 1. Kg6 Kf8 2. Nbd6 Kg8 3. Nd7 Kh8 4. Nf7+ Kg8 5. Ne7#
- (2883) 1. Bc2 Kc4 2. Kc6 Kd4 3. f4 Kc4 4. d3+ Kd4 5. e3#
- (2884) 1. Be1 Kg5 2. Bg3 Kh5 3. Nf6+ Kg5 4. Kf7 Kxh6 5. Bf4#
- (2885) 1. Bc1 Kb4 2. Bb2 Ka4 3. Kc6 Kb4 4. Nb6 Kxa5 5. Bc3#

- (2886) 1. Na6 Kd6 2. Kf5 Kd5 3. Bf2 Kd6 4. Bc5+ Kd5 5. e4#
- (2887) {2 sol.} 1. Kf6 (1. Kf4 Ke6 2. Bf8 Kf6 3. g4 Ke6 4. Nc7+ Kf6 5. g5#) 1... Ke4 2. Bc5 Kf4 3. Bf2 Ke4 4. Nc3+ Kf4 5. g3#
- (2888) 1. g3 Kg8 2. Bd5+ Kh7 3. Kf4 Kxg6 4. Bg8 Kxh5 5. Bf7#
- (2889) {b}b2-f2} 1. Be1 Ke3 2. Ke5 Kd3 3. Bf1+ Ke3 4. Kf5 Kxd4 5. Bf2#
- (2890) 1. Ne7 Kd6 2. f4 Kd7 3. c4 Kd6 4. c5+ Kd7 5. c6+ Kd6 6. e5#
- (2891) 1. Ba5 Ka7 2. b5 Ka8 3. Nc3 Ka7 4. Nd5 Ka8 5. Nc7+ Ka7 6. b6#
- (2892) 1. Bh5 Kh7 2. g4 Kh8 3. g5 Kh7 4. g6+ Kh8 5. g7+ Kh7 6. Bg6#
- (2893) {B} f4\diamondb2} 1. Be3 Ka5 2. Ba7 Ka4 3. c5 Ka5 4. Kb3 Kb5 5. c4+ Ka5 6. Bb6#
- (2894) {b}d3\diamondf2} 1. Ke2 Kh4 2. Kf1 Kg4 3. Kg1 Kh4 4. Kh2 Kg4 5. f3+ Kh4 6. g3#
- (2895) 1. Kc6 Ke5 2. e3 Ke6 3. Bg6 Ke5 4. d4+ Ke6 5. d5+ Ke5 6. f4#
- (2896) 1. Kc6 Ke5 2. Bg6 Kd4 3. c3+ Ke5 4. d4+ Ke6 5. Kc7 Kxd5 6. Bf7#
- (2897) 1. Bh5 Kf6 2. Kd6 Kf5 3. Ke7 Ke5 4. Bg6 Kd5 5. Be4+ Ke5 6. f4#
- (2898) 1. Be3 Ke5 2. c4 Kf5 3. Be8 Ke5 4. Ba4 Kf5 5. Bc2+ Ke5 6. f4#
- (2899) 1. Bh7 Ke6 2. Kc6 Kf7 3. Kd7 Kf8 4. Be7+ Kf7 5. Kd6 Kxe8 6. Bg6#
- (2900) 1. Kg4 Ka5 2. Kf5 Kb5 3. Ke6 Ka5 4. Kd7 Kb5 5. Kc7 Ka5 6. Qb6#
- (2901) 1. f4 Kd8 2. Ne7 Ke8 3. f5 Kf8 4. f6 Ke8 5. Kc7 Kf8 6. Ng6+ Ke8 7. f7#
- (2902) 1. Ne7 Kc5 2. Nc8 Kc4 3. Ke5 Kc5 4. Ke6 Kc4 5. Nb6+ Kc5 6. Na4+ Kc4 7. b3#
- (2903) 1. Bh5 Kf8 2. g3 Kg8 3. g4 Kf8 4. g5 Kg8 5. g6 Kf8 6. g7+ Kg8 7. f7#
- (2904) 1. Bh8 Kd6 2. Bf6 Kd5 3. Na3 Kd6 4. Nb5+ Kd5 5. Nc7+ Kd6 6. Kb7 Kxc5 7. Be7#
- (2905) 1. Kc6 Kb8 2. Bb7 Ka7 3. Bc8 Kb8 4. Kd7 Ka7 5. Kc7 Ka8 6. Bb7+ Ka7 7. Bb6#
- (2906) 1. Bd5+ Kb8 2. Ke6 Kc8 3. Ba5 Kb8 4. Kd7 Ka7 5. Kc7 Ka6 6. Bb6 Kb5 7. Bc4#
- (2907) 1. Bd6 Kd4 2. Be6 Ke4 3. Kg3 Kd4 4. Kf2 Ke4 5. Ke2 Kd4 6. c3+ Ke4 7. d3#
- (2908) 1. b5 Kb8 2. b6 Ka8 3. Kf3 Kb8 4. Ke4 Ka8 5. Kd5 Kb8 6. Kc6 Ka8 7. Rc8#
- (2909) 1. Bg7 Kg5 2. Rf6 Kh5 3. Kc4 Kg5 4. Kd5 Kh5 5. Ke6 Kg5 6. Kf7 Kh5 7. Rf5#
- (2910) 1. Nd4 Kb8 2. Ne6 Ka8 3. b3 Kb8 4. b4 Ka8 5. b5 Kb8 6. b6 Ka8 7. b7+ Kb8 8. c7#
- (2911) 1. Ng3 Kg8 2. Ngf5 Kf8 3. g3 Kg8 4. g4 Kf8 5. g5 Kg8 6. g6 Kf8 7. g7+ Kg8 8. Ne7#
- (2912) 1. b5 Ka5 2. Kxa3 Kb6 3. Kb4 Ka7 4. Kc5 Ka8 5. Kc6 Ka7 6. Ne8 Ka8 7. Nec7+ Ka7 8. b6#
- (2913) 1. Ke6 Kc5 2. Be8 Kd4 3. Bb5 Kc5 4. Ba6 Kd4 5. c3+ Kc5 6. d4+ Kc6 7. Ke7 Kxd5 8. Bb7#
- (2914) 1. Kd1 Ka5 2. Kc1 Ka6 3. Kb2 Ka5 4. Ka3 Ka6 5. Nc1 Ka5 6. Bb7 Kb5 7. Nb3 Kc4 8. Nd6#
- (2915) 1. Bc6 Ka6 2. c4 Ka7 3. c5 Ka6 4. Bb8 Ka5 5. Bb7 Kb5 6. Ba7 Ka5 7. Bb6+ Kb5 8. a4#
- (2916) 1. Bb4 d6 2. Ke6 Ke4 3. Be2 Kd4 4. Ba3 Ke4 5. Bc1 Kd4 6. Be3+ Ke4 7. Kf6 Kxd5 8. Bf3#
- (2917) 1. Kh7 g3 2. Kh6 Kg8 3. Nxc3 Kf8 4. Nf5 Kg8 5. g4 Kf8 6. g5 Kg8 7. g6 Kf8 8. g7+ Kg8 9. Ne7#
- (2918) 1. Nc6 Kxc6 2. b8=R Kd6 3. Re8 Kc6 4. Re6#
- (2919) 1. d7 Kc7 2. Nc6 Kxc6 3. d8=R Kc7 4. Rc8#
- (2920) 1. Bh8 c5 2. Kxc5 c6 3. Kxc6 Kd4 4. Rf3#
- (2921) {b} b7-h7} 1. Bg6+ Ne4+ 2. Bxe4+ Kxe4 3. b8=Q Kd3 4. Qb1#
- (2922) 1. d8=N+ Qxd8 2. Qf5+ Kxe7 3. Qf6+ Kxe8 4. Qf7#
- (2923) 1. b8=N+ Kc7 2. Nxa6+ Kd7 3. Kb5 Ke6 4. Kb6 Kd5 5. Nc7#
- (2924) 1. Ra5+ Na6+ 2. Rxa6+ bxa6 3. Kxc8 a5 4. b7+ Ka7 5. b8=Q+ Ka6 6. Qb7#
- (2925) 1. Bc7 Ke7 2. Kg7 Ke8 3. f3 Ke7 4. f4 Ke8 5. f5 Ke7 6. f6+ Ke8 7. f7+ Ke7 8. Kg6 Kxf8 9. Bd6# {(ver.problem A.Mandlera 7# 1960)}
- (2926) 1. Be6+ Kh7 2. Kf4 Kxg6 3. Bg8 Kxh5 4. Bf7#
- (2927) 1. c5 Kb5 2. Kb3 Ka5 3. Kxc3 Ka4 4. Kb2 Kb5 5. Kb3 Ka5 6. Bb4+ Kb5 7. c4#
- (2928) 1. Bb6 Kxb6 2. Kb8 Ka6 3. Kc7 Ka7 4. Bb5 Ka8 5. Ba6 Ka7 6. b5 Ka8 7. Bb7+ Ka7 8. b6#
- (2929) 1. Bh6 Bb6 (1... Bf4 2. Rxf4+ Ke5 3. Rc4 Kd6 4. Bf4+ Kd5 5. Ne3#) 2. c7 Bd4 3. c8=Q+ Ke4 4. Qh3 Kd5 5. Qe6#
- (2930) *
- (2931) 1. e4 Kxe4 (1... Kf4 2. Kf6 Kxe4 3. Rd7 Kf4 4. Rd4#) 2. Ke6 Kf4 3. Rg7 Ke4 4. Rg4#
- (2932) 1. Qb2+ Kh7 2. Qc2+ Kh8 3. Qc3+ Kh7 4. Qd3+ Kh8 5. Qd4+ Kh7 6. Qe4+ Kh8 7. Qe5+ Kh7 8. Qf5+ Kh8 9. Qf6+ Kh7 10. Qg6+ Kh8 11. Qg8#
- (2933) 1. Rd4 Ke6 2. Nd3 Kf5 3. Kf7 Kg5 4. Rf4 Kh5 (4... Kh6 5. Rf5 Kh7 6. Rh5#) 5. Kf6 Kh6 6. Rh4#

- (2934) 1. Bc2 a6 2. Bd1 a5 3. Bb3 axb3 4. Kxb3 a4+ 5. Kc2 a3 6. Nd5 Kxa2 7. Nb4+ Ka1 8. Kc1 a2 9. Nc2#
- (2935) 1. Kd6 Ka5 2. Kxd7 Ka6 3. Kc6 Ka5 4. Ra7#
- (2936) 1. Kc4 Ka3 (1... Ka5 2. Nb3+ Ka6 3. Nxc5+ Ka5 4. Rb5#) 2. Nc2+ Ka2 3. Kc3 c4 4. Rb2#
- (2937) 1. Rd3 c6 (1... c5 2. Nc7 Kb4 3. Nc6+ Ka3 4. Rd8 Ka4 5. Ra8#) 2. Rd1 c5 3. Nc7 Kb4 4. Ra1 Kc4 5. Ra4#
- (2938) 1. Qd1 f6 (1... f5 2. Qd2 Kb7 3. Qa5 Kc6 (3... Kc8 4. Qc7#) 4. Qb5#) (1... Kb7 2. Qd7+ Ka8 (2... Ka6 3. Bb8 f5 4. Qb5# (4. Qa7#)) 3. Qc7 f5 4. Qb8#) 2. Qd5 f5 3. Qc6+ Kd8 4. Bg5#
- (2939) 1. Nd4 Kg1 2. Kc4 Kf1 (2... Kh1 3. Be4 Kg1 4. Nf3+ Kf1 5. Bd3#) 3. Be2+ Kg1 4. Nf3+ Kh1 5. Nf2#
- (2940) 1. Qc7 d6 (1... d5 2. Kg3 Ke3 3. Qc3+ Ke2 (3... Ke4 4. Kg4 d4 5. Qe1#) 4. Qd3+ Ke1 5. Nc2#) 2. Qc1 d5 3. Na2 Kd3 4. Kf3 Kd4 (4... d4 5. Nb4#) 5. Qc3#
- (2941) 1. Rc5 c2 2. Rxc2 Kxd5 3. Ba2+ Ke5 4. Rc5#
- (2942) {b} e7-h2 c) h5-h2 d)h5-f5} 1. f8=R Kh6 2. Rf5 Kh7 3. Rf6 Kh8 4. Rh6#
- (2943) 1. Nf1 Bc6 2. Ng3 Bb7 3. Nf5 Bd5 4. Nd6 Bc6 5. Kxc6 Kxa7 6. Kb5 Ka8 7. Ka6 Kb8 8. Kb6 Ka8 9. Nxe4 Kb8 10. Nd6 Ka8 11. e4 Kb8 12. e5 Ka8 13. e6 Kb8 14. e7 Ka8 15. e8=Q#
- (2944) 1. Nf3 Kh7 2. f7 Kg7 3. Ke8 Kf6 4. f8=Q+ Ke6 5. Qc5 Kf6 6. Qg5+ Ke6 7. Qe5#
- (2945) 1. Qg2+ Ke1 2. Nd3+ Kd1 3. Nab4 Qf2 (3... Qg1+ 4. Kxg1 Nd6 5. Qc2#) 4. Qxf2 Nd6 5. Qe1# (5. Qc2#)
- (2946) 1. Nd4 Kb8 2. Re7 Kc8 (2... Ka8 3. Nb5 Kb8 4. Re8#) 3. a7 Kd8 4. a8=Q#
- (2947) 1. Kb2 Kd6 2. Qf6+ Kc5 (2... Kc7 3. Qc6+ Kb8 4. Qb7#) 3. Bd7 Kb4 4. Qc3#
- (2948) 1. Nf4 Kd4 (1... Kd6 2. Nf7+ Kc5 3. Ne6+ Kc4 4. Ne5#) 2. Qd5+ Ke3 3. Ngh3 c2 4. Qd3#
- (2949) 1. Bh6 Kd5 2. Rd7+ Ke4 (2... Kc4 3. Be3 Kc3 4. Rc7#) 3. Kg5 Ke3 4. Kf5#
- (2950) 1. Ne6 d3 (1... Kf3 2. Nxd4+ Kf2 3. Be3+ Ke1 4. Qg1#) 2. Bd2 Kf3 3. Nf4 Ke4 4. Qd5#
- (2951) 1. Bf4 Kf2 2. Bh2+ Ke1 3. Bg1 Kd1 4. Rc5 Ke1 5. Rc1#
- (2952) 1. Rc4 Bf5 (1... Bf1 2. Rc2 Be2 3. Kd2+ Bd1 4. Rxd1#) 2. Rc2 Bd3 3. Kd2+ Bf1 4. Rxf1#
- (2953) 1. Na3 Ke5 (1... c4 2. Nxc4 Kc5 3. Kd3 Kb4 4. Qa5+ Kb3 5. Qa3#) 2. Qg6 Kd5 3. Nb5 Kc4 (3... Ke5 4. Nc7 c4 5. Qe6#) 4. Qb1 Kd5 5. Qe4#
- (2954) *
- (2955) 1. Bc2 d5 2. Kc6 Kc4 3. Nxd5 Kd4 4. Re4#
- (2956) 1. f5 Kd3 (1... Kf3 2. Qf1+ Kg4 3. Qf4+ Kh3 (3... Kh5 4. Ng3#) 4. Qg3#) 2. Ng3 e2 3. Nh5 e1=Q 4. Nf4#
- (2957) 1. g4 Rf1 2. Ne4 Rxf7+ 3. Kxf7 Kh7 4. g5 Kh8 5. Kf8 Kh7 6. Nd6+ Kh8 7. Nf7#
- (2958) 1. Nb4+ Kb2 2. Nd3+ Ka2 3. Ra3+ Kb1 4. Ra2 Kxa2 5. Nc3#
- (2959) 1. Bc7 Kd5 2. Nd6 Ke5 3. Ne8+ Kd5 4. Bd6 Ke4 5. Nf6#
- (2960) 1. Rd2 Bc4 2. Rd1 Ba2 (2... Rf2 3. Rd8+ Ka7 4. Nc6+ Ka6 5. Ra8+ Kb5 6. Ra5#) 3. Rd3 Bb3 4. Rxb3 Rc8+ 5. Nxc8 e5 6. Ra3# (6. Rb8#)
- (2961) 1. Rg2+ Kh7 2. Nf6+ Kh6 3. Bc3 Ne6 4. Bd2+ Ng5 5. Rxc5 h1=Q+ 6. Rg2#
- (2962) 1. Ng7 e6 (1... Kf4 2. Qe3+ Kg4 3. Kf2 Kh4 4. Qg3#) 2. Qd6 e5 3. Qd8 Kf4 4. Qh4#
- (2963) 1. Rf6 Ke4 (1... Kd4 2. Nd3 Kc4 3. Rb6 Kd5 4. Nf6+ Kc4 5. Rb4#) 2. Nd3 Kd5 3. Nc7+ Kc4 4. Rb6 Kd4 5. Rb4#
- (2964) {b} a7-a6 7# } 1. Qe4+ Kd7 2. Qh7+ Rf7 3. Qxf7+ Kd8 4. Kd6 Kc8 5. Qc7#
- (2965) 1. Rf3 Ke4 2. Bg2 Ke5 3. Bf1 Ke4 4. Be2 Ke5 5. Ba6 Ke4 6. Bb7+ Ke5 7. Kc6 Ke4 { idaaeoanoaiiee R.le Pontois"Die Schwalbe" 1977 7#} 8. Kd6# { a aodiaea Niaia ia f5 eiiue}
- (2966) 1. Ke2 Ng1+ (1... Kc1 2. Rc8+ Kb1 3. Nd2+ Ka1 4. Ra8#) (1... Ka1 2. Ra8+ Kb1 3. Nd2+ Kc2 4. Rc8#) 2. Kd1 Ne2 3. Nd2+ Ka1 4. Ra8#
- (2967) 1. Be7 Qc8+ 2. Re6 Qxe6+ (2... Qg8 3. Re1+ Qg1 4. Bc5 Qxe1 5. Rxe1#) (2... Kg1 3. Re1+ Kf2 4. Bxh4+ Kf3 5. Rf1#) 3. Rxe6 Kg1 4. Bxh4 Kf1 5. Re1#
- (2968) {aeie} 1. Qc7 b5+ (1... b6 2. Qc8+ Ka7 3. Kb5 a4 4. Kc6 a3 5. Qb7#) (1... Ka7 2. Kxa5 Ka8 3. Qc5 b6+ 4. Kxb6 Kb8 5. Qf8#) 2. Kb3 a4+ 3. Kb4 a3 4. Kc5 a2 5. Qb6#
- (2969) 1. Nf6 Kc4 (1... Ke3 2. Rf5 Kd3 3. Rf4 Ke3 4. Nd5+ Kd3 5. Rd4#) 2. Ne4 Kd3 3. Nd6 Ke3 4. Rf5 Kd3 5. Rf3#
- (2970) 1. Qc1 Kxe4 2. Qc7 Kf3 3. Qc4 Kf2 4. Qf1#
- (2971) *

- (2972) 1. Bc3 Ke2 2. Bc2 Ke3 3. Bd1 Kd3 4. Rf3#
- (2973) *
- (2974) {a} d6-d8,a7-d4} 1. Nc8 b6 2. Na7 b5 3. Nxb5 Kxb5 4. Kxc3 Ka4 5. Rd5 Kxa3 6. Ra5#
- (2975) 1. Bg2 c5 2. Bh3 c4 3. Bg2 c3 4. Bh3 c2 5. Nd3+ Kd1 6. Bg4#
- (2976) 1. Be5 Qf4 2. Ne3 Qxf2+ 3. Kxf2 f4 4. Ng4 f3 5. Kf1 f2 6. Nxf2#
- (2977) 1. Qf7 e2 2. Nf2 f3 3. Nd3+ Ke4 4. Kc4 Ke3 5. Qf4#
- (2978) 1. Rc7 f6 (1... Kd5 2. Nc3+ Kd4 3. Nb5+ Kd5 4. c4#) 2. Rc6 Kd5 3. Nb4+ Kd4 4. c3#
- (2979) 1. Ke7 Kg8 2. Kf6 Kf8 3. h7 Ke8 4. Ke6 Kd8 5. Kd6 Kc8 6. h8=Q+ Kb7 7. Qb2+ Ka6 8. Kc6 Ka7 9. Qb7#
- (2980) 1. Bc6 Kxb8 2. Nc3 Ka7 3. Nb5+ Ka6 (3... Kb8 4. Bc7#) 4. b8=N#
- (2981) 1. Qg8 Ra7 (1... Rb7 2. Qg3+ Ka7 3. Qc7 Rxc7 4. Kxc7 Ka8 5. Bb7+ Ka7 6. b6#) 2. b6 Ra3 3. Qd5 Rd3 4. Qxd3 Ka8 5. Qa6+ Kb8 6. Qb7# (6. Qa7#)
- (2982) {b} e2-f2} 1. Kf5 Kd5 2. Rc3 Kd4 3. Be5+ Kd5 4. e4#
- (2983) 1. O-O-O Kf5 (1... b3 2. Kb2 Kf5 3. Rg1 Ke5 4. Rg5#) 2. Rg1 b3 3. Kb2 Ke5 4. Rg5#
- (2984) {b} a4-e8} 1. Nd4 Kb4 2. Bd1 Kc3 3. Kc5 Kd3 4. Ne2 Ke4 5. Bc2#
- (2985) 1. Bf7 Ke5 2. Ne6 Kf5 3. Nd8 Ke5 4. Be6 Kd4 5. Nc6#
- (2986) {b} g2-a2} 1. g3 Ke4 2. g4 Kd4 3. Kd6 Ke4 4. Kc5 Ke5 5. Re3#
- (2987) 1. Ne7 Ke5 2. Kd7 Ke4 3. Bh6 Ke5 4. g5 Ke4 5. g6 Ke5 6. g7 Ke4 7. g8=Q Ke5 8. Qe6#
- (2988) 1. Rg8 h4 2. Bh3 Kh5 3. Kg7 Kg5 4. Rf8 Kh5 5. Rf5#
- (2989) 1. Kg7 a5 2. Kf6 a4 3. Ke6 Ka2 4. Kd6+ Ka1 5. Bd2 Kb2 6. Kc5 Kxa3 7. Bc1# { 5 iine.oiaeia anoda~~aeinue o M.Zucker "Tribune" 1978 5#}
- (2990) 1. c4 Kh2 2. c5 f5 {! iadaoaiinoue}
- (2991) 1. Ne3 Ka5 (1... Ka3 2. Nxc4+ Ka2 3. Be4 Ka1 4. Ra7#) 2. Nxc4+ Ka6 3. Rb8 Ka7 4. Ra8# {idaaeoanoaiiee H.Schaffer "W.Sz." 1937 4#}
- (2992) {b} d2-c2} 1. Kc5 Ke5 2. Rf3 Ke4 3. Bd5+ Ke5 4. d4# { idaeoanoaiiee P.Drumare "Themes64" 4# b)c2-d2}
- (2993) 1. Rb5 Bd4 2. Rb1+ Bg1 3. Bd1 Bd4 4. Be2+ Bg1 5. Bf1 Bh2 6. Bg2#
- (2994) 1. c7 Ka6 (1... b4 2. c8=Q b5 3. Qd7+ Ka6 4. Qe7 (4. Qf7) 4... Ka5 5. Qa7#) (1... b6+ 2. Kc6 Ka6 3. c8=Q+ Ka5 4. Qf8 b4 5. Qa8#) 2. c8=Q Ka7 3. Kxb5 b6 4. Kc6 b5 5. Qb7#
- (2995) 1. Nd7 Bc5 2. Nxc5 Kb8 3. Kb6 Ka8 4. f8=Q#
- (2996) 1. Qe7 c5 (1... c6 2. Kf4 Kd4 3. Qb4+ Kd5 4. Kf5 c5 5. Qd2#) 2. Qc7 c4 3. Kf4 Ke6 (3... c3 4. Qc6+ Kd4 5. Qc4#) 4. Qd7+ Kf6 5. Qf7#
- (2997) {a} ia 90* idioea ~~an.nodae 4#} 1. Kb5 d6 2. Qe7 Kd4 3. Kb4 d5 4. Qe1 Kd3 5. Qc3#
- (2998) 1. Na4 Kc4 2. Kc6 Kb4 3. Qc3+ Kxa4 4. Kc5 f5 5. Qb4#
- (2999) 1. Na4 d4 (1... e4 2. Nc3 e3 3. Ne2 d4 4. Nxd4 e2 5. Nc2#) 2. Nb2 e4 3. Nxc4 e3 4. Na5 e2 5. Nb3#
- (3000) 1. Bc6 Bd5 2. Ra8+ Bg8 3. Be8 Bd5 4. Rb8 Bg8 5. Rd8 Be6 6. Bf7#