

Rozsáhlá sbírka šachových problémů (mnohotažek)

Strmilovská zastavení bohyně Caissy

19.díl

diagramy 3601-3800

Jak jinak

Když močí pes na květinu
Ta urážka jí bolí
Pak psisko hnusné páchnoucí
Přetáhnout musíš holí

Zavyje zvíře odporné
Po holi chňapne možná
Dostane pak ran mnohem víc
Než marnost vzdoru pozná

Dlouhá musí být na psa hůl
Dlouhá a plná suků
Že je ten čokl prašivý
Nešpiň si o něj ruku

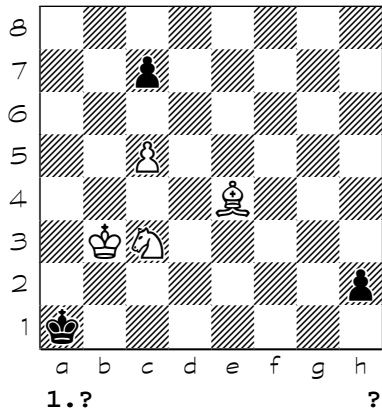
Spráskaný pes se odplazí
Vyvane i smrad jeho
Květinka se ti odmění
když rozzáří se něhou.

Hyacint

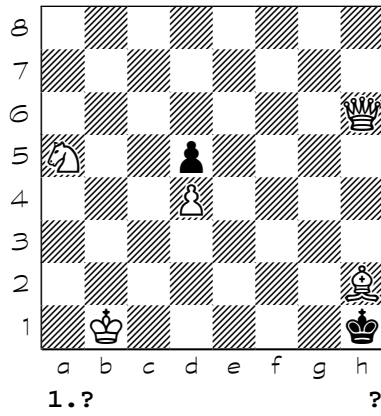
<http://www.strmilov.cz/>

Chess diagrams

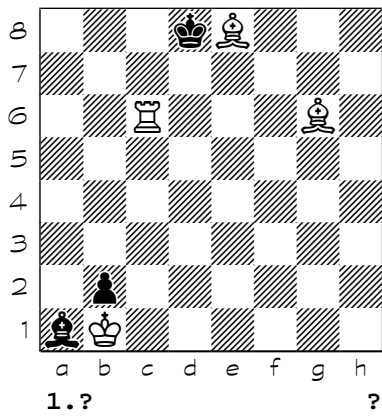
3601



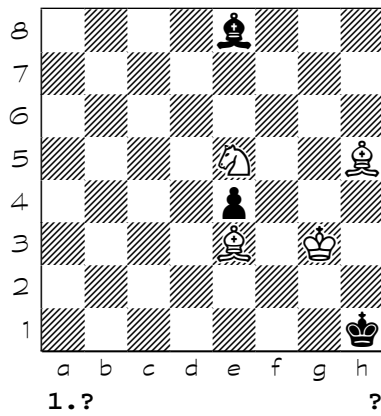
3602



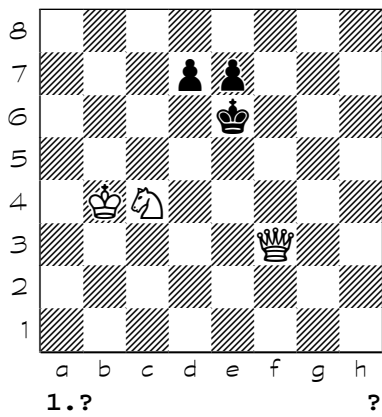
3603



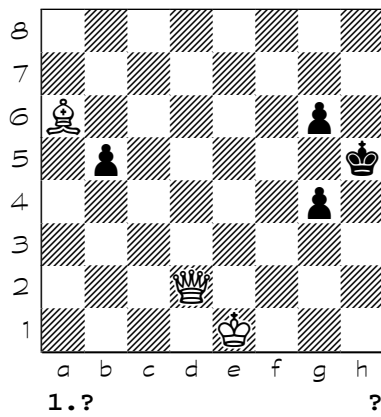
3604



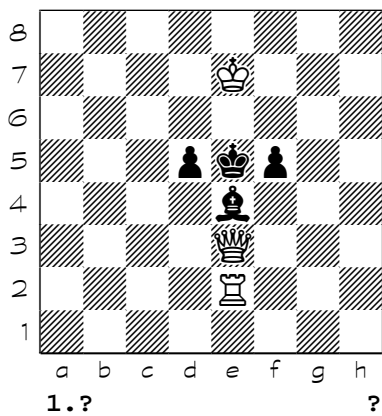
3605



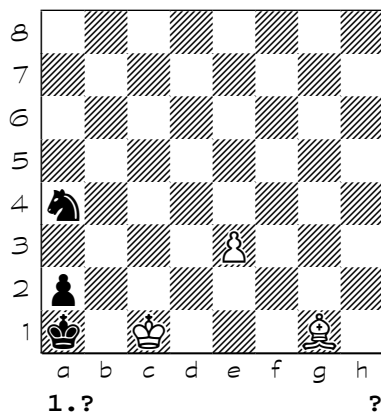
3606



3607

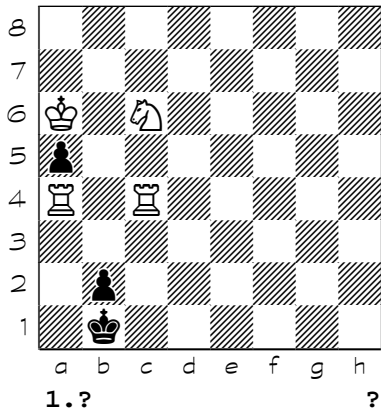


3608

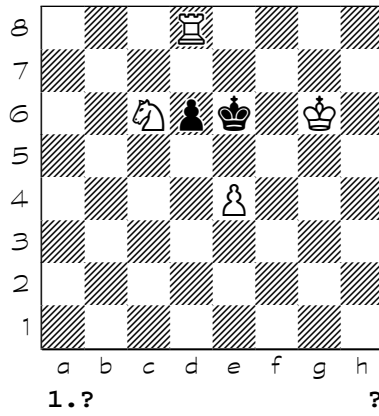


Chess diagrams

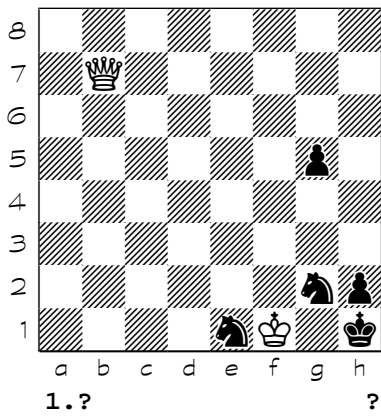
3609



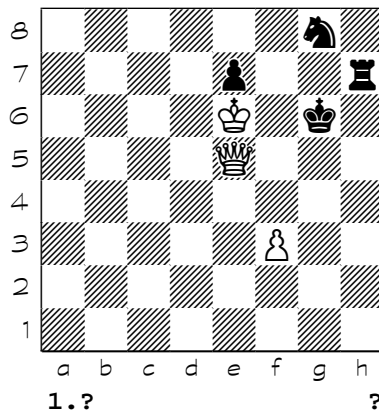
3610



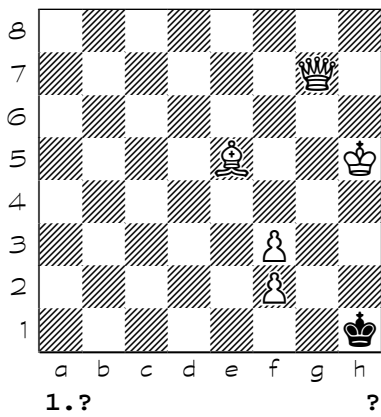
3611



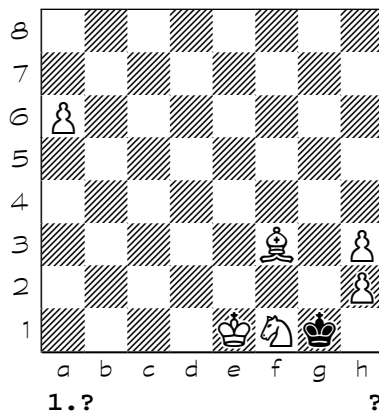
3612



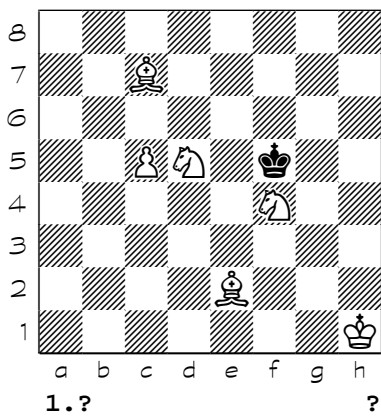
3613



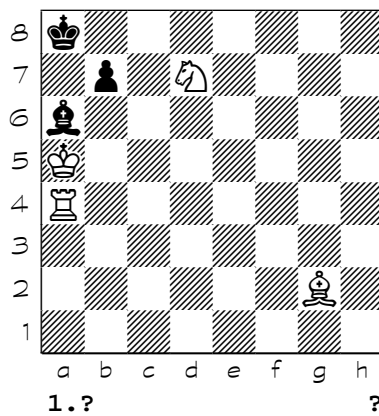
3614



3615

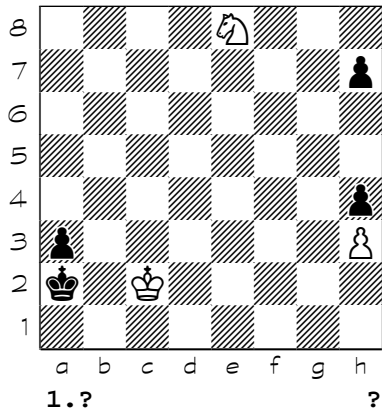


3616

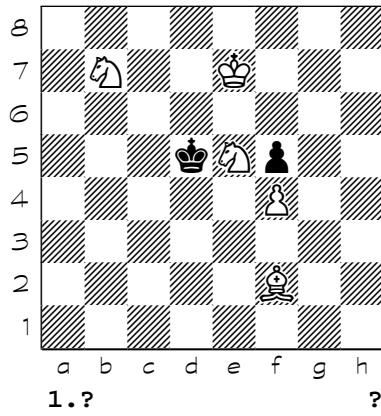


Chess diagrams

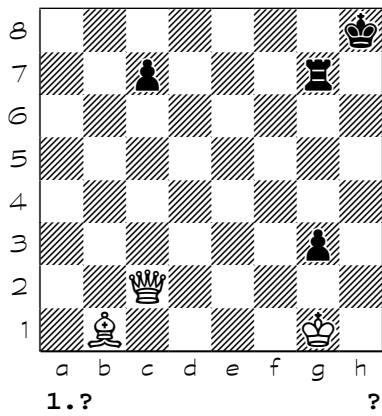
3617



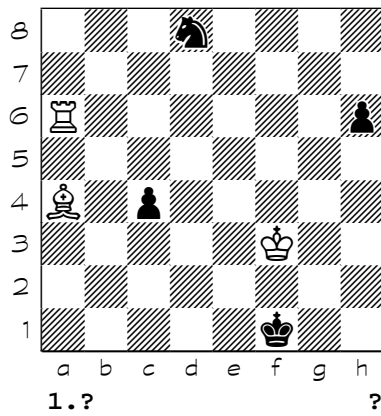
3618



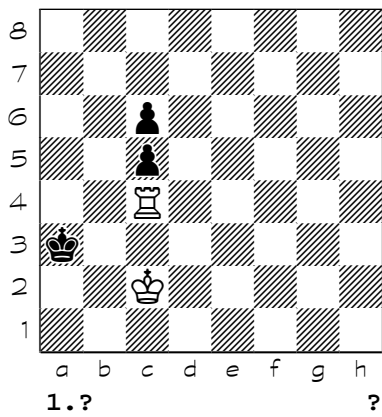
3619



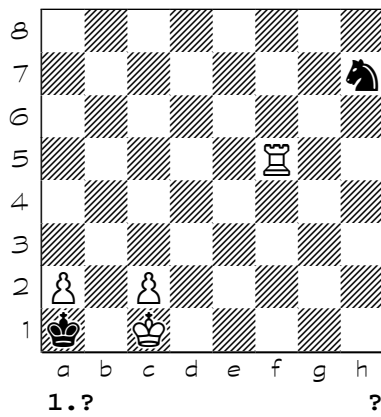
3620



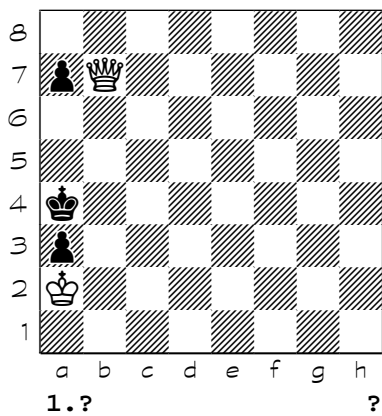
3621



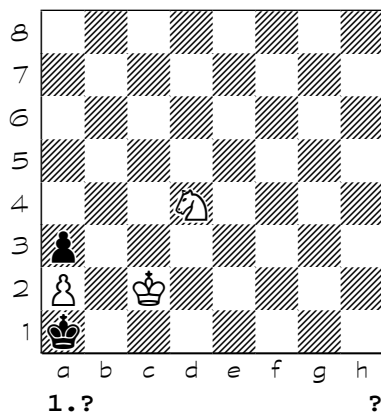
3622



3623

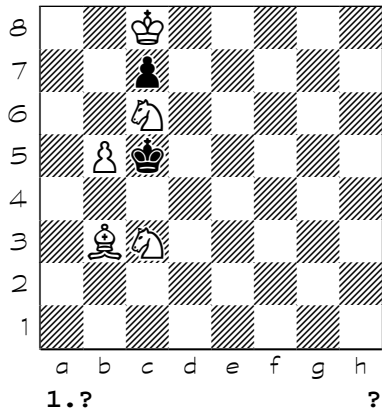


3624

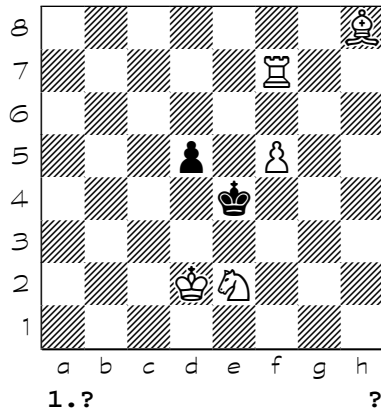


Chess diagrams

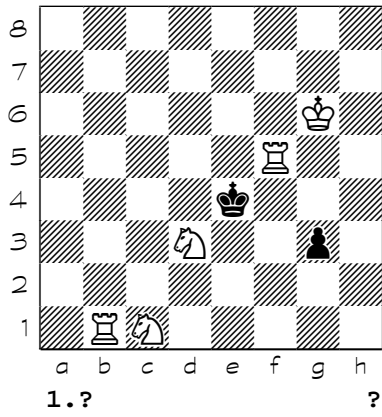
3625



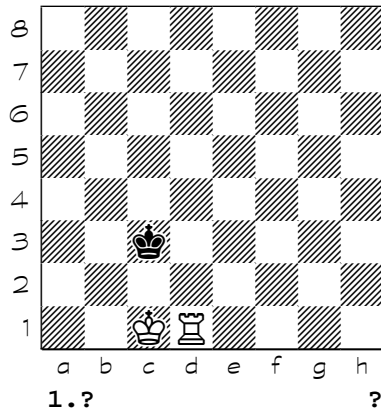
3626



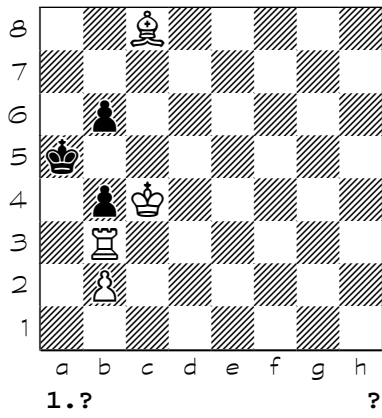
3627



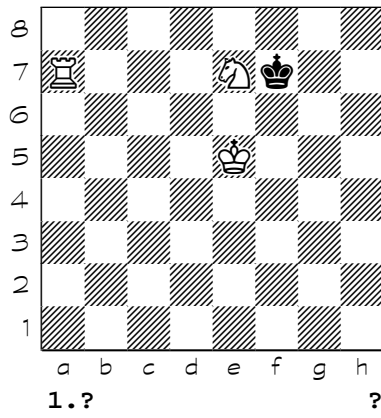
3628



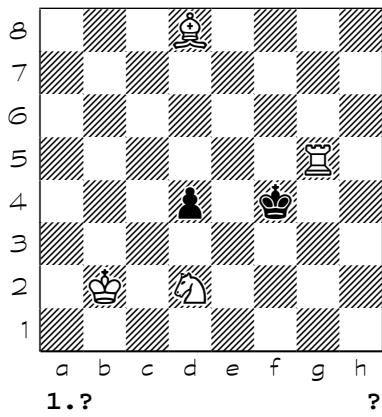
3629



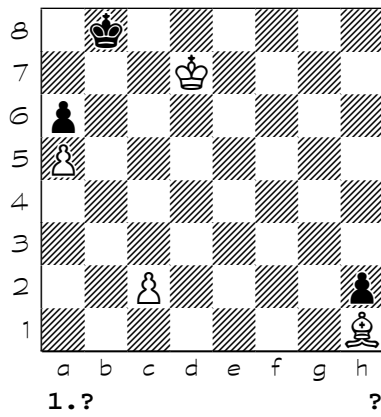
3630



3631

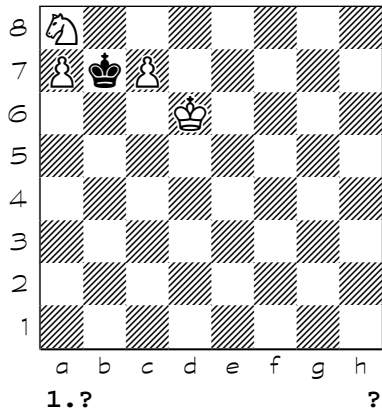


3632

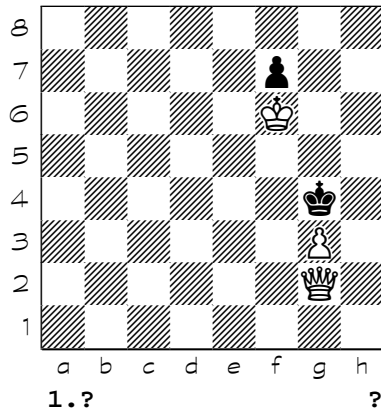


Chess diagrams

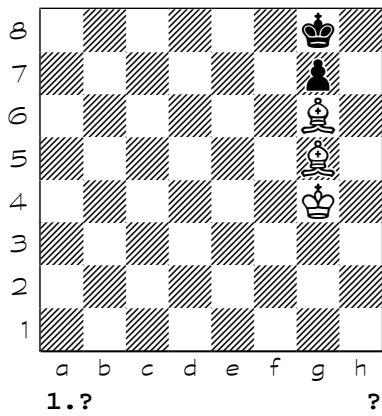
3633



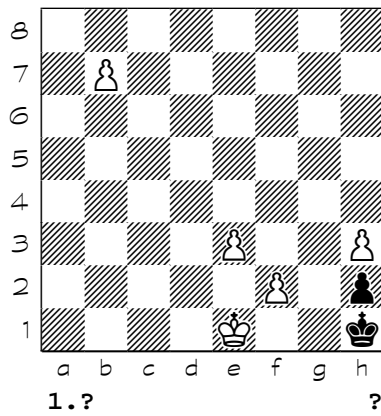
3634



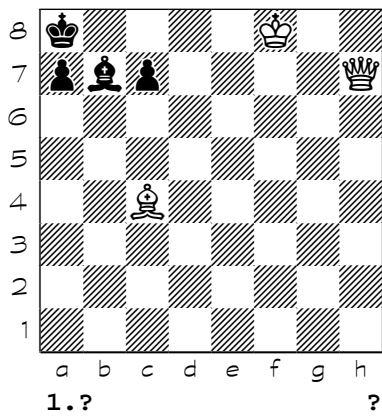
3635



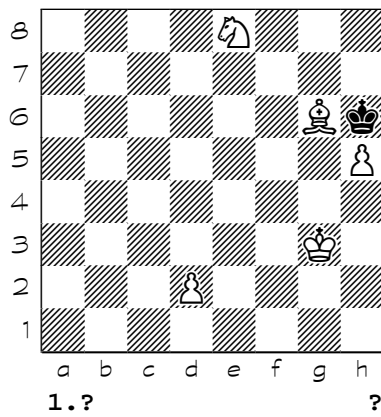
3636



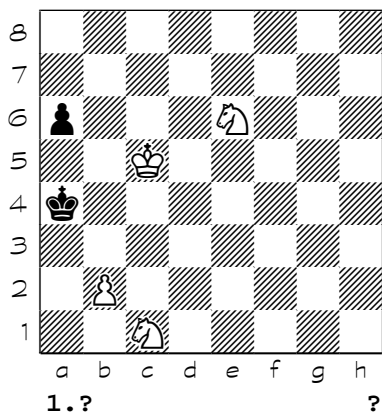
3637



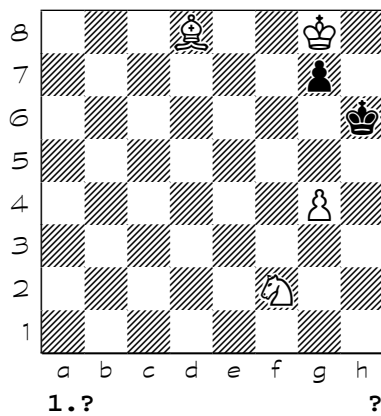
3638



3639

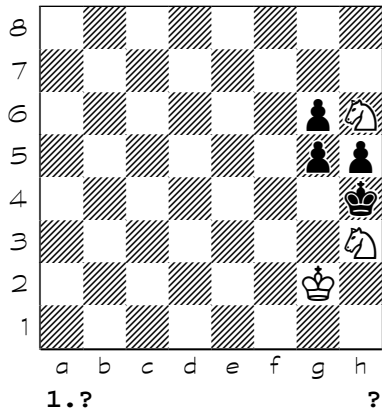


3640

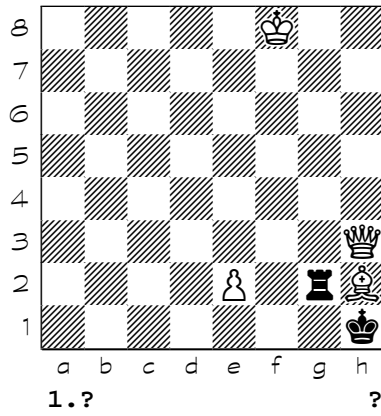


Chess diagrams

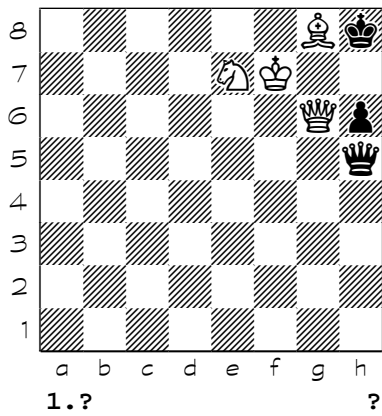
3641



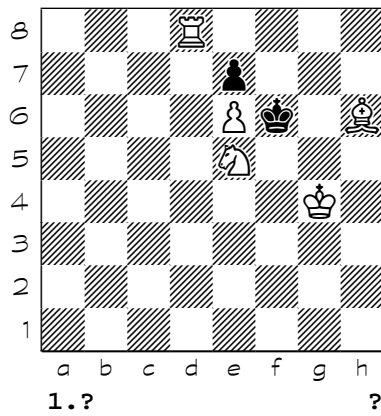
3642



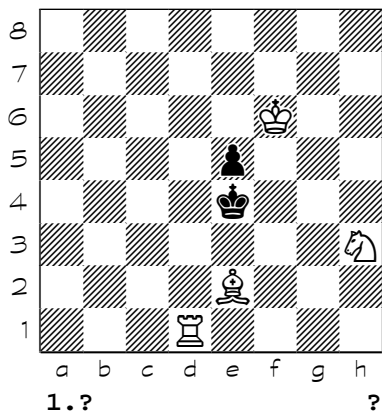
3643



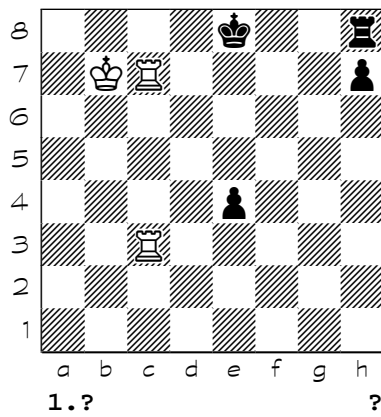
3644



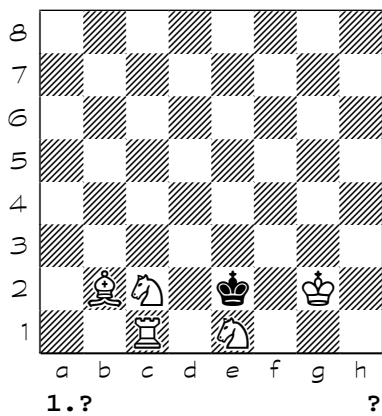
3645



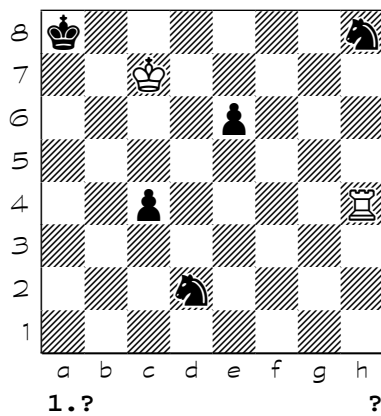
3646



3647

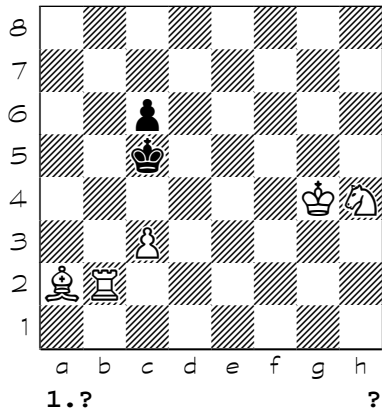


3648

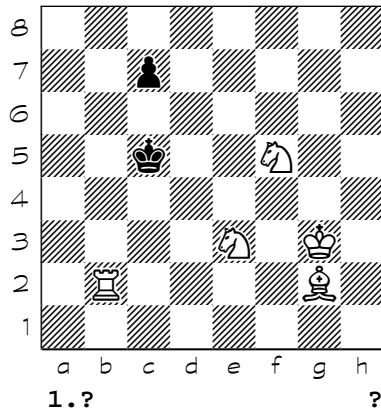


Chess diagrams

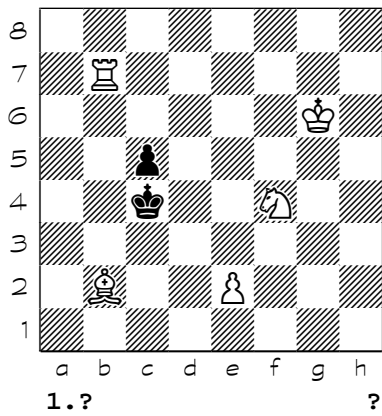
3649



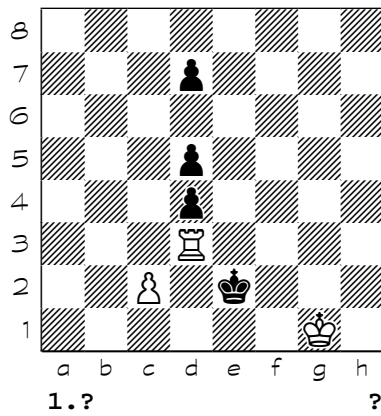
3650



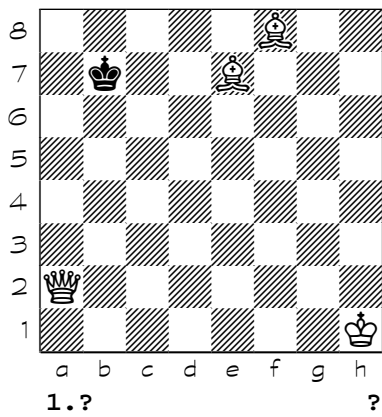
3651



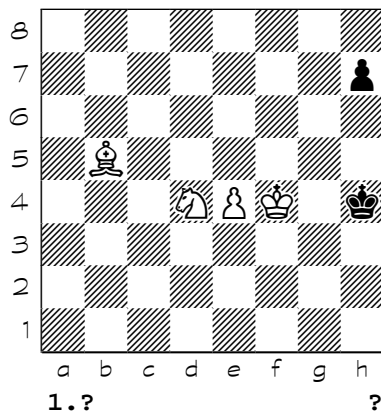
3652



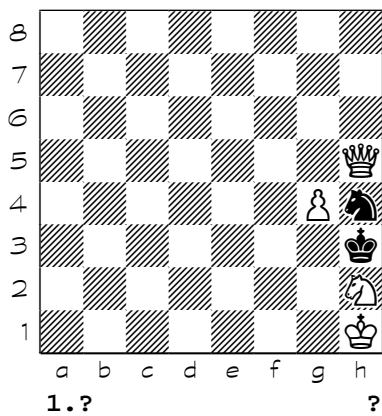
3653



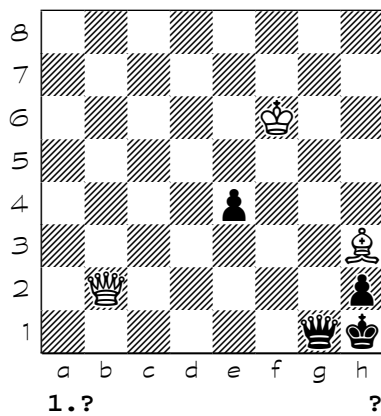
3654



3655

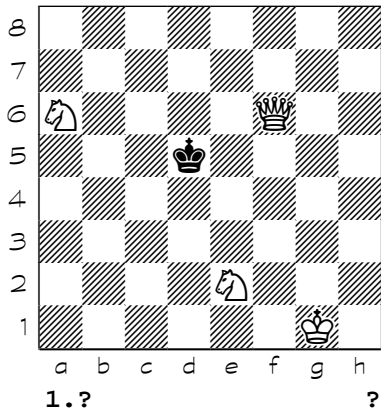


3656

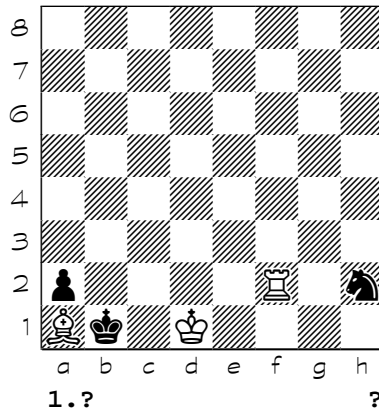


Chess diagrams

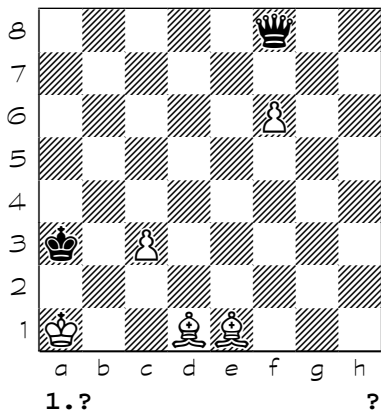
3657



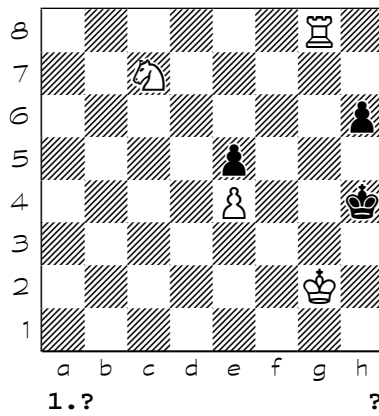
3658



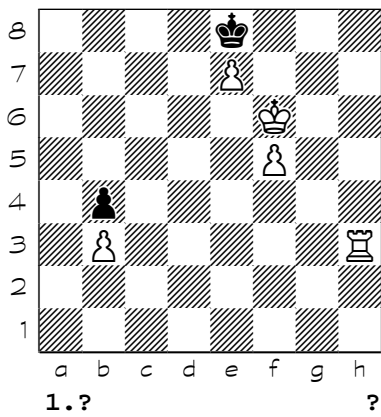
3659



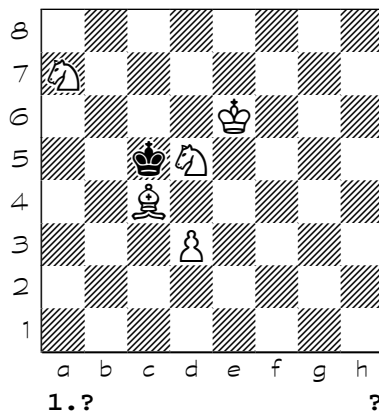
3660



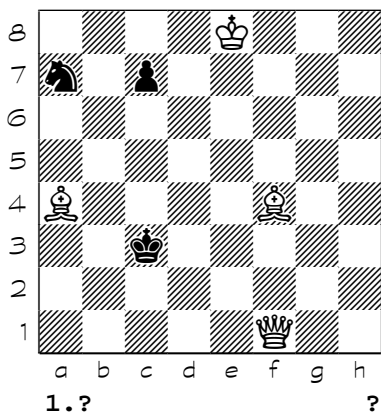
3661



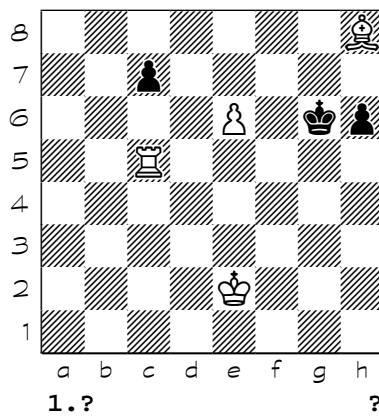
3662



3663

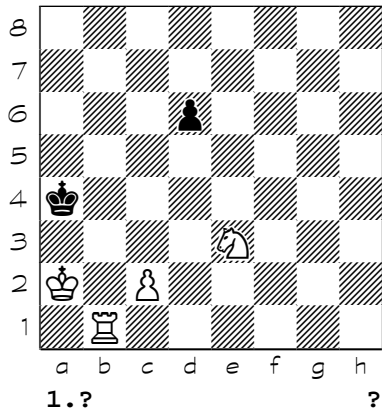


3664

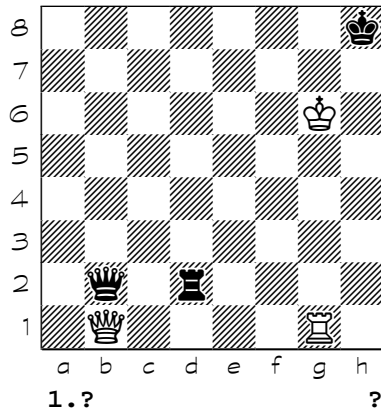


Chess diagrams

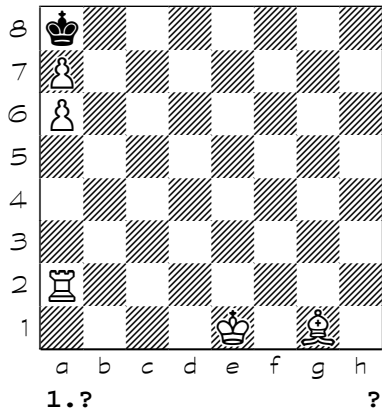
3665



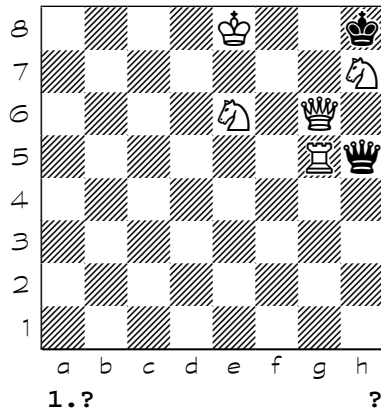
3666



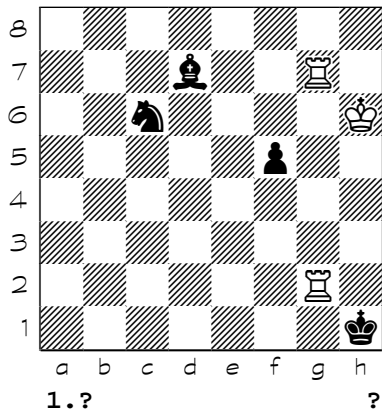
3667



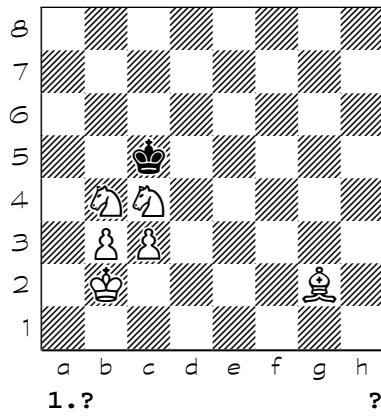
3668



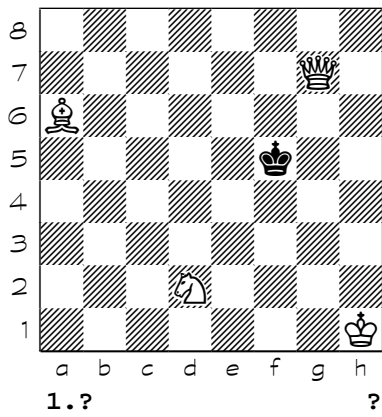
3669



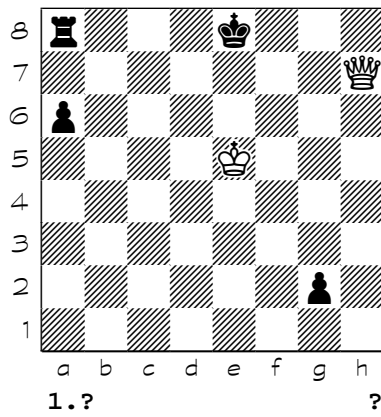
3670



3671

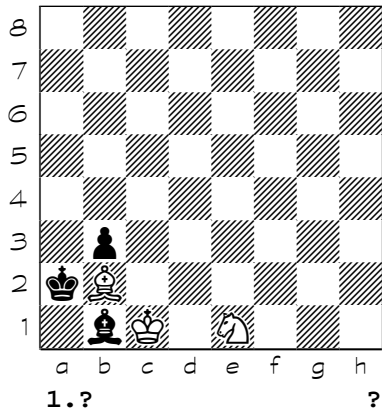


3672

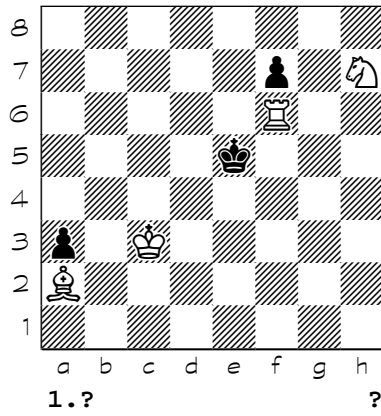


Chess diagrams

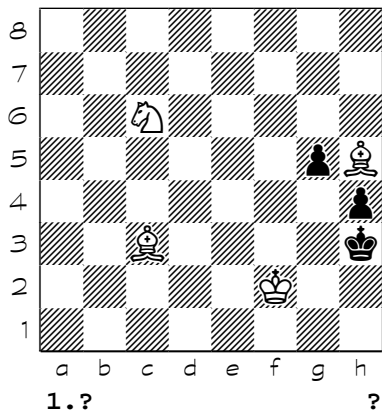
3673



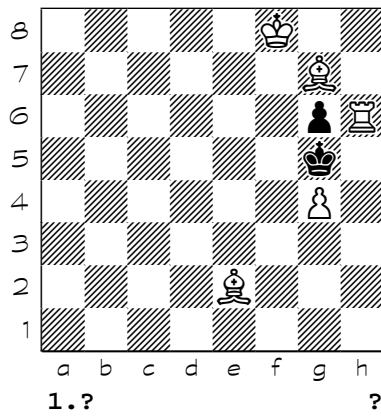
3674



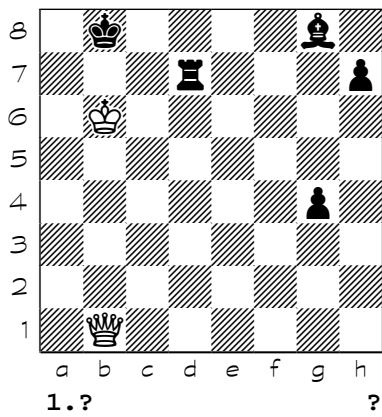
3675



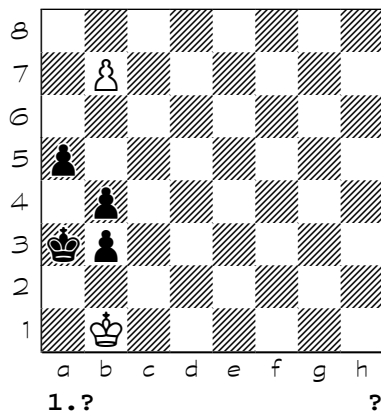
3676



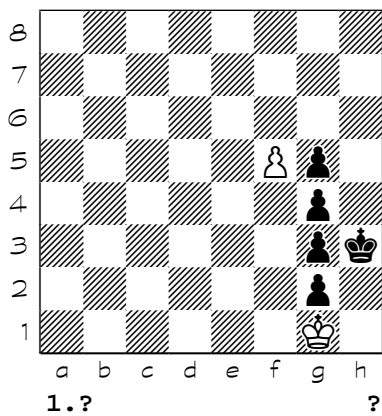
3677



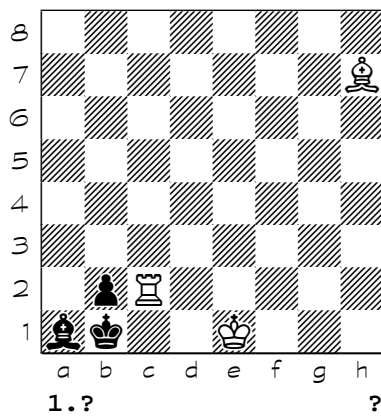
3678



3679

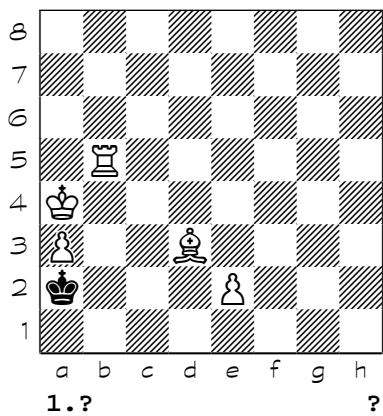


3680

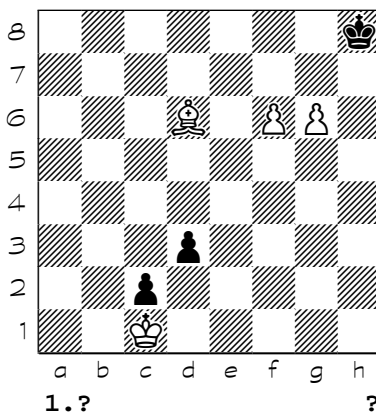


Chess diagrams

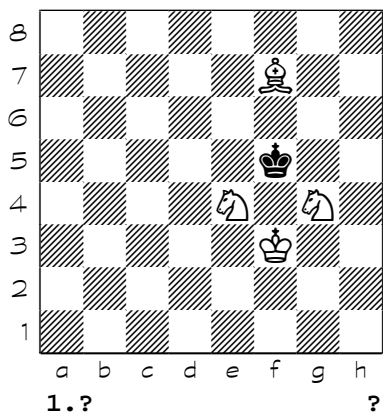
3681



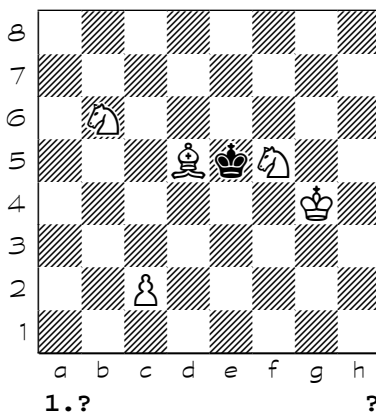
3682



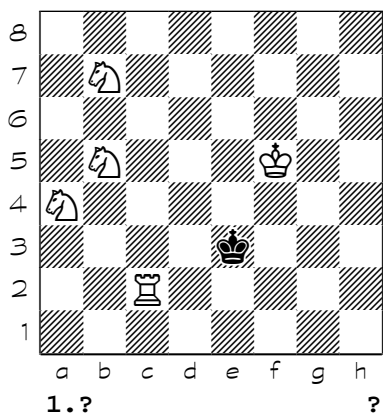
3683



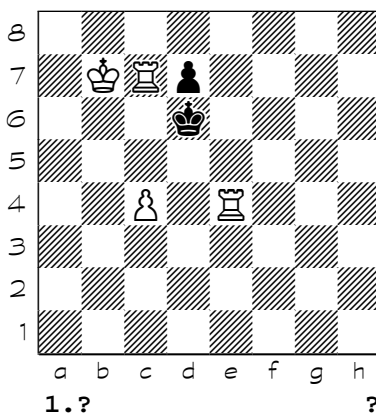
3684



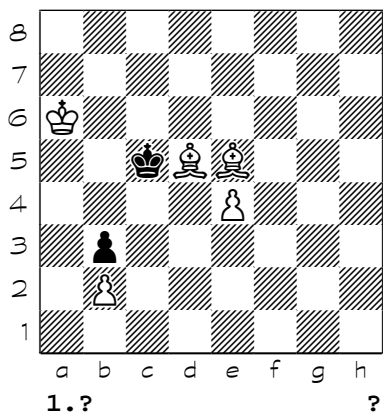
3685



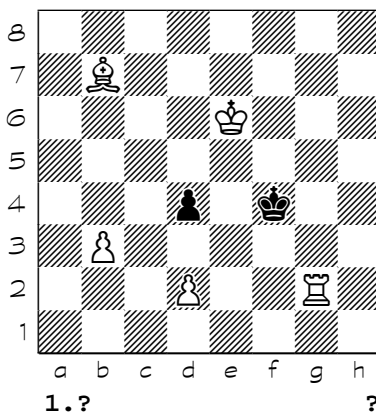
3686



3687

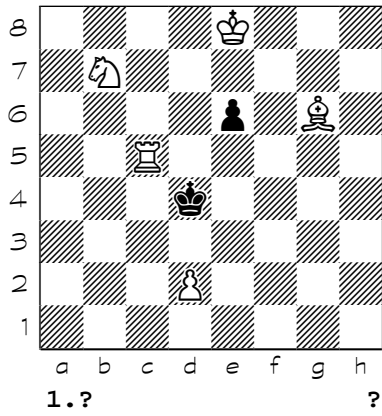


3688

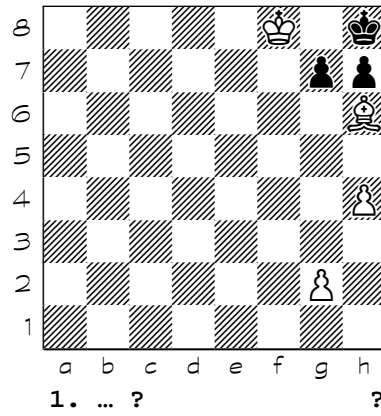


Chess diagrams

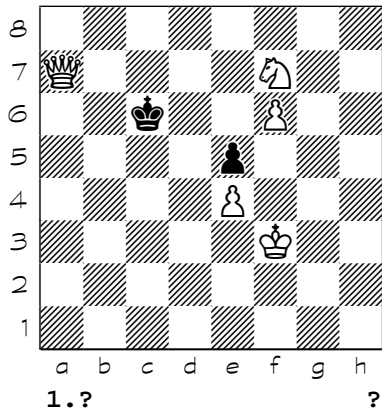
3689



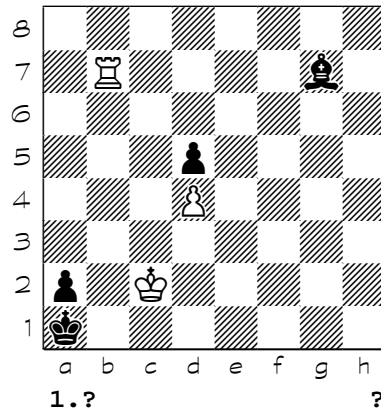
3690



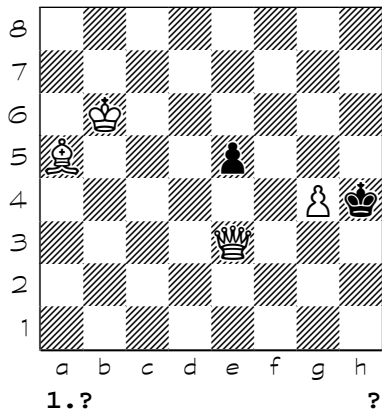
3691



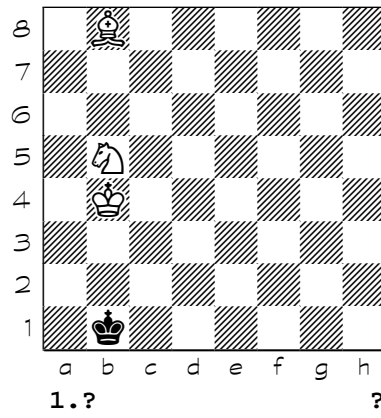
3692



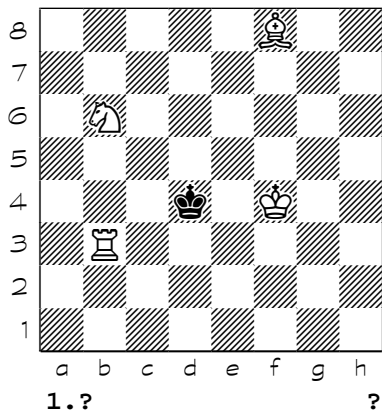
3693



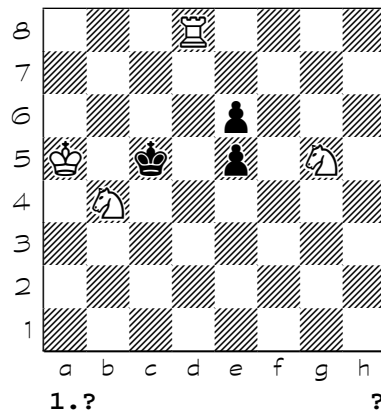
3694



3695

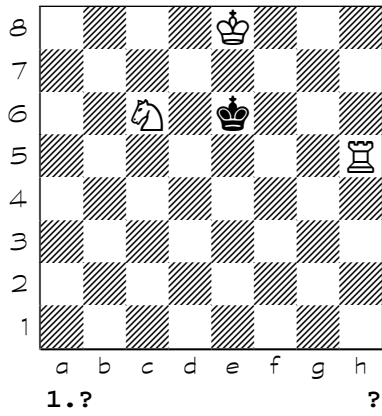


3696

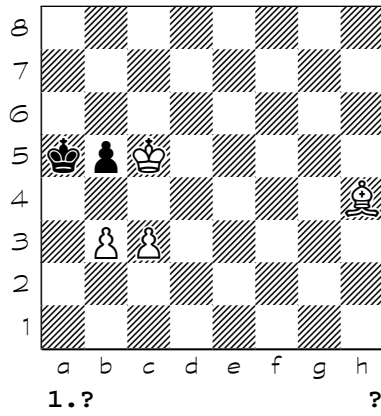


Chess diagrams

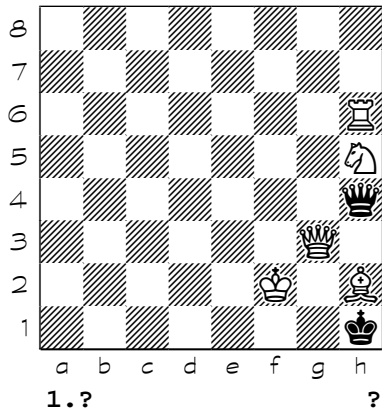
3697



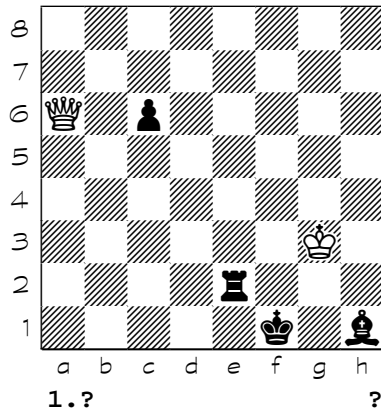
3698



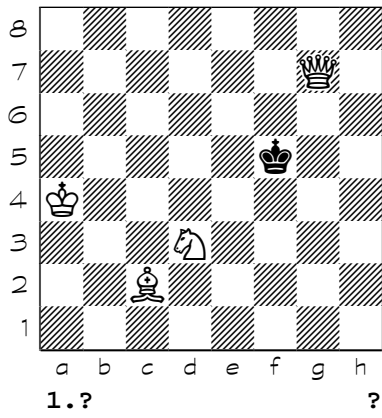
3699



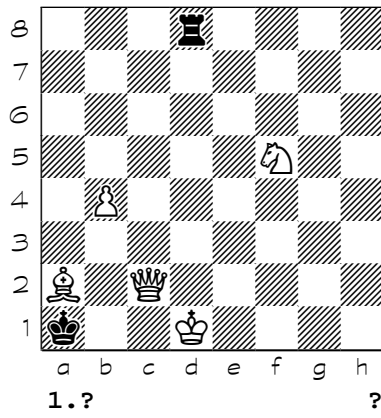
3700



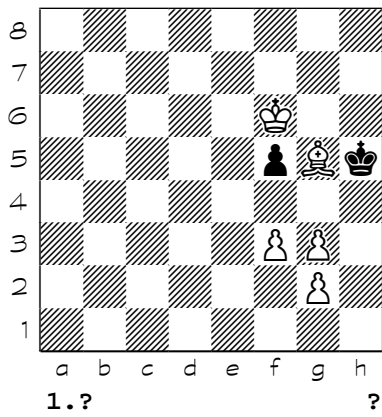
3701



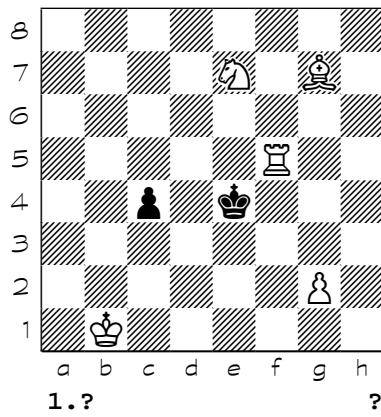
3702



3703

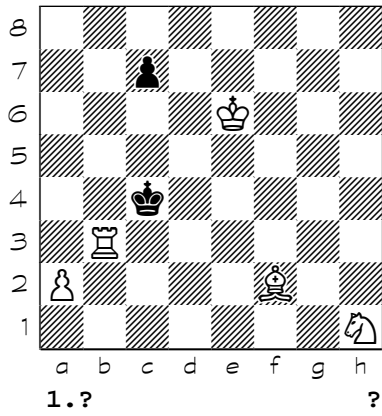


3704

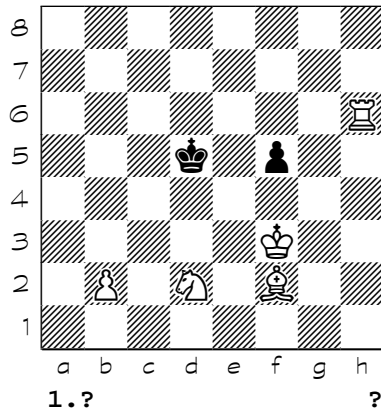


Chess diagrams

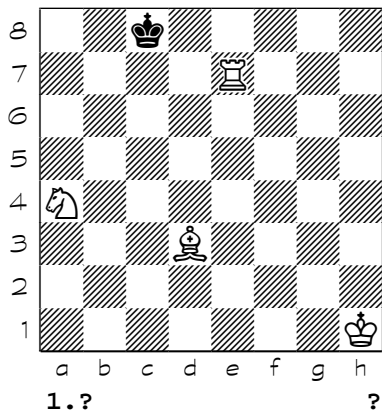
3705



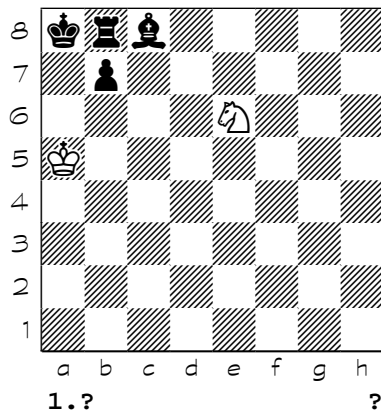
3706



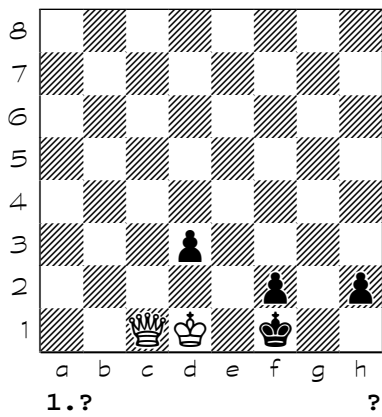
3707



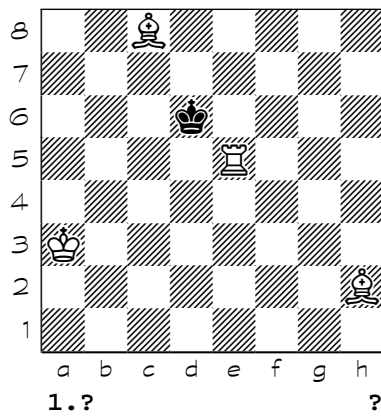
3708



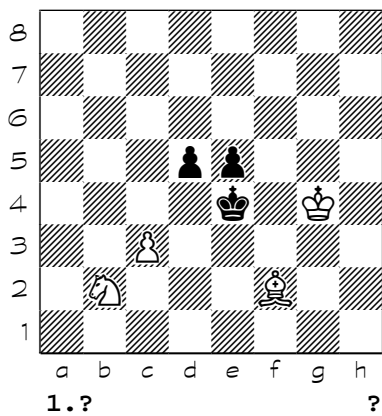
3709



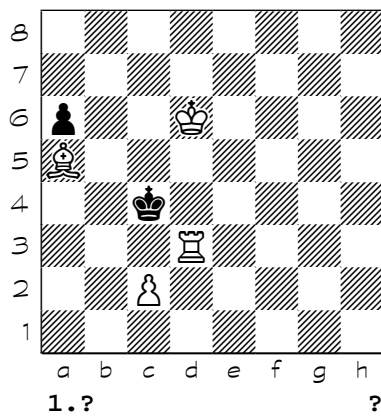
3710



3711

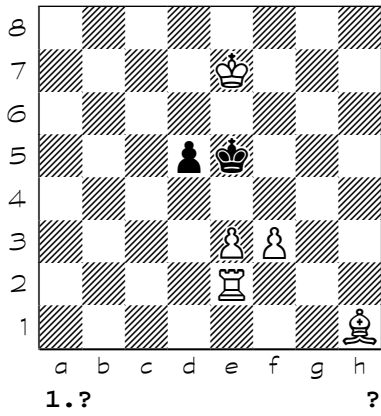


3712

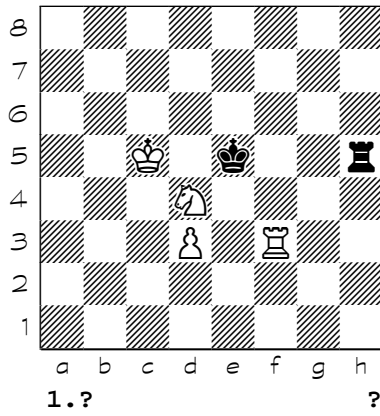


Chess diagrams

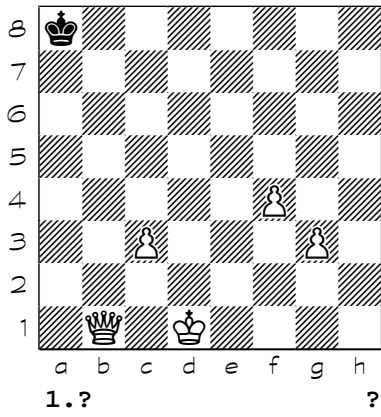
3713



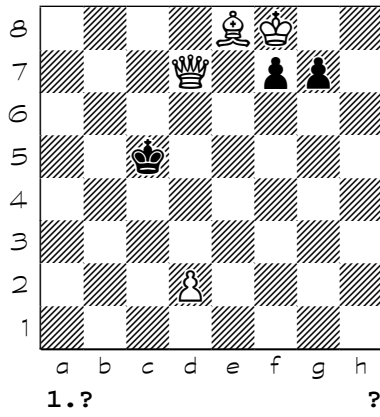
3714



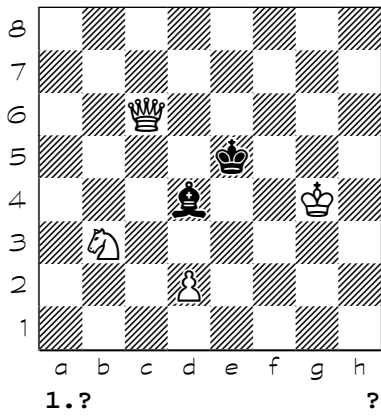
3715



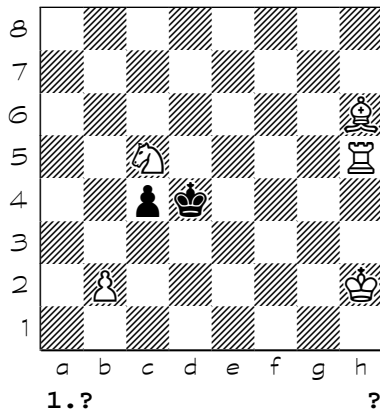
3716



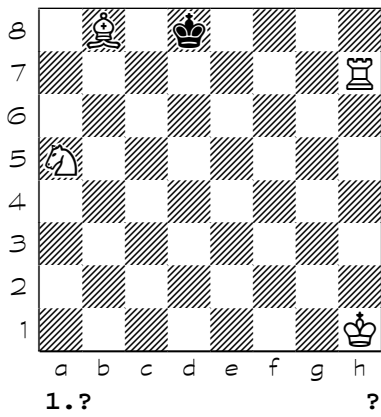
3717



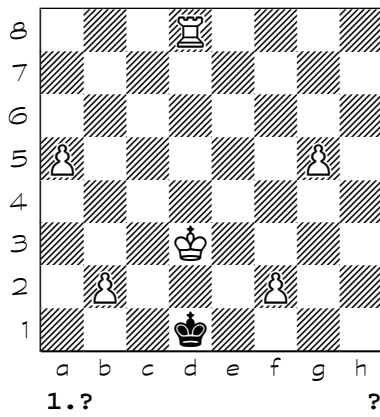
3718



3719

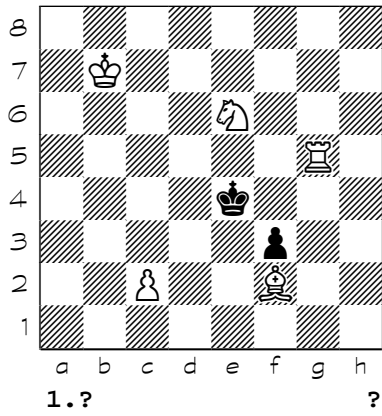


3720

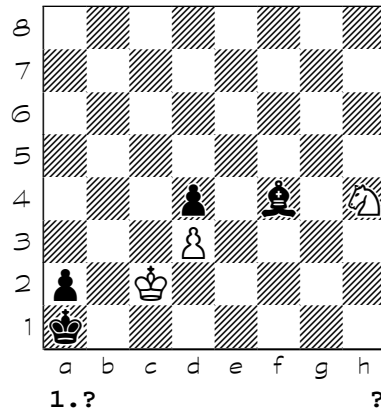


Chess diagrams

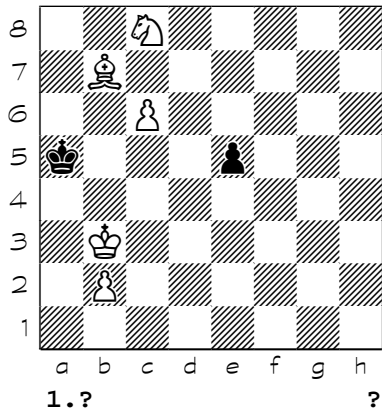
3721



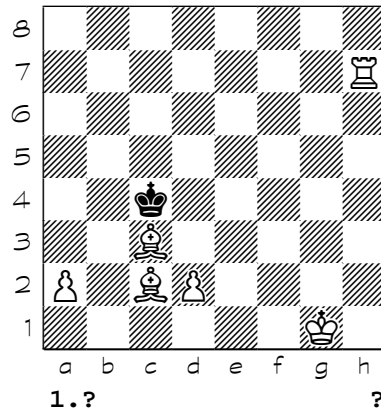
3722



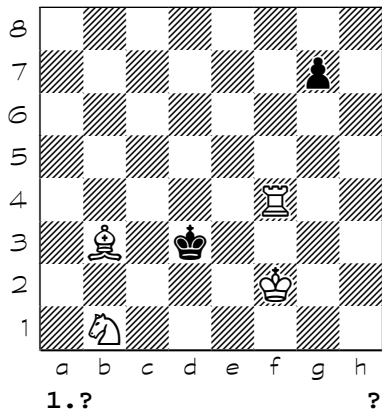
3723



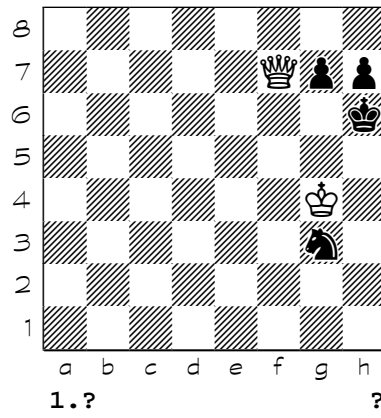
3724



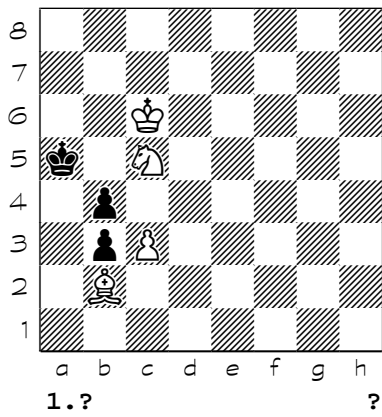
3725



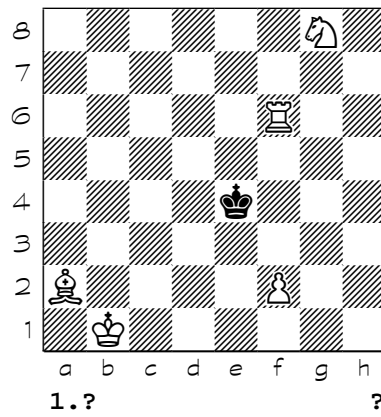
3726



3727

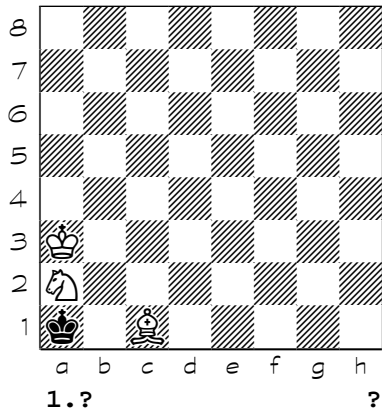


3728

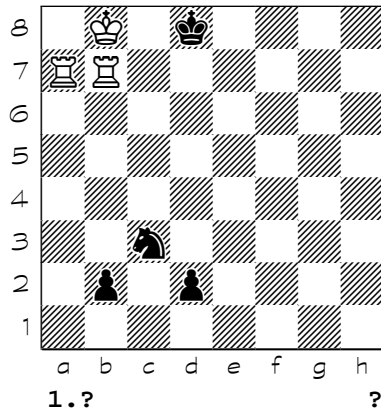


Chess diagrams

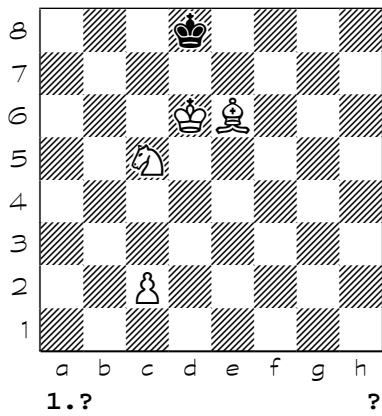
3729



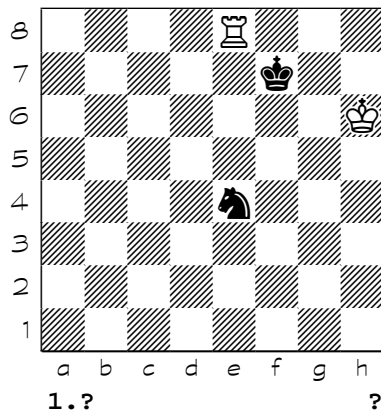
3730



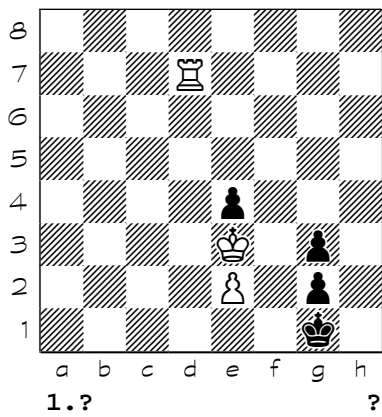
3731



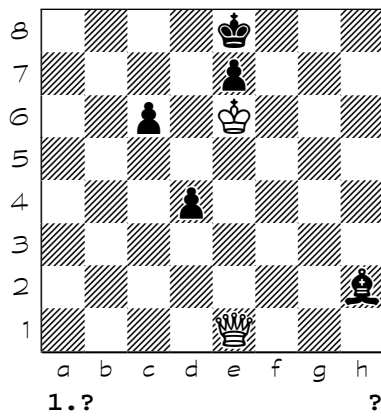
3732



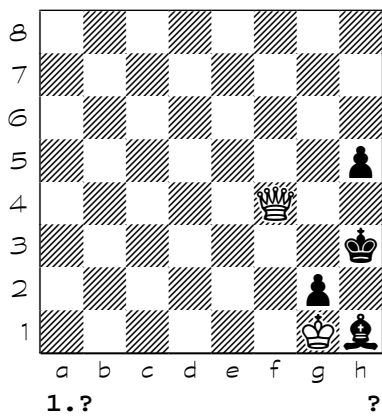
3733



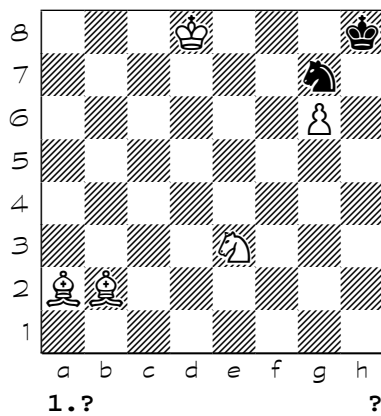
3734



3735

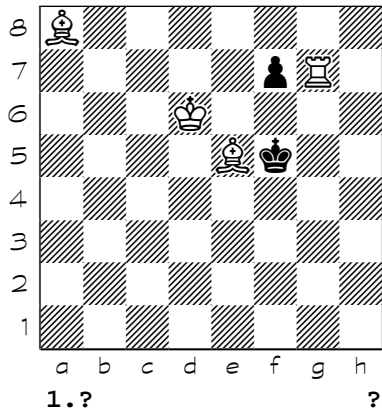


3736

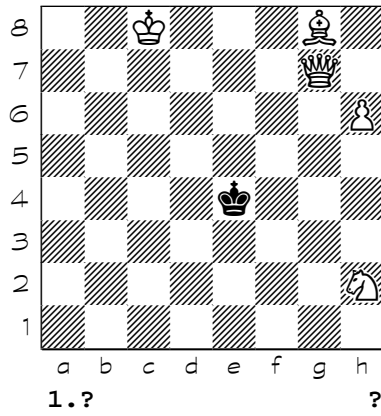


Chess diagrams

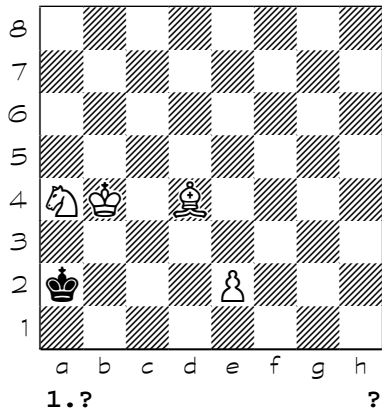
3737



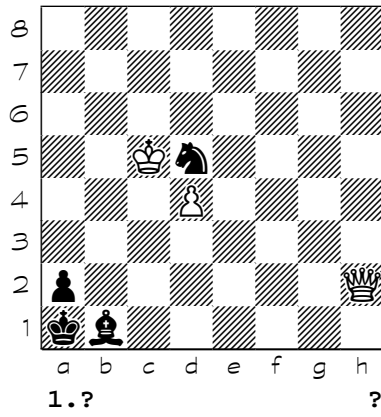
3738



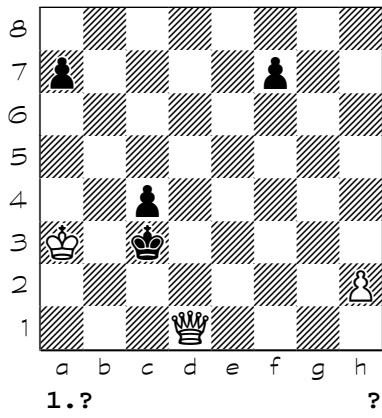
3739



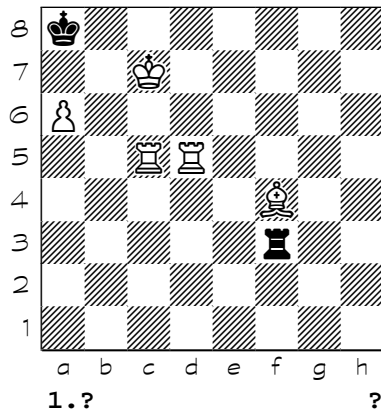
3740



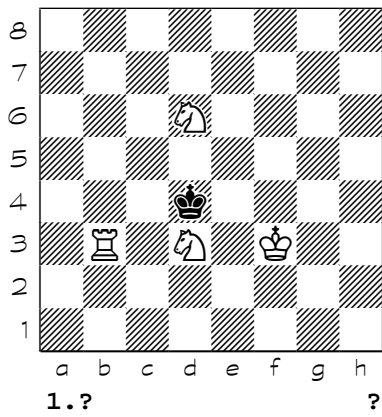
3741



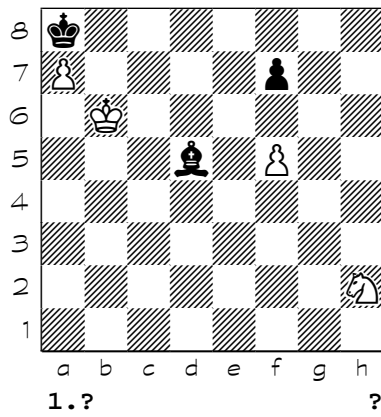
3742



3743

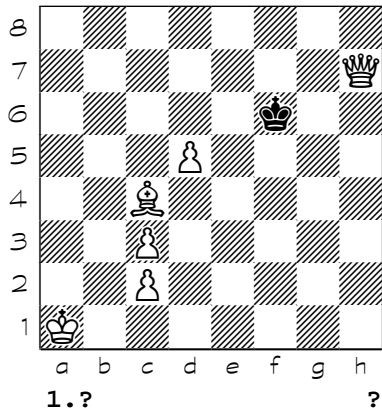


3744

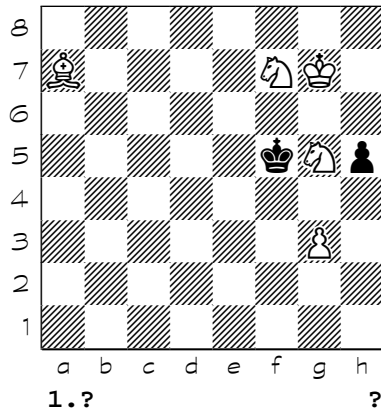


Chess diagrams

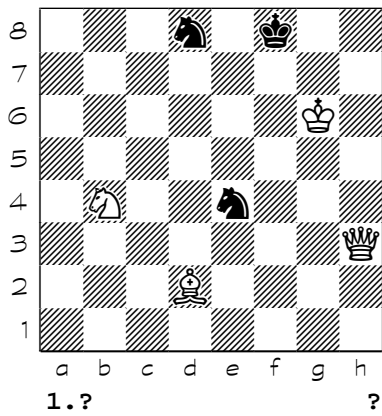
3745



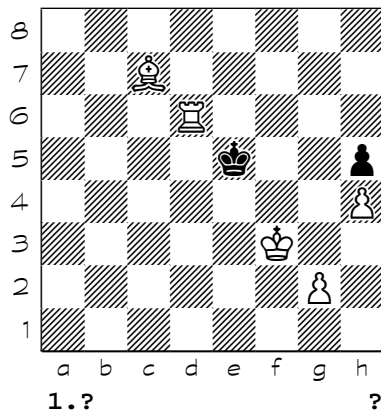
3746



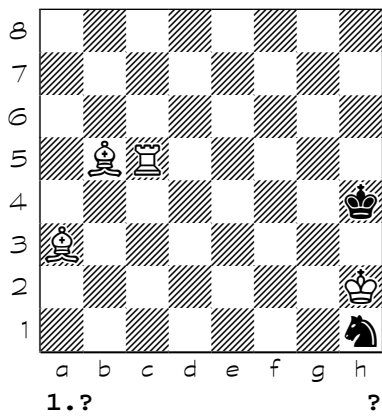
3747



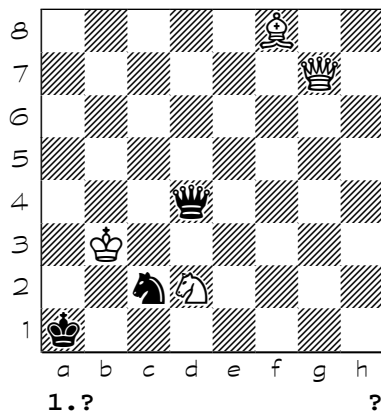
3748



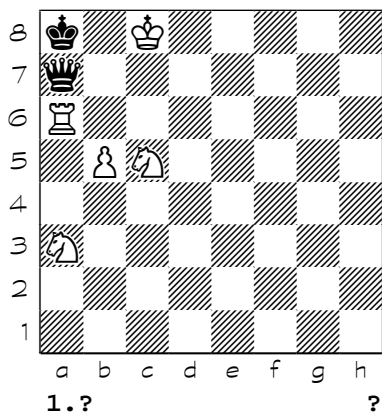
3749



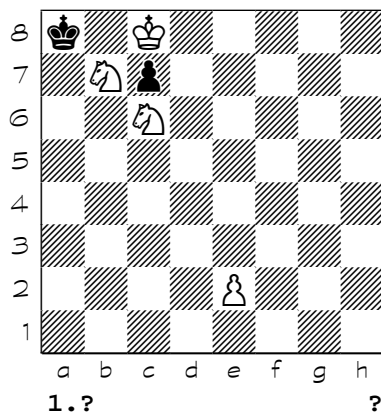
3750



3751

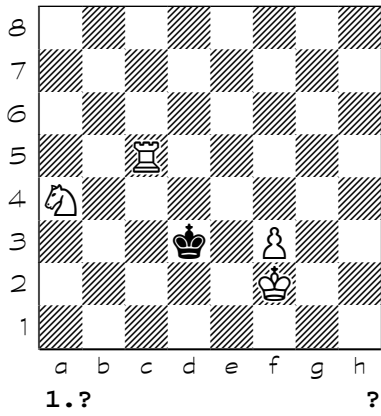


3752

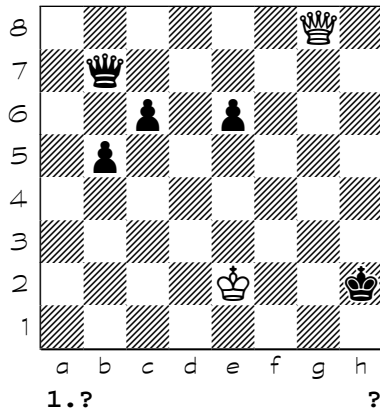


Chess diagrams

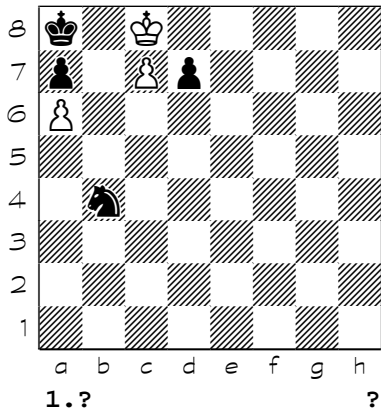
3753



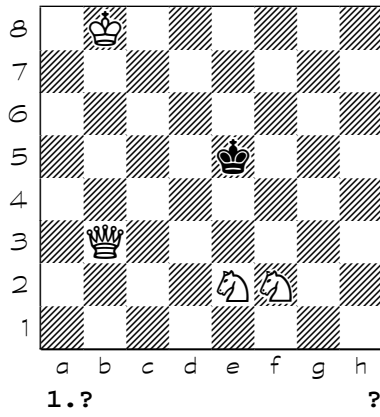
3754



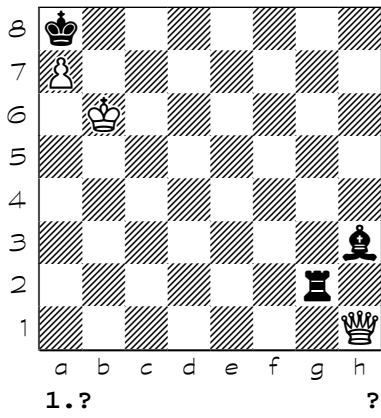
3755



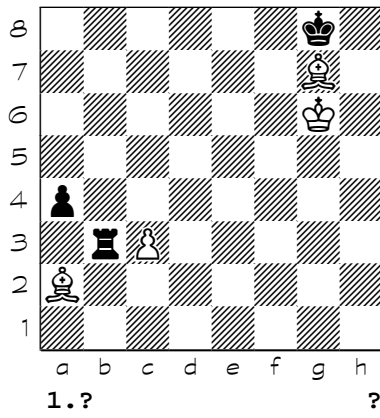
3756



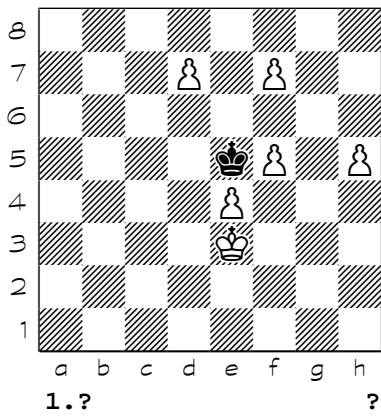
3757



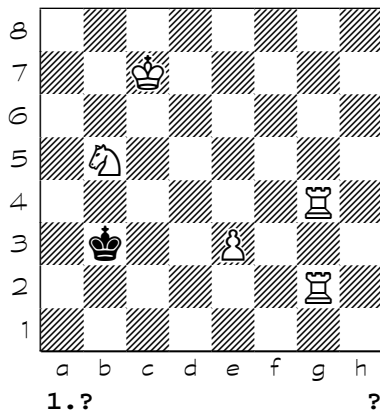
3758



3759

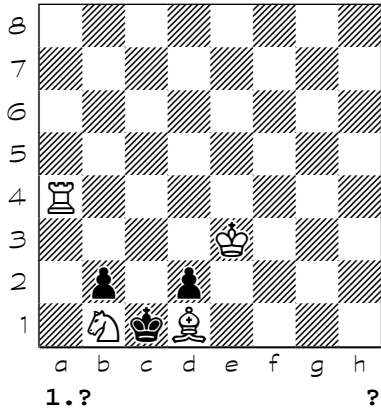


3760

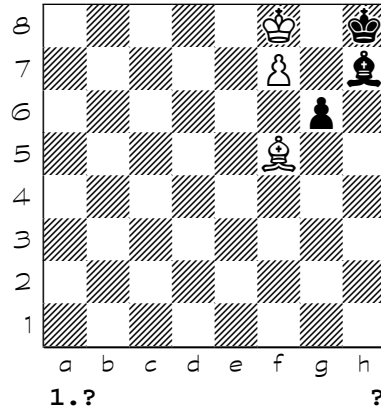


Chess diagrams

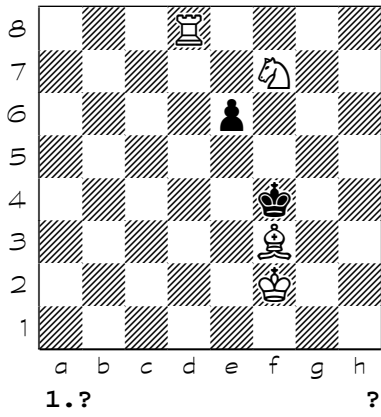
3761



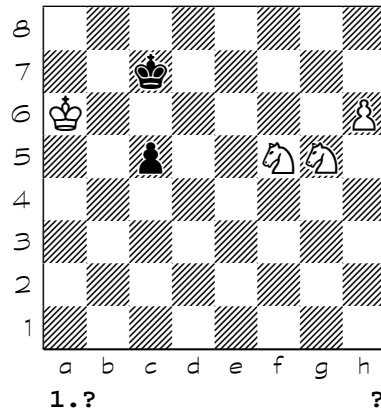
3762



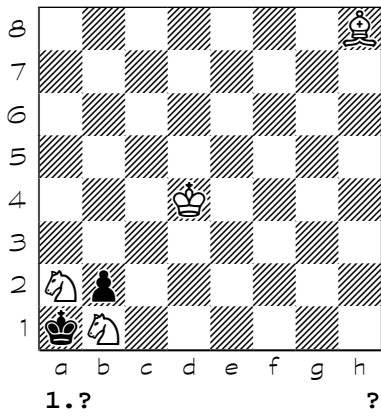
3763



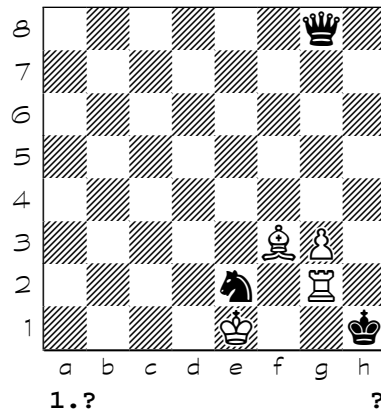
3764



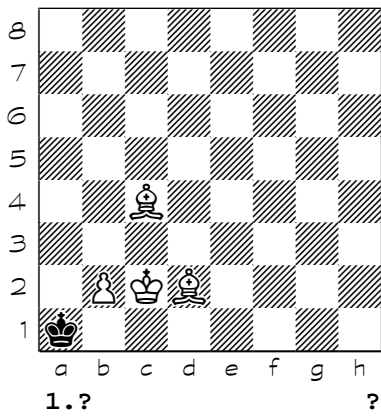
3765



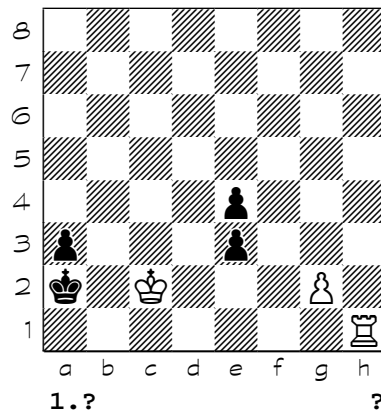
3766



3767

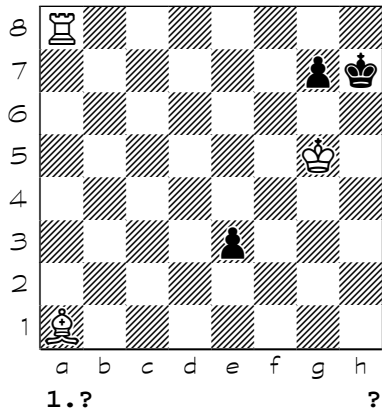


3768

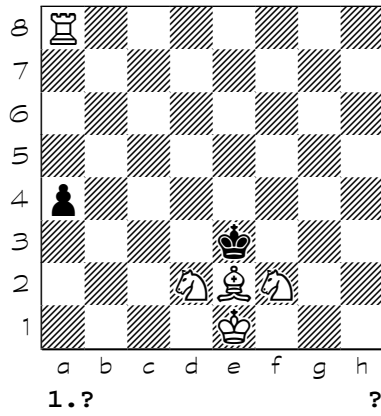


Chess diagrams

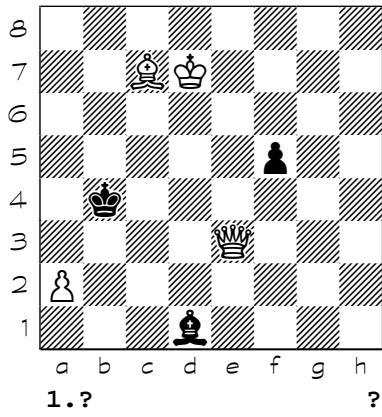
3769



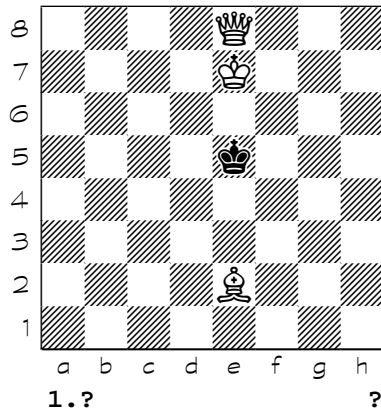
3770



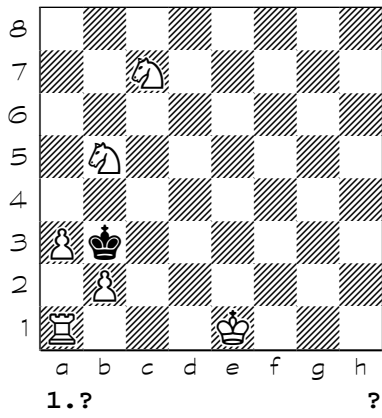
3771



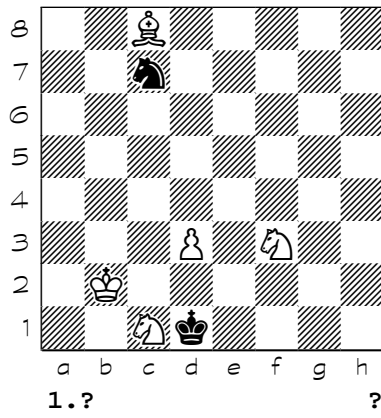
3772



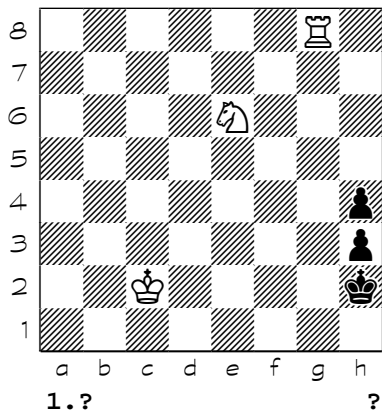
3773



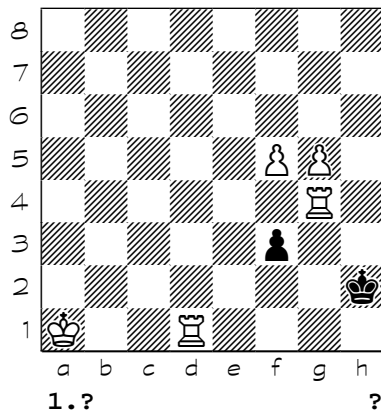
3774



3775

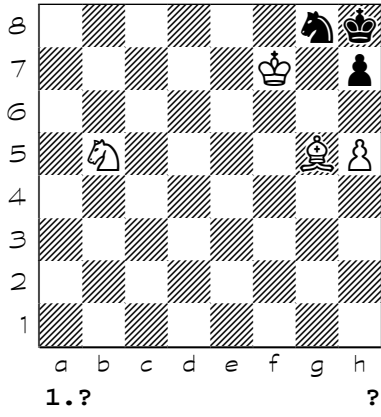


3776

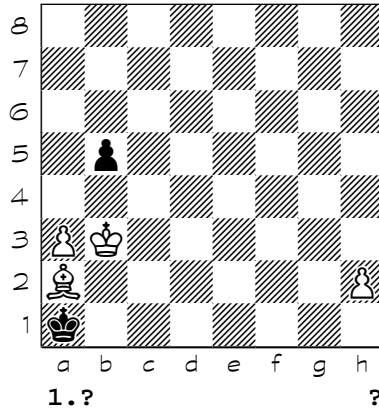


Chess diagrams

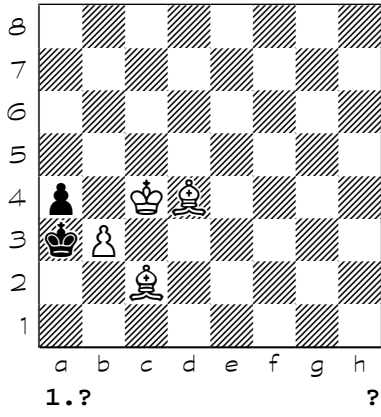
3777



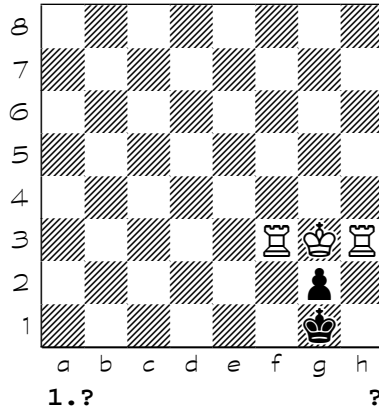
3778



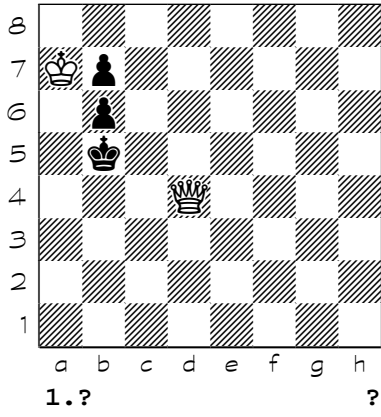
3779



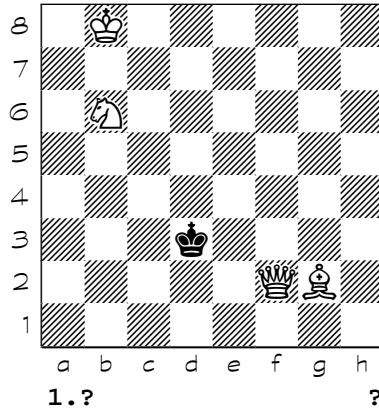
3780



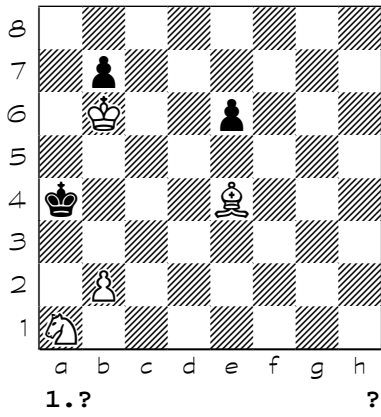
3781



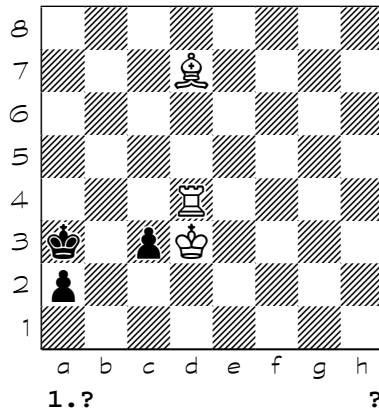
3782



3783

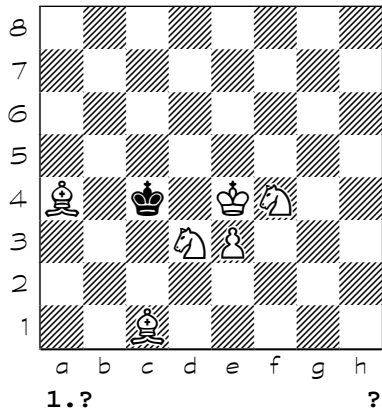


3784

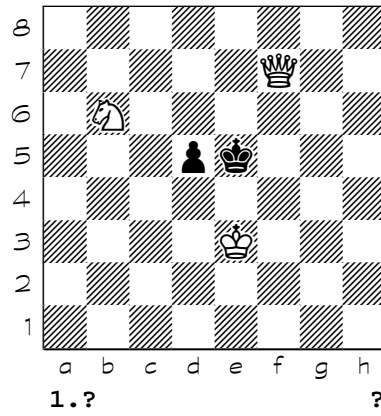


Chess diagrams

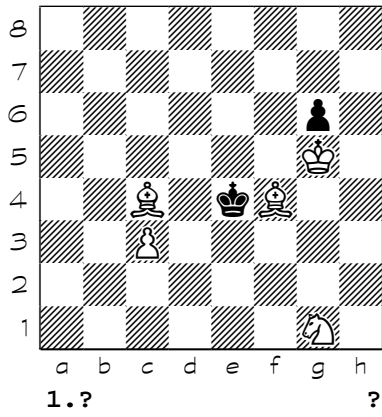
3785



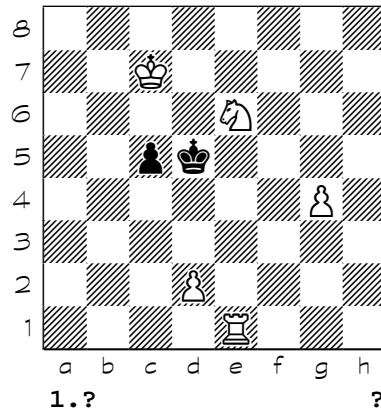
3786



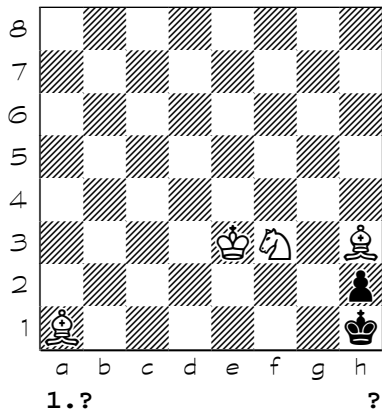
3787



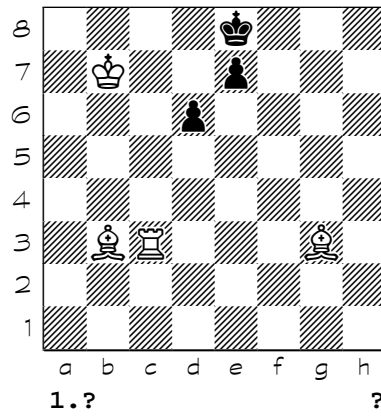
3788



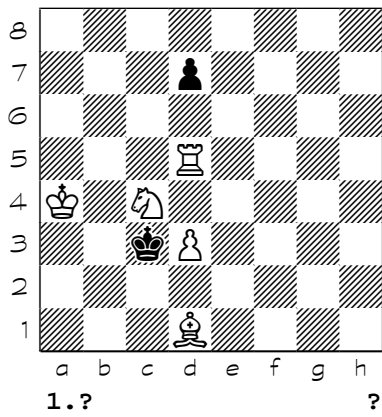
3789



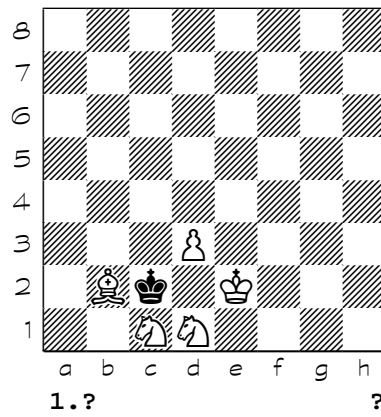
3790



3791

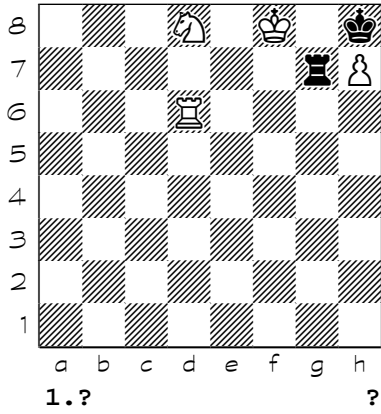


3792

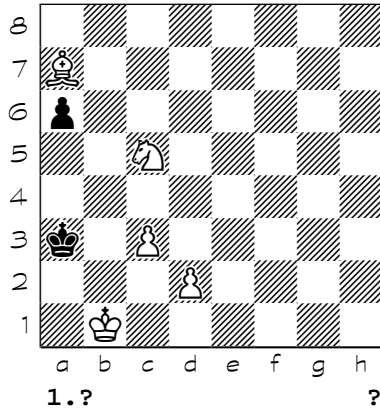


Chess diagrams

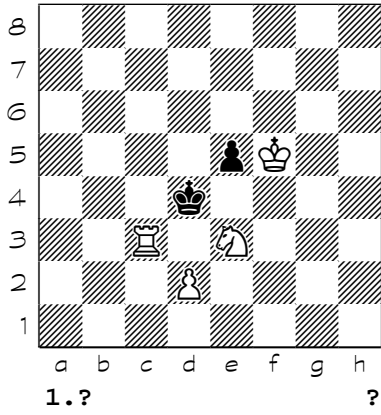
3793



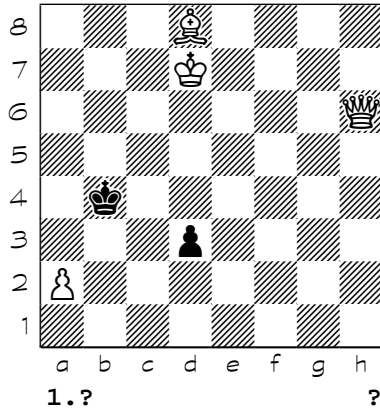
3794



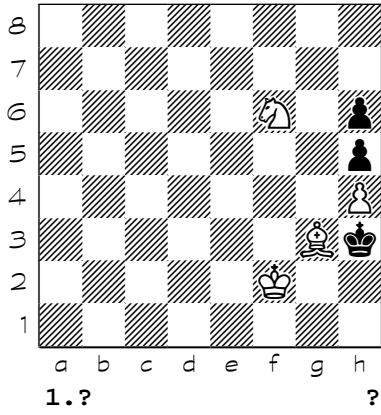
3795



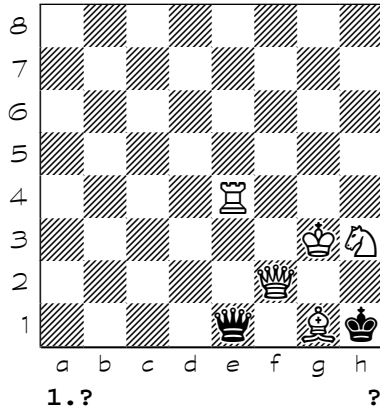
3796



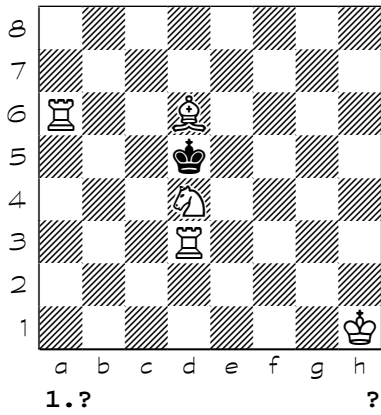
3797



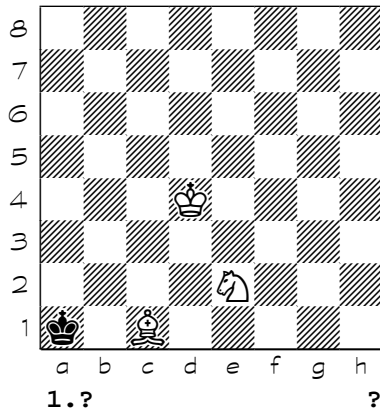
3798



3799



3800



- (3601) 1. Bc6 h1=Q 2. Bxh1 c6 3. Bd5 cxd5 4. c6 d4 5. c7 dxc3 6. c8=R Kb1 7. Rxc3 Ka1 8. Rc1#
- (3602) 1. Nc4 dxc4 (1... Kg2 2. Qd2+ Kh3 3. Ne5 Kh4 4. Qh6#) 2. Qh3 c3 3. Bf4+ Kg1 4. Be3#
- (3603) 1. Bh5 Ke7 2. Rb6 Kd8 3. Rb7 Kc8 4. Bc6 Kd8 5. Be2 Kc8 6. Ba6 Kd8 7. Rd7+ Ke8 8. Bc4 Kf8 9. Rf7+ Kg8 10. Be4 Kh8 11. Rh7#
- (3604) 1. Be2 Bb5 2. Nd3 Bxd3 3. Bh5 Be2 4. Bg6 Bf3 5. Bh7 Bg2 6. Bf5 Bf3 (6... Bh3 7. Bxe4+ Bg2 8. Bxg2#) 7. Bh3 Bg2 8. Bxg2#
- (3605) 1. Kc5 d6+ (1... d5 2. Nb6 d4 3. Kc6 d3 4. Nd7 d2 5. Qd5#) 2. Kc6 d5 3. Ne3 Ke5 4. Kc5 Ke6 (4... e6 5. Ng4#) 5. Qf5#
- (3606) 1. Bxb5 g5 (1... Kh4 2. Qf4 Kh5 3. Be2 g5 4. Qd6 Kh4 5. Qh2#) 2. Be8+ Kh6 3. Qd7 g3 4. Qf7 g4 5. Qg6#
- (3607) {b} up 1 line-a1=a2 c)e3<->e2 4#} 1. Re1 d4 (1... f4 2. Qc3+ Kf5 3. Qh3+ Ke5 4. Qh8+ Kf5 5. Qh5#) 2. Qg3+ Kd5 3. Qb3+ Kc5 4. Rc1+ Bc2 5. Rxc2#
- (3608) 1. Kc2 Nb2 (1... Nc3 2. Bh2 Na4 3. Be5+ Nc3 4. Bxc3#) 2. e4 Nd1 3. Bd4+ Nb2 4. Bxb2#
- (3609) 1. Ra3 a4 2. Rd4 Kc1 (2... Kc2 3. Nb4+ Kc1 4. Rc3+ Kb1 5. Rd1#) 3. Rc3+ Kb1 4. Rd1+ Ka2 5. Nb4#
- (3610) 1. Kg5 Kf7 2. Rxd6 Kg7 3. Rd7+ Kf8 4. Kg6 Ke8 5. Rd8#
- (3611) 1. Kf2 g4 2. Qb1 g3+ 3. Kxg3 Kg1 4. Qb6+ Kh1 5. Qf2 Ne3 (5... Nf3 6. Qxg2#) 6. Qxh2#
- (3612) 1. Qg3+ Kh5 (1... Kh6 2. f4 Rh8 3. Qg5+ Kh7 4. f5 Nf6 5. Qg6#) 2. Qg4+ Kh6 3. f4 Rg7 4. Qh4+ Kg6 5. f5#
- (3613) 1. Bh2 Kxh2 2. Kh4 Kh1 3. Kg3 Kg1 4. Qa1#
- (3614) 1. Bg4 Kg2 2. a7 Kg1 (2... Kh1 3. a8=Q+ Kg1 4. Ne3 Kxh2 5. Qg2#) 3. a8=R Kg2 4. Rg8 Kg1 5. Bf3#
- (3615) 1. Bd8 Ke4 (1... Ke5 2. Bd3 Kd4 3. Be7 Ke5 4. Bf6#) 2. Bf6 Kf5 3. Kg2 Ke4 4. Bd3#
- (3616) 1. Rb4 Ka7 2. Rb6 Bc4 3. Rxb7+ Ka8 4. Nb6#
- (3617) {a-c} Ea8-d1-g8} 1. Nc7 Ka1 2. Na6 Ka2 3. Nb4+ Ka1 4. Kc1 h5 5. Nc2+ Ka2 6. Nd4 Ka1 7. Kc2 Ka2 8. Ne2 Ka1 9. Nc1 a2 10. Nb3#
- (3618) {a} f2-e3 c) b7-g2} 1. Nd8 Ke4 2. Ne6 Kd5 3. Ng7 Ke4 4. Nh5 Kd5 5. Nf6#
- (3619) {b}c7-d7} 1. Qf5 Kg8 2. Ba2+ Kh8 3. Qe5 c5 4. Qe8+ Kh7 5. Qh5#
- (3620) 1. Bc6 Ke1 (1... Kg1 2. Kg3 Kf1 3. Bf3 Ke1 4. Rd6 Nb7 5. Rd1#) 2. Ke3 Kd1 3. Be4 Kc1 4. Rb6 h5 5. Rb1#
- (3621) 1. Kc3 Ka2 2. Rxc5 Kb1 (2... Ka1 3. Kc2 Ka2 4. Ra5#) 3. Kb3 Ka1 4. Rc1#
- (3622) 1. c3 Nf6 2. Rxf6 Kxa2 3. Kc2 Ka3 4. Ra6#
- (3623) {aeie} 1. Qb8 Ka5 2. Kb3 a2 3. Kc4 a6 4. Qb4#
- (3624) {aeie} 1. Nc6 Kxa2 2. Nb4+ Ka1 3. Kc1 a2 4. Nc2#
- (3625) 1. Ne4+ Kb6 2. Kb8 Kxb5 3. Kxc7 Ka6 4. Bc4#
- (3626) 1. Nd4 Kf4 2. Rg7 Ke5 3. Rg6+ Kf4 4. Rg8 ({aeoaeue} 4. Rg2 Ke4 5. Rg4#) 4... Ke4 5. Rg4#
- (3627) 1. Nb2 Ke3 (1... g2 2. Nb3 g1=Q+ 3. Rxc1 Ke3 4. Re1#) (1... Kd4 2. Nd1 Kc4 3. Rfb5 g2 4. R1b4#) 2. Nb3 Ke2 3. Rff1 g2 4. Rbe1#
- (3628) 1. Rd2 Kb4 2. Rc2 Kb3 3. Kb1 Kb4 4. Ka2 Kb5 5. Kb3 Ka5 6. Kc4 Kb6 7. Kb4 Ka6 8. Kc5 Kb7 9. Kb5 Ka7 10. Kc6 Kb8 11. Ra2 Kc8 12. Ra8#
- (3629) {2 SOL.} 1. Ra3+ (1. Rxb4 b5+ 2. Rxb5+ Ka4 3. Rb6 Ka5 4. Ra6#) 1... bxa3 2. b4+ Ka4 3. Bd7+ b5+ 4. Bxb5#
- (3630) 1. Nd5+ Kg6 (1... Ke8 2. Kf6 Kd8 3. Nb6 Ke8 4. Ra8#) 2. Kf4 Kh6 3. Kf5 Kh5 4. Rh7#
- (3631) 1. Kc2 Ke3 (1... d3+ 2. Kd1 Ke3 3. Rg4 Kf2 4. Bb6#) 2. Rg4 d3+ 3. Kd1 Kf2 4. Bb6#
- (3632) 1. c3 Ka7 2. c4 Kb8 3. c5 Ka7 4. c6 Ka8 5. c7+ Ka7 6. Kc6 Ka8 {iioaeieiaia daiiaa} 7. Kb6#
- (3633) 1. c8=Q+ Kxc8 2. Nc7 Kb7 3. a8=Q+ Kb6 4. Qa6#
- (3634) 1. Qf2 ({iia.dao.} 1. Kxf7 Kf5 2. Qe2 Kg5 3. Qe4 Kh5 4. Qg6#) 1... Kh3 2. Qg1 Kg4 3. Qg2 Kh5 4. Qh3#
- (3635) *
- (3636) 1. b8=Q Kg2 2. Qg8+ Kh1 3. Qc4 Kg2 4. Qf1+ Kf3 5. Qh1#
- (3637) 1. Ba6 Bxa6 (1... Bc8 2. Qe4+ Kb8 3. Qe8 c5 4. Qxc8#) 2. Qxc7 Bb7 3. Qd8+ Bc8 4. Qxc8#
- (3638) {b} d2-c2} 1. d4 Kg5 2. d5 Kh6 3. d6 Kg5 4. d7 Kh6 5. d8=N Kg5 6. Nf7#
- (3639) 1. Nd4 a5 2. Kd5 Kb4 3. Nd3+ Ka4 4. Ne1 Kb4 5. Nec2+ Ka4 6. b3#

(3640) 1. Nd3 g6 2. Bf6 g5 3. Bg7+ Kg6 4. Ne5#
(3641) 1. Ng1 g4 2. Nf7 g3 3. Kf3 g2 4. Kf4 g5+ 5. Kf3 g4+ 6. Kf4 g3 7. Nf3+ Kh3 8. N7g5#
(3642) 1. Bd6+ Kg1 2. Bc5+ Rf2+ 3. Qf3 Kh2 4. Qxf2+ Kh3 5. Be7 Kg4 6. Qf3#
(3643) 1. Kf8 Qf3+ 2. Bf7 Qa8+ 3. Be8 Qf3+ 4. Qf7 Qxf7+ 5. Bxf7 Kh7 6. Bg8+ Kh8 7. Ng6#
(3644) 1. Kf4 Kxe6 2. Ke4 Kf6 3. Rg8 Ke6 (3... e6 4. Bg5#) 4. Rg6#
(3645) 1. Bh5 Ke3 2. Kf5 e4 3. Kg4 Ke2 4. Kf4#
(3646) 1. Rg7 Kf8 2. Rgc7 Rg8 3. Ra3 Rg7 4. Ra8#
(3647) 1. Rd1 Kxd1 2. Kf3 Kd2 3. Ne3 Kxe1 4. Bc3#
(3648) 1. Rh1 Nb3 2. Kb6 Nf7 3. Rg1 Nh6 4. Rf1 Nf5 5. Rh1 Nh6 6. Rxh6 Nd4 7. Rh8#
(3649) 1. Rb7 Kd6 2. Nf5+ Kc5 (2... Ke5 3. Re7+ Kf6 4. Bg8 Kg6 5. Re6#) 3. Ng3 Kd6 4. Ne4+ Ke5 5. Re7#
(3650) 1. Kf4 c6 2. Ng3 Kd6 3. Rb7 c5 (3... Ke6 4. Ne4 c5 5. Bh3#) (3... Kc5 4. Ne4+ Kd4 5. Rd7#) 4. Bd5 c4 5. Ne4#
(3651) 1. Ne6 Kd5 2. Kf5 Kc6 3. Nd8+ Kd5 4. Be5 Kc4 5. Nc6 Kd5 6. Na5 c4 7. Rb5#
(3652) 1. Kg2 d6 2. Kg3 Kf1 3. Kf3 Kg1 4. Rxd4 Kh2 5. Kf2 Kh3 6. c3 Kh2 7. Rh4#
(3653) 1. Qc4 Kb6 (1... Ka7 2. Qb5 Ka8 3. Qa6+ Kb8 4. Bd6#) (1... Kb8 2. Qc6 Ka7 3. Bc5+ Kb8 4. Bfd6#) 2. Qc8 Kb5 3. Bd8 Ka4 4. Qc4#
(3654) 1. e5 Kh3 2. Bf1+ Kh4 (2... Kh2 3. Nf3+ Kh1 4. Kg3 h5 5. Bg2#) 3. Nf5+ Kh5 4. Bb5 Kg6 5. Be8#
(3655) 1. g5 Kg3 2. Qf7 Nf5 (2... Kh3 3. Qf4 Ng6 4. Qg4#) 3. Qxf5 Kh4 4. Qg4#
(3656) 1. Kf7 Qa7+ 2. Kg6 Qg1+ 3. Kf6 Qg3 4. Qb1+ Qg1 5. Qxe4+ Qg2 6. Qxg2#
(3657) 1. Ne1 Kc4 (1... Ke4 2. Kf2 Kd5 3. Ke3 Kc4 4. Qc6#) 2. Nc7 Kc5 3. Na2 Kc4 4. Qc3#
(3658) 1. Kd2 Kxa1 (1... Nf3+ 2. Rxf3 Kxa1 3. Kc3 Kb1 4. Rf1#) 2. Kc2 Nf3 3. Rf1+ Ne1+ 4. Rxe1#
(3659) 1. Bd2 Qh6 2. f7 Qf4 3. f8=Q+ Qxf8 4. Bc1#
(3660) 1. Ne6 Kh5 (1... h5 2. Kf3 Kh3 3. Rg2 Kh4 (3... h4 4. Ng5#) 4. Rh2#) 2. Rg3 Kh4 3. Ng7 h5 4. Nf5#
(3661) 1. Rc3 Kd7 (1... bxc3 2. Ke6 c2 3. f6 c1=Q 4. f7#) 2. e8=Q+ Kxe8 3. Rd3 Kf8 4. Rd8#
(3662) 1. Ba6 Kd4 2. Nc6+ Kc5 3. Na5 Kd4 4. Nb3#
(3663) 1. Qd1 Kc4 (1... Nc8 2. Be5+ Kb4 3. Qb3+ Kc5 4. Qb5#) (1... Nc6 2. Qd2+ Kc4 3. Be3 Nd4 4. Qxd4#) (1... Kb4 2. Qd4+ Ka3 3. Bc1+ Ka2 4. Qb2#) 2. Qc2+ Kd4 3. Bb3 Nc6 4. Qc4#
(3664) 1. Bc3 c6 2. Re5 Kg7 3. e7 h5 4. e8=Q Kh6 5. Rxh5#
(3665) 1. Rb6 d5 (1... Ka5 2. Nc4+ Ka4 3. c3 d5 4. Rb4#) 2. Nxd5 Ka5 3. c4 Ka4 4. Ra6#
(3666) 1. Rh1+ Kg8 2. Rh8+ Kxh8 3. Qh1+ Kg8 (3... Rh2 4. Qa8+ Qb8 5. Qxb8#) 4. Qh7+ Kf8 5. Qf7#
(3667) 1. Rf2 Kxa7 2. Rf6+ Kb8 3. Rc6 Ka8 4. Rc8#
(3668) 1. Ke7 Qxh7+ (1... Qxg6 2. Rxg6 Kxh7 3. Kf7 Kh8 4. Rh6#) 2. Qf7 Qg6 3. Rh5+ Qxh5 4. Qg7#
(3669) 1. Rg1+ (1. R2g5 Be8 2. Rh7 Bh5 3. Kg7 Ne5 4. Rhxh5#) 1... Kh2 2. R7g2+ Kh3 3. Rg6 Kh2 4. R1g2+ Kh1 5. R2g5 f4 6. Rh5+ Bh3 7. Rxh3#
(3670) 1. Na6+ Kb5 2. Nc7+ Kc5 3. b4+ Kxc4 4. Bf1#
(3671) 1. Nb3 Kf4 (1... Ke4 2. Qg5 Kf3 3. Nd2+ Kf2 4. Qg1#) (1... Ke6 2. Bc8+ Kd6 3. Qd7+ Ke5 4. Qd4#) 2. Bd3 Kf3 3. Kh2 Ke3 4. Qg3#
(3672) 1. Kd6 O-O-O+ 2. Kc6 Rd6+ 3. Kxd6 Kb8 4. Kc6 Ka8 5. Qb7#
(3673) 1. Ng2 Bg6 2. Nf4 Be4 3. Ne2 Bd3 4. Nc3#
(3674) 1. Kd2 Kd4 (1... Ke4 2. Nf8 Kd4 3. Nd7 Ke4 4. Rxf7 Kd4 5. Rf4#) 2. Nf8 Kc5 3. Kc3 Kb5 4. Bc4+ Kc5 5. Nd7#
(3675) 1. Kg1 Kg3 (1... g4 2. Be1 g3 3. Ne5 g2 4. Bg4#) 2. Be5+ Kh3 3. Bf3 g4 4. Bg2#
(3676) 1. Be5 Kxh6 2. Bf6 Kh7 (2... g5 3. Bg7+ Kg6 4. Bd3#) 3. Bg7 g5 4. Bd3#
(3677) 1. Kc6+ Kc8 2. Qf5 Bd5+ 3. Kb6 Bb7 4. Qf8+ (4. Qc5+ Kb8 5. Qe5+) 4... Rd8 5. Qe7 Rd7 6. Qe8+ Rd8 7. Qe6+ Rd7 8. Qg8+ Rd8 9. Qxg4+ Rd7 10. Qf5 h6 11. Qc5+ Kb8 12. Qe5+ Kc8 13. Qf5 h5 14. Qc5+ Kb8 15. Qe5+ Kc8 16. Qf5 h4 17. Qc5+ Kb8 18. Qe5+ Kc8 19. Qf5 h3 20. Qc5+ Kb8 21. Qe5+ Kc8 22. Qh8+ Rd8 23. Qxh3+ Rd7 24. Qf5 Bd5 25. Qf8+ Rd8 26. Qe7 Rd7 27. Qc5+ Bc6 28. Qf8+ Rd8 29. Qe7 Rd7 30. Qe8+ Rd8 31. Qxc6+ Kb8 32. Qb7#

(3678) 1. b8=Q b2 (1... Ka4 2. Qb6 b2 3. Kxb2 b3 4. Qxb3#) 2. Qg8 Ka4 (2... b3 3. Qc4 a4 4. Qc5#) 3. Qc4 Ka3 4. Qa2#

(3679) 1. f6 Kh4 2. f7 Kh5 3. f8=Q Kg6 4. Kxg2 Kh7 5. Kxg3 Kg6 6. Kxg4 Kh7 7. Kf5 g4 8. Kf6 g3 9. Qg7#

(3680) 1. Rc3+ Ka2 2. Bg8+ Kb1 3. Rc4 Ka2 4. Ra4+ Kb1 5. Bh7+ Kc1 6. Rc4#

(3681) 1. Bb1+ Ka1 2. Kb3 Kxb1 3. Rc5 Ka1 4. Rc1#

(3682) 1. Bb4 d2+ (1... Kg8 2. f7+ Kg7 3. f8=Q+ Kxg6 4. Bd2 Kh5 5. Qf5+ Kh4 6. Be1#) 2. Bxd2 Kg8 3. Bh6 Kh8 4. Kxc2 Kg8 5. f7+ Kh8 6. f8=Q#

(3683) 1. Nd6+ Kg5 2. Be8 Kh4 3. Nf7 Kh5 4. Nge5 Kh4 5. Bd7 Kh5 6. Bg4+ Kh4 7. Ng6#

(3684) 1. c3 Kf6 2. Nd7+ Kg6 3. Nf8+ Kf6 4. c4 Ke5 5. Nd7# {B} c2-h2 1.h3}

(3685) 1. Nd4 Kxd4 (1... Kd3 2. Na5 Ke3 3. Nab3 Kd3 4. Rc3#) 2. Rc3 Kd5 3. Nb2 Kd4 4. Rd3#

(3686) 1. Rxd7+ Kxd7 (1... Kc5 2. Rd3 Kb4 3. Kb6 Ka4 4. c5#) 2. c5 Kd8 3. Kc6 Kc8 4. Re8#

(3687) 1. Bf7 Kc6 2. Be8+ Kc5 3. Bb5 Kb4 4. Bd6#

(3688) 1. b4 d3 2. Be4 Kxe4 3. Rf2 Kd4 4. Rf4#

(3689) 1. Rb5 Kc4 (1... e5 2. Rb4+ Kd5 3. Be4+ Ke6 4. Rb6#) 2. Nd6+ Kd4 3. Be4 e5 4. Rd5#

(3690) 1... gxh6 2. g4 h5 3. g5 h6 4. Kf7 hxg5 5. hxg5 Kh7 6. g6+ Kh6 7. Kf6 h4 8. g7 Kh5 9. Kf5 h3 10. g8=Q Kh4 11. Qg5# (11. Qg4#)

(3691) 1. Nd6 Kxd6 2. f7 Ke6 (2... Kc6 3. f8=Q Kb5 4. Qfc5#) 3. f8=R Kd6 4. Rf6#

(3692) 1. Rf7 Bf6 2. Rf8 Bg5 3. Rf1+ Bc1 4. Rxc1#

(3693) 1. Qf3 e4 (1... Kg5 2. Bd2+ Kg6 3. Qf8 Kh7 4. Bh6 Kg6 5. Qg7#) 2. Be1+ Kg5 3. Qf5+ Kh6 4. Bc3 e3 5. Qh5#

(3694) 1. Kc3 Kc1 2. Bg3 Kd1 3. Kd3 Kc1 4. Be5 Kd1 5. Bc3 Kc1 6. Na3 Kd1 7. Nc4 Kc1 8. Bd2+ Kb1 9. Kc3 Ka2 10. Kc2 Ka1 11. Kb3 Kb1 12. Na3+ Ka1 13. Bc3#

(3695) {2 daoaiy} 1. Kg5 (1. Rb2 Kc3 2. Ba3 Kd3 3. Bb4 Kd4 4. Rd2#) 1... Ke5 2. Bc5 Ke6 3. Rf3 Ke5 4. Re3#

(3696) 1. Nf7 Kc4 2. Rd3 e4 3. Ne5+ Kc5 4. Na6#

(3697) 1. Nd4+ Kd6 (1... Kf6 2. Kf8 Kg6 3. Rf5 Kh6 4. Kf7 Kh7 5. Rh5#) 2. Rb5 Kc7 3. Ke7 Kc8 4. Kd6 Kd8 5. Rb8#

(3698) 1. Kc6 Ka6 (1... b4 2. Bd8+ Ka6 3. Bb6 bxc3 4. b4 c2 5. b5#) 2. Bf2 Ka5 3. Kb7 b4 4. Bb6+ Kb5 5. c4#

(3699) 1. Rb6 Qd4+ 2. Qe3 Qxe3+ 3. Kxe3 Kg2 4. Nf4+ Kxh2 5. Kf2 Kh1 6. Rh6#

(3700) 1. Qc4 Bg2 2. Qf4+ Kg1 3. Qd4+ Kf1 4. Qc4 c5 5. Qc1+ Re1 6. Qd2 Re2 7. Qd1+ Re1 8. Qd3+ Re2 9. Qc4 Be4 10. Qc1+ Re1 11. Qd2 Re2 12. Qf4+ Bf3 13. Qc1+ Re1 14. Qc2 Re2 15. Qd1+ Re1 16. Qxf3+ Kg1 17. Qg2#

(3701) 1. Ka5 Ke6 (1... Ke4 2. Qg4+ Ke3 (2... Kd5 3. Ba4 Kd6 4. Qd7#) 3. Qf4+ Ke2 4. Qf2#) 2. Nb4 Kd6 3. Bb3 Kc5 4. Qe5#

(3702) {b} -f5} 1. Nd6 Rxd6+ 2. Kc1 Rc6 3. Qxc6 Kxa2 4. Qa4#

(3703) {aeie} 1. g4+ fxg4 2. g3 gxf3 3. Kf5 f2 4. g4#

(3704) 1. Bc3 Kd3 (1... Ke3 2. Nd5+ Kd3 3. Rf3+ Ke2 4. Nf4+ Kd1 5. Rf1#) 2. Nd5 Ke2 3. Kc1 Kd3 4. Rf3+ Ke2 5. Nf4#

(3705) 1. Ng3 c5 2. Be1 Kd4 3. Nf5+ Ke4 (3... Kc4 4. Nd6+ Kd4 5. Bf2#) 4. Bg3 c4 5. Re3#

(3706) 1. Rb6 f4 2. Nc4 Kxc4 3. Ke4 f3 4. Bd4 f2 5. b3#

(3707) 1. Rf7 Kd8 (1... Kb8 2. Ba6 Ka8 3. Nb6+ Kb8 4. Rb7#) 2. Nb6 Ke8 3. Bg6 Kd8 4. Rd7#

(3708) 1. Nc7+ Ka7 2. Nb5+ Ka8 3. Kb6 Bd7 4. Nc7#

(3709) 1. Qc6 Kg1 2. Qg6+ Kh1 3. Qe4+ Kg1 4. Qg4+ Kh1 5. Qf3+ Kg1 6. Qg3+ Kf1 7. Qxh2 d2 8. Qh1#

(3710) 1. Rf5+ Kc6 (1... Ke7 2. Bc7 Ke8 3. Bd6 Kd8 4. Rf8#) 2. Kb4 Kb6 3. Rf6+ Ka7 4. Ra6#

(3711) 1. Bg1 d4 2. c4 d3 3. Na4 d2 4. Nc5#

(3712) 1. Rd1 Kb5 2. Kd5 Ka4 (2... Kxa5 3. Kc5 Ka4 4. Ra1#) 3. Ra1+ Kb5 4. c4#

(3713) 1. Rg2 Kf5 2. Rg4 d4 3. e4+ Ke5 4. f4#

(3714) 1. Rf7 Rg5 2. Nf3+ Ke6+ 3. Nxc5+ Ke5 4. d4#

(3715) {b} a8-h8 c) a8-h1} 1. c4 Ka7 2. c5 Ka8 3. c6 Ka7 4. Qb7#

(3716) 1. Ke7 Kb6 (1... f6 2. Qb5+ Kd4 3. Bc6 f5 4. Qd5#) 2. Qb5+ Ka7 3. Bc6 f5 4. Qb7#

(3717) 1. d3 Bg1 2. d4+ Bxd4 3. Nd2 Bc3 4. Nf3#

(3718) 1. Kg3 c3 2. b3 c2 3. Bg7+ Ke3 4. Bc3 Ke2 5. Re5+ Kd1 6. Re1#
(3719) 1. Be5 Ke8 (1... Kc8 2. Re7 Kd8 3. Nc6+ Kc8 4. Rc7#) 2. Nb7 Kf8 3. Nd6 Kg8 4. Rh8#
(3720) 1. Rd4 Ke1 (1... Kc1 2. Kc3 Kb1 3. Ra4 Kc1 4. Ra1#) 2. Ke3 Kf1 3. Rg4 Ke1 4. Rg1#
(3721) 1. Ng7 Kf4 2. Rg6 Ke4 (2... Ke5 3. Kc6 Ke4 4. Rg4+ Ke5 5. Bd4#) 3. Kc6 Kf4 (3... Ke5 4. Be3 Ke4 5. Re6#) 4. Kd6 Ke4 5. Rg4#
(3722) {COOK} 1. Nf5 (1. Nf3 Be3 2. Ne5 Bd2 3. Nc6 Bc3 4. Nd8 Ba5 5. Ne6 Bb6 6. Nf4 Bc5 7. Ne2 Bb6 8. Nc1 Bc5 9. Nb3#) 1... Be5 2. Ne7 Bc7 3. Nc6 Bb6 4. Kc1 Bc5 5. Na5 Ba3+ 6. Kc2 Bb4 7. Nb3#
(3723) 1. Ba6 Kxa6 2. Ka4 e4 3. b4 e3 4. b5#
(3724) 1. Bb3+ Kd3 (1... Kb5 2. Rh6 Kc5 3. d4+ Kb5 4. a4#) (1... Kc5 2. Rh6 Kb5 3. a4+ Kc5 4. d4#) 2. Rh4 Ke2 3. Rh3 Ke1 4. Re3#
(3725) 1. Rg4 g6 (1... g5 2. Kg2 Ke2 3. Bc2 Ke3 4. Re4#) 2. Kf3 g5 3. Rxc5 Kd4 4. Rd5#
(3726) 1. Kh4 g5+ 2. Kxc3 g4 3. Kh4 g3 4. Qf6#
(3727) 1. Ba1 b2 2. Bxb2 b3 3. Ba3 b2 4. Bb4#
(3728) 1. Kc2 Kd4 (1... Ke5 2. Kc3 Ke4 3. Nh6 Ke5 4. Ng4+ Ke4 5. f3#) 2. Rf5 Ke4 3. Ne7 Kd4 4. Ng6 Ke4 5. Rf4#
(3729) 1. Kb3 Kb1 2. Ba3 Ka1 3. Bb2+ Kb1 4. Nc3# { iiaoiiee A.>
(3730) 1. Rd7+ Ke8 2. Re7+ Kf8 3. Rf7+ Kg8 4. Rg7+ Kh8 5. Rh7+ Kg8 6. Rag7+ Kf8 7. Rb7 Kg8 8. Rhc7 d1=Q 9. Rc8+ Qd8 10. Rxd8#
(3731) {b)c2-g2} 1. c4 Ke8 2. Nd7 Kd8 3. c5 Ke8 4. c6 Kd8 5. c7+ Kc8 (5... Ke8 6. c8=Q#) 6. Nc5#
(3732) 1. Rxe4 Kf6 2. Kh5 Kf5 3. Re8 Kf4 4. Kg6 Kg4 5. Rf8 Kh4 6. Kf5 Kg3 7. Kg5 Kh3 8. Kf4 Kg2 9. Kg4 Kh2 10. Kf3 Kg1 11. Rh8 Kf1 12. Rh1#
(3733) 1. Kd2 Kf2 2. Rf7+ Kg1 3. e3 Kh2 4. Rh7+ Kg1 5. Rh4 Kf2 6. Rf4+ Kg1 7. Rxe4 Kf2 8. Rf4+ Kg1 9. e4 Kh1 10. Rh4+ Kg1 11. e5 Kf1 12. Rf4+ Kg1 13. e6 Kh1 14. Rh4+ Kg1 15. e7 Kf1 16. Rf4+ Kg1 17. e8=Q Kh1 18. Rh4+ Kg1 19. Qe1#
(3734) 1. Qa5 Kf8 (1... Bb8 2. Qg5 Kd8 3. Qxe7+ Kc8 4. Qd7#) 2. Qg5 Be5 3. Qg6 Bf6 4. Qf7#
(3735) {aeie} 1. Qg5 h4 2. Kf2 g1=Q+ 3. Qxc1 Bf3 4. Qg6 Bb7 5. Qf5+ Kh2 6. Qg4 Bg2 (6... h3 7. Qg1#) 7. Qxc2#
(3736) 1. Bb1 Kg8 2. Nf5 Nxf5 3. Ba2+ Kf8 4. g7+ Nxc7 5. Ba3#
(3737) 1. Rg2 f6 2. Bd4 Kf4 3. Ke6 f5 4. Kd5 Kf3 5. Ke5#
(3738) 1. Nf1 Kf5 (1... Kf4 2. Bh7 Kf3 3. Bd3 Kf4 4. Qg3#) (1... Kd3 2. Qg2 Kd4 3. Qd5+ Kc3 4. Qd2#) (1... Kf3 2. Qg3+ Ke2 (2... Ke4 3. Be6 Kd4 4. Qe3#) 3. Bb3 Kxf1 4. Bc4#) 2. Qd4 Kg5 (2... Kg6 3. Qf4 Kh5 4. Bf7#) 3. Ng3 Kg6 4. Qg7#
(3739) 1. Bc5 Kb1 (1... Ka1 2. Kb3 Kb1 3. Ba3 Ka1 4. Bb2+ Kb1 5. Nc3#) 2. Kb3 Kc1 3. Nc3 Kd2 4. Bf2 Kc1 5. Be3#
(3740) 1. Qd2 Be4 2. Qc1+ Bb1 3. Kd6 Nb4 4. Qc3# {oaeaa Aa~~adicee Iine 1993}
(3741) 1. h4 f6 2. h5 a6 3. h6 a5 4. h7 a4 5. h8=R f5 6. Rh3#
(3742) 1. a7 Ra3 2. Be3 Rxa7+ (2... Rc3 3. Bc1 Rxc1 4. Rxc1 Kxa7 5. Ra5# (5. Ra1#)) 3. Kc8 Ra6 4. Ra5 Rxa5 5. Rxa5#
(3743) {b) d6N-a4 c) f3K-g4 d) f3K-b6} 1. Ne4 Kd5 2. Rb6 Kd4 3. Nb2 Ke5 4. Rf6 Kd4 5. Kf4 Kd5 6. Rd6#
(3744) 1. Ng4 Be4 2. Ne3 f6 3. Ng4 Bd5 4. Nxf6 Bc6 5. Nh5 Be8 6. Ng7 Bd7 7. f6 Be6 8. Ne8 Bd7 9. Nc7#
(3745) 1. Bd3 Ke5 (1... Kg5 2. Qf5+ Kh4 3. Qf4+ Kh5 4. Qg3 Kh6 5. Qg6#) 2. Qh6 Kxd5 3. Qf6 Kc5 4. Bc4 Kxc4 5. Qc6#
(3746) 1. Bb8 h4 2. Nh6+ Kxc5 3. Bf4+ Kh5 4. g4#
(3747) 1. Nd5 ({iia.dao.} 1. Qd7 Nd6 2. Bh6+ Kg8 3. Qg7#) 1... Ke8 2. Bb4 Nd6 3. Qc8 Nxc8 4. Nf6#
(3748) 1. Ke3 Kf5 2. Rh6 Kg4 3. Ke4 Kxh4 4. Re6 Kg4 (4... Kg5 5. Bd8+ Kg4 6. Rg6#) 5. Rg6+ Kh4 6. Bg3#
(3749) 1. Be2 Ng3 2. Rh5+ Nxc5 3. Be7+ Nf6 4. Bxf6#
(3750) 1. Kxc2 Qxc7 (1... Ka2 2. Qf7+ Ka1 3. Qf1+ Ka2 4. Qb1#) 2. Nb3+ Ka2 3. Nc1+ Ka1 4. Bxc7#
(3751) {b)Sf8} 1. Rxa7+ Kxa7 2. Nc4 Ka8 3. Ne6 Ka7 4. b6+ Ka6 5. Nc7#

(3752) 1. Nd6 cxd6 2. e4 d5 3. e5 d4 4. e6 d3 5. e7 d2 6. e8=N d1=Q 7. Nc7#
(3753) 1. Nb6 Kd4 2. Nd7 Kd3 3. Nf8 Kd4 4. Ne6+ Kd3 5. Ke1 Ke3 6. Rc3#
(3754) 1. Kf3 c5+ (1... Qf7+ 2. Qxf7 e5 3. Kf2 Kh3 4. Qh5#) 2. Kf2 Qf7+ 3. Qxf7 Kh3 4. Qh5#
(3755) 1. Kd8 Nc6+ 2. Ke8 Ne7 (2... d5 3. c8=Q+ Nb8 4. Qb7#) 3. Kxe7 d5 4. c8=Q#
(3756) {b}b8-f1 c}f2-e8} 1. Qf7 Kd6 2. Nd3 Kc6 3. Nd4+ Kb6 4. Qa7#
(3757) 1. Kc7 Bc8 2. Qxg2+ Kxa7 3. Qb2 Ba6 4. Qb8#
(3758) 1. Bh6 Kh8 2. Be3 Kg8 3. Bc5 Kh8 4. Bd4+ Kg8 5. Bg7 a3 6. Bxb3#
(3759) 1. f8=B Kf6 2. d8=Q+ Kf7 3. Qe7+ Kg8 4. Qg7# {oaeaa "Eoaeaniee"1994}
(3760) {a}+~.i.a6} 1. Ra4 Kxa4 2. Rb2 Ka5 3. Nc3 Ka6 4. Ra2#
(3761) 1. Rd4 Kxd1 (1... Kxb1 2. Kxd2 Ka1 3. Ra4+ Kb1 4. Bc2#) 2. Rxd2+ Kc1 3. Nc3 b1=Q 4. Ne2#
(3762) {ecia.caaea~a "O"} 1. Ke7 Bg8 (1... gxf5 2. f8=Q+ Bg8 3. Kf6 Kh7 4. Qg7#) 2. f8=Q gxf5 3. Kf6 f4 4. Qg7#
(3763) {a}a1=h1} 1. Rh8 e5 2. Rh6 Kf5 3. Kg3 e4 4. Bg4#
(3764) 1. h7 Kc6 2. h8=Q Kd5 (2... Kd7 3. Kb7 c4 4. Qc8#) (2... Kc7 3. Qe8 c4 4. Ne6#) (2... c4 3. Qe8+ Kc5 4. Qb5#) 3. Kb5 c4 4. Qd4#
(3765) 1. Kc3 Kxb1 (1... Kxa2 2. Kc2 Ka1 3. Bxb2+ Ka2 4. Nc3#) 2. Kb3 Ka1 3. Bxb2+ Kb1 4. Nc3#
(3766) 1. Kf2 Qxg3+ (1... Nxg3 2. Rxg3+ Kh2 3. Rxg8 Kh3 4. Rh8#) 2. Rxg3+ Kh2 3. Bxe2 Kh1 4. Rh3#
(3767) 1. b3 Ka2 2. Bc1 Ka1 3. Bb2+ Ka2 4. b4#
(3768) 1. Re1 e2 2. Rxe2 e3 3. Rxe3 Ka1 4. Rxa3#
(3769) 1. Bc3 e2 2. Be1 g6 3. Bc3 e1=Q 4. Rh8#
(3770) 1. Ra5 Kd4 (1... Kf4 2. Nf1 a3 3. Bg4 a2 4. Rf5#) 2. Nd1 a3 3. Bc4 a2 4. Rd5#
(3771) 1. Qd4+ Kb5 (1... Ka3 2. Qxd1 Kxa2 3. Qc2+ Ka1 (3... Ka3 4. Bd6#) 4. Be5#) 2. Kd6 f4 3. Qc5+ Ka4 4. Qa5#
(3772) 1. Qa4 Kd5 (1... Kf5 2. Qh4 Kg6 (2... Ke5 3. Bf3 Kf5 4. Qf6#) 3. Bd3+ Kg7 4. Qh7#) 2. Qb4 Kc6 3. Bf3+ Kc7 4. Qb7#
(3773) 1. O-O-O Ka4 (1... Kc4 2. Kc2 Kc5 3. Rd6 Kc4 4. Rc6#) 2. Kc2 Ka5 3. Rd6 Ka4 4. Ra6# {6 laideae O.Aiediaa}
(3774) 1. Bh3 Nb5 2. Bf1 Nc3 3. Be2+ Nxe2 4. Na2 Nc1 5. Nc3#
(3775) 1. Rg4 Kh1 2. Ng5 Kh2 (2... h2 3. Ne4 h3 4. Nf2#) 3. Nf3+ Kh1 4. Rg1#
(3776) 1. Rdg1 Kh3 (1... f2 2. R4g2+ Kh3 3. Rxf2 Kh4 4. Rh2#) 2. R1g3+ Kh2 3. Rxf3 Kh1 4. Rh3#
(3777) 1. h6 Nxb6+ 2. Kf8 Ng8 3. Bh6 Nxb6 4. Nd6 Nf7 5. Nxf7#
(3778) {a} a3-n3} 1. h4 b4 2. h5 bxa3 3. Kc2 Kxa2 4. h6 Ka1 5. h7 Ka2 6. h8=R Ka1 7. Kb3 Kb1 8. Rh1#
(3779) 1. Bb1 axb3 2. Bc3 b2 3. Bb4+ Ka4 4. Bc2#
(3780) 1. Ra3 Kf1 2. Ra1+ Ke2 3. Kxg2 Kd2 4. Ra2+ Kc1 5. Rh1#
(3781) 1. Qc3 Ka4 2. Qb2 Ka5 (2... b5 3. Kb6 b4 4. Qa2#) 3. Qb3 b5 4. Qa3#
(3782) 1. Nd5 ({iia.daoaiey} 1. Na4 Kc4 2. Qc5+ Kb3 3. Qc3+ Kxa4 4. Bc6#) (1. Bf1+ Ke4 2. Nc4 Kd5 3. Qf5+ Kc6 4. Bg2#) 1... Kc4 2. Qc2+ Kb5 3. Bf1+ Ka5 4. Qa2#
(3783) 1. Bb1 e5 (1... Kb4 2. Ba2 Ka4 3. Nc2 e5 4. b3#) 2. Ba2 e4 3. Nc2 e3 4. b3#
(3784) 1. Kc2 a1=N+ 2. Kxc3 Ka2 3. Ra4+ Kb1 4. Bf5+ Nc2 5. Bxc2+ Kc1 6. Ra1#
(3785) {aeie} 1. Ba3 Kc3 2. Kd5 Kd2 3. Bc5 Kc3 4. Bb4#
(3786) 1. Na8 d4+ 2. Kd3 Kd6 3. Kxd4 Kc6 4. Qd5#
(3787) 1. Nh3 Kf3 2. Bd3 Kg2 3. Be2 Kxh3 4. Bf1#
(3788) 1. Re3 c4 (1... Kc4 2. Kc6 Kb4 3. Nxc5 Ka5 4. Ra3+ Kb4 5. Ra4#) 2. Kd7 c3 3. d3 c2 4. Rf3 c1=Q 5. Rf5#
(3789) 1. Nd4 Kgl 2. Ne2+ Kh1 3. Ng3+ Kgl 4. Be5 h1=Q 5. Ne2#
(3790) 1. Rc8+ (1. Be6 Kf8 2. Be5 dxe5 3. Rg3 e4 4. Rg8#) 1... Kd7 2. Rd8+ Kxd8 3. Ba4 d5 (3... e5 4. Bh4#) 4. Bc7#
(3791) 1. Kb5 d6 2. Kc6 Kb4 3. Rb5+ Kc3 4. Kd5 Kxd3 5. Rb3#
(3792) 1. Ba3 Kb1 2. Kd2 Ka1 3. d4 Kb1 4. Nc3+ Ka1 5. Nb3#
(3793) 1. Rd3 Rd7 2. Nf7+ Rxf7+ 3. Kxf7 Kxh7 4. Rh3#

- (3794) 1. Bb8 a5 2. Bd6 a4 3. Nb7+ Kb3 4. Na5#
- (3795) {b}e3-d3} 1. Ke6 Ke4 2. Ng2 Kd4 3. Ne1 Ke4 4. Rc4#
- (3796) 1. Qd2+ Kb5 (1... Kc4 2. Bb6 Kb5 3. Qa5+ Kc4 4. Qc5#) 2. Qb2+ Kc4 3. Bb6 d2 (3... Kd5 4. Qd4#) 4. Qb3#
- (3797) 1. Bf4 Kxh4 2. Kf3 Kh3 3. Ne4 Kh4 4. Bg3+ Kh3 5. Nf2#
- (3798) 1. Bh2 Qc3+ 2. Qf3+ Qxf3+ 3. Kxf3 Kxh2 4. Re1 Kxh3 5. Rh1#
- (3799) 1. Rd1 Ke4 (1... Kc4 2. Ra5 Kc3 3. Ba3 Kc4 4. Rc5#) 2. Ra5 Ke3 3. Bg3 Ke4 4. Re5#
- (3800) 1. Kc3 Kb1 (1... Ka2 2. Kc2 Ka1 3. Bb2+ Ka2 4. Nc1# (4. Nc3#)) 2. Kb3 Ka1 3. Bb2+ Kb1 4. Nc3#