

Strmilovská zastavení bohyně Caissy

38. díl

diagramy 7401-7600

Velmistr Odpovídá ...

jméno: **jichočech**

email:

October 21, 6 : 37

[Computer info](#)

Číslo otázky: 1

Zajímalo by mě, kolik procent šachového výkonu hraje fyzická kondice hráče. Asi tomu bude jinak u vážných partií a jinak u bleskovek.

Díky za dotaz! Spousta laiků se domnívá, že šachisté vůbec žádnou fyzickou kondici nepotřebují, což je velký omyl! Vezměme si třeba první světovou desítku hráčů - čistě šachově jsou dle mého názoru na víceméně stejné úrovni, ale pak výkon jednotlivých hráčů již rozhodují zdánlivé mimošachové maličkosti (práce s psychologem, fyzická kondice, motivace,...). Například čerstvý mistr světa Topalov má při partiích obrovskou zásobu energie, opačným příkladem může být Kramnik, který za ním poslední dobou kondičně značně pokulhává - a jejich letošní výsledky jsou pak zcela odlišné.

Dobrá fyzická připravenost je základním kamenem každého úspěšného turnaje - má přímý vliv jak na dobře zvládnuté závěry vyčerpávajících několikahodinových partií, tak i na dostatek sil v posledních kolech týdenního turnaje. V závěru mnoha turnajů můžeme často pozorovat tento jev: cesty přibližně vyrovnaných hráčů se v turnajovém finiši úplně rozdělí - zatímco "pecivál" kazí dobře rozehrané partie a končí hluboko v poli poražených, "sportovec" svojí výdrží problémy překoná a slaví úspěch. Vše souvisí se vším, s dobrou kondicí jde ruku v ruce i zvýšená psychická odolnost.

Při jednotlivých bleskových partiích je kondice zanedbatelná, ale něco jiného je například celodenní turnaj v blickách nebo rapidu. Zatímco dopoledne je všechno ještě v normálu, v závěrečných odpoledních kolech se pravidelně prosazují spíše fyzicky odolnější jedinci.

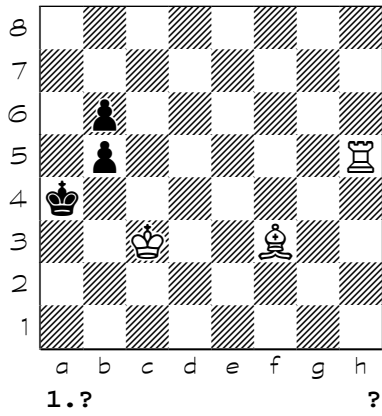
Takže vřele doporučuji pěstovat doplňkové sporty - tenis, stolní tenis, jízda na kole, plavání, běh na lyžích, pěší turistika, apod.

GM Tomáš Polák

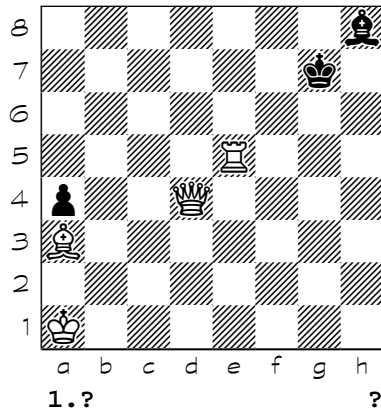
<http://www.strmilov.cz/>

Chess diagrams

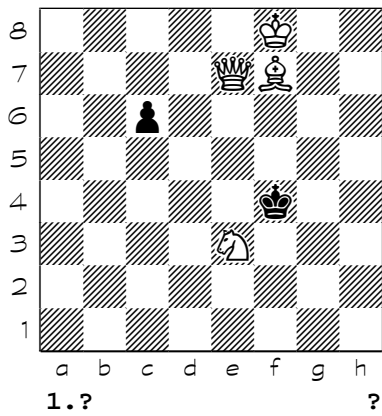
7401



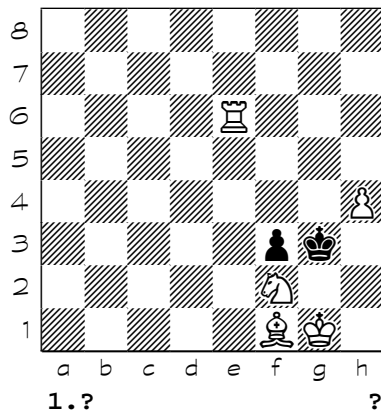
7402



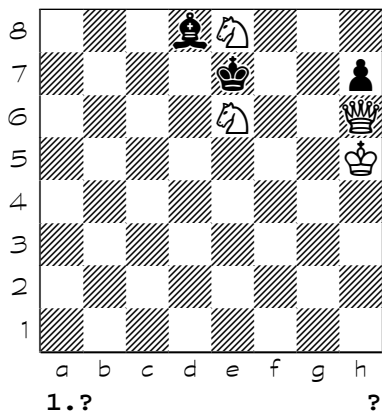
7403



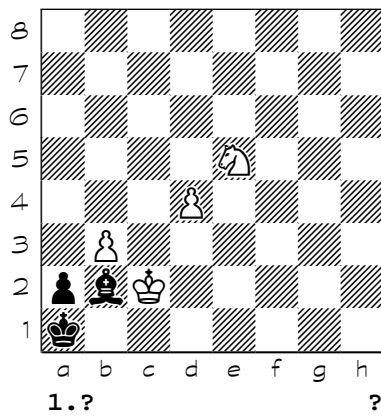
7404



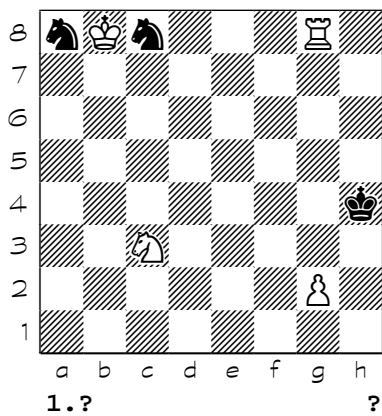
7405



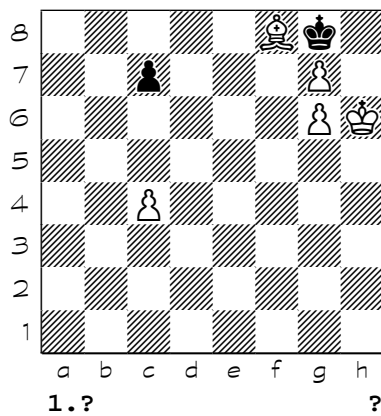
7406



7407

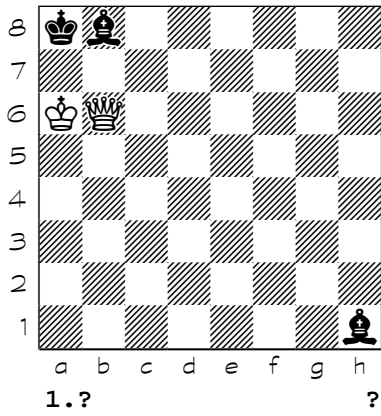


7408

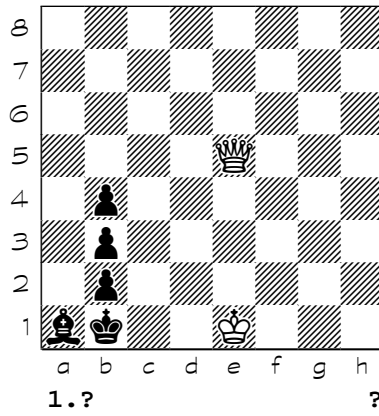


Chess diagrams

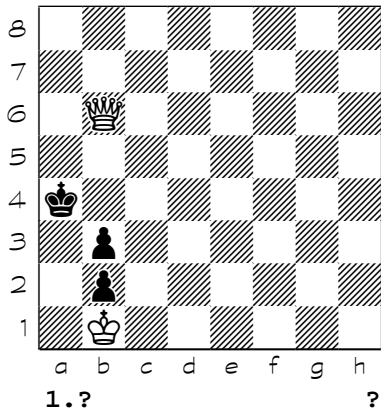
7409



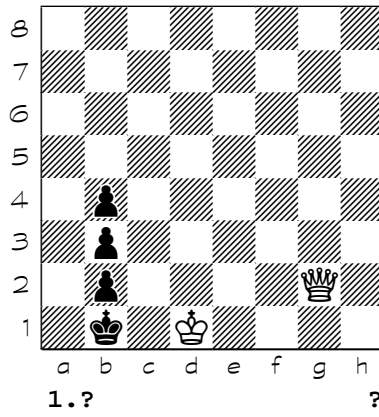
7410



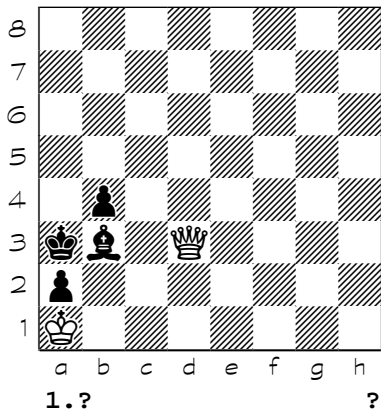
7411



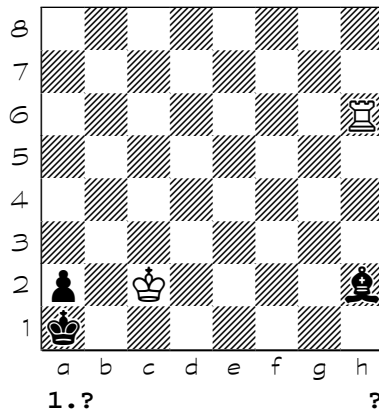
7412



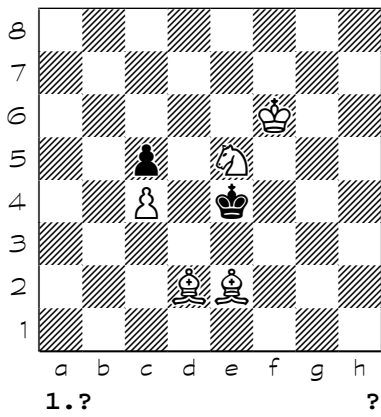
7413



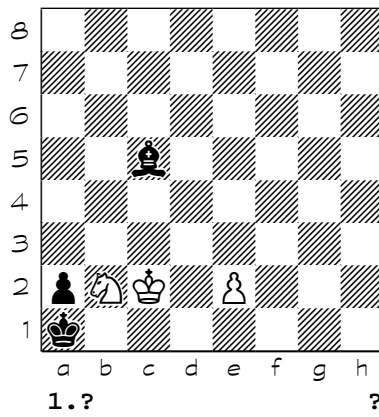
7414



7415

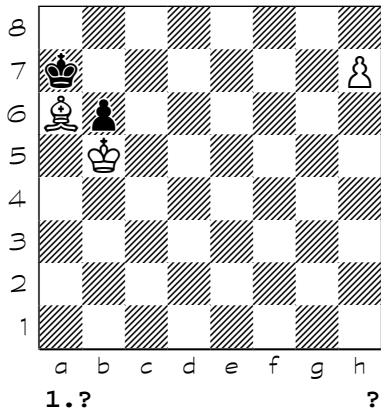


7416

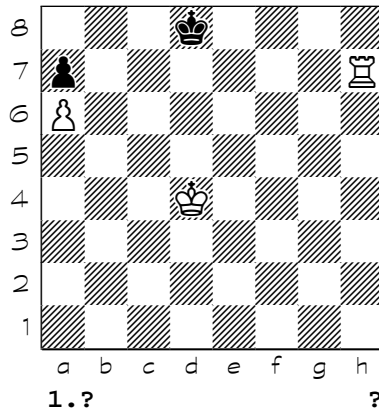


Chess diagrams

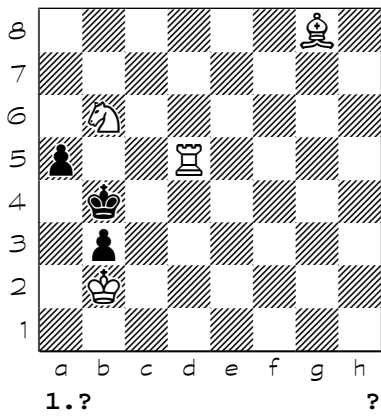
7417



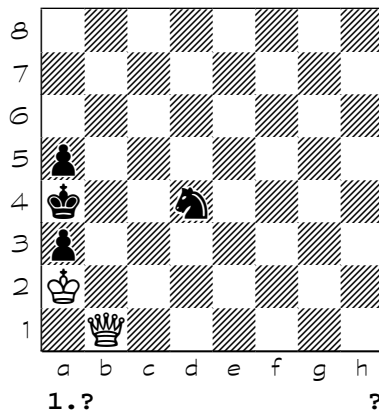
7418



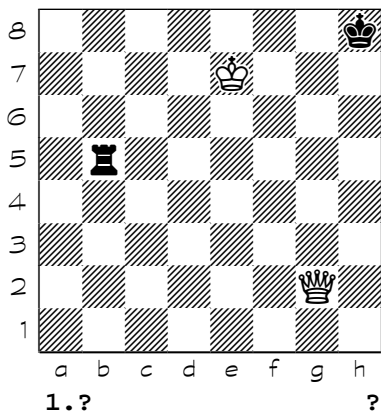
7419



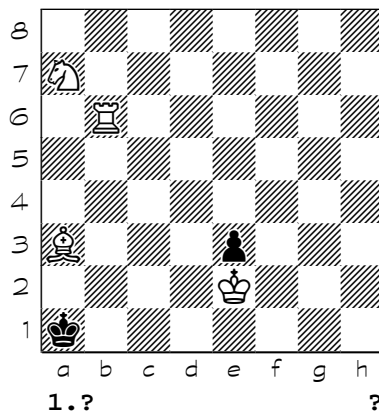
7420



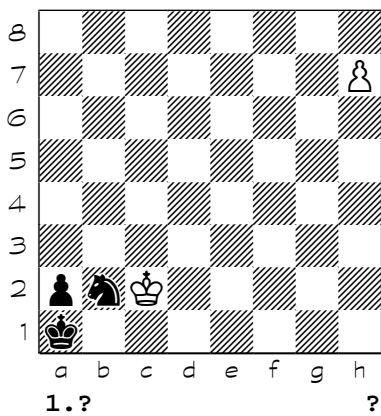
7421



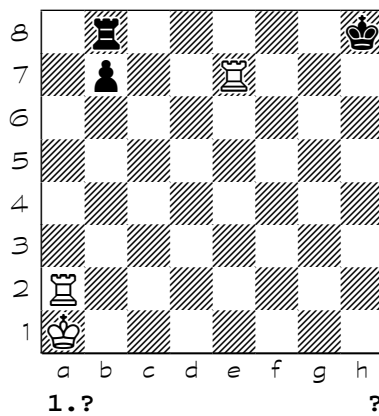
7422



7423

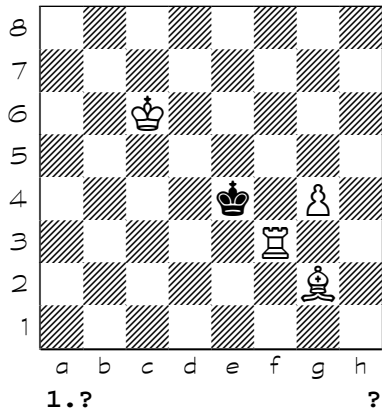


7424

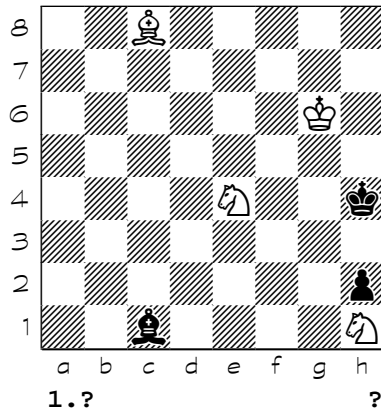


Chess diagrams

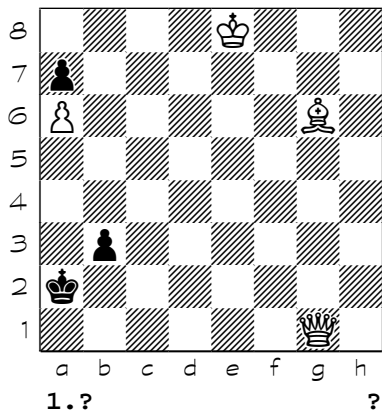
7425



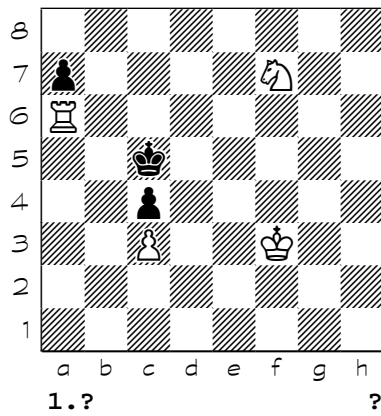
7426



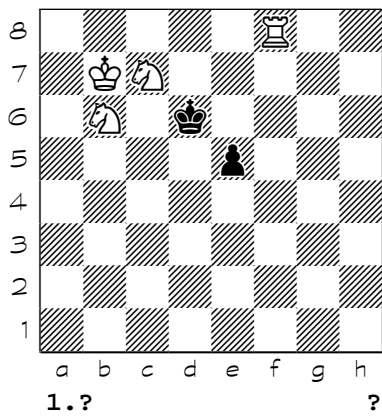
7427



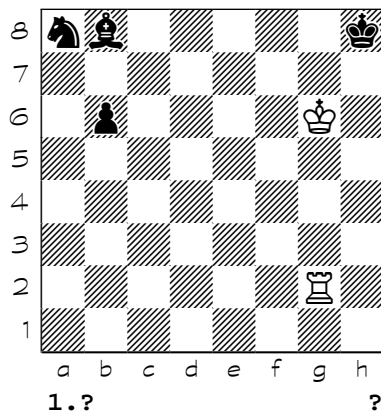
7428



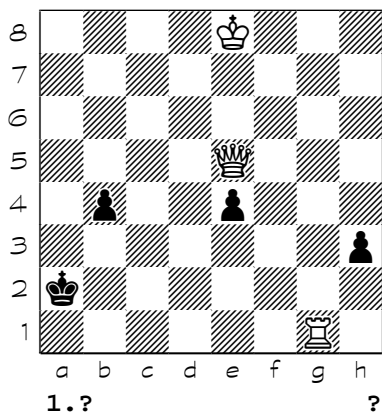
7429



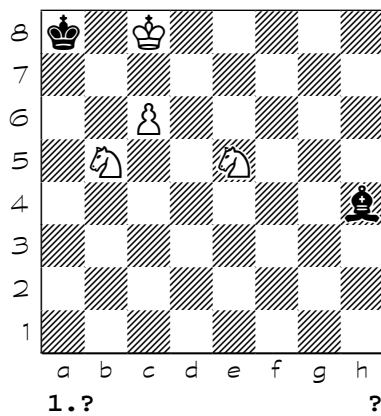
7430



7431

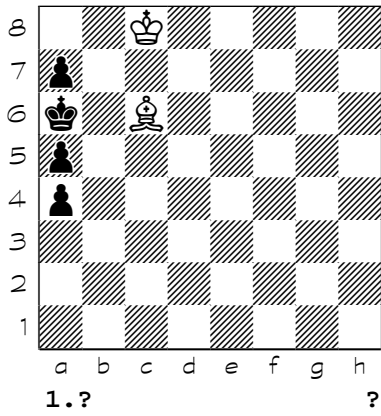


7432

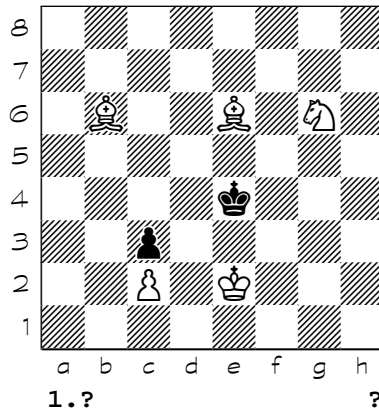


Chess diagrams

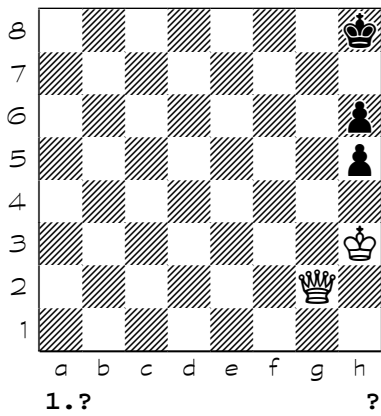
7433



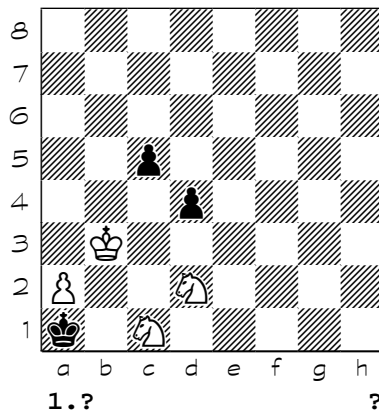
7434



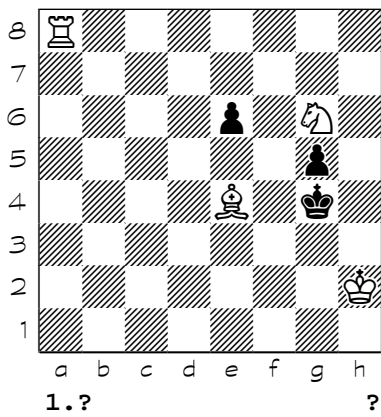
7435



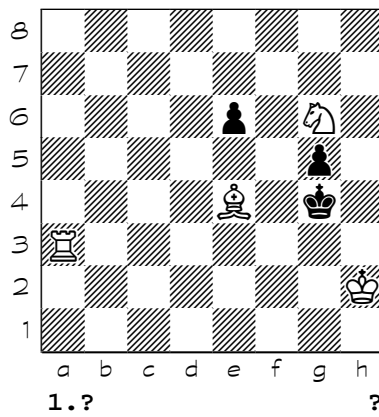
7436



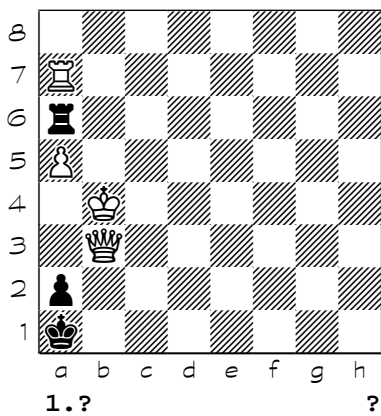
7437



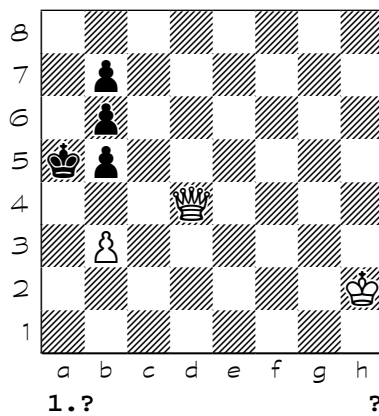
7438



7439

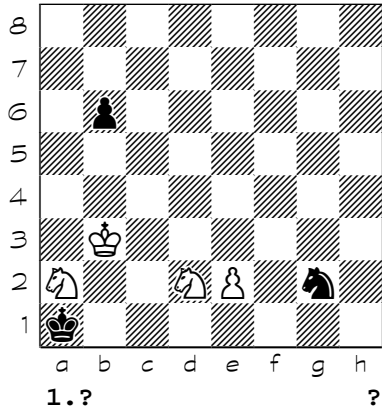


7440

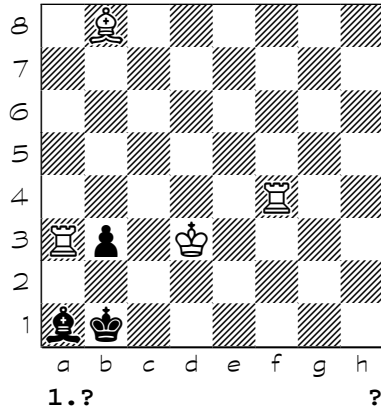


Chess diagrams

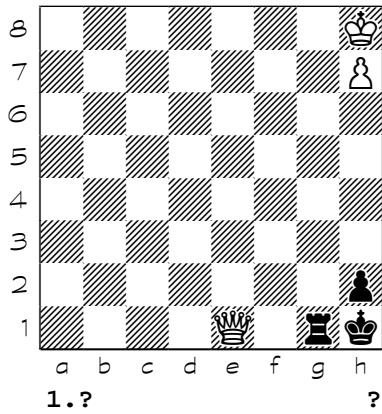
7441



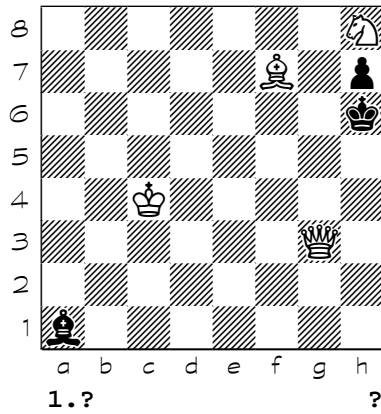
7442



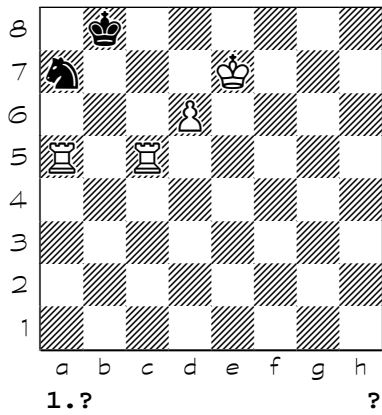
7443



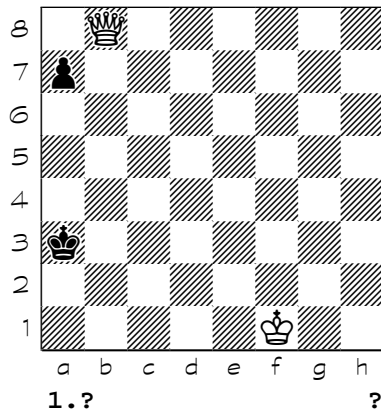
7444



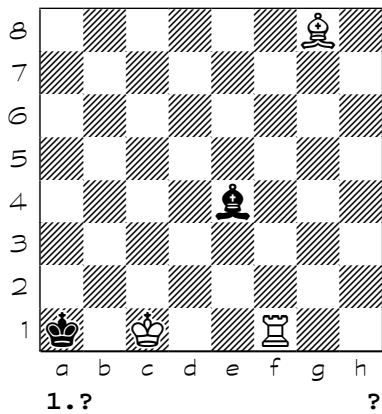
7445



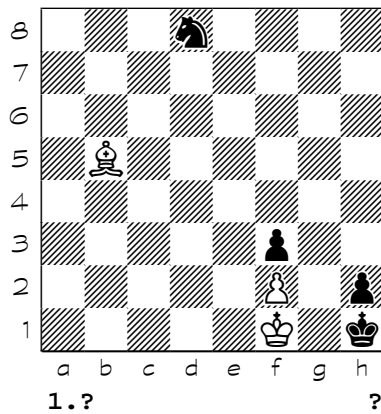
7446



7447

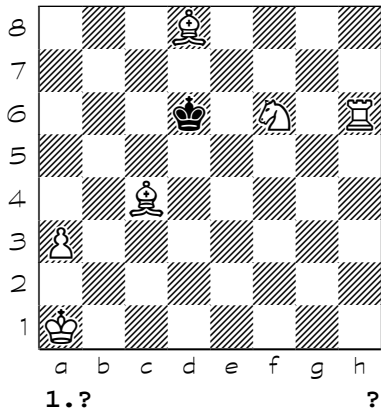


7448

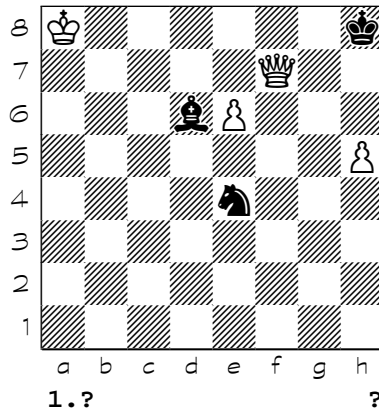


Chess diagrams

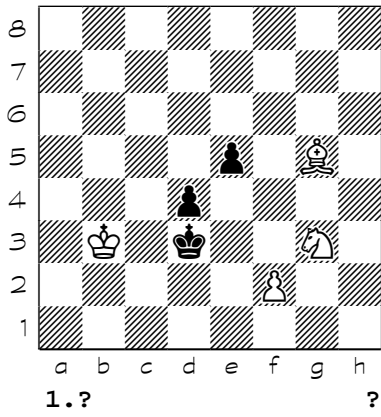
7449



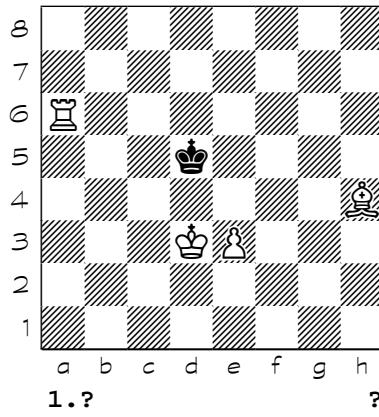
7450



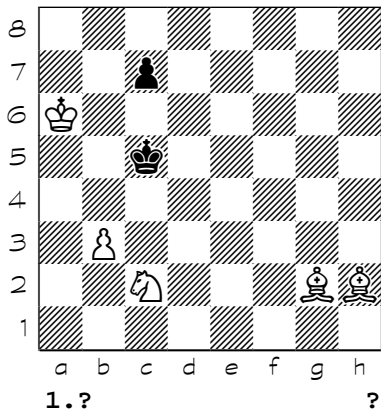
7451



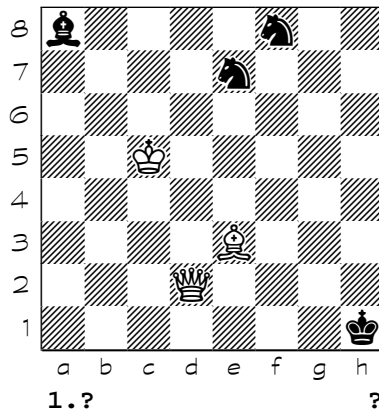
7452



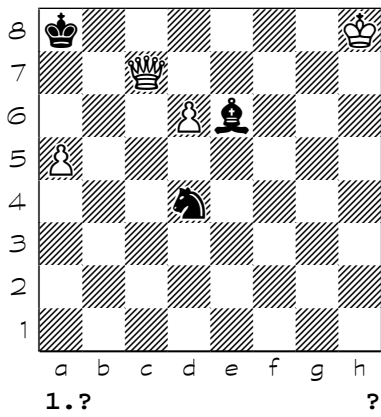
7453



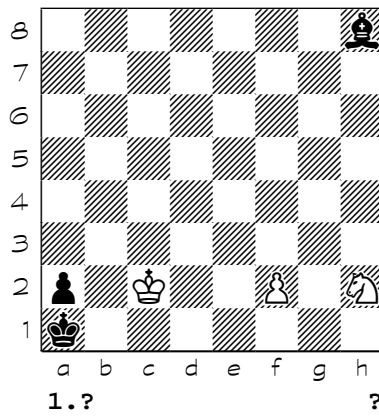
7454



7455

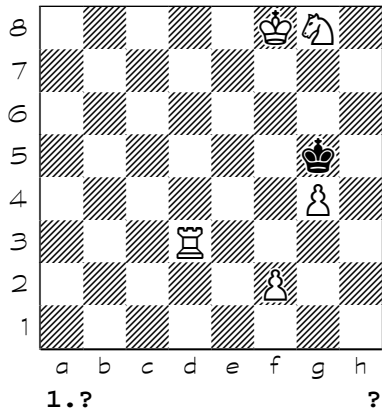


7456

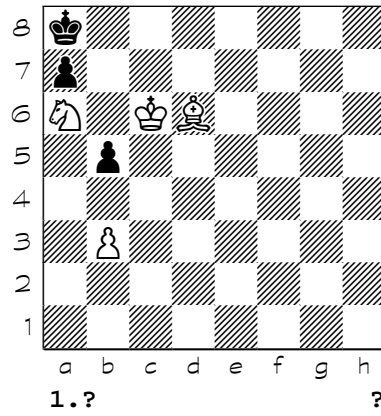


Chess diagrams

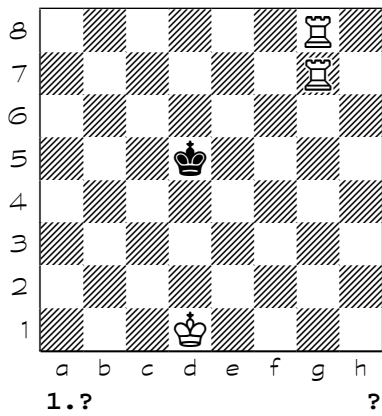
7457



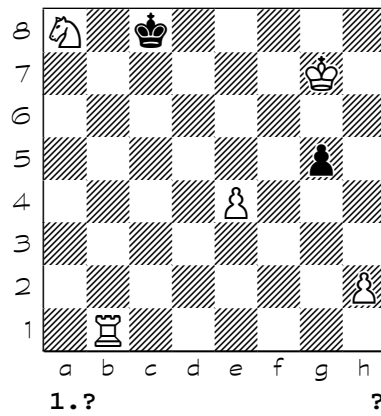
7458



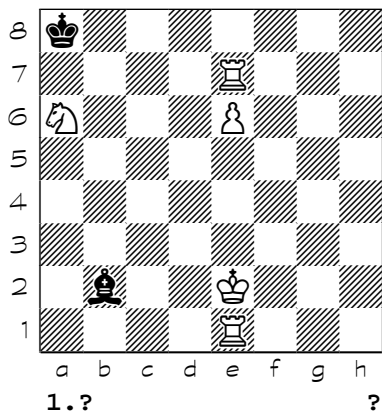
7459



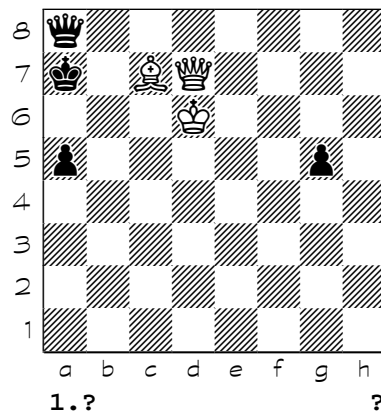
7460



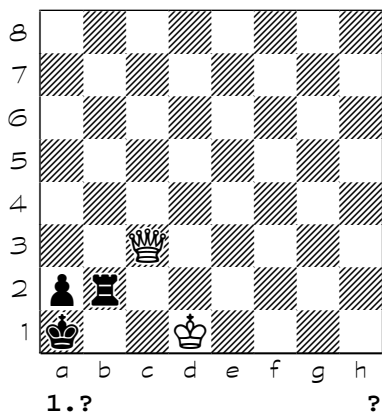
7461



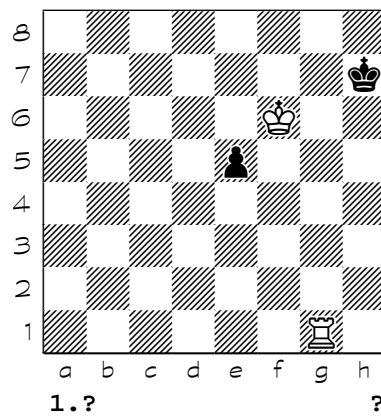
7462



7463

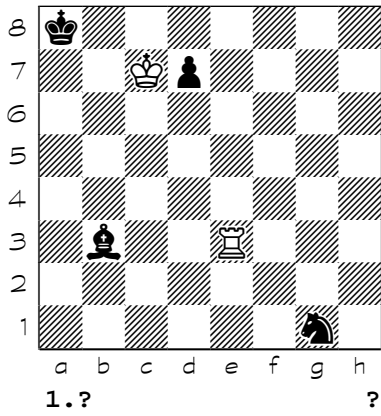


7464

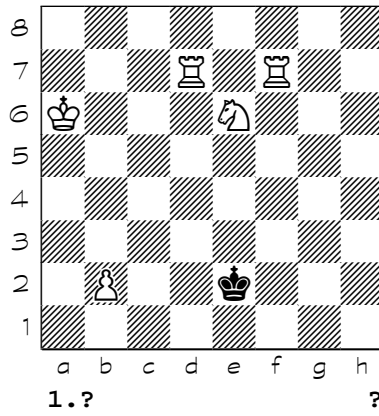


Chess diagrams

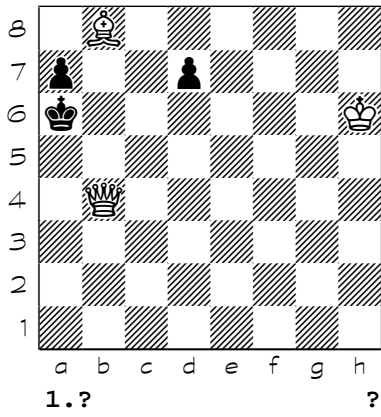
7465



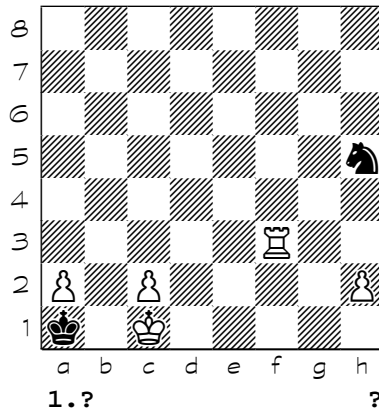
7466



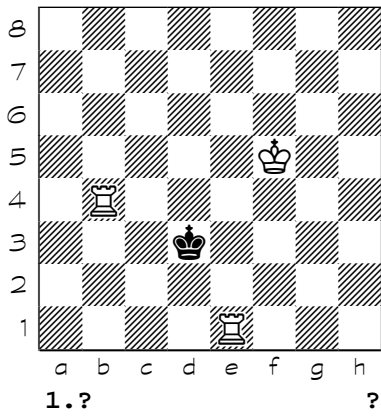
7467



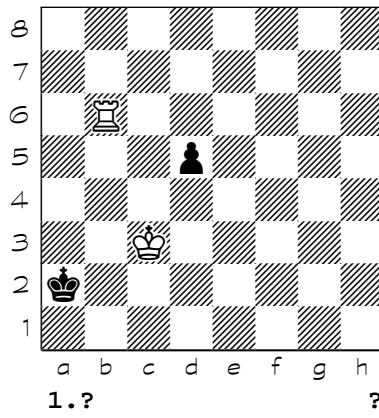
7468



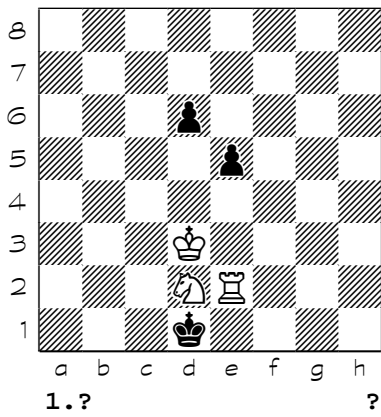
7469



7470



7471

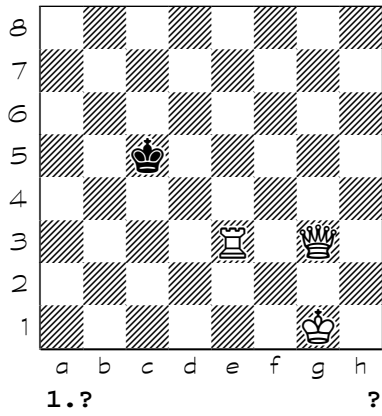


7472

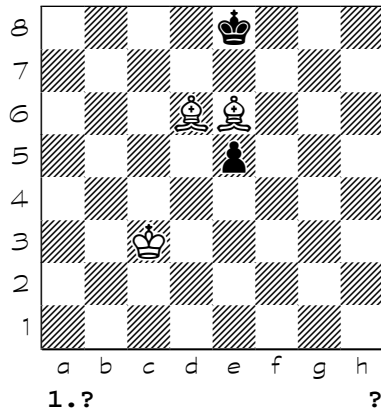


Chess diagrams

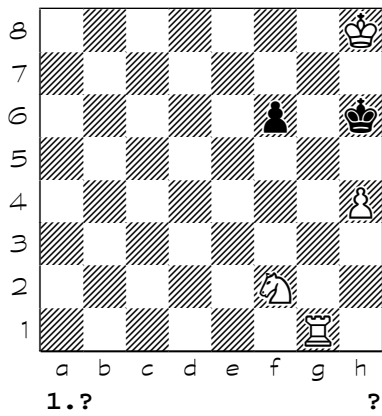
7473



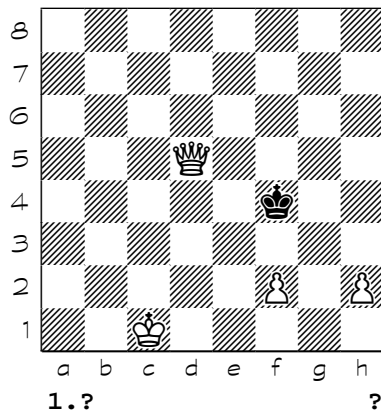
7474



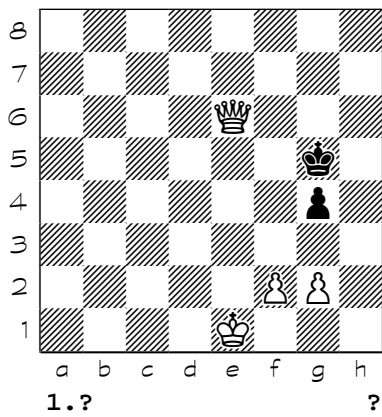
7475



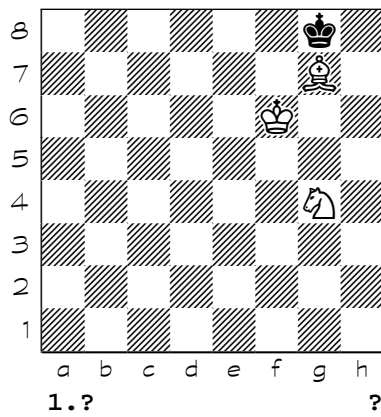
7476



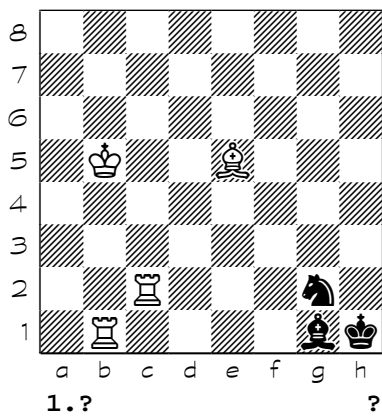
7477



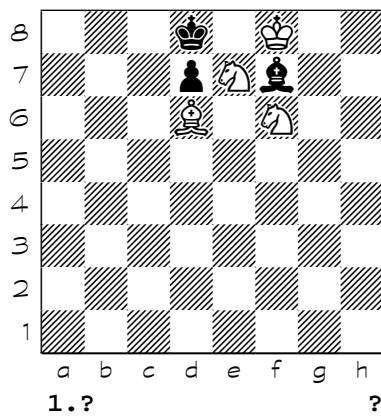
7478



7479

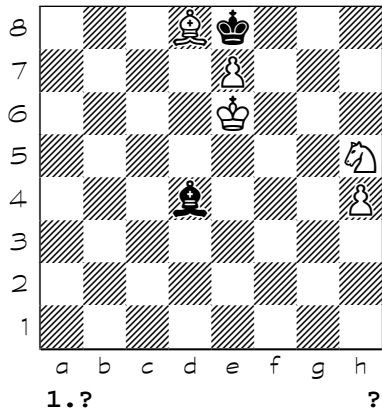


7480

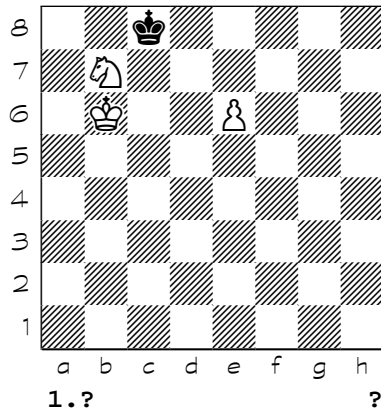


Chess diagrams

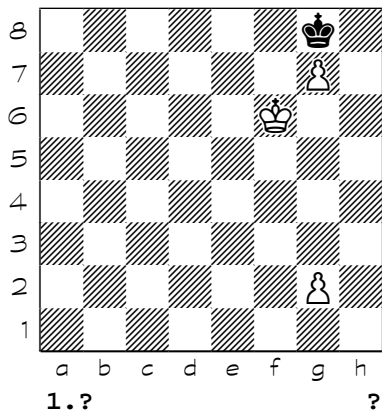
7481



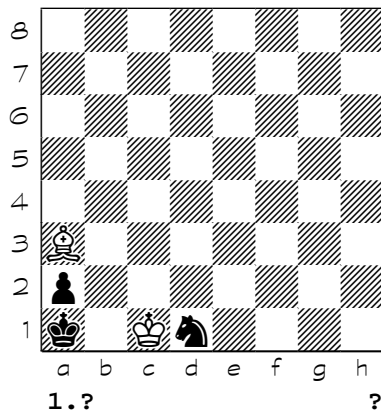
7482



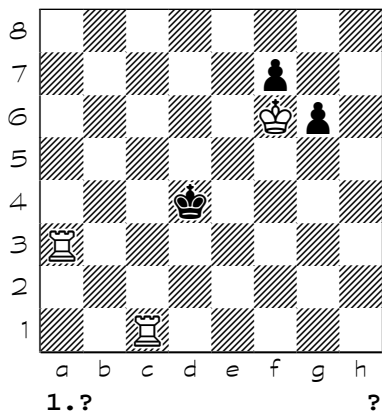
7483



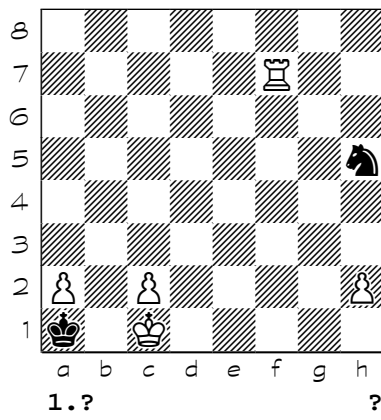
7484



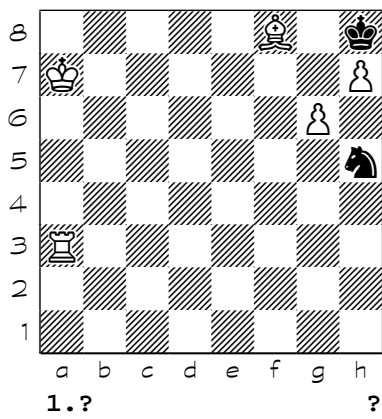
7485



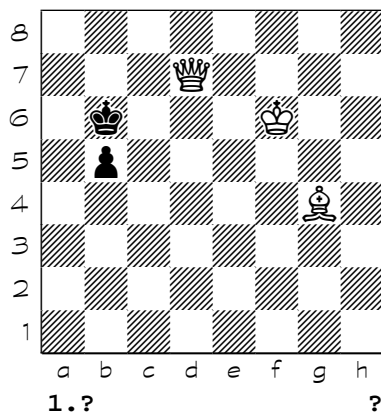
7486



7487

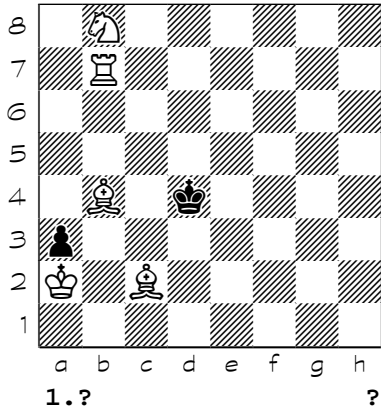


7488

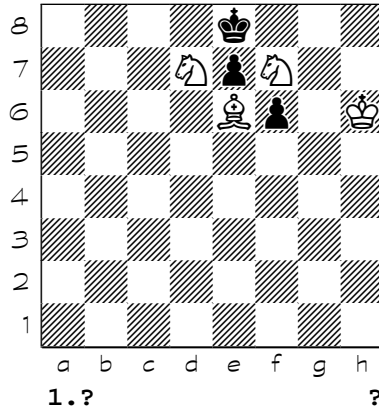


Chess diagrams

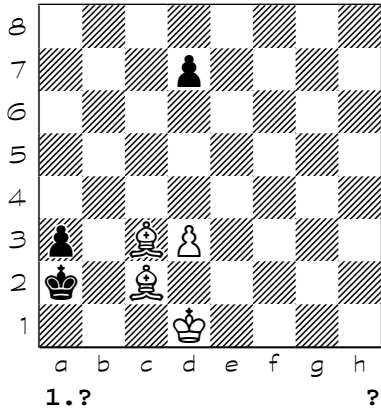
7489



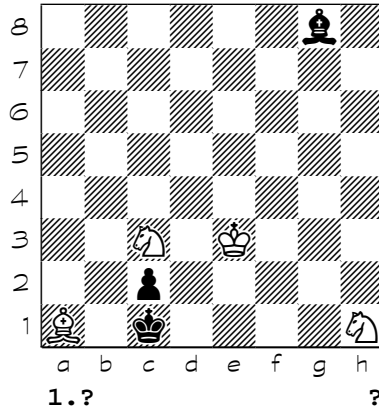
7490



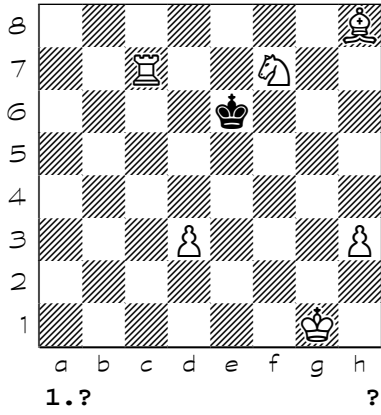
7491



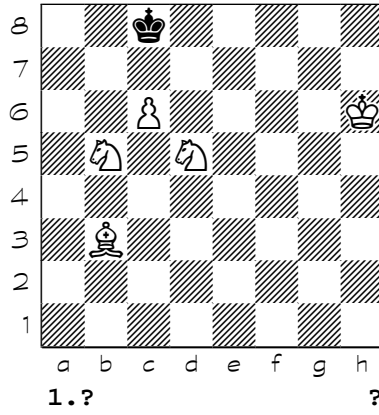
7492



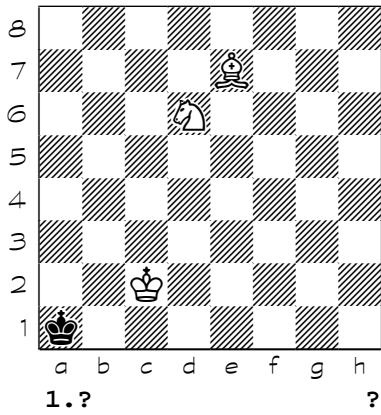
7493



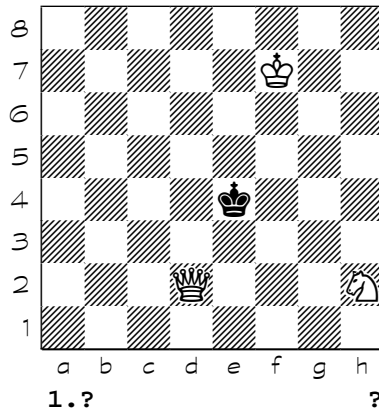
7494



7495

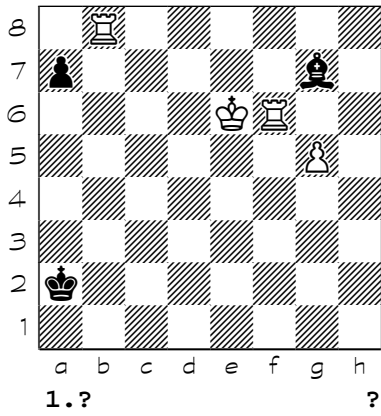


7496

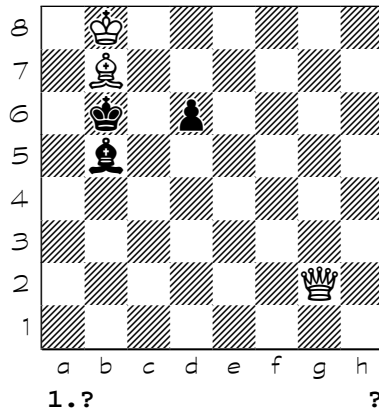


Chess diagrams

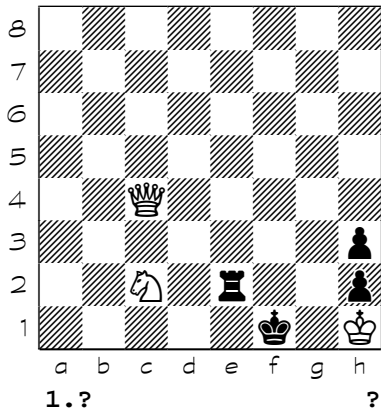
7497



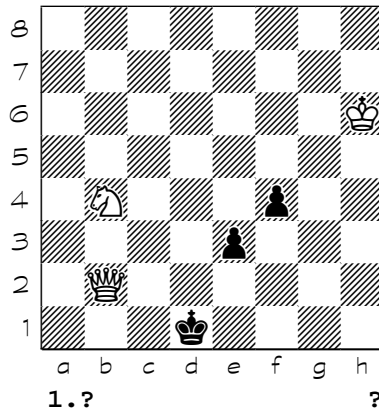
7498



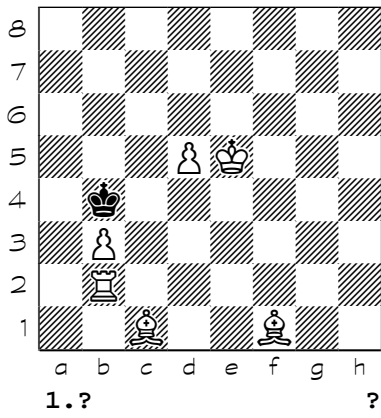
7499



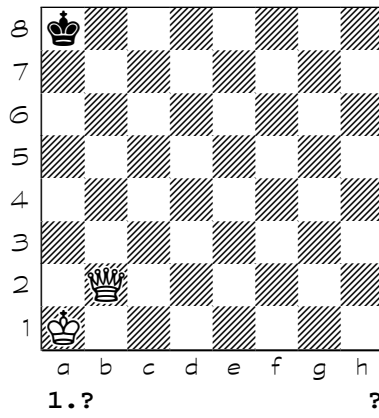
7500



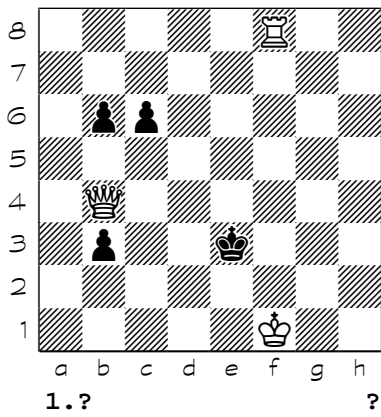
7501



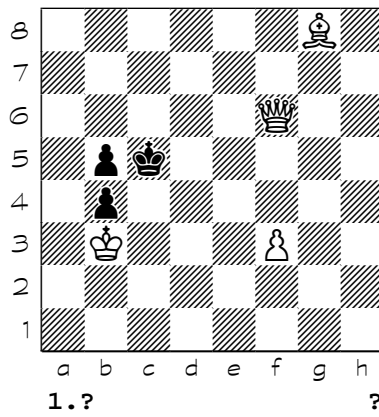
7502



7503

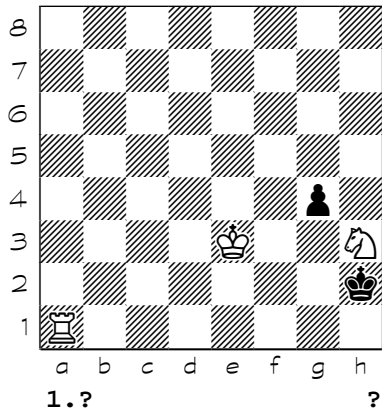


7504

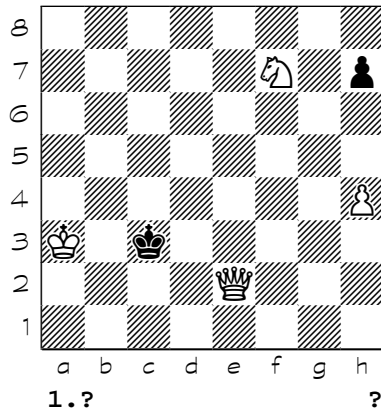


Chess diagrams

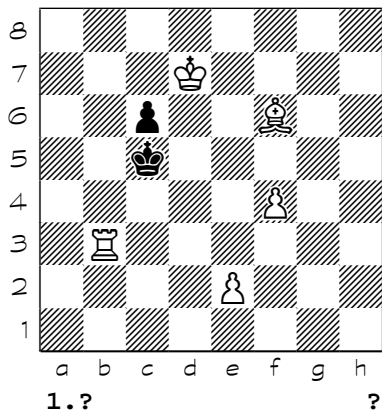
7505



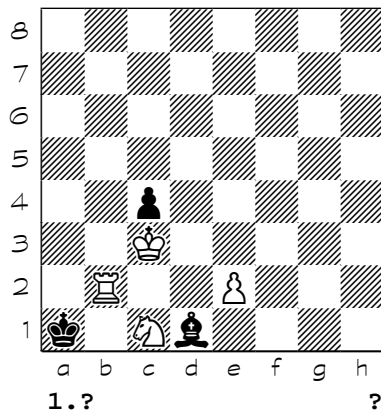
7506



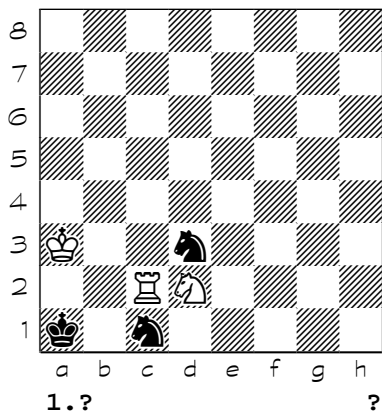
7507



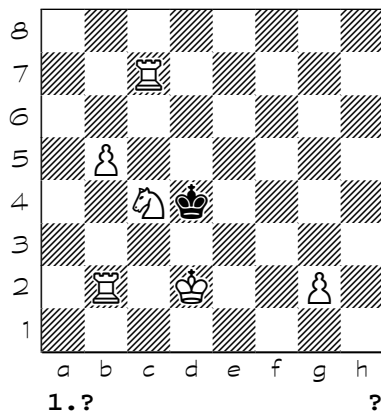
7508



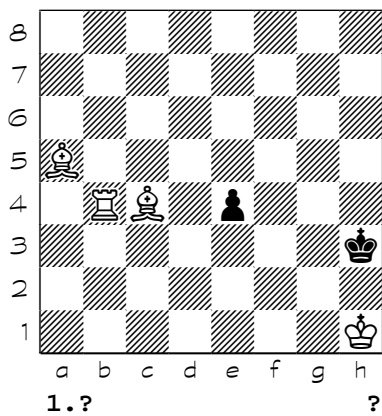
7509



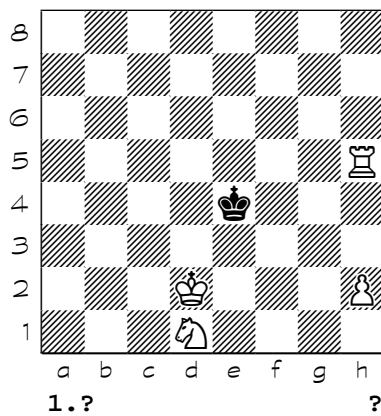
7510



7511

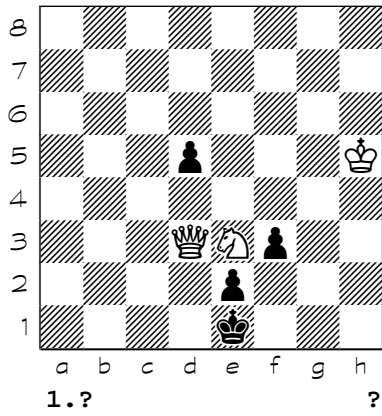


7512



Chess diagrams

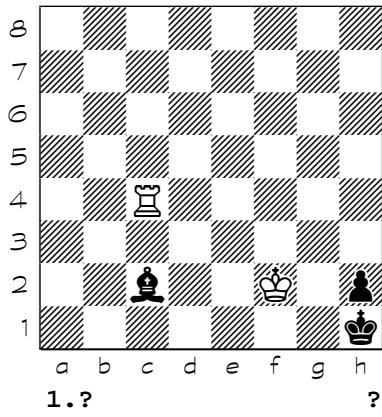
7513



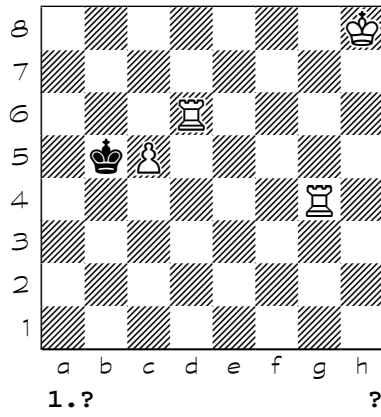
7514



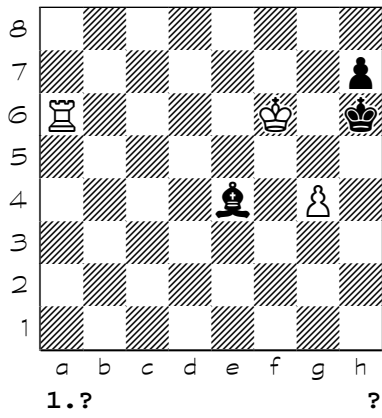
7515



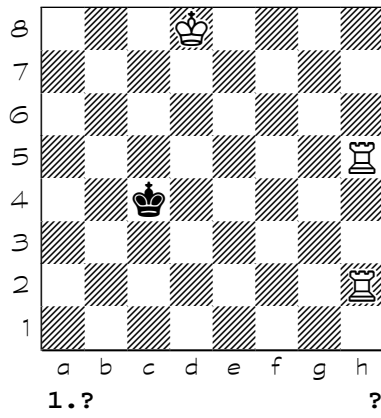
7516



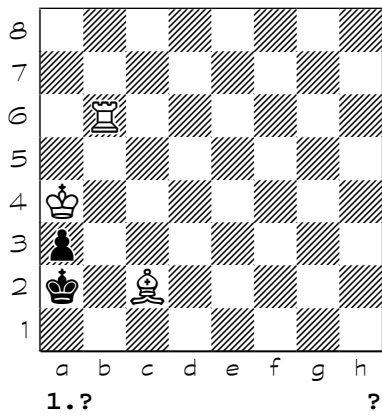
7517



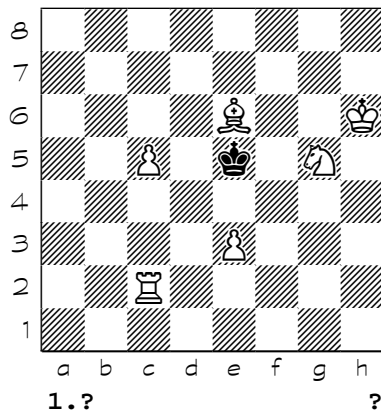
7518



7519

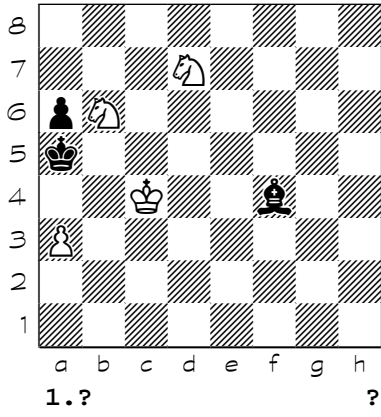


7520

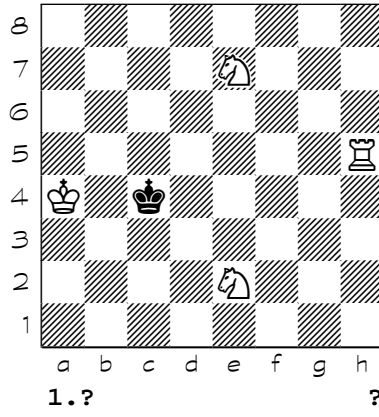


Chess diagrams

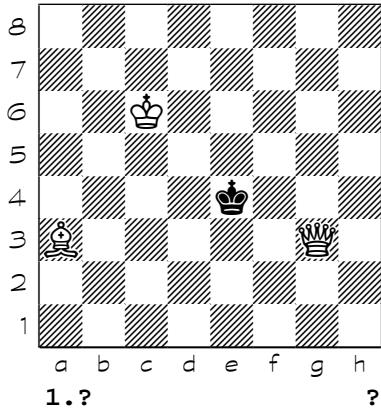
7521



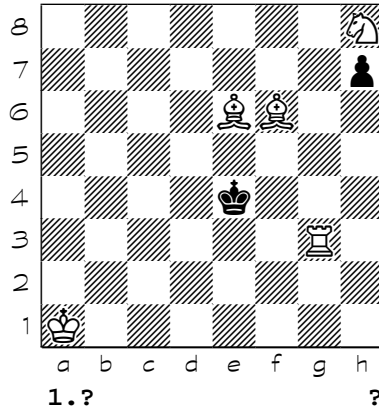
7522



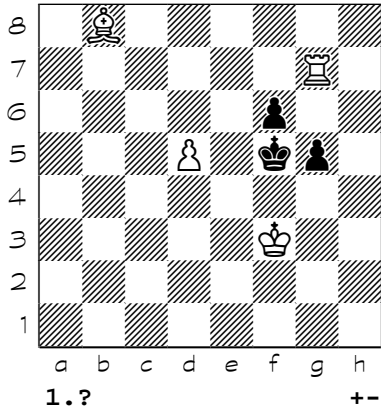
7523



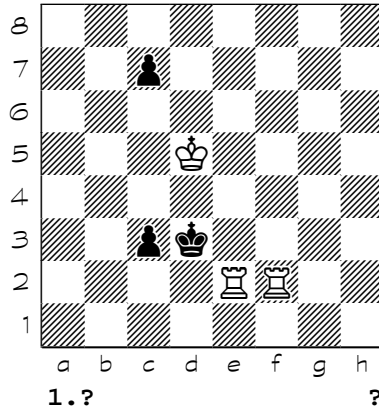
7524



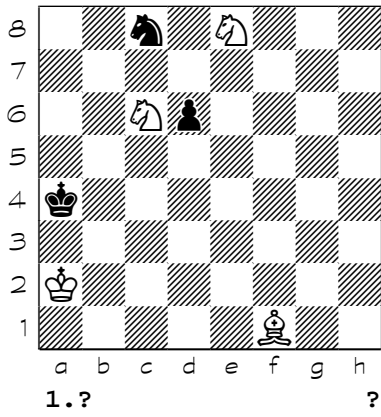
7525



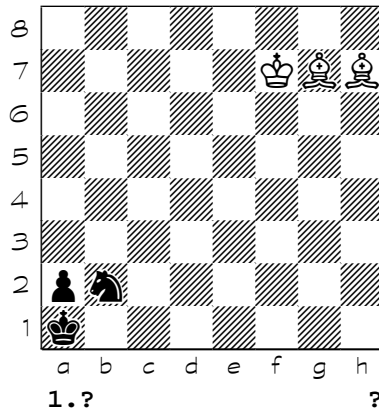
7526



7527

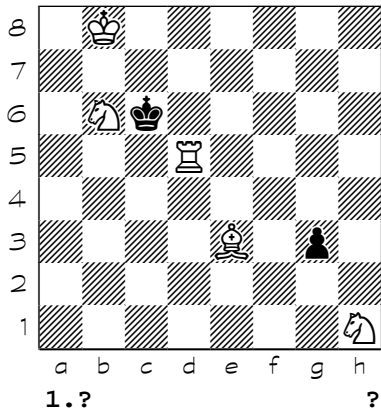


7528

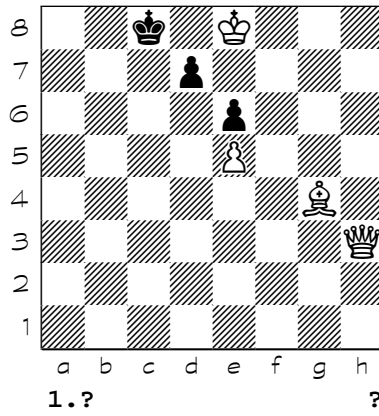


Chess diagrams

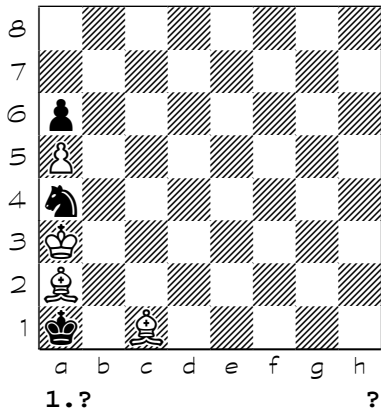
7529



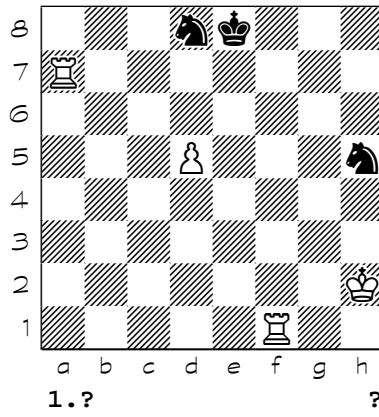
7530



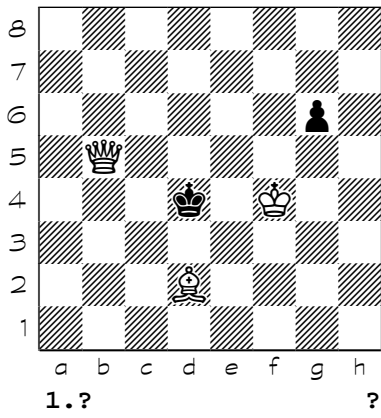
7531



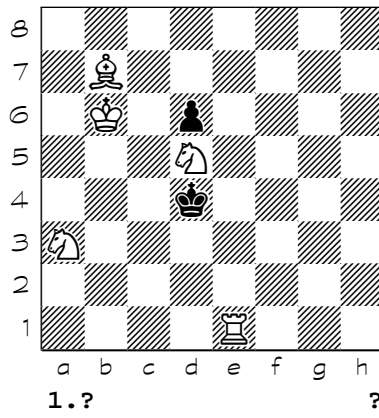
7532



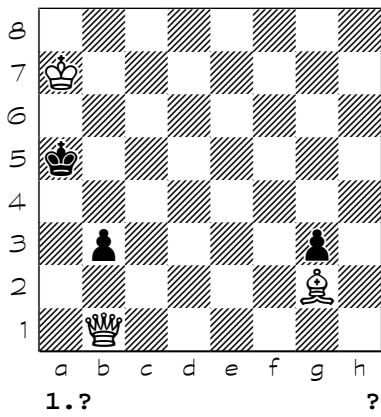
7533



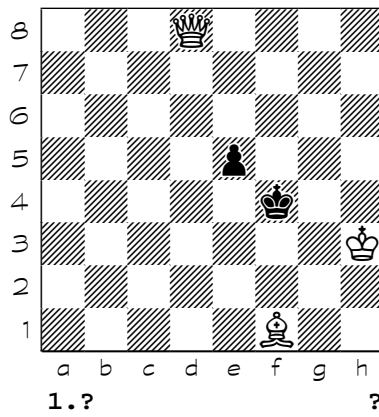
7534



7535

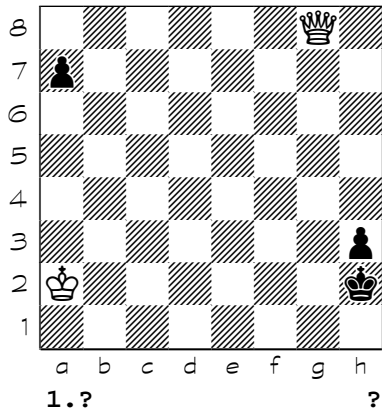


7536

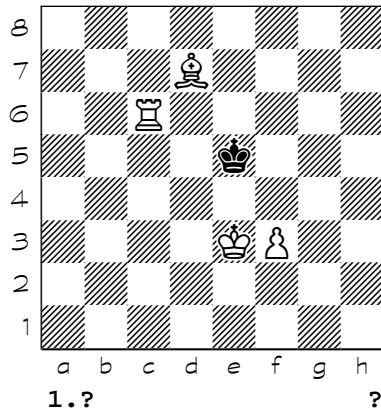


Chess diagrams

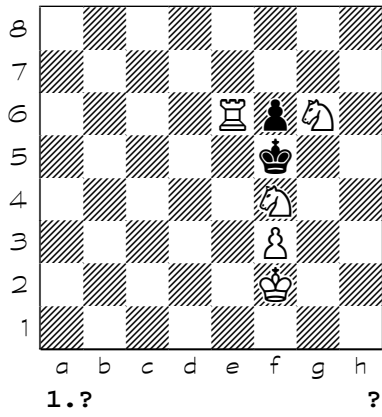
7537



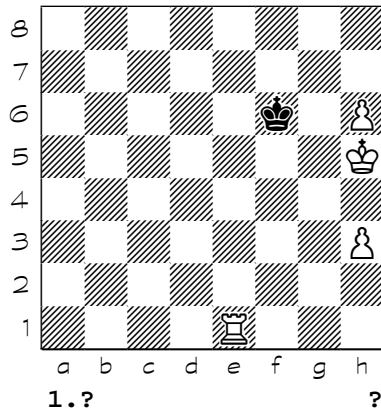
7538



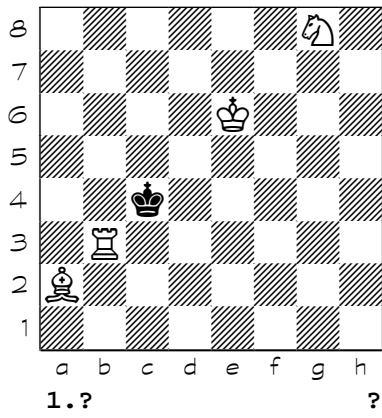
7539



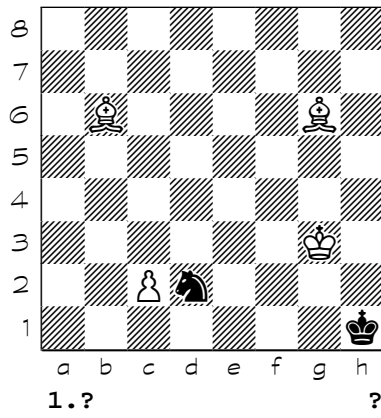
7540



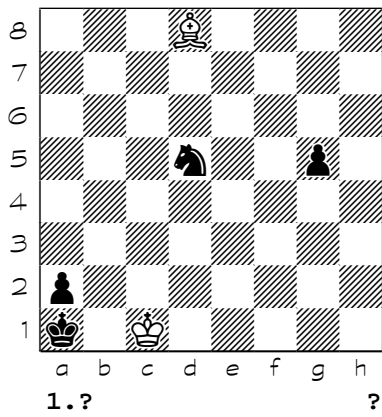
7541



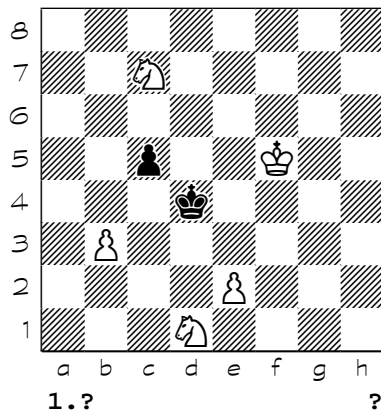
7542



7543

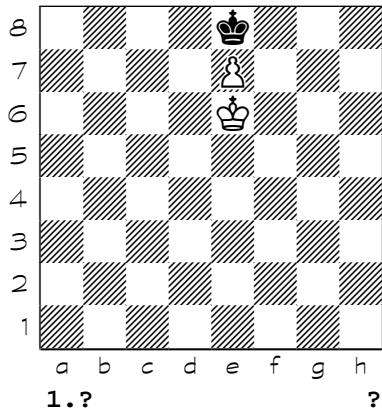


7544

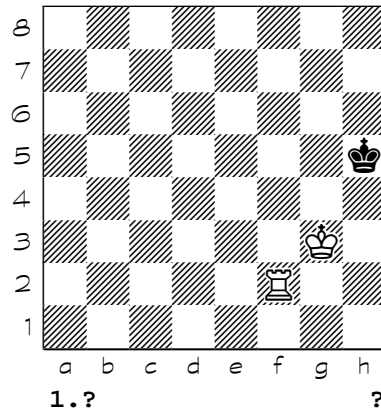


Chess diagrams

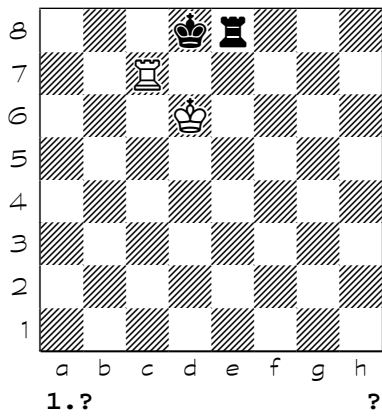
7545



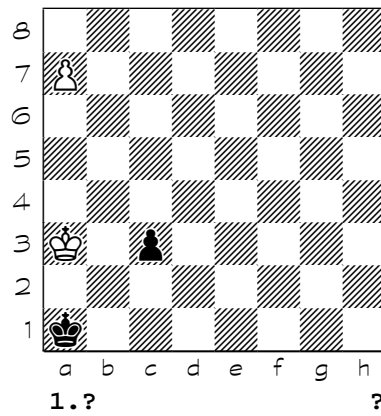
7546



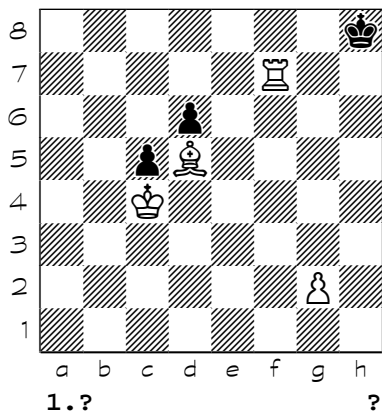
7547



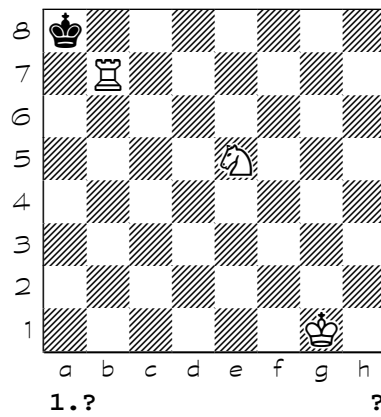
7548



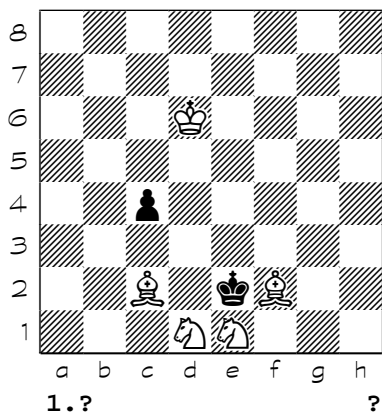
7549



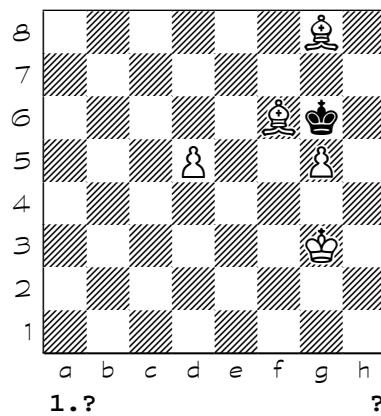
7550



7551

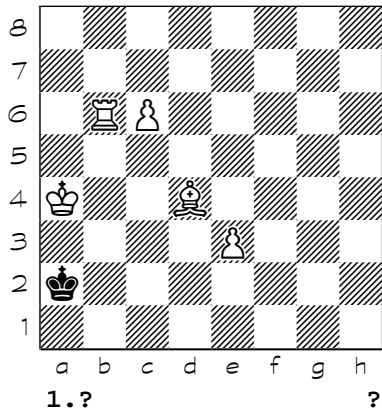


7552

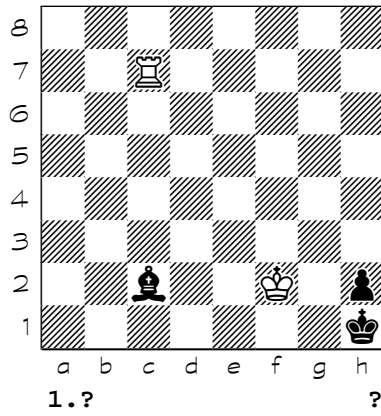


Chess diagrams

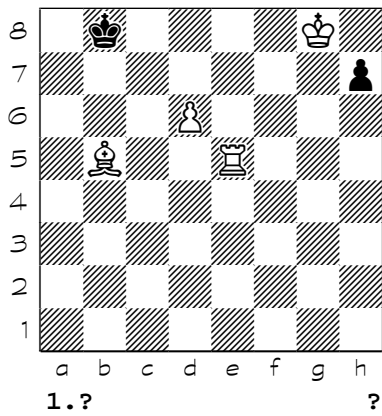
7553



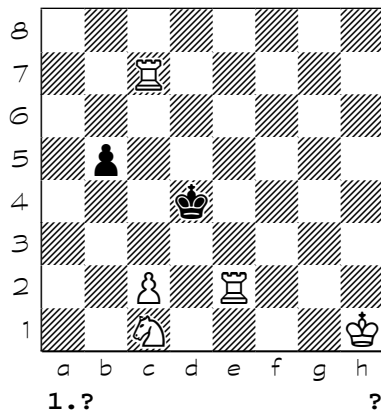
7554



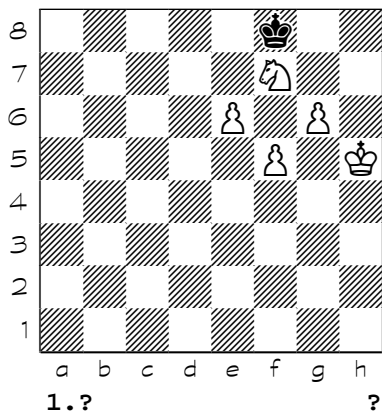
7555



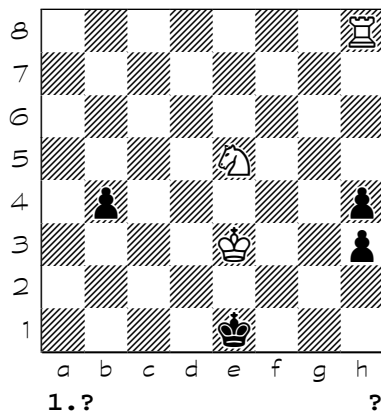
7556



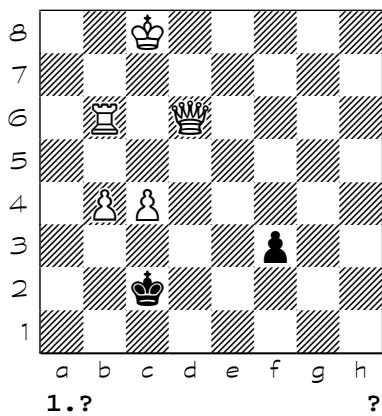
7557



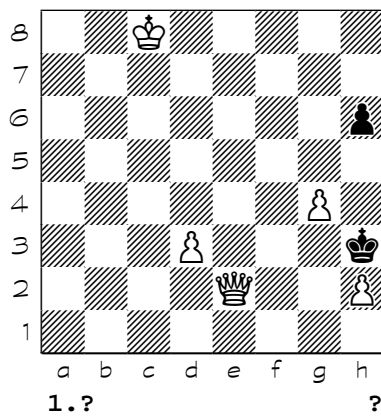
7558



7559

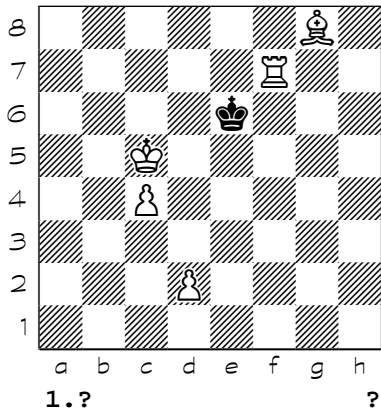


7560

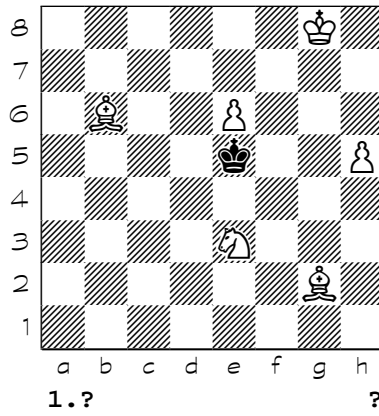


Chess diagrams

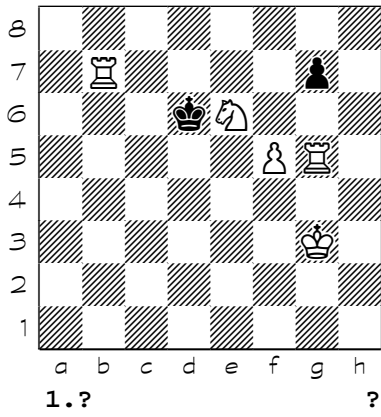
7561



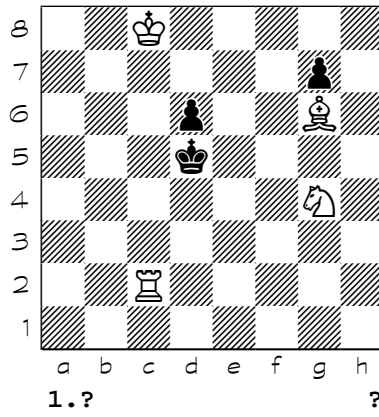
7562



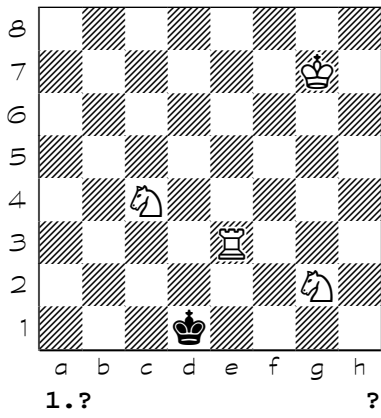
7563



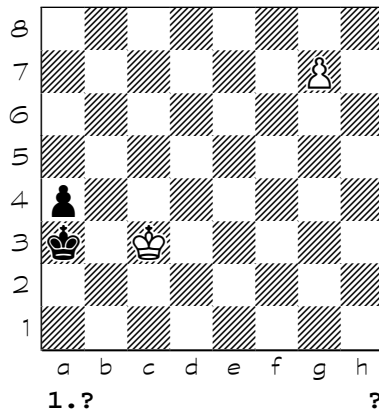
7564



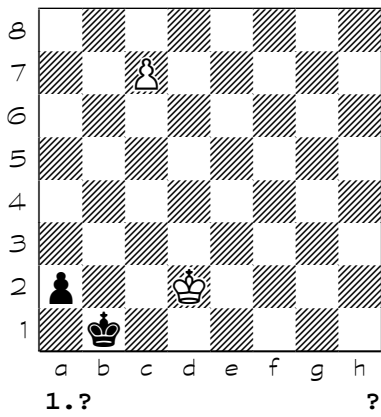
7565



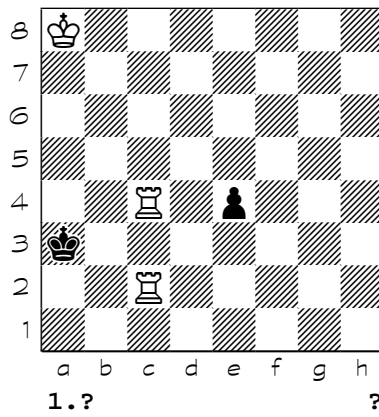
7566



7567

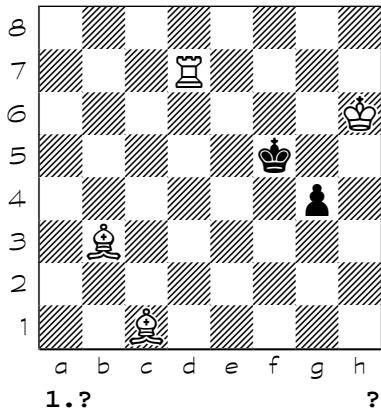


7568

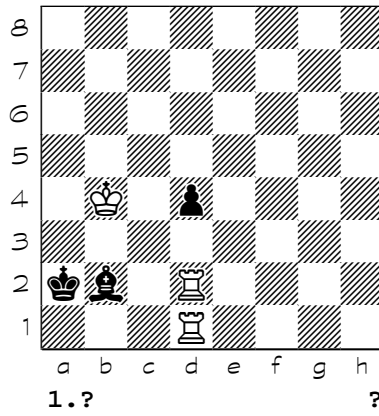


Chess diagrams

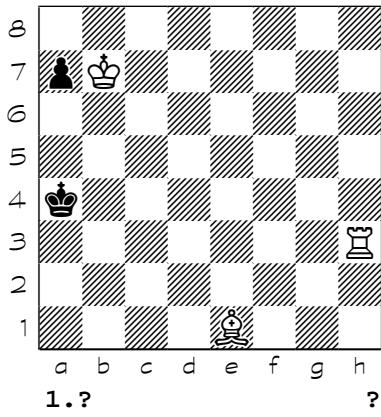
7569



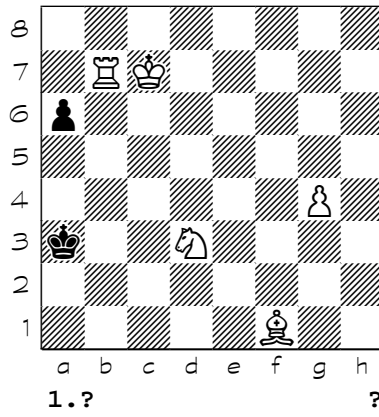
7570



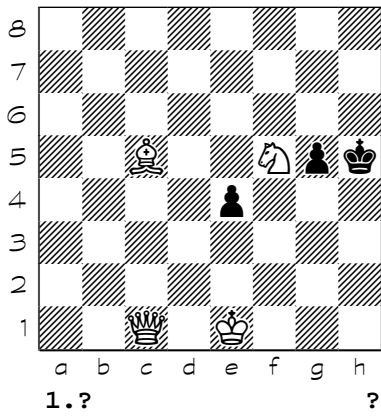
7571



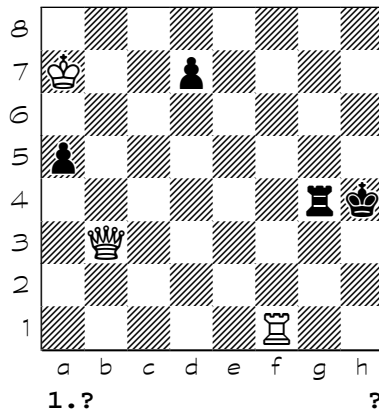
7572



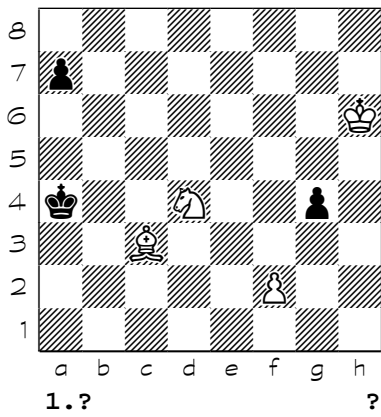
7573



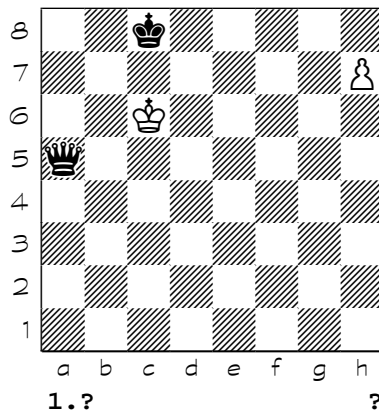
7574



7575

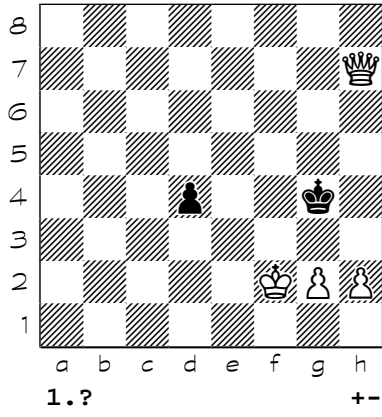


7576

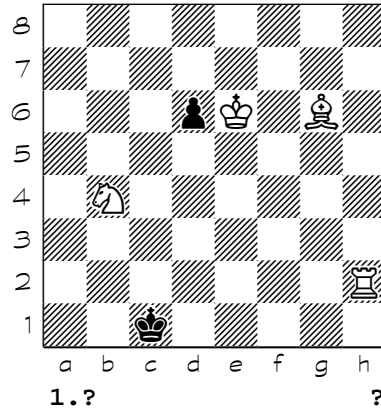


Chess diagrams

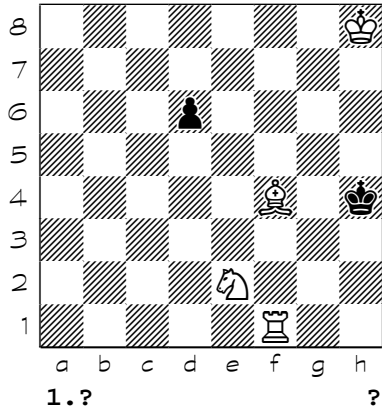
7577



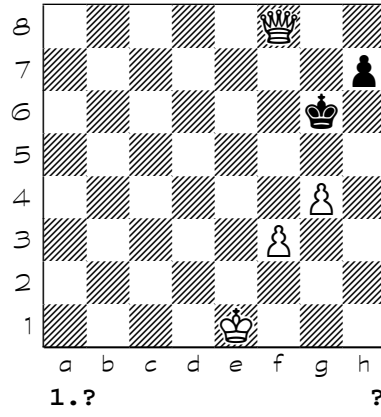
7578



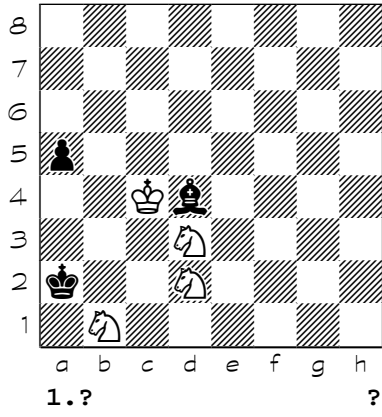
7579



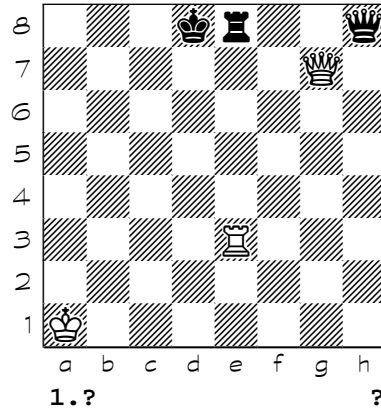
7580



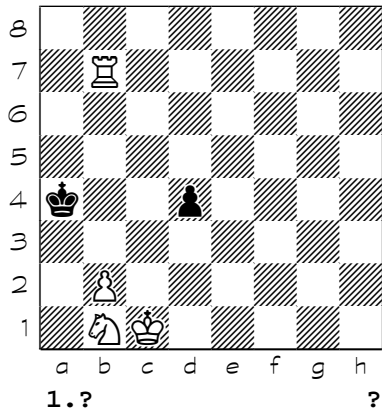
7581



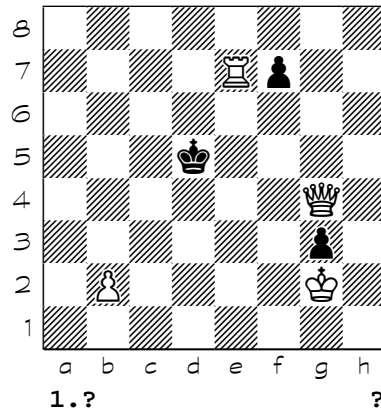
7582



7583

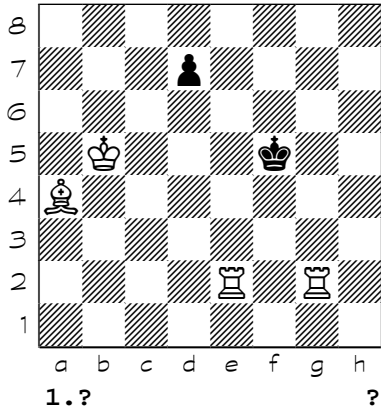


7584

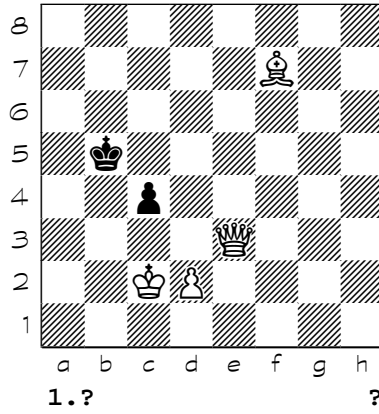


Chess diagrams

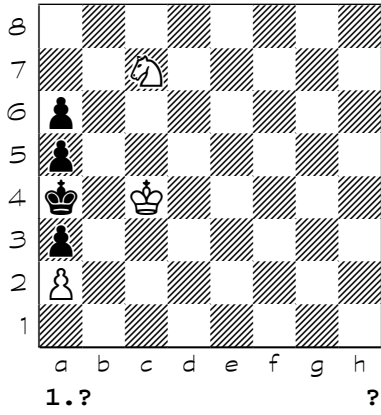
7585



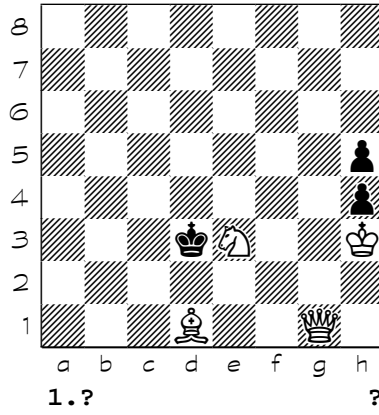
7586



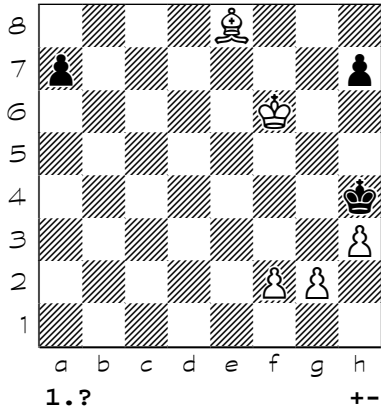
7587



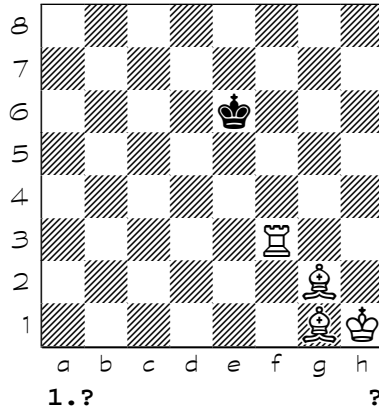
7588



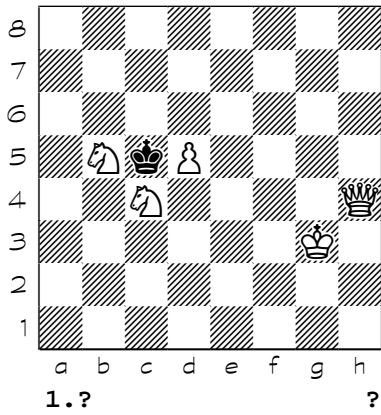
7589



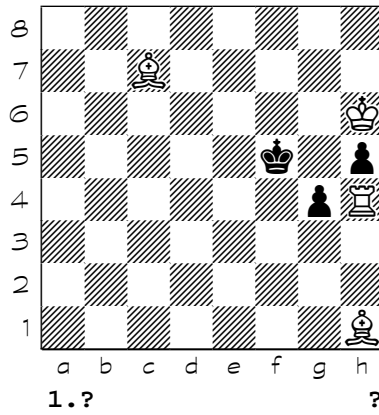
7590



7591

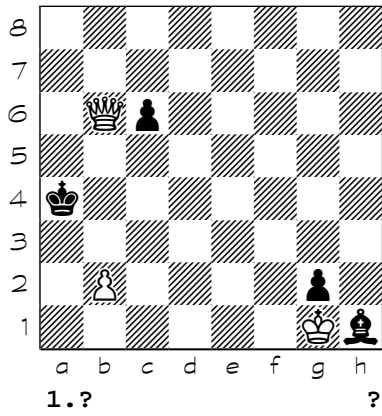


7592

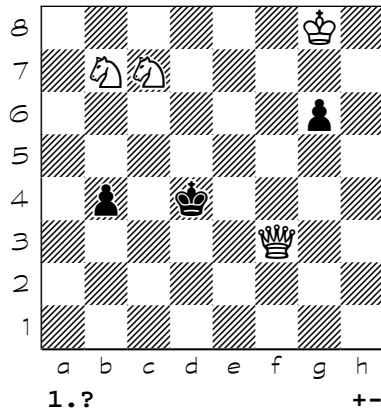


Chess diagrams

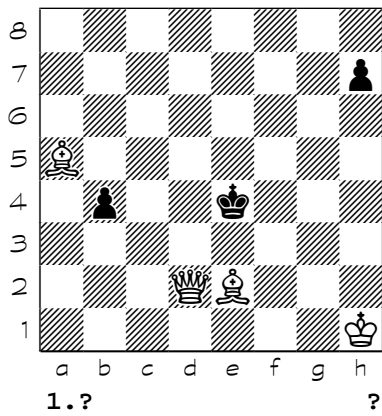
7593



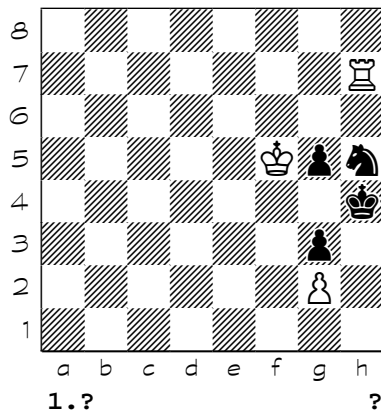
7594



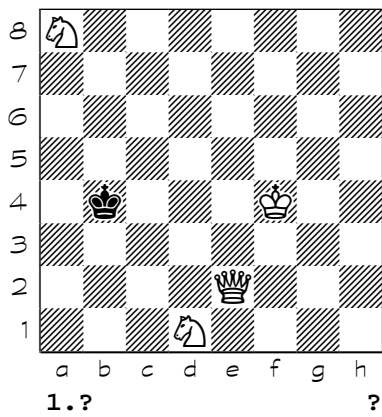
7595



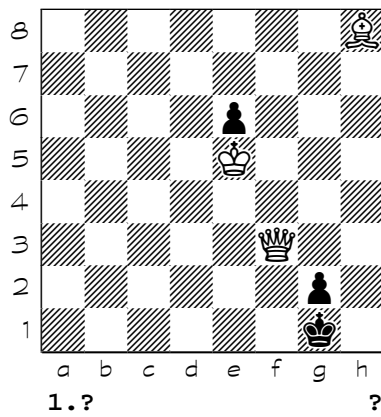
7596



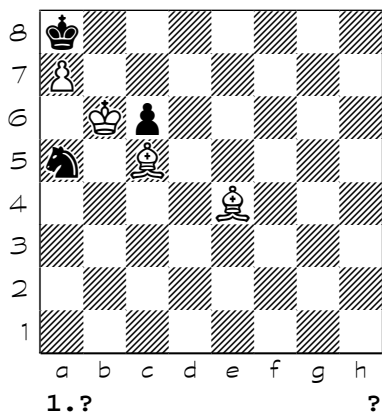
7597



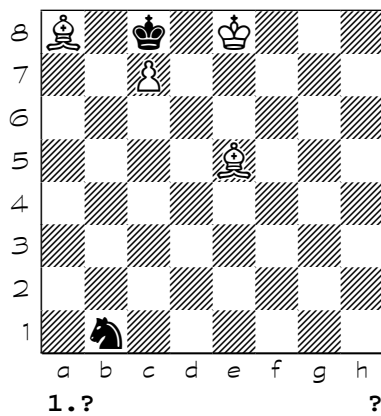
7598



7599



7600



(7401) 1. Bc6 Ka5 (1... Ka3 2. Bxb5 Ka2 3. Rh1 Ka3 4. Ra1#) 2. Kb3 Ka6 3. Rh8 Ka7 4. Ra8#
(7402) {#4} 1. Bb2 Kg8 (1... Kh7 2. Qh4+ Kg8 3. Re8+ Kf7 4. Qh5#) (1... Kf7 2. Qd7+ Kg6 3. Qe8+ Kh6 4. Rh5#) (1... Kg6 2. Qg4+ Kf7 3. Qh5+ Kf8 4. Re8#) 2. Qd8+ Kh7 3. Rh5+ Kg6 4. Qe8#
(7403) 1. Nf1 Kf5 (1... Kg4 2. Be6+ Kf3 3. Bh3 c5 4. Qe3#) (1... Kf3 2. Qe3+ Kg2 (2... Kg4 3. Bg6 c5 4. Qg3#) 3. Qg3+ Kxf1 4. Bc4#) 2. Bg6+ Kxg6 3. Ng3 c5 4. Qg7#
(7404) 1. Bb5 Kxh4 (1... Kf4 2. Kh2 Kf5 3. Bd7 Kf4 4. Re4#) 2. Rg6 Kh5 3. Be8 Kh4 4. Rg4#
(7405) 1. Nxd8 Kxd8 (1... Kxe8 2. Qd6 h6 3. Qc7 Kf8 4. Qf7#) (1... Kd7 2. Nc6 (2. Qxh7+ Kxe8 3. Qc7 Kf8 4. Qf7#) 2... Kxe8 3. Qg7 h6 4. Qe7#) 2. Qe6 h6 3. Qf7 Kc8 4. Qc7#
(7406) 1. b4 Ba3 (1... Bxd4 2. Nc4 Be3 (2... Bb6 3. Nd2 Bd4 4. Nb3#) 3. Na5 Bd2 4. Nb3#) 2. Nd3 Bb2 3. Nc5 Bc1 4. Nb3#
(7407) 1. Nd5 Nab6 (1... Nc7 2. Nf4 Na6+ 3. Kxc8 Nc5 4. g3#) 2. Nf4 Nd7+ 3. Kc7 Nf6 4. g3#
(7408) 1. Bc5 c6 2. Ba3 c5 3. Bb4 cxb4 4. c5 b3 5. c6 b2 6. c7 b1=Q 7. c8=Q#
(7409) *
(7410) 1. Qb5 Ka2 2. Qa4+ Kb1 3. Qxb3 Kc1 4. Qd1#
(7411) 1. Qb8 Ka5 (1... Ka3 2. Qd6+ Ka4 3. Qb6 Ka3 4. Qa5#) 2. Qb7 Ka4 3. Qb6 Ka3 4. Qa5# {jiaodee H.Kamczyk 1972}
(7412) 1. Kd2 Ka1 2. Qa8+ Kb1 3. Kd3 Kc1 4. Qh1#
(7413) 1. Qa6+ Ba4 2. Qc4 Bb3 3. Qd3 Ka4 4. Qa6#
(7414) 1. Rh3 Bg1 2. Rd3 Be3 3. Rd1+ Bc1 4. Rxc1#
(7415) 1. Nd3 Kd4 2. Ne1 Ke4 3. Bd3+ Kd4 4. Ke7 Ke5 5. Nf3#
(7416) 1. e4 Bb6 2. Nd3 Be3 3. e5 Bg5 4. Nc5 Bf4 5. Nb3#
(7417) 1. h8=B Kb8 2. Kxb6 Ka8 3. Bb7+ Kb8 4. Be5#
(7418) 1. Rxa7 Kc8 2. Rb7 Kd8 3. a7 Kc8 4. a8=Q#
(7419) 1. Na4 Kxa4 (1... Kc4 2. Rd6+ Kb5 3. Rb6+ Kxa4 4. Bxb3#) 2. Bh7 Kb4 3. Bd3 a4 4. Rb5#
(7420) 1. Qb7 Nb5 2. Qe4+ Nd4 3. Qb1 Nb3 4. Qxb3#
(7421) 1. Kf6 Rf5+ (1... Rb6+ 2. Kf7 Rb7+ 3. Qxb7 Kh7 4. Qh1#) 2. Kxf5 Kh7 3. Kf6 Kh8 4. Qg7#
(7422) 1. Rb4 Ka2 2. Bb2 Kb1 3. Nb5 Ka2 (3... Kc2 4. Na3#) 4. Nc3#
(7423) 1. h8=R Nd1 2. Rg8 Ne3+ (2... Nc3 3. Kxc3 Kb1 4. Rg1#) (2... Nf2 3. Rg1+ Nd1 4. Rxd1#) 3. Kb3 Ng4 4. Rxc4 Kb1 5. Rg1#
(7424) 1. Re1 Rc8 (1... Ra8 2. Rxa8+ Kg7 3. Ra2 Kf6 4. Rf2+ Kg5 5. Rg1+ Kh4 6. Rh2#) 2. Rh2+ Kg7 3. Rg2+ Kf6 4. Rf2+ Kg5 5. Rg1+ Kh4 6. Rh2#
(7425) 1. Kc5 Ke5 2. Rf7 Ke6 3. Bd5+ Ke5 4. Rf5#
(7426) 1. Nef2 Bf4 2. Ng4 Bd6 (2... Bd2 3. Ne5 Be3 4. Nf3#) 3. Ne3 Be5 4. Ng2#
(7427) 1. Qc5 b2 (1... Kb2 2. Qa5 Kc1 3. Qc3+ Kd1 4. Bh5#) 2. Bf7+ Ka1 3. Qd4 Kb1 4. Qd1#
(7428) 1. Nd6 Kd5 2. Ne4 Ke5 3. Nf6 Kf5 4. Ng4 Kg5 5. Nh6 Kh5 6. Nf7 Kh4 7. Rh6#
(7429) {#4} 1. Rf3 e4 (1... Kc5 2. Rd3 Kb4 3. Na6+ Ka5 4. Rd5#) 2. Rf5 Ke7 3. Nc8+ Kd8 4. Rd5#
(7430) 1. Rd2 Bc7 (1... Bd6 2. Rxd6 Nc7 3. Rd8+ Ne8 4. Rxe8#) 2. Ra2 Bb8 3. Rxa8 Kg8 4. Rxb8#
(7431) 1. Qd4 e3 (1... h2 2. Rg2+ Ka3 3. Qd5 b3 4. Qa5#) (1... Kb3 2. Rb1+ Kc2 3. Rb2+ Kc1 4. Qd2#) 2. Qd3 b3 3. Qd4 b2 4. Qa4#
(7432) 1. Nd3 Bg3 2. Nb4 Be1 3. Nd5 Ba5 4. c7 Bb6 (4... Bxc7 5. Ndxc7#) 5. Nxb6#
(7433) 1. Kc7 a3 2. Ba4 a2 3. Kc6 a1=Q 4. Bb5#
(7434) 1. Bc7 Kd4 2. Bd6 Ke4 3. Bh2 Kd4 4. Bg1+ Ke4 5. Kf2 Kd4 6. Kf3#
(7435) 1. Kh4 Kh7 2. Kxh5 Kh8 3. Kg6 Kg8 4. Qa8#
(7436) 1. a4 c4+ 2. Ka3 d3 3. a5 c3 4. Ncb3#
(7437) 1. Kg2 ({iia.dao.} 1. Rf8 Kh5 2. Ne5 Kh6 3. Rg8 g4 4. Nf7+ Kh5 5. Rh8#) 1... Kh5 (1... e5 2. Ra1 Kh5 3. Rh1+ Kg4 4. Kh2 Kh5 5. Kg3#) 2. Rh8+ Kg4 3. Rh1 e5 4. Kh2 Kh5 5. Kg3#
(7438) 1. Kg2 Kh5 (1... e5 2. Ra1 Kh5 3. Rh1+ Kg4 4. Kh2 Kh5 5. Kg3#) 2. Rh3+ Kg4 3. Rh1 e5 4. Kh2 Kh5 5. Kg3# {iioaeieiaaia oaeaa Journal de Geniwe 1935 A.Cheron}
(7439) *
(7440) 1. Qf4 b4 2. Qf1 b5 3. Qf6 b6 4. Qa1#
(7441) 1. e4 b5 2. Nb4 Ne3 3. e5 Nc4 4. Nc2#
(7442) 1. Be5 Bxe5 2. Rf1+ Kb2 3. Raa1 Bd4 4. Rfb1#
(7443) 1. Qe4+ Rg2 2. Qb1+ Rg1 3. Qb7+ Rg2 4. Qe4 Kg1 5. Qe1#
(7444) 1. Be8 Bxh8 2. Qf4+ Kg7 {duals} 3. Kd5 (3. Kb3) (3. Bh5) 3... h5 4. Qf7+ Kh6 5. Qg6#

(7445) {#4} 1. d7 Nc6+ (1... Kb7 2. d8=N+ Kb8 3. Kd7 Ka8 4. Rc8#) 2. Rxc6 Kb7 3. Kd6 Kb8 4. Rb6#

(7446) 1. Ke2 Ka4 (1... Ka2 2. Kd3 a5 3. Kc2 Ka3 4. Qb3#) 2. Kd3 a6 (2... Ka5 3. Kc4 Ka6 4. Qb5#) 3. Kc3 a5 4. Qb3#

(7447) 1. Rf7 Bb7 2. Rf5 Bd5 3. Rxd5 Ka2 4. Ra5#

(7448) 1. Be8 Nf7 2. Ba4 Ne5 3. Bd1 Nc4 4. Bxf3#

(7449) 1. Rh4 Kc5 (1... Kc6 2. Re4 Kc5 3. Ba6 Kd6 4. Bb6 Kc6 5. Re6#) (1... Ke5 2. Re4+ Kd6 3. Ba6 Kc6 4. Re6+ Kc5 5. Bb6#) 2. Re4 Kc6 3. Ba6 Kc5 4. Bc7 Kc6 5. Rc4#

(7450) 1. e7 Bxe7 2. h6 Bf6 3. h7 Ng5 4. Qg8#

(7451) 1. Bh6 e4 2. Bc1 e3 3. f3 e2 4. Nh5 e1=Q 5. Nf4#

(7452) 1. Bd8 Kc5 (1... Ke5 2. Rf6 Kd5 3. Bb6 Ke5 4. Bd4+ Kd5 5. e4#) 2. Rb6 Kd5 3. Bf6 Kc5 4. Bd4+ Kd5 5. e4#

(7453) 1. Be5 ({iiii i.d.} 1. Be4 c6 2. Kb7 Kb5 3. Bd6 c5 4. Bc6+ Ka5 5. Bc7#) (1. Bf3) 1... c6 2. Kb7 Kb5 3. Bd6 c5 4. Bc6+ Ka5 5. Bc7#

(7454) 1. Qf2 Nd7+ (1... Ne6+ 2. Kc4 Bd5+ 3. Kc3 Bg2 4. Qg1#) 2. Kb5 Bc6+ 3. Ka5 Bg2 4. Qg1#

(7455) 1. d7 Bxd7 (1... Nc6 2. Qxc6+ Kb8 3. d8=Q+ Bc8 4. Qdc7#) 2. a6 Bc6 3. a7 Bd5 4. Qb8#

(7456) 1. f4 Bg7 2. Nf3 Bc3 3. f5 Bd4 4. Nd2 Bc3 5. Nb3#

(7457) {#4} 1. Nf6 Kxf6 (1... Kf4 2. Kf7 Ke5 3. Rd5+ Kf4 4. Rf5#) 2. f4 Kg6 3. Rh3 Kf6 4. Rh6#

(7458) {#4} 1. Ba3 b4 2. Kc7 bxa3 3. Kc8 a2 4. Nc7#

(7459) *

(7460) 1. Kf6 g4 (1... Kd8 2. Rc1 Kd7 3. Nb6+ Kd6 (3... Kd8 4. Rc8#) 4. e5#) (1... Kd7 2. Rc1 g4 3. Nb6+ Kd6 4. e5#) 2. Ke6 g3 3. hxg3 Kd8 4. Rb8#

(7461) 1. Rd1 Bd4 2. Rc7 Bf6 3. Rdd7 Be5 4. Rd8#

(7462) 1. Qf5 Qb7 2. Qc5+ Ka8 3. Qxa5+ Qa7 4. Qd5+ Qb7 5. Qc4 Ka7 6. Qd4+ Ka8 7. Qa4+ Qa7 8. Qe8+ Kb7 9. Qc6+ Kc8 10. Bb6+ Kb8 11. Bxa7+ Kxa7 12. Kc7 g4 13. Qa4# (13. Qb7#)

(7463) {aeie} 1. Qd4 Kb1 2. Qd3+ Ka1 3. Qc3 Kb1 4. Qc1#

(7464) 1. Rg4 (1. Re1 Kg8 2. Rxe5 Kh7 3. Re8 Kh6 4. Rh8#) 1... e4 2. Rxe4 Kg8 3. Rh4 Kf8 4. Rh8#

(7465) 1. Re1 Ba2 2. Re5 d5 3. Kb6 Bc4 4. Re8#

(7466) 1. Nc5 Ke3 (1... Ke1 2. Rde7+ Kd1 3. Rf2 Kc1 4. Re1#) 2. Rde7+ Kd2 (2... Kd4 3. Rf5 Kc4 4. Re4#) 3. Rf1 Kc2 4. Re2#

(7467) 1. Qb3 d5 (1... d6 2. Bxd6 Ka5 3. Qb7 a6 4. Qb4#) 2. Bc7 d4 3. Qd5 d3 4. Qc6#

(7468) 1. Rf5 ({iia.dao.} 1. Rf7 Nf4 2. Rxf4 Kxa2 3. Ra4#) 1... Ng7 2. Re5 Ne6 3. Rxe6 Kxa2 4. Ra6#

(7469) 1. Rc1 Kd2 (1... Ke3 2. Rb2 Kd4 3. Rb3 Kd5 4. Rd3#) (1... Ke2 2. Rb2+ Ke3 3. Rd1 Kf3 4. Rd3#) 2. Ke4 Kxc1 3. Kd3 Kd1 4. Rb1#

(7470) 1. Rd6 d4+ (1... Kb1 2. Rxd5 Kc1 3. Kb3 Kb1 4. Rd1#) 2. Rxd4 Ka1 3. Kb3 Kb1 4. Rd1#

(7471) {#4} 1. Rh2 e4+ (1... Kc1 2. Nb3+ Kb1 3. Kc3 e4 4. Rb2#) (1... Ke1 2. Nf3+ Kf1 3. Ke3 e4 4. Rf2#) 2. Nxe4 Kc1 3. Nc3 d5 4. Rc2#

(7472) {#4} 1. Ke1 Ka1 (1... Kc1 2. Nec3 bxc3 3. Na3 c2 4. Rxc2#) 2. Na3 bxa3 3. Nc3 a2 4. Rxa2#

(7473) 1. Qe5+ Kc4 (1... Kb4 2. Qd5 Ka4 3. Qb7 Ka5 4. Ra3#) (1... Kc6 2. Rc3+ Kb6 3. Qb8+ Ka5 4. Ra3#) (1... Kb6 2. Rc3 Ka6 3. Qb8 Ka5 4. Ra3#) 2. Rc3+ Kb4 3. Qc5+ Ka4 4. Ra3#

(7474) 1. Kd3 e4+ (1... Kd8 2. Ke4 Ke8 3. Kxe5 Kd8 4. Kf6 Ke8 5. Bc7 Kf8 6. Bd7 Kg8 7. Kg6 Kf8 8. Bd6+ Kg8 9. Be6+ Kh8 10. Be5#) 2. Kxe4 Kd8 3. Kd5 Ke8 4. Kc6 Kd8 5. Bf7 Kc8 6. Be7 Kb8 7. Kb6 Kc8 8. Be6+ Kb8 9. Bd6+ Ka8 10. Bd5#

(7475) 1. Rg8 Kh5 2. Kg7 Kxh4 3. Kxf6 Kh5 4. Rh8#

(7476) {#4} 1. Kd1 Kg4 2. f3+ Kh3 (2... Kf4 3. Ke1 Ke3 4. Qe4#) 3. Qd2 Kh4 4. Qh6#

(7477) {#4} 1. Kd1 Kf4 (1... g3 2. fxg3 Kh5 3. Qf6 Kg4 4. Qg6#) 2. Qd5 g3 3. f3 Ke3 4. Qd2#

(7478) 1. Bh6 Kh8 (1... Kh7 2. Kf7 Kh8 3. Bg7+ Kh7 4. Nf6#) 2. Kg6 Kg8 3. Nf6+ Kh8 4. Bg7#

(7479) 1. Rf1 Nf4 2. Rcf2 Ng2 3. Bg3 Nf4 4. Rh2#

(7480) 1. Ne4 Bc4 2. Nc3 Ba6 3. Ncd5 Bb5 4. Bc7#

(7481) 1. Bb6 Bc2 2. Be3 Bd4 3. Bg5 Bh8 4. Bf6 Bg7 5. Nxc7#

(7482) 1. Kc6 Kb8 2. e7 Ka8 (2... Ka7 3. e8=Q Ka6 4. Qa8#) 3. Kb6 Kb8 4. e8=Q#

(7483) 1. g3 Kh7 2. Kf7 Kh6 3. g8=Q Kh5 4. Qg6#

(7484) 1. Bf8 Nb2 2. Kc2 Nc4 3. Bg7+ Nb2 4. Bxb2# {Sveriges Schachklub iiceoey iiaoidaia S.Limbach"Sah" 1950 A.Aaaeia 1993,A.Adei 1994}

(7485) 1. Rg3 Kd5 (1... Ke4 2. Rc4+ Kd5 3. Rgg4 g5 4. Rgd4#) (1... g5 2. Kf5 g4 3. Rcc3 f6 4. Rgd3#) 2. Rg4 g5 3. Rc2 (3. Rc8 Kd6 4. Rd4#) 3... Kd6 4. Rd4#

(7486) 1. Rf5 Ng7 2. Re5 Ne6 3. Rxe6 Kxa2 4. Ra6#

(7487) 1. Rh3 Ng7 2. Ba3 Ne6 3. Bb2+ Ng7 4. Rc3 Ne6 5. Rc8#

(7488) {#4} 1. Ke5 Ka5 (1... Kc5 2. Qd4+ Kc6 3. Qa7 b4 4. Bd7#) 2. Qa7+ Kb4 3. Bd1 Kc3 4. Qd4#

(7489) 1. Bd2 Kd5 (1... Kc5 2. Rd7 Kb5 3. Bb3 Kb6 4. Bb4 Kb5 5. Rb7#) (1... Ke5 2. Rb6 Kd4 3. Nd7 Kd5 4. Bd3 Kd4 5. Rd6#) 2. Rb6 Kc5 3. Nd7+ Kc4 4. Be4 Kd4 5. Rb4#

(7490) {#4} 1. Nb6 Kf8 2. Ng5 Ke8 3. Bf7+ Kf8 (3... Kd8 4. Ne6#) 4. Nd7# {-cPf6}

(7491) 1. Bd4 d5 (1... d6 2. Kd2 d5 3. Kc3 Ka1 4. Kb3#) 2. Ba4 Kb1 3. Bb3 a2 4. Bc2#

(7492) 1. Ng3 Bc4 2. Nge4 Bd3 3. Nc5 Bc4 4. N5a4 Bb5 5. Bb2#

(7493) 1. Rb7 Kf5 (1... Kd5 2. Nd8 Kc5 (2... Kd6 3. Bd4 Kd5 4. Rd7#) 3. Be5 Kd5 4. Rb5#) 2. Rb6 Kf4 3. Kf2 Kf5 4. Rf6#

(7494) 1. Kg7 Kb8 (1... Kd8 2. Na7 Ke8 3. Ba4 Kd8 4. c7#) 2. Ne7 Ka8 3. Bd5 Kb8 4. c7#

(7495) 1. Nb5 Ka2 2. Ba3 Ka1 3. Bb2+ Ka2 4. Nc3#

(7496) 1. Qc3 Kd5 (1... Kf4 2. Kf6 Ke4 3. Ke6 Kf4 4. Qe5#) (1... Kf5 2. Qd4 Kg5 3. Qg4+ Kh6 4. Qh4# (4. Qg6#)) 2. Ke7 Ke4 3. Ke6 Kf4 4. Qe5#

(7497) 1. Kf7 Bxf6 2. gxf6 Ka3 3. Ke7 Ka4 4. f7 Ka5 5. f8=Q a6 6. Kd7 Ka4 7. Qb4#

(7498) *

(7499) 1. Nb4 Kf2 (1... Ke1 2. Qc1+ Kf2 3. Nd3+ Kg3 4. Qf4#) 2. Qf4+ Ke1 3. Nd3+ Kd1 4. Qc1#

(7500) {#4} 1. Nd5 Ke1 (1... f3 2. Nxe3+ Ke1 3. Qc2 f2 4. Qd1#) 2. Nxf4 Kd1 3. Nd3 e2 4. Qc1#

(7501) {#4} 1. Bc4 Ka5 (1... Ka3 2. b4 Ka4 3. Bd2 Ka3 4. Ra2#) 2. Be3 Kb4 3. Ra2 Kc3 4. Bd2#

(7502) 1. Ka2 Ka7 2. Ka3 Ka6 3. Ka4 Ka7 4. Ka5 Ka8 5. Kb6 Kb8 6. Qh8#

(7503) {#3} 1. Rf2 -- (1... c5 2. Qc4 b5 (2... b2 3. Kg2 b1=Q 4. Re2#) 3. Qd5 b4 4. Rf3#) 2. Rb2 Kd3 3. Kf2 c5 4. Rd2#

(7504) 1. Bh7 (1. Qe6 Kd4 2. Bh7 Kc5 3. f4 Kd4 4. Qe5#) 1... Kd5 2. Bb1 (2. f4 Kc5 3. Qe6 Kd4 4. Qe5#) 2... Kc5 3. Ba2 Kd5 4. Kxb4#

(7505) 1. Kf2 g3+ 2. Kf3 g2 3. Ng1 Kh1 4. Kg4 Kh2 5. Nf3#

(7506) 1. Ng5 h6 (1... h5 2. Nf7 Kd4 3. Kb4 Kd5 4. Qc4#) (1... Kd4 2. Kb4 Kd5 3. Qe6+ Kd4 4. Qe4#) 2. Ne6 h5 3. Qd1 Kc4 4. Qb3#

(7507) 1. Rb2 Kd5 (1... Kc4 2. Kd6 c5 3. Ke5 Kc3 4. Kd5#) 2. Rb4 Kc5 3. Be7+ Kd5 4. e4#

(7508) 1. Rd2 Bb3 (1... Ba4 2. Ra2+ Kb1 3. Rxa4 Kxc1 4. Ra1#) 2. Nxb3+ cxb3 3. Kxb3 Kb1 4. Rd1#

(7509) 1. Rc3 Na2 (1... Ne2 2. Rb3 Nb2 3. Rxb2 Nc3 4. Nb3#) 2. Rb3 Nc3 3. Rxc3 Nc1 4. Rxc1#

(7510) 1. Rc5 Kxc5 (1... Ke4 2. Ne3 Kf4 (2... Kd4 3. Rd5+ (3. Rf5 Ke4 4. Rb4#) 3... Ke4 4. Rb4#) 3. Nf1 Ke4 4. Rb4#) 2. Kc3 Kd5 3. Re2 Kc5 4. Re5#

(7511) 1. Be2 Kg3 (1... Kh4 2. Bd8+ Kg3 3. Rxe4 Kf2 (3... Kh3 4. Re3#) 4. Bh4#) ({ aeoae(2.Ea4,En4,Edg1)} 1... e3 2. Rc4 Kg3 3. Be1+ Kh3 4. Rh4#) 2. Rxe4 Kf2 3. Bg4 Kg3 (3... Kf1 4. Rf4#) 4. Be1#

(7512) 1. Ne3 Kf3 (1... Kd4 2. Rd5+ Ke4 3. Ke2 Kf4 4. Kd3 Kf3 5. Rf5#) 2. Kd3 Kf2 3. Rg5 Ke1 4. Rg1+ Kf2 5. Rf1#

(7513) {#4} 1. Ng4 d4 (1... Kf1 2. Qxf3+ Ke1 3. Qxd5 Kf1 4. Qh1#) (1... f2 2. Qd4 f1=N 3. Qc3+ Kd1 4. Nf2#) 2. Qxd4 f2 3. Ne3 f1=Q 4. Nc2#

(7514) 1. Nd2 a5 (1... Ka3 2. Nc4+ Ka4 3. Ka2 a5 4. Nb2#) (1... Ka5 2. Nc4+ Ka4 3. Ka2 a5 4. Nb2#) 2. Ne4 Ka3 3. Nc3 a4 4. Nb1#

(7515) 1. Rc3 Bd1 2. Ra3 Bc2 3. Ra1+ Bb1 4. Rxb1#

(7516) 1. Rh6 Kxc5 (1... Ka5 2. Rc4 Kb5 3. Rc1 Ka4 4. Rb6 Ka3 5. Ra1#) 2. Rh5+ Kd6 3. Rg6+ Ke7 4. Rh7+ Kf8 5. Rg8#

(7517) 1. Ra2 Bg2 2. Ra5 Bd5 3. Rc5 Bf7 4. Rh5+ Bxh5 5. g5#

(7518) 1. R2h3 Kd4 2. R5h4+ Kd5 (2... Ke5 3. Ke7 Kf5 4. Rg3 Ke5 5. Rhg4) (2... Kc5 3. Kc7 Kb5 4. Ra3 Kc5 5. Ra5#) 3. Kd7 Kc5 4. Rb3 Kd5 5. Rb5#

(7519) 1. Bh7 Ka1 2. Kb3 a2 3. Rg6 Kb1 4. Rg1#

(7520) 1. Bd7 Kd5 (1... Kf6 2. Rf2+ Ke7 3. Rf7+ Kd8 4. Ne6#) 2. Bb5 Ke5 3. Rf2 Kd5 4. Rf5#

(7521) 1. a4 Be3 2. Kb3 Bxb6 3. Ne5 Bc5 4. Nc4#
(7522) 1. Rh3 Kc5 2. Rh6 Kc4 3. Rd6 Kc5 4. Rc6#
(7523) 1. Be1 Kf5 (1... Kd4 2. Qf3 Kc4 (2... Ke5 3. Bb2+ Ke6 4. Qf6#) 3. Bd2 Kd4 4. Qd5#) 2. Kd6 Kf6 3. Qg8 Kf5 4. Qe6#
(7524) 1. Nf7 Kf4 (1... h6 2. Nxb6 Kf4 3. Nf5 Ke4 4. Bg5 Ke5 5. Re3#) 2. Rd3 Ke4 3. Ne5 Kf4 4. Bd5 h5 5. Rf3#
(7525) {Mat 4. tahem.} 1. Bh2 g4+ 2. Ke3 g3 3. Rxc3 Ke5 4. Rg5# {mat/} 1-0
(7526) 1. Rc2 c6+ (1... c5 2. Kxc5 Ke3 (2... Ke4 3. Rxc3 Ke5 4. Re3#) 3. Kc4 Ke4 4. Rce2#) 2. Kc5 Ke3 3. Kc4 Ke4 4. Rce2#
(7527) 1. Nc7 Na7 2. Bb5+ Nxb5 3. Nd5 Nc3+ 4. Nxc3#
(7528) 1. Kf6 Nc4 2. Ke6+ Nb2 3. Ke5 Nc4+ 4. Kd5+ Nb2 5. Kd4 Nd1 6. Kc4+ Nb2+ 7. Kc3 Nd1+ 8. Kb3+ Nb2 9. Bxb2#
(7529) 1. Bg1 g2 2. Nf2 Kxb6 3. Nd3+ Ka6 4. Nb4#
(7530) 1. Qb3 Kc7 2. Qb4 d5 3. exd6+ Kc6 (3... Kc8 4. Bxe6#) 4. Bf3#
(7531) 1. Bd2 Nb2 2. Kb3 Na4 3. Be1 Nc5+ 4. Ka3 Na4 5. Bb4 Nb2 6. Kb3 Na4 7. Bd2 Nc5+ 8. Ka3 Na4 9. Bc1 Nb2 10. Bxb2#
(7532) 1. Rh7 Nf7 2. Rfxf7 Ng7 3. Rhxg7 Kd8 4. Rf8# (4. Rg8#)
(7533) 1. Kg4 g5 (1... Ke4 2. Bc3 Ke3 3. Qf1 g5 4. Qf3#) 2. Kf5 g4 3. Ke6 g3 4. Qd5#
(7534) {#4} 1. Bc8 Kxd5 (1... Kd3 2. Bg4 Kd4 3. Bf3 Kd3 4. Rd1#) 2. Nc2 Kc4 3. Re3 Kd5 4. Be6#
(7535) {#4} 1. Qb2 Kb5 (1... Kb4 2. Kb6 Kc4 3. Qd2 b2 4. Bd5#) 2. Qd4 b2 3. Qc3 b1=Q 4. Bc6#
(7536) {#4} 1. Kh4 Kf3 (1... Kf5 2. Bh3+ Kg6 (2... Ke4 3. Qd2 Kf3 4. Bg2#) 3. Qf8 e4 4. Bf5#) 2. Qd3+ Kf2 3. Qe2+ Kg1 4. Qg2#
(7537) 1. Kb3 a5 (1... a6 2. Kc2 a5 3. Kd2 a4 4. Ke2 a3 5. Kf2 a2 6. Qg1#) 2. Ka4 Kh1 3. Qg3 h2 4. Kb5 a4 5. Qf2 a3 6. Qf1#
(7538) {aeie} 1. Bc8 Kd5 2. Bb7 Ke5 3. Rg6 Kf5 4. Be4+ Ke5 5. f4#
(7539) 1. Re1 Kg5 2. Rg1+ Kf5 (2... Kh6 3. Nf8 f5 4. Rg6#) 3. Rh1 Kg5 4. Rh5#
(7540) 1. h7 Kg7 (1... Kf5 2. h8=Q Kf4 3. Qc3 Kf5 4. Qe5#) 2. h8=R Kxh8 3. Kg6 Kg8 4. Re8#
(7541) 1. Kd6 Kd4 2. Nf6 Kc4 3. Nd5 Kd4 4. Bb1 Kc4 5. Rb4#
(7542) 1. Bf2 Nf1+ (1... Nf3 2. Bf7 Ng5 3. Bd5+ Ne4+ 4. Bxe4#) 2. Kh3 Nd2 3. Bh5 Nf3 4. Bxf3#
(7543) 1. Ba5 g4 2. Bd2 g3 3. Bh6 Nf6 4. Bg7 g2 5. Bxf6#
(7544) 1. Kf4 c4 2. b4 c3 3. Ne3 c2 4. Nb5#
(7545) 1. Kd6 Kf7 2. Kd7 Kf6 3. e8=Q Kf5 4. Qe3 Kf6 5. Qf4+ Kg6 6. Ke7 Kh5 7. Qg3 Kh6 8. Kf6 Kh7 9. Qg7#
(7546) 1. Kf4 Kg6 2. Kg4 Kh6 3. Kf5 Kg7 4. Kg5 Kh7 5. Kf6 Kg8 6. Rh2 (6. Kg6 Kh8 7. Rf8#) 6... Kf8 7. Rh8#
(7547) 1. Ra7 Kc8 2. Ra8+ Kb7 3. Rxe8 Kb6 4. Re5 Kb7 5. Rb5+ Ka6 6. Kc6 Ka7 7. Rb1 (7. Kc7 Ka6 8. Rc5 Ka7 9. Ra5#) 7... Ka8 8. Kc7 Ka7 9. Ra1#
(7548) 1. a8=Q Kb1 2. Qe4+ Kc1 3. Qe2 c2 (3... Kb1 4. Qd1#) 4. Qe1# {or 1905?}
(7549) 1. g3 Kg8 2. g4 Kh8 3. g5 Kg8 4. g6 Kh8 5. Rh7#
(7550) 1. Rb2 Ka7 2. Kf2 Ka6 3. Ke3 Ka5 4. Kd4 Ka4 (4... Ka6 5. Kc5 Ka7 6. Nc6+ Ka8 7. Rb8#) 5. Kc5 Ka3 6. Nc4+ Ka4 7. Rb4#
(7551) 1. Kd5 Kd2 2. Kxc4 Ke2 3. Kc3 Kf1 4. Bd3#
(7552) 1. Kg2 Kf5 2. Kf3 Kg6 3. Kg3 Kf5 4. Bh7#
(7553) 1. Kb4 Kb1 2. Kc3+ Kc1 (2... Ka2 3. Kc4 Ka3 4. Ra6#) 3. Kd3 Kd1 4. Rb1#
(7554) 1. Re7 Be4 2. Re8 Bg2 3. Re1+ Bf1 4. Rxf1#
(7555) 1. Rd5 h6 (1... Kb7 2. d7 Kb6 3. d8=Q+ Ka7 4. Rd7#) (1... Kc8 2. Bc6 Kb8 3. Ra5 Kc8 4. Ra8#) 2. d7 Kb7 3. d8=Q h5 4. Rd7#
(7556) {#4} 1. Na2 Kd5 (1... b4 2. Rc6 Kd5 (2... b3 3. c3+ Kd3 4. Nc1#) 3. Nxb4+ Kd4 4. c3#) 2. Nc3+ Kd6 3. Nxb5+ Kd5 4. c4#
(7557) 1. Kg4 Kg7 (1... Ke7 2. g7 Ke8 3. g8=Q+ Ke7 4. Qd8#) 2. e7 Kg8 3. e8=Q+ Kg7 4. Qh8#
(7558) {a} aeaai ia dyae} 1. Rc8 Kf1 2. Nf3 h2 (2... Kg2 3. Rg8+ Kf1 4. Rg1#) 3. Nxb4 h1=Q 4. Rc1#
(7559) 1. Qg3 Kd3 2. Qxf3+ Kxc4 (2... Kd4 3. Rc6 Ke5 4. Rd6 Kxd6 5. Qf6#) 3. Qe3 Kd5 4. Rc6 Kxc6 5. Qc5#

(7560) 1. Kd7 Kh4 (1... h5 2. Ke6 Kh4 3. Qe3 Kxg4 4. Qg3#) 2. Qf3 h5 (2... Kg5 3. Qf5+ Kh4 4. Qh5#) 3. Qf4 hxg4 4. Qh6# {(ver.Kozhakin +pd3)}
(7561) 1. Kd4 Kd6 2. Rb7 Kc6 3. Bd5+ Kd6 4. c5#
(7562) {#4} 1. e7 Kd6 (1... Kf4 2. e8=Q Kg3 3. Qe4 Kh2 4. Nf1#) 2. e8=R Kd7 3. Nf5 Kxe8 4. Bc6#
(7563) 1. f6 g6 (1... Kxe6 2. fxg7 Kf6 3. g8=R Ke6 4. R8g6#) (1... gxf6 2. Rb6+ Kd7 3. Rg7+ Kc8 4. Rc7#) 2. f7 Kxe6 (2... Kc6 3. Nd8+ Kd6 4. f8=Q#) 3. f8=R Kd6 4. Rf6#
(7564) 1. Kd7 Kd4 2. Ke6 d5 3. Kf5 Kd3 4. Ke5#
(7565) 1. Ne1 Kc1 2. Rd3 Kb1 3. Ra3 Kc1 4. Ra1#
(7566) 1. g8=R Ka2 2. Kc2 Ka1 (2... Ka3 3. Rg4 Ka2 4. Rxa4#) 3. Ra8 a3 4. Rxa3# {iiaoidee A.Ia~aeoca 1987}
(7567) 1. c8=Q a1=N 2. Qc1+ Ka2 3. Kc3 Nc2 4. Qb2#
(7568) 1. Rc8 Kb3 (1... e3 2. Rb8 e2 3. Rxe2 Ka4 4. Ra2#) 2. R2c7 e3 3. Rb8+ Ka2 4. Ra7#
(7569) 1. Re7 g3 2. Kh5 Kf6 (2... g2 3. Bc2+ ({aeoaeue} 3. Bg5 g1=Q 4. Bc2#) 3... Kf6 4. Bg5#) 3. Bg5+ Kf5 4. Bc2#
(7570) 1. Rd3 Bc3+ (1... Ba1 2. Rxa1+ Kxa1 3. Kb3 Kb1 4. Rd1#) (1... Bc1 2. Rxc1 Kb2 3. Rcd1 Kc2 4. R3d2#) 2. Rxc3 dxc3 3. Kxc3 Ka3 4. Ra1#
(7571) 1. Kc6 a6 (1... a5 2. Bxa5 Kxa5 3. Rh4 Ka6 4. Ra4#) 2. Kc5 a5 3. Bxa5 Kxa5 4. Ra3#
(7572) 1. Bg2 a5 (1... Ka4 2. Bc6+ Ka3 3. Nc1 a5 4. Rb3#) (1... Ka2 2. Nc1+ Ka1 3. Be4 a5 4. Rb1#) 2. Bd5 Ka4 3. Rb2 Ka3 4. Ra2#
(7573) 1. Qc4 e3 (1... Kg6 2. Qe6+ Kh5 3. Ng7+ Kh4 4. Bf2#) (1... Kg4 2. Qxe4+ Kh5 3. Ng3+ Kh6 4. Bf8#) 2. Nh6 Kxh6 3. Qf7 g4 (3... e2 4. Bf8#) 4. Bxe3#
(7574) 1. Qf7
(7575) 1. Kh5 Ka3 (1... g3 2. fxg3 Ka3 3. g4 Ka2 4. g5 a5 5. g6 a4 6. g7 Ka3 7. g8=R Ka2 8. Rg1 Ka3 9. Ra1#) 2. Kxg4 Ka2 3. f4 Kb1 4. f5 Kc1 5. f6 Kb1 6. f7 Ka2 7. f8=Q a5 8. Qb8 a4 9. Qb2#
(7576) 1. h8=Q+ Qd8 2. Qh3+ Kb8 3. Qb3+ Qb6+ 4. Qxb6+ Ka8 (4... Kc8 5. Qc7#) 5. Qb7#
(7577) {Mat 4. tahem.} 1. Qf7 Kg5 (1... d3 2. Qf6 d2 3. h3+ Kh5 4. g4# {mat.}) 2. h4+ Kxh4 (2... Kh6 3. g4 d3 4. g5#) (2... Kg4 3. Qf6 Kh5 4. Qg5#) 3. Qf5 d3 4. g3# {mat.} 1-0
(7578) {#4} 1. Bd3 (1. Rf2 \$1) 1... Kd1 (1... d5 2. Rc2+ Kb1 (2... Kd1 3. Be2+ Ke1 4. Nd3#) 3. Kxd5 Ka1 4. Ra2#) 2. Nd5 Kc1 (2... Ke1 3. Ne3 d5 4. Re2#) 3. Nc3 d5 4. Rc2#
(7579) {#4} 1. Rg1 d5 (1... Kh3 2. Rg3+ Kh2 (2... Kh4 3. Bg5+ Kh5 4. Nf4#) 3. Bxd6 Kh1 4. Rg1#) 2. Nd4 Kh5 (2... Kh3 3. Nf3 d4 4. Rg3#) 3. Nf5 d4 4. Rg5#
(7580) 1. Qe7 h5 (1... h6 2. f4 h5 3. f5+ Kh6 4. g5#) 2. gxh5+ Kxh5 (2... Kh6 3. f4 Kxh5 4. Qg5#) (2... Kf5 3. Kf2 Kf4 4. Qf6#) 3. Qg7 Kh4 4. Qg4#
(7581) {aeie} 1. Kxd4 Ka1 (1... a4 2. Kc4 Ka1 3. Nc3 a3 4. Nb3#) 2. Kc4 Ka2 3. Nc3+ Ka1 4. Nb3#
(7582) 1. Rd3+ Kc8 2. Rc3+ Kb8 3. Qc7+ Ka8 4. Qa5+ Kb8 5. Qb4+ Ka8 6. Qa3+ Kb8 7. Qb2+ Ka7 8. Ra3#
(7583) 1. Nd2 d3 (1... Ka5 2. Nb3+ Ka6 3. Nc5+ Ka5 4. b4#) 2. Rb6 Ka5 3. Nc4+ Ka4 4. b3#
(7584) 1. Qc8 f6 (1... f5 2. Qc7 Kd4 3. Re5 f4 4. Qc3#) (1... Kd4 2. Qc3+ Kd5 3. b4 Kd6 4. Qc5#) 2. b3 f5 3. Re6 f4 4. Qc4#
(7585) 1. Kc5 d6+ (1... d5 2. Kxd5 Kf6 3. Be8 Kf5 4. Ref2#) (1... Kf6 2. Bxd7 Kf7 3. Kd6 Kf6 4. Ref2#) 2. Kxd6 Kf4 3. Bc6 Kf5 4. Ref2#
(7586) {#4} 1. Qh6 c3 (1... Kc5 2. Kc3 Kb5 3. Bxc4+ Kc5 4. d4#) 2. dxc3 Kc5 3. Bc4 Kxc4 4. Qc6#
(7587) 1. Nb5 axb5+ 2. Kc3 ({dual} 2. Kc5 b4 3. Kc4 b3 4. axb3#) 2... b4+ 3. Kc4 b3 4. axb3#
(7588) 1. Nc2 Ke4 (1... Kc4 2. Qd4+ Kb5 3. Nb4 Ka5 4. Qc5#) (1... Kd2 2. Qd4+ Kc1 3. Kxh4 Kb1 4. Qa1#) 2. Qc5 Kf4 3. Bf3 Kxf3 4. Qe3#
(7589) {Mat 4. tahem.} 1. Bb5 a6 (1... h6 2. Bd7 a5 3. g3+ Kh5 4. Be8# {mat./}) (1... Kh5 2. Be2+ Kh6 3. g4 a5 4. g5# {mat atd./}) 2. Be2 a5 3. Bg4 a4 4. g3# 1-0
(7590) 1. Rf2 Ke5 2. Rf1 Ke6 (2... Kd6 3. Re1 Kd7 4. Bh2 Kd8 5. Bc6 Kc8 6. Re8#) 3. Bh2 Ke7 4. Bh3 Ke8 5. Bd6 Kd8 6. Rf8#
(7591) 1. Nbd6 Kxd5 (1... Kb4 2. Qd4 Kb3 (2... Ka4 3. Qd3 (3. Qe3) 3... Kb4 4. Qa3#) 3. Qb2+ Ka4 4. Qa3# (4. Qb5#)) 2. Qh5+ Kd4 3. Qa5 Kd3 4. Qd2#
(7592) 1. Kg7 Ke6 (1... g3 2. Bc6 Kg5 3. Bd7 Kxh4 4. Bd8#) (1... Kg5 2. Rxh5+ Kxh5 3. Bd8 g3 4. Bf3#) 2. Bc6 Ke7 3. Rxh5 g3 4. Re5#
(7593) 1. Qb8 c5 (1... Ka5 2. b3 Ka6 3. b4 c5 4. bxc5 Ka5 5. Qb3 Ka6 6. Qb6#) 2. Qb7 c4 3. Qb6 c3

4. bxc3 Ka3 5. Qb1 Ka4 6. Qb4#

(7594) {Mat 4. tahem.} 1. Nd6 {/hrozi 2.Je6+ Ke5 3.Jc4+/>} 1... Ke5 (1... Kc5 2. Qd5+ Kb6 3. Na8+ Ka6 4. Qa2#) 2. Nf7+ Kd4 3. Ne6+ Kc4 4. Nd6# {/Soukup c.69/} 1-0

(7595) 1. Qd6 b3 (1... h6 2. Qc5 h5 3. Bc7 b3 4. Qe5#) (1... Ke3 2. Bg4 h5 3. Bb6+ Ke4 4. Qd4#) 2. Bc3 Ke3 3. Bg4 Ke4 4. Qd4#

(7596) 1. Rh8 g4 2. Rg8 Nf6 (2... Nf4 3. Rg7 Nxc2 4. Rh7#) 3. Kxf6 Kh5 4. Rh8#

(7597) 1. Qe6 Ka3 (1... Kb5 2. Nb2 Kc5 (2... Kb4 3. Qe3 Ka5 4. Qb6#) 3. Qb6+ Kd5 4. Nc7#) 2. Nb6 Kb4 3. Qe5 Ka3 4. Qb2#

(7598) 1. Bf6 Kh2 (1... Kh1 2. Qh5+ Kg1 3. Bh4 Kh2 4. Bf2#) 2. Qh5+ Kg1 3. Bh4 Kf1 4. Qd1#

(7599) 1. Bh1 Nb7 2. Kxc6 Nxc5 3. Kb6+ Nb7 4. Bxb7#

(7600) 1. Be4 Na3 2. Bd3 Nb5 3. Bxb5 Kb7 4. c8=N Ka8 5. Bc6#