

Rozsáhlá sbírka šachových problémů (mnohotažek)

# Strmilovská zastavení bohyně Caissy

## 4.díl

diagramy 601-800

### **Bílá dáma**

Vznešená je Bílá dáma  
mocná silná tajemná  
přichází ač není zvána  
bílá - přesto tak temná.

V každý směr se vydat může  
blízko nebo do dále  
tu dámu nikdo nepřemůže  
a nikdo jí neošálí.

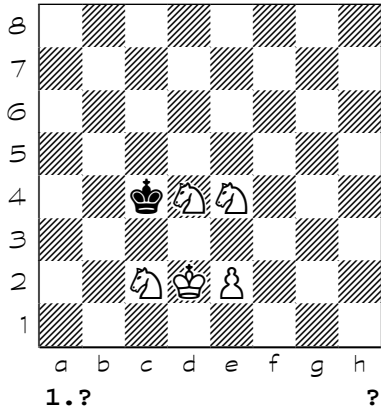
Spanilá je Bílá dáma  
cení čelist zubatou  
přichází ač není zvána  
a třímá kosu rezatou...

*Hyacint*

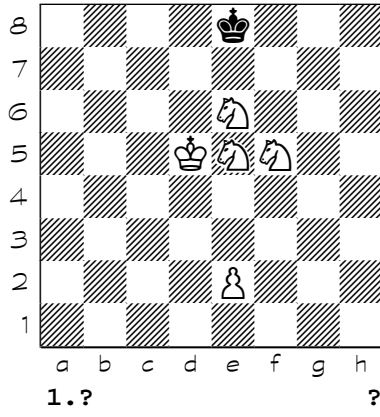
<http://www.strmilov.cz/>

Chess diagrams

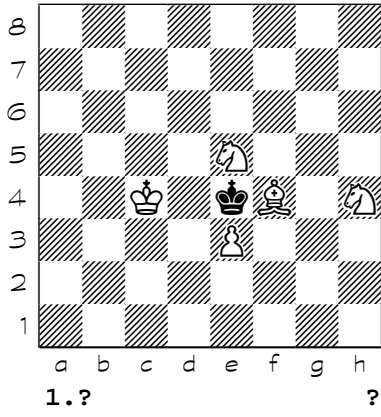
601



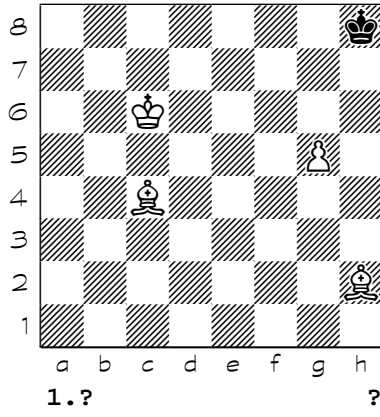
602



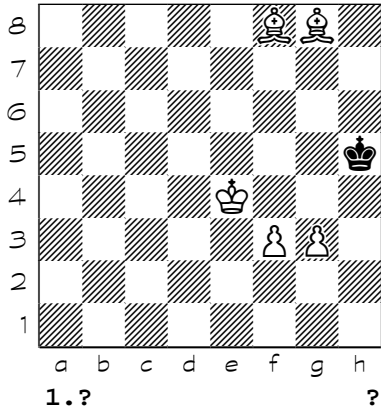
603



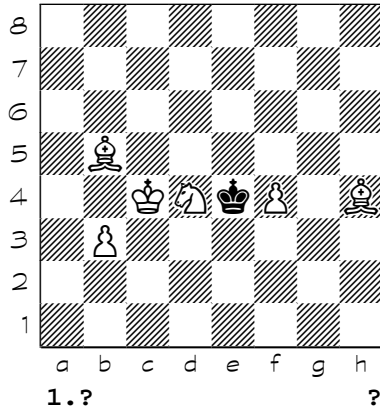
604



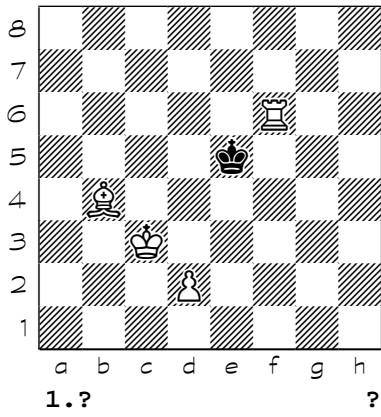
605



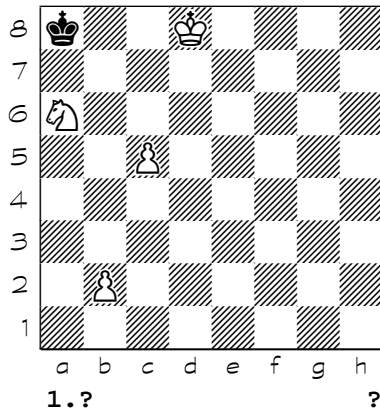
606



607

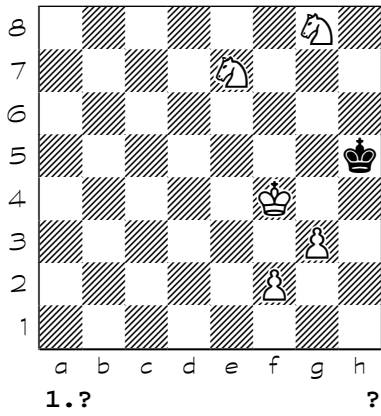


608

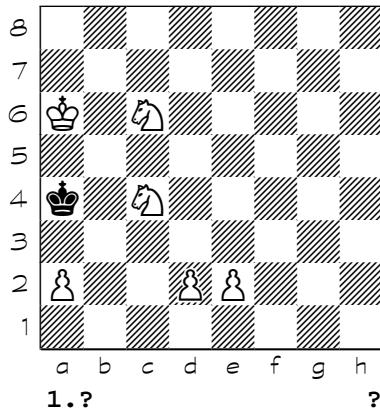


Chess diagrams

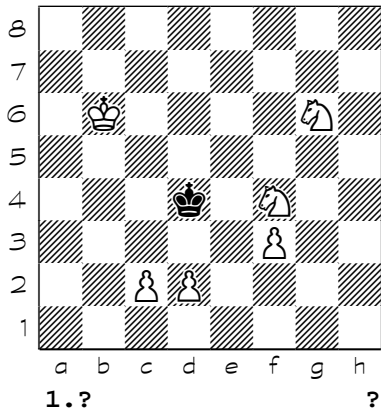
609



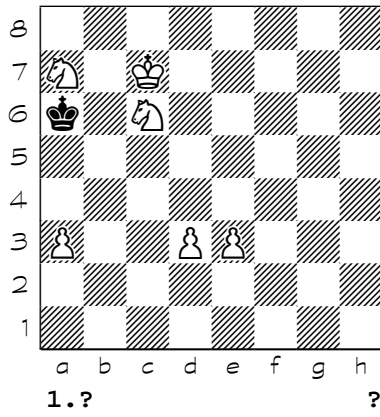
610



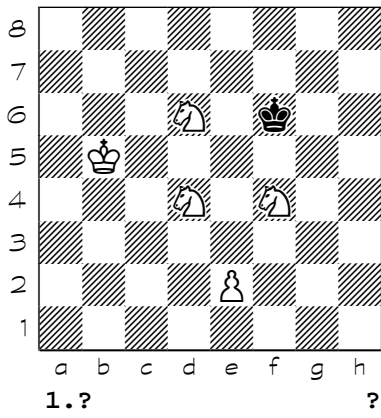
611



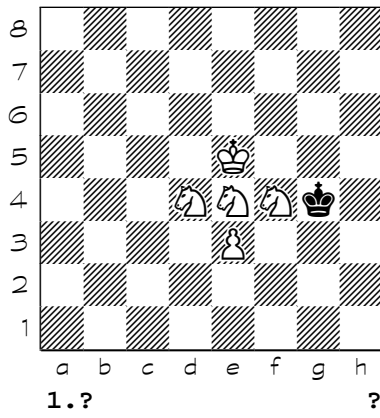
612



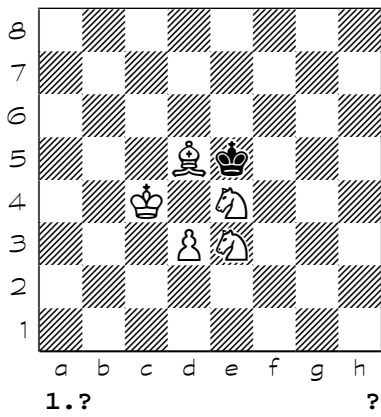
613



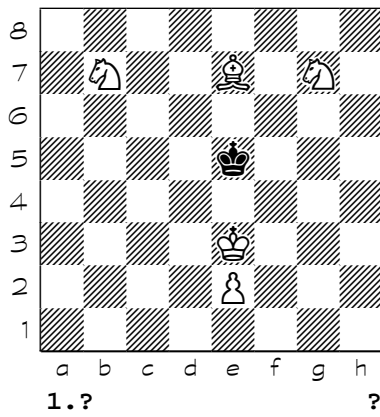
614



615

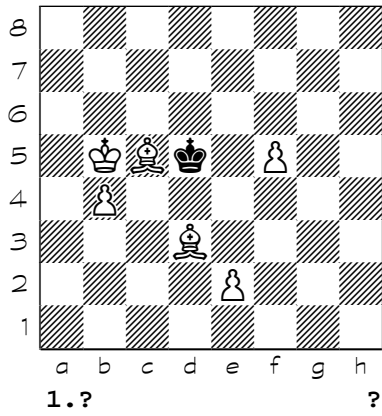


616

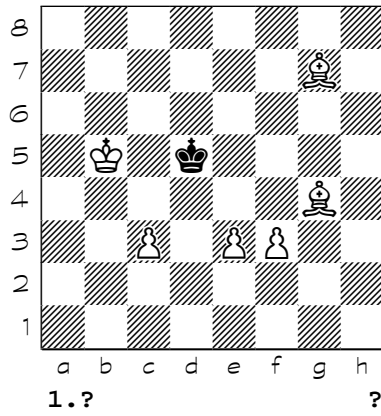


Chess diagrams

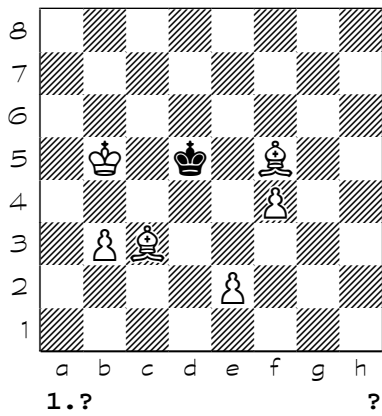
617



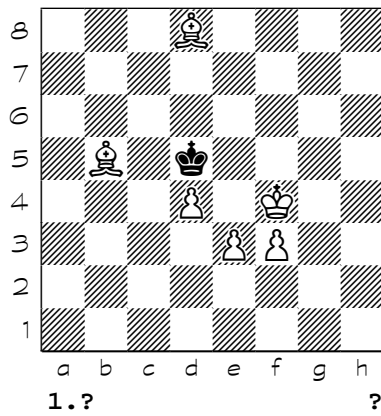
618



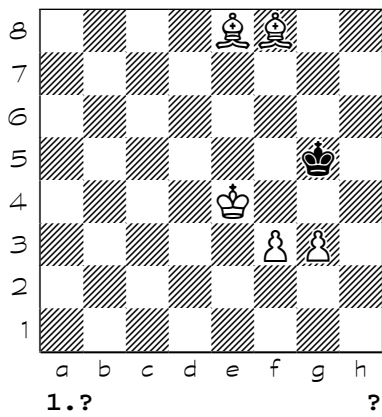
619



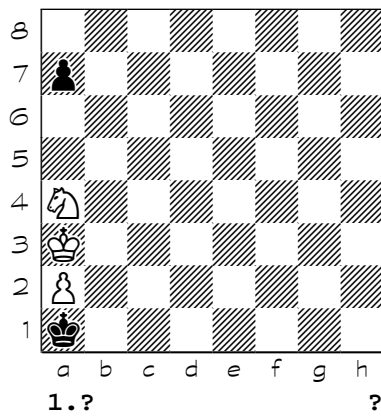
620



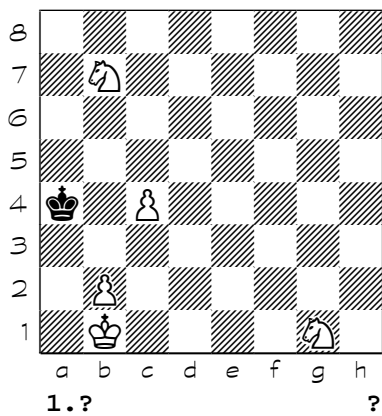
621



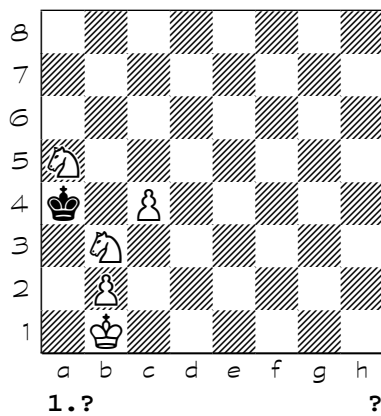
622



623

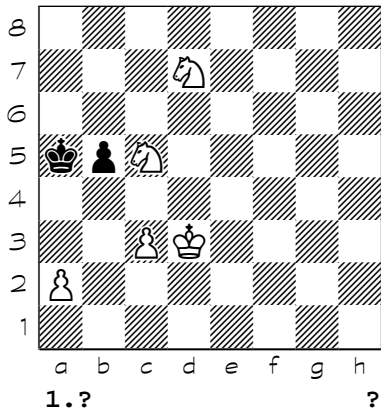


624

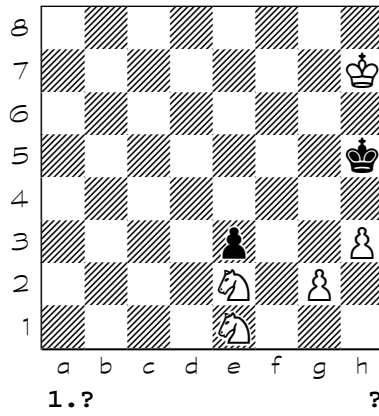


Chess diagrams

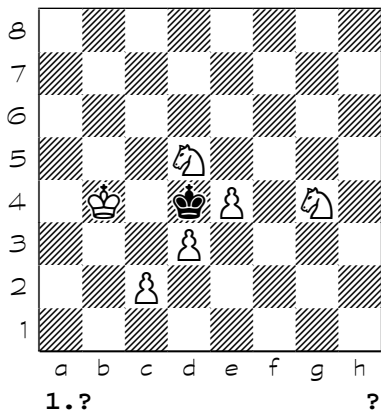
625



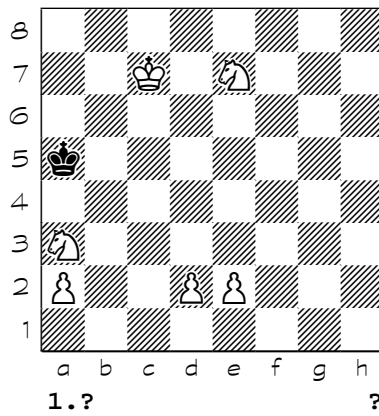
626



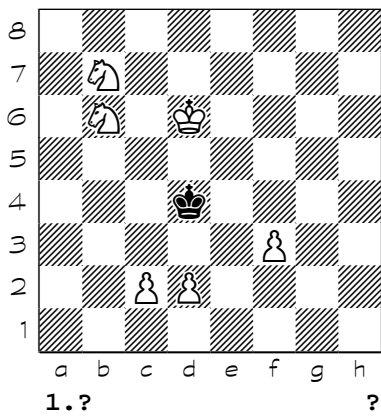
627



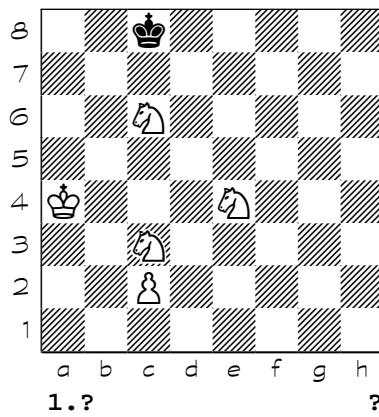
628



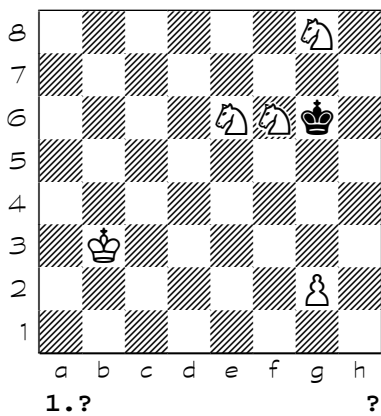
629



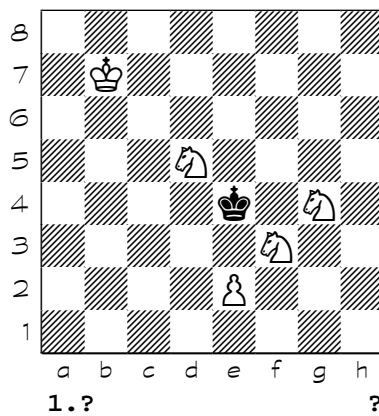
630



631

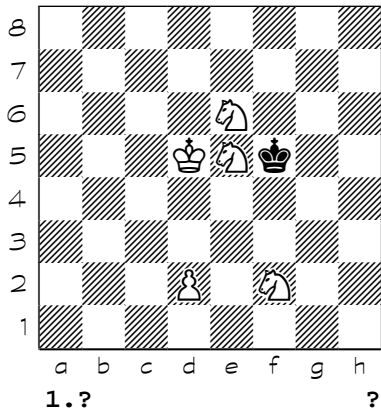


632

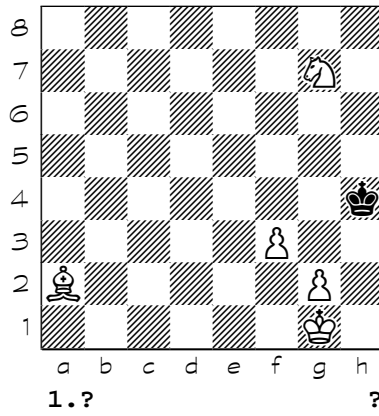


Chess diagrams

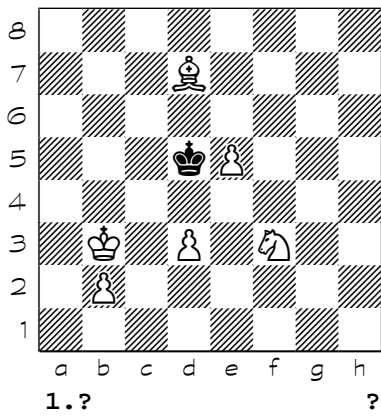
633



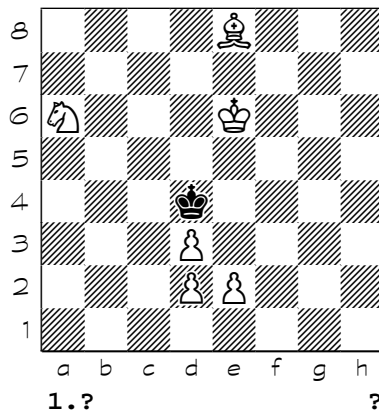
634



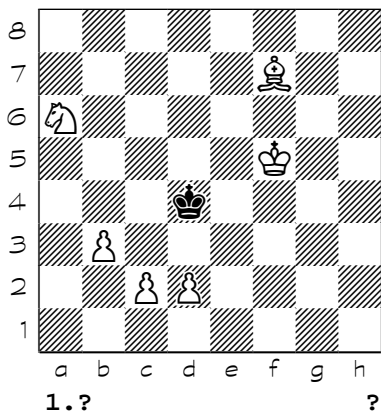
635



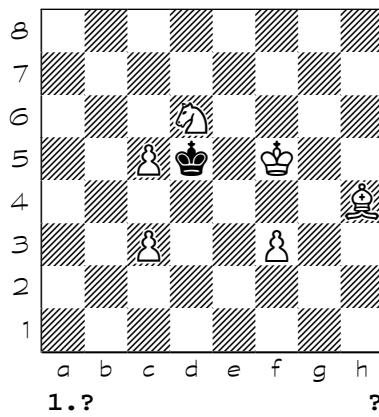
636



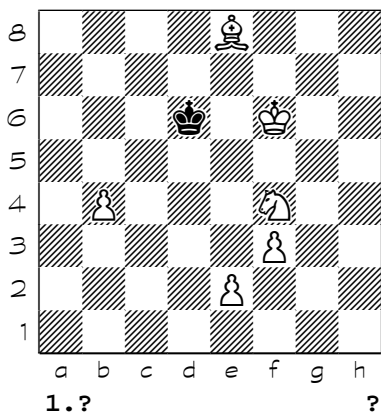
637



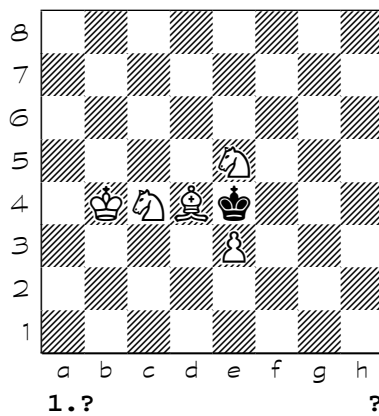
638



639

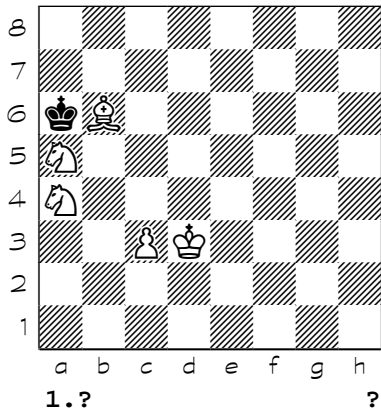


640

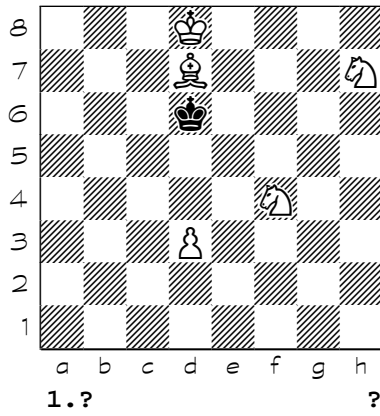


Chess diagrams

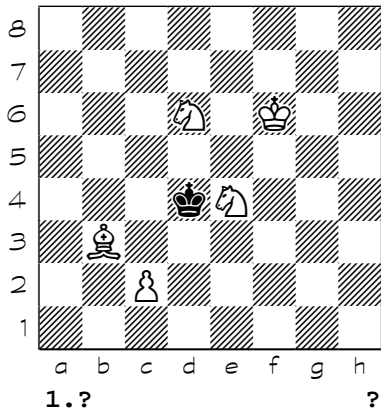
641



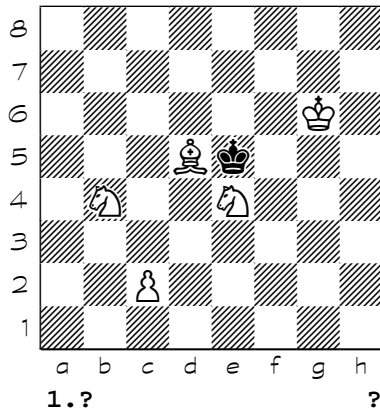
642



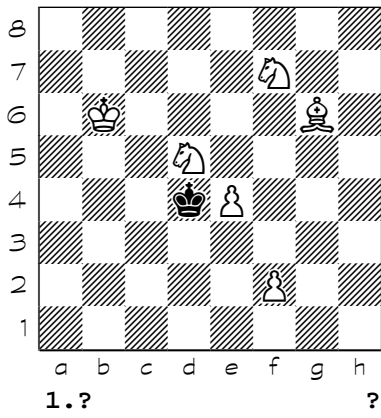
643



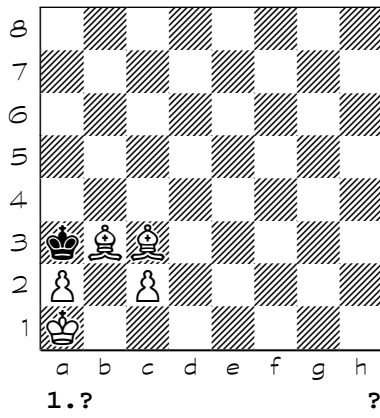
644



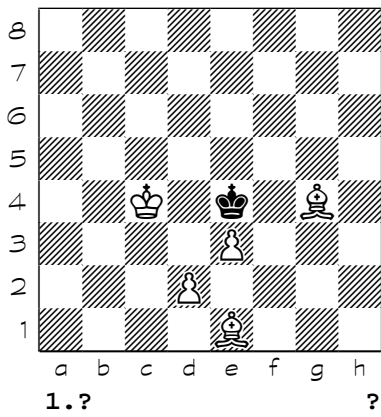
645



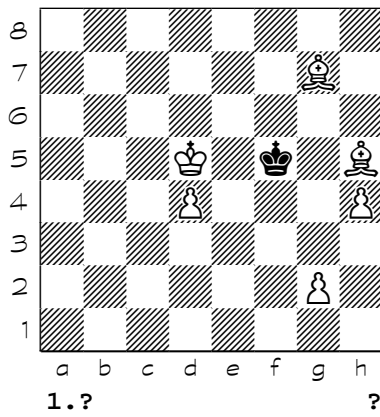
646



647

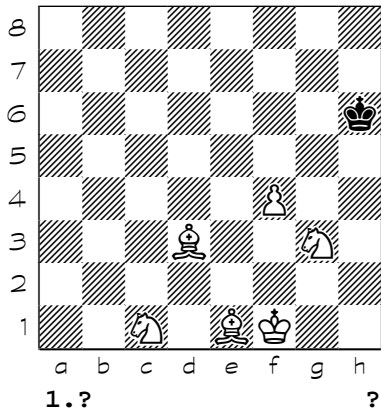


648

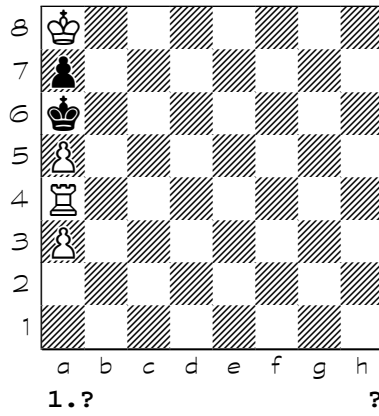


Chess diagrams

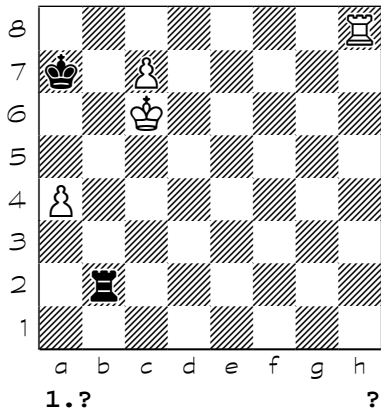
649



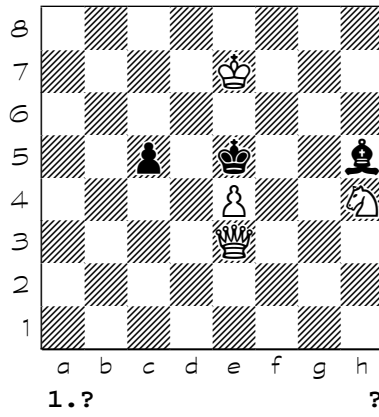
650



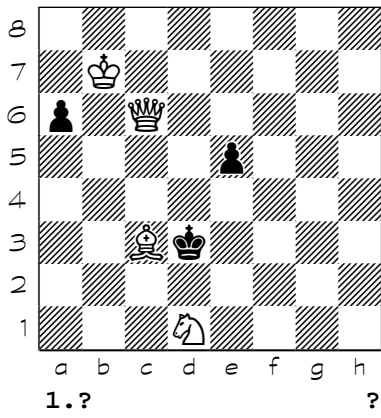
651



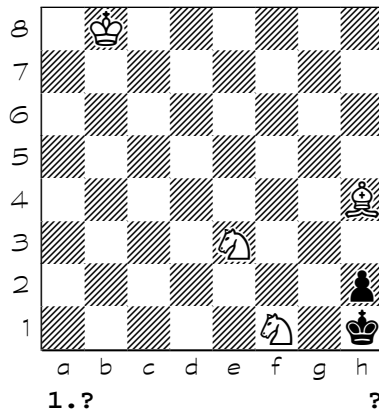
652



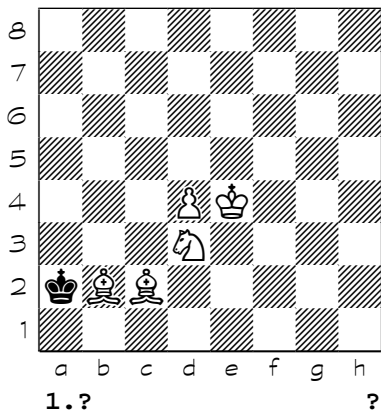
653



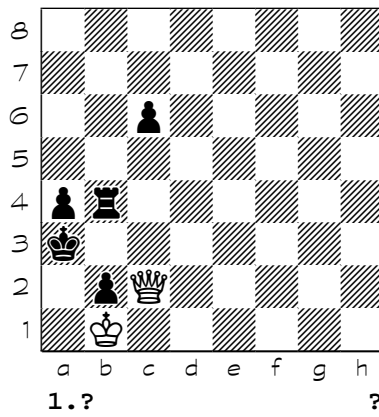
654



655



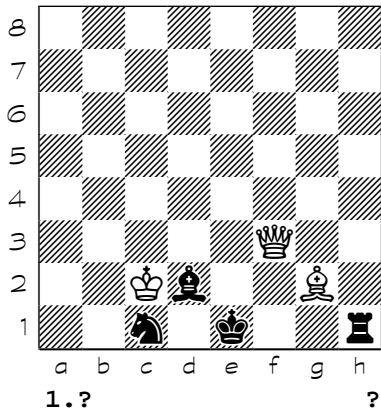
656



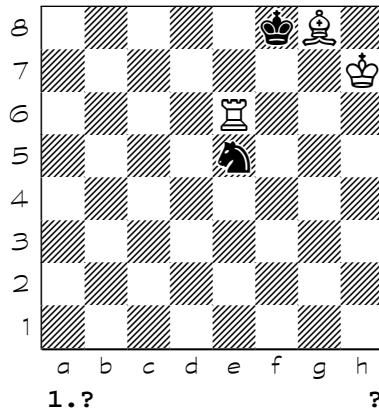


Chess diagrams

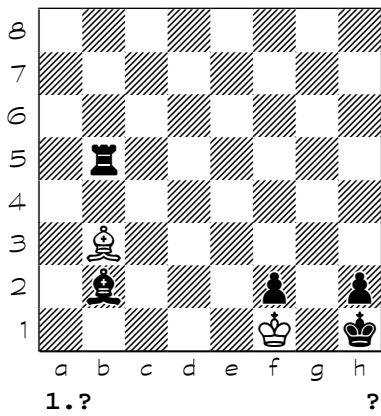
657



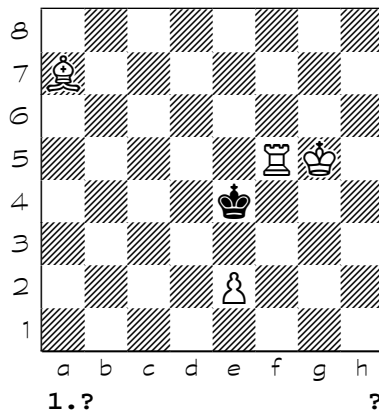
658



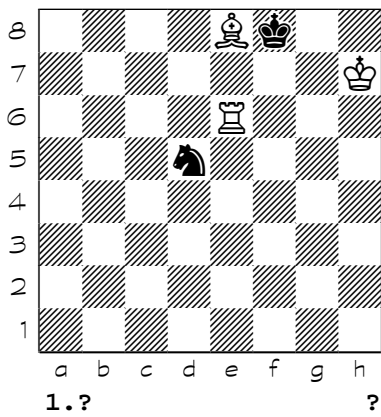
659



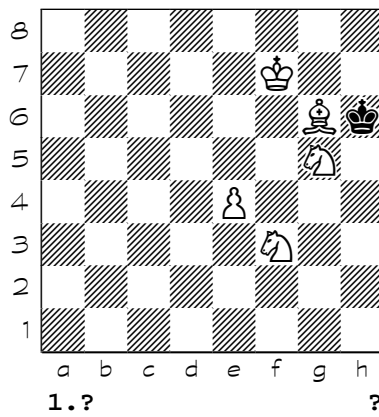
660



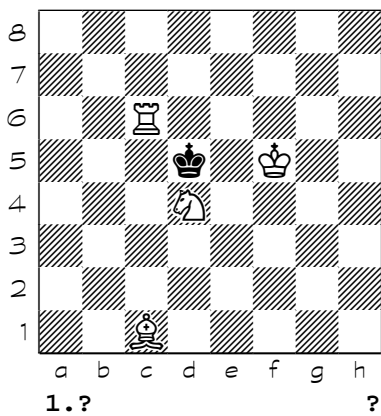
661



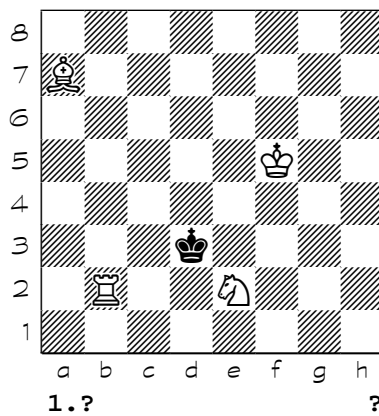
662



663

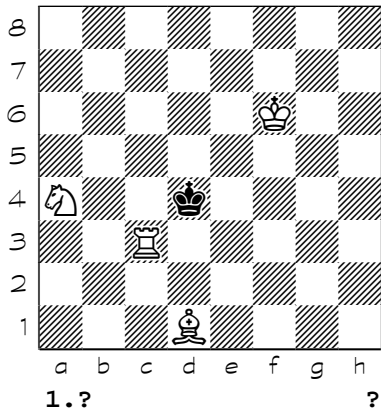


664

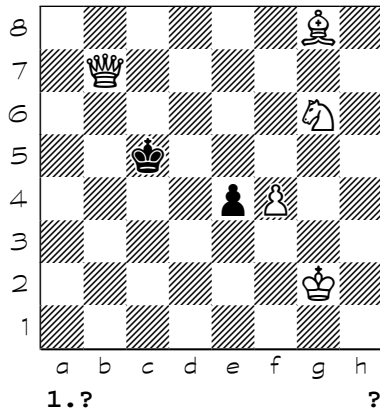


Chess diagrams

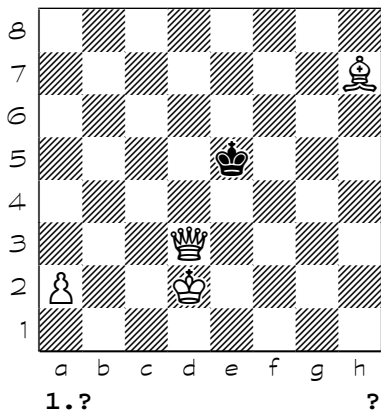
665



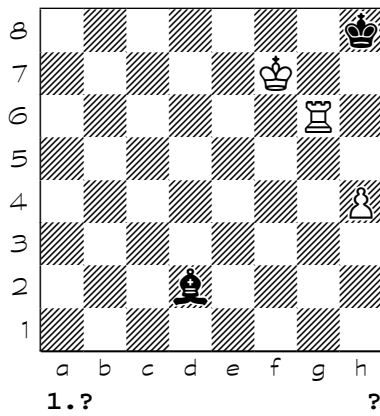
666



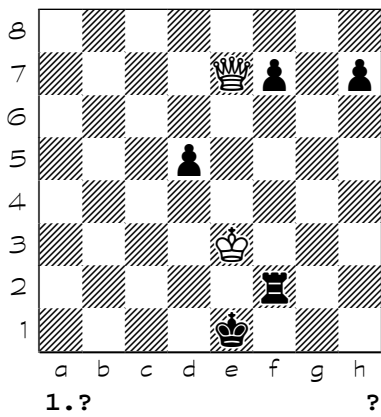
667



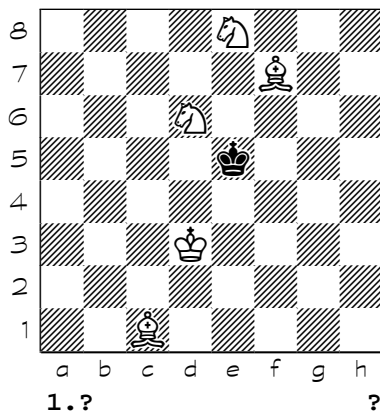
668



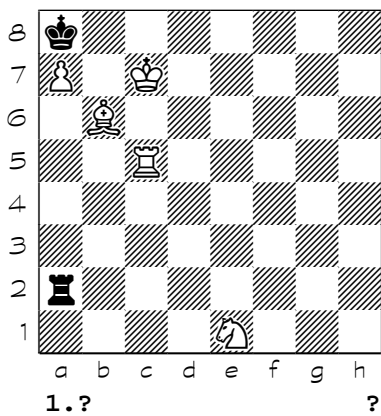
669



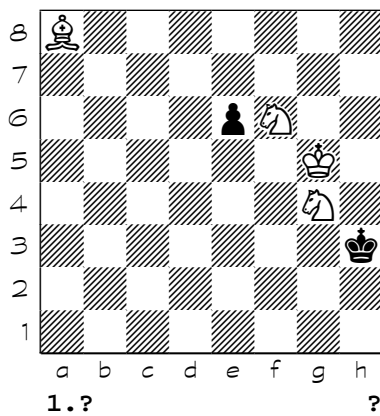
670



671

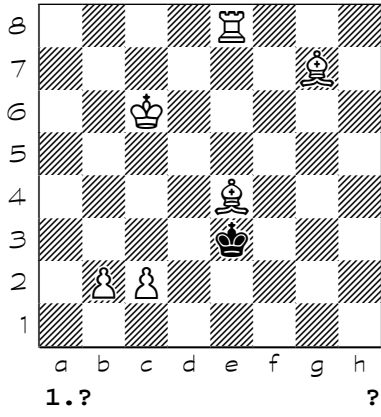


672

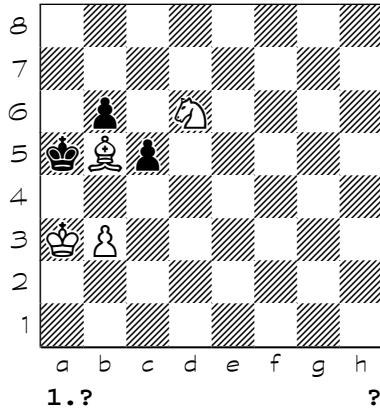


Chess diagrams

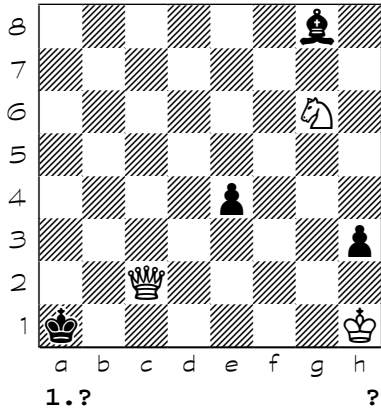
673



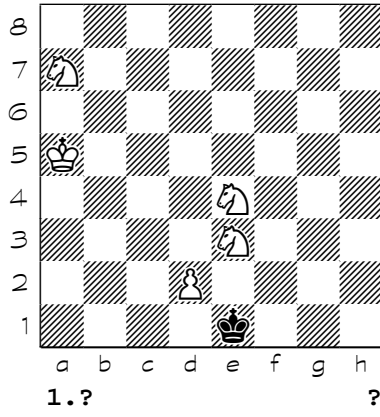
674



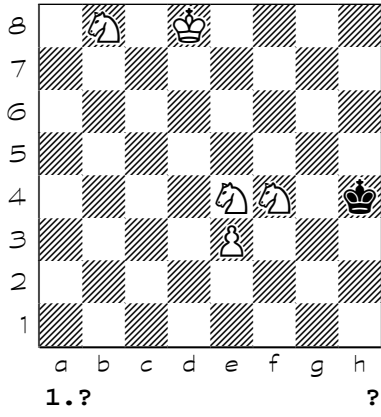
675



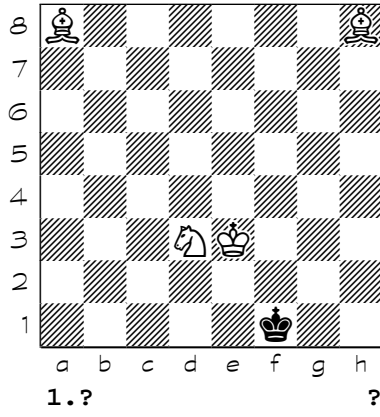
676



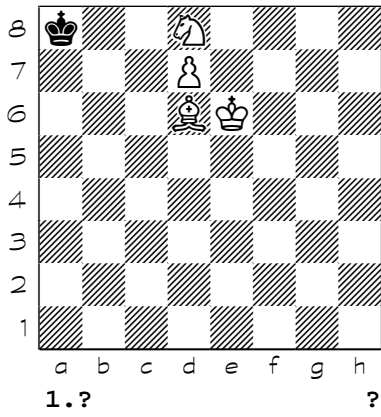
677



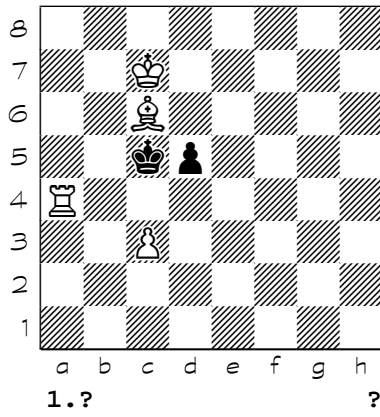
678



679

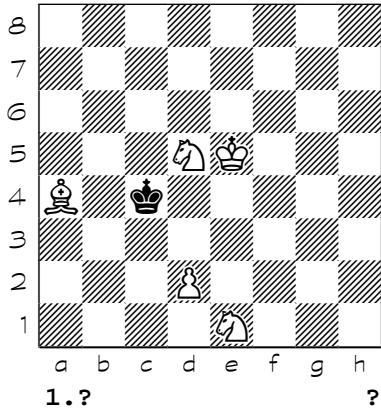


680

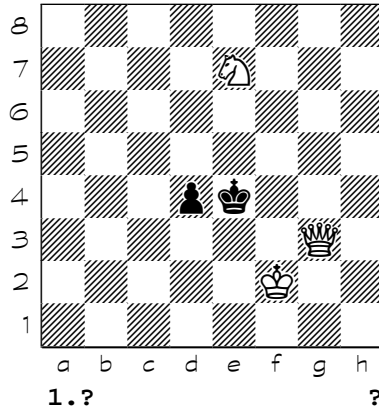


Chess diagrams

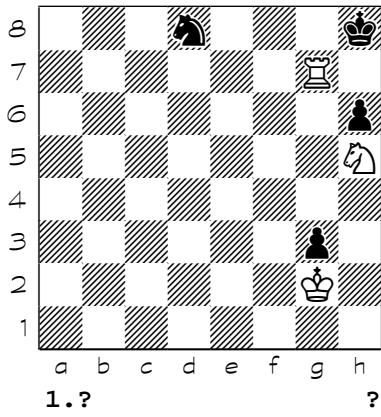
681



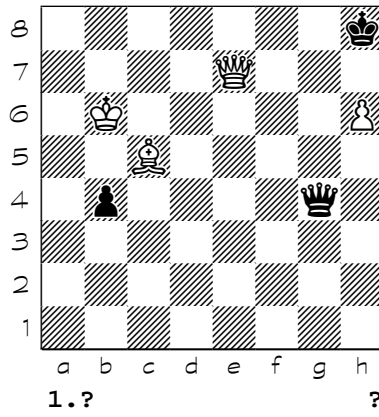
682



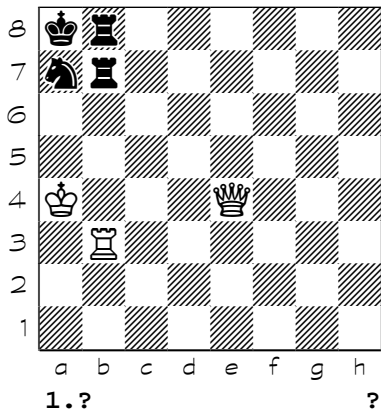
683



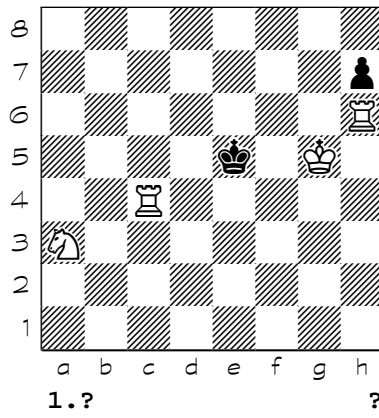
684



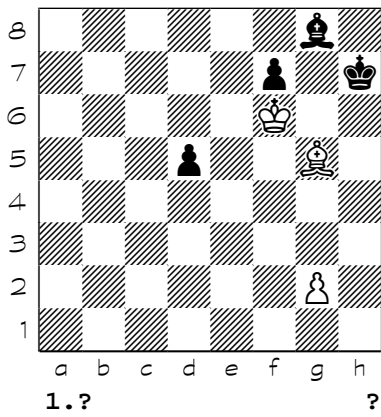
685



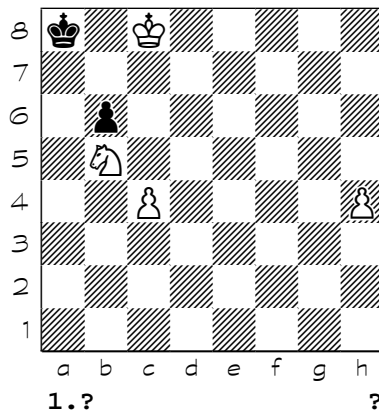
686



687

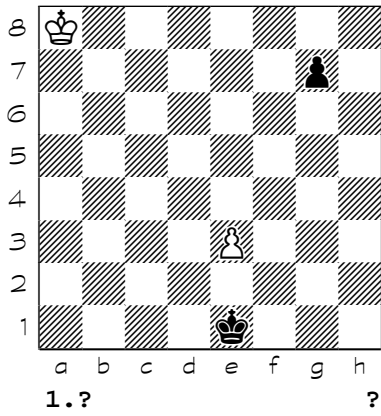


688

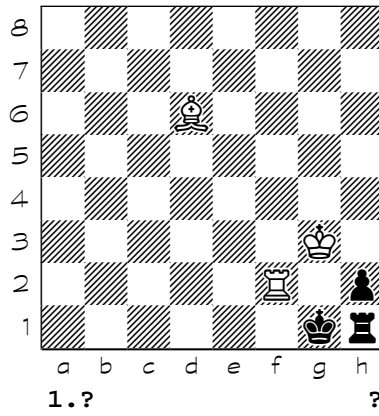


Chess diagrams

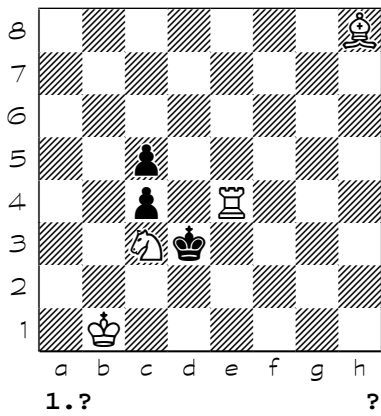
689



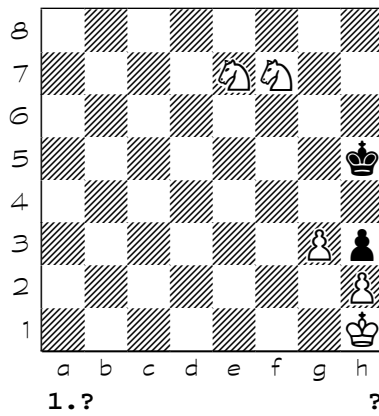
690



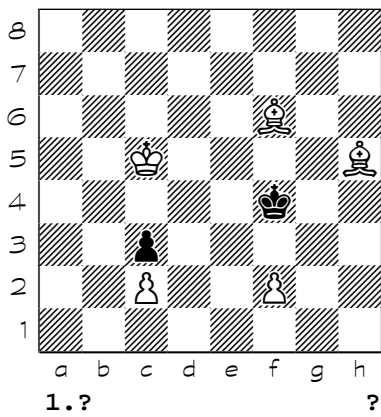
691



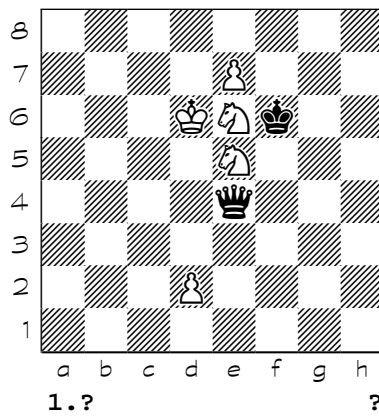
692



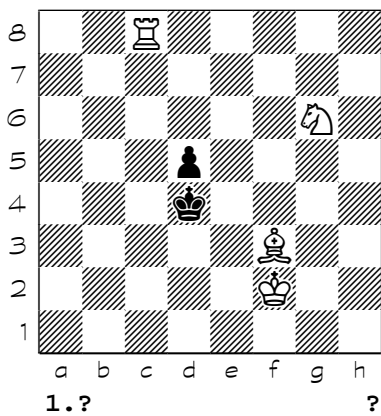
693



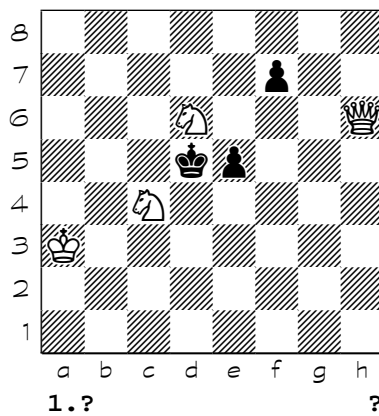
694



695

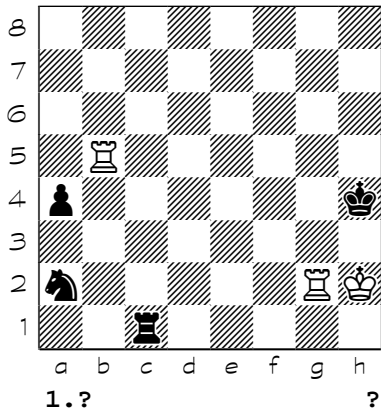


696

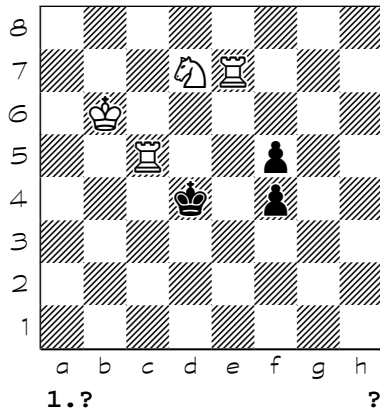


Chess diagrams

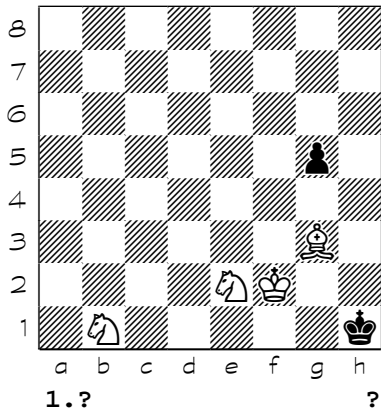
697



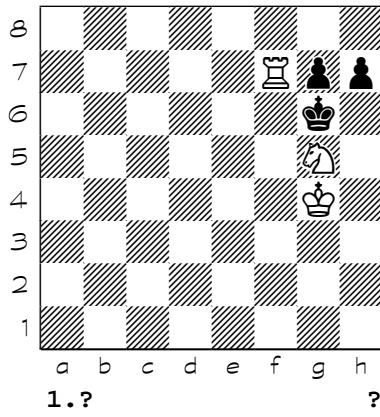
698



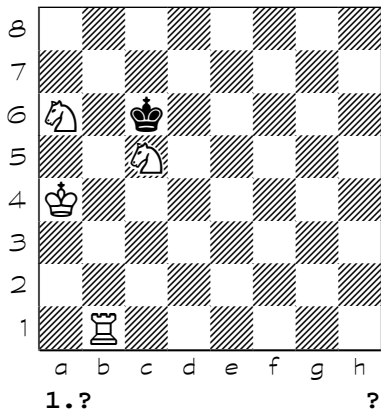
699



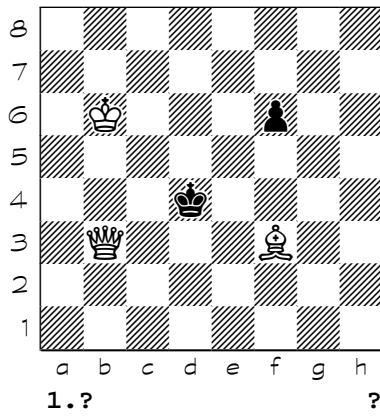
700



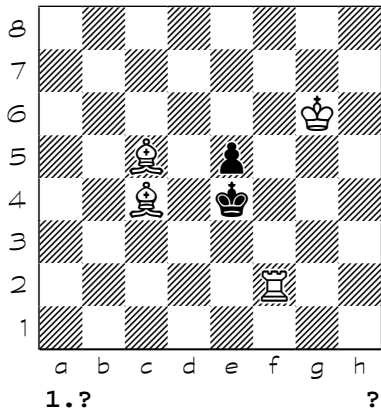
701



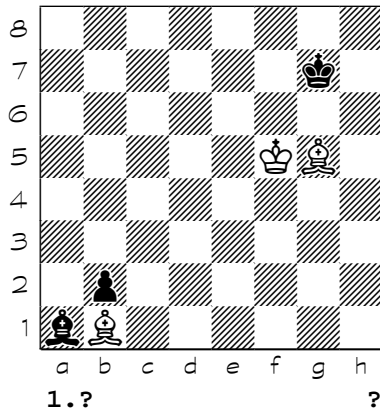
702



703

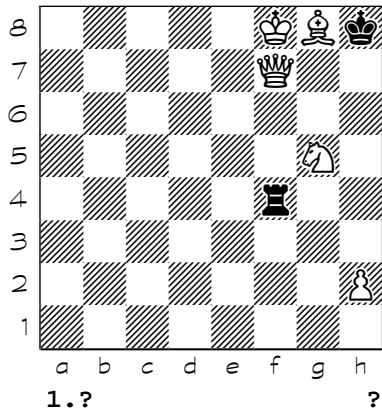


704

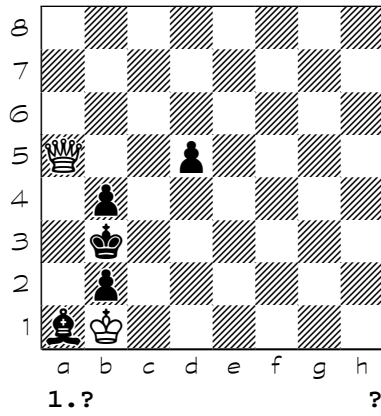


Chess diagrams

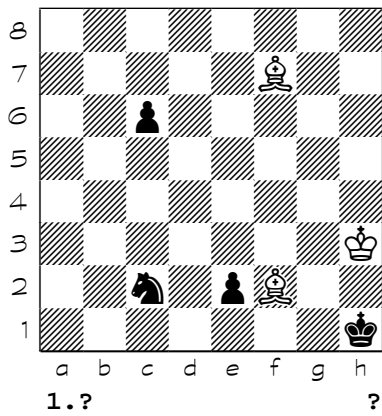
705



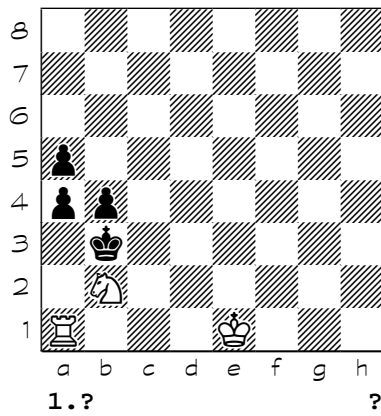
706



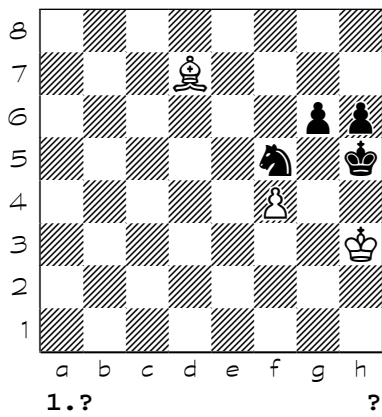
707



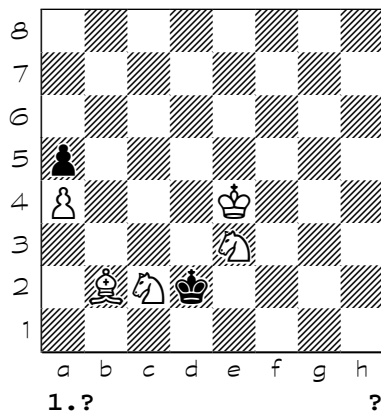
708



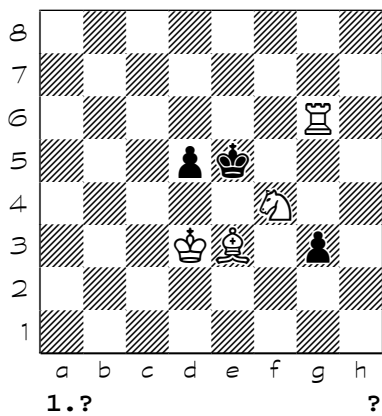
709



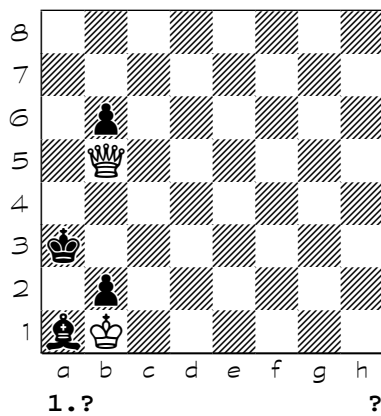
710



711

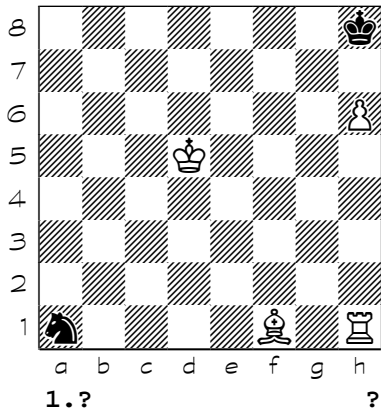


712

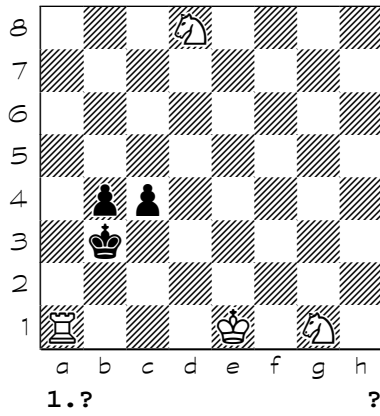


Chess diagrams

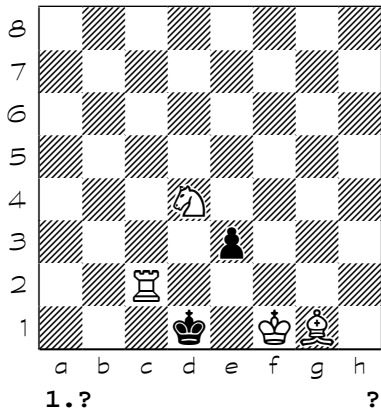
713



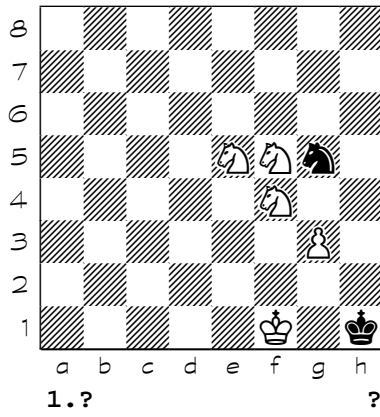
714



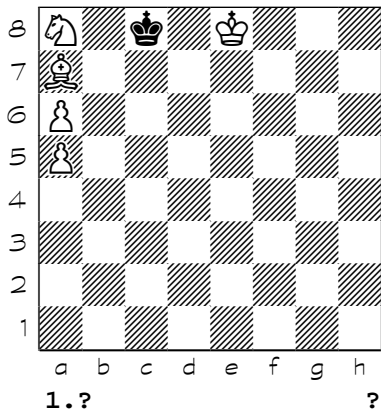
715



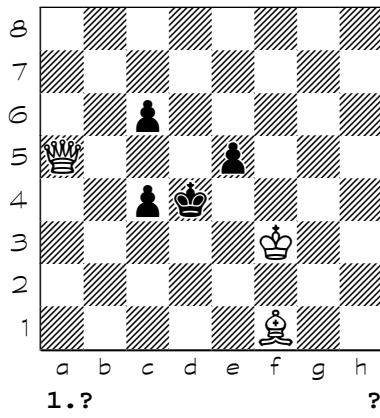
716



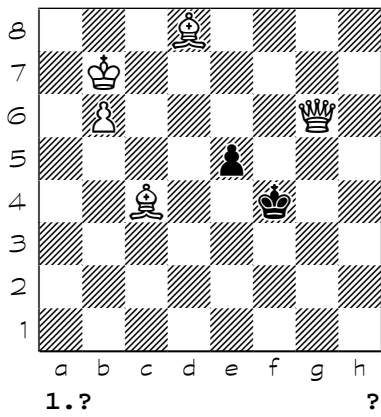
717



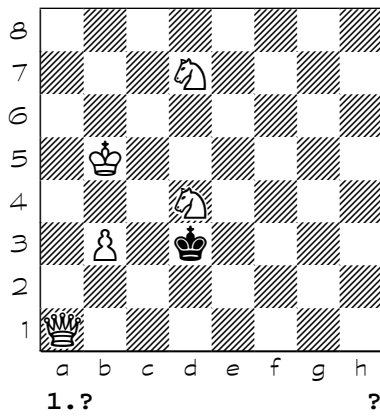
718



719



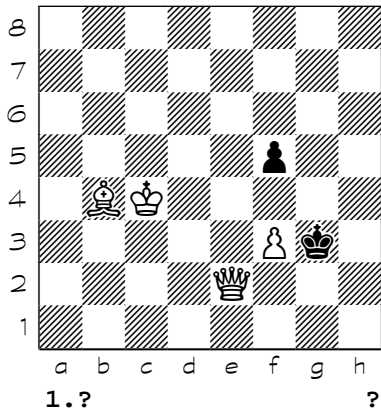
720



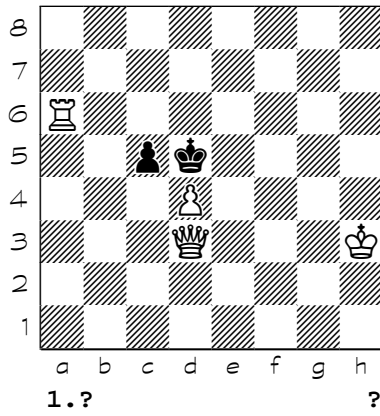


Chess diagrams

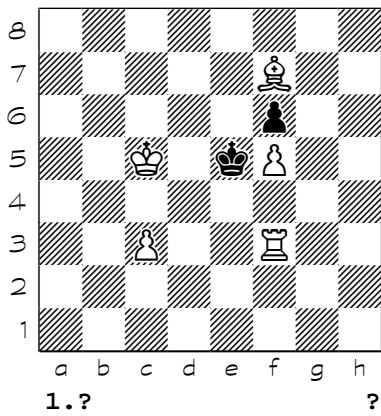
721



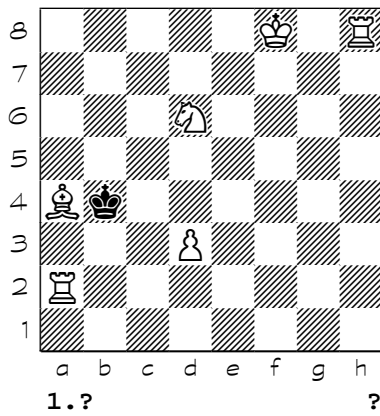
722



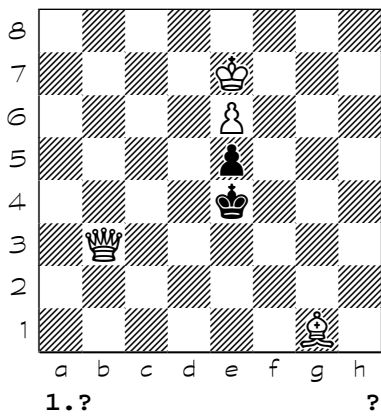
723



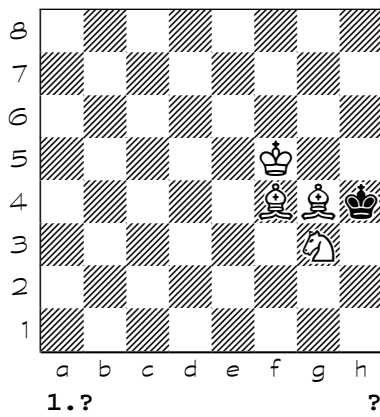
724



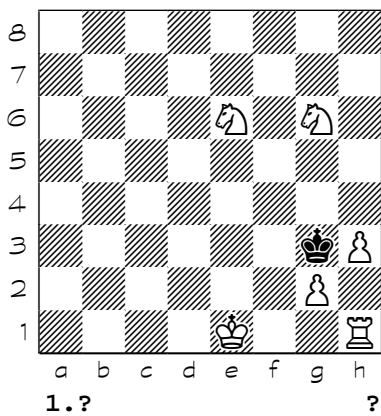
725



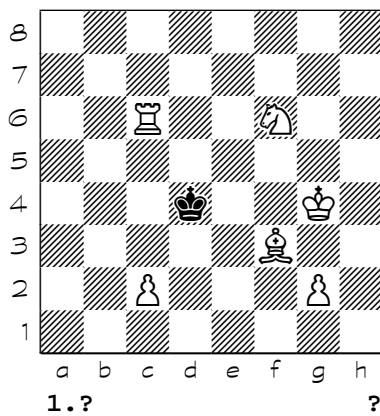
726



727

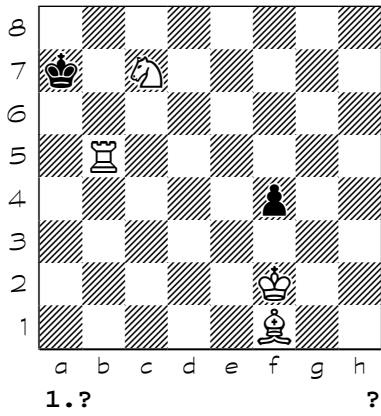


728

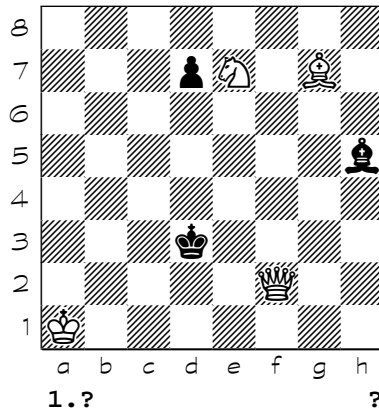


Chess diagrams

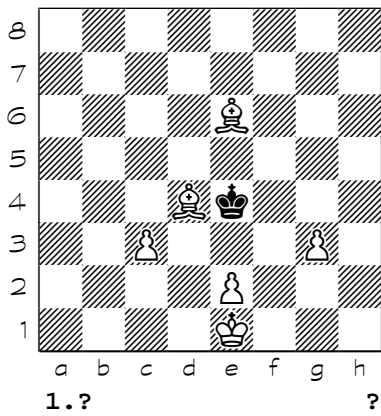
729



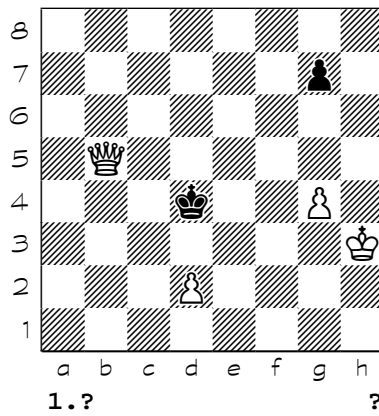
730



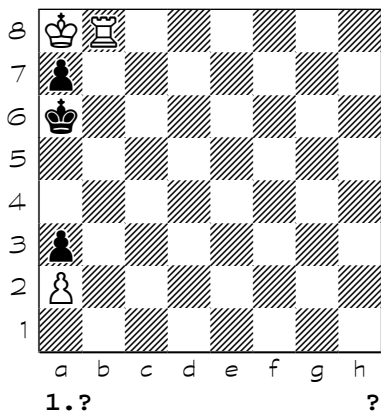
731



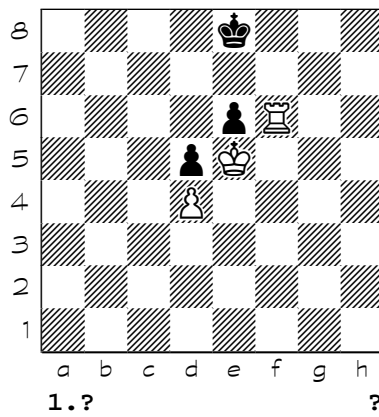
732



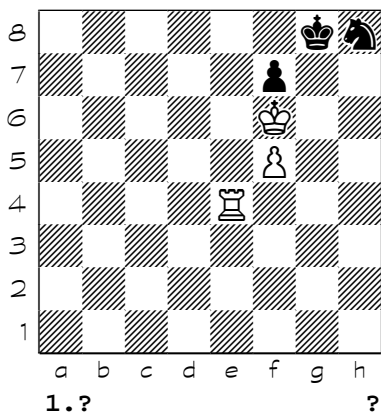
733



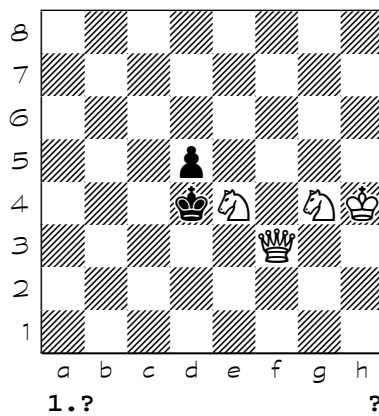
734



735

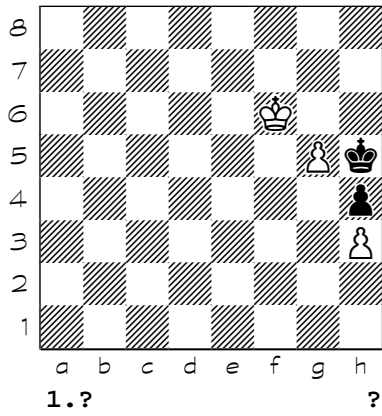


736

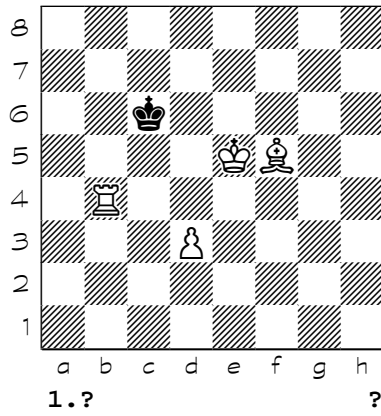


Chess diagrams

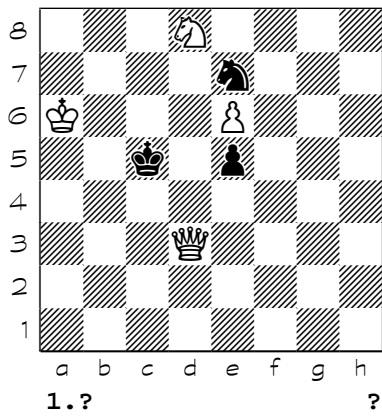
737



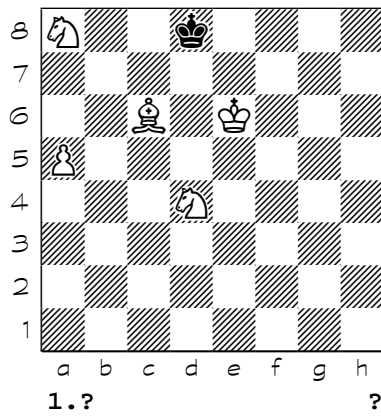
738



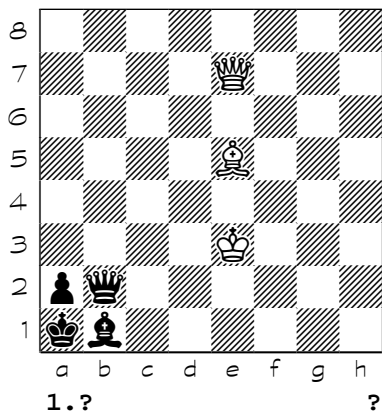
739



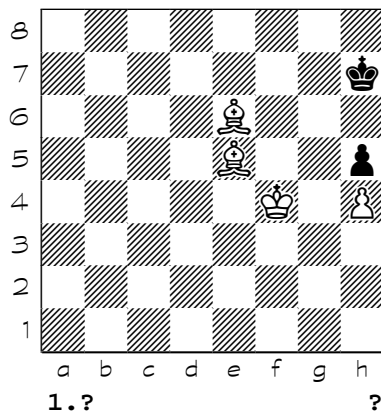
740



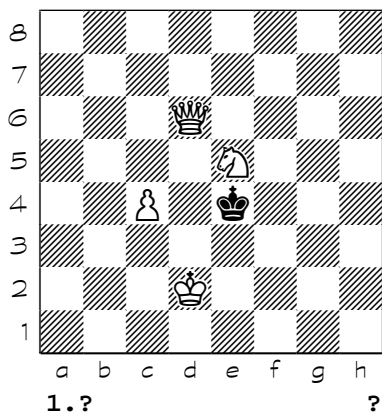
741



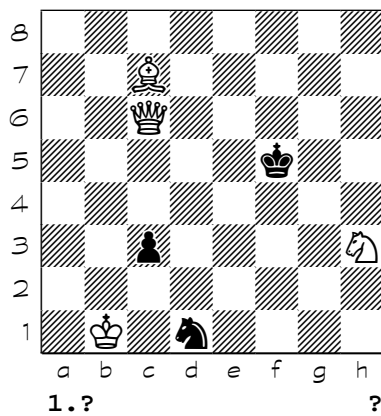
742



743

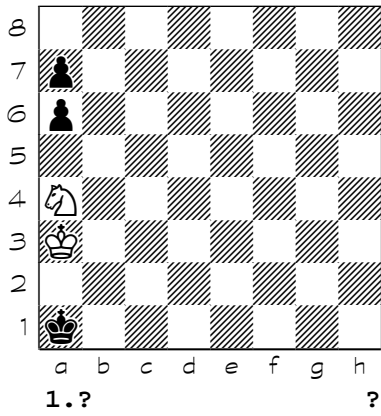


744

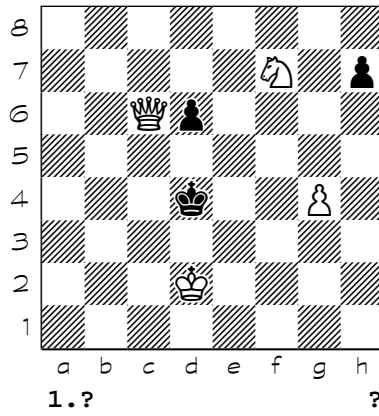


Chess diagrams

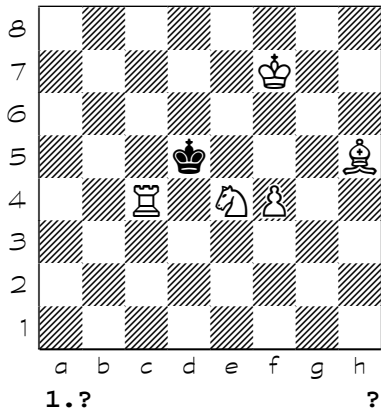
745



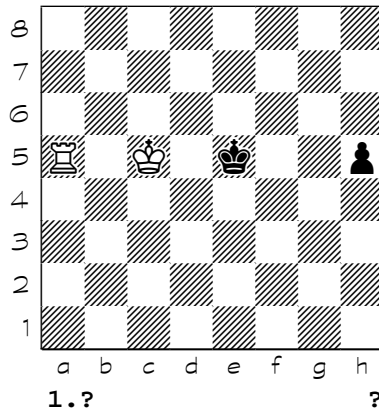
746



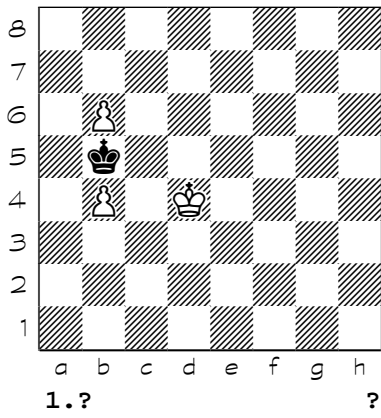
747



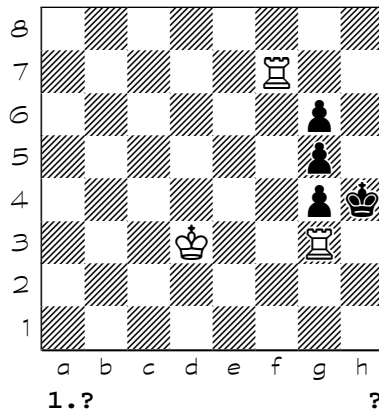
748



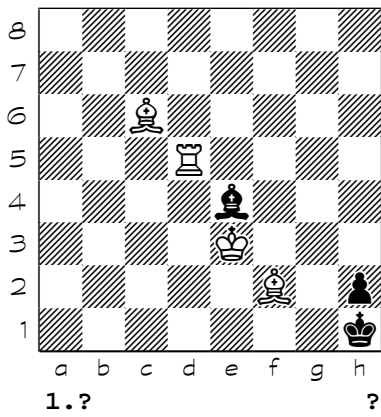
749



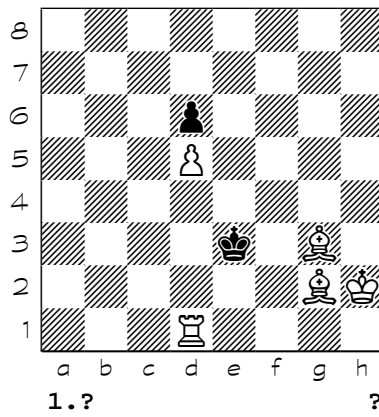
750



751

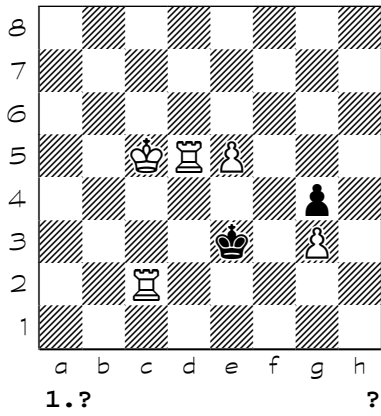


752

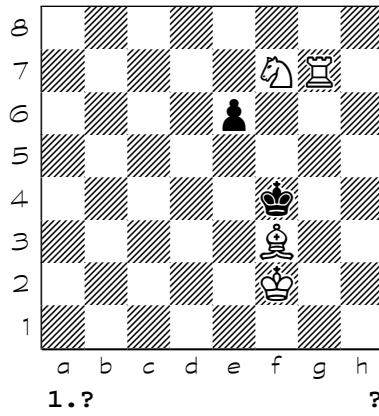


Chess diagrams

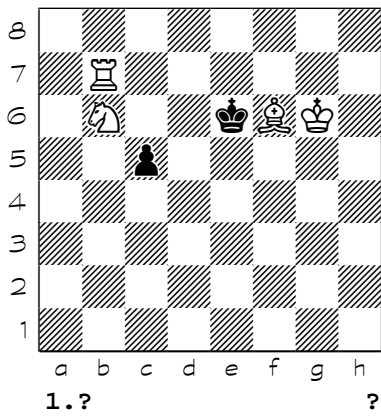
753



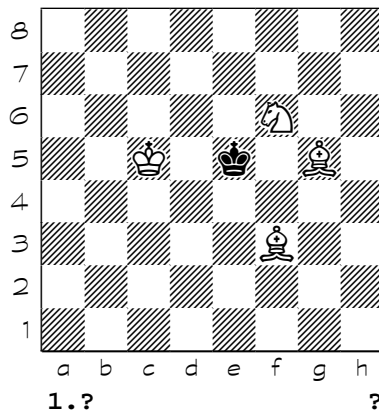
754



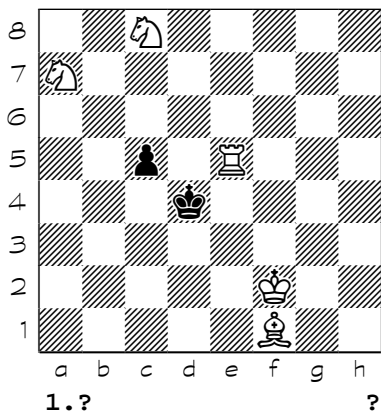
755



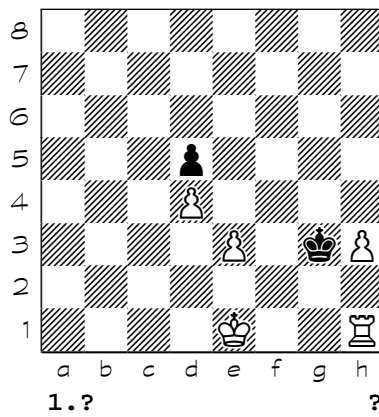
756



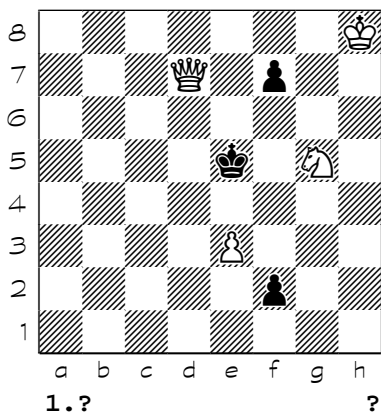
757



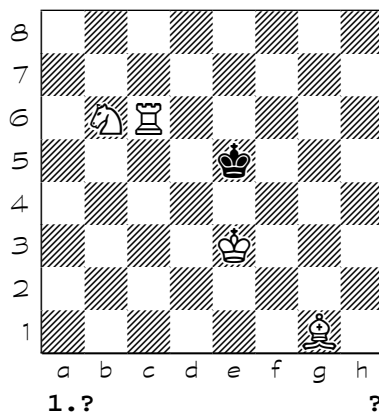
758



759

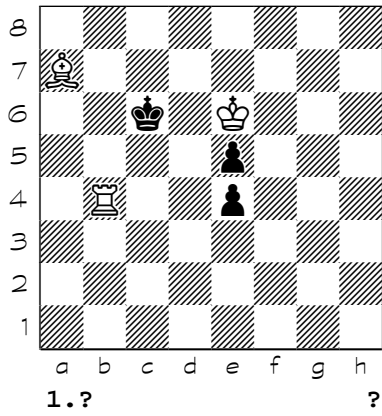


760

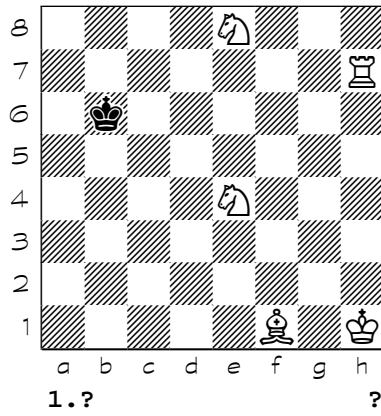


Chess diagrams

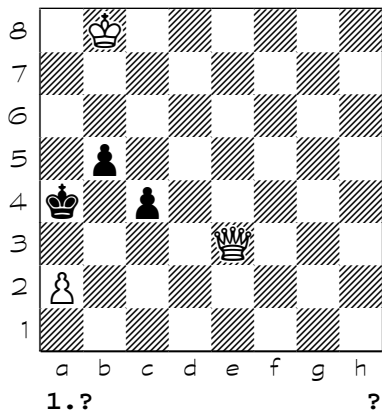
761



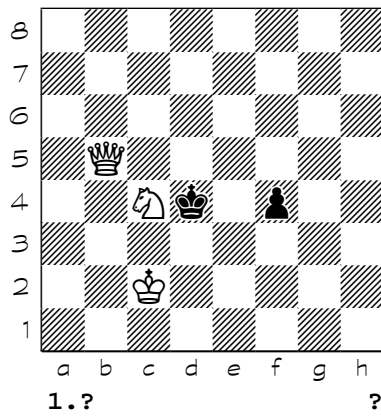
762



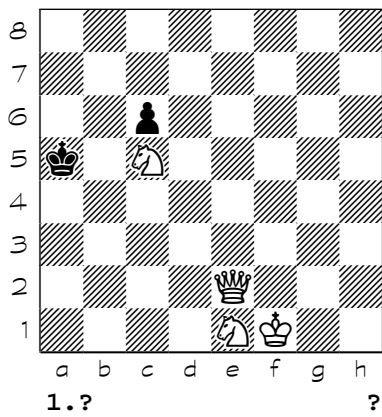
763



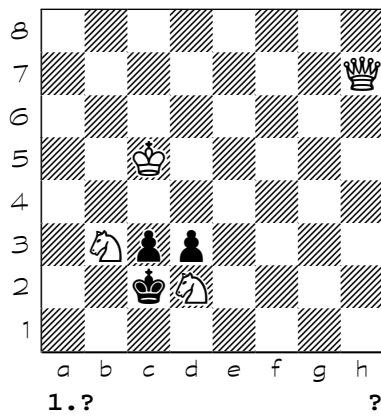
764



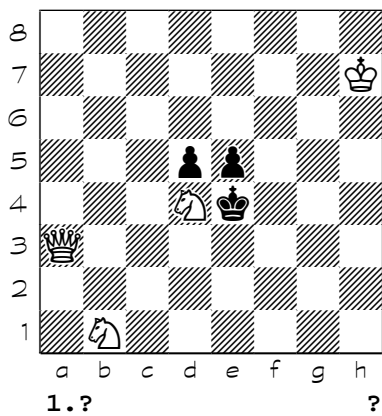
765



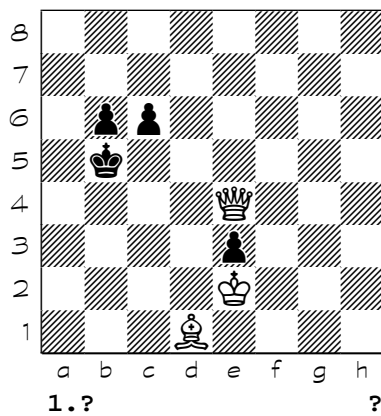
766



767

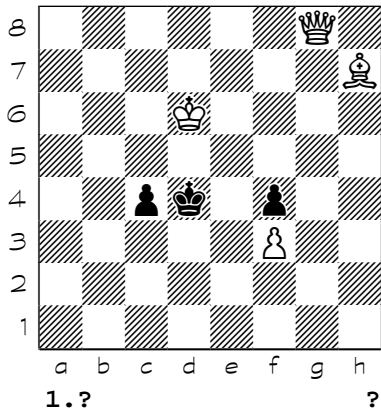


768

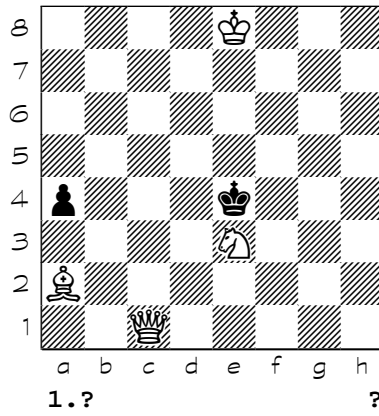


Chess diagrams

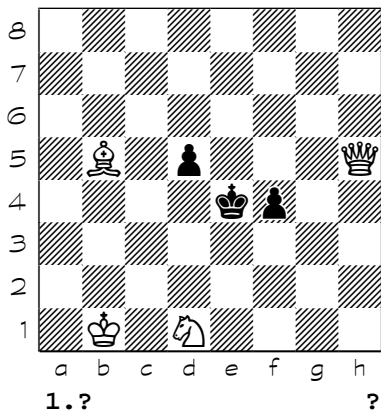
769



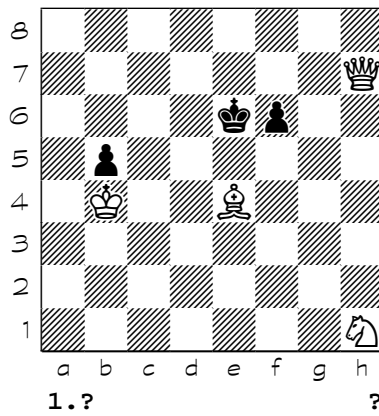
770



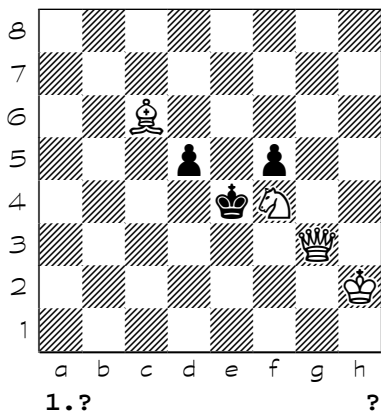
771



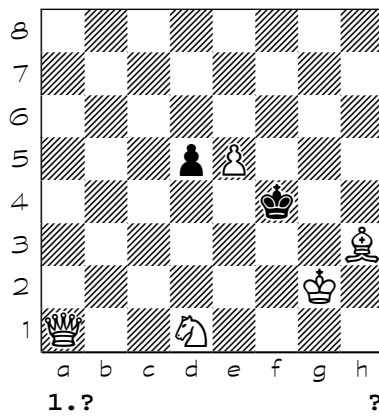
772



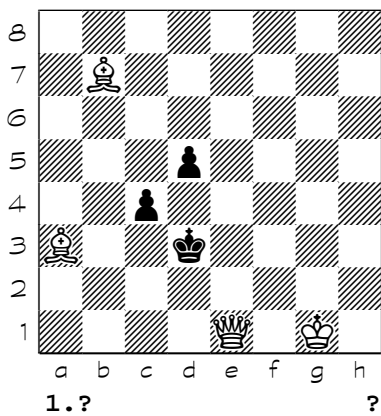
773



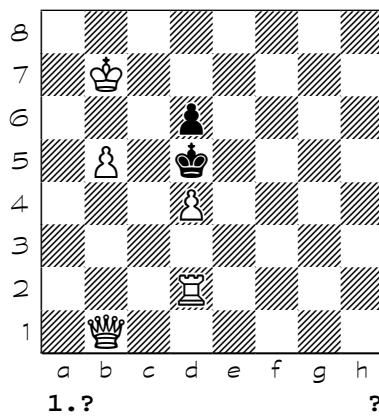
774



775

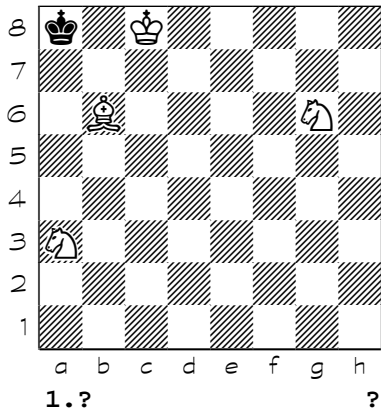


776

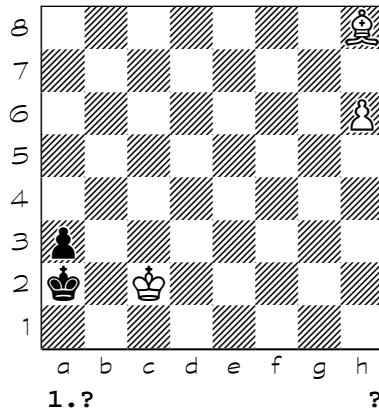


Chess diagrams

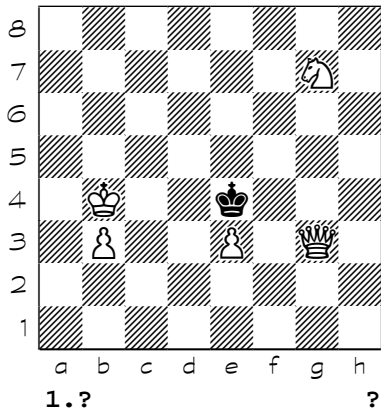
777



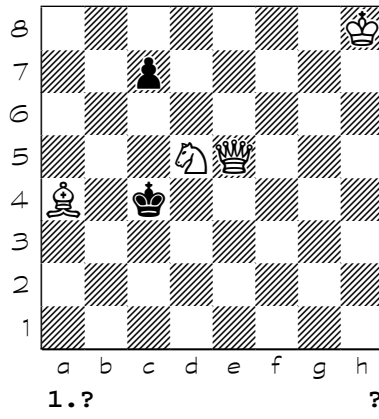
778



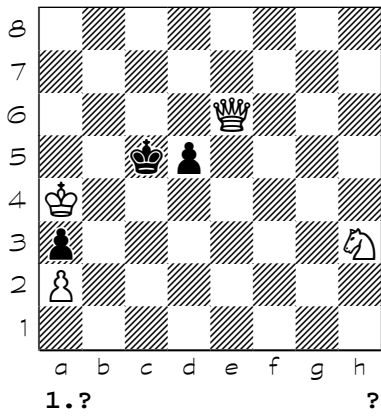
779



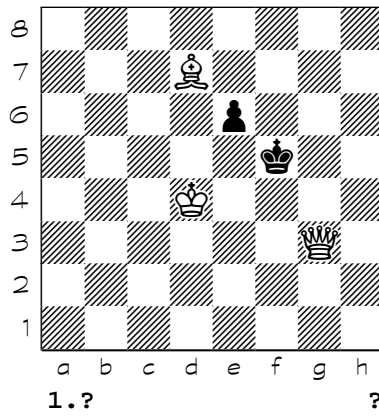
780



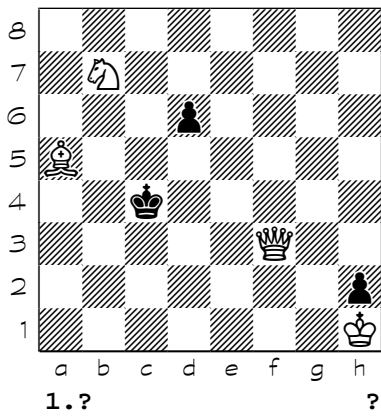
781



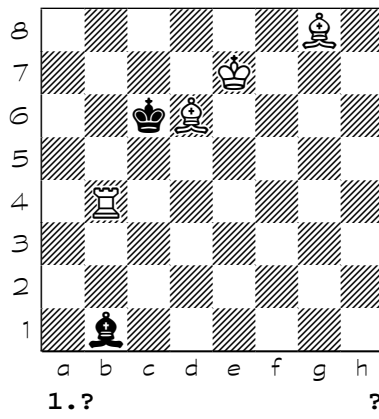
782



783



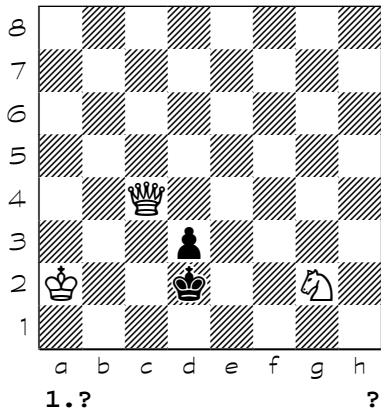
784



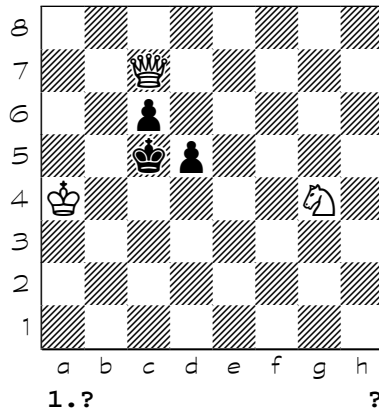


Chess diagrams

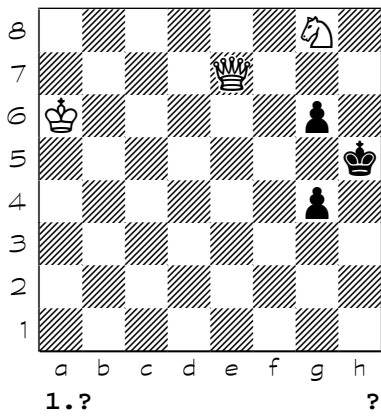
785



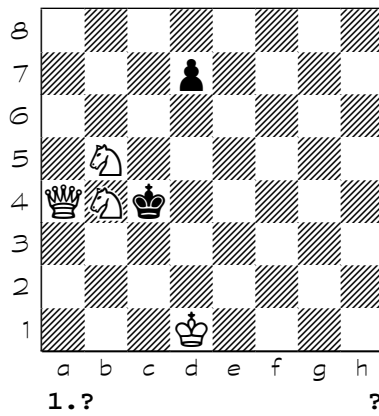
786



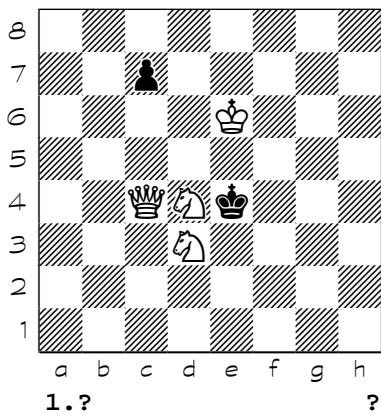
787



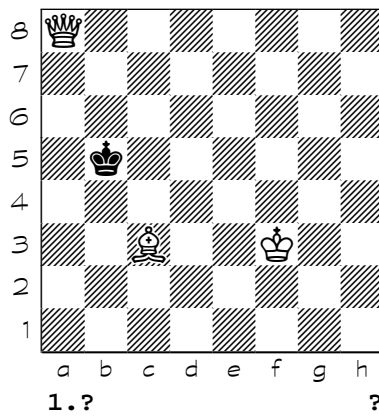
788



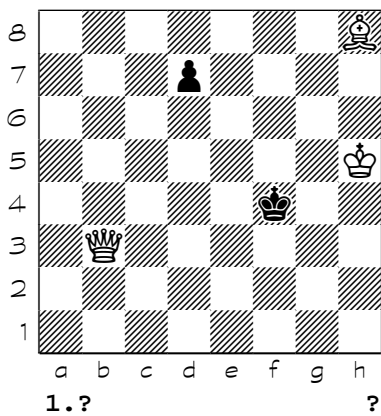
789



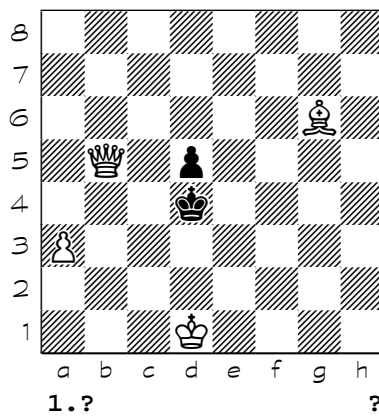
790



791

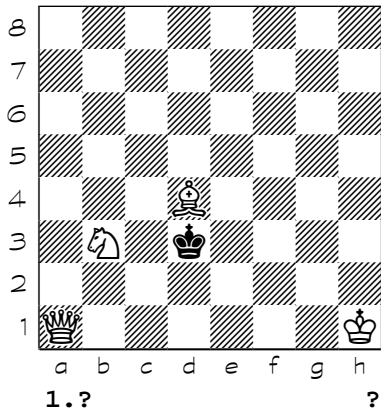


792

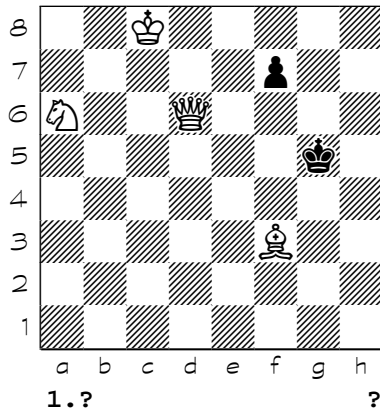


Chess diagrams

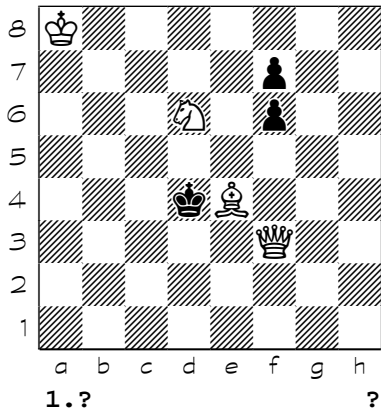
793



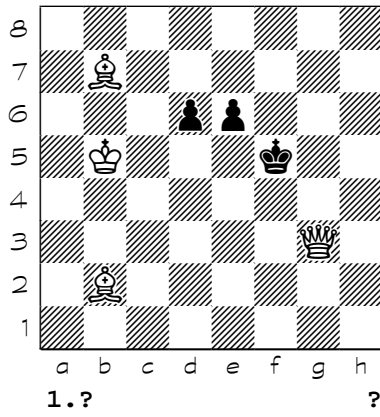
794



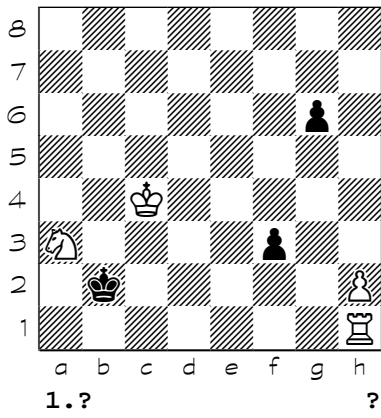
795



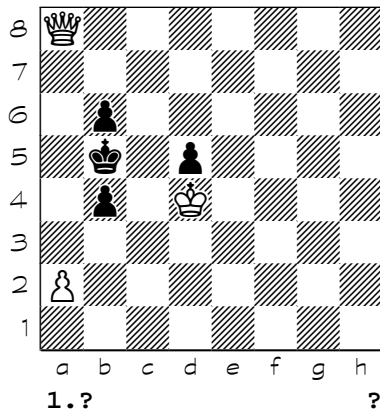
796



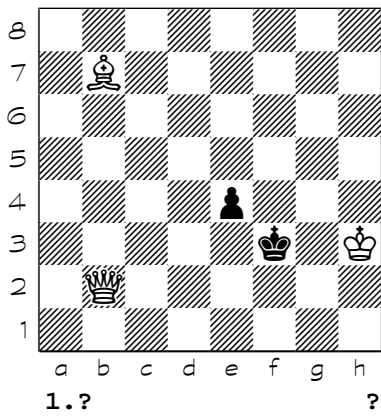
797



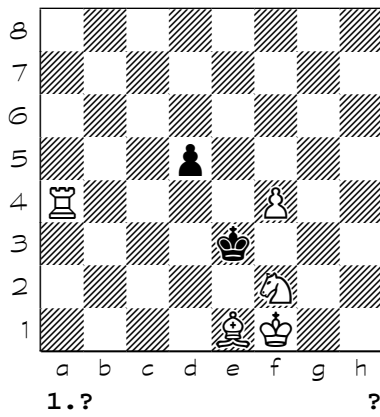
798



799



800



- (601) 1. Ke3 Kd5 2. Kd3 Ke5 3. Ne3 Kf4 4. Ne6+ Ke5 5. Nf8 Kf4 6. Ng6#
- (602) 1. Nd6+ Ke7 2. e3 Kf6 3. Nc8 Kf5 4. Ne7+ Kf6 5. Ng8+ Kf5 6. e4#
- (603) 1. Nhg6 Kf5 2. Kd5 Kf6 3. Bh6 Kf5 4. Ne7+ Kf6 5. Ng8+ Kf5 6. e4#
- (604) 1. Be5+ Kh7 2. Bd3+ Kg8 3. g6 Kf8 4. Kd7 Kg8 5. Bc4+ Kf8 6. g7#
- (605) {b} e4-e3 7#} 1. Bf7+ Kg5 2. Be8 Kf6 3. f4 Ke6 4. g4 Kf6 5. g5+ Ke6 6. f5#
- (606) 1. Bg3 Ke3 2. Kc3 Ke4 3. Bc6+ Ke3 4. Kc2 Kxd4 5. Bf2#
- (607) 1. Be7 Kd5 2. Kd3 Ke5 3. Kc4 Ke4 4. Bc5 Ke5 5. Bd4+ Ke4 6. d3#
- (608) 1. b4 Ka7 2. b5 Kb7 3. Kd7 Ka8 4. Kc7 Ka7 5. Kc8 Ka8 6. Nc7+ Ka7 7. b6#
- (609) 1. Kf3 Kg5 2. Kg2 Kg4 3. f3+ Kg5 4. Kh2 Kh5 5. Kh3 Kg5 6. f4+ Kh5 7. g4#
- (610) 1. Kb7 Kb5 2. d3 Ka4 3. e4 Kb5 4. Nb6 Kc5 5. e5 Kb5 6. a4+ Kc5 7. d4#
- (611) 1. Kc6 Kc4 2. Nd3 Kd4 3. Nh8 Kc4 4. Nf7 Kd4 5. Kb5 Kd5 6. Nf4+ Kd4 7. c3#
- (612) 1. Nc8 Kb5 2. Nb6 Kc5 3. e4 Kb5 4. Kb7 Kc5 5. e5 Kb5 6. a4+ Kc5 7. d4#
- (613) 1. Nde6 Ke5 2. Kc6 Kf6 3. Kd7 Ke5 4. Nh5 Kd5 5. Nf6+ Ke5 6. Ng4+ Kd5 7. e4#
- (614) 1. Kf6 Kh4 2. Nde2 Kg4 3. Nd2 Kh4 4. Nf1 Kg4 5. Nd4 Kh4 6. Nf5+ Kg4 7. Nh2#
- (615) 1. d4+ Kf4 2. Kd3 Kf3 3. Be6 Kf4 4. Ng2+ Kf3 5. Nh4+ Kf4 6. d5 Ke5 7. Ng6#
- (616) 1. Nd8 Kd5 2. Kd3 Ke5 3. e3 Kd5 4. Nf5 Ke5 5. Nh4 Kd5 6. e4+ Ke5 7. Ng6#
- (617) 1. e3 Ke5 2. Be7 Kd5 3. Kb6 Ke5 4. Kc7 Kd5 5. Bf8 Ke5 6. Bg7+ Kd5 7. e4#
- (618) 1. Bf8 Ke5 2. Be7 Kd5 3. c4+ Ke5 4. c5 Kd5 5. Bf8 Ke5 6. Bg7+ Kd5 7. e4#
- (619) 1. Kb6 Kd6 2. Bb4+ Kd5 3. Be1 Kd4 4. Bd2 Kd5 5. Be3 Kd6 6. Bc5+ Kd5 7. e4#
- (620) 1. Kg5 Kd6 2. Kf5 Kd5 3. Kf6 Kd6 4. Kf7 Kd5 5. Bf6 Kd6 6. Be5+ Kd5 7. e4#
- (621) 1. Bf7 Kf6 2. Bh5 Kg5 3. Be8 Kf6 4. f4 Ke6 5. g4 Kf6 6. g5+ Ke6 7. f5#
- (622) 1. Nc3 a6 2. Kb3 a5 3. Kc2 a4 4. Kc1 a3 5. Ne2 Kxa2 6. Kc2 Ka1 7. Nc1 a2 8. Nb3#
- (623) 1. Nf3 Kb4 2. Nd2 Ka4 3. Ka1 Kb4 4. Ka2 Ka4 5. Nf1 Kb4 6. Ne3 Ka4 7. b3+ Kb4 8. Nd5#
- (624) 1. Ka1 Kb4 2. Ka2 Ka4 3. Nb7 Kb4 4. Nd2 Ka4 5. Nf1 Kb4 6. Ne3 Ka4 7. b3+ Kb4 8. Nd5#
- (625) 1. Kc2 b4 2. c4 b3+ 3. axb3 Kb4 4. Kb2 Ka5 5. Ka2 Kb4 6. Na4 Ka5 7. Nb8 Kb4 8. Nc6#
- (626) 1. h4 Kxh4 2. Kh6 Kg4 3. Kg6 Kh4 4. Nc2 Kg4 5. Nxe3+ Kh4 6. Nd1 Kg4 7. Nf2+ Kh4 8. g3#
- (627) 1. Nh6 Ke5 2. Kc5 Ke6 3. Kc6 Ke5 4. c3 Ke6 5. Kc7 Ke5 6. Nf7+ Ke6 7. Ng5+ Ke5 8. d4#
- (628) 1. Nc6+ Ka4 2. Nc4 Kb5 3. Nb6 Ka6 4. e4 Kb5 5. Kb7 Kc5 6. e5 Kb5 7. a4+ Kc5 8. d4#
- (629) 1. Nd5 Kc4 2. Kc6 Kd4 3. Nd6 Ke5 4. c3 Ke6 5. d3 Ke5 6. f4+ Ke6 7. f5+ Ke5 8. d4#
- (630) 1. Nc5 Kc7 2. Kb5 Kc8 3. N3a4 Kc7 4. Nb6 Kd6 5. Na8 Kd5 6. Nc7+ Kd6 7. Ne8+ Kd5 8. c4#
- (631) 1. Kc4 Kf5 2. Kd5 Kg6 3. g4 Kf7 4. g5 Kg6 5. Ne7+ Kf7 6. Nc6 Kg6 7. Kd6 Kf5 ( 7... Kf7 8. Ne5#) 8. Ne7#
- (632) 1. Kc6 Kf5 2. Nge5 Ke4 3. Kc5 Kf5 4. Kd6 Ke4 5. Nh4 Kd4 6. Nf5+ Ke4 7. Ng3+ Kd4 8. e3#
- (633) 1. Kd6 Kf6 2. Nfg4+ Kf5 3. Kd7 Ke4 4. Kc6 Kf5 5. Kd6 Ke4 6. Nf6+ Kf5 7. Nh5 Ke4 8. Ng3#
- (634) 1. Ne6 Kg3 2. Bb1 Kh4 3. Kh2 Kh5 4. Kh3 Kh6 5. f4 Kh5 6. g4+ Kh6 7. g5+ Kh5 8. Ng7#
- (635) 1. Ka4 Kc5 2. Ka5 Kd5 3. b3 Kc5 4. b4+ Kd5 5. b5 Kc5 6. Be8 Kd5 7. Bf7+ Kc5 8. d4#
- (636) 1. Kf6 Kd5 2. e3 Kd6 3. d4 Kd5 4. d3 Kd6 5. Kf7 Kd5 6. Nc7+ Kd6 7. Nb5+ Kd5 8. e4#
- (637) 1. Be8 Kd5 2. c3 Kd6 3. Kf6 Kd5 4. d3 Kd6 5. b4 Kd5 6. Nc7+ Kd6 7. Nb5+ Kd5 8. c4#
- (638) 1. Bd8 Kc6 2. Ke6 Kxc5 3. Kd7 Kd5 4. f4 Kc5 5. Bc7 Kd5 6. Bb8 Kc5 7. Ba7+ Kd5 8. c4#
- (639) 1. Ne6 Kd5 2. Bb5 Kd6 3. e3 Kd5 4. Ke7 Ke5 5. Bd3 Kd5 6. b5 Ke5 7. f4+ Kd5 8. e4#
- (640) 1. Bb6 Kd5 2. Bd8 Ke6 3. Kc5 Kf5 4. Kd4 Ke6 5. Bh4 Kf5 6. Nd6+ Ke6 7. Ne8 Kf5 8. Ng7#
- (641) 1. Kc2 Kb5 2. Kb3 Ka6 3. Ka3 Kb5 4. c4+ Ka6 5. c5 Kb5 6. Nc3+ Ka6 7. Nd5 Kb5 8. Nc7#
- (642) 1. Nf6 Ke5 2. N6d5 Kd4 3. Kc8 Kc5 4. Kc7 Kd4 5. Kc6 Ke5 6. Ng2 Kd4 7. Ne1 Ke5 8. Nf3#
- (643) 1. Bf7 Ke3 2. Bh5 Kf4 3. Ke6 Ke3 4. Kd5 Kf4 5. Bd1 Ke3 6. Nf5+ Kf4 7. Nh4 Ke3 8. Ng2#
- (644) 1. Kg5 Kd4 2. Kf5 Ke3 3. Bc4 Kd4 4. Bf1 Ke3 5. c4 Kf3 6. Nd3 Ke3 7. Ne1 Kd4 8. Nc2#
- (645) 1. Ne5 Kxe5 2. Kc5 Ke6 3. Be8 Ke5 4. f3 Ke6 5. Kd4 Kd6 6. f4 Ke6 7. f5+ Kd6 8. e5#
- (646) 1. Bc4 Ka4 2. Ba6 Ka3 3. Ba5 Ka4 4. Bb6 Ka3 5. c4 Kb4 (5... Ka4 6. Kb2 Kb4 7. a3+ Ka4 8. Bb5#) 6. Kb2 Ka4 7. Bb5+ Kb4 8. a3#
- (647) 1. Bh4 Ke5 2. d3 Kd6 3. Bd8 Kc6 4. Bc8 Kd6 5. d4 Kc6 6. e4 Kd6 7. e5+ Kc6 8. d5#
- (648) 1. Bh6 Kf6 2. Bf8 Kf5 3. g3 Kf6 4. Ke4 Ke6 5. Be8 Kf6 6. g4 Ke6 7. d5+ Kf6 8. g5#
- (649) 1. Nh5 Kxh5 2. Kg2 Kg4 3. Ne2 Kh5 4. Kh3 Kh6 5. Bc3 Kh5 6. Bb4 Kh6 7. Bf8+ Kh5 8. Ng3#
- (650) 1. Rb4 Kxa5 2. Kb7 a6 3. Rb6 Ka4 4. Kxa6 Kxa3 5. Ka5 Ka2 6. Ka4 Ka1 7. Kb3 Kb1 8. Rc6 Ka1 9. Rc1#

- (651) 1. Ra8+ Kxa8 2. c8=Q+ Ka7 3. Qd7+ Ka6 4. Qd3+ Ka5 5. Qc3+ Rb4 6. Qd2 Ka6 7. Qxb4 Ka7 8. Qb7#
- (652) {b} c5-e6}
- (653) 1. Be1 Ke2 (1... Kd4 2. Nc3 e4 3. Qd5+ Ke3 4. Qxe4#) (1... e4 2. Qc3+ Ke2 3. Qe3+ Kxd1 (3... Kf1 4. Qf2#) 4. Qd2#) 2. Nc3+ Kxe1 3. Qg2 e4 4. Qe2#
- (654) 1. Ng3+ Kg1 2. Ne2+ Kh1 3. Nc3 Kg1 4. Bg3 Kh1 5. Ne4 Kg1 6. Bf2+ Kh1 7. Ng3#
- (655) 1. Bc3 Ka3 2. Bb4+ Ka2 3. Nc1+ Kb2 4. Kd3 Ka1 (4... Kxc1 5. Ba3#) 5. Bc3#
- (656) 1. Qc3+ Rb3 2. Qc5+ Rb4 3. Qd6 c5 4. Qxc5 Kb3 5. Qc2+ Ka3 6. Qc3+ Rb3 7. Qc5+ Rb4 8. Qd6 Kb3 9. Qd3#
- (657) 1. Qg3+ Ke2 2. Bf3+ Ke3 3. Bb7+ Kd4 (3... Ke2 4. Ba6+ Nd3 5. Bxd3#) 4. Qd6+ Kc4 5. Ba6#
- (658) \*
- (659) \*
- (660) {b} -e2,+Se1 6#}
- (661) 1. Bg6 Nc7 2. Re1 Ne6 3. Bf5 Nc7 4. Kh6 Kf7 5. Kg5 Nb5 6. Bg6+ Kg7 7. Re7+ Kf8 8. Rd7 Nc3 9. Kf6 Ne4+ 10. Bxe4 Ke8 11. Bf5 Kf8 12. Rd8#
- (662) {b} e4-f2} 1. Bf5 Kh5 2. Nh3 Kh6 3. Nf2 Kh5 4. Bg6+ Kh6 5. Ng4#
- (663) {b} Sc1}
- (664) 1. Bb8 Kc4 (1... Ke3 2. Nf4 Kf3 3. Re2 Kg3 4. Ne6+ Kh3 5. Rh2#) 2. Ke4 Kc5 3. Nd4 Kc4 4. Bd6 Kc3 5. Rc2#
- (665) 1. Be2 Ke4 (1... Kd5 2. Rc4 Kd6 3. Bf3 Kd7 4. Nb6+ Kd6 5. Rc6#) 2. Rd3 Kf4 3. Bh5 Ke4 4. Nc5+ Kf4 5. Rf3#
- (666) 1. Kf1 e3 (1... Kd4 2. Qb4+ Kd3 3. Bb3 e3 (3... Ke3 4. Qc3#) 4. Ne5#) (1... Kd6 2. Qb6+ Kd7 3. Be6+ Ke8 4. Qb8#) 2. Be6 e2+ 3. Kxe2 Kd4 4. Qb4#
- (667) 1. Qg6 Kf4 (1... Kd5 2. Qb6 Ke5 3. Ke3 Kd5 4. Bg8+ Ke5 5. Qe6#) 2. Qg7 Kf3 3. Qg5 Kf2 4. Be4 Kf1 5. Qg2#
- (668) 1. Rd6 Bf4 2. Rd4 Be3 3. Re4 Bh6 4. Re5 Kh7 5. Rh5 Kh8 6. Rxh6#
- (669) 1. Qh4 d4+ 2. Kd3 f5 3. Qh1+ Rf1 4. Qg2 Rf2 5. Qg1+ Rf1
- (670) 1. Ne4 Kf5 2. N4f6 Ke5 3. Bg8 Kf5 4. Kd4 Kg6 5. Kd5 Kf5 6. Bh7#
- (671) 1. Rd5 Rc2+ 2. Bc5 Rd2 3. Nd3 Rxd3 4. Bd4 Rxd4 5. Rxd4 Kxa7 6. Ra4#
- (672) 1. Bh1 Kg3 (1... e5 2. Nd5 Kg3 3. Nde3 e4 4. Nf1+ Kh3 5. Nf2#) 2. Ne4+ Kh3 3. Nd2 e5 4. Nf1 e4 5. Nf2#
- (673) 1. Rf8 Kxe4 (1... Ke2 2. Bd3+ ({aeoaeue} 2. Bh6 Kd1 3. Rf1+ Ke2 4. Bd3#) 2... Kd2 3. Bh6+ Ke1 4. Rf1#) (1... Kd2 2. Bh6+ ({aeoaeue} 2. Bd3 Kc1 3. Rf1+ Kd2 4. Bh6#) 2... Ke1 3. Bd3 Kd1 4. Rf1#) 2. Bd4 Kxd4 3. Re8 Kc4 4. Re4#
- (674) 1. b4+ cxb4+ 2. Kb2 b3 3. Kc3 b2 4. Kc4 b1=Q 5. Nb7#
- (675) 1. Ne5 Bd5 2. Kh2 Bg8 (2... Be6 3. Nc6 Bb3 4. Qc1+ Ka2 5. Nb4#) 3. Nc6 e3 4. Nb4 Ba2 (4... Bf7 5. Qc1#) 5. Qxa2#
- (676) 1. Nc6 Ke2 2. Ne5 Ke1 3. Kb4 Ke2 4. Kc3 Ke1 5. N5g4 Ke2 6. Ng5 Ke1 7. Nh3 Ke2 8. Ne5 Ke1 9. Nd3+ Ke2 10. Ng1#
- (677) 1. Nc6 Kg4 2. Nd4 Kh4 3. Ke7 Kg4 4. Kf6 Kh4 5. Nde2 Kg4 6. Nd2 Kh4 7. Nf1 Kg4 8. Nd4 Kh4 9. Nf5+ Kg4 10. Nh2#
- (678) 1. Nf2 Ke1 2. Bd4 Kf1 3. Kd2 Kg1 4. Ng4+ Kf1 5. Nh2#
- (679) 1. Bc5 Kb8 2. Nc6+ Kc7 3. Na5 Kb8 (3... Kd8 4. Bb6#) 4. d8=Q#
- (680) 1. Bb7 Kb5 2. Ra3 Kc5 3. Ba6 d4 4. Ra5#
- (681) 1. Kd6 Kd4 2. Bc2 Kc4 3. Kc6 Kd4 4. Nf3+ Kc4 5. d3#
- (682) {b} f2-d2 c) a2=a1} 1. Qb8 Kd3 2. Qb3+ Kd2 3. Nf5 d3 (3... Kc1 4. Nxd4 Kd2 5. Qc2#) 4. Qb2+ Kd1 5. Ne3# {iiceoeey a) iioaeieiaaia a "Niaia" >=7 2002 , iiaoidaia H.Brouzus"Schach" >=4 2004}
- (683) 1. Rg6
- (684) 1. Ka5 Kg8 2. h7+ Kh8 3. Qf7 Qg5 4. Ka4 Qg7 5. Bd4 Qxd4 6. Qg8#
- (685) 1. Ka3 Nc8 2. Ka2 Na7 3. Qd5 Nb5 (3... Nc8 4. Ra3+ Na7 5. Rxa7+ Kxa7 6. Qa5#) 4. Rxb5 Ka7 5. Ra5+ Kb6 6. Qc5#
- (686) 1. Ra4 Kd5 2. Kf4 Kc5 3. Ke3 Kd5 4. Ra5#
- (687) \*

- (688) \*
- (689) 1. e4 g5 2. e5 g4 3. e6 g3 4. e7 g2 5. e8=Q+ Kf2 6. Qf8+
- (690) \*
- (691) \*
- (692) \*
- (693) \*
- (694) \*
- (695) 1. Rc1 Kd3 2. Ne5+ Kd4 3. Nc6+ Kd3 4. Rc5 Kd2 (4... d4 5. Nb4+ Kd2 6. Rc2#) 5. Nb4 d4 6. Rc2#
- (696) 1. Qe3 Kc6 (1... f6 2. Qe4+ Kc5 (2... Ke6 3. Qb7 f5 4. Qf7#) 3. Ka4 f5 4. Nb7#) 2. Qxe5 f5 3. Qxf5 Kc7 4. Qc8#
- (697) 1. Rb7 Rc5 2. Rbg7 Rb5 3. Rg8 Rc5 4. R2g4+ Kh5 5. Rg3 Rc2+ 6. Kh3 Rc6 7. R8g4 Rc4 8. Rxc4 Nc3 9. Rh4# {iioaeeciaaia daiaa 7 Iaiideae Adiiia 15.12.1995}
- (698) {b} f5-b7} 1. Nf6 Kd3 2. Rd5+ Kc2 3. Rc7+ Kb2 4. Rb5+ Ka1 5. Ra7#
- (699) 1. Ng1 g4 2. Nh3 gxh3 3. Bh2 Kxh2 4. Nd2 Kh1 5. Nf1 h2 6. Ng3#
- (700) \*
- (701) 1. Re1 Kd6 (1... Kd5 2. Kb4 Kd4 3. Re6 Kd5 4. Nc7+ Kd4 5. Re4#) (1... Kb6 2. Re6+ Ka7 3. Nc7 Kb8 4. Nb5 Kc8 5. Re8#) 2. Kb5 Kd5 3. Re4 Kd6 4. Kc4 Kc6 5. Re6#
- (702) 1. Kc7 Ke5 2. Qb4 Ke6 3. Qc4+ Kf5 (3... Ke7 4. Bh5 f5 5. Qf7#) 4. Qg4+ Ke5 5. Qe4#
- (703) \*
- (704) 1. Ke5 Kf7 2. Kd5 Kg7 3. Kd6 Kf7 4. Kd7 Kf8 5. Ke6 Ke8 6. Bg6+ Kf8 7. Bh6+ Kg8 8. Bb1 Kh8 9. Kf6 Kg8 10. Kg6 Kh8 11. Bg7+ Kg8 12. Ba2#
- (705) 1. h4 Rf2 2. h5 Rf4 3. h6 Rf2 4. h7 Rf3 5. Ke7 Re3+ 6. Ne6 Rxe6+ 7. Qxe6 Kg7 8. Qf6#
- (706) 1. Qc5 Ka3 2. Qxd5 Ka4 3. Qc5 Ka3 4. Qc2 b3 5. Qc5+ Ka4 6. Qb6 Ka3 7. Qa5#
- (707) 1. Be8 Nb4 2. Bh5 e1=N 3. Bg6 Nf3 4. Be4 Nd3 5. Bxf3#
- (708) 1. O-O-O a3 (1... Ka2 2. Kc2 b3+ 3. Kc3 a3 4. Nd3 b2 5. Kc2 b1=Q+ 6. Rxb1 a4 7. Nb4#) 2. Rd3+ Ka2 3. Na4 b3 4. Nc3+ Ka1 5. Rd1 a2 6. Na4 b2+ 7. Nxb2 a4 8. Kc2#
- (709) 1. Ba4 Ne3 2. Bb5 Ng4 3. Kg3 Ne3 4. Be2+ Ng4 5. Bxg4#
- (710) 1. Kf4 Ke2 2. Kg3 Kd2 3. Kf2 Kd3 4. Kf3 Kd2 5. Ne1 Kxe1 6. Bc3#
- (711) 1. Ng2 Kf5 2. Nh4+ Ke5 3. Bd4+ Kf4 4. Bc5 Ke5 5. Bd6#
- (712) 1. Kc2 b1=Q+ 2. Kxb1 Bc3 3. Kc2 Bb4 4. Qa6+ Ba5 5. Qc4 b5 6. Qb3#
- (713) 1. Bd3 Nb3 (1... Kg8 2. h7+ Kh8 (2... Kf7 3. h8=Q Nc2 4. Rh7#) 3. Rg1 Nc2 4. Rg8#) (1... Nc2 2. Bxc2 Kg8 3. Rf1 Kh8 4. Rf8#) 2. Re1 Kg8 3. Bg6 Kf8 4. Re8#
- (714) 1. O-O-O c3 2. Rd4 Ka4 3. Rd5 b3 4. Nc6 b2+ 5. Kc2 b1=Q+ 6. Kxb1 Kb3 7. Rc5 c2+ 8. Kc1 Ka3 9. Kxc2 Ka2 10. Ra5#
- (715) {b}d4-e1}
- (716) 1. Nfd3 Ne4 2. Nf3 Nd2+ 3. Nxd2 Kh2 4. Nf3+ Kh3 5. Nf2#
- (717) 1. Bb6 Kb8 2. Nc7 Kc8 3. a7 Kb7 4. a8=Q#
- (718) 1. Qb4 e4+ (1... Kd5 2. Bxc4+ Kd4 3. Ba2+ Kd3 4. Bb1#) 2. Kf4 Kd5 3. Qe7 c5 4. Qd7#
- (719) 1. Qg1 Kf3 (1... Ke4 2. Qg3 Kd4 3. Qd3+ Kc5 4. Be7#) (1... e4 2. Qf2+ Kg4 3. Qe3 Kf5 4. Qg5#) 2. Bg5 e4 3. Bf1 e3 4. Qg2#
- (720) 1. Qg1 Ke4 (1... Kd2 2. Ne5 Kc3 3. Nc4 Kd3 4. Qe3#) (1... Kc3 2. Qf2 Kd3 3. Kc5 Ke4 (3... Kc3 4. Qc2#) 4. Qf3#) 2. Kc5 Kf4 3. Nf6 Ke5 4. Qg5#
- (721) 1. Bf8 Kh3 (1... f4 2. Bh6 Kh3 3. Bxf4 Kh4 4. Qh2#) (1... Kf4 2. Qg2 Ke3 (2... Ke5 3. Qg5 Ke6 4. Qe7#) 3. Bd6 f4 4. Bc5#) 2. Qf2 f4 3. Qg1 Kh4 4. Qg4#
- (722) 1. Kg2 c4 (1... cxd4 2. Rb6 Ke5 3. Kf3 Kd5 4. Qb5#) 2. Qc3 Ke4 3. Ra5 Kf4 4. Qf3#
- (723) 1. Bc4 Ke4 2. Be2 Ke5 3. Ba6 Ke4 4. Bb7+ Ke5 5. Kc6 Ke4 6. Kd6#
- (724) 1. Rh4+ Kc5 (1... Kc3 2. Nf5 Kxd3 3. Rd4+ Kc3 4. Rc2#) 2. Nc8 Kd5 3. Re2 Kc5 4. Re5#
- (725) 1. Qh3 Kf4 2. Qg2 e4 (2... Kf5 3. Be3 e4 4. Qg5#) 3. Kf6 e3 4. Bh2#
- (726) {b}g3-h6 5# c) =b)+black ph5 6#} 1. Bf3 Kh3 2. Kg5 Kh2 3. Ne2+ Kh3 4. Ng1#
- (727) 1. Ngf4 Kh4 2. O-O Kg3 3. Rf3+ Kh4 4. g3#
- (728) {b}g4<>f6,-g2 5#} 1. Kh4 Ke3 (1... Ke5 2. c3 Kf4 3. Ng4 Kf5 4. Rf6#) 2. Rd6 Kf2 (2... Kf4 3. Ng4 Kf5 4. Rf6#) 3. Ng4+ Ke1 4. Rd1#
- (729) 1. Kg2 f3+ 2. Kh3 f2 3. Bg2 f1=Q 4. Rb7#

(730) 1. Nd5 d6 (1... Be2 2. Qd4+ Kc2 3. Qc3+ Kd1 4. Ne3#) (1... Kc4 2. Nc3 d5 (2... Kb3 3. Qb2+ Kc4 4. Qb5#) 3. Qd4+ Kb3 4. Qa4#) 2. Nc3 d5 3. Kb2 Kc4 4. Qd4#

(731) 1. Bf6 Ke3 2. g4 Kf4 3. Kf2 Ke4 4. c4 Kf4 5. e3+ Ke4 6. Bf5#

(732) 1. g5 g6 2. Kg4 Ke4 3. Qd7 Ke5 4. Kg3 Ke4 5. Qd6 Kf5 6. Qd5#

(733) 1. Rb7 Ka5 2. Kxa7 Ka4 3. Kb6 Kb4 4. Rc7 Ka4 5. Rc4#

(734) 1. Kd6 e5 2. dxe5 d4 3. e6 d3 4. e7 d2 5. Rf8#

(735) 1. Rh4 Ng6 2. fxc6 fxc6 3. Kxc6 Kf8 4. Re4 Kg8 5. Re8#

(736) 1. Qc3+ Kxe4 2. Qe3+ Kf5 3. Kh5 d4 4. Qe5#

(737) 1. g6 Kh6 2. g7 Kh7 3. Kf7 Kh6 4. g8=Q Kh5 5. Qg6#

(738) 1. Be6 Kc5 (1... Kc7 2. Kd5 Kd8 3. Kd6 Ke8 4. Rb8#) 2. Rb7 Kc6 3. Bd5+ Kc5 4. d4#

(739) 1. Nb7+ Kb4 2. Na5 Kc5 3. Qc4+ Kd6 4. Nb7#

(740) 1. a6 Kc8 2. Ke7 Kb8 3. Bb7 Ka7 4. Nc6#

(741) 1. Qg5 Bc2 2. Qg1+ Bb1 3. Bg7 Qc3+ (3... Qxc7 4. Qxc7#) 4. Bxc3#

(742) 1. Kf5 Kh6 2. Kf6 Kh7 3. Kf7 Kh6 4. Bg7+ Kh7 5. Bf5#

(743) 1. Qf6 Kd4 2. Qe7 Ke4 3. Qg5 Kd4 4. Qe3#

(744) 1. Nf4 c2+ 2. Kc1 Kg4 (2... Kg5 3. Qg6+ Kh4 4. Bd8#) 3. Qg2+ Kf5 4. Qg6#

(745) 1. Nc3 a5 2. Kb3 a4+ 3. Kc2 a6 4. Kc1 a5 5. Kc2 a3 6. Kc1 a4 7. Nd5 Ka2 8. Kc2 Ka1 9. Nb4 a2 10. Kc1 a3 11. Nc2#

(746) 1. g5 h5 (1... d5 2. Qc8 h5 3. gxh6 Ke4 4. Qg4#) 2. gxh6 d5 3. Qc8 Ke4 4. Qg4#

(747) {b} f4-e5} 1. Nd2 Kd6 2. Bg4 Kd5 3. Be6+ Kd6 4. Ne4#

(748) 1. Kc4+ Kf4 (1... Ke6 2. Rxh5 Kd6 3. Rd5+ Ke6 4. Kc5 Ke7 5. Rd6 Kf7 6. Kc6 Ke7 7. Kc7 Ke8 8. Rd7 Kf8 9. Kd8 Kg8 10. Ke8 Kh8 11. Kf7 Kh7 12. Rd6 Kh8 13. Rh6#) 2. Rxh5 Ke4 3. Rd5 Ke3 4. Rd4 Ke2 5. Rd3 Kf2 6. Kc3 Ke2 7. Kc2 Ke1 8. Rd2 Kf1 9. Kd1 Kg1 10. Ke1 Kh1 11. Kf2 Kh2 12. Rd3 Kh1 13. Rh3#

(749) {b} a1=b1} 1. b7 Ka6 (1... Kc6 2. b8=Q Kd7 3. Kd5 Ke7 4. Qf4 Kd7 5. Qf7+ Kc8 6. Kc6 Kb8 7. Qb7#) 2. b8=R Ka7 3. Rb5 Ka6 4. Kc5 Ka7 5. Kc6 Ka8 6. Kc7 Ka7 7. Ra5#

(750) 1. Rg1 g3 2. Rh7+ Kg4 3. Ke4 g2 4. Rxc2#

(751) {ii aaoido 5#} 1. Rd1+ (1. Kxe4 Kg2 2. Ke3 Kh3 3. Rh5+ (3. Rd4 h1=Q 4. Rh4#) 3... Kg4 4. Bf3#) 1... Kg2 2. Bxe4+ Kh3 3. Bf3 h1=Q 4. Rxh1#

(752) 1. Kg1 Ke2 2. Rd4 Ke3 3. Bf2+ Ke2 4. Bh3 Kf3 {Ead~~eineee daai~~ee 1999 ?} 5. Bg4#

(753) {a} iadanoaeoue a5} 1. Rdd2 Ke4 (1... Kf3 2. Rc3+ Ke4 3. Rf2 Kxe5 4. Re3#) 2. Rf2 Kd3 3. Rce2 Kc3 4. Re3#

(754) 1. Rg6 (1. Rh7 Kf5 2. Rh6 e5 3. Kg3 e4 4. Bg4#) 1... Kf5 2. Rh6 e5 3. Kg3 e4 4. Bg4#

(755) 1. Rd7 (1. Rb8 Kd6 2. Rc8 c4 3. Rxc4 Ke6 4. Rc6#) (1. Rc7 Kd6 2. Rc8 c4 3. Rxc4 Ke6 4. Rc6#) 1... c4 2. Rd8 c3 3. Nd5 c2 4. Nf4#

(756) {a} f3-g4 1. Kd5 e4 2. Cf4 d3 3. Cf3 c2 4. Kc4 b2 5. Kb4 b1 6. Ce4 b2 7. Cc2 a1 8. Ce5x.} 1. Be4 Ke6 2. Nd5 Ke5 3. Bg6 Ke6 4. Bf4 Kd7 5. Bf7 Kd8 6. Kc6 Kc8 7. Nb6+ Kd8 8. Bg5#

(757) 1. Re3 c4 2. Nc6+ Kc5 3. Bg2 Kb5 4. Ra3 c3 5. Bd5 Kc5 6. Ra5#

(758) 1. O-O Kh4 2. Rf5 Kxh3 3. Rf4 Kg3 4. Kf1 Kh3 5. Kf2 Kh2 6. Rh4#

(759) 1. Qd4+ Kf5 2. Qf4+ Kg6 3. Nh7 f1=Q 4. Qg5#

(760) 1. Kf3 Kf5 2. Nd7 Kg5 3. Be3+ Kf5 (3... Kh5 4. Rh6#) 4. Rf6#

(761) 1. Be3 Kc7 2. Rb6 Kc8 (2... Kd8 3. Rc6 Ke8 4. Rc8#) 3. Kd6 Kd8 4. Rb8#

(762) 1. N8f6 Ka5 (1... Kc6 2. Bc4 Kb6 3. Nd5+ Ka5 (3... Kc6 4. Rc7#) 4. Ra7#) 2. Nd5 Ka4 3. Rh3 Ka5 4. Ra3#

(763) 1. Kb7 c3 (1... Kb4 2. a3+ Ka4 3. Qc3 b4 4. Qxb4#) (1... b4 2. Qa7+ Kb5 3. Qb6+ Ka4 4. Qa6#) 2. Qxc3 b4 3. Qc4 Ka3 (3... Ka5 4. Qa6#) 4. Qb3#

(764) 1. Kd2 Ke4 (1... f3 2. Ne3 Ke4 3. Qf5+ Kd4 4. Qd5#) 2. Qh5 Kd4 3. Nb6 Ke4 4. Qd5#

(765) 1. Ned3 Kb6 (1... Kb5 2. Qg4 Kb6 3. Qc8 Ka5 4. Qa6#) 2. Qb2+ Kc7 3. Qb7+ Kd6 4. Qd7#

(766) 1. Qa7 cxd2 (1... Kd1 2. Qa1+ Ke2 3. Qf1+ Ke3 4. Qf3#) 2. Qa2+ Kc3 3. Nd4 d1=Q 4. Nb5#

(767) 1. Kg6 Kxd4 (1... exd4 2. Nd2+ Ke5 3. Qe7+ Kf4 4. Qg5#) 2. Qc3+ Ke4 3. Nd2+ Kf4 4. Qf3#

(768) 1. Bb3 Ka6 (1... Kc5 2. Qe7+ Kb5 3. Qa3 c5 4. Qa4#) 2. Qxc6 Ka7 3. Bd5 Ka6 ( 3... Kb8 4. Qb7#) 4. Qa4#

(769) 1. Qg2 Ke3 (1... Kc3 2. Kc5 Kb3 3. Bb1 Ka3 (3... Kc3 4. Qc2#) 4. Qa2#) 2. Be4 c3 3. Qc2 Kd4 4. Qd3#

(770) 1. Ng2 Kd3 (1... Kf3 2. Bd5+ Kg3 3. Qf4+ Kh3 4. Qh4#) (1... a3 2. Qf1 Kd4 3. Qc4+ Ke5 4. Qf4#) (1... Kf5 2. Qf4+ Kg6 3. Bb1+ Kh5 4. Qh4#) 2. Qc4+ Kd2 3. Bb1 a3 4. Qc2#

(771) 1. Qg5 Kf3 (1... d4 2. Kc1 Kf3 3. Kd2 d3 4. Bc6#) (1... f3 2. Bd7 Kd4 3. Qe3+ Kc4 4. Qc3#) 2. Qg6 d4 3. Bf1 d3 4. Qg2#

(772) 1. Ng3 Kd6 (1... f5 2. Nxf5 Kf6 3. Qg7+ Ke6 4. Qe7#) (1... Ke5 2. Qc7+ Ke6 3. Bf5+ Kd5 4. Qc5#) 2. Bf5 Ke5 3. Qc7+ Kd4 4. Qc5#

(773) 1. Bd7 Ke5 (1... Kd4 2. Ne2+ Kc5 3. Qc7+ Kb4 4. Qc3#) (1... d4 2. Qe1+ Kf3 3. Bc6+ Kxf4 4. Qg3#) 2. Ne6+ Ke4 3. Bb5 d4 (3... f4 4. Qxf4#) 4. Bc6#

(774) 1. e6 Kg5 (1... Ke4 2. Qf6 Kd3 3. Qc3+ Ke2 4. Bg4#) 2. Qg7+ Kf4 3. Qg3+ Ke4 4. Qe3#

(775) 1. Bb4 Kc2 (1... Kd4 2. Kf2 Kd3 (2... c3 3. Ba6 c2 4. Qe3#) 3. Qe2+ Kd4 4. Qe3#) (1... c3 2. Bxd5 Kc2 3. Bxc3 Kd3 4. Qd2#) 2. Qc3+ Kb1 3. Ba3 d4 4. Qb2#

(776) {2 daoaiety} 1. Qf1 (1. Kc7 Ke6 (1... Kc4 2. Kxd6 Kc3 3. Rd3+ Kc4 4. Qb3#) 2. Rf2 Kd5 3. Qd3 Ke6 4. Qe4#) 1... Ke6 (1... Ke4 2. Rd3 Kd5 3. Qf7+ Ke4 4. Qf3#) 2. Kc6 Ke7 3. Re2+ Kd8 4. Qf8#

(777) 1. Ba5 Ka7 2. Ne5 Ka6 3. Nec4 Ka7 4. Nb5+ Ka6 5. Nc7+ Ka7 6. Bb6#

(778) 1. Ba1 Kxa1 2. h7 Ka2 3. h8=R Ka1 4. Kb3 Kb1 5. Rh1#

(779) 1. Qf2 Kd3 (1... Ke5 2. Kc5 Ke4 3. Kc4 Ke5 4. Qf4#) (1... Kd5 2. Kb5 Kd6 3. Qf7 Ke5 4. Qe6#) 2. e4 Kxe4 3. Kc4 Ke5 4. Qd4#

(780) {b} d5-g3} 1. Bc2 c6 (1... Kc5 2. Bb3 c6 3. Qe3+ Kb5 4. Qb6#) 2. Nb6+ Kb4 3. Na4 c5 4. Qxc5#

(781) 1. Nf2 Kc4 (1... Kd4 2. Qe7 Kc3 3. Qb4+ Kc2 4. Kxa3 Kc1 5. Qb2#) 2. Qb6 Kc3 3. Qb4+ Kc2 4. Kxa3 d4 5. Qb2#

(782) 1. Be8 e5+ (1... Kf6 2. Qg6+ Ke7 3. Qf7+ Kd6 4. Qd7#) 2. Kd5 e4 3. Bh5 Kf6 4. Qe5#

(783) 1. Kxh2 Kd4 (1... d5 2. Qc3+ Kb5 3. Qc5+ Ka4 (3... Ka6 4. Qb6#) 4. Qb4#) (1... Kb5 2. Qb3+ Kc6 3. Nd8+ Kd7 4. Qe6#) 2. Bc3+ Kc4 3. Na5+ Kc5 4. Qc6#

(784) 1. Bc4 Bf5 2. Ba6 Bc8 3. Bxc8 Kd5 4. Bb7#

(785) 1. Qe4 Kc3 (1... Kc2 2. Qb4 Kd1 (2... d2 3. Qb3+ Kc1 4. Qb1#) 3. Qe1+ Kc2 4. Ne3#) 2. Nf4 Kc2 (2... Kd2 3. Qxd3+ Ke1 4. Qe2#) 3. Qxd3+ Kc1 4. Ne2#

(786) 1. Kb3 d4 2. Nf6 Kb5 (2... d3 3. Nd7+ Kd4 4. Qe5#) 3. Nd7 d3 4. Qb6#

(787) 1. Qe3 g5 (1... Kh4 2. Nf6 g5 3. Qd3 g3 4. Qh7#) 2. Qd3 g3 3. Nf6+ Kh6 4. Qh7#

(788) 1. Nc3 Kxc3 (1... Kc5 2. Nbd5 Kd6 3. Qd4 Kc6 (3... Ke6 4. Qf6#) 4. Qb6#) (1... d5 2. Nbx5+ Kc5 3. Qf4 Kc6 4. Qc7#) 2. Nc2 d6 3. Qb4+ Kd3 4. Qd4#

(789) 1. Qc1 Kxd4 (1... Kxd3 2. Ke5 c5 3. Qc2+ Ke3 4. Qe2#) (1... c5 2. Nf2+ Kxd4 3. Kd6 c4 4. Qd2#) 2. Nf2 c5 3. Kd6 c4 4. Qd2#

(790) 1. Ke4 Kc4 (1... Kb6 2. Kd5 Kc7 3. Ba5+ Kd7 4. Qd8#) (1... Kc5 2. Qb7 Kd6 3. Bb4+ Ke6 4. Qe7#) 2. Qa3 Kb5 3. Qd6 Kc4 4. Qb4#

(791) 1. Kh4 d5 (1... Kf5 2. Qc4 Kg6 3. Qg8+ Kf5 4. Qg4#) 2. Qg3+ Ke4 3. Kg4 d4 4. Qf3#

(792) 1. Qb8 Kc5 (1... Ke3 2. Qf8 Kd4 (2... d4 3. Ke1 d3 4. Qf2#) 3. Qe7 Kc3 4. Qb4#) 2. Kd2 Kd4 (2... d4 3. Be4 Kc4 4. Qb4#) 3. Qd6 Kc4 4. Qb4#

(793) 1. Kg2 Kc4 (1... Ke4 2. Qa5 Kf4 3. Qh5 Ke4 4. Qf3#) 2. Nc5 Kd5 (2... Kb5 3. Qa6+ Kb4 4. Qa4#) 3. Qa4 Kd6 4. Qd7#

(794) 1. Nc5 f6 (1... f5 2. Nd3 f4 3. Qe6 Kh4 4. Qg4#) 2. Qg3+ Kh6 3. Ne6 f5 4. Qg7#

(795) 1. Nb7 f5 (1... Ke5 2. Bf5 Kd4 3. Qd3+ Ke5 4. Qe4#) (1... Kc4 2. Qd3+ Kb4 3. Bd5 f5 4. Qb3#) 2. Bc2 f6 3. Qd3+ Ke5 4. Qd6#

(796) 1. Bg7 d5 (1... e5 2. Bd5 e4 3. Bh6 e3 4. Qg5#) 2. Kc5 e5 (2... d4 3. Bf3 e5 4. Qg4#) (2... Ke4 3. Ba6 Kf5 4. Bd3#) 3. Kxd5 e4 4. Bc8#

(797) 1. h4 f2 (1... g5 2. hxg5 Kxa3 3. Rh2 f2 4. Rxf2 Ka4 5. Ra2#) (1... Kxa3 2. Rh2 f2 3. Rxf2 g5 4. hxg5 Ka4 5. Ra2#) (1... Ka2 2. Kc3 f2 3. Rf1 g5 4. hxg5 Kxa3 5. Ra1#) 2. Rf1 Kxa3 3. Rxf2 g5 4. hxg5 Ka4 5. Ra2#

(798) 1. Qb7 Ka5 (1... b3 2. Qxd5+ Ka4 3. Qc4+ Ka5 4. a4 b5 5. Qxb5#) 2. Qa7+ Kb5 3. Qa8 b3 4. axb3 Kb4 5. Qa4#

(799) 1. Ba6 Ke3 (1... Kf4 2. Qf6+ Ke3 3. Qd6 Kf2 4. Qg3#) 2. Kg2 Kf4 3. Qf6+ Ke3 4. Qf2#

(800) 1. Kg2 d4 (1... Ke2 2. Rd4 Kxe1 3. Kf3 Kf1 4. Rd1#) 2. Ra5 d3 3. Ra4 d2 4. Re4#