

Rozsáhlá sbírka šachových problémů (mnohotažek)

Strmilovská zastavení bohyně Caissy

45. díl

diagramy 8801-9000

Generační dialog

Šediny dědečka, šediny řídké
rámují vrásčitou zmačkanou tvář
jakoby navíc byl, jakoby přebýval
jak starý odraný prošlý kalendář

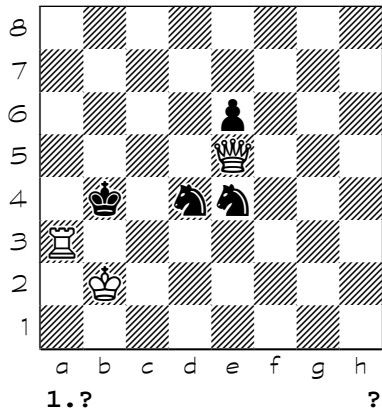
Dědoušku je to tak, už je čas končit!
Už jsi se důchodem přesytil moc!
Děláme na tebe, nemá to konec,
Den tvůj dost dlouhý byl, přivolej noc!

Hyacint

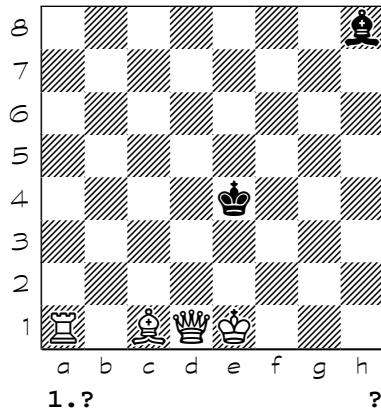
<http://www.strmilov.cz/>

Chess diagrams

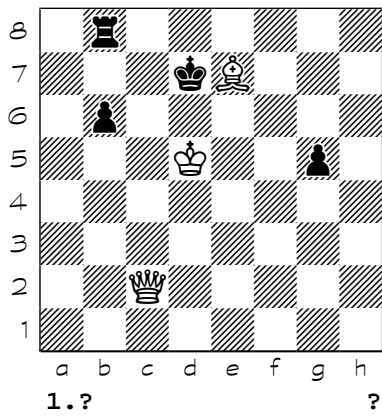
8801



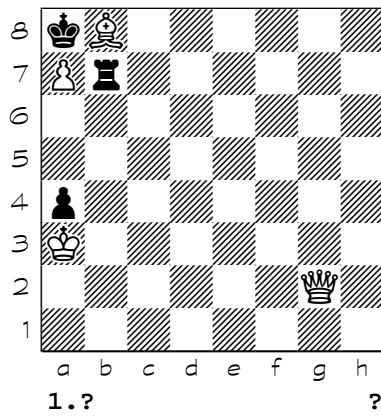
8802



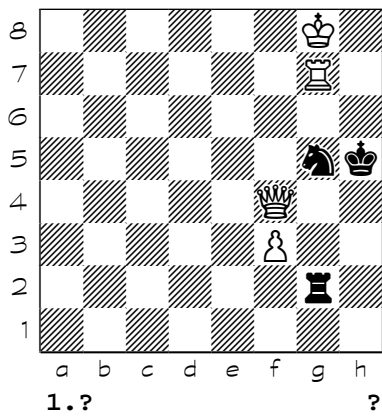
8803



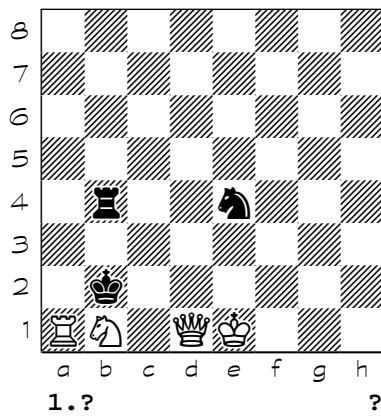
8804



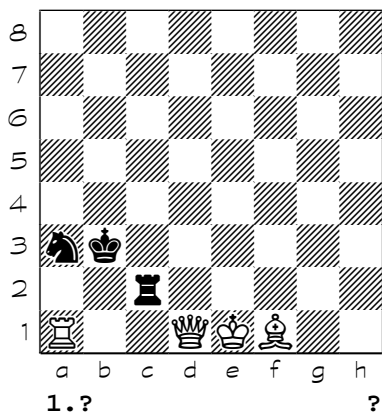
8805



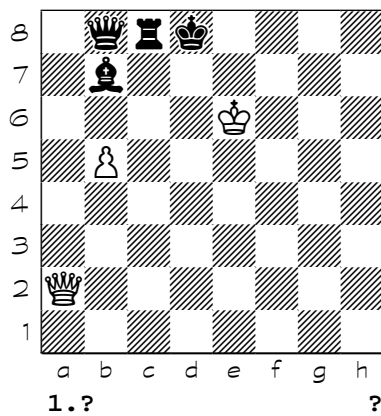
8806



8807

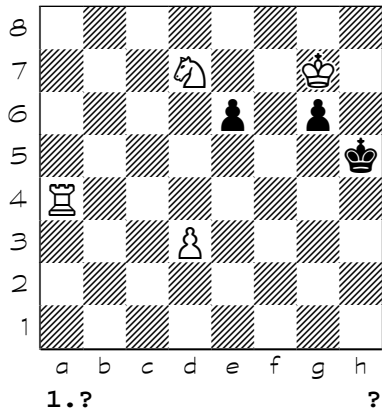


8808

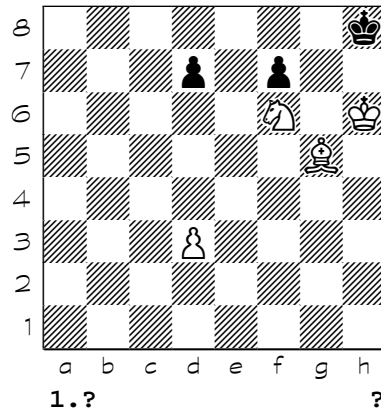


Chess diagrams

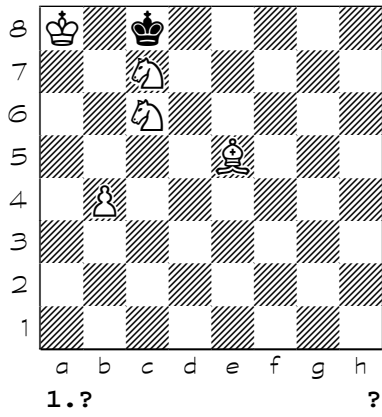
8809



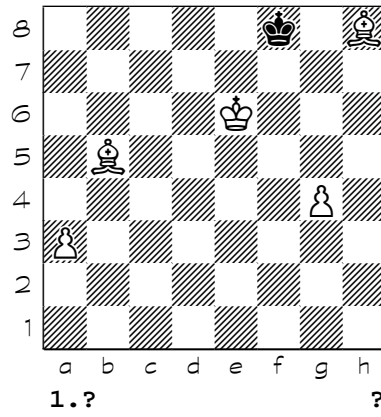
8810



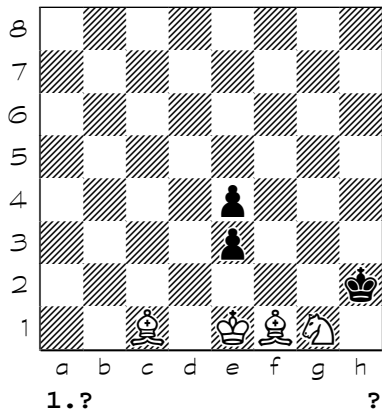
8811



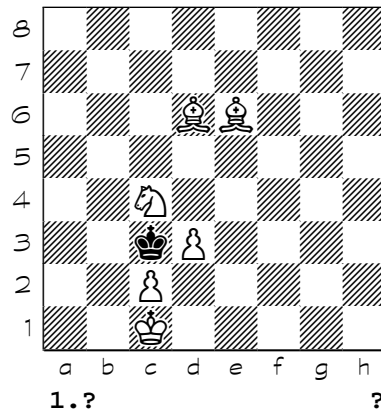
8812



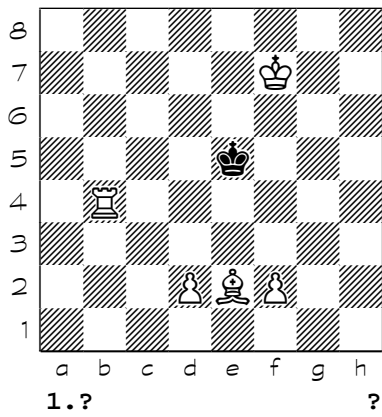
8813



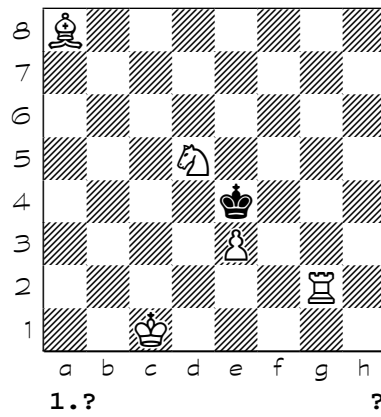
8814



8815

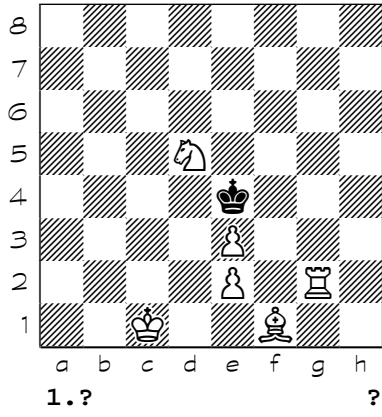


8816

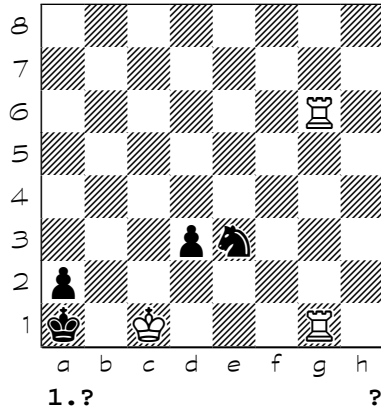


Chess diagrams

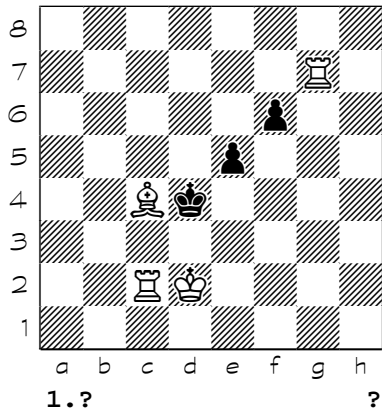
8817



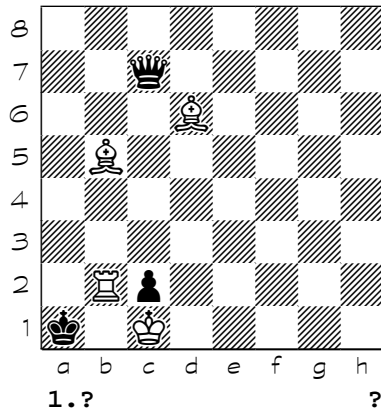
8818



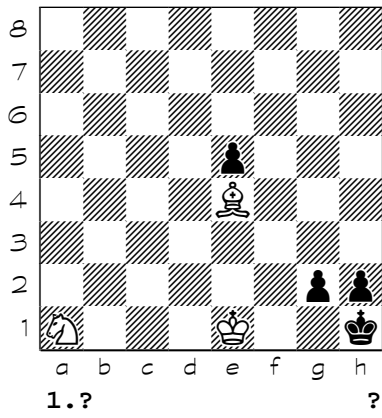
8819



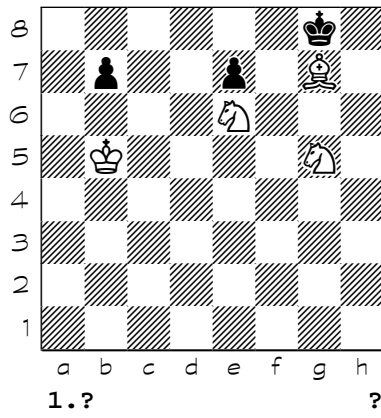
8820



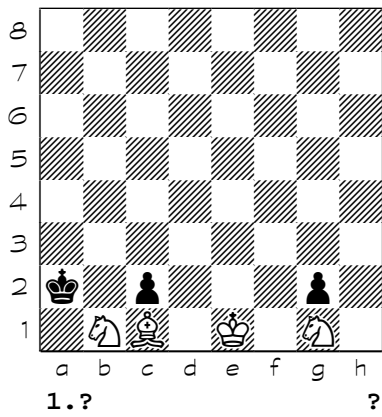
8821



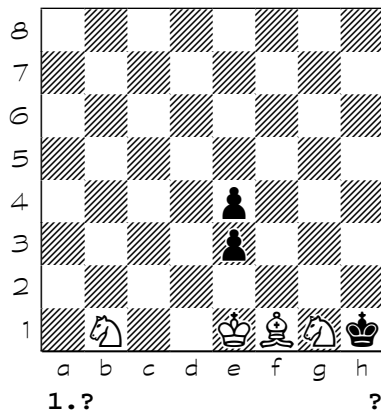
8822



8823

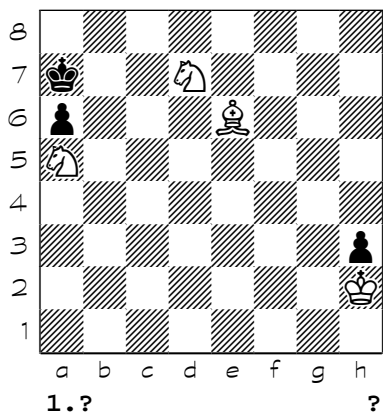


8824

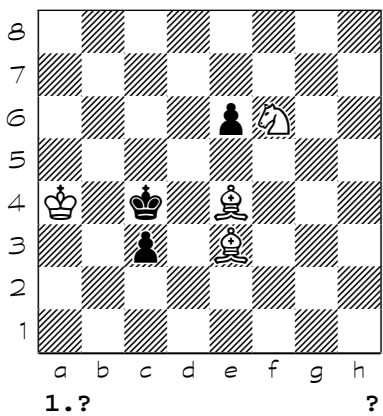


Chess diagrams

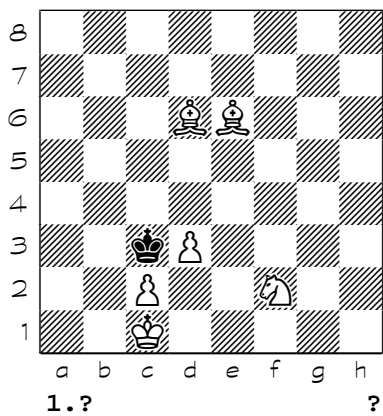
8825



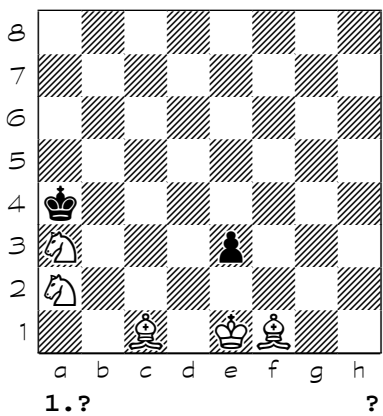
8826



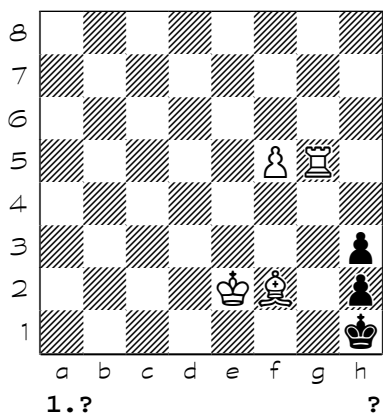
8827



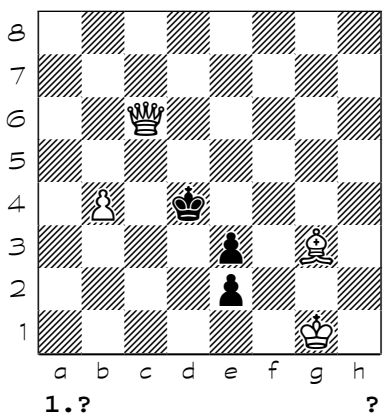
8828



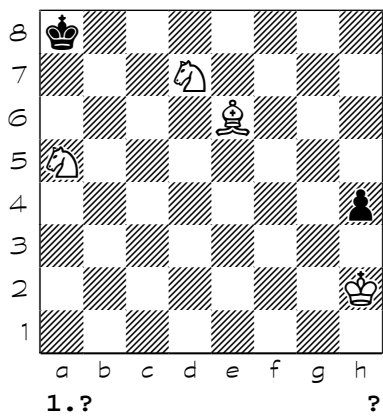
8829



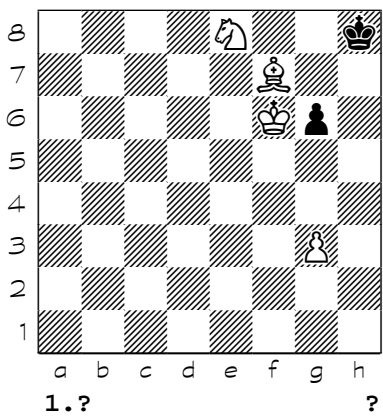
8830



8831

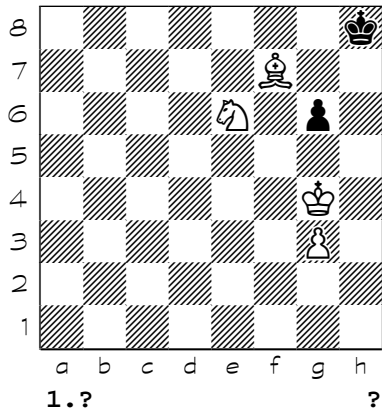


8832

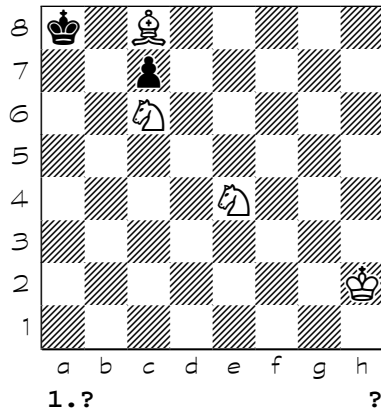


Chess diagrams

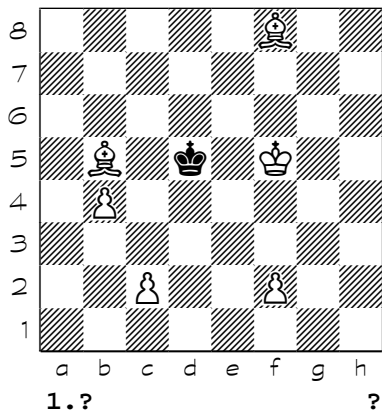
8833



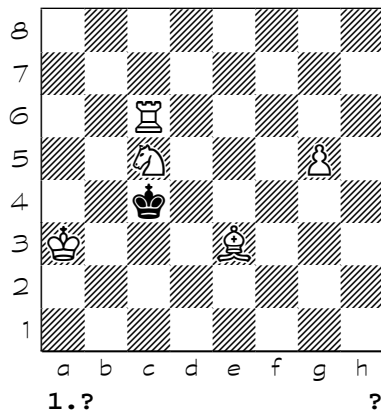
8834



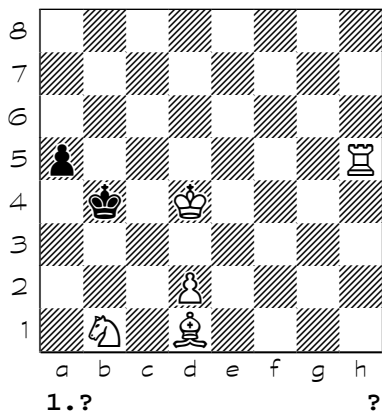
8835



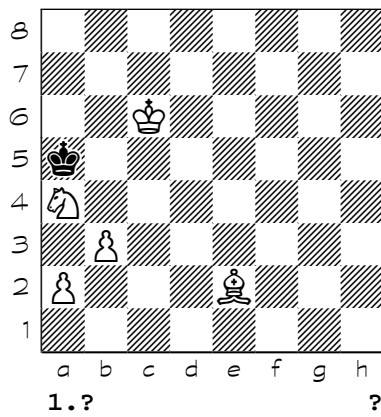
8836



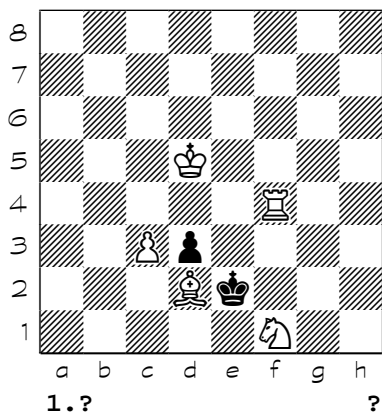
8837



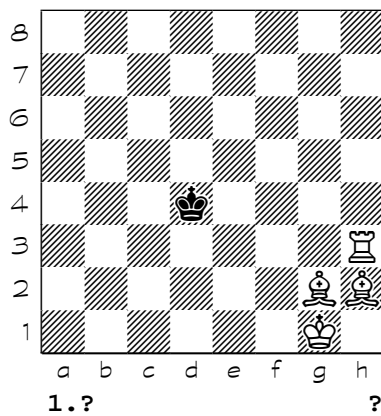
8838



8839

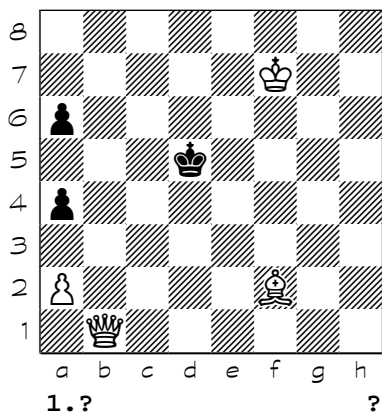


8840

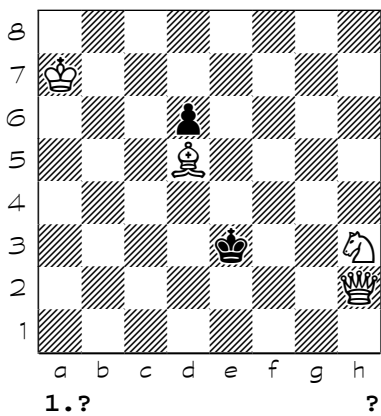


Chess diagrams

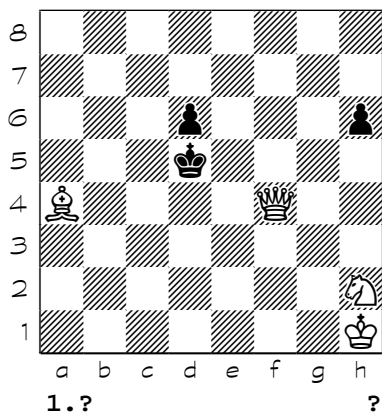
8841



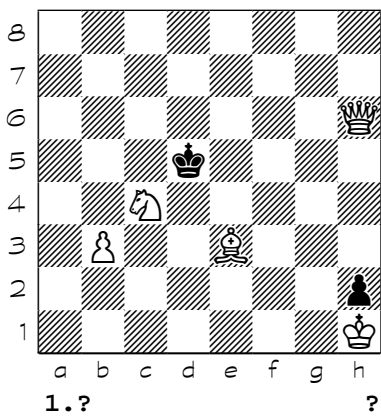
8842



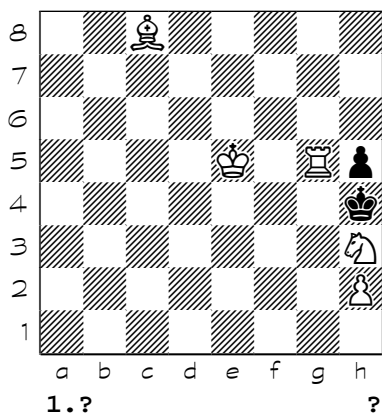
8843



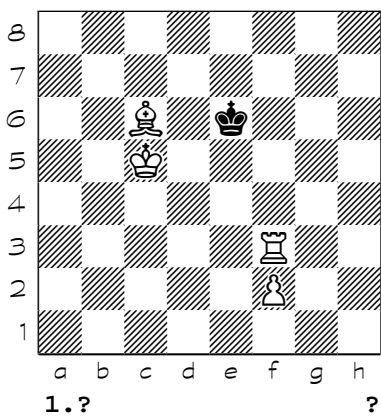
8844



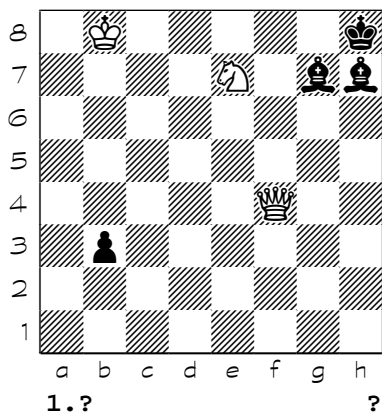
8845



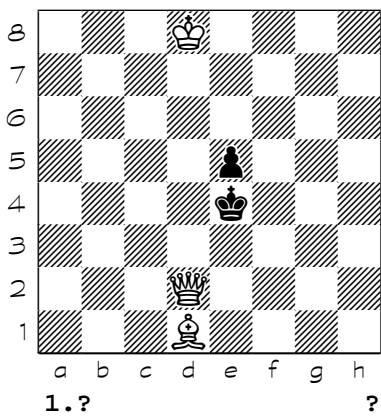
8846



8847

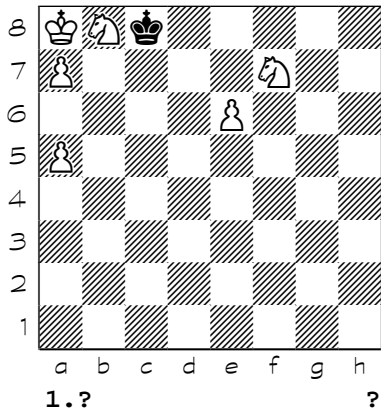


8848

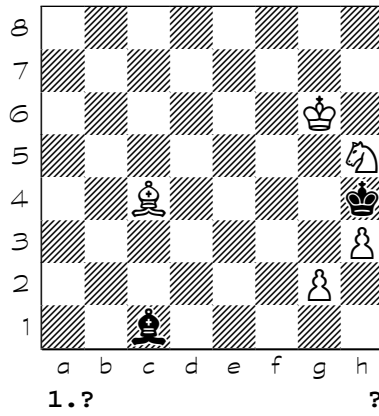


Chess diagrams

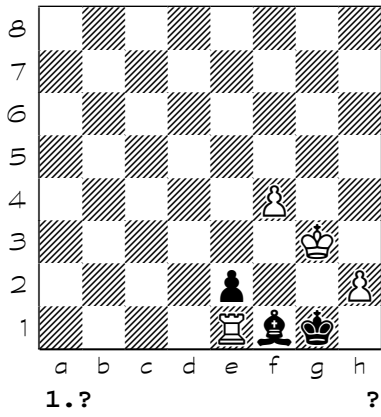
8849



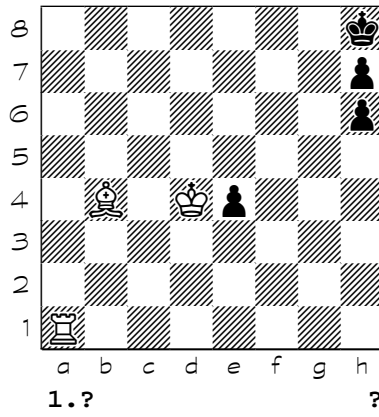
8850



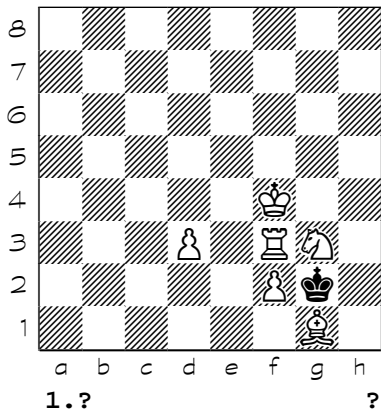
8851



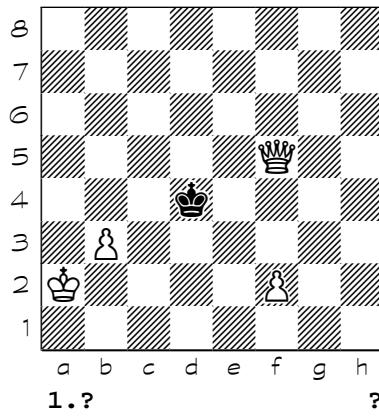
8852



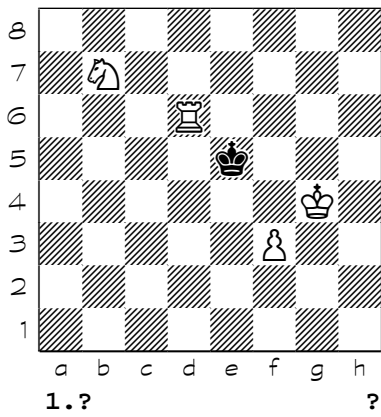
8853



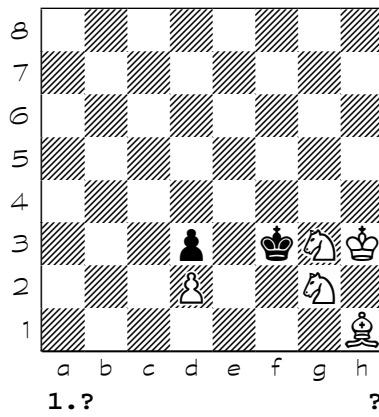
8854



8855

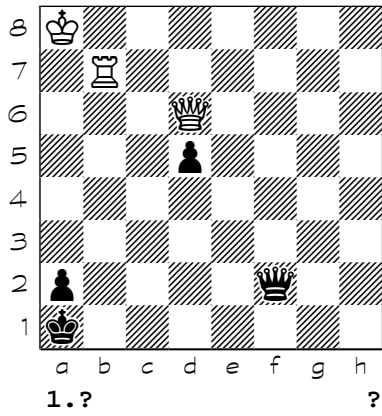


8856

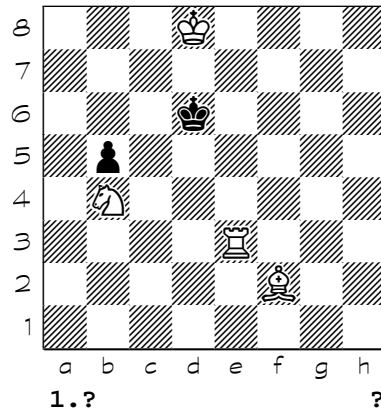


Chess diagrams

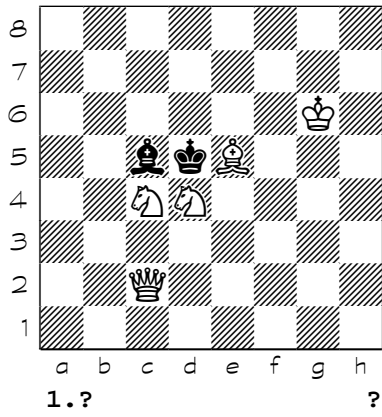
8857



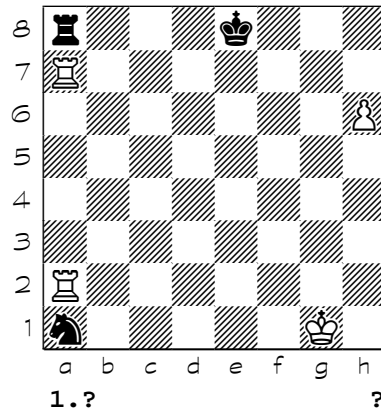
8858



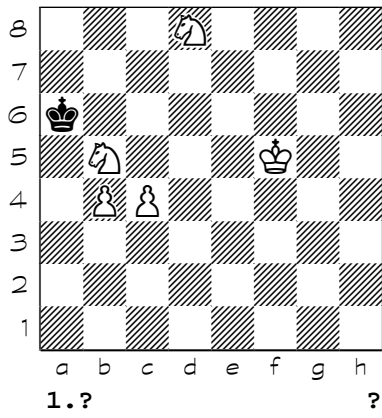
8859



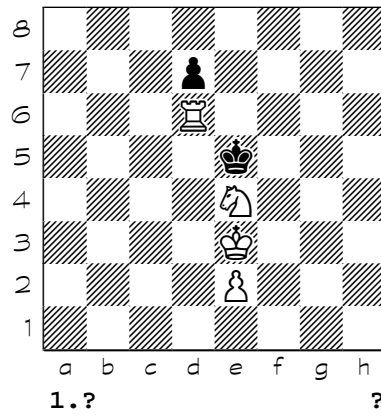
8860



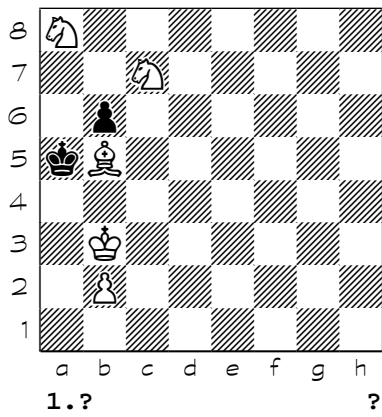
8861



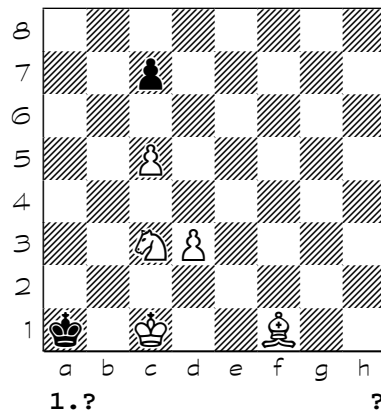
8862



8863

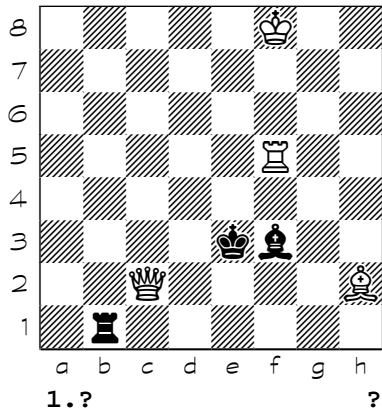


8864

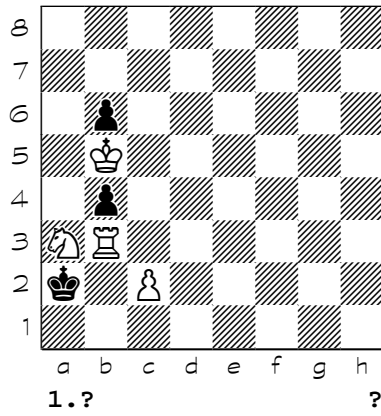


Chess diagrams

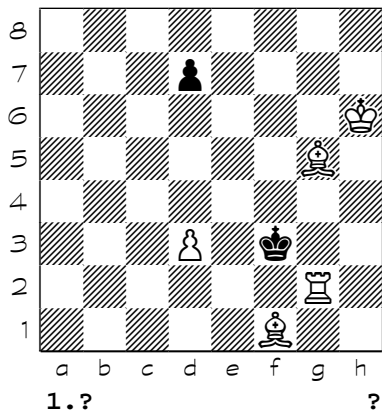
8865



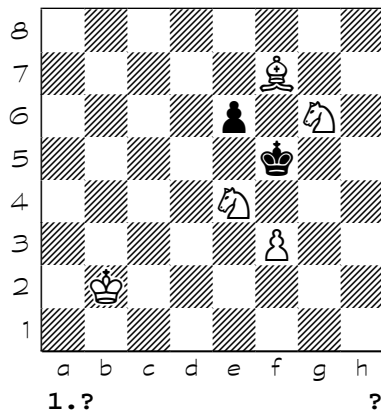
8866



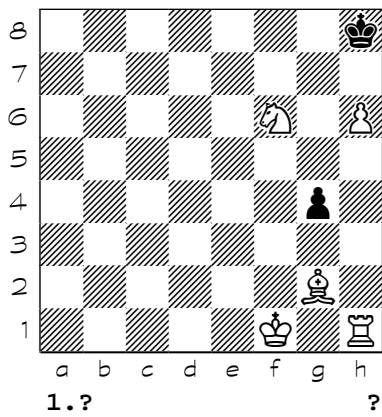
8867



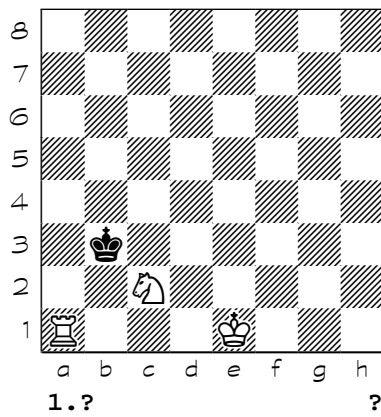
8868



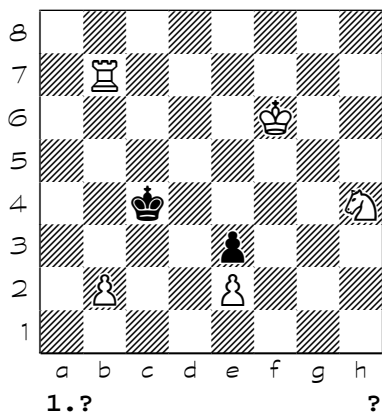
8869



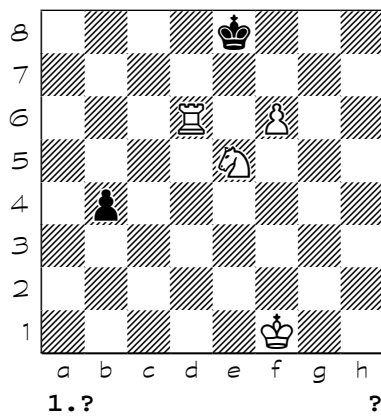
8870



8871

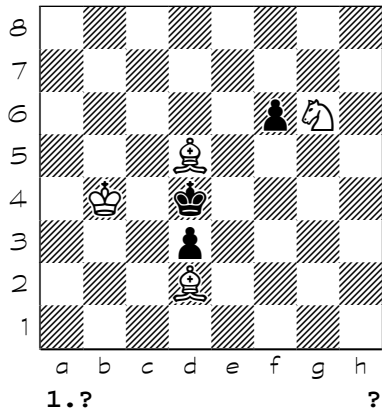


8872

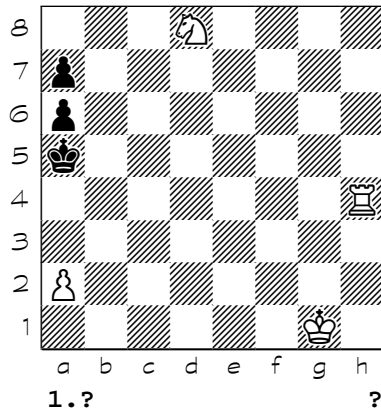


Chess diagrams

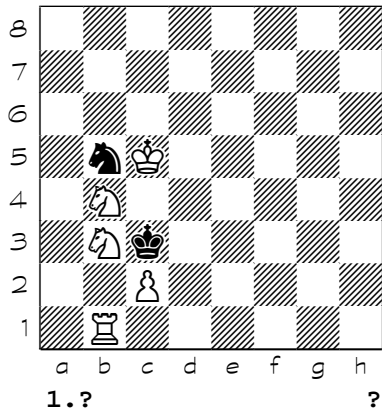
8873



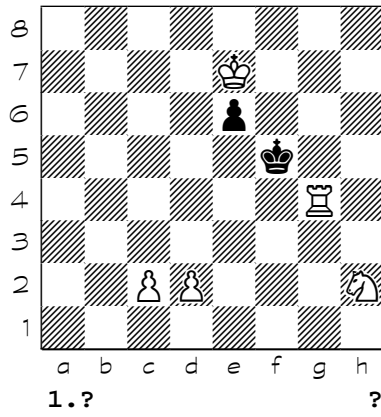
8874



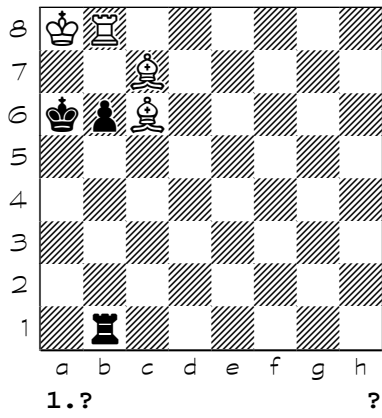
8875



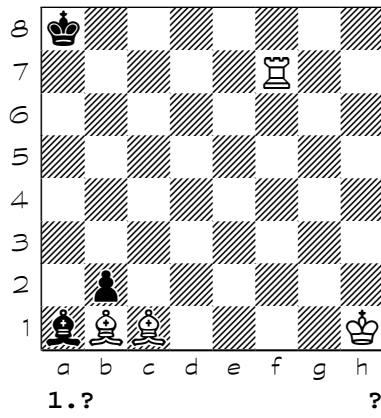
8876



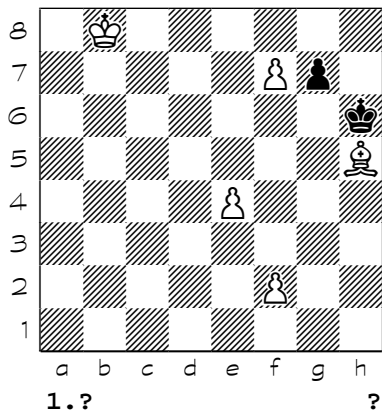
8877



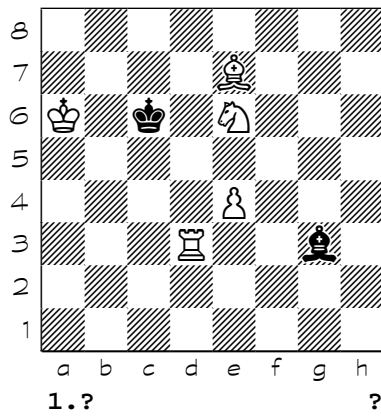
8878



8879

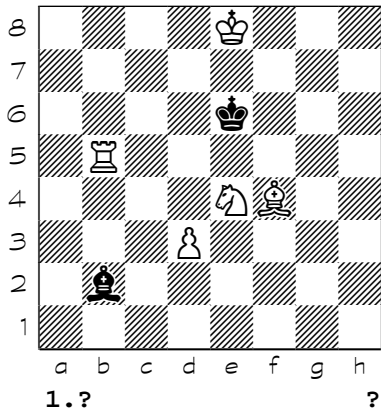


8880

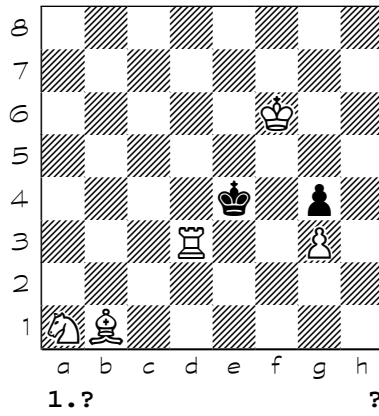


Chess diagrams

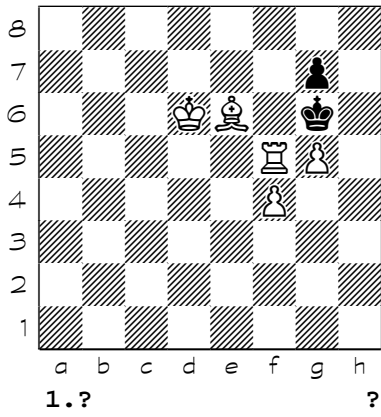
8881



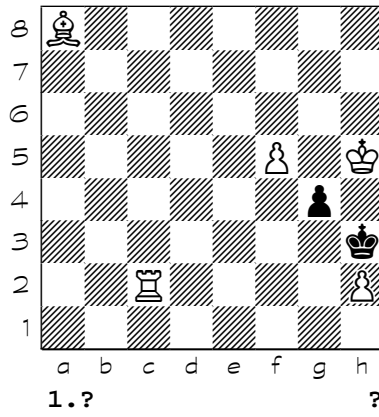
8882



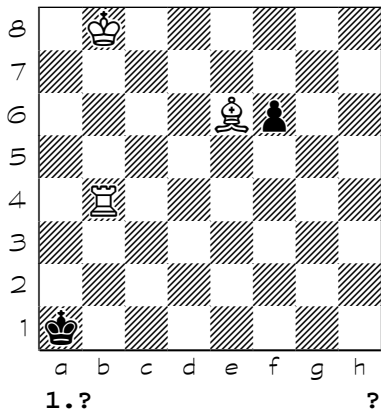
8883



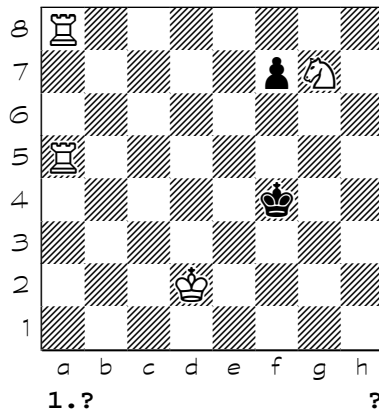
8884



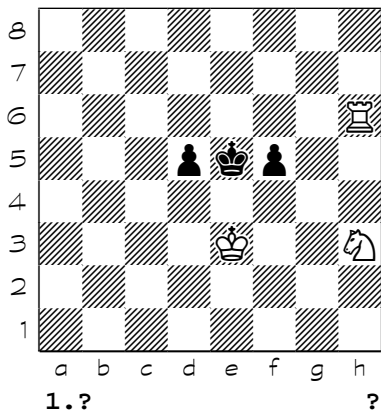
8885



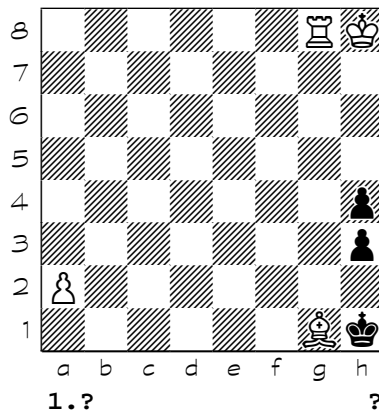
8886



8887

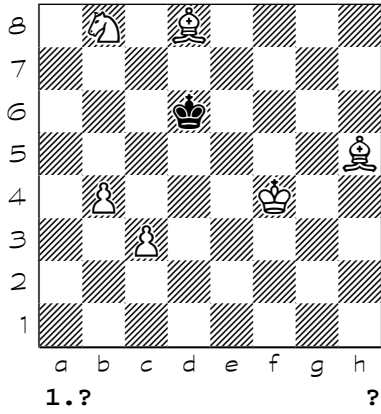


8888

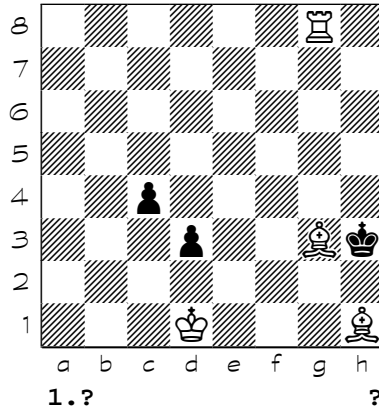


Chess diagrams

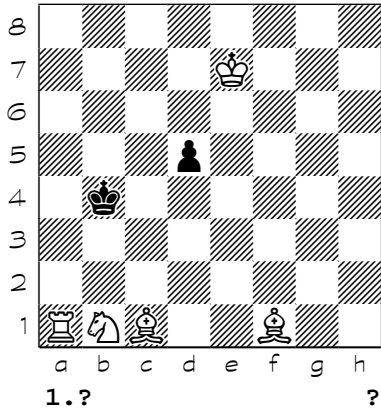
8889



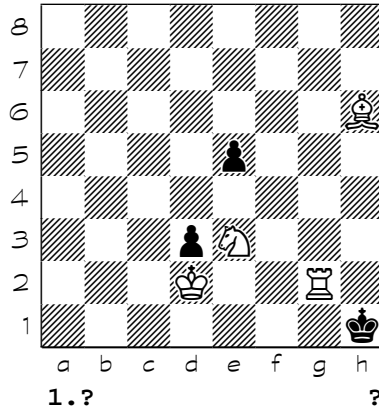
8890



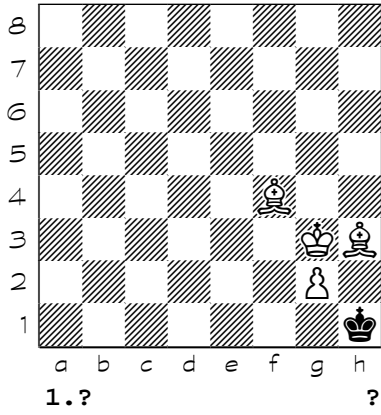
8891



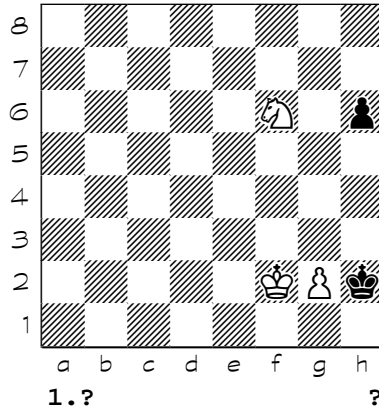
8892



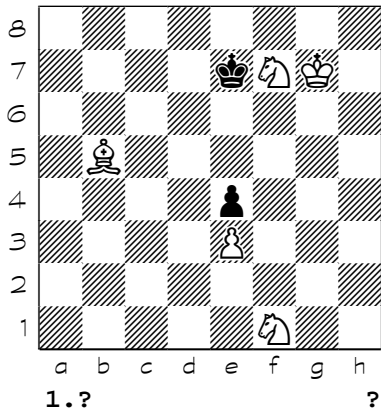
8893



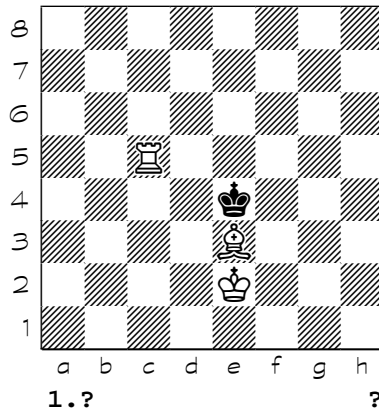
8894



8895

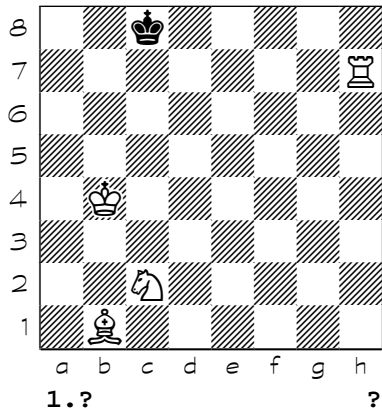


8896

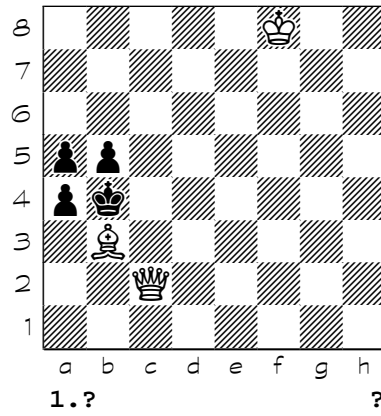


Chess diagrams

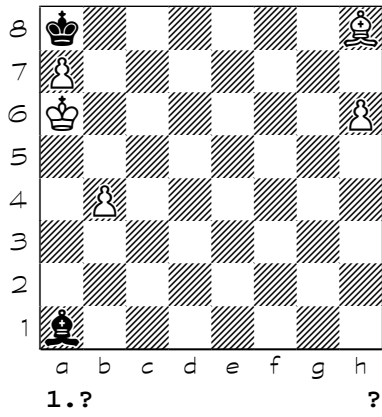
8897



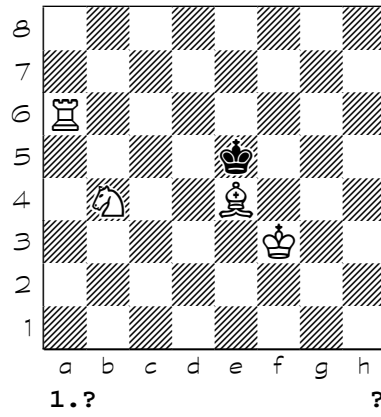
8898



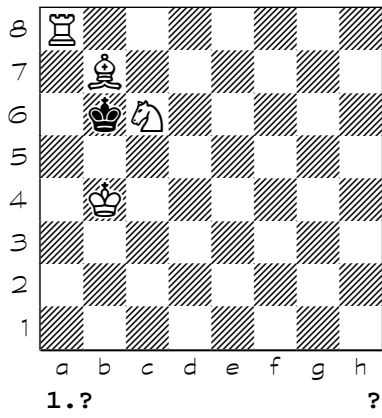
8899



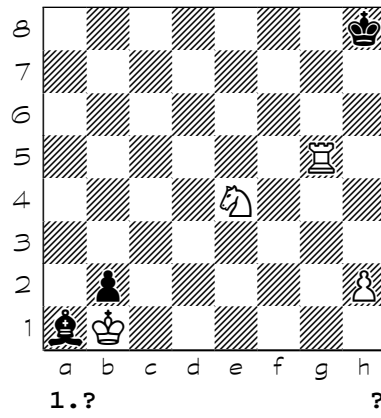
8900



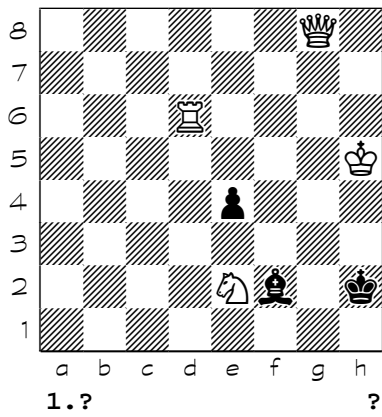
8901



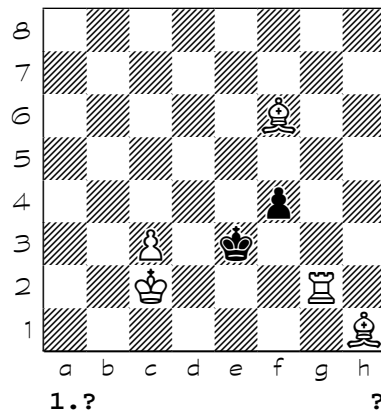
8902



8903

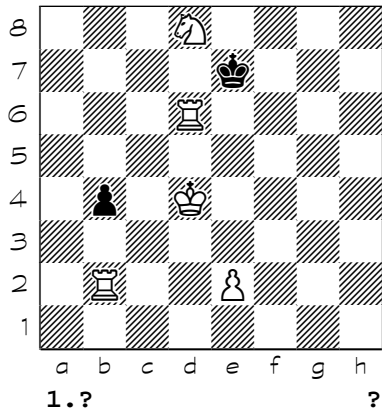


8904

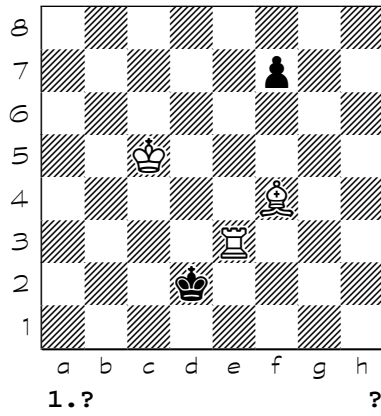


Chess diagrams

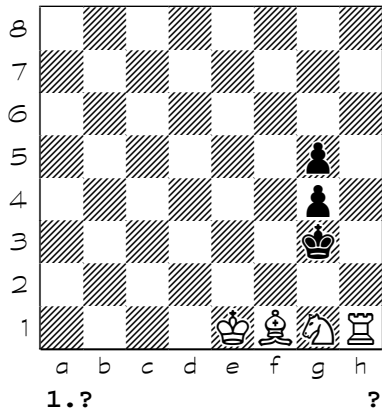
8905



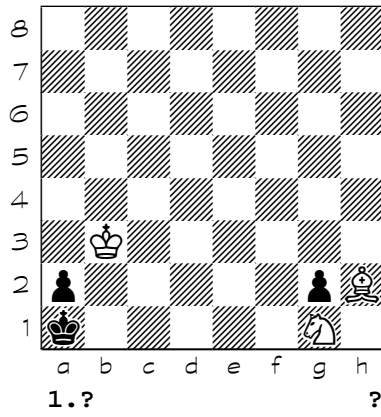
8906



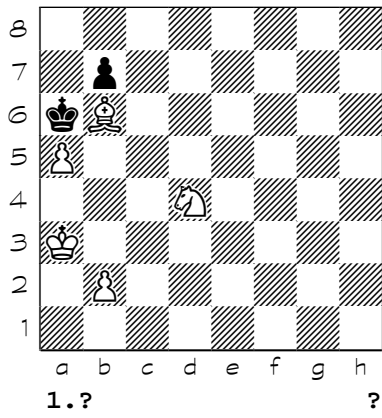
8907



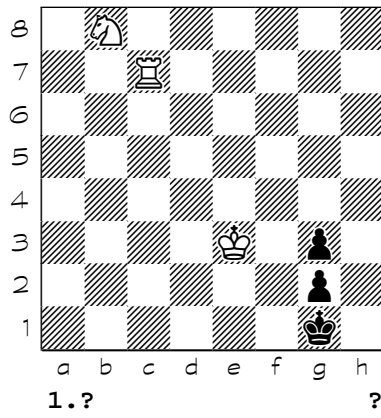
8908



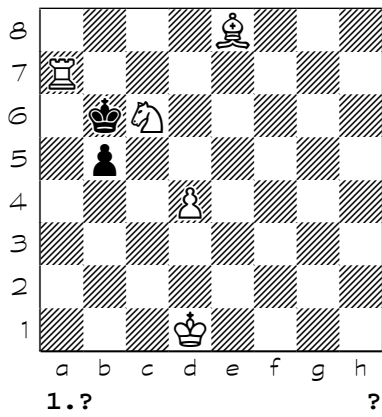
8909



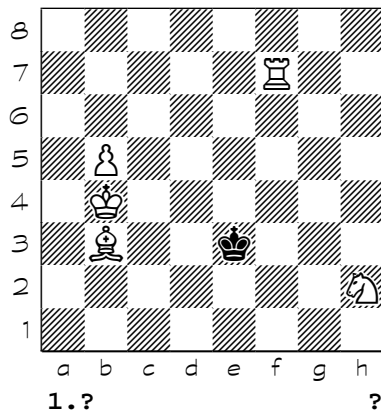
8910



8911

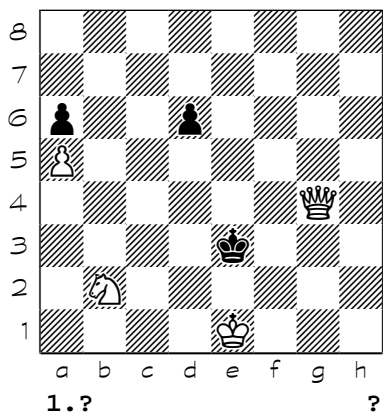


8912

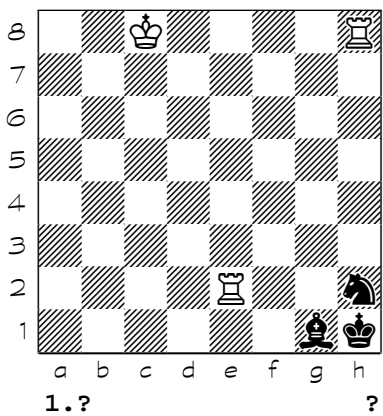


Chess diagrams

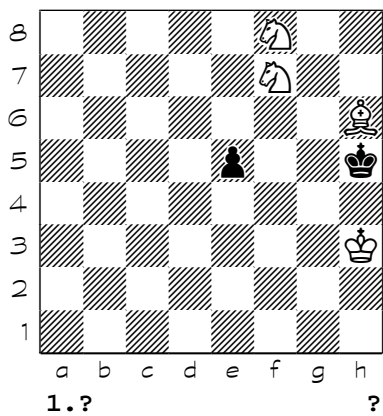
8913



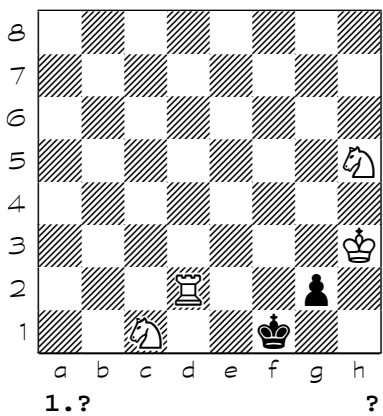
8914



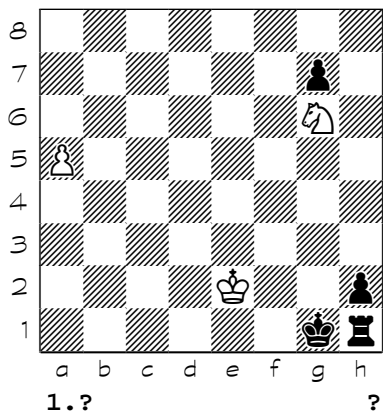
8915



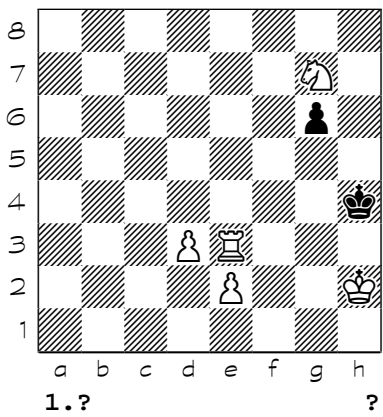
8916



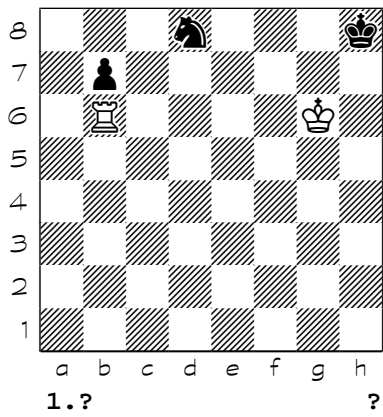
8917



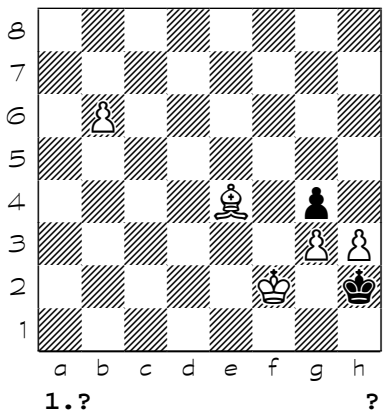
8918



8919

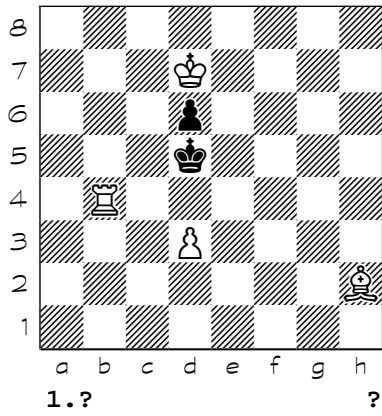


8920

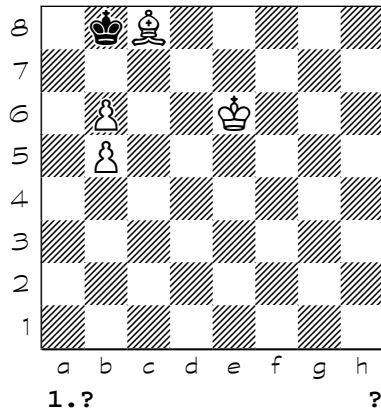


Chess diagrams

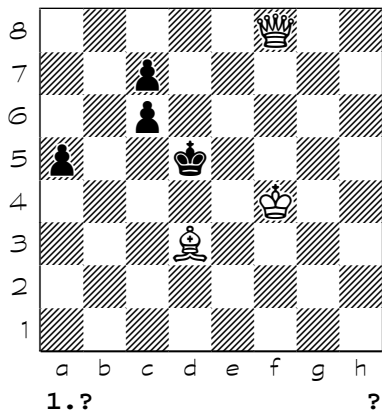
8921



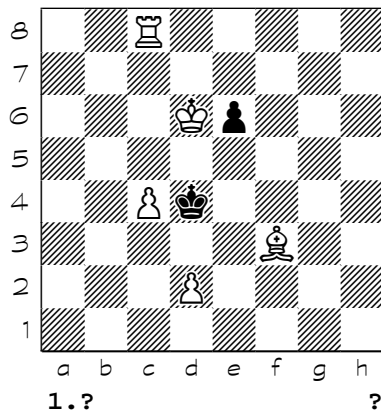
8922



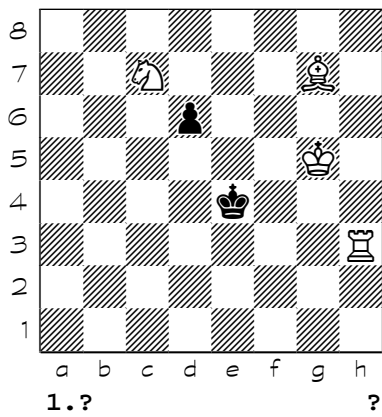
8923



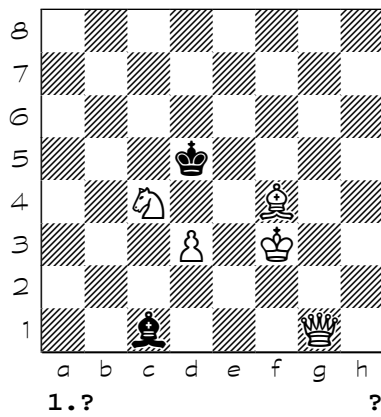
8924



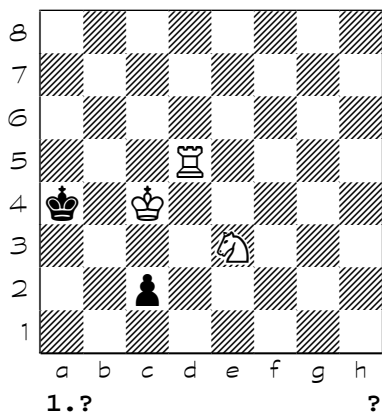
8925



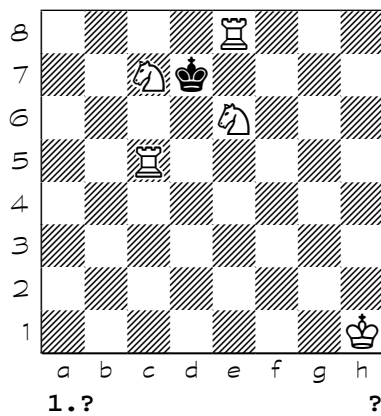
8926



8927

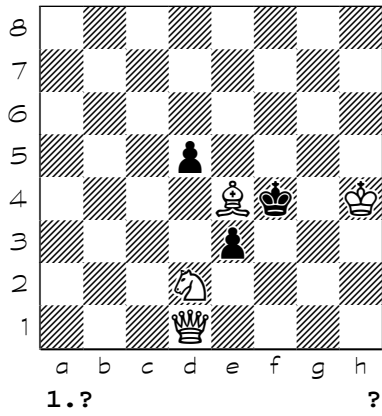


8928

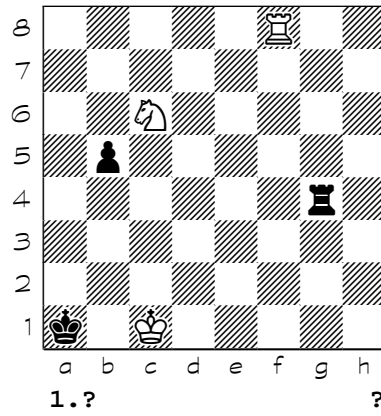


Chess diagrams

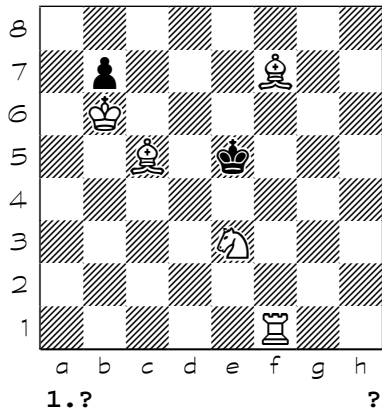
8929



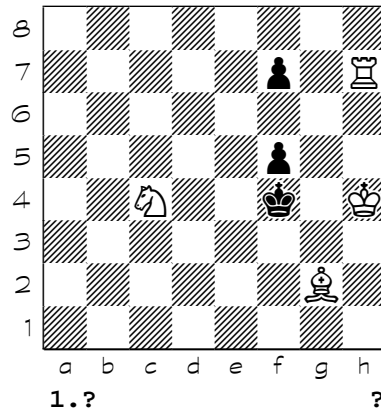
8930



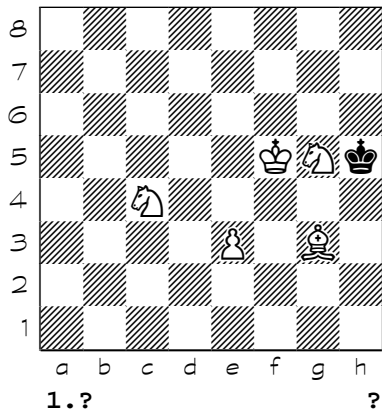
8931



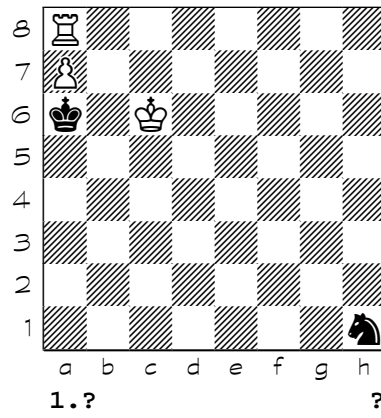
8932



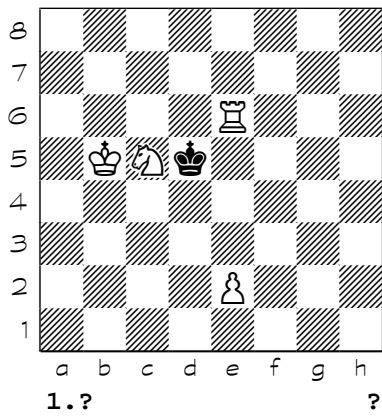
8933



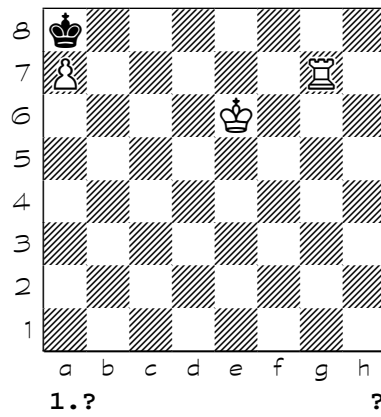
8934



8935

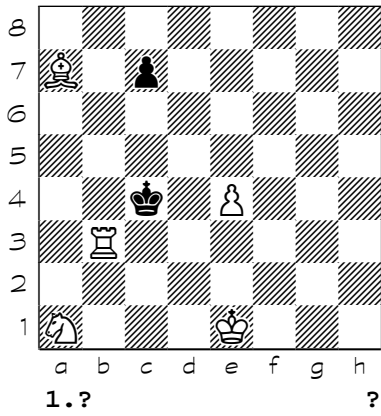


8936

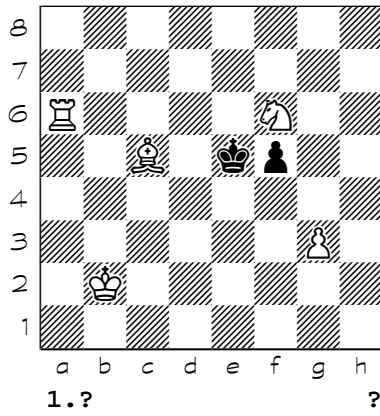


Chess diagrams

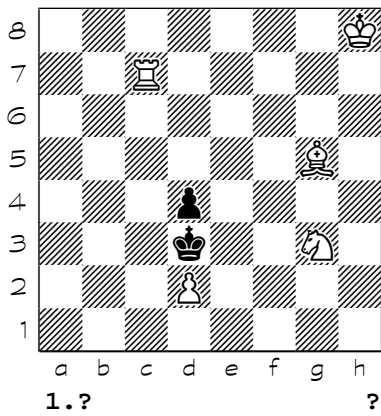
8937



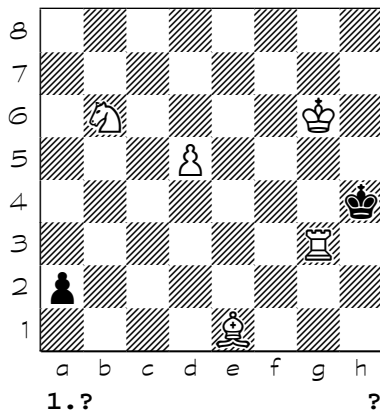
8938



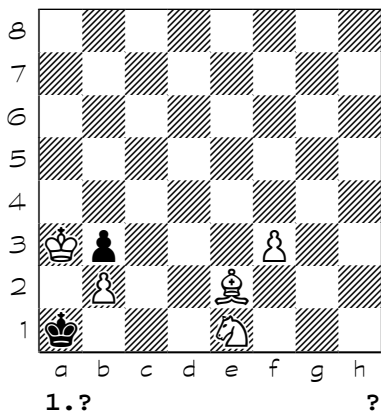
8939



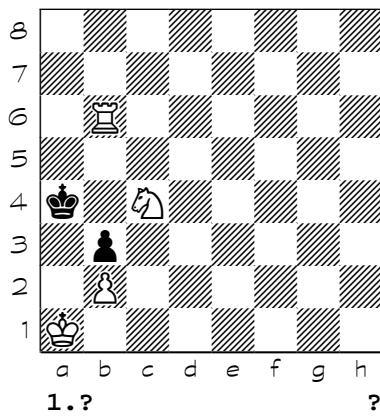
8940



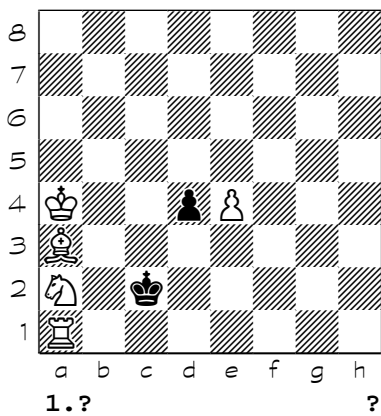
8941



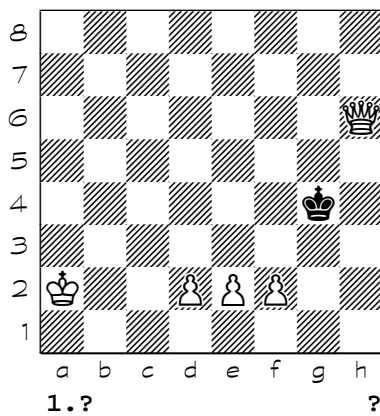
8942



8943

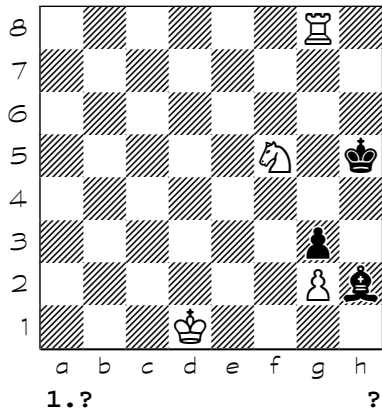


8944

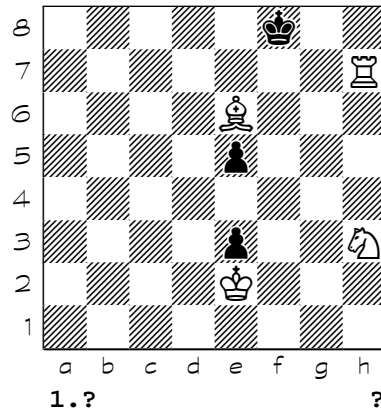


Chess diagrams

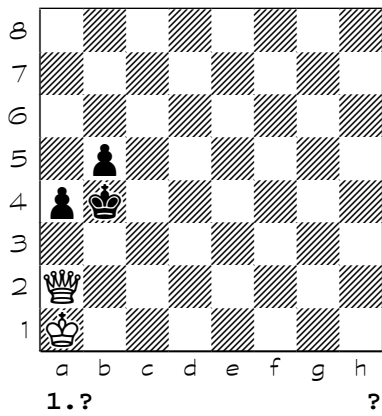
8945



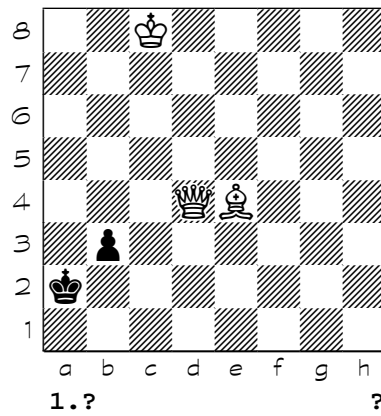
8946



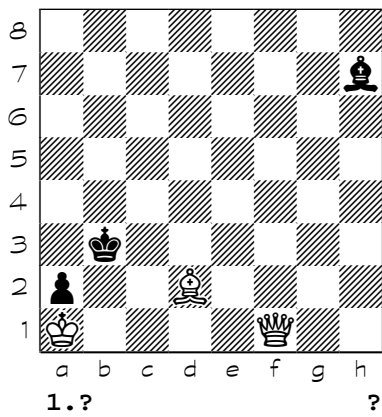
8947



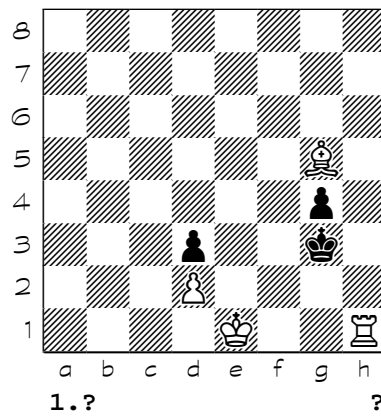
8948



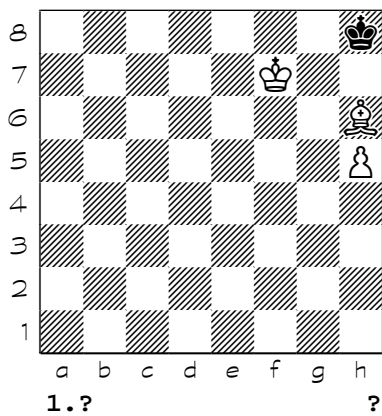
8949



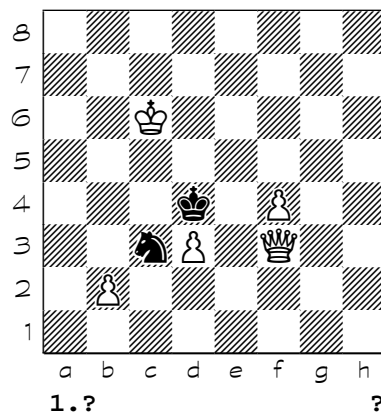
8950



8951

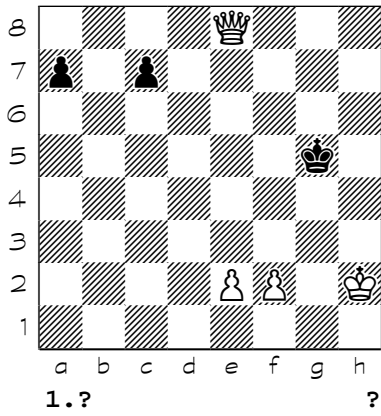


8952

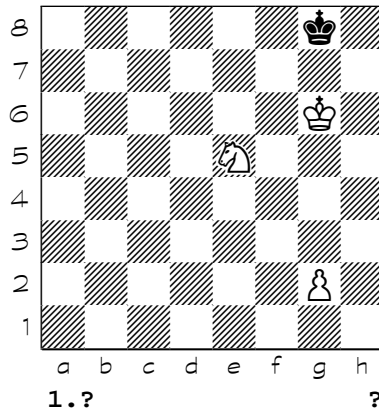


Chess diagrams

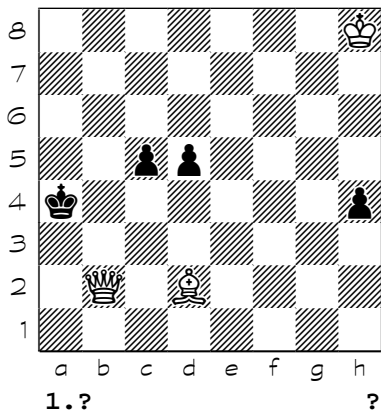
8953



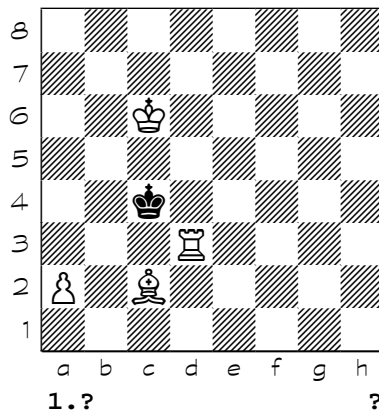
8954



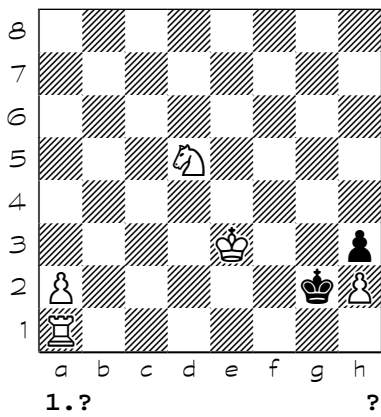
8955



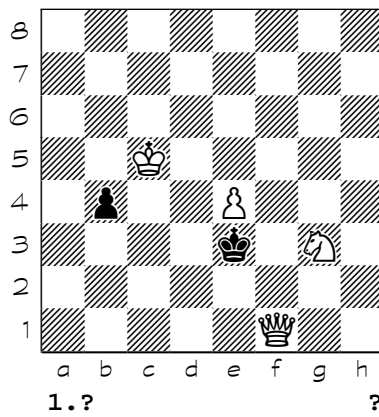
8956



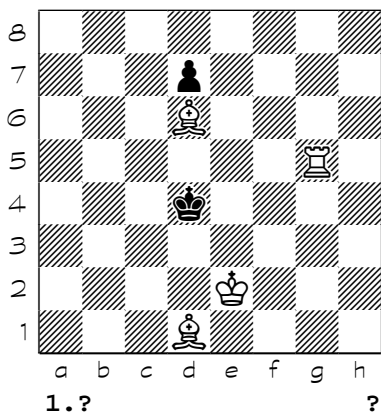
8957



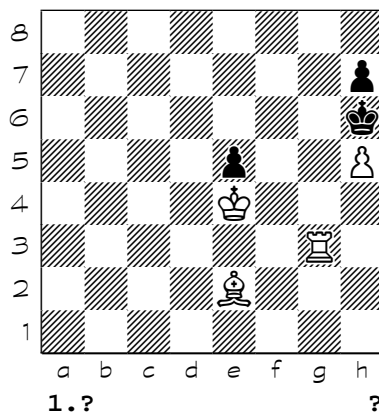
8958



8959

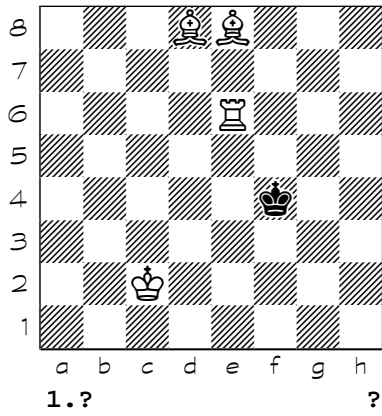


8960

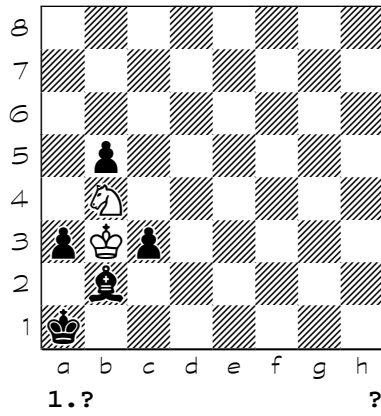


Chess diagrams

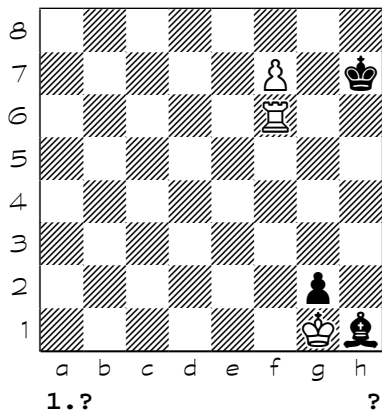
8961



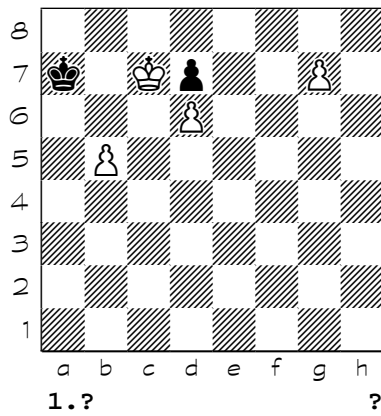
8962



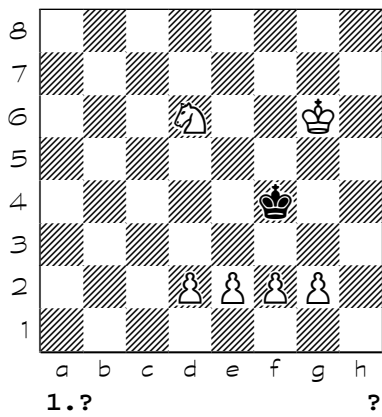
8963



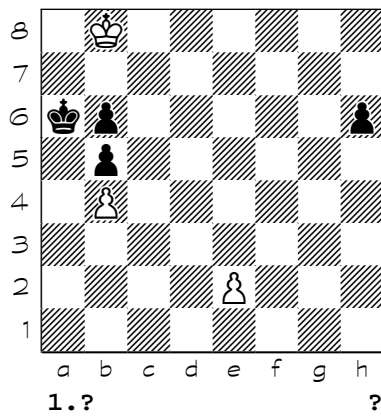
8964



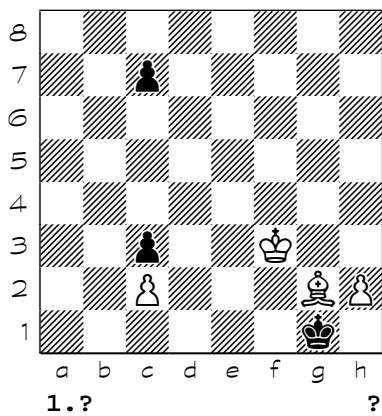
8965



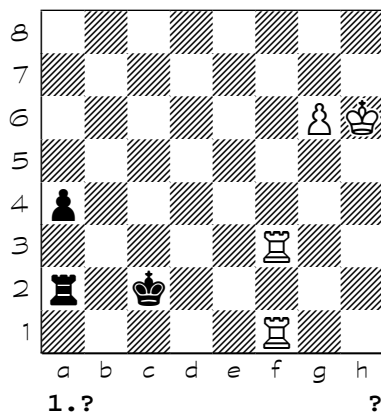
8966



8967

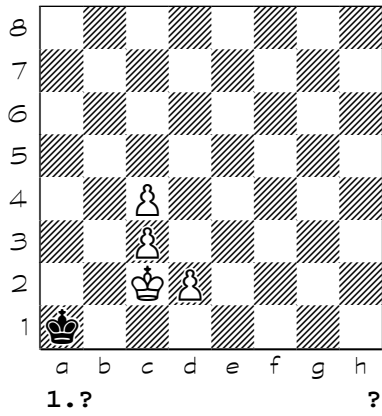


8968

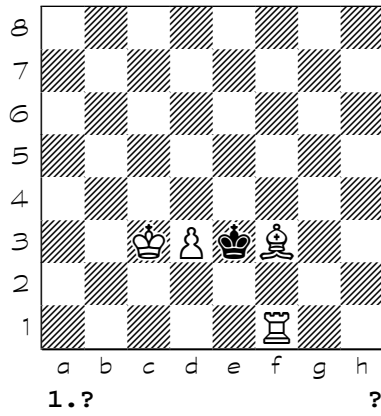


Chess diagrams

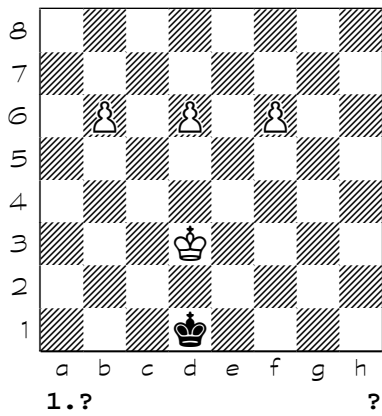
8969



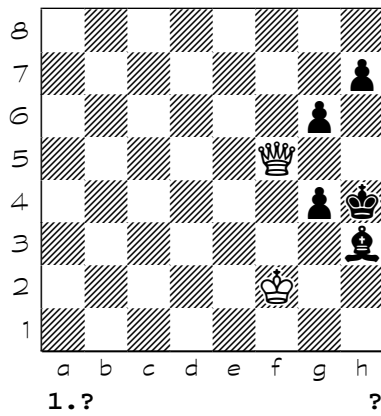
8970



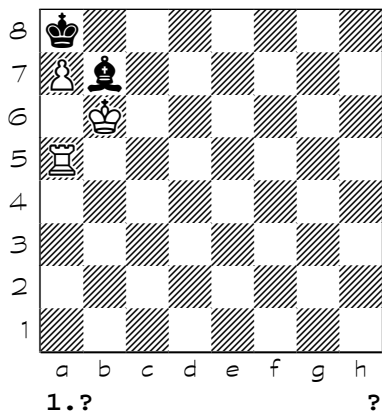
8971



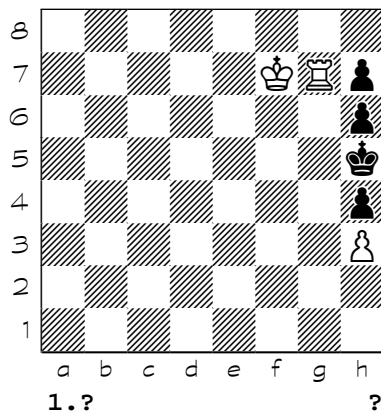
8972



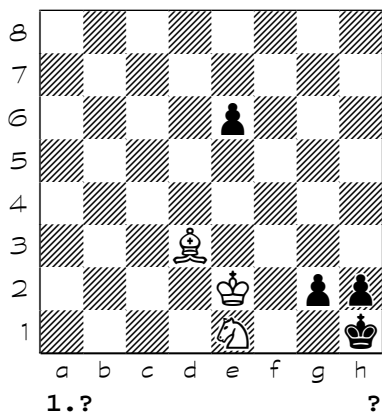
8973



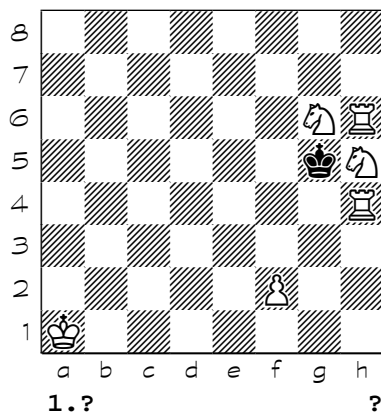
8974



8975

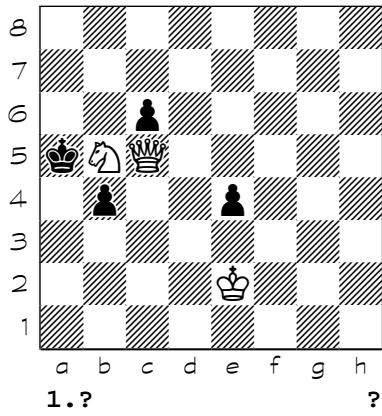


8976

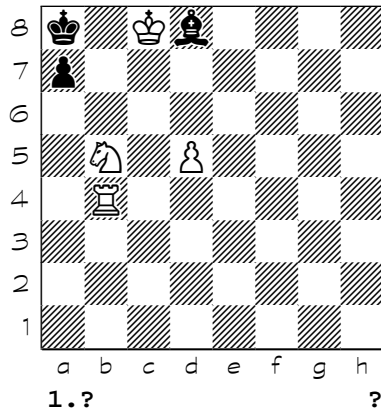


Chess diagrams

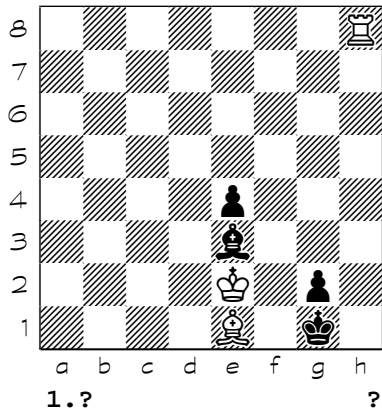
8977



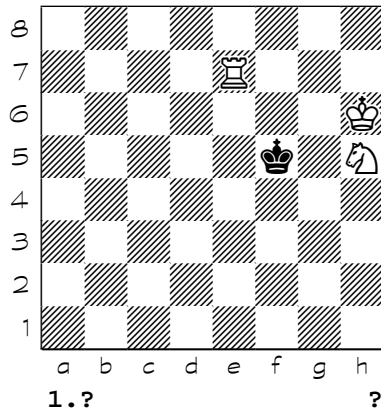
8978



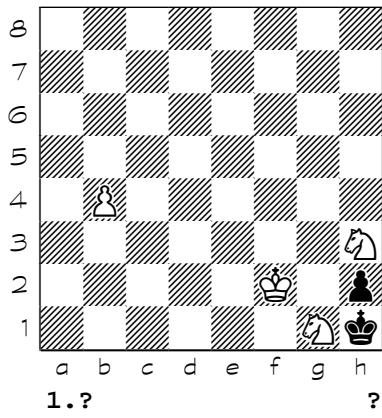
8979



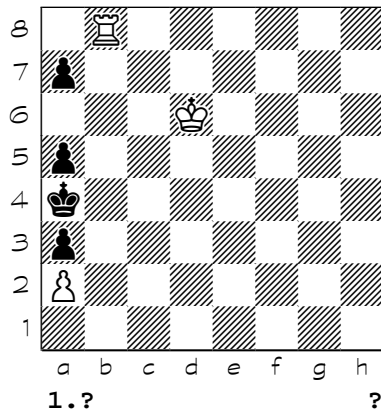
8980



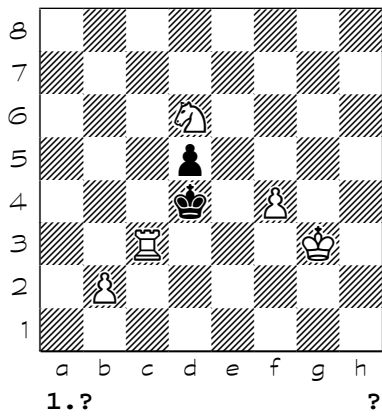
8981



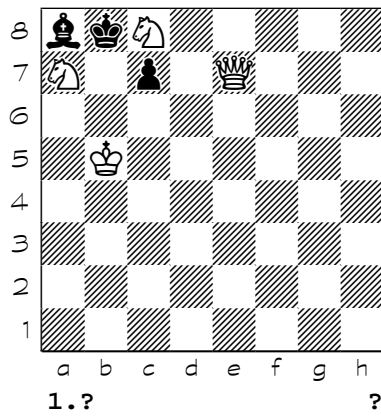
8982



8983

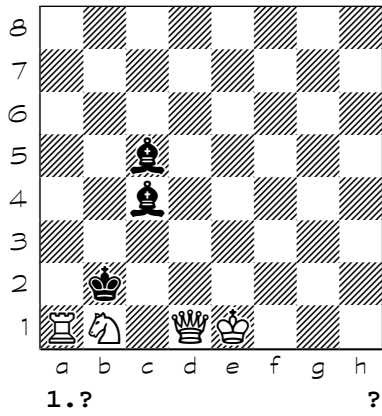


8984

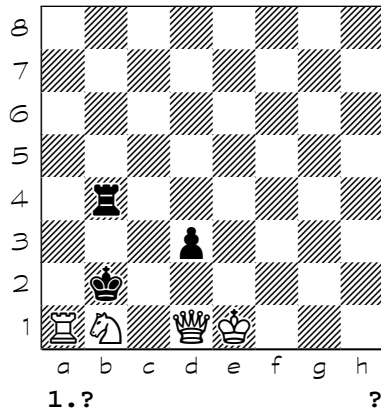


Chess diagrams

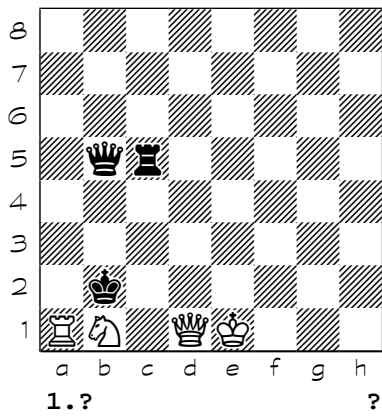
8985



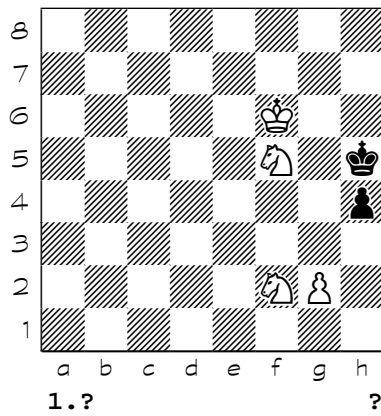
8986



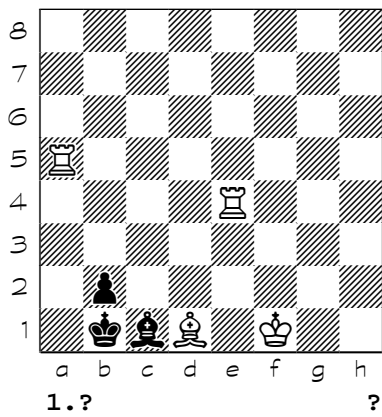
8987



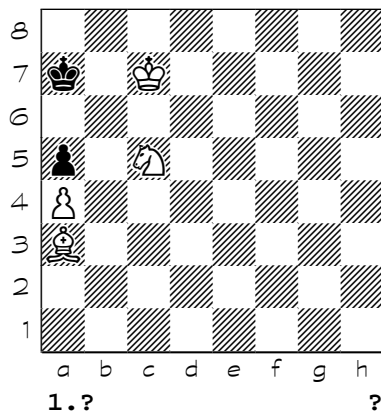
8988



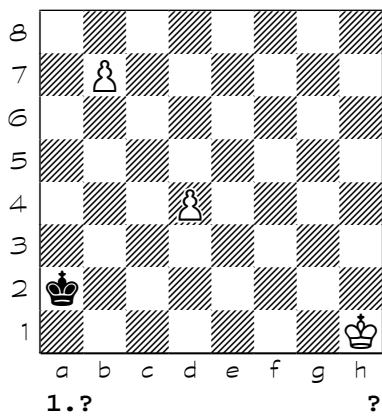
8989



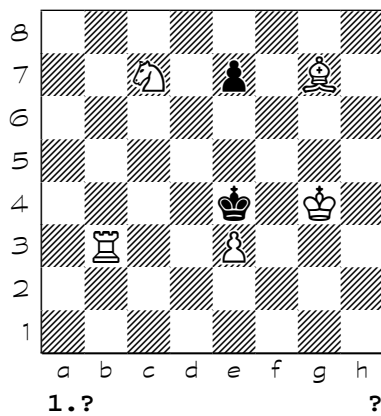
8990



8991

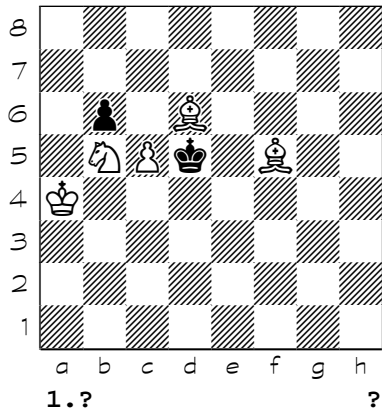


8992

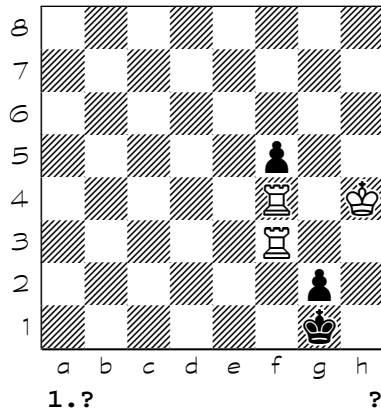


Chess diagrams

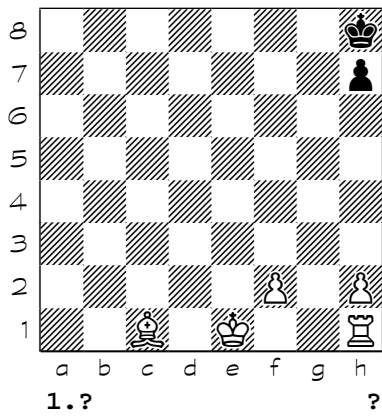
8993



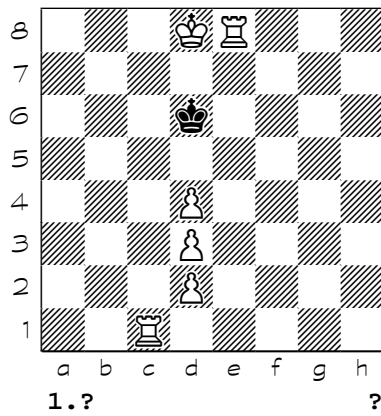
8994



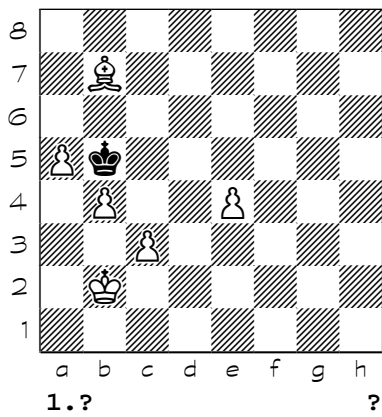
8995



8996



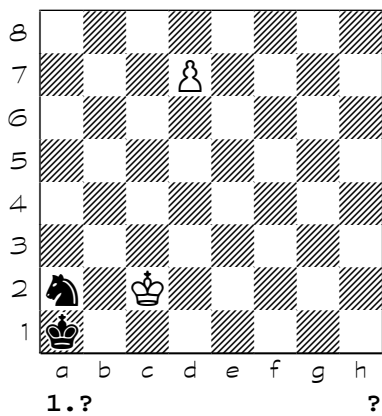
8997



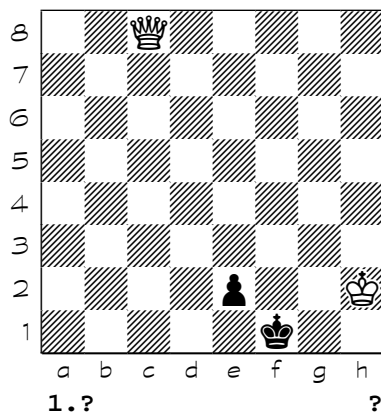
8998



8999



9000



(8801) 1. Ra5 Kc4 2. Qxe4 e5 3. Rxe5 Kb4 4. Qxd4#
(8802) 1. Ra4+ Bd4 (1... Kf5 2. Qd7+ Kf6 3. Rg4 Ke5 (3... Bg7 4. Bb2#) 4. Bb2#) (1... Ke5 2. Qd7 Kf6 3. Rg4 Ke5 4. Bb2#) 2. Qh5 Kd3 3. Qe2+ Kc3 4. Qc4#
(8803) 1. Bf6 Ke8 2. Qg6+ Kf8 (2... Kd7 3. Bxg5 b5 4. Qc6#) 3. Qg7+ Ke8 4. Qe7#
(8804) 1. Ka2 a3 2. Ka1 a2 3. Bc7 Kxa7 4. Qxa2#
(8805) 1. Kh8 Rg3 (1... Nf7+ 2. Kh7 Ng5+ 3. Rxg5+ Rg5 4. Qh2#) 2. Qxg3 Nf7+ 3. Rxf7 Kh6 4. Rh7#
(8806) 1. Na3 Kc3 (1... Rb6 2. Qc1+ Kb3 3. Qc4+ Kb2 4. Ra2#) 2. Rc1+ Kb2 3. Qc2+ Kxa3 4. Ra1#
(8807) {b} Ba3} 1. Qf3+ Rc3 2. Qb7+ Kc2 (2... Nb5 3. Qxb5+ Kc2 4. Qb1#) 3. Ra2+ Kc1 4. Qb2#
(8808) 1. Qd2+ Bd5+ 2. Qxd5+ Qd6+ 3. Qxd6+ Ke8 4. Qe7#
(8809) 1. Nf8 g5 (1... e5 2. Nh7 e4 3. Rxe4 g5 4. Nf6#) (1... Kg5 2. Nxe6+ Kh5 (2... Kf5 3. Re4 g5 4. Nd4#) 3. Kh7 g5 4. Ng7#) 2. Ng6 e5 3. Re4 g4 4. Rxe5#
(8810) 1. Nh7 f5 (1... d6 2. Bf6+ Kg8 3. Bg7 f5 4. Kg6 f4 5. Nf6#) 2. Bf6+ Kg8 3. Kg6 f4 4. Bg7 f3 5. Nf6#
(8811) 1. b5 Kd7 2. b6 Kxc6 3. b7 Kc5 (3... Kb6 4. b8=Q+ Ka5 5. Qb5#) (3... Kd7 4. b8=Q Ke7 5. Qe8#) 4. b8=Q Kc4 5. Qb5#
(8812) {b} h8-b2} 1. Kf6 Kg8 2. Bg7 Kh7 3. g5 Kg8 4. Bc4+ Kh7 5. g6#
(8813) 1. Ne2 Kh1 2. Bxe3 Kh2 3. Kf2 Kh1 4. Bg2+ Kh2 5. Bf4#
(8814) {b}c4-a6} 1. Kd1 Kd4 2. Ke2 Kc3 3. Na3 Kb2 4. Kd2 Ka1 5. Be5#
(8815) 1. Ke7 Kd5 (1... Kf5 2. Rg4 Ke5 3. Bc4 Kf5 4. Be6+ Ke5 5. d4#) 2. Rc4 Ke5 3. Bg4 Kd5 4. Be6+ Ke5 5. f4#
(8816) 1. Nf4+ Kxe3 (1... Ke5 2. Rg6 Kf5 3. Bf3 Ke5 4. Bg4 Ke4 5. Re6#) 2. Ne2 Kd3 3. Bd5 Ke3 4. Kd1 Kd3 5. Rg3#
(8817) 1. Ne7 Kxe3 2. Rg4 Kf2 3. Kd2 Kxf1 4. Ke3 Ke1 5. Rg1#
(8818) 1. Rb6 Nc4 2. Rb3 Na3 3. Rxa3 d2+ 4. Kc2+ d1=Q+ 5. Rxd1#
(8819) 1. Bg8 Ke4 2. Ke2 Kf4 3. Be6 f5 (3... e4 4. Rc5 f5 5. Rxf5#) 4. Rc5 Ke4 (4... e4 5. Rxf5#) 5. Rc4#
(8820) 1. Rb4 Qa7 (1... Qa5 2. Be5+ Ka2 3. Rb2+ Ka1 4. Rxc2+ Qc3 5. Bxc3#) 2. Be5+ Ka2 3. Rb2+ Ka3 4. Bd6+ Qc5 5. Bxc5#
(8821) 1. Nb3 Kg1 2. Nd2 Kh1 3. Ke2 Kg1 4. Nf3+ Kh1 5. Kf2 g1=Q+ 6. Nxxg1#
(8822) 1. Bb2 b6 2. Kc6 b5 3. Kd7 b4 4. Kxe7 b3 5. Kf6 Kh8 6. Kf7#
(8823) 1. Nd2 Ka1 2. Kf2 Ka2 3. Kxg2 Ka1 4. Ne2 Ka2 5. Nc3+ Ka1 6. Nb3#
(8824) 1. Ne2 Kh2 2. Nbc3 Kh1 3. Nxe4 Kh2 4. Nd4 Kg1 5. Nf3+ Kh1 6. Ng3#
(8825) 1. Bc4 Ka8 2. Bxa6 Ka7 3. Bc8 Ka8 4. Kxh3 Ka7 5. Nc6+ Ka8 6. Nb6#
(8826) 1. Bc2 e5 2. Ka5 e4 3. Kb6 Kb4 4. Bc5+ Kc4 5. Ng4 e3 (5... Kd5 6. Bb3#) 6. Nxe3#
(8827) 1. Ng4 Kd4 2. Kb1 Kc3 3. Bd5 Kd4 (3... Kd2 4. Bb4+ Ke2 5. Bg2 Kd1 6. Bf3#) 4. Bf3 Kc3 5. Bc5 Kd2 6. Bb4#
(8828) 1. Bc4 e2 (1... Ka5 2. Bxe3 Ka4 3. Bc5 Ka5 4. Nc1 Ka4 5. Bb5+ Ka5 6. Nb3#) 2. Nc2 Ka5 3. Be3 Ka4 4. Bf4 Ka5 5. Bc7+ Ka4 6. Nc3#
(8829) 1. Bg3 Kg1 2. Bxh2+ Kxh2 3. Kf2 Kh1 4. Rg1+ Kh2 5. Rg3 Kh1 6. Rxh3#
(8830) 1. Kg2 e1=N+ 2. Bxe1 Ke5 3. Kf3 Kf5 4. Bh4 Ke5 5. Kxe3 Kf5 6. Qe4#
(8831) 1. Bd5+ Ka7 2. Bb7 h3 3. Bc8 Ka8 4. Kxh3 Ka7 5. Nc6+ Ka8 6. Nb6#
(8832) 1. g4 g5 2. Kxg5 Kh7 3. Kh5 Kh8 4. g5 Kh7 5. g6+ Kh8 6. g7+ Kh7 7. g8=Q#
(8833) 1. Kg5 Kh7 2. g4 Kh8 3. Kh6 g5 4. Nf4 gxf4 5. g5 f3 6. g6 f2 7. g7#
(8834) 1. Nd6 cxd6 2. Kg3 d5 3. Kf4 d4 4. Ke5 d3 5. Kd6 d2 6. Kc7 d1=Q 7. Bb7#
(8835) {aeie} 1. Be7 Kd4 2. Bf6+ Kd5 3. Bg5 Kd6 4. Bd8 Kd5 5. Bc7 Kd4 6. Be5+ Kd5 7. c4#
(8836) 1. Rf6 Kc3 (1... Kd5 2. Kb4 Ke5 3. Bf4+ Kd4 4. Rd6#) (1... Kb5 2. Kb3 Ka5 3. Nb7+ Kb5 4. Rb6#) 2. Rf4 Kc2 3. Rf1 Kc3 4. Rc1#
(8837) 1. Na3 Kxa3 2. Kc3 Ka2 (2... a4 3. Bb3 axb3 4. Ra5#) 3. Bb3+ Ka1 (3... Ka3 4. Rxa5#) 4. Rh1#
(8838) 1. Nc3 Kb4 2. Nb5 Ka5 3. a3 Ka6 4. Bg4 Ka5 5. b4+ Ka4 (5... Ka6 6. Bc8#) 6. Bd1#
(8839) 1. Kc4 Kd1 2. Kb3 Ke2 3. Ka2 Kd1 4. Rf2 Kc2 5. Ne3#
(8840) 1. Kh1 Kc5 (1... Kc4 2. Bg1 Kb5 3. Rh4 Ka6 4. Bc6 Ka5 5. Ra4#) 2. Rh4 Kb6 3. Rh5 Ka7 4. Bc7 Ka6 5. Ra5#

- (8841) 1. Ke7 Kc4 (1... Ke5 2. Qd3 Kf4 3. Kf6 Kg4 4. Qf5#) 2. Qc2+ Kd5 3. Qd3+ Kc6 (3... Ke5 4. Bg3#) 4. Qd7#
- (8842) 1. Nf4 Kd4 2. Qd2+ Kc5 (2... Ke5 3. Nh3 Kf6 4. Qg5#) 3. Qc3+ Kb5 4. Bc6#
- (8843) 1. Nf3 Ke6 2. Be8 Kd5 3. Bd7 h5 (3... Kc5 4. Qd4#) 4. Qd4#
- (8844) 1. Nd2 Ke5 2. Bf4+ Kd4 3. Qc6 Kd3 4. Qc4#
- (8845) 1. Rf5 Kxh3 2. Rf2+ Kh4 3. Kf5 Kh3 4. Kg5#
- (8846) 1. Rf4 Ke7 (1... Ke5 2. Rf7 Ke6 3. Bd5+ Ke5 4. f4#) 2. Kd5 Kd8 3. Kd6 Kc8 4. Rf8#
- (8847) 1. Ka7 Bc2 (1... Bf5 2. Qh4+ Bh6 3. Qxh6+ Bh7 4. Qf6#) 2. Qh4+ Bh7 3. Ng6+ Kg8 4. Qc4#
- (8848) 1. Ke7 Kf5 2. Qg2 e4 (2... Kf4 3. Qf3+ Kg5 4. Qf6#) 3. Qg3 e3 4. Bc2#
- (8849) 1. e7 Kc7 2. e8=N+ Kc8 3. Ng7 Kc7 4. Ne6+ Kc8 5. Nd6#
- (8850) 1. Bf1 Bf4 2. g3+ Bxg3 3. Ng7 Bf2 4. Nf5#
- (8851) 1. f5 Kh1 2. f6 Kg1 3. f7 Kh1 4. f8=Q Kg1 5. Qf2+ Kh1 6. Qg2#
- (8852) 1. Bf8 h5 (1... Kg8 2. Rf1 h5 3. Bh6 h4 4. Rf8#) 2. Bh6 Kg8 3. Rf1 e3 4. Rf8#
- (8853) 1. Re3 Kxg1 2. Kf3 Kh2 3. Re1 Kh3 4. Rh1#
- (8854) {b} f2-d2} 1. Kb1 Kc3 2. Qd5 Kb4 3. Kc2 Ka3 4. Qa5#
- (8855) 1. Kg3 Kf5 2. Nd8 Ke5 3. Nf7+ Kf5 4. Kf2 Kf4 5. Rf6#
- (8856) 1. Kh4 Kf2 2. Kg4 Kg1 3. Kf3 Kh2 4. Nf4 Kg1 5. Bg2 Kh2 6. Nf1+ Kg1 7. Nh3#
- (8857) 1. Qb4 d4 2. Ka7 d3+ 3. Ka8 Qc2 4. Qd4+ Qb2 5. Qxb2#
- (8858) 1. Kc8 Kc5 2. Re4+ Kd6 3. Bh4 Kc5 4. Bd8 Kd6 5. Be7#
- (8859) 1. Nd2 Bxd4 2. Bc7 Bc3 3. Qe4+ Kc5 4. Qc4#
- (8860) 1. Rg7 Rxa2 (1... Rd8 2. Ra8 Rxa8 3. h7 Nc2 4. h8=Q#) 2. h7 Rf2 3. Kxf2 Nc2 4. h8=Q#
- (8861) 1. Ke6 Kb6 2. Kd7 Ka6 3. Kc8 Kb6 4. Kb8 Ka6 5. Nc7+ Kb6 6. c5# { (ver.V K. e8-f5)}
- (8862) 1. Kf3 Kf5 2. Nc5 Kg5 (2... Ke5 3. Nb7 Kf5 4. Nd8 Ke5 5. Nf7+ Kf5 6. e4#) 3. e4 Kh4 4. Rd5 d6 5. Na4 Kh3 6. Rh5#
- (8863) 1. Bd3 b5 2. Bc2 b4 3. Ka2 b3+ 4. Ka3 bxc2 5. b4#
- (8864) 1. Bg2 c6 2. Bd5 cxd5 3. c6 d4 4. c7 dxc3 5. c8=R Ka2 6. Rxc3 Ka1 7. Ra3#
- (8865) 1. Bg3 Rf1 2. Bf4+ Kd4 3. Bd6 Bd5 4. Bc5#
- (8866) 1. Nb1 Ka1 2. Rxb4 Ka2 3. Nc3+ Ka1 (3... Ka3 4. Rb3#) 4. Rb1#
- (8867) 1. Kh5 d6 (1... d5 2. Bh6 d4 3. Kg5 Ke3 4. Kg4#) 2. Kh4 d5 3. Kh3 (3. Rh2 d4 4. Be2#) 3... d4 4. Be2#
- (8868) 1. Kc3 e5 2. Nh4+ Kf4 3. Bb3 Ke3 4. Bd1 Kf4 5. Kc4 Ke3 6. Ng2# { (ver.V.K. e8-f7,c3-b2)}
- (8869) 1. Rg1 g3 2. Bh1 g2+ 3. Ke2 gxh1=Q 4. Rg8#
- (8870) 1. Kd2 Kc4 2. Ra5 Kb3 3. Kd3 Kb2 4. Nd4 Kb1 5. Kc3 Kc1 6. Ra1#
- (8871) 1. Nf5 Kc5 2. Ke5 Kc6 3. Nd6 Kc5 4. Nc4 Kc6 (4... Kxc4 5. Kd6 Kd4 6. Rb4#) 5. Na5+ Kc5 6. b4#
- (8872) 1. Re6+ Kd8 2. f7 Kc7 3. f8=Q b3 4. Qf7+ Kb8 5. Re8#
- (8873) 1. Bf3 f5 2. Kb5 f4 3. Kc6 Kc4 4. Bd5+ Kd4 5. Nh4 Ke5 (5... f3 6. Nxf3#) 6. Bc3#
- (8874) 1. a4 Kb6 2. Rc4 Ka5 3. Kf2 Kb6 4. Ke3 Ka5 5. Kd4 Kb6 6. Rc5 a5 7. Rc6#
- (8875) 1. Rd1 Na3 2. Na5 Nxc2 3. Rd3+ Kb2 4. Nc4+ Kc1 5. Na2+ Kb1 6. Nc3+ Kc1 7. Rd1#
- (8876) 1. c4 e5 (1... Ke5 2. Nf1 Kf5 3. Ne3+ Ke5 4. d4#) 2. d3 e4 3. dxe4+ Ke5 4. Nf3#
- (8877) 1. Rb7 Ka5 2. Bd6 b5 3. Bc5 Ka4 4. Bd5 b4 5. Bc4 Ka3 6. Bd4 b3 7. Bc3 Rd1 8. Ra7#
- (8878) 1. Be3 Kb8 2. Bb6 Kc8 3. Bf5+ Kb8 4. Ba7+ Ka8 5. Be4#
- (8879) 1. f8=Q Kxh5 (1... Kh7 2. f4 g5 (2... g6 3. Bg4 g5 4. Bf5#) 3. f5 g4 4. Bg6#) 2. Qxg7 Kh4 3. Qg6 Kh3 4. Qg3#
- (8880) 1. Rd8 Bh2 2. e5 Bxe5 3. Bb4 Bg3 4. Nd4+ Kc7 5. Ba5#
- (8881) 1. Rg5 Ba1 2. Bg3 Bd4 3. Rg6+ Kf5 4. Kf7 Bc5 5. Rg5#
- (8882) 1. Ke7 Ke5 2. Nb3 Ke4 3. Rc3+ Kd5 4. Rc5#
- (8883) 1. Rf8 Kh5 (1... Kh7 2. g6+ Kxg6 3. Bf5+ Kh5 4. Rh8#) 2. Rh8+ Kg6 3. Bd7 Kf7 4. Be8#
- (8884) 1. Bh1 g3 2. Rg2 gxh2 3. Rf2 Kg3 4. Rf3#
- (8885) *
- (8886) 1. Rg8 Ke4 (1... f5 2. Nxf5 Kf3 3. Ra4 (3. Nd6 Kf4 4. Rf5#) 3... Kf2 4. Rf4#) 2. Nf5 Kf3 3. Nd6 Kf4 4. Rf5#
- (8887) 1. Nf4 d4+ 2. Kf3 d3 3. Ke3 d2 4. Re6#
- (8888) 1. a4 h2 2. Bxh2 Kxh2 3. a5 Kh1 4. a6 h3 5. a7 Kh2 6. a8=R Kh1 7. Ra2 h2 8. Ra1#

- (8889) 1. Bd1 Kd5 (1... Ke6 2. Bb3+ Kd6 3. c4 Ke6 4. c5#) 2. Bb3+ Kd6 3. c4 Ke6 4. c5#
- (8890) 1. Ke1 d2+ 2. Kf2 d1=N+ 3. Kf3 Ne3 4. Rh8#
- (8891) 1. Kd6 Kb3 (1... d4 2. Bd3 Kb3 3. Ra3+ Kb4 4. Bd2#) 2. Bd3 Kb4 3. Ra3 d4 4. Bd2#
- (8892) 1. Rg3 Kh2 (1... e4 2. Bf4 Kh2 3. Rf3+ Kg1 4. Rf1#) 2. Nf1+ Kh1 3. Be3 e4 4. Rg1#
- (8893) 1. Kf3 Kg1 2. g4 Kh1 3. Kg3 Kg1 4. Be3+ Kh1 5. Bg2#
- (8894) 1. Nh5 Kh1 2. Ng3+ Kh2 3. Nf1+ Kh1 4. g4 h5 5. g5 h4 6. g6 h3 7. g7 h2 8. Ng3#
- (8895) 1. Ba4 Ke6 2. Bc6 Ke7 3. Ng3 Ke6 4. Nf5 Kxf5 5. Bd7#
- (8896) 1. Bf2 Kf4 2. Kd3 Kf3 3. Rf5+ Kg2 4. Ke2 Kh2 5. Kf3 Kh3 6. Rh5#
- (8897) {b} c8-d8} 1. Nd4 Kd8 2. Ne6+ Kc8 3. Be4 Kb8 4. Bc6 (4. Rd7 Kc8 5. Rd8#) 4... Kc8 5. Rh8#
- (8898) 1. Ba2 Ka3 (1... a3 2. Ke7 a4 3. Qd2+ Kc5 4. Qd6#) 2. Qb1 b4 3. Bb3 axb3 4. Qa1#
- (8899) 1. Bb2 Bxb2 2. b5 Bd4 3. h7 Bc3 (3... Bxa7 4. h8=Q+ Bb8 5. Qh1#) 4. b6 Bd4 5. b7#
- (8900) 1. Na2 Kd4 2. Ra5 Kc4 3. Bc2 Kd4 4. Bb3 Kd3 5. Rd5#
- (8901) 1. Rb8 Kc7 2. Kc5 Kd7 3. Rf8 Kc7 (3... Ke6 4. Bc8#) 4. Rf7#
- (8902) 1. h3 Kh7 2. h4 Kh6 3. h5 Kh7 4. Nf6+ Kh6 5. Rg6#
- (8903) {iia.dao.} 1. Rg6 Bc5 2. Rg2+ Kh1 3. Rg1+ Bxg1 4. Qxg1#
- (8904) 1. Bh4 Ke4 (1... f3 2. Rg4 Ke2 3. Re4+ Kf1 4. Re1#) 2. Rg5+ f3 3. Bg3 Ke3 4. Re5#
- (8905) 1. Ra2 Kxd6 (1... b3 2. Ra7+ Ke8 3. Nc6 b2 4. Rd8#) 2. Ra7 b3 3. e4 b2 4. e5#
- (8906) 1. Kc4 f6 (1... Kc2 2. Re2+ Kd1 3. Kd3 f5 4. Bd2 f4 5. Re1#) 2. Kb3 f5 3. Kb2 Kd1 4. Kc3 Kc1 5. Re1#
- (8907) 1. Ne2+ Kf3 2. Rh5 Ke4 3. Rxc5 Kf3 4. Kd2 g3 5. Bh3 g2 6. Rg4 g1=Q 7. Rf4#
- (8908) 1. Ne2 g1=Q 2. Bxg1 Kb1 3. Nc3+ Ka1 4. Nxa2 Kb1 5. Bc5 Ka1 6. Ba3 Kb1 7. Nc3+ Ka1 8. Bb2#
- (8909) 1. Nf3 Kb5 2. Ne5 Ka6 3. b4 Kb5 4. Kb3 Ka6 5. Nf3 Kb5 6. Nd4+ Ka6 7. b5#
- (8910) 1. Kd2 Kf2 (1... Kh2 2. Rh7+ Kg1 3. Nc6 Kf1 4. Rf7+ Kg1 5. Nd4 Kh2 6. Rh7+ Kg1 7. Ne2+ Kf1 8. Rf7#) 2. Rf7+ Kg1 3. Nc6 Kh1 4. Rh7+ Kg1 5. Nd4 Kf1 6. Rf7+ Kg1 7. Ne2+ Kh1 8. Rh7#
- (8911) 1. Kc2 b4 2. Kb3 Kb5 3. Ne7+ Kb6 4. Nc8#
- (8912) 1. Bc4 ({iia.dao.} 1. Ng4+ Kd4 2. Bc2 Kd5 3. Rf6 Kd4 4. Rd6#) (1. Rf3+ Kd2 2. Bc4 Kc2 3. Rf2+ Kd1 4. Kc3 Ke1 5. Rf1#) 1... Kd2 2. Rf2+ Ke3 3. Ng4+ Ke4 4. b6 Kd4 5. Rf4#
- (8913) 1. Qf5 Kd4 (1... d5 2. Qg4 d4 3. Nd1+ Kd3 4. Qe2#) 2. Kd2 d5 3. Qe6 Kc5 4. Qb6#
- (8914) 1. Ra2 Be3 (1... Bf2 2. Rxf2 Kg1 3. Rfxh2 Kf1 4. Rg8 Ke1 5. Rg1#) (1... Bd4 2. Rhxh2+ Kg1 3. Rhd2 Kh1 4. Rxd4 Kg1 5. Rd1#) 2. Rhxh2+ Kg1 3. Rhe2 Bf2 4. Rxf2 Kh1 5. Rf1# (5. Ra1#)
- (8915) 1. Be3 e4 2. Ng5 Kh6 3. Nge6+ Kh5 4. Ng7#
- (8916) 1. Nd3 {g1N 2.Kh2 Nf3 3.Kh1 Nd2 4.Ng3x.} 1... g1=Q 2. Ng3+ Qxg3+ 3. Kxg3 Kg1 4. Rd1#
- (8917) 1. Nh4 g5 (1... g6 2. a6 g5 3. a7 g4 (3... gxh4 4. a8=Q h3 5. Qg8#) 4. a8=Q g3 5. Qg2# (5. Qa7#)) 2. a6 gxh4 3. a7 h3 4. a8=R Kg2 5. Rg8#
- (8918) 1. Rg3 g5 2. Rh3+ Kg4 3. Re3 Kh4 4. Re5 Kg4 (4... g4 5. Rh5#) 5. Re4#
- (8919) 1. Rd6 Nf7 (1... Nc6 2. Re6 Ne5+ 3. Rxe5 b5 4. Re8#) 2. Kxf7 Kh7 3. Rb6 Kh8 4. Rh6#
- (8920) 1. Ba8 gxh3 2. b7 Kh1 3. b8=Q+ Kh2 4. g4#
- (8921) 1. Bf4 Kc5 2. Bd2 Kd5 3. Be3 Ke5 4. Rf4 Kd5 (4... d5 5. d4#) 5. Rf5#
- (8922) 1. b7 Kc7 2. b8=Q+ Kxb8 3. Kd7 Ka7 (3... Ka8 4. Kc7 Ka7 5. b6+ Ka8 6. Bb7#) 4. Kc7 Ka8 5. Bb7+ Ka7 6. b6#
- (8923) 1. Ba6 Kd4 (1... c5 2. Qe7 c4 3. Bb7+ c6 4. Qe5#) 2. Qa3 Kd5 3. Qe7 Kd4 4. Qe5#
- (8924) 1. Be2 Ke4 (1... e5 2. Rd8 Ke4 3. Ke6 Kf4 4. Rg8 e4 5. Rg4#) 2. Kxe6 Kd4 3. Kd6 Ke4 4. Rf8 Kd4 5. Rf4#
- (8925) 1. Bc3 d5 2. Ne8 d4 3. Nf6+ Ke5 4. Bb4 Ke6 (4... d3 5. Re3+ Kd4 6. Re4#) 5. Rh7 Ke5 6. Re7#
- (8926) 1. Qg6 Bxf4 (1... Kd4 2. Be5+ Kc5 3. Qb6+ Kd5 4. Qd6#) 2. Qb6 Bb8 3. Ne3+ Ke5 4. d4#
- (8927) 1. Nd1 cxd1=Q (1... c1=Q+ 2. Nc3+ Ka3 3. Ra5+ Kb2 4. Ra2#) 2. Rxd1 Ka3 3. Rd2 Ka4 4. Ra2#
- (8928) 1. Rc3 (1. Kg2 Kd6 2. Nb5+ Kd7 3. Rc7+ Kxe8 4. Nd6#) (1. Kg1) (1. Kh2) 1... Kd6 2. Nf4 Kd7 3. Ng6 Kd6 4. Rd8#
- (8929) 1. Nf3 dxe4 (1... e2 2. Qd2+ Kxe4 3. Kg4 d4 4. Qxd4#) (1... d4 2. Bd5 (2. Bh7 d3 3. Qxd3 e2

4. Qe4#) (2. Bg6) 2... Kf5 3. Qg1 Kf6 4. Qg5#) 2. Qd6+ Kxf3 3. Qh2 e2 4. Qg3#

(8930) 1. Ra8+ Ra4 2. Rxa4+ bxa4 3. Nb4 a3 4. Nc2+ Ka2 5. Nd4 Ka1 6. Kc2 Ka2 7. Ne2 Ka1 8. Nc1 a2 9. Nb3#

(8931) 1. Ng4+ Ke4 2. Bg6+ Kd5 3. Rf4 Ke6 4. Be8 Kd5 5. Bf7#

(8932) 1. Ba8 f6 2. Rb7 Ke4 (2... Kf3 3. Rb2+ Kf4 4. Rf2#) 3. Rd7+ Kf4 4. Rd4#

(8933) 1. Be5 Kh6 (1... Kh4 2. Kg6 Kg4 3. Nd6 Kh4 4. Nde4 Kg4 5. Nf2+ Kh4 6. Nf3#) 2. Kg4 Kg6 3. Nb6 Kh6 4. Nd7 Kg6 5. Nf8+ Kh6 6. Nf7#

(8934) 1. Rh8 Kxa7 2. Rxh1 Kb8 3. Ra1 Kc8 4. Ra8#

(8935) 1. Kb4 Kd4 2. Nd3 Kd5 3. Nf4+ Kd4 4. e3#

(8936) 1. Kd7 Kxa7 2. Kc7 Ka6 3. Rg5 Ka7 4. Ra5#

(8937) 1. Ke2 c5 2. Bb8 Kd4 3. Nc2+ Kxe4 4. Ne3 Kd4 5. Rd3+ Ke4 6. Rc3 Kd4 7. Rc4#

(8938) 1. Bf2 f4 2. g4 f3 3. Nh5 Kd5 4. Kc3 Ke5 (4... Ke4 5. Re6+ Kd5 6. Nf4#) 5. Kc4 Ke4 6. Re6#

(8939) 1. Bf6 Kxd2 2. Bxd4 Kd3 3. Bf2 Kd2 4. Kg7 Kd3 5. Kf6 Kd2 6. Ke5 Kd1 (6... Kd3 7. Be1 Ke3 8. Rc3#) 7. Be3 Ke1 8. Rc1#

(8940) 1. Rc3+ Kg4 2. Nd7 Kf4 3. Nf6 Ke5 4. Rc4 Kd6 5. Bb4+ Ke5 6. Re4#

(8941) 1. Nd3 Kb1 2. Nc5 Kc1 3. Nxb3+ Kc2 4. f4 Kb1 5. Bd3#

(8942) 1. Nd6 Ka5 2. Rxb3 Ka6 3. Rb7 Ka5 4. Ne4 Ka4 5. Nc5+ Ka5 6. b4#

(8943) 1. Re1 Kd2 (1... d3 2. Bc5 d2 3. Nb4+ Kc3 4. Rd1 Kc4 5. Be3 Kc3 6. Rxd2 Kc4 7. Rc2#) 2. Bb4+ Kc2 3. Re2+ Kd1 4. Rg2 d3 5. Nc3+ Ke1 6. Bc5 d2 7. Rg1#

(8944) 1. Kb3 Kf5 2. f3 Ke5 3. e4 Kd4 4. Qd6#

(8945) 1. Rg7 Bg1 2. Nxg3+ Kh4 3. Nf5+ Kh5 4. g4#

(8946) 1. Ng5 Ke8 (1... e4 2. Rf7+ Kg8 3. Kxe3 Kh8 4. Rh7#) 2. Ne4 Kd8 (2... Kf8 3. Nf6 e4 4. Rf7#) 3. Nd6 e4 4. Rd7#

(8947) 1. Qc2 a3 2. Ka2 Ka5 3. Qc6 (3. Kxa3) 3... Kb4 4. Qc7 Ka4 5. Qc3 b4 6. Qc6+ Ka5 7. Kb3 a2 8. Kc4 a1=Q 9. Qb5#

(8948) 1. Qb4 Kb2 2. Qa5 Kc1 3. Qc3+ Kd1 4. Bf3#

(8949) 1. Qb5+ Kc2 2. Ba5 Kd1 3. Qf1+ Kc2 4. Qe2+ Kb3 5. Qxa2#

(8950) 1. O-O Kh3 2. Rf4 Kg3 3. Re4 Kh3 4. Rd4 g3 (4... Kg3 5. Rxd3#) 5. Rh4#

(8951) 1. Bg5 Kh7 2. h6 Kh8 3. Kg6 Kg8 4. h7+ Kh8 (4... Kf8 5. h8=Q#) 5. Bf6#

(8952) 1. Kc7 Kc5 (1... Nd5+ 2. Kd6 Nf6 3. Kc6 Nd5 4. Qe4#) 2. bxc3 Kb5 3. Qa8 Kc5 4. Qc6# (4. Qa5#)

(8953) 1. Qc6 a6 (1... Kf4 2. Qc5 c6 3. f3 a5 4. Kg2 a4 5. e3#) (1... Kf5 2. Kg3 Ke5 3. e3 Kf5 4. f4 a5 5. e4#) 2. Kg3 a5 3. f4+ Kh5 4. f5 Kg5 5. Qg6#

(8954) 1. Nd7 Kh8 2. g4 Kg8 3. g5 Kh8 4. Kf7 Kh7 5. Ne5 Kh8 6. Ng4 Kh7 7. g6+ Kh8 8. g7+ Kh7 9. g8=Q#

(8955) 1. Qb6 d4 (1... h3 2. Qxc5 Kb3 3. Qc3+ Ka2 4. Bc1 Kb1 5. Qb2#) 2. Qb1 h3 3. Qd3 h2 4. Qc4+ Ka3 5. Bc1#

(8956) 1. Kb6 Kb4 2. Ba4 Kc4 (2... Kxa4 3. Kc5 Ka5 4. Ra3#) 3. Bb5+ Kb4 4. a3#

(8957) 1. Rh1 Kxh1 2. Kf2 Kxh2 3. Ne3 Kh1 4. Nf1 h2 5. Ng3#

(8958) 1. Kxb4 Kd4 (1... Kd2 2. Qe2+ Kc1 3. Kc3 (3. Kb3) (3. Ka3) 3... Kb1 4. Qb2#) 2. Qf4 Kd3 3. Qc1 Kd4 4. Qc3#

(8959) 1. Kd2 Kc4 (1... Ke4 2. Rb5 Kd4 3. Bf3 Kc4 4. Rb4#) 2. Rf5 Kd4 3. Bb3 Ke4 4. Rf4#

(8960) 1. Kf5 e4 2. Kf6 e3 3. Rf3 Kxh5 4. Rh3#

(8961) 1. Kd3 Kf3 2. Rg6 Kf2 3. Bc6 Ke1 4. Rg1+ (4. Bb6 Kd1 5. Rg1#) (4. Rf6 Kd1 5. Rf1#) 4... Kf2 5. Bb6#

(8962) 1. Kc2 Bc1 2. Kxc1 c2 3. Kxc2 a2 4. Nc6 b4 5. Na5 b3+ 6. Nxb3#

(8963) 1. Rf5 Kg6 2. f8=Q Kh7 3. Qf7+ Kh6 4. Rh5#

(8964) 1. g8=B Ka8 2. Bc4 Ka7 3. b6+ Ka8 4. Bd5#

(8965) 1. d4 Kg4 2. e3 Kh4 3. Nf5+ Kg4 4. f3#

(8966) 1. e4 h5 2. e5 h4 3. e6 h3 4. e7 h2 5. e8=N h1=Q 6. Nc7#

(8967) 1. h4 c5 2. h5 c4 3. h6 Kh2 4. h7 Kg1 5. Bh3 Kh1 6. h8=Q Kg1 7. Qg7+ Kh1 8. Qg2#

(8968) 1. Rg3 Rb2 (1... Kd2 2. Rf2+ Ke1 3. Rxa2 Kf1 4. Rc3 Ke1 5. Rc1#) 2. Rh3 Kd2 3. Rf2+ Ke1 4. Rxb2 a3 5. Rh1#

(8969) 1. d4 Ka2 2. d5 Ka3 3. d6 Ka4 4. d7 Ka5 5. d8=Q+ Ka6 6. Qb8 Ka5 7. Qa7# (7. Qb5#)

(8970) 1. Bg2 Ke2 2. Rf3 Ke1 3. Bf1 Kd1 4. Re3 Kc1 5. Re1#
(8971) 1. f7 Kc1 2. b7 Kb2 3. b8=Q+ Ka3 4. Kc3 Ka4 5. Qb4#
(8972) 1. Qf6+ Kh5 2. Kg3 Kh6 3. Kh4 g3 4. Qf8#
(8973) 1. Rf5 (1. Rh5 Bc8 2. Rh7 Bb7 3. Rh8+ Bc8 4. Rxc8#) 1... Bc8 2. Rf7 Bd7 3. Rf8+ Be8 4. Rxe8#
(8974) 1. Rg6 hxg6 2. Kf6 g5 3. Kf5 g4 4. hxg4#
(8975) 1. Be4 Kg1 2. Nf3+ Kh1 3. Kf2 e5 4. Nd4 exd4 5. Bxg2#
(8976) 1. f4+ Kxh6 2. Ne5 Kh7 3. Rg4 Kh8 (3... Kh6 4. Rg7 Kxh5 5. Rh7#) 4. Nf7+ Kh7 5. Rg7#
(8977) 1. Nc3+ Ka6 2. Qxc6+ Ka7 3. Nb5+ Kb8 4. Qb6+ (4. Qc7+) (4. Nd6) 4... Ka8 5. Nc7#
(8978) 1. Re4 a5 (1... Bb6 2. Re7 a6 3. Ra7+ Bxa7 4. Nc7#) 2. Re6 Bb6 3. Rxb6 a4 4. Ra6# (4. Rb8#)

(8979) 1. Bg3 Ba7 (1... Bb6 2. Bh2+ Kh1 3. Bc7+ Kg1 4. Bxb6+ e3 5. Bxe3#) (1... Bc5 2. Bh2+ Kh1 3. Bd6+ Kg1 4. Bxc5+ e3 5. Bxe3#) 2. Bh2+ Kh1 3. Bb8+ Kg1 4. Bxa7+ e3 5. Bxe3#
(8980) 1. Re3 Kg4 2. Kg6 Kh4 3. Kf5 Kxh5 4. Rh3#
(8981) 1. b5 hxg1=Q+ 2. Nxg1 Kh2 3. b6 Kh1 4. b7 Kh2 5. b8=Q+ Kh1 6. Qh8#
(8982) 1. Kc6 a6 2. Rb5 axb5 3. Kc5 b4 4. Kc4 b3 5. axb3#
(8983) 1. Ne8 Ke4 2. Kg4 Kd4 3. Kg5 Ke4 4. Nd6+ Kd4 5. Nf5+ Ke4 6. Re3#
(8984) 1. Qb4 Bh1 (1... c5 2. Qf4+ Kb7 3. Qd6 c4 4. Qb6#) 2. Ka6+ Ka8 3. Nb6+ cxb6 4. Qf8#
(8985) 1. Nd2 Bf2+ 2. Kxf2 Kc3 3. Ne4+ Kb2 (3... Kb4 4. Qa4#) 4. Qb1#
(8986) 1. Kd2 Kxa1 2. Nc3+ Kb2 3. Qb1+ Ka3 4. Qa2#
(8987) 1. Qd4+ Kb3 2. Ra3+ Kc2 3. Ra2+ Kxb1 4. Qa1#
(8988) 1. Nh3 Kg4 2. Ke6 Kh5 3. Kf7 Kg4 4. Kf6 Kh5 5. Nf2 h3 6. g4#
(8989) 1. Be2 Bd2 (1... Kc2 2. Rc5+ Kd2 (2... Kb3 3. Bd1+ Ka2 4. Ra4+ Kb1 5. Bc2#) 3. Kf2 b1=Q 4. Rd4+ Qd3 5. Rxd3#) 2. Rc5 Bb4 3. Rxb4 Ka2 4. Ra4+ Kb1 5. Bd3#
(8990) 1. Nd7 Ka6 2. Kc8 Ka7 3. Bc5+ Ka8 4. Nb6+ Ka7 5. Nd5+ Ka8 6. Nc7#
(8991) 1. b8=R Ka3 2. d5 Ka4 3. d6 Ka5 4. d7 Ka4 (4... Ka6 5. d8=Q Ka7 6. Qb6#)
(8992) 1. Rc3 e5 2. Ne8 Kd5 3. Kf5 e4 4. Nf6+ Kd6 5. Bf8#
(8993) 1. c6 Kxc6 (1... Kc4 2. c7 Kd5 3. c8=B Kc4 (3... Kc6 4. Be4#) 4. Bce6#) 2. Be6 Kb7 3. Bd7 Ka6 (3... Ka8 4. Bc6#) 4. Bc8#
(8994) 1. Kg3 Kh1 2. Rf1+ g1=Q+ 3. Kh3 Qxf1+ 4. Rxf1#
(8995) {a} -Nn1 } 1. Rg1 h6 2. f4 h5 3. f5 h4 4. f6 h3 5. f7 Kh7 6. f8=N+ Kh8 7. Bb2#
(8996) 1. Rc3 Kd5 2. Ke7 Kxd4 3. Kf6 Kd5 4. Rd8#
(8997) 1. Kb1 Kc4 (1... Ka4 2. Ka2 Kb5 3. Kb2 Ka4 4. Bc6#) 2. Kc2 Kb5 3. Kb2 Ka4 (3... Kc4 4. Ba6#) 4. Bc6#
(8998) 1. Qc2 Ke5 (1... Ke3 2. Nh3 Kf3 (2... Kd4 3. Kf7 Ke5 4. Qd2 Ke4 5. Qf4#) 3. Qg6 Ke2 4. Qd3+ Ke1 5. Nc2#) (1... h3 2. Nhx3 Ke5 3. Kf7 Kd4 4. Ke6 Ke3 5. Qd3#) 2. Qe4+ Kd6 3. Na6 Kd7 4. Qe6+ Kd8 5. Nf7#
(8999) 1. d8=R Nb4+ (1... Nc3 2. Kxc3 Ka2 3. Rd1 Ka3 4. Ra1#) 2. Kb3 Nd3 3. Rxd3 Kb1 4. Rd1#
(9000) 1. Qc4 Kf2 2. Qf4+ Ke1 3. Qd4 Kf1 4. Qg1#