

Rozsáhlá sbírka šachových problémů (mnohotažek)

Strmilovská zastavení bohyně Caissy

6.díl

diagramy 1001-1200

Trenérův pláč

Dnešní mládež je tak tupá,
Že by jeden plakal.
Skvělý trenér nemá šanci
Byť sebevíc makal.

Samý debil, samé pako
Jenom v našem kraji.
Jinde je to samý talent
Jenom my jsme v háji!

Malí blbci zabeďnění
z trenéra maj srandu
trenér hořkne, tiše slzí
proklíná tu bandu:

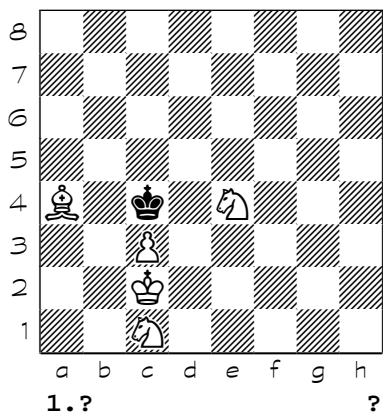
\\\\"Že jsou tupí, že jsou drzí
To je vcelku rovno
Horší je, že nechtěj platit
Vydělám si hovno ...\\\\"

Mirek Dušín

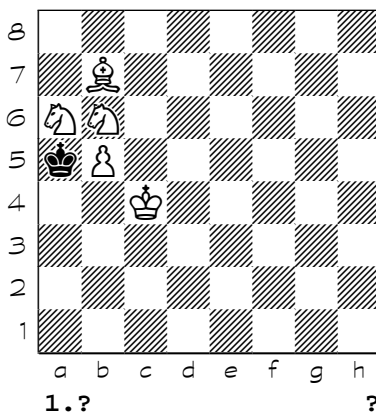
<http://www.strmilov.cz/>

Chess diagrams

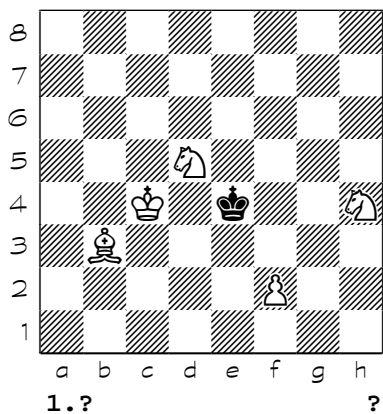
1001



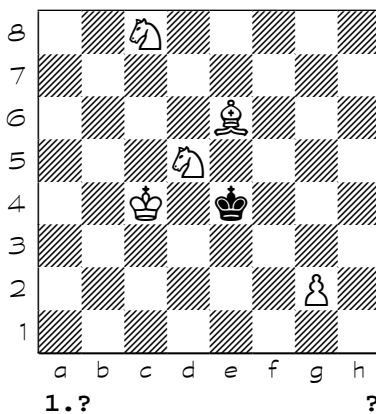
1002



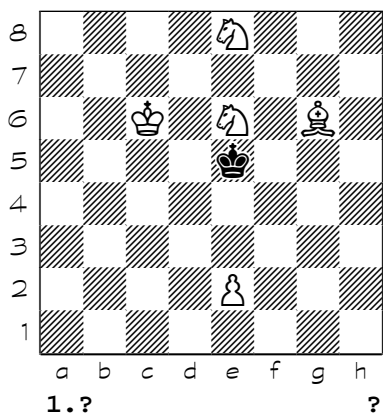
1003



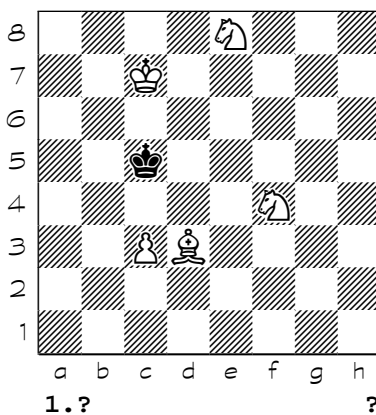
1004



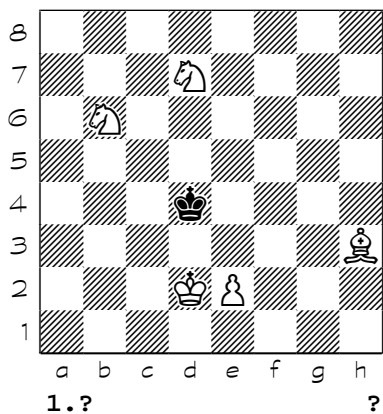
1005



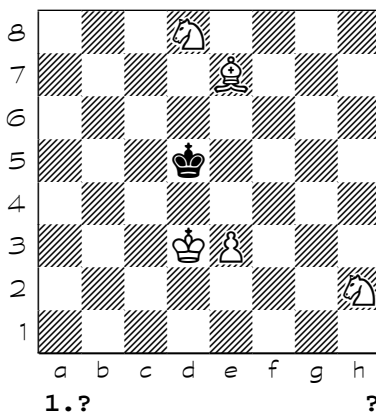
1006



1007

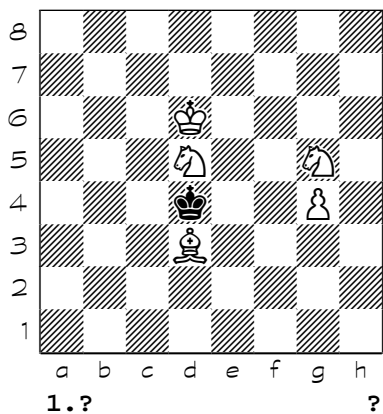


1008

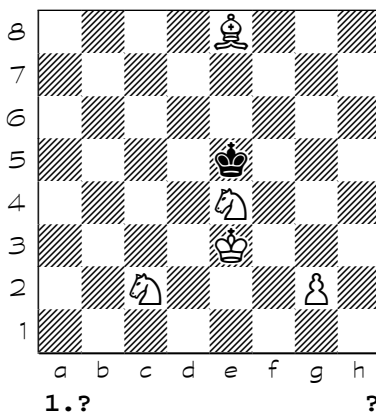


Chess diagrams

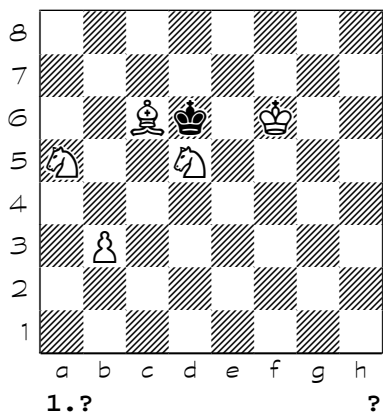
1009



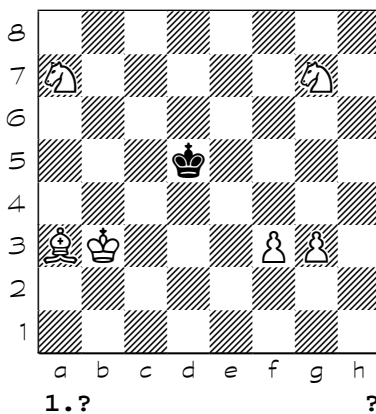
1010



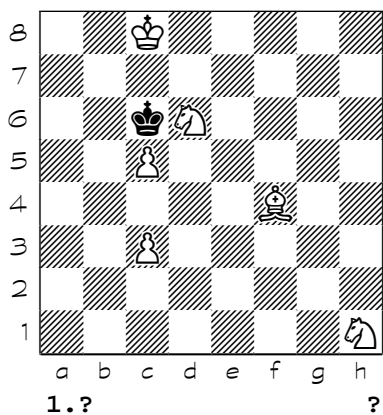
1011



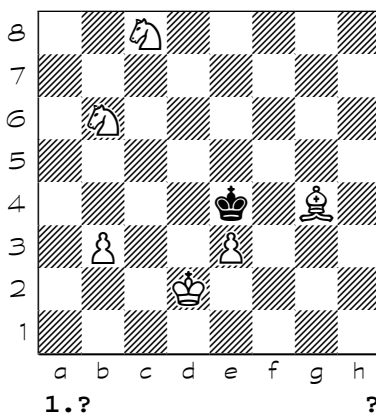
1012



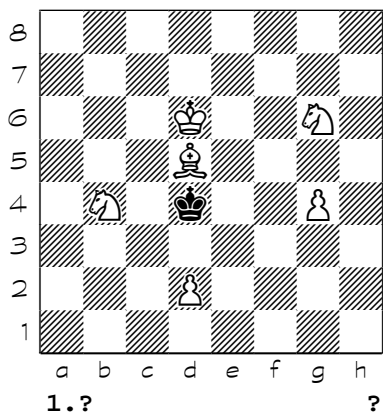
1013



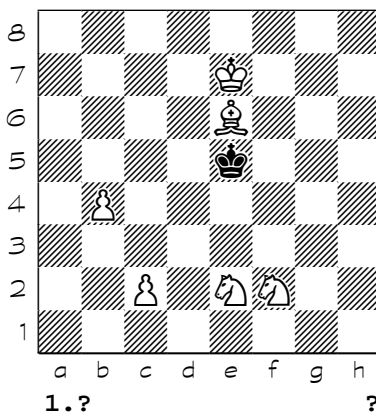
1014



1015

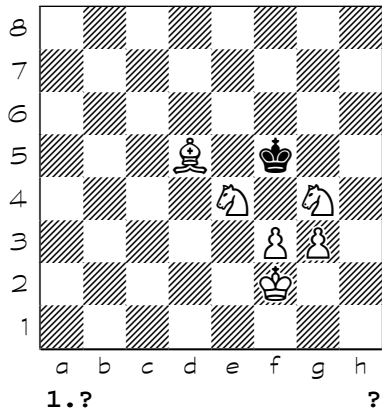


1016

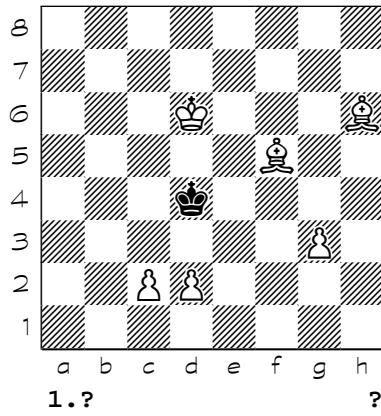


Chess diagrams

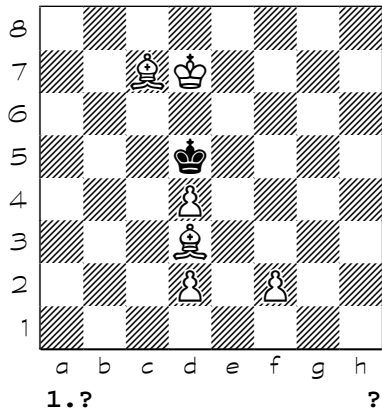
1017



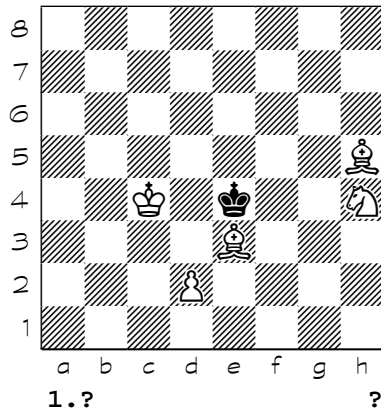
1018



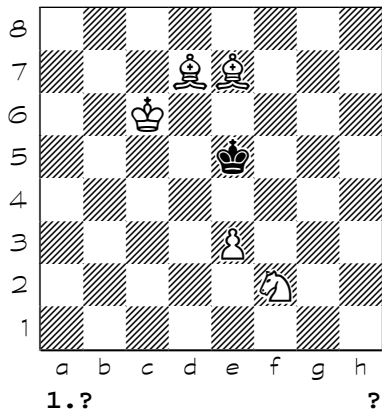
1019



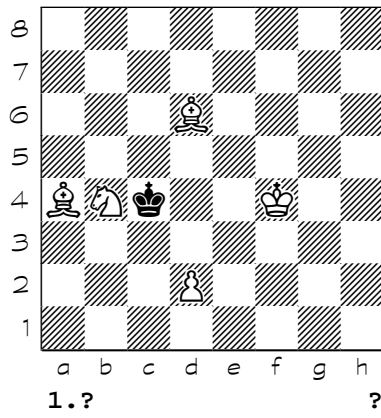
1020



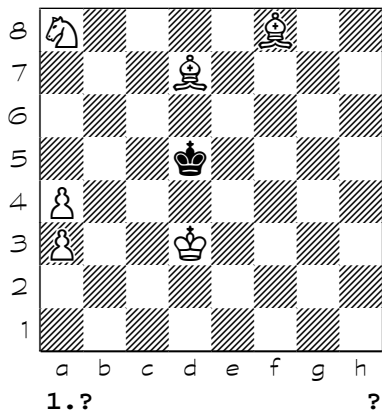
1021



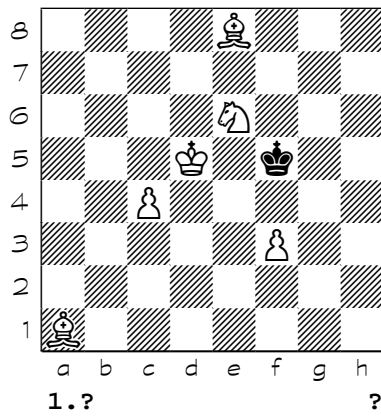
1022



1023

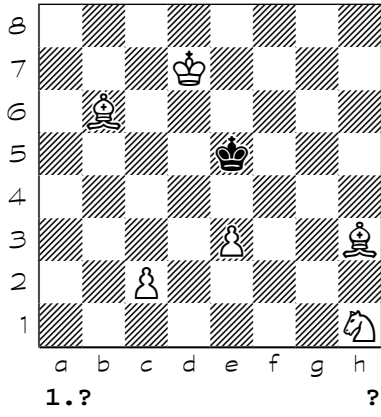


1024

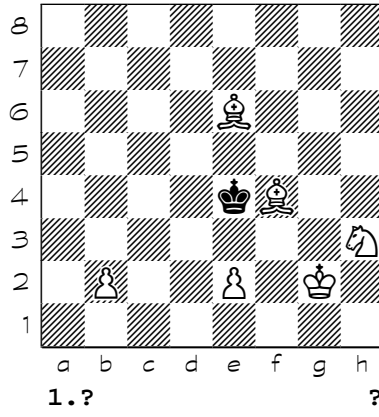


Chess diagrams

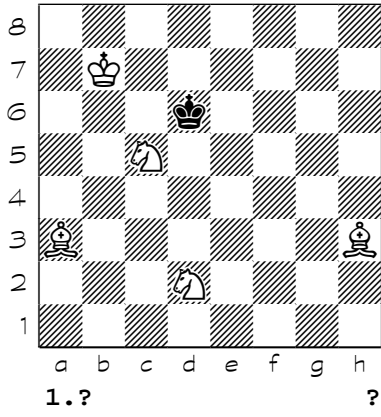
1025



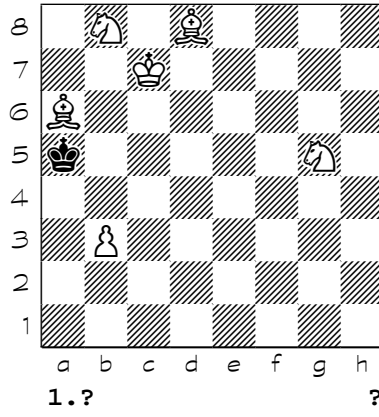
1026



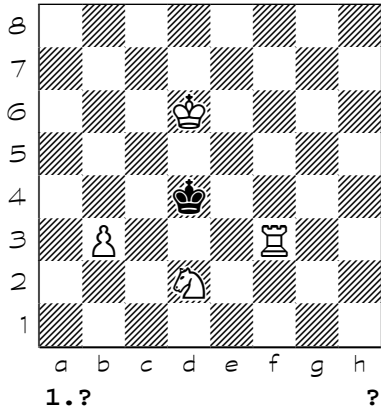
1027



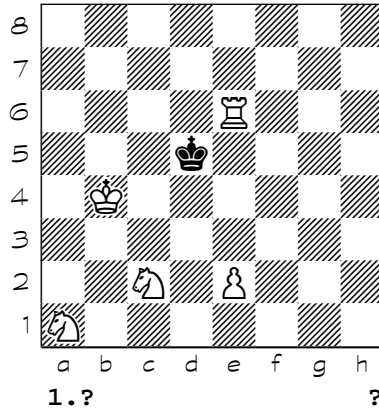
1028



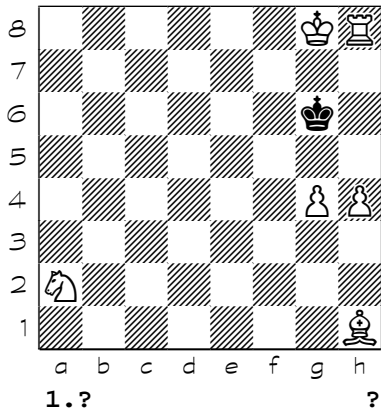
1029



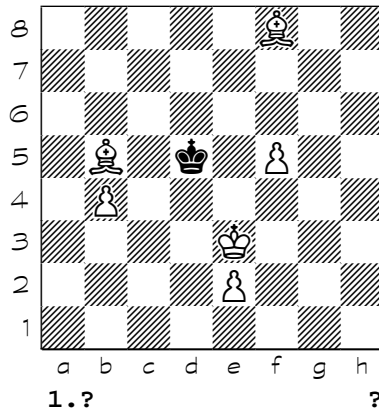
1030



1031

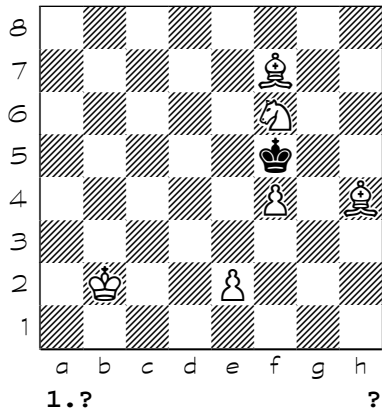


1032

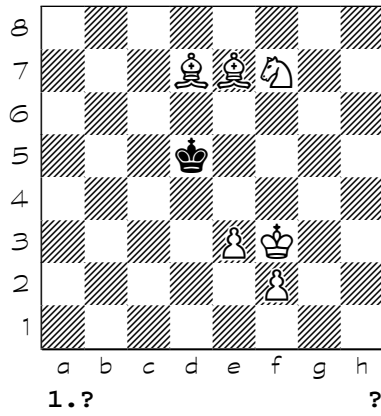


Chess diagrams

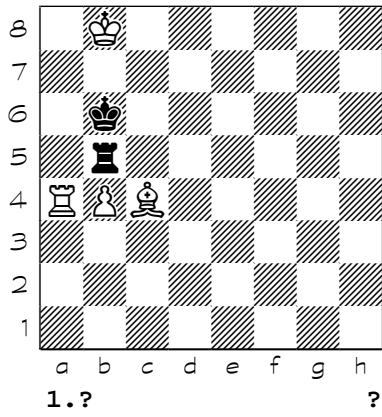
1033



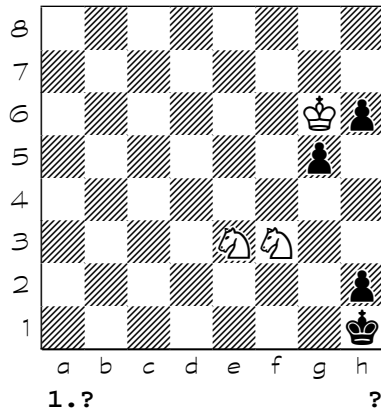
1034



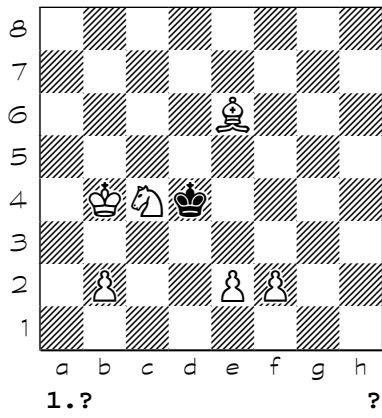
1035



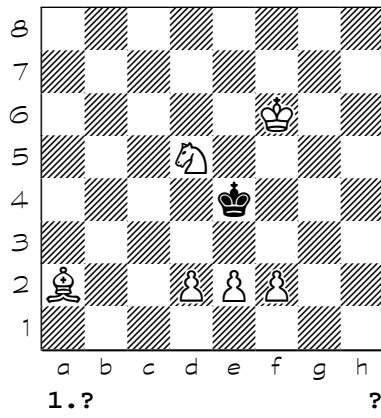
1036



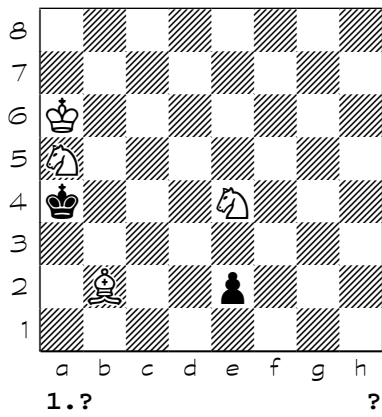
1037



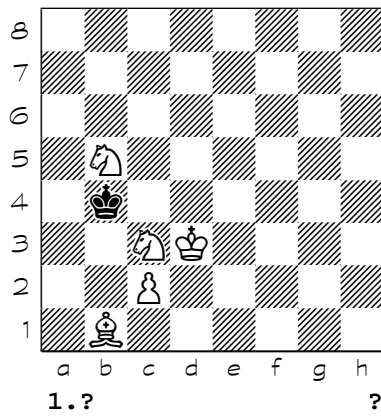
1038



1039

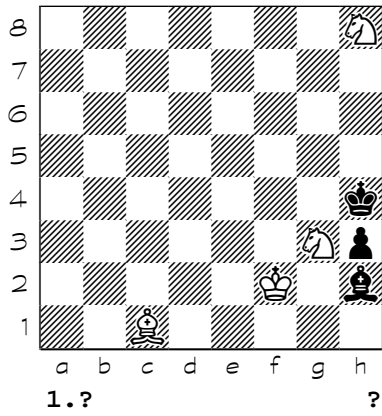


1040

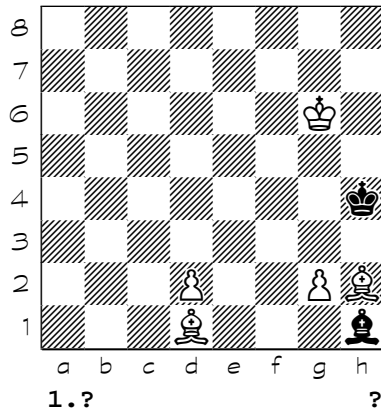


Chess diagrams

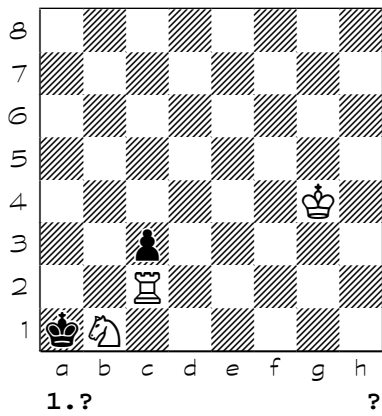
1041



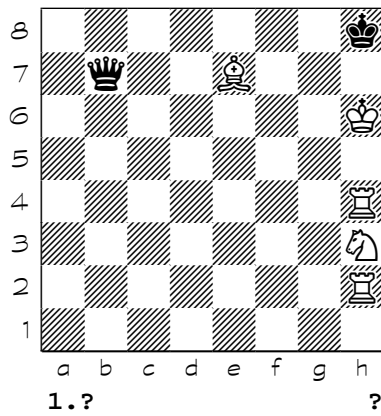
1042



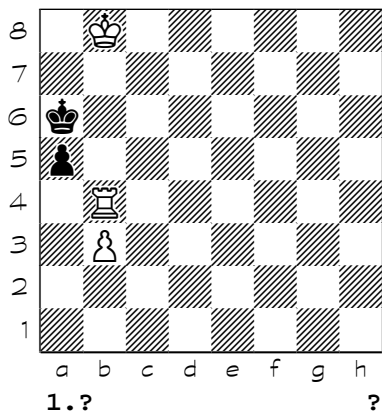
1043



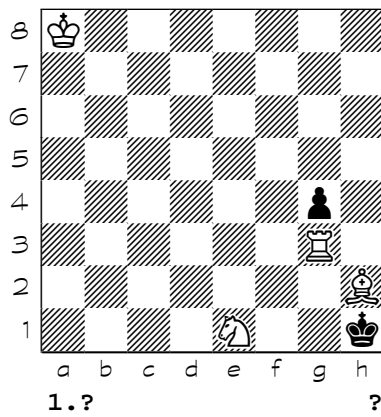
1044



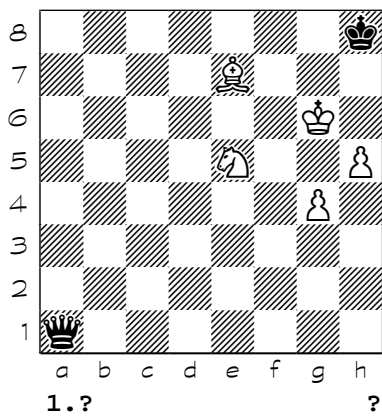
1045



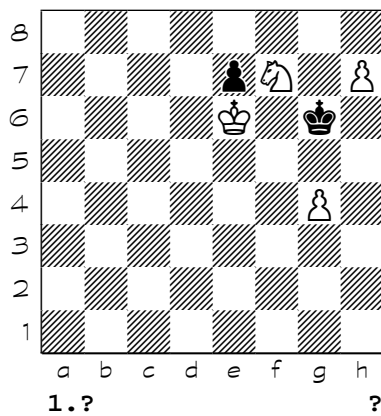
1046



1047

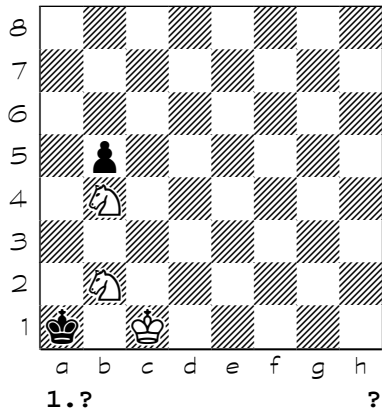


1048

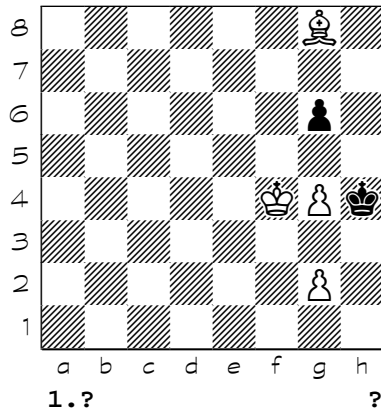


Chess diagrams

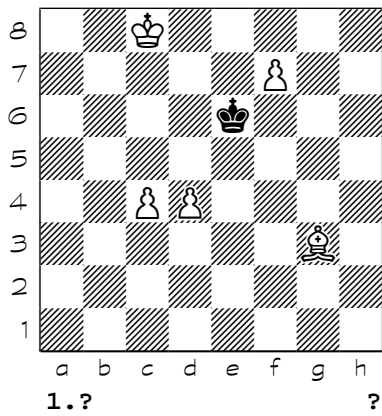
1049



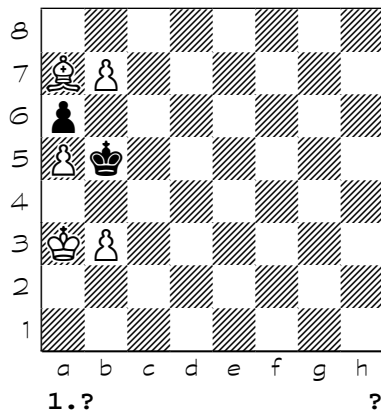
1050



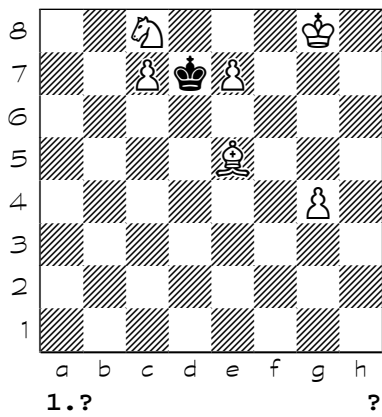
1051



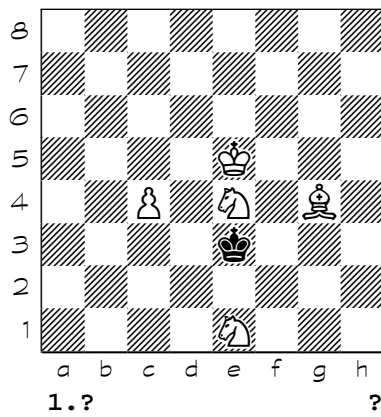
1052



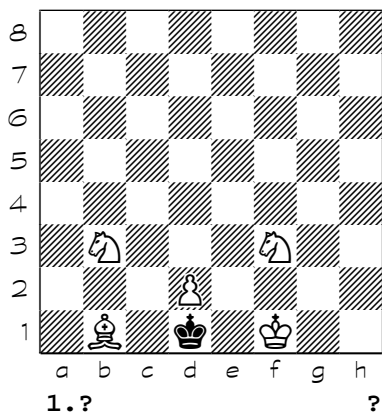
1053



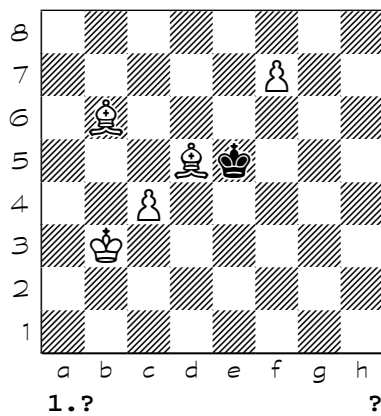
1054



1055

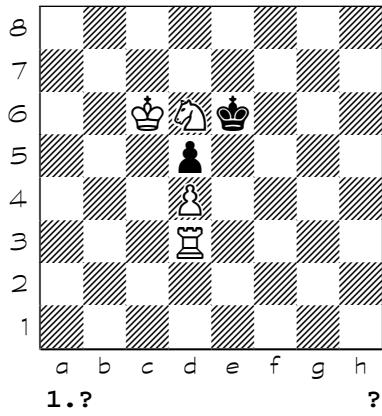


1056

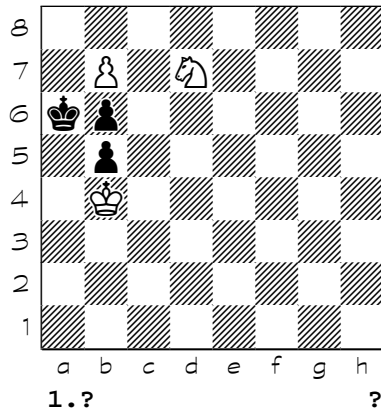


Chess diagrams

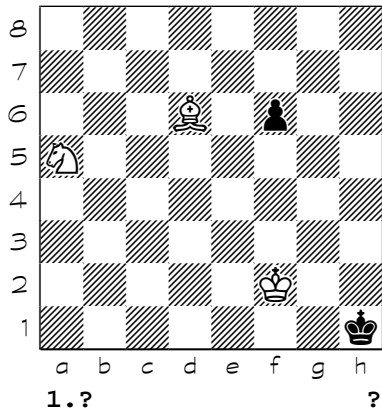
1057



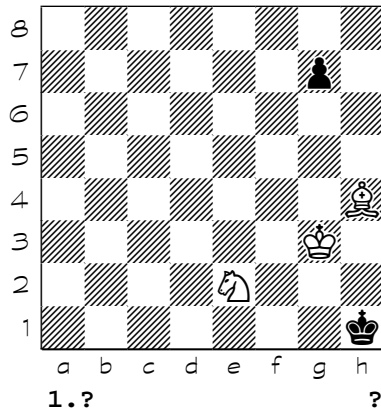
1058



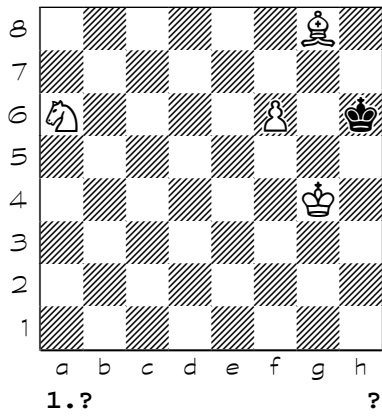
1059



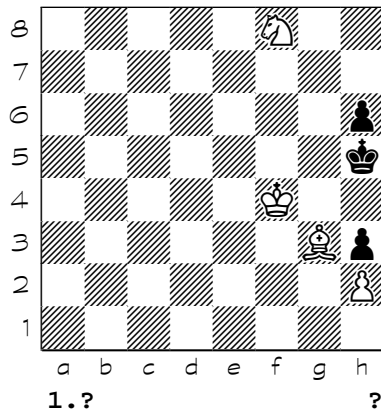
1060



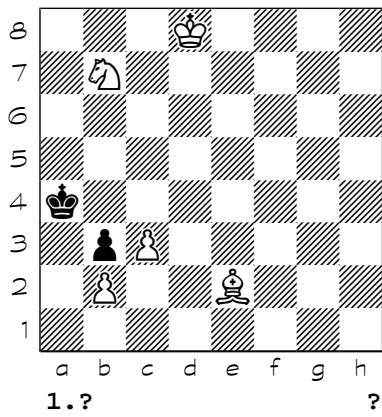
1061



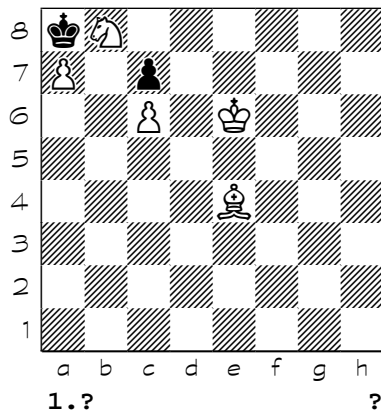
1062



1063

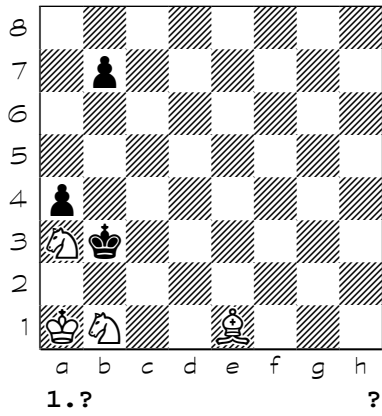


1064

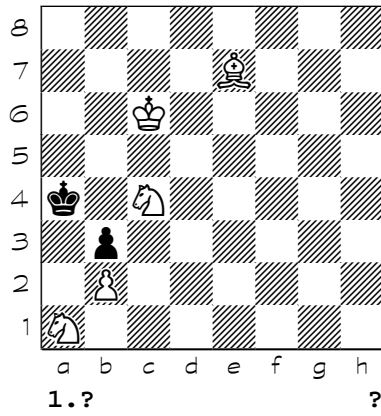


Chess diagrams

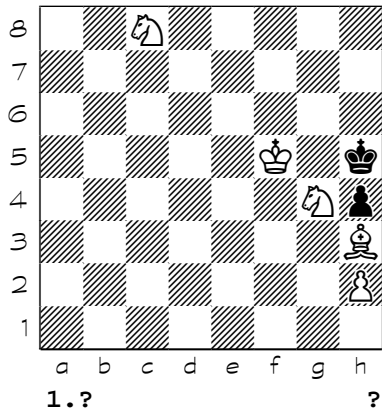
1065



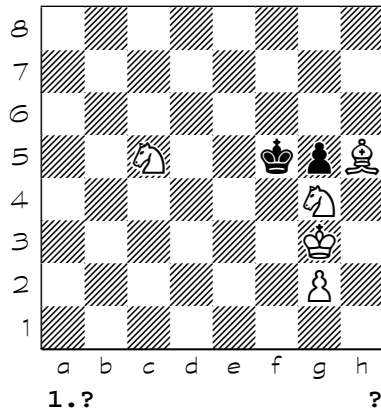
1066



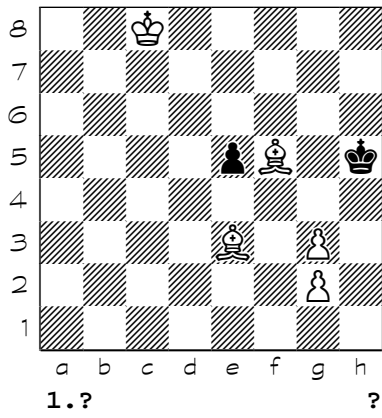
1067



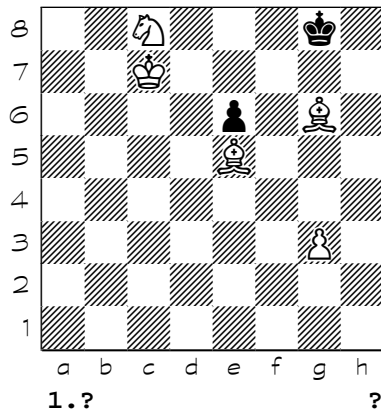
1068



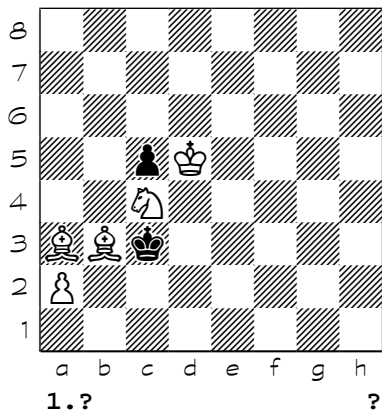
1069



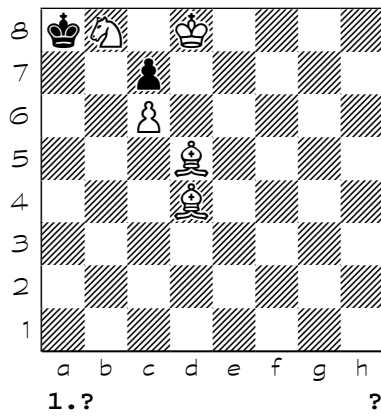
1070



1071

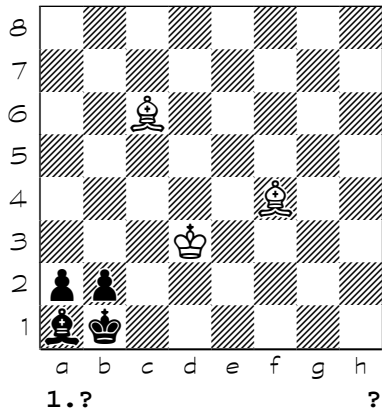


1072

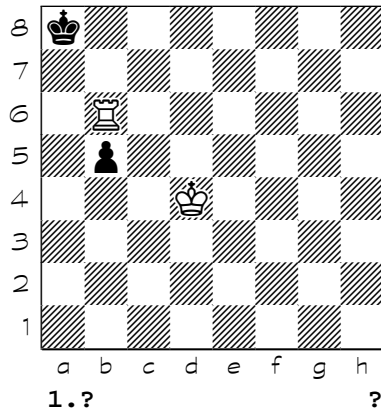


Chess diagrams

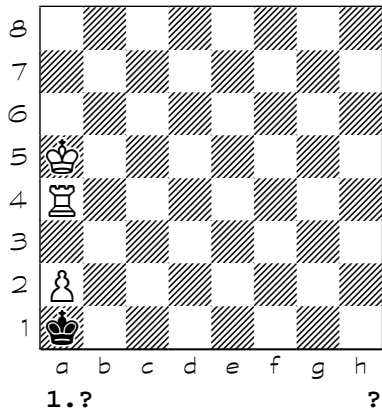
1073



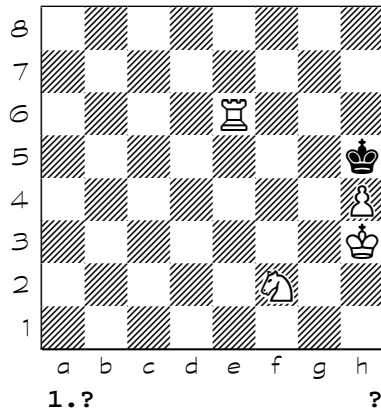
1074



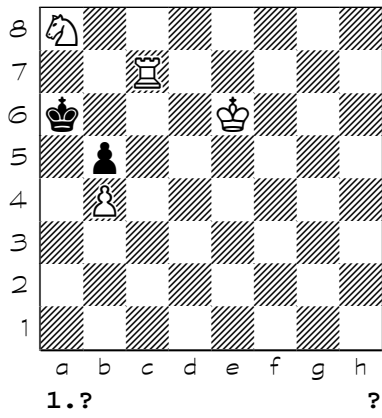
1075



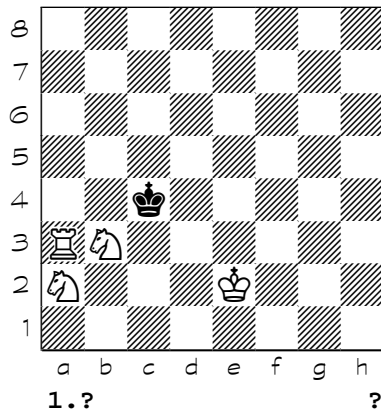
1076



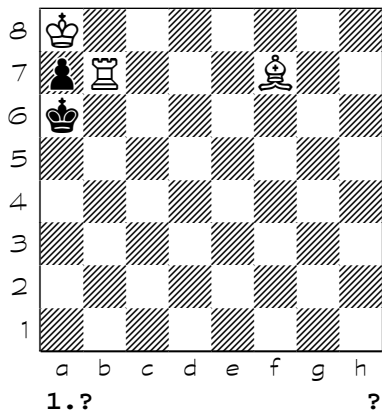
1077



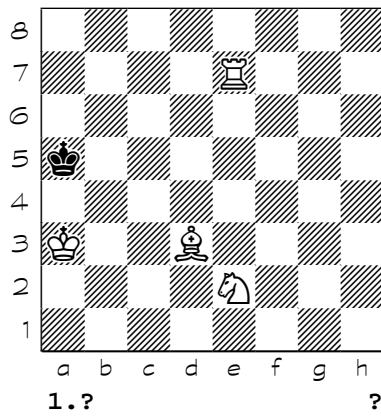
1078



1079

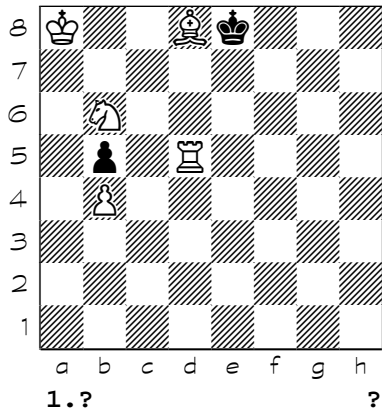


1080

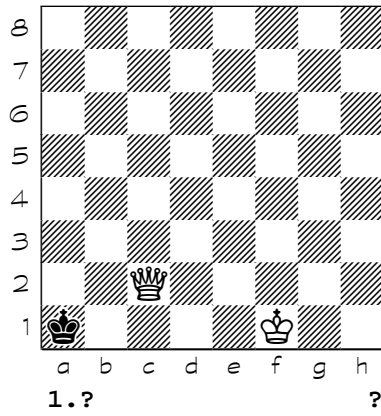


Chess diagrams

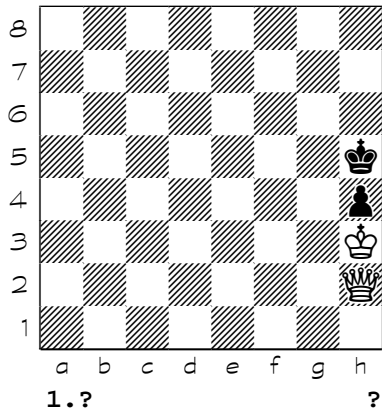
1081



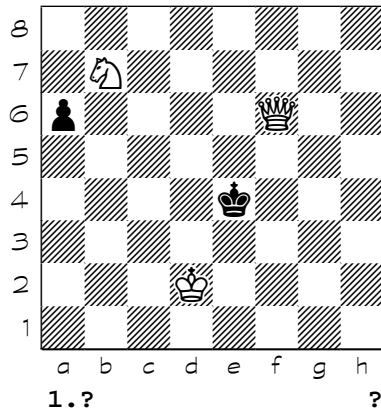
1082



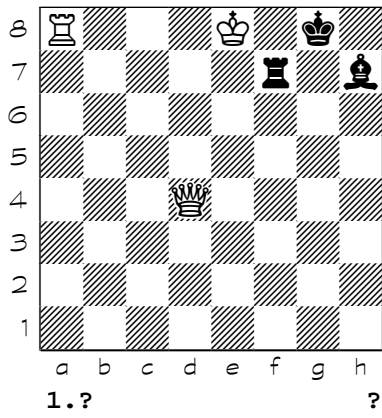
1083



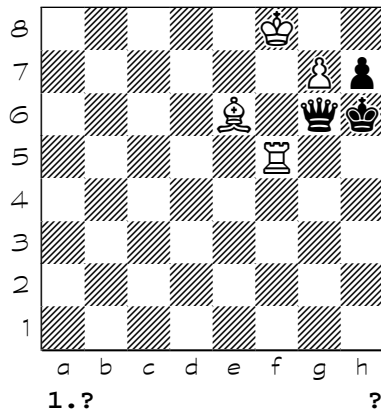
1084



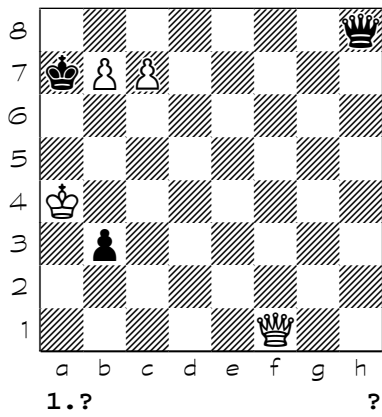
1085



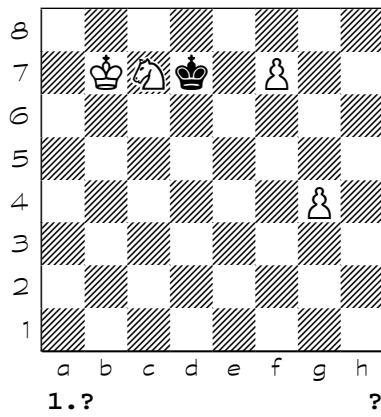
1086



1087

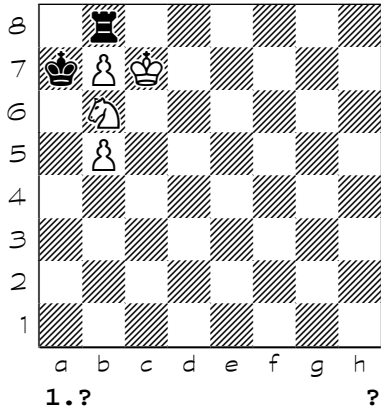


1088

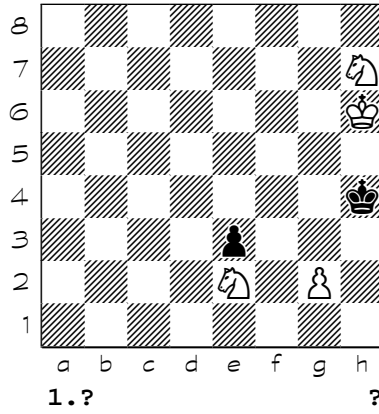


Chess diagrams

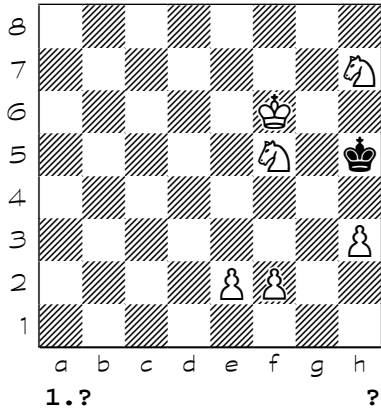
1089



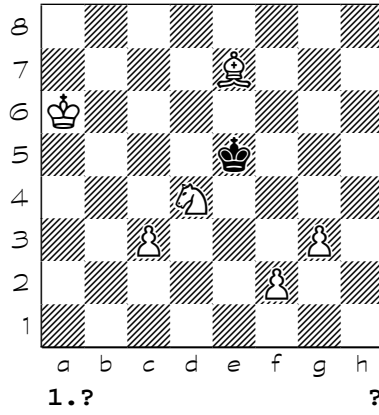
1090



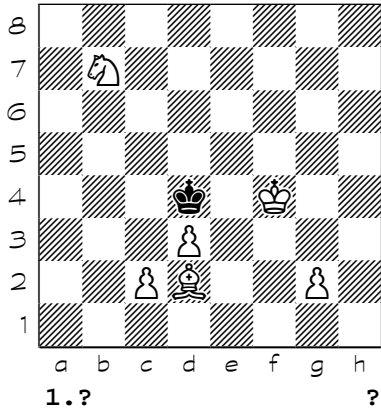
1091



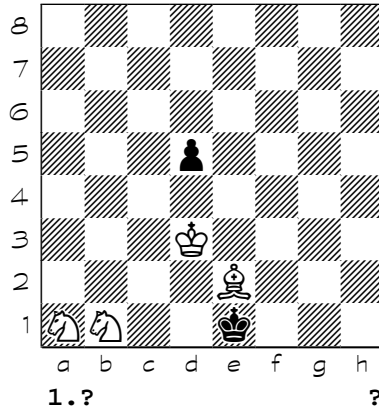
1092



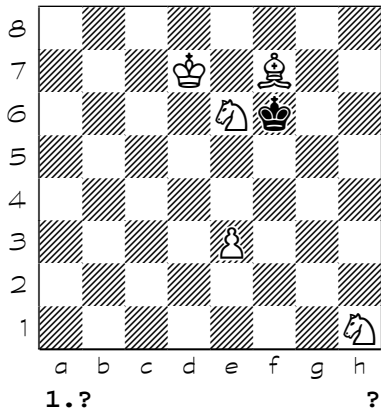
1093



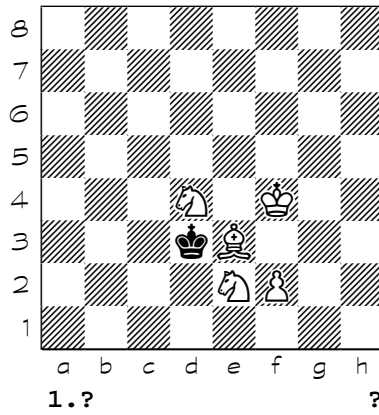
1094



1095

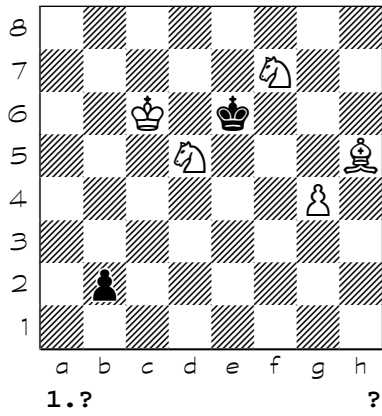


1096

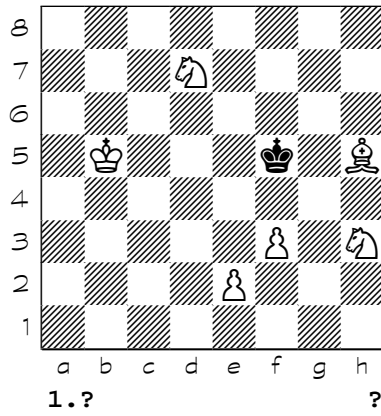


Chess diagrams

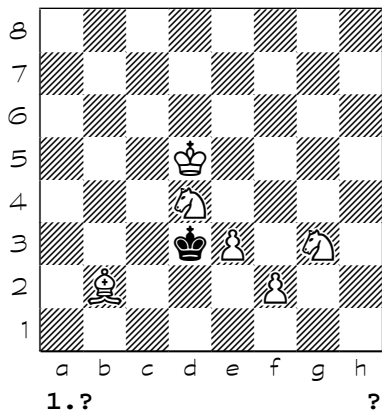
1097



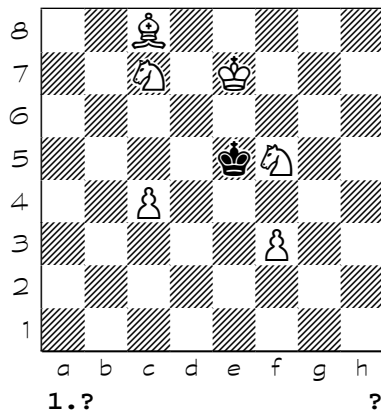
1098



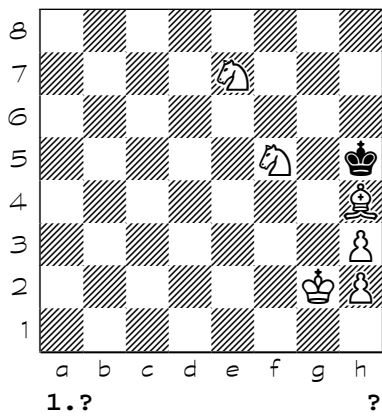
1099



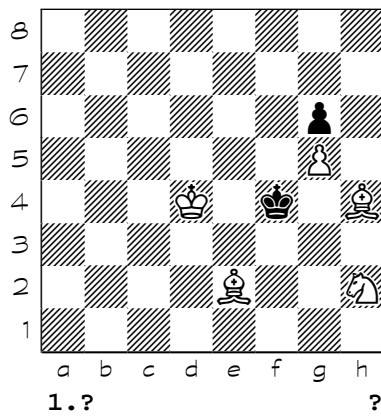
1100



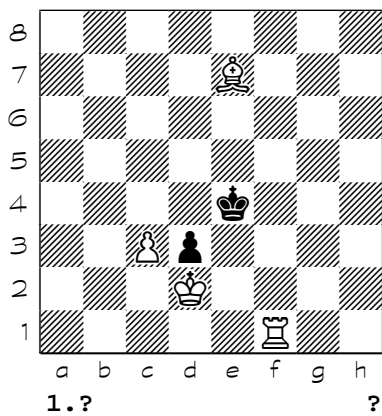
1101



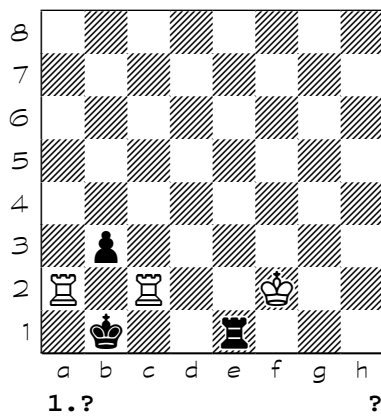
1102



1103

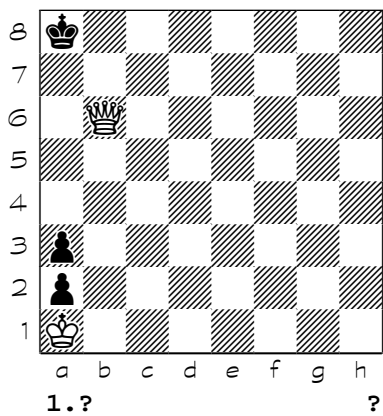


1104

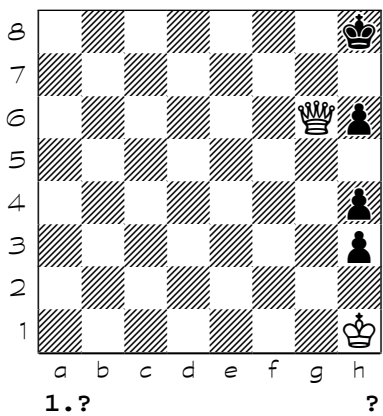


Chess diagrams

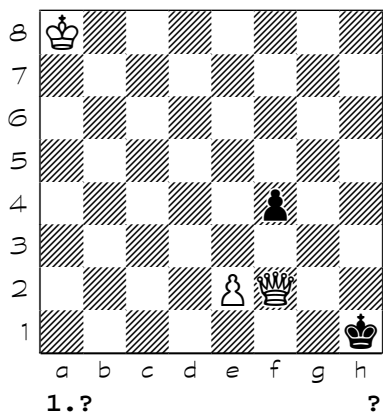
1105



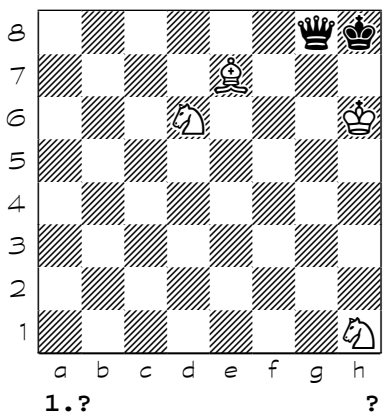
1106



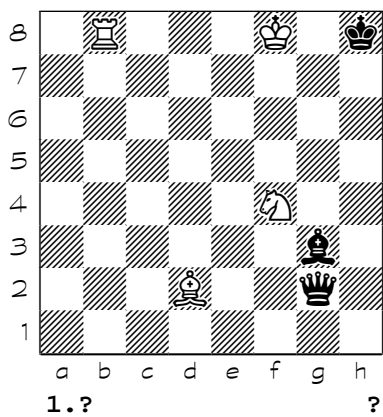
1107



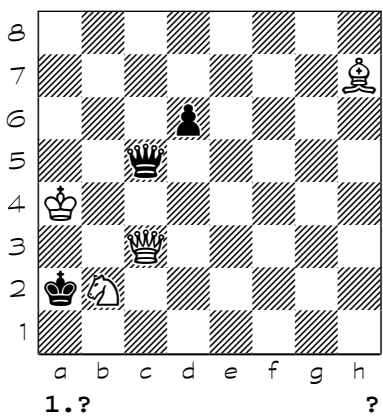
1108



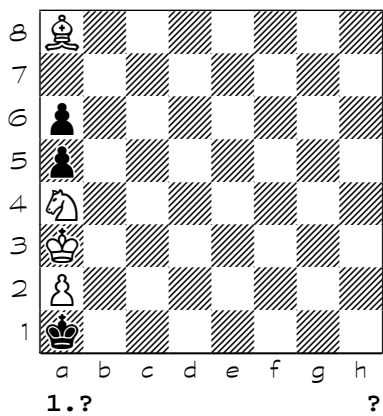
1109



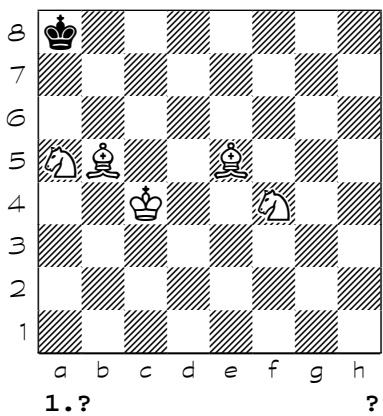
1110



1111

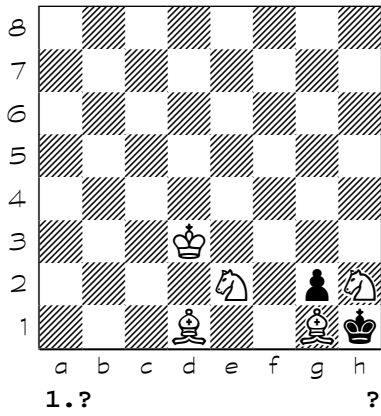


1112

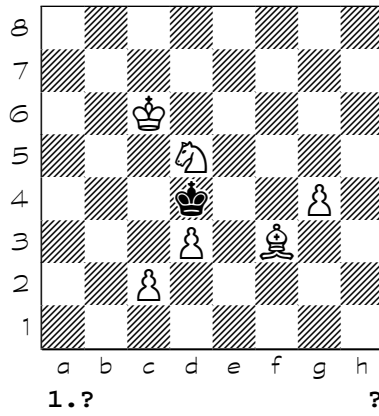


Chess diagrams

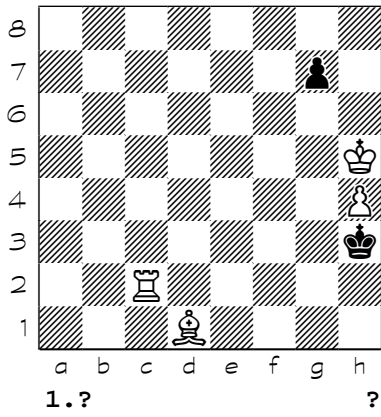
1113



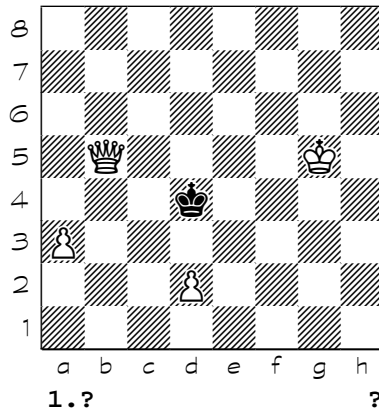
1114



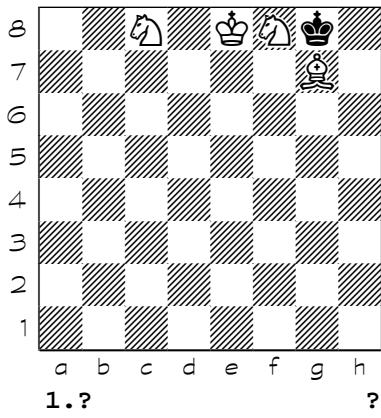
1115



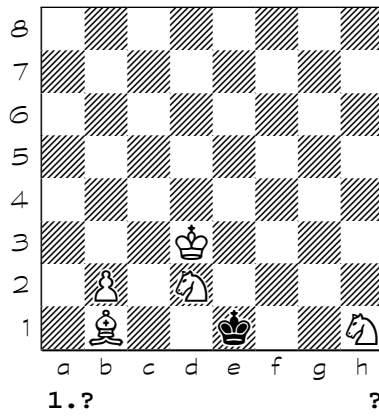
1116



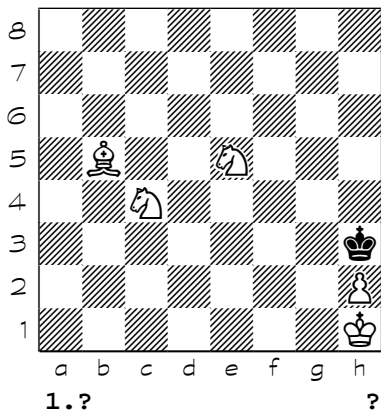
1117



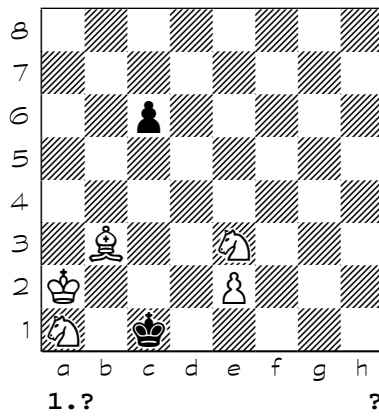
1118



1119

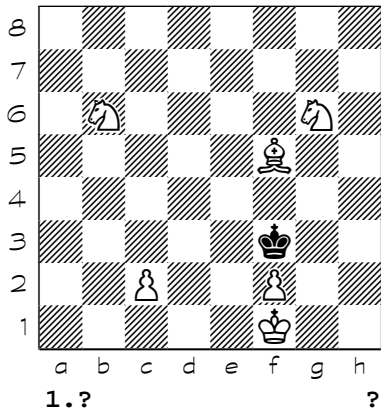


1120

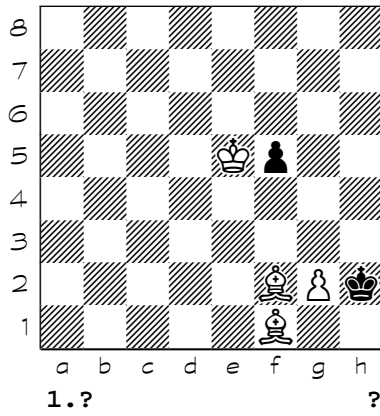


Chess diagrams

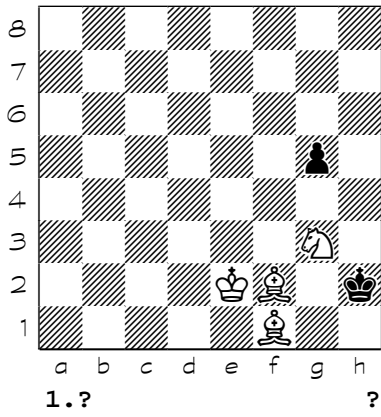
1121



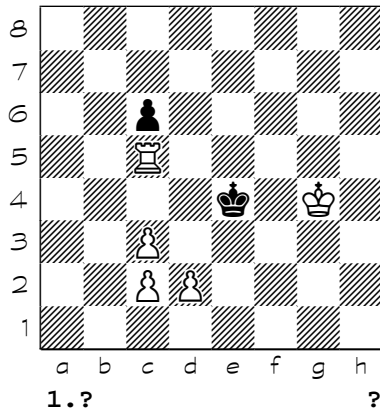
1122



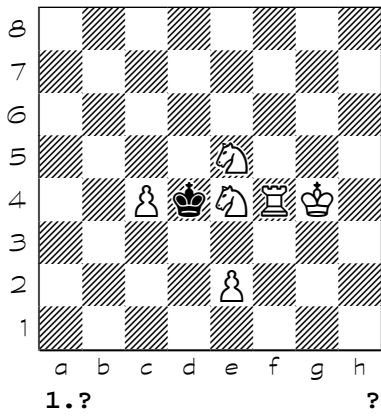
1123



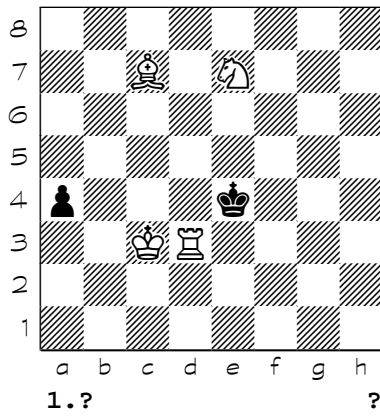
1124



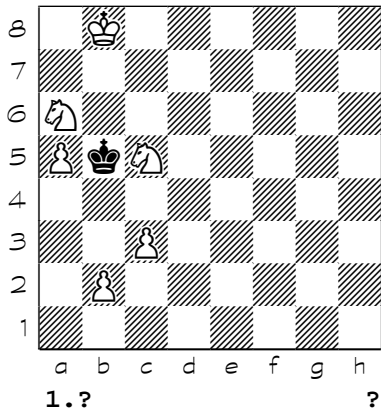
1125



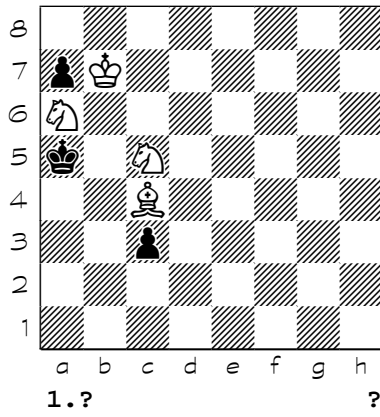
1126



1127

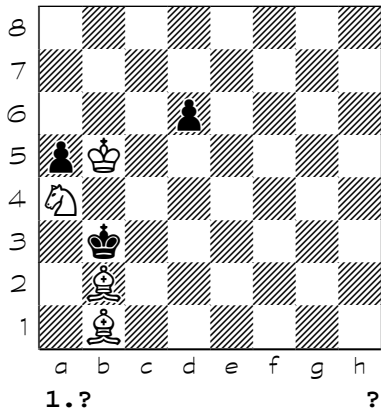


1128

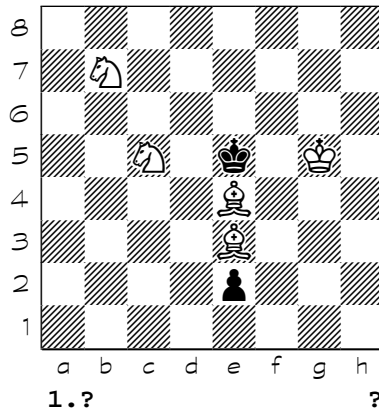


Chess diagrams

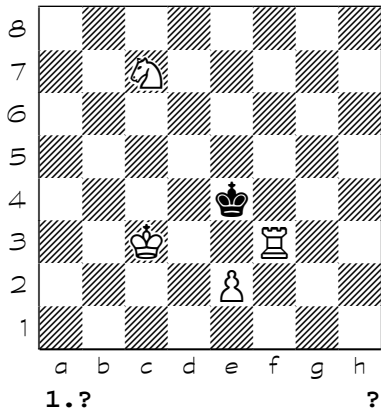
1129



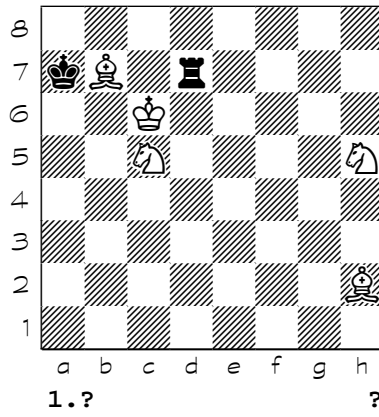
1130



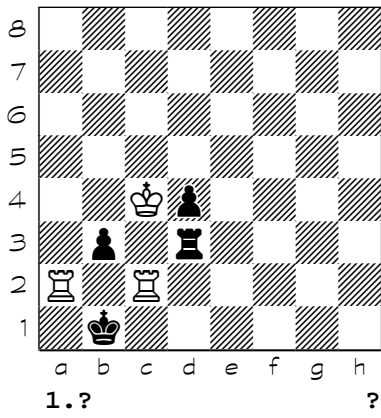
1131



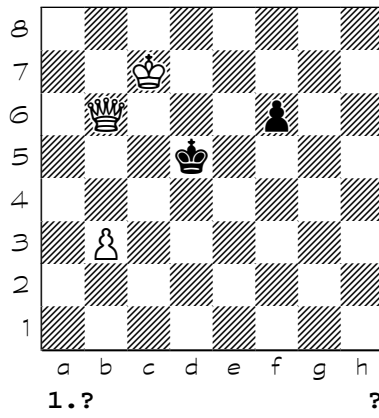
1132



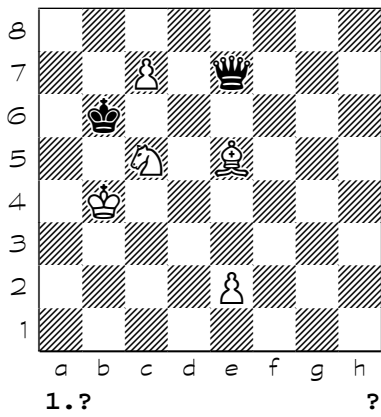
1133



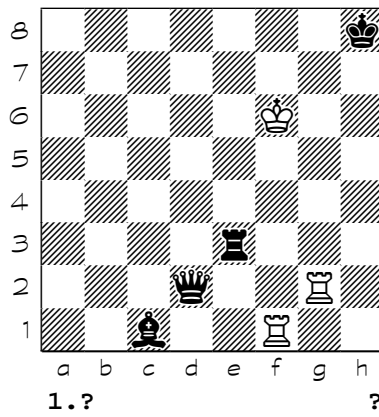
1134



1135

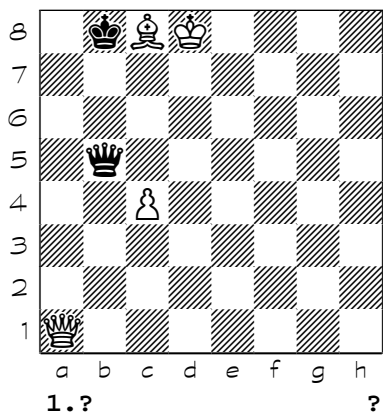


1136

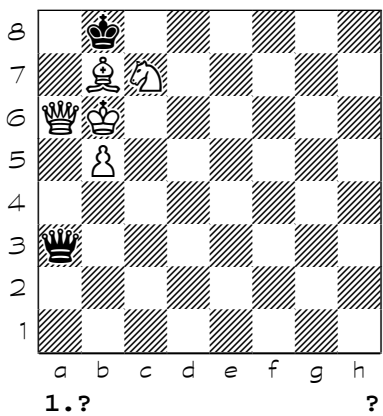


Chess diagrams

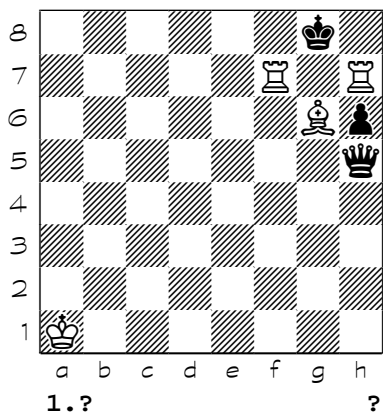
1137



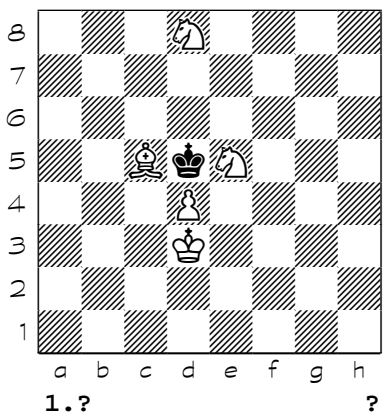
1138



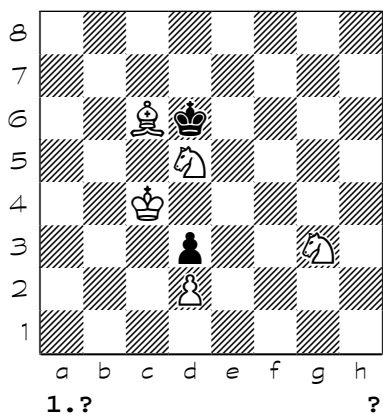
1139



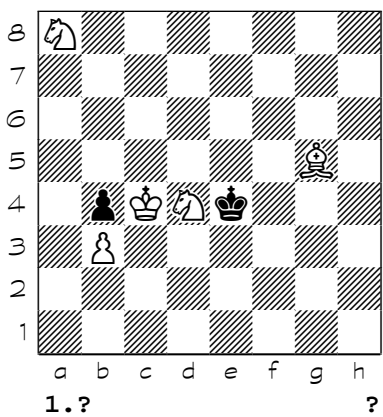
1140



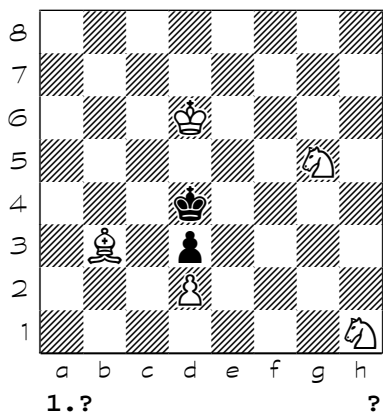
1141



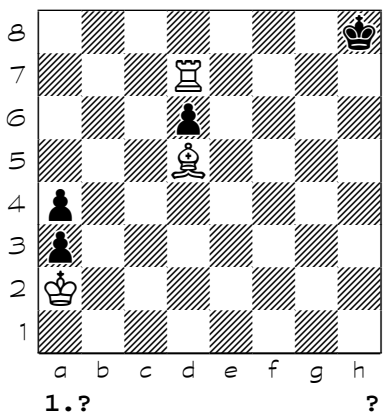
1142



1143

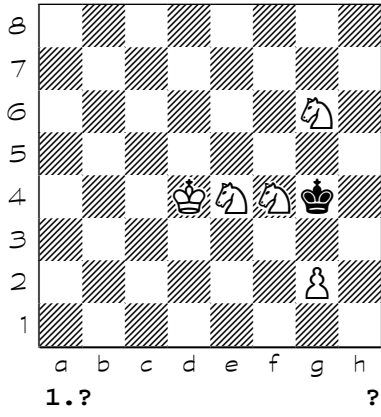


1144

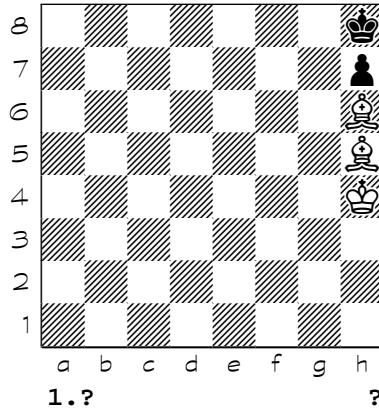


Chess diagrams

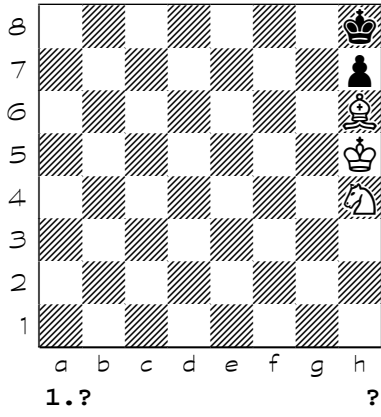
1145



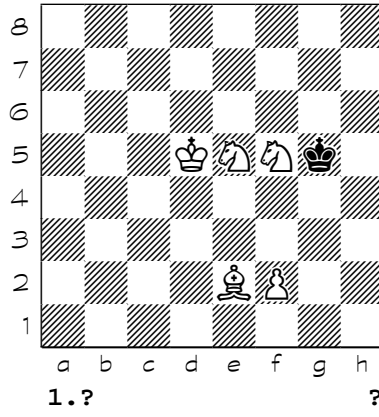
1146



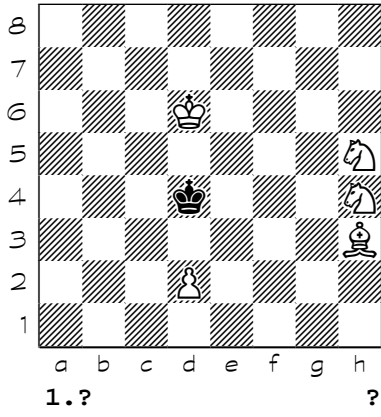
1147



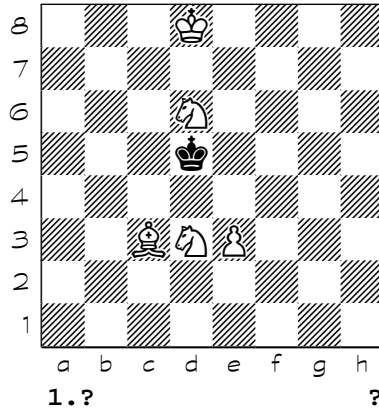
1148



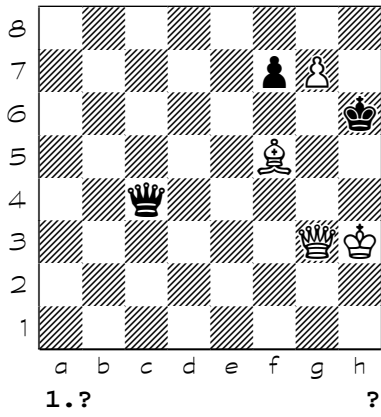
1149



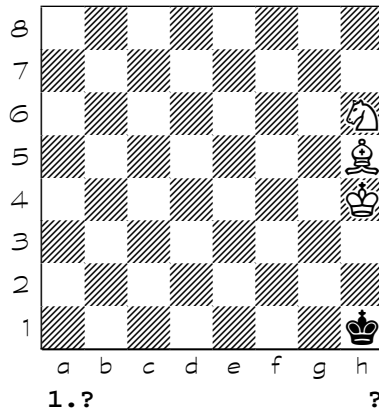
1150



1151

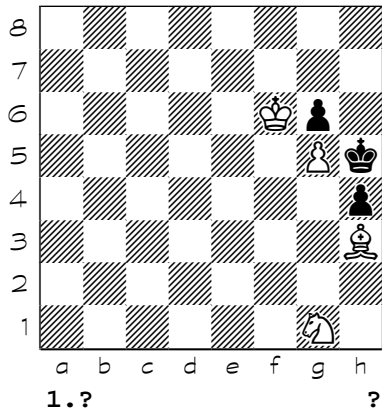


1152

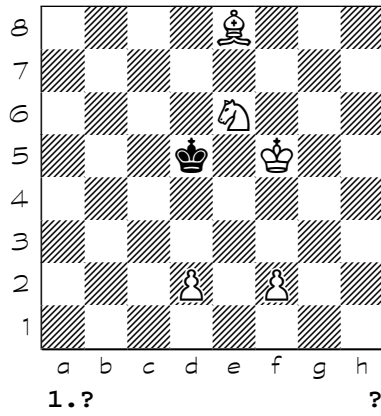


Chess diagrams

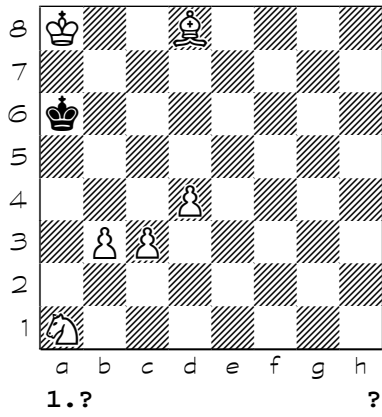
1153



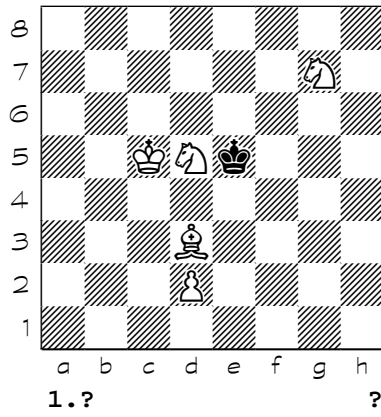
1154



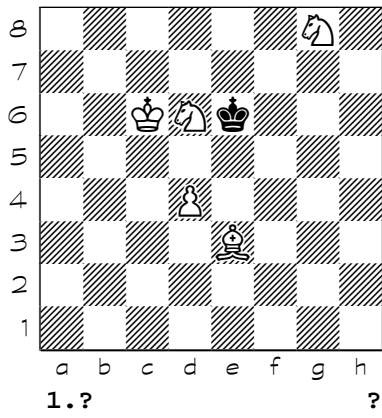
1155



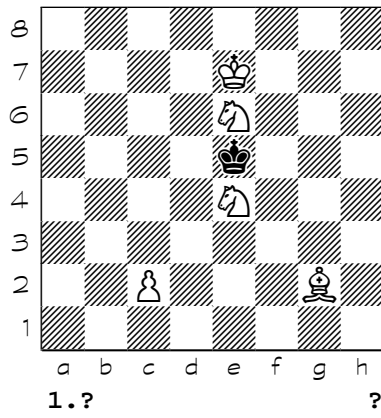
1156



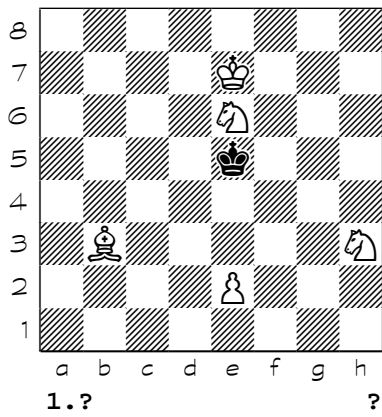
1157



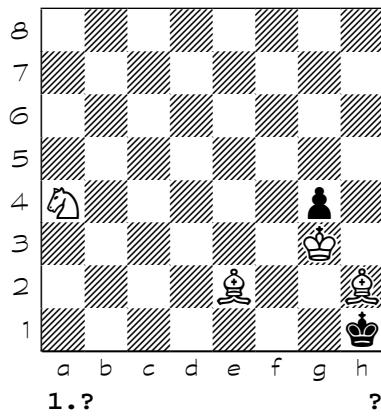
1158



1159

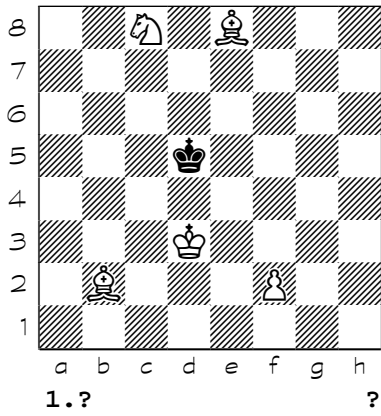


1160

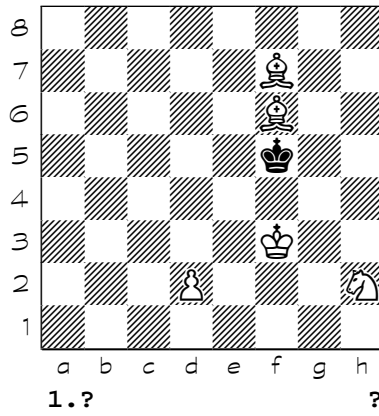


Chess diagrams

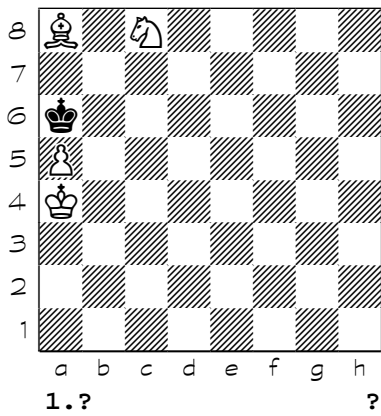
1161



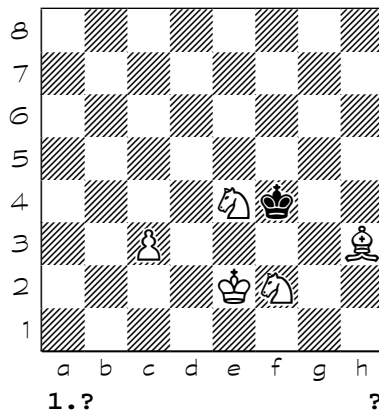
1162



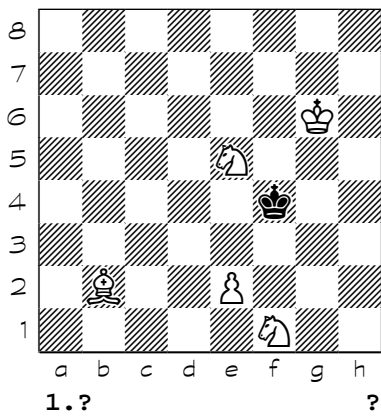
1163



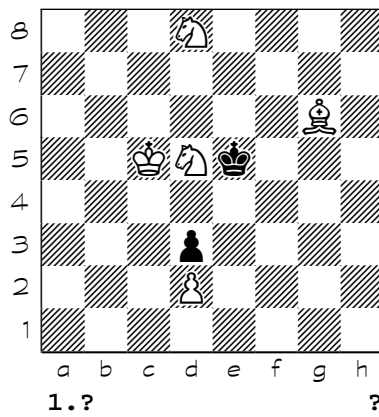
1164



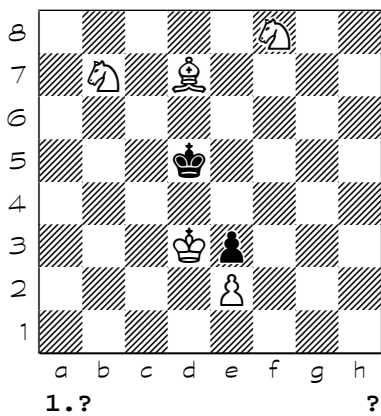
1165



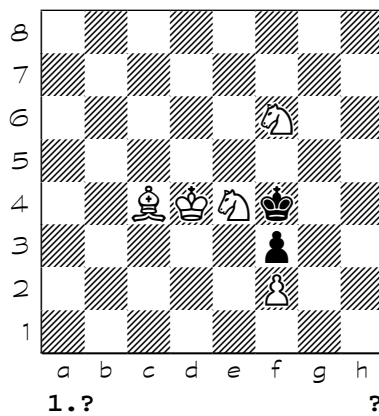
1166



1167

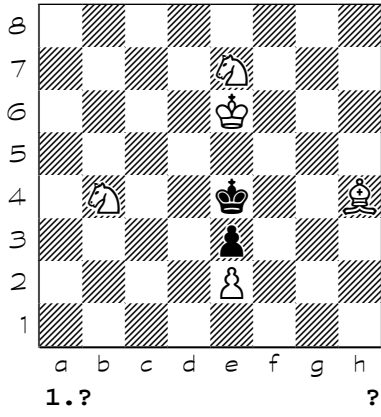


1168

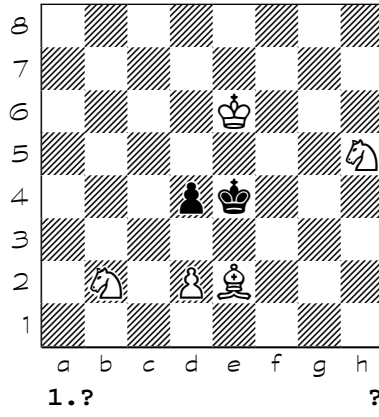


Chess diagrams

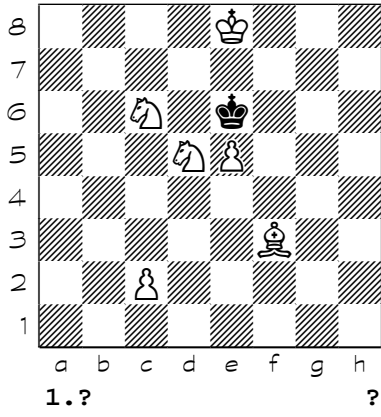
1169



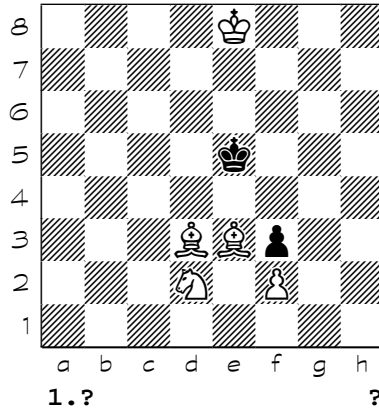
1170



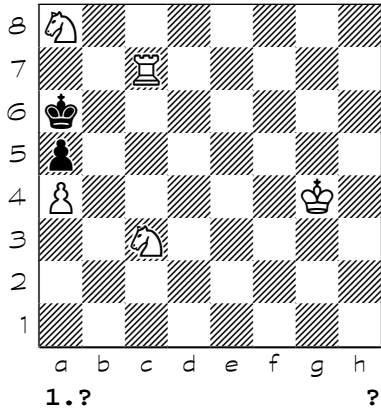
1171



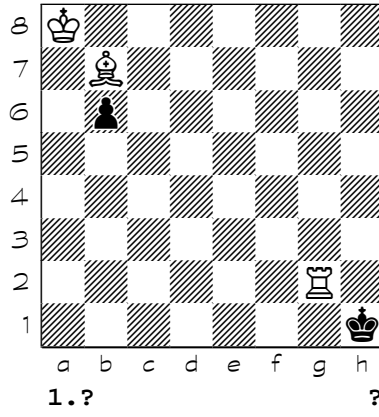
1172



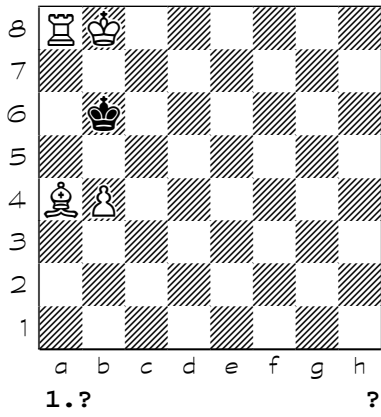
1173



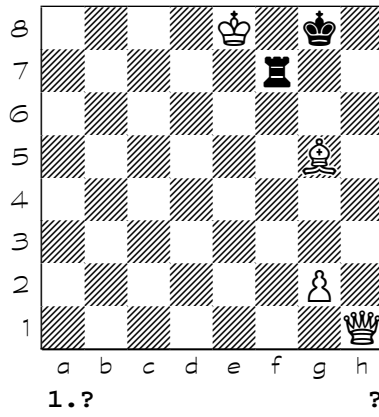
1174



1175

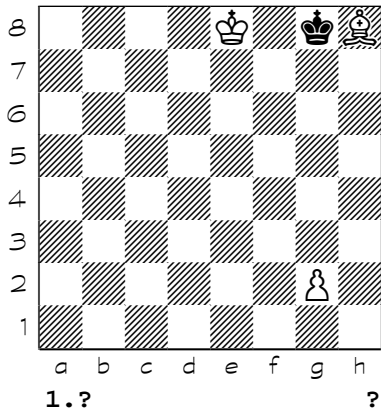


1176

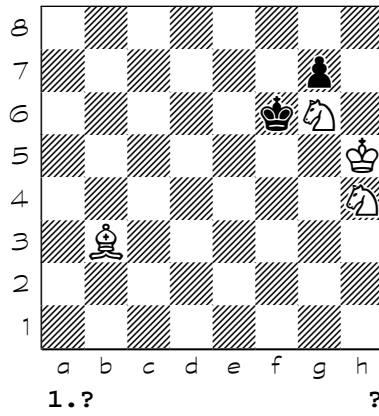


Chess diagrams

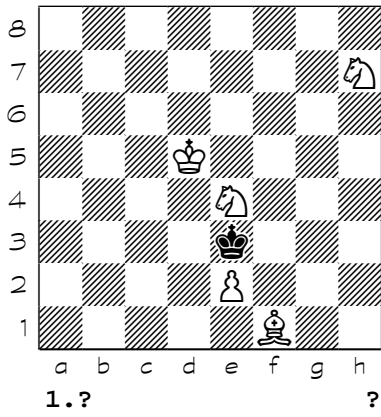
1177



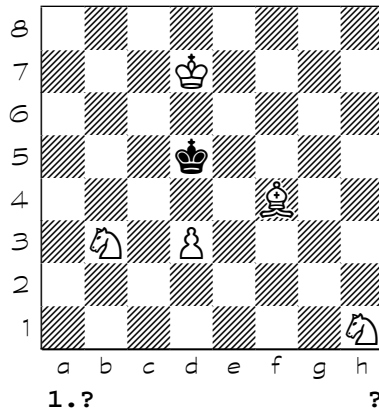
1178



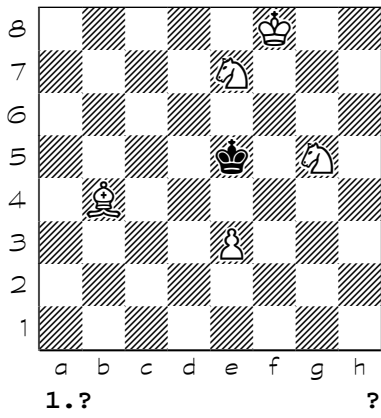
1179



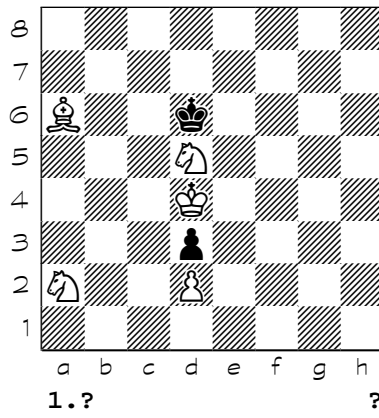
1180



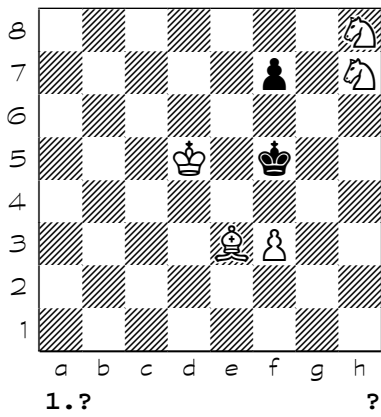
1181



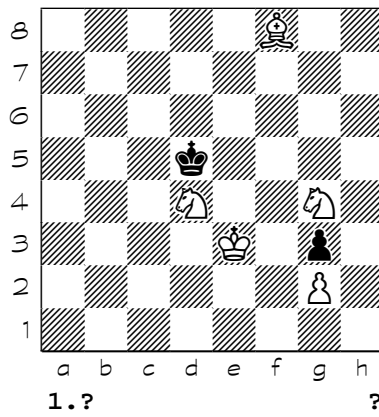
1182



1183

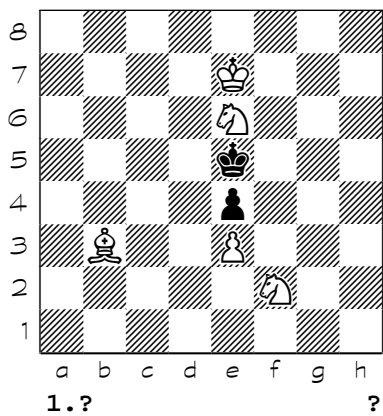


1184

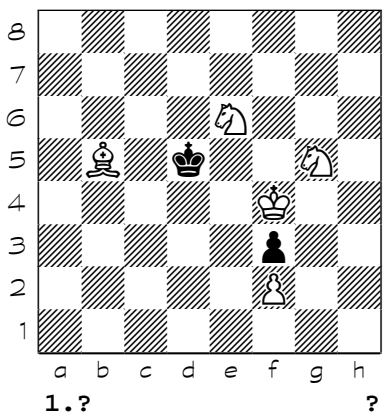


Chess diagrams

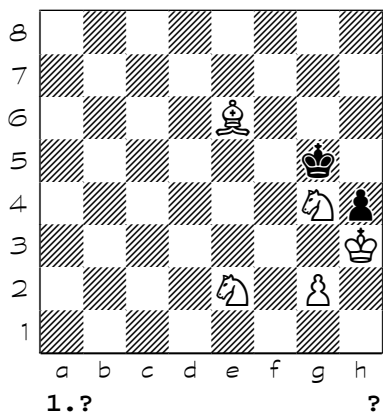
1185



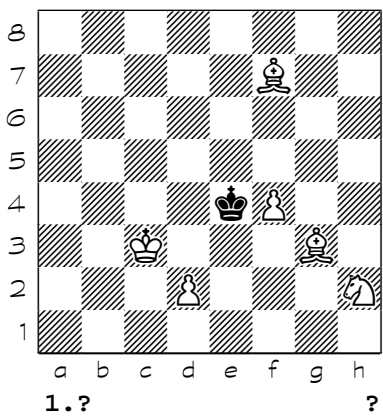
1186



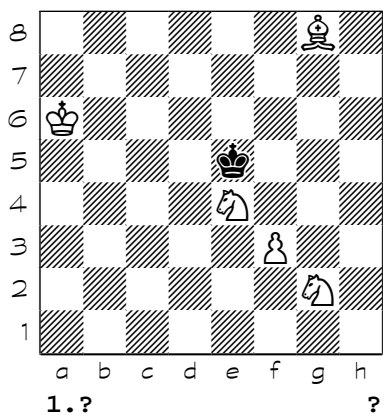
1187



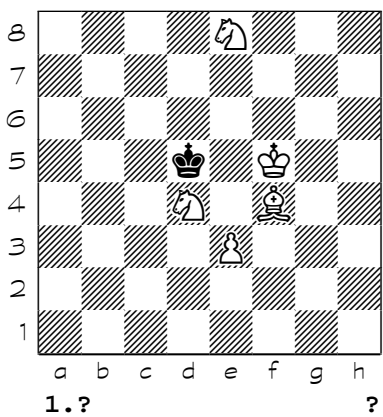
1188



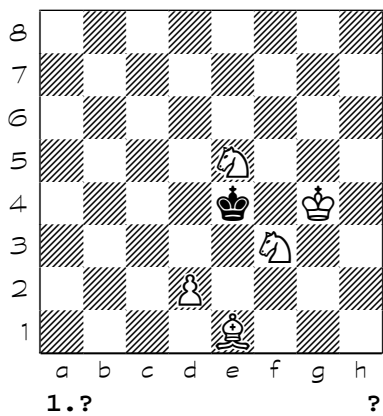
1189



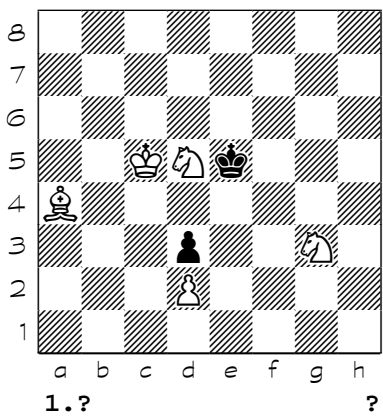
1190



1191

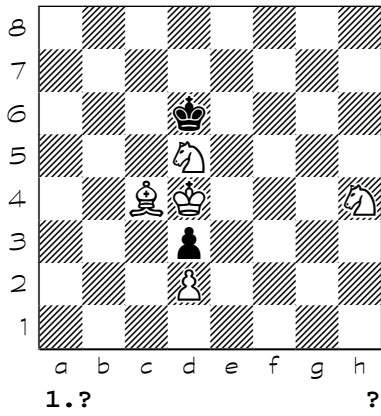


1192

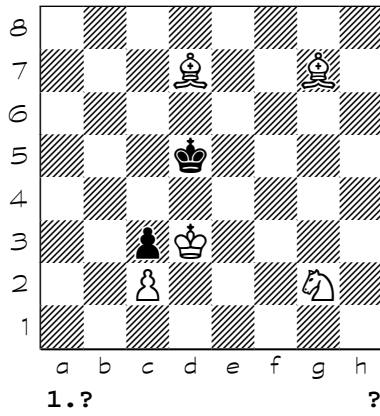


Chess diagrams

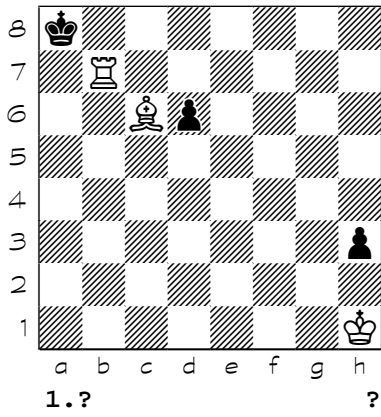
1193



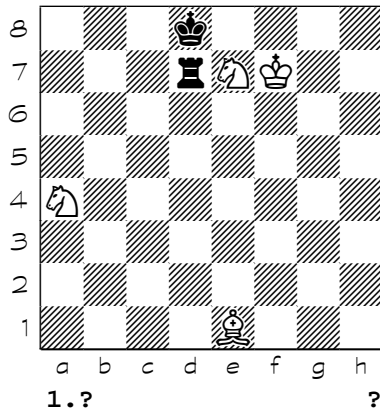
1194



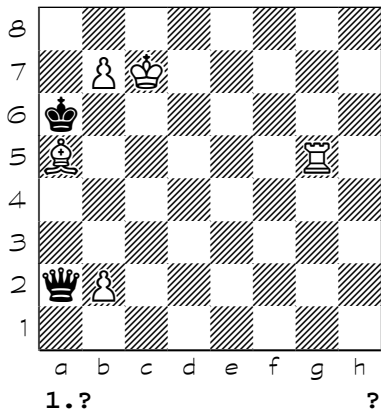
1195



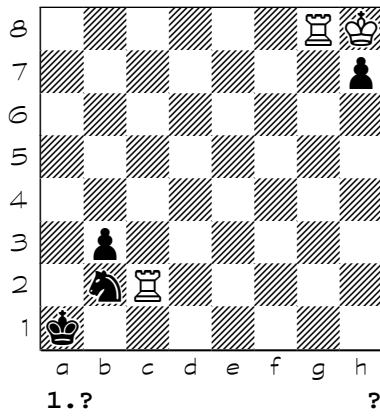
1196



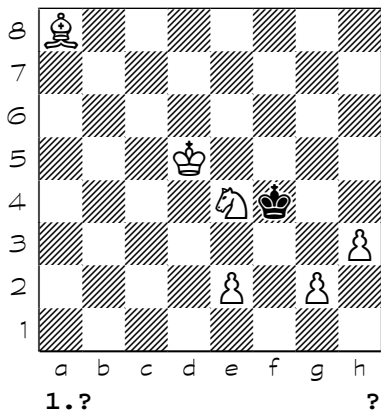
1197



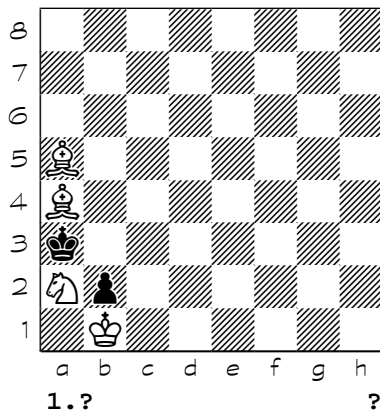
1198



1199



1200



- (1001) 1. Bd7 Kd5 2. Kd3 Ke5 3. Ne2 Kd5 4. Nf4+ Ke5 5. Ng6+ Kd5 6. c4#
- (1002) 1. Bc8 Kxb6 2. Kb4 Ka7 3. Kc5 Ka8 4. Kc6 Ka7 5. b6+ Ka8 6. Bb7#
- (1003) 1. Ba4 Ke5 2. Kc5 Ke6 3. Be8 Ke5 4. Bd7 Ke4 5. Bf5+ Ke5 6. f4#
- (1004) 1. Nce7 Ke5 2. Bf5 Kd6 3. g4 Ke5 4. Nc6+ Kd6 5. Nd8 Ke5 6. Nf7#
- (1005) 1. Kd7 Kd5 2. Bd3 Ke5 3. e3 Kd5 4. Nf6+ Ke5 5. Ng4+ Kd5 6. e4#
- (1006) 1. Ng6 Kd5 2. Ng7 Kc5 3. Ne6+ Kd5 4. Nef8 Kc5 5. Nd7+ Kd5 6. Nf4#
- (1007) 1. Be6 Ke4 2. Nd5 Kd4 3. Nf4 Ke4 4. Nh3 Kd4 5. e3+ Ke4 6. Ng5#
- (1008) 1. Nf1 Ke5 2. Ng3 Kd5 3. Nf5 Ke5 4. Nh4 Kd5 5. e4+ Ke5 6. Ng6#
- (1009) 1. Bc2 Kc4 2. Kc6 Kd4 3. Nf3+ Kc4 4. Nd2+ Kd4 5. Bf5 Ke5 6. Nf3#
- (1010) 1. Bf7 Kf5 2. Kf3 Ke5 3. Nb4 Kf5 4. g4+ Ke5 5. Nc6#
- (1011) 1. Kf5 Kc5 2. Ke4 Kd6 3. Be8 Ke6 4. Nc6 Kd6 5. Nd8 Kc5 6. Nb7#
- (1012) 1. Kc3 Ke5 2. Be7 Kd5 3. Kd3 Ke5 4. Nc6+ Kd5 5. Nb4+ Ke5 6. f4#
- (1013) 1. Nf2 Kxc5 2. Kc7 Kd5 3. Kd7 Kc5 4. Be3+ Kd5 5. c4+ Ke5 6. Ng4#
- (1014) 1. Nc4 Kd5 2. Na7 Ke4 3. Kc3 Kd5 4. Bf5 Kc5 5. b4+ Kd5 6. e4#
- (1015) 1. Bb3 Ke4 2. Bd1 Kd4 3. Be2 Ke4 4. Kc6 Kd4 5. Nc2+ Ke4 6. d3#
- (1016) 1. Bd7 Kd5 2. Bb5 Ke5 3. Bd3 Kd5 4. Kd7 Ke5 5. Ng4+ Kd5 6. c4#
- (1017) 1. Ne5 Kxe5 2. Bf7 Kd4 3. Ke2 Ke5 4. Ke3 Kf5 5. g4+ Ke5 6. f4#
- (1018) 1. Be6 Ke4 2. Bg4 Kd4 3. Be2 Ke4 4. g4 Kd4 5. c3+ Ke4 6. d3#
- (1019) 1. Be2 Kxd4 2. Kd6 Ke4 3. Ke6 Kd4 4. Bb6+ Ke4 5. d3+ Kf4 6. Be3#
- (1020) 1. Bg5 Ke5 2. Kc5 Ke6 3. Be8 Ke5 4. Bd7 Ke4 5. Bf5+ Ke5 6. d4#
- (1021) 1. Kb5 Kd5 2. Kb4 Ke5 3. Kc3 Kd5 4. Kd3 Ke5 5. Ng4+ Kd5 6. e4#
- (1022) 1. Kg4 Kd4 2. Bb3 Ke4 3. Bc5 Ke5 4. Kg5 Ke4 5. Bd5+ Ke5 6. d4#
- (1023) 1. Be7 Ke5 2. Ke3 Kd5 3. Nb6+ Ke5 4. Nc4+ Kd5 5. Bb4 Kxc4 6. Be6#
- (1024) 1. Bf6 Kxf6 2. Kd6 Kf5 3. Ke7 Ke5 4. Ba4 Kf5 5. Bc2+ Ke5 6. f4#
- (1025) 1. Bd4+ Kd5 2. Be6+ Ke4 3. Bg4 Kd5 4. Be2 Ke4 5. Ng3+ Kd5 6. c4#
- (1026) 1. Kf2 Kd4 2. Bd6 Ke4 3. Nf4 Kd4 4. Nd3 Ke4 5. Nc5+ Kd4 6. e3#
- (1027) 1. Nd7+ Kd5 2. Bb2 Kd6 3. Bf6 Kd5 4. Bf5 Kd6 5. Ne4+ Kd5 6. Nb6#
- (1028) 1. Nc6+ Kxa6 2. Be7 Kb5 3. Nb8 Ka5 4. Ne4 Kb5 5. Nc3+ Ka5 6. b4#
- (1029) 1. Nc4 Ke4 2. Ne5 Kd4 3. b4 Ke4 4. Ke6 Kd4 5. Kf5 Kd5 6. Rd3#
- (1030) 1. Nd4 Kxd4 2. Nb3+ Kd5 3. Nc5 Kd4 4. Nd3 Kd5 5. Nf4+ Kd4 6. e3#
- (1031) 1. Rh6+ Kxh6 2. Nc3 Kg6 3. Ne4 Kh6 4. Bf3 Kg6 5. h5+ Kh6 6. g5#
- (1032) 1. Kf4 Kd4 2. Bg7+ Kd5 3. Bf6 Kd6 4. Bd8 Kd5 5. Bc7 Kd4 6. Be5+ Kd5 7. e4#
- (1033) 1. Kc3 Kxf4 2. Kd4 Kf5 3. Ke3 Ke5 4. Ne8 Kf5 5. Kf3 Ke5 6. Bf6+ Kf5 7. e4#
- (1034) 1. Ne5 Kxe5 2. Ke2 Ke4 3. f3+ Ke5 4. Kd2 Kd5 5. Kd3 Ke5 6. f4+ Kd5 7. e4#
- (1035) 1. Ra6+ Kxa6+ 2. Kc7 Ka7 3. Bxb5 Ka8 4. Ba6 Ka7 5. b5 Ka8 6. Bb7+ Ka7 7. b6#
- (1036) 1. Kh5 g4 2. Kxg4 h5+ 3. Kg3 h4+ 4. Kf2 h3 5. Nxx2 Kxh2 6. Ng4+ Kh1 7. Kf1 h2 8. Nf2#
- (1037) 1. Bf5 Kd5 2. Kb5 Kd4 3. f3 Kd5 4. Bd7 Kd4 5. Kb4 Kd5 6. Kc3 Kc5 7. b4+ Kd5 8. e4#
- (1038) 1. Ke6 Kd4 2. Kd6 Ke4 3. Bb1+ Kd4 4. Bc2 Kc4 5. Kc6 Kd4 6. f4 Kc4 7. d3+ Kd4 8. e3#
- (1039) 1. Nc5+ Kb4 2. Nd3+ Ka4 3. Kb6 e1=Q 4. Nxe1 Kb4 5. Nd3+ Ka4 6. Nc5+ Kb4 7. Kc6 Kxa5 8. Bc3#
- (1040) 1. Kd4 Ka5 2. Kc5 Ka6 3. Kc6 Ka5 4. Kb7 Kb4 5. Kb6 Kc4 6. Ba2+ Kb4 7. Nd5+ Ka4 8. Bb3#
- (1041) 1. Ng6+ Kg4 2. Ne5+ Kh4 3. Nf5+ Kh5 4. Ng7+ Kh4 5. Nf3+ Kg4 6. Nxx2+ Kh4 7. Kg1 Kg3 8. Nf5#
- (1042) 1. Bf3 Bxg2 2. Bxg2 Kg4 3. d4 Kh4 4. d5 Kg4 5. d6 Kh4 6. d7 Kg4 7. d8=R Kh4 8. Rd4#
- (1043) 1. Nd2 cxd2 2. Rxd2 Kb1 3. Kf3 Kc1 4. Ke2 Kb1 5. Kd1 Ka1 6. Kc2 Ka2 7. Rd3 Ka1 8. Ra3#
- (1044) 1. Kg6+ Kg8 2. Rh8+ Kxh8 3. Ng5+ Kg8 4. Rh8+ Kxh8 5. Nf7+ Kg8 6. Nh6+ Kh8 7. Bf6+ Qg7+ 8. Bxg7#
- (1045) 1. Rb7 a4 2. bxa4 Ka5 3. Ka7 Kxa4 4. Ka6 Ka3 5. Ka5 Ka2 6. Ka4 Ka1 7. Kb3 Kb1 8. Rc7 Ka1 9. Rc1#
- (1046) 1. Nf3 gxf3 2. Bg1 f2 3. Bxf2 Kh2 4. Kb7 Kh1 5. Kc6 Kh2 6. Kd5 Kh1 7. Ke4 Kh2 8. Kf3 Kh1 9. Rh3#
- (1047) 1. Nf7+ Kg8 2. Nh6+ Kh8 3. Bf6+ Qxf6+ 4. Kxf6 Kh7 5. g5 Kh8 6. Kf7 Kh7 7. Kf8 Kh8 8.

Nf7+ Kh7 9. g6#

(1048) 1. h8=R Kg7 2. Kxe7 Kg6 3. Kf8 Kf6 4. Rh6#

(1049) 1. Na4 bxa4 2. Kc2 a3 3. Kc1 a2 4. Nc2#

(1050) 1. g5 Kh5 2. Be6 Kh4 3. g3+ Kh5 4. Bg4#

(1051) 1. f8=R Ke7 2. Bd6+ Kxd6 (2... Ke6 3. Kd8 Kxd6 4. Rf6#) 3. Re8 Kc6 4. Re6#

(1052) 1. b8=N Kxa5 2. Nc6+ Kb5 3. Nd4+ Ka5 4. b4#

(1053) 1. e8=Q+ Kxe8 2. Nb6 Ke7 3. c8=R Ke6 4. Re8#

(1054) 1. Kf5 Kd4 2. Be2 Ke3 3. Bf1 Kd4 4. Nc2#

(1055) 1. Kg2 Ke2 2. Nc1+ Kd1 3. Na2 Ke2 4. Nc3#

(1056) 1. f8=R Kd6 2. Rf7 Ke5 3. Kb4 Kd6 4. Bc7#

(1057) 1. Rf3 Ke7 2. Kc7 Ke6 3. Kd8 Kxd6 4. Rf6#

(1058) 1. b8=R Ka7 2. Rxb6 Ka8 3. Kxb5 Ka7 4. Kc6 Ka8 5. Ra6#

(1059) 1. Nc4 f5 2. Ne3 f4 3. Ng4 f3 4. Kf1 f2 5. Nxf2#

(1060) 1. Bg5 g6 2. Be3 g5 3. Bg1 g4 4. Kf2 g3+ 5. Nxc3#

(1061) 1. Nc7 Kg6 2. Ne8 Kh6 3. f7 Kg6 4. f8=R Kh6 5. Rf6#

(1062) 1. Bh4 Kxh4 2. Kf5 Kh5 3. Ne6 Kh4 4. Nf4 h5 5. Ng6#

(1063) 1. Nd6 Ka5 2. Kc7 Ka4 3. Kc6 Ka5 4. Nb7+ Ka4 5. Bb5#

(1064) 1. Kd7 Kxa7 2. Kxc7 Ka8 3. Kb6 Kxb8 4. c7+ Kc8 5. Bf5#

(1065) 1. Ba5 b6 2. Nd2+ Kxa3 3. Bc3 b5 4. Kb1 b4 5. Bb2#

(1066) 1. Kb7 Kb5 2. Nb6 Ka5 3. Nxb3+ Kb5 4. Nd4+ Ka5 5. b4#

(1067) 1. Bf1 h3 2. Ne7 Kh4 3. Ng6+ Kh5 4. Kf6 Kxg4 5. Be2#

(1068) 1. Kh2 Kf4 2. Bg6 Kxg4 3. Nd3 Kh4 4. g3+ Kg4 5. Ne5#

(1069) 1. Kd7 e4 2. Bxe4 Kg4 3. Bf4 Kh5 4. Ke6 Kg4 5. Bf3#

(1070) 1. g4 Kf8 2. g5 Kg8 3. Ne7+ Kf8 4. Bh5 Kxe7 5. Bd6#

(1071) 1. Bd1 Kd3 2. Be1 Kc3 3. Bd2+ Kd3 4. Ke5 Kxc4 5. Be2#

(1072) 1. Ba7 Kxa7 2. Kxc7 Ka8 3. Kb6 Kxb8 4. c7+ Kc8 5. Be6#

(1073) 1. Kd4 Kc2 2. Ba4+ Kb1 3. Ke3 Kc1 4. Kd3+ Kb1 5. Bc2#

(1074) 1. Kc5 Ka7 (1... b4 2. Rxb4 Ka7 3. Kc6 Ka8 4. Kc7 Ka7 5. Ra4#) 2. Kxb5 Ka8 3. Kc6 Ka7 4. Kc7 Ka8 5. Ra6#

(1075) {b} a4-a3 } 1. Rb4 Kxa2 2. Ka4 Ka1 3. Kb3 Kb1 4. Rc4 Ka1 5. Rc1#

(1076) 1. Kg2 Kxh4 2. Nh3 Kg4 3. Re5 Kh4 4. Kf3 Kxh3 5. Rh5#

(1077) 1. Nb6 Kxb6 2. Kd7 Ka6 3. Kc8 Kb6 4. Kb8 Ka6 5. Rc6#

(1078) 1. Ra5 Kxb3 2. Kd3 Kb2 3. Nc1 Kb1 (3... Kxc1 4. Rb5 Kd1 5. Rb1#) 4. Kc3 Kxc1 5. Ra1#

(1079) 1. Rb1 Ka5 2. Kxa7 Ka4 3. Kb6 Ka3 4. Kc5 Ka4 5. Ra1#

(1080) 1. Nc3 Kb6 2. Kb4 Kc6 3. Nb5 Kb6 4. Be4 Ka6 5. Re6#

(1081) 1. Rf5 Kxd8 2. Re5 Kc7 3. Rd5 Kxb6 4. Rc5 Ka6 5. Rc6#

(1082) 1. Qd2 Kb1 2. Ke2 Ka1 3. Kd3 Kb1 4. Kc3 Ka1 5. Qb2#

(1083) 1. Qg2 Kh6 2. Kxh4 Kh7 3. Kh5 Kh8 4. Kg6 Kg8 5. Qa8#

(1084) 1. Na5 Kd5 2. Kd3 Kc5 3. Qd4+ Kb5 4. Kc3 Kxa5 5. Qb4#

(1085) 1. Qh8+ Kxh8 2. Kxf7+ Bg8+ 3. Rxg8+ Kh7 4. Rg6 Kh8 5. Rh6#

(1086) 1. g8=N+ Qxg8+ 2. Bxg8 Kg6 3. Bxh7+ Kxh7 (3... Kh6 4. Kf7 Kxh7 5. Rh5#) 4. Rf6 Kh8 5. Rh6#

(1087) 1. b8=Q+ Qxb8 2. Qa6+ Kxa6 3. cxb8=Q b2 4. Qxb2 Ka7 5. Ka5 Ka8 6. Kb6 Kb8 7. Qh8#

(1088) 1. f8=B Kd8 2. g5 Kd7 3. g6 Kd8 4. g7 Kd7 5. g8=Q Kd8 6. Qd5#

(1089) 1. Nc8+ Rxc8+ 2. bxc8=B Ka8 3. Bb7+ Ka7 4. b6#

(1090) 1. Kg6 Kg4 2. Nf6+ Kh4 3. Nd5 Kg4 4. Nxe3+ Kh4 5. Nd1 Kg4 6. Nf2+ Kh4 7. g3#

(1091) 1. Ke6 Kg6 2. Nf6 Kg5 3. e3 Kg6 4. f3 Kg5 5. h4+ Kg6 6. h5+ Kg5 7. f4#

(1092) 1. Kb5 Kd5 2. Kb4 Ke5 3. Kc5 Ke4 4. Kc4 Ke5 5. Kd3 Kd5 6. c4+ Ke5 7. f4#

(1093) 1. Bb4 Kd5 2. Nd8 Kd4 3. g4 Kd5 4. Ke3 Ke5 5. Be7 Kd5 6. c4+ Ke5 7. d4#

(1094) 1. Ke3 d4+ 2. Kf3 d3 3. Bxd3 Kd1 4. Nb3 Ke1 5. Na3 Kd1 6. Be2+ Ke1 7. Nc2#

(1095) 1. Bh5 Ke5 2. Nf2 Kd5 3. Be2 Ke5 4. e4 Kf6 5. Bh5 Ke5 6. Be8 Kf6 7. Ng4#

(1096) 1. Ke5 Kc4 2. Bd2 Kc5 3. Ba5 Kc4 4. Nc3 Kc5 5. Na4+ Kc4 6. Be1 Kd3 7. Nb2#

(1097) 1. Bg6 b1=Q 2. Ng5+ Ke5 3. Bxb1 Kd4 4. Nf3+ Kc4 5. Nd2+ Kd4 6. Bf5 Ke5 7. Nf3#

(1098) 1. Kc6 Ke6 2. Bg6 Ke7 3. Kc7 Ke6 4. Nf4+ Ke7 5. Nd5+ Ke6 6. e3 Kxd5 7. Bf7#

- (1099) 1. Bc1 Kc3 2. Kc5 Kd3 3. Kb5 Kc3 4. Ne4+ Kd3 5. Nc5+ Kc3 6. e4 Kxd4 7. Bb2#
- (1100) 1. Ne6 Kxf5 2. Kf7 Ke5 3. Bd7 Kd6 4. Ba4 Ke5 5. Ke7 Kf5 6. Bc2+ Ke5 7. f4#
- (1101) 1. Bg3 Kg5 2. Be5 Kh5 3. h4 Kg4 4. Ng3 Kxh4 5. Bf6+ Kg4 6. h3+ Kf4 7. Nd5#
- (1102) 1. Nf1 Kf5 2. Kd5 Kf4 3. Ke6 Ke4 4. Bf2 Kf4 5. Be3+ Ke4 6. Kd6 Kf5 7. Ng3#
- (1103) 1. Rf6 Ke5 2. Kxd3 Kd5 3. Bf8 Ke5 4. Bg7 Kd5 5. Rb6 Kc5 6. Bd4+ Kd5 7. c4#
- (1104) 1. Rab2+ Ka1 2. Kxe1 bxc2 3. Rxc2 Kb1 4. Kd2 Ka1 5. Kc3 Kb1 6. Kb3 Ka1 7. Rc1#
- (1105) 1. Qb5 Ka7 2. Kxa2 Ka8 3. Kxa3 Ka7 4. Kb4 Ka8 5. Kc5 Ka7 6. Kc6 Ka8 7. Qb7#
- (1106) 1. Kh2 h5 2. Qg5 Kh7 3. Kxh3 Kh8 4. Kxh4 Kh7 5. Kxh5 Kh8 6. Kg6 Kg8 7. Qd8#
- (1107) 1. Kb7 f3 2. Kc6 fxe2 3. Qxe2 Kg1 4. Kd5 Kh1 5. Ke4 Kg1 6. Kf3 Kh1 7. Qg2#
- (1108) 1. Bf6+ Qg7+ 2. Bxg7+ Kg8 3. Bf6 Kf8 4. Ng3 Kg8 5. Ngf5 Kf8 6. Bg7+ Kg8 7. Ne7#
- (1109) 1. Kf7+ Kh7 2. Rh8+ Kxh8 3. Ng6+ Kh7 4. Nf8+ Kh8 5. Bc3+ Be5 6. Bxe5+ Qg7+ 7. Bxg7#
- (1110) 1. Qb3+ Ka1 2. Qa3+ Qxa3+ 3. Kxa3 d5 4. Na4 d4 5. Nc5 d3 6. Nb3+ Kb1 7. Bxd3#
- (1111) 1. Nc3 a4 2. Bd5 a5 3. Bb3 axb3 4. Kxb3 a4+ 5. Kc2 a3 6. Nd5 Kxa2 7. Nb4+ Ka1 8. Kc1 a2
9. Nc2#
- (1112) 1. Nd5 Ka7 2. Nb6 Kxb6 3. Bb8 Kxa5 4. Bc7#
- (1113) 1. Ng3+ Kxg1 2. Nf3+ Kf2 3. Ne4+ Kf1 4. Be2#
- (1114) {b}d3-d2} 1. Be4 Ke5 2. Bf5 Kd4 3. c3+ Ke5 4. d4#
- (1115) 1. Kg5 g6 2. h5 gxh5 3. Kf4 h4 4. Bg4#
- (1116) 1. Kf6 Ke4 2. Qf5+ Kd4 3. Ke6 Kc4 4. Qd5#
- (1117) 1. Bh6 Kh8 2. Ke7 Kg8 3. Kf6 Kh8 4. Bg7+ Kg8 5. Ne7#
- (1118) 1. Ke3 Kd1 2. Nf2+ Ke1 3. Nd3+ Kd1 4. Ba2 Kc2 5. Bb3#
- (1119) 1. Nd6 Kh4 2. Ndf7 Kh3 3. Be2 Kh4 4. Ng6+ Kh3 5. Ng5#
- (1120) 1. Nf1 c5 2. Ba4 c4 3. Bc2 c3 4. Nb3+ Kxc2 5. Ne3#
- (1121) 1. Be6 Ke4 2. Ke2 Kd4 3. Na4 Ke4 4. f3+ Kd4 5. c3#
- (1122) 1. Kf4 Kh1 2. Kg3 f4+ 3. Kh3 f3 4. Kg3 fxg2 5. Bxg2#
- (1123) 1. Ke3 g4 2. Ne2 g3 3. Bg1+ Kh1 4. Kf3 g2 5. Bxg2#
- (1124) 1. Rh5 c5 2. d3+ Ke3 3. Rh2 c4 4. dxc4 Ke4 5. Re2#
- (1125) 1. Kf5 Ke3 2. Rf2 Kd4 3. Rf1 Ke3 4. Re1 Kd4 5. e3#
- (1126) 1. Kd2 a3 2. Rxa3 Kd4 3. Ra4+ Kc5 4. Kc3 Kb5 5. Ra5#
- (1127) 1. Kc7 Kc4 2. Kd6 Kb5 3. b3 Kxa5 4. Kc7 Kb5 5. c4+ Ka5 6. b4#
- (1128) 1. Bd3 c2 2. Bxc2 Kb5 3. Bb3 Ka5 4. Kc7 Kb5 5. Nb7 Kxa6 6. Bc4#
- (1129) 1. Bc1 d5 2. Bb2 d4 3. Bxd4 Ka3 4. Bb2+ Kb3 5. Kc5 Kxa4 6. Bc2#
- (1130) 1. Bf2 e1=Q 2. Bxe1 Kd4 3. Kf4 Kc4 4. Ke5 Kb5 5. Ba5 Kc4 6. Bd3#
- (1131) 1. Kc4 Ke5 2. Kc5 Ke4 3. Nd5 Ke5 4. Rf6 Ke4 5. Kd6 Kd4 6. Rf4#
- (1132) 1. Bb8+ Kxb8 2. Nxd7+ Ka7 3. Nb6 Kb8 4. Nf6 Ka7 5. Nc8+ Kb8 6. Nd7#
- (1133) 1. Rab2+ Ka1 2. Kxd3 bxc2 3. Kxc2 d3+ 4. Kb3 d2 5. Rxd2 Kb1 6. Rd1#
- (1134) 1. Qe3 f5 2. Kd7 f4 3. Qxf4 Kc5 4. Qd6+ Kb5 5. Kc7 Ka5 6. Qb6#
- (1135) 1. c8=N+ Kc6 2. Nxe7+ Kb6 3. Nc8+ Kc6 4. Bf4 Kd5 5. Ne7+ Kd4 6. e3#
- (1136) 1. Rh1+ Rh3 2. Rxh3+ Qh6+ 3. Rxh6+ Bxh6 4. Rh2 Kh7 (4... Kg8 5. Rxh6 Kf8 6. Rh8#) 5.
Kf7 Kh8 6. Rxh6#
- (1137) 1. Qa8+ Kxa8 2. cxb5 Kb8 3. Kd7 Ka8 4. Kc7 Ka7 5. b6+ Ka8 6. Bb7#
- (1138) 1. Qa8+ Qxa8 2. Na6+ Qxa6+ 3. Bxa6 Ka8 4. Kc7 Ka7 5. Bc8 Ka8 6. Bb7+ Ka7 7. b6#
- (1139) 1. Rh8+ Kxh8 2. Bxh5 Kg8 3. Kb2 Kh8 4. Kc3 Kg8 5. Kd4 Kh8 6. Ke5 Kg8 7. Kf6 Kh8 8.
Rf8+ Kh7 9. Bg6#
- (1140) 1. Ndf7 Ke6 2. Ke4 Kf6 3. Bf8 Ke6 4. Ng5+ Kf6 5. Nh7+ Ke6 6. d5#
- (1141) 1. Be8 Ke5 2. Kc5 Ke6 3. Kd4 Kd6 4. Nf5+ Ke6 5. Nh6 Kd6 6. Bb5 Ke6 7. Kc5 Ke5 8. Bxd3
Ke6 9. Bf5+ Ke5 10. d4#
- (1142) 1. Nc7 Ke5 2. Ne8 Ke4 3. Bd2 Ke5 4. Kd3 Kd5 5. Bxb4 Ke5 6. Bd6+ Kd5 7. Bc7 Kc5 8. Kc3
Kd5 9. Nf6+ Kc5 10. b4#
- (1143) 1. Ne6+ Ke4 2. Bd1 Kf5 3. Bh5 Kf6 4. Nf2 Kf5 5. Nxd3 Kf6 6. Nf2 Kf5 7. Ke7 Ke5 8. Bf3
Kf5 9. Be4+ Ke5 10. d4#
- (1144) 1. Rf7 Kg8 2. Kxa3 Kh8 3. Kxa4 Kg8 4. Kb5 Kh8 5. Kc6 Kg8 6. Kxd6 Kh8 7. Be4 Kg8 8.
Rh7 Kf8 9. Bd5 Ke8 10. Rh8#
- (1145) 1. g3 Kf5 2. Nh8 Kg4 3. Nf7 Kf3 (3... Kf5 4. Nh6#) 4. Ne5#

- (1146) 1. Kg5 Kg8 2. Kf6 Kh8 3. Bg7+ Kg8 4. Bf7#
- (1147) 1. Kg5 Kg8 2. Kf6 Kh8 3. Nf5 Kg8 4. Ne7+ Kh8 5. Bg7#
- (1148) 1. Ke6 Kf4 2. Nf7 Ke4 3. Ng5+ Kf4 4. Nh3+ Ke4 5. f3#
- (1149) {b}all up 1 sq. and 6#} 1. Bf1 Ke4 2. Kc5 Ke5 3. Bh3 Ke4 4. Bf5+ Ke5 5. d4#
- (1150) {b}d3-f2} 1. Kc7 Ke6 2. Nf4+ Ke7 3. Ng6+ Ke6 4. Bd4 Kd5 5. Nf4#
- (1151) 1. g8=N+ Kh5 2. Bg6+ fxg6 3. Qe5+ g5 4. Qe8+ Qf7 5. Qxf7#
- (1152) 1. Kg3 Kg1 2. Be2 Kh1 3. Kf2 Kh2 4. Bf1 Kh1 5. Bg2+ Kh2 6. Ng4#
- (1153) 1. Kg7 Kxg5 2. Ne2 Kh5 3. Nf4+ Kg5 4. Ne6+ Kh5 5. Kh7 g5 6. Ng7#
- (1154) {b}e8-b5} 1. d3 Kd6 2. Kf6 Kd5 3. Ke7 Ke5 4. Bg6 Kd5 5. Be4+ Ke5 6. f4#
- (1155) 1. Ba5 Kxa5 2. Ka7 Kb5 3. Kb7 Ka5 4. Nc2 Kb5 5. Nb4 Ka5 6. Nc6+ Kb5 7. c4#
- (1156) 1. Be2 Ke4 2. Kd6 Kd4 3. Nf4 Ke4 4. Nfh5 Kd4 5. Ne6+ Ke4 6. Ng3#
- (1157) 1. Kc7 Kd5 2. Nf6+ Ke6 3. Bg5 Ke7 4. d5 Kf8 5. Bh6+ Ke7 6. Ng8#
- (1158) 1. Nf2 Kf5 2. Be4+ Ke5 3. Bd3 Kd5 4. Kd7 Ke5 5. Ng4+ Kd5 6. c4#
- (1159) 1. Nf2 Kf5 2. Bc2+ Ke5 3. Bd3 Kd5 4. Kd7 Ke5 5. Ng4+ Kd5 6. e4#
- (1160) 1. Bg1 Kxg1 2. Nc3 Kh1 3. Bxg4 Kg1 4. Bh3 Kh1 5. Bg2+ Kg1 6. Ne2#
- (1161) 1. Bd7 Kc5 2. Ba3+ Kd5 3. Be7 Ke5 4. Ke3 Kd5 5. Nb6+ Ke5 6. f4#
- (1162) 1. Be7 Ke5 2. Ke3 Kf5 3. d3 Ke5 4. Ng4+ Kf5 5. Nh6+ Ke5 6. d4#
- (1163) 1. Nb6 Ka7 2. Kb5 Kb8 3. Kc6 Ka7 4. Bb7 Kb8 5. a6 Ka7 6. Nc8+ Kb8 7. a7#
- (1164) 1. Bd7 Ke5 2. Ke3 Kd5 3. Kd3 Ke5 4. Nh3 Kd5 5. Nf4+ Ke5 6. Ng6+ Kd5 7. c4#
- (1165) 1. Kf6 Ke4 2. Ke6 Kf4 3. Bc1+ Ke4 4. Bd2 Kd4 5. Kd6 Ke4 6. Ng3+ Kd4 7. e3#
- (1166) {2 daoaiy} 1. Kc4 (1. Nc6+ Ke6 2. Nb8 Ke5 3. Bxd3 Ke6 4. Bg6 Ke5 5. Nd7+ Ke6 6. Nf8+ Ke5 7. d4#) 1... Kd6 2. Bf5 Ke5 3. Bxd3 Kd6 4. Bf5 Ke5 5. Bg4 Ke4 6. d3+ Ke5 7. Nf7#
- (1167) 1. Nh7 Ke5 2. Kxe3 Kd5 3. Kd3 Ke5 4. e3 Kd5 5. Nf6+ Ke5 6. Ng4+ Kd5 7. e4#
- (1168) 1. Bf7 Kf5 2. Ke3 Ke5 3. Ng8 Kf5 4. Kxf3 Ke5 5. Ke3 Kf5 6. Nh6+ Ke5 7. f4#
- (1169) 1. Nec6 Kf4 2. Ne5 Ke4 3. Nc2 Kf4 4. Kd5 Kf5 5. Nxe3+ Kf4 6. Ng2+ Kf5 7. e4#
- (1170) 1. Bd1 d3 2. Bg4 Kd4 3. Kd6 Ke4 4. Kc5 Ke5 5. Nxd3+ Ke4 6. Nf2+ Ke5 7. d4#
- (1171) 1. Nce7 Kxe5 2. Kd7 Kd4 3. Kd6 Kc4 4. Be2+ Kd4 5. Nf5+ Ke4 6. Ng3+ Kd4 7. c3#
- (1172) 1. Ke7 Kd5 2. Be4+ Ke5 3. Bxf3 Kf5 4. Bh5 Ke5 5. Bg6 Kd5 6. Be4+ Ke5 7. f4#
- (1173) 1. Nb6 Kxb6 2. Nb5 Ka6 3. Kf5 Kb6 4. Ke6 Ka6 5. Kd7 Kb6 6. Kc8 Ka6 7. Rc6#
- (1174) {b} b6-g6 8#} 1. Ka7 b5 2. Kb6 b4 3. Kc5 b3 4. Kd4 b2 5. Rxb2+ Kg1 6. Ke3 Kf1 7. Rb1#
- (1175) 1. Ra6+ Kxa6 2. Kc7 Ka7 3. Bb5 Ka8 4. Ba6 Ka7 5. b5 Ka8 6. Bb7+ Ka7 7. b6#
- (1176) 1. Qh8+ Kxh8 2. Kxf7 Kh7 3. g4 Kh8 4. Bh6 Kh7 5. g5 Kh8 6. Bg7+ Kh7 7. g6#
- (1177) 1. Bf6 Kh7 2. Kf7 Kh6 3. g4 Kh7 4. Bg5 Kh8 5. Bh6 Kh7 6. g5 Kh8 7. Bg7+ Kh7 8. g6#
- (1178) 1. Nf3 Kf5 2. Ng5 Kf6 3. Bd1 Kf5 4. Bg4+ Kf6 5. Ne4+ Kf7 6. Bd7 Kg8 7. Be6+ Kh7 8. Ng5#
- (1179) 1. Nhf6 Kf4 2. Bh3 Ke3 3. Bg4 Kf4 4. Bh5 Ke3 5. Ne8 Kf4 6. Kd4 Kf5 7. Ng7+ Kf4 8. e3#
- (1180) 1. Bg5 Ke5 2. Ng3 Kd5 3. Be3 Ke5 4. Ke7 Kd5 5. Na5 Ke5 6. Nc6+ Kd5 7. Nb4+ Ke5 8. d4#
- (1181) 1. Bc5 Kf6 2. Nf3 Ke6 3. Ke8 Kf6 4. Bd4+ Ke6 5. e4 Kd6 6. Kd8 Ke6 7. Ng5+ Kd6 8. e5#
- (1182) 1. Bc8 Kc6 2. Kc4 Kd6 3. Nab4 Ke5 4. Kc5 Ke4 5. Bg4 Ke5 6. Nxd3+ Ke4 7. Nf2+ Ke5 8. d4#
- (1183) 1. Kd6 f6 2. Ke7 Ke5 3. Nxf6 Kf5 4. Nf7 Kg6 5. Ke6 Kg7 6. f4 Kg6 7. f5+ Kg7 8. Bh6#
- (1184) 1. Ba3 Kc4 2. Ke4 Kc3 3. Ne3 Kd2 4. Bb2 Ke1 5. Kd3 Kf2 6. Ne2 Ke1 7. Be5 Kf2 8. Bxg3#
- (1185) 1. Ba4 Kd5 2. Bb5 Ke5 3. Bc6 Kf5 4. Bxe4+ Ke5 5. Bd3 Kd5 6. Kd7 Ke5 7. Ng4+ Kd5 8. e4#
- (1186) 1. Kf5 Kd6 2. Kf6 Kd5 3. Nxf3 Kd6 4. Nd2 Kd5 5. Ke7 Ke5 6. Bd3 Kd5 7. Be4+ Ke5 8. f4#
- (1187) 1. Bf7 Kf5 2. Kxh4 Ke4 3. Bc4 Kf5 4. Kh5 Ke4 5. Kh6 Kf5 6. Bd5 Kxg4 7. Be6+ Kh4 8. g3#
- (1188) 1. Bh4 Kxf4 2. Kd4 Kf5 3. Ke3 Ke5 4. Be7 Kf5 5. d3 Ke5 6. Ng4+ Kf5 7. Nh6+ Ke5 8. d4#
- (1189) 1. Kb5 Kd4 2. Bc4 Ke5 3. Kc5 Kf5 4. Bf7 Ke5 5. Kc4 Kf5 6. Kd3 Ke5 7. Ke3 Kf5 8. Nh4+ Ke5 9. f4#
- (1190) 1. Bc7 Kc5 2. Ba5 Kd5 3. Kf4 Kc5 4. Ke5 Kc4 5. Ke4 Kc5 6. Kd3 Kd5 7. Bb4 Ke5 8. Bd6+ Kd5 9. e4#
- (1191) 1. Bh4 Kd5 2. Be7 Ke4 3. Bf8 Kd5 4. Kf4 Ke6 5. Ke4 Kf6 6. d4 Ke6 7. Ng5+ Kf6 8. Nh7+ Ke6 9. d5#
- (1192) 1. Be8 Ke6 2. Kd4 Kd6 3. Nf5+ Ke6 4. Nh6 Kd6 5. Bb5 Ke6 6. Kc5 Ke5 7. Bxd3 Ke6 8. Bf5+

Ke5 9. d4#

(1193) 1. Bb5 Ke6 2. Be8 Kd6 3. Nf5+ Ke6 4. Nh6 Kd6 5. Bb5 Ke6 6. Kc5 Ke5 7. Bxd3 Ke6 8. Bf5+ Ke5 9. d4#

(1194) 1. Bf8 Ke5 2. Be7 Kd5 3. Nf4+ Ke5 4. Ne2 Kd5 5. Nxc3+ Ke5 6. Ne2 Kd5 7. Nf4+ Ke5 8. Ng6+ Kd5 9. c4#

(1195) 1. Bf3 d5 2. Bxd5 h2 3. Rh7+ Kb8 4. Kxh2 Kc8 5. Kg3 Kb8 6. Kf4 Kc8 7. Ke5 Kb8 8. Kd6 Kc8 9. Rh8#

(1196) 1. Ba5+ Rc7 2. Ke6 Ke8 3. Bxc7 Kf8 4. Kf6 Ke8 5. Nb6 Kf8 6. Bd6 Ke8 7. Ned5 Kd8 8. Be7+ Ke8 9. Nc7#

(1197) 1. b8=N+ Ka7 2. Bb6+ Ka8 3. Ra5+ Qxa5 4. Bxa5 Ka7 5. b4 Ka8 6. b5 Ka7 7. b6+ Ka8 8. b7+ Ka7 9. Bb6#

(1198) 1. Rc1+ Ka2 2. Ra8+ Na4 3. Rxa4+ Kb2 4. Raa1 h5 5. Kg7 h4 6. Kf6 h3 7. Ke5 h2 8. Kd4 h1=Q 9. Rxh1 Kc2 10. Rh2#

(1199) 1. Bc6 Ke3 2. Bb5 Kf4 3. Be8 Ke3 4. Bh5 Kf4 5. Kd4 Kf5 6. Bf7 Kf4 7. e3+ Kf5 8. g4#

(1200) 1. Bb5 Kb3 2. Bc3 Ka3 3. Bxb2+ Kb3 4. Kc1 Kxa2 5. Bc4#